



Making a difference...together

Integrated Water Services
479 Island Highway
Victoria, BC, Canada V9B 1H7

T: 250.474.9600
F: 250.474.4012
www.crd.bc.ca

WATER INTERRUPTION

NOTICE TO LOCAL AREA RESIDENTS SURFSIDE WATER DISTRICT

On Tuesday, October 4, 2016 between the hours of 9am and 3pm, the Capital Regional District will be undertaking a water main repair in the Surfside area. In order to complete the work, it will be necessary to turn off the water and interrupt water service to a portion of the community. Please refer to the Water Interruption Influenced Area Map.

The areas likely to be influenced by the service interruption are:

- Wood Dale Drive, west end

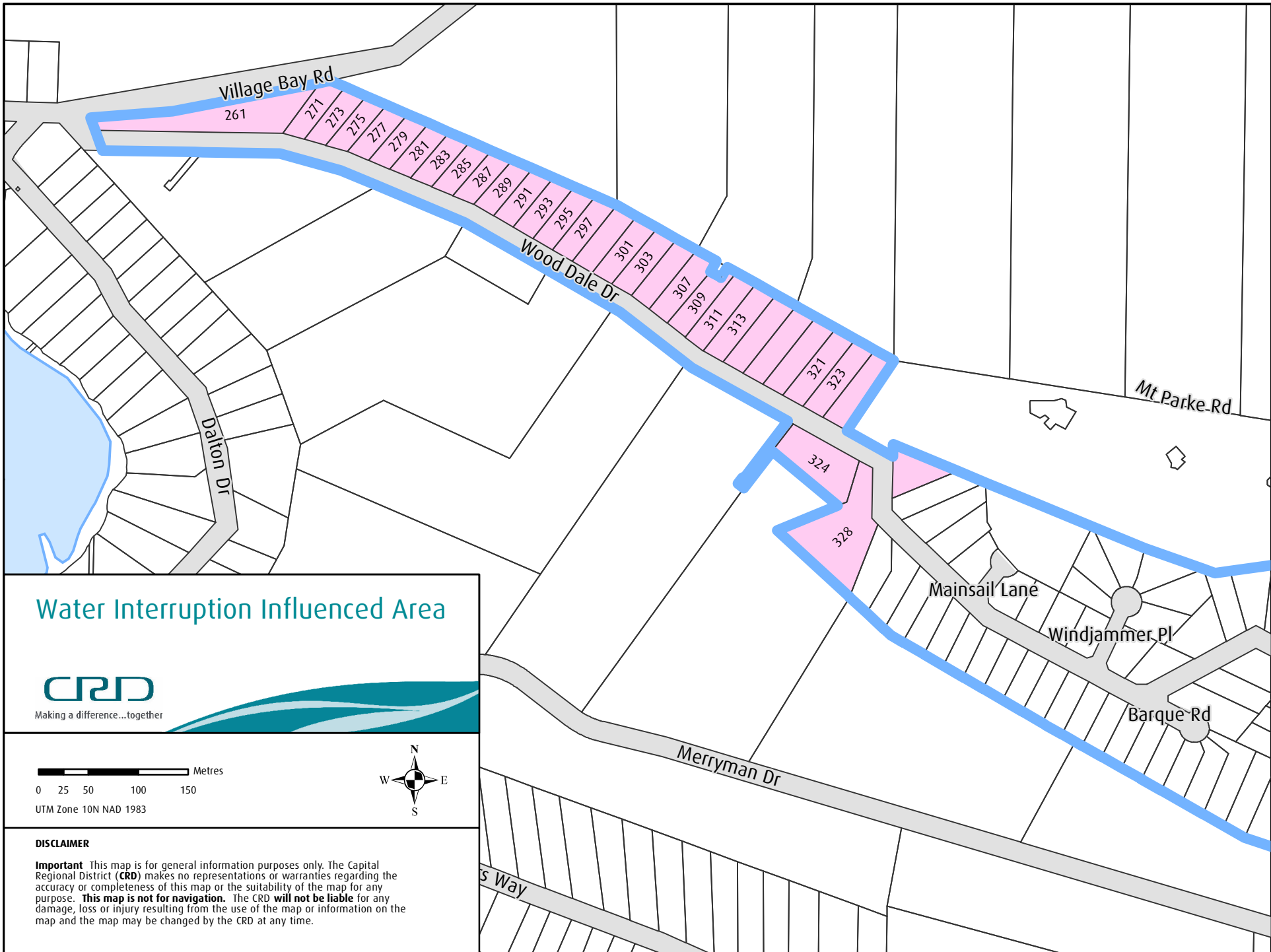
As water to your property will be shut off during this period, residents may want to set aside some water to meet their individual needs during this time.

It is also important to note that after the work is completed and water service is restored, you may experience intermittent brown water at your tap for short durations. Should this occur, continue to run your water until it clears.

Thank you for your patience and understanding.

Questions? Please call

***John Magi, Supervisor
Southern Gulf Islands Operations
Cell: 250.883.2550***



Water Interruption Influenced Area



Making a difference...together



UTM Zone 10N NAD 1983



DISCLAIMER

Important This map is for general information purposes only. The Capital Regional District (CRD) makes no representations or warranties regarding the accuracy or completeness of this map or the suitability of the map for any purpose. **This map is not for navigation.** The CRD **will not be liable** for any damage, loss or injury resulting from the use of the map or information on the map and the map may be changed by the CRD at any time.