



Making a difference...together

## Public Service Announcement

For Immediate Release

June 8, 2019

### Boil Water Advisory for Wilderness Mountain Water System (East Sooke)

**East Sooke, BC-** The Capital Regional District (CRD) in consultation with Island Health have issued a Boil Water Advisory for the Wilderness Mountain Water Service Area. The Wilderness Mountain Water System provides drinking water to 71 residential lots located near the top of Mount Matheson in East Sooke (refer to attached map).

The treated water turbidity is elevated as a result of high turbidity water originating from the surface water source, Wilfred Reservoir. Residents in the impacted area should BOIL their drinking water until further notice.

The Boil Water Advisory will be removed when Island Health is satisfied that the drinking water does not pose a health concern and issues an 'ALL CLEAR' notice, at which time the customers of the Wilderness Mountain Water Service Area will be notified as soon as possible. During the Boil Water Advisory, household tap water may be disinfected by boiling it vigorously for 1 minute.

Updates on this advisory will be provided weekly and/or if there is a change in information. For updates regarding this advisory, please visit [www.crd.bc.ca/alerts](http://www.crd.bc.ca/alerts) and follow us on Twitter [@crd\\_bc](https://twitter.com/crd_bc).

For more information on boil water advisories, please visit [www.islandhealth.ca/boilwater](http://www.islandhealth.ca/boilwater).

-30-

Attached: Boil Water Advisory Information

#### For media inquiries, please contact:

Matthew McCrank, Senior Manager, Infrastructure Operations

CRD Integrated Water Services

Office 250.474.9662 Cell 250.415.0188



# BOIL WATER ADVISORY INFORMATION

## **Is it necessary to boil all tap water in the home during a Boil Water Advisory?**

During a Boil Water Advisory, boil all tap water used for **drinking, preparing food, beverages, ice cubes, washing fruits and vegetables, or brushing teeth**. As an alternative, use bottled water for some of these purposes.

## **How should tap water be boiled properly?**

Fill a pot with tap water (or an electric kettle without an automatic shut-off) and bring it to a **rolling boil for 1 minute**. This will kill all disease-causing organisms. If children present, place the pot on the back burner to avoid scalds. Boil only as much water in the pot as you can comfortably lift without spilling. Then cool the water and pour it into a clean container or refrigerate it until you are ready to use it. Discard all ice made previously and disinfect the ice cube trays. Make ice using boiled, cooled water.

## **I have a water treatment device, do I still need to boil my drinking water?**

If the device is designed to only improve the taste and odour or chemical quality of the water, such as activated carbon filters, it is still necessary to boil the water. Devices designed to disinfect the water (such as a UV light unit) may be used as an alternative to boiling.

## **Can I take a shower or bath?**

Adults, teens and older children can wash, bathe, or shower. However, they should avoid swallowing the water. Toddlers and infants should be sponge bathed.

## **I have a dishwasher. Is it safe to use?**

If your dishwasher has a hot setting, it safely disinfects dishes. However, if your dishwasher does not have a hot setting, after finishing the cycle, soak dishes for 1 minute in a solution of 1oz (30 ml) of bleach mixed with 3 gallons of lukewarm water (13.5 litres). Let dishes air dry.

## **I wash dishes by hand. How do I disinfect them?**

You can use boiled water for washing dishes or simply rinse them with boiled water after washing them with soap and hot water.

## **Should I change the way I am doing laundry?**

No, continue doing laundry the way you usually do.

## **Is the water safe to fill wading pools for children?**

No, the water is not safe to use in wading pools. Water usually gets into the mouths of small children, providing a possibility for infection.

## **My doctor told me I am immuno-compromised. What should I do?**

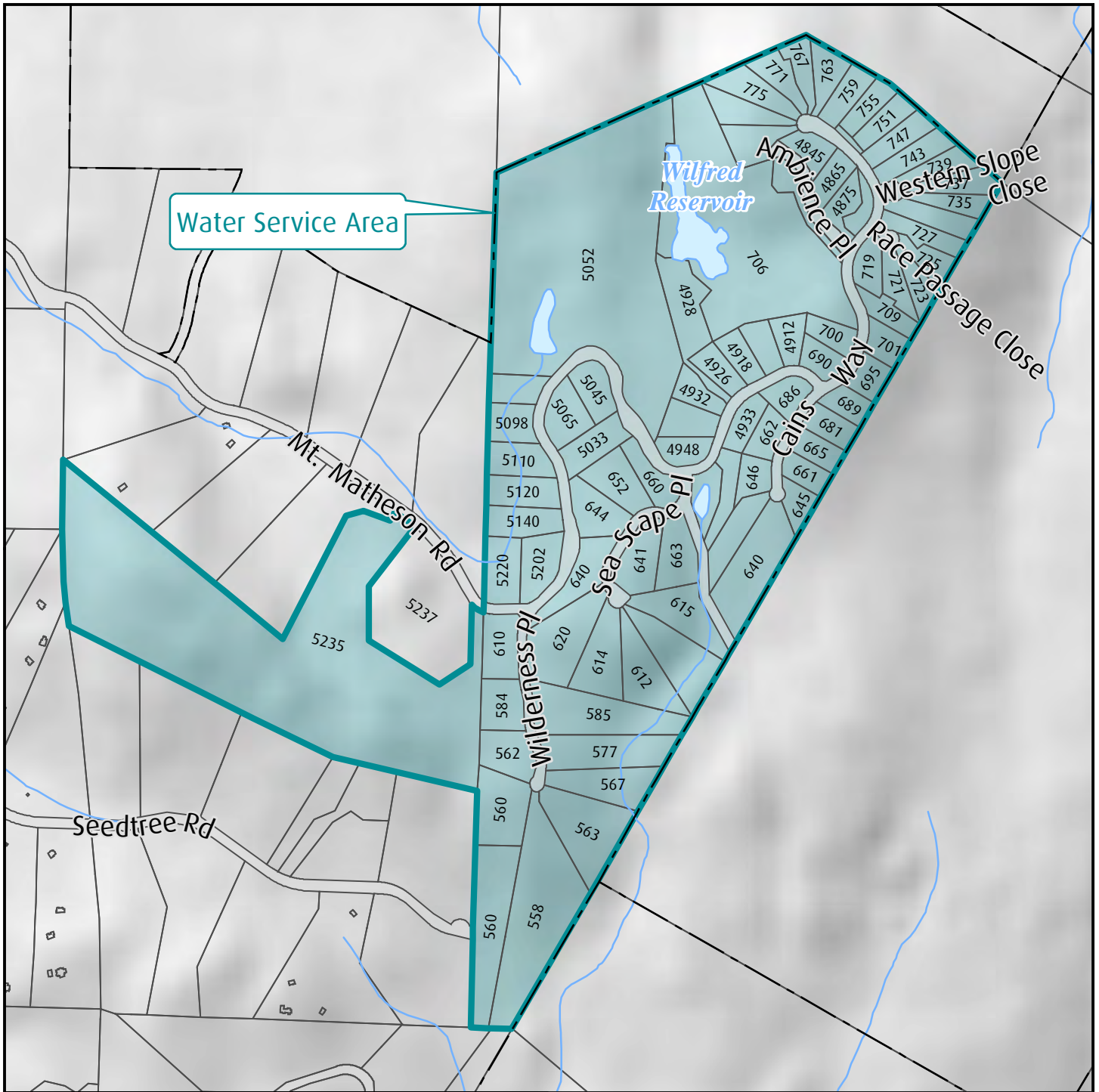
Severely immuno-compromised individuals should always boil their tap water for the purposes noted above. Infant formulas should be prepared using boiled tap water, at all times.

### **What is the process and conditions required to discontinue the boil water advisory?**

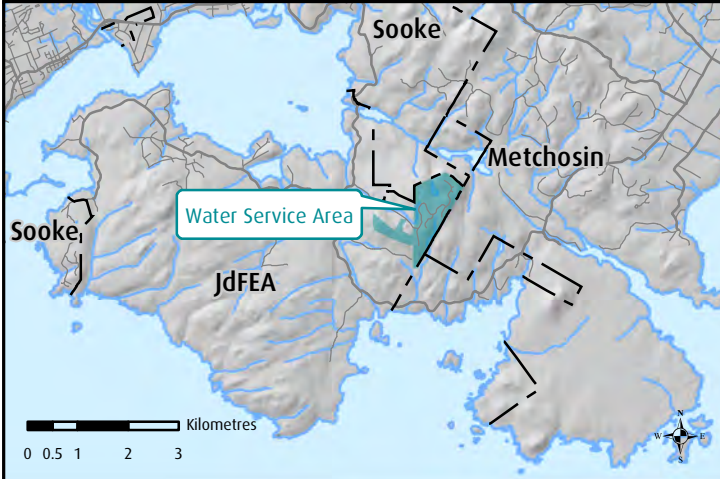
The Boil Water Advisory (BWA) can be discontinued only after the following conditions are met:

1. All corrective actions such as system repairs (if required) and system flushing have been completed and the entire service area is receiving treated and disinfected water.
2. Two consecutive sets of system wide samples collected at least 24 hours apart have satisfactory bacteriological results. The lab analysis of each bacteriological sample set takes 24 hours.
3. The Chief Medical Health Officer of the Island Health Authority is satisfied that no health hazard exists in the system.

The actual time line until the BWA discontinue notification is dependent on the duration of all corrective actions, the sample collection, sample transport, sample analysis and the possibility of a repeat of all steps in case of a failure of any of the samples.



Water Service Area



# Wilderness Mountain Water System

**CRD**  
Making a difference...together

1:11,000  
0 50 100 200 300 Metres

UTM Zone 10N NAD 1983



**DISCLAIMER**

This map is for general information only and may contain inaccuracies.

June 2018 | LS\_WildernessMountainWater\_Location.mxd | helpdesk@crd.bc.ca