



Making a difference...together

Public Service Announcement

For Immediate Release

June 15, 2018

Taste and Odour in the Wilderness Mountain Water System (Juan de Fuca Electoral Area) – Water Remains Safe to Drink

Victoria, BC - CRD Integrated Water Services advises the customers of the Wilderness Mountain Water System in the Juan de Fuca Electoral Area (refer to map attached) that an algae bloom in the raw water source, the Wilfred Reservoir, is causing a fishy or metallic-like taste and odour in the treated drinking water. This problem is affecting the entire drinking water system. The algae responsible for this event belongs to the genus of *Uroglena spp.* and is known to have this unpleasant but harmless impact on drinking water quality. The duration of this taste and odour event is difficult to estimate but it could last several days or even longer.

Please be advised that while the taste and odour on the water may be disagreeable, the water remains safe to drink and it is not a health concern. During this period, residents are **not** being advised to boil their water as a result of this occurrence.

CRD staff are continuing to monitor the quality of the water closely.

For updates, please visit www.crd.bc.ca and follow us on Twitter [@crd_bc](https://twitter.com/crd_bc)

The CRD delivers regional, sub-regional and local services to 13 municipalities and three electoral areas on southern Vancouver Island and the Gulf Islands. Governed by a 24-member Board of Directors, the CRD works collaboratively with First Nations and all levels of government to enable sustainable growth, foster community well-being, and develop cost-effective infrastructure while continuing to provide core services to residents throughout the region. Visit us online at www.crd.bc.ca.

-30-

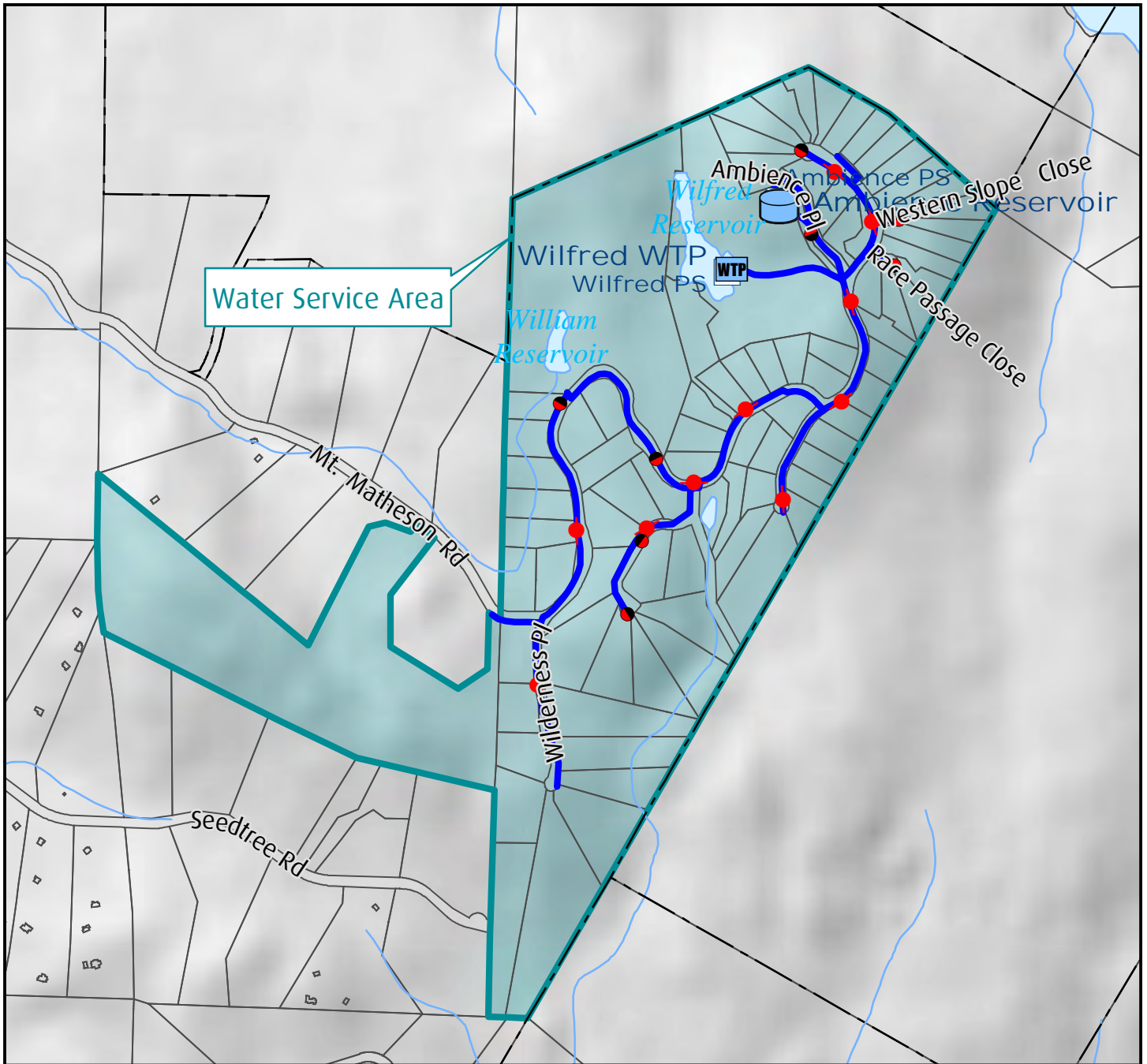
For media inquiries, please contact:

Matthew McCrank, Senior Manager

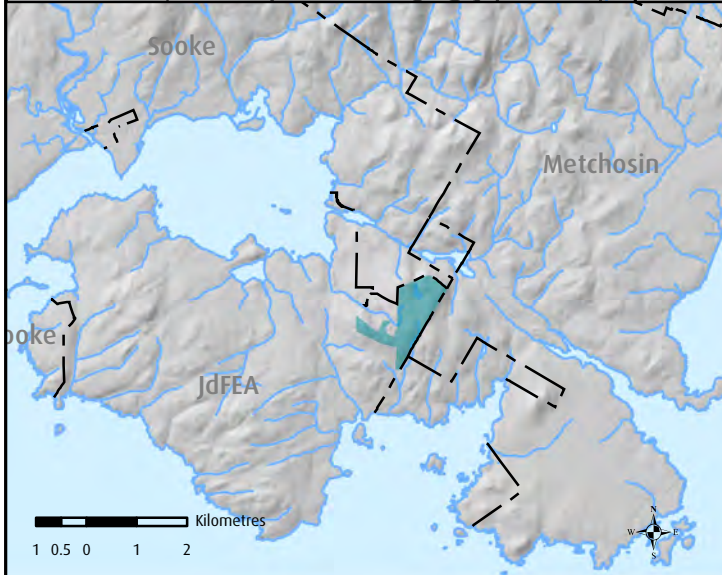
Infrastructure Operations

CRD Integrated Water Services

Office 250.474.9662



Water Service Area



Wilderness Mountain Water System



1:12,000
 0 25 50 100 150 Metres

UTM Zone 10N NAD 1983



DISCLAIMER

Important This map is for general information purposes only. The Capital Regional District (CRD) makes no representations or warranties regarding the accuracy or completeness of this map or the suitability of the map for any purpose. **This map is not for navigation.** The CRD **will not be liable** for any damage, loss or injury resulting from the use of the map or information on the map and the map may be changed by the CRD at any time.