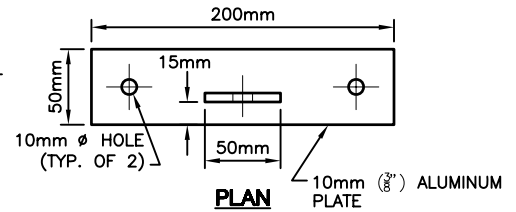
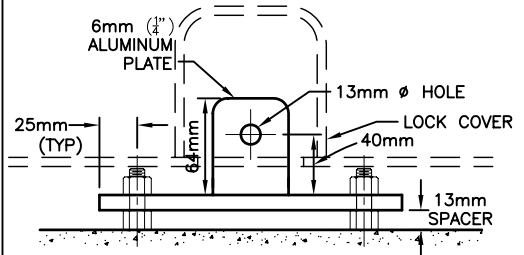


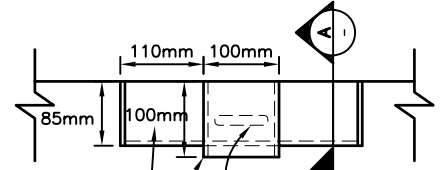
SECURITY HATCH -PLAN



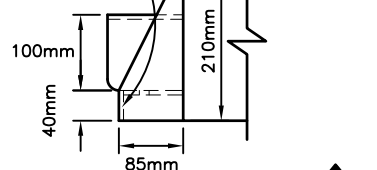
LOCK HASP DETAIL 1 - PLAN



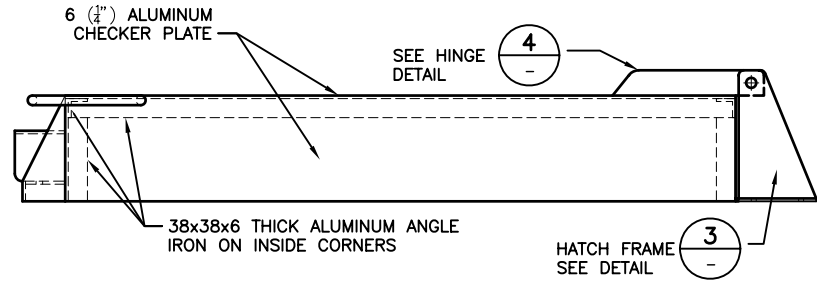
LOCK HASP DETAIL 1 - SECTION



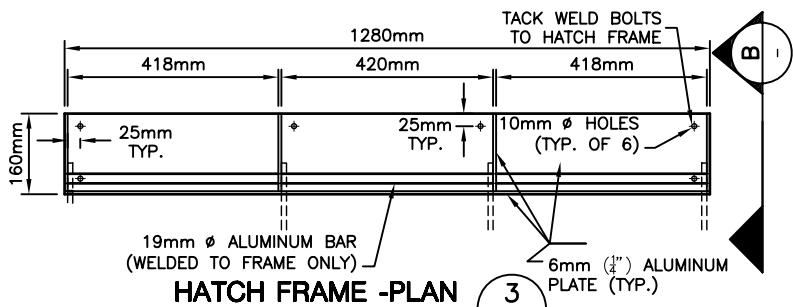
LOCK COVER DETAIL 2 - PLAN



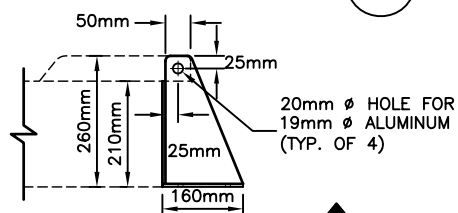
LOCK COVER DETAIL 2 - SECTION



SECURITY HATCH -ELEVATION



HATCH FRAME -PLAN



SECTION- HATCH FRAME

NOTES:

1. STANDARD SECURITY HATCH PLACED OVER STANDARD ACCESS HATCH. AS PER STANDARD DRAWING 3.5.



STANDARD SECURITY HATCH

revision date: APRIL 2007	scale: N.T.S.
drawn: A.S.	checked: C. GOTTFRED

standard drawing no.:
3.6