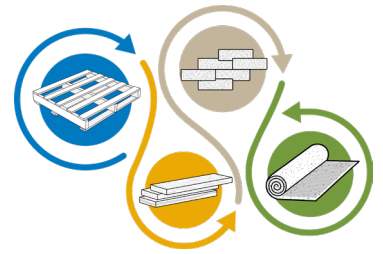


# Hartland Landfill

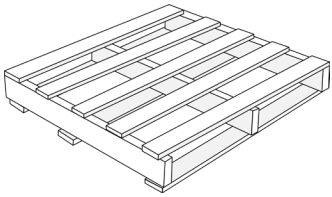
## 2024 Policy Changes and Bylaw Updates

Together we're working to extend the life of the landfill to 2100 and beyond.

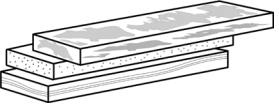
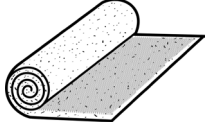
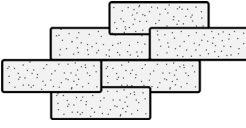


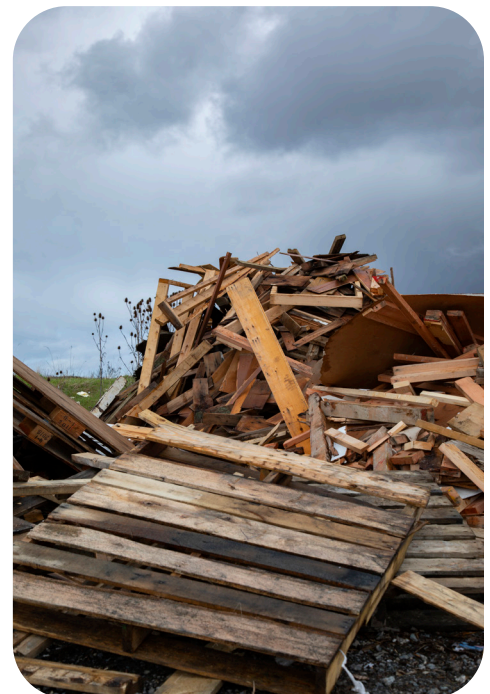
New material bans, adjustments to the tipping fee structure and increased bylaw fines at Hartland Landfill could divert up to **40,500 tonnes of waste a year**, contributing to reducing the region's waste by more than one-third. The amended bylaws were approved by the CRD Board on December 13, 2023. The changes will be implemented in two phases in 2024.

### Phase 1 - January 1, 2024

Active Face Material Bans (Banned from General Refuse)	Tipping Fee Changes	Fines and Bylaw Enforcement
 <p>Clean Wood</p>	<ul style="list-style-type: none"><li>• General refuse will increase from \$110/tonne to \$150/tonne</li><li>• Segregated clean wood will be accepted at \$80/tonne</li><li>• Hartland account customers can apply for the Waste Stream Collector Incentive Program to receive a \$25/tonne rebate on general refuse</li><li>• International high-risk cruise ship waste will increase to \$500/tonne</li></ul>	<ul style="list-style-type: none"><li>• Bylaw staff will focus on education and issue warning tickets before issuing fines</li><li>• Fine rates will increase (up to a max of \$500)</li><li>• Introduction of a 25% discount on some fines paid within 30 days</li></ul>

### Phase 2 - July 1, 2024

Active Face Material Bans (Banned from General Refuse)	Tipping Fee Changes
 <p>Treated Wood</p>  <p>Carpet and Underlay</p>  <p>Asphalt Shingles</p>	<ul style="list-style-type: none"><li>• The following materials will be accepted at \$110/tonne:<ul style="list-style-type: none"><li>- Treated wood</li><li>- Carpet and underlay</li><li>- Asphalt shingles</li></ul></li><li>• Salvageable wood will be accepted for free</li><li>• A new tipping fee of \$300/tonne will be introduced for unsorted renovation and demolition materials</li></ul> <p><b>Fines and Bylaw Enforcement</b></p> <ul style="list-style-type: none"><li>• Increased enforcement of bylaws</li></ul>



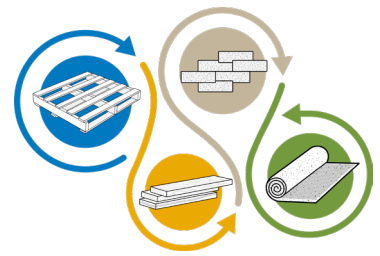
To learn more about these changes, and what you can do to reduce the amount of waste sent to the landfill, visit [www.crd.bc.ca/rethinkwaste](http://www.crd.bc.ca/rethinkwaste). For more about Hartland Landfill, visit [www.crd.bc.ca/hartland](http://www.crd.bc.ca/hartland).

Questions? Please contact [infoline@crd.bc.ca](mailto:infoline@crd.bc.ca) or 250.360.3030

# Hartland Landfill

## 2024 Policy Changes and Bylaw Updates

*Together we're working to extend the life of the landfill to 2100 and beyond.*



### Frequently Asked Questions:

#### What kind of consultation was done with residents, businesses, municipalities and the waste industry?

Extensive consultation was undertaken in the development of the 2021 Solid Waste Management Plan (SWMP). The SWMP identifies specific strategies and actions associated with reviewing the Hartland tipping fee structure and ban enforcement levels, subject to recycling market conditions. Following CRD Board approval in May 2021, the SWMP was approved by the Province of BC in July 2023.

#### Why is Hartland Landfill's general refuse tipping fee increasing?

The last time the general refuse tipping fee increased was in 2015. Increasing the general refuse tipping fee from \$110/tonne to \$150/tonne will support diversion efforts by the waste management industry, as well as better align with general refuse tipping fees in other regional districts on Vancouver Island (January 1, 2024 rates: Cowichan Valley Regional District - \$192/tonne; Comox Valley Regional District - \$155/tonne and Regional District of Nanaimo - \$140/tonne).

#### A waste collector picks up my garbage, how will an increase to Hartland Landfill's general refuse tipping fee impact the cost of that service?

The general refuse tipping fee at Hartland Landfill is increasing from \$110/tonne to \$150/tonne. It will be up to your private or municipal waste hauler to set their own prices, and often varies from service provider to service provider.

#### What can people expect to pay to get rid of general refuse if they were to bring it directly to Hartland's Public Drop-off Depot?

In 2024, it will cost \$31 to dispose of an old couch weighing about 300 lbs (\$150/tonne or approximately 7¢/pound, totaling \$21 plus the \$10 bin fee). Under the current 2023 tipping fee structure, that couch would cost about \$25 (\$110/tonne or approximately 5¢/pound, totaling \$15 plus the \$10 bin fee).

#### What is the difference between clean wood, treated wood and salvageable wood?

- Clean wood consists of wood products that are untreated, unstained and unpainted such as pallets/skids, crating and lumber offcuts.
- Treated wood consists of wood products that are pressure treated, stained or painted such as wooden furniture, plywood, particle board and laminated wood.
- Salvageable wood is defined as clean dimensional lumber greater than 4-feet in length and is unpainted.

#### Why were wood (clean, treated and salvageable), asphalt shingles and carpet selected to be banned from general refuse at Hartland Landfill?

The CRD, in collaboration with a technical advisor, completed a market scan to understand which materials that are currently being received as general refuse at Hartland Landfill could be diverted for a next and best use. The scan identified that wood (clean, treated and salvageable), carpet, and asphalt shingles have stable reuse, recycling, and recovery markets and no longer need to be disposed of as garbage. With these material bans, each year, the CRD is expecting to divert 27,500 tonnes of wood, 9,000 tonnes of asphalt shingles and 4,000 tonnes of carpet and underlay.



To learn more about these changes, and what you can do to reduce the amount of waste sent to the landfill, visit [www.crd.bc.ca/rethinkwaste](http://www.crd.bc.ca/rethinkwaste). For more about Hartland Landfill, visit [www.crd.bc.ca/hartland](http://www.crd.bc.ca/hartland).

Questions? Please contact [infoline@crd.bc.ca](mailto:infoline@crd.bc.ca) or 250.360.3030