



Artist rendering

Mayne Island Regional Trail Demonstration Project

What?

This Project is the initial trail to be developed as part of the Gulf Islands Regional Trails Plan initiative.

Why?

The purpose of the “Demonstration Trail” is to gain insight into challenges and opportunities when building regional trails on the Gulf Islands.

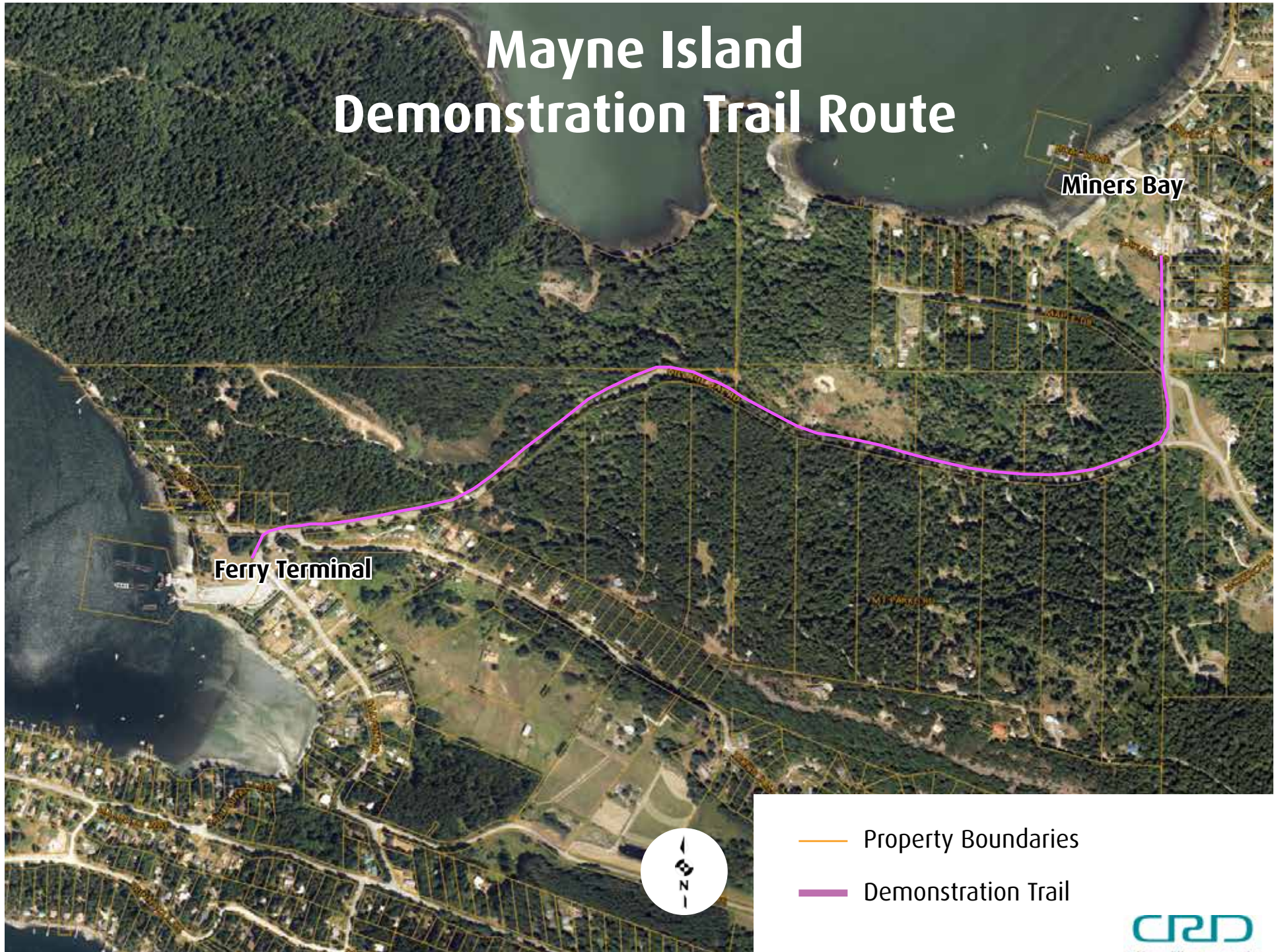
Where?

The demonstration trail route is along a portion of Village Bay Road from the Village Bay ferry terminal to Miners Bay Village.



Making a difference...together

Mayne Island Demonstration Trail Route



Ferry Terminal

Miners Bay

- Property Boundaries
- Demonstration Trail



Artist rendering

Trail Highlights

| | |
|------------------------|---|
| Trail Use: | Walking and biking separated from traffic |
| Total length: | 2.3 km – Village Bay Ferry Terminal to Naylor Road |
| Elevations: | Village Bay: 21.0 m |
| | Summit: 61.8 m |
| | Naylor Road: 17.8 m |
| Typical Grades: | Between 2% - 10% |
| Maximum Grade: | 14% |
| Width: | 2.5 m (2.0 m travelled surface and 0.25 m shoulders) |
| Surfacing: | Gravel |



Artist rendering

Challenges

1. Topography

- Bank retention of cut and fill slopes will be required.
- Appropriate fill material must be estimated and sourced.
 - Supply sources are unknown at this time.
- Drainage management - critical to locating a trail within the road allowance.

2. Constraints - Road Allowance

- Road allowance is not wide enough to accommodate a separated trail in three areas.

3. Trees

- Efforts are being made to avoid veteran trees however some smaller trees will have to be removed for the trail.

Work to Date & Next Steps

2015 Base Plan Development

- Field survey of road allowance, driveways, power and telephone poles, drainage ditches, obstacles and topographic features.



2016 Preliminary Design

- Route Layout – best fit to landscape staying in road allowance.
- Assessment of cut and fill requirements.
- Discussions with Ministry of Transportation and Infrastructure for use of road allowance.
- Discussions with adjacent land owners for use of private land at pinch points.



2017 Detailed Design - To date

- Detailed topographic survey completed.
- Identification of significant trees along trail route.
- Information meeting to update public on project.
- Comments from stakeholders and the public will be considered in the final design for this project.



2017-18 Finalize Design

- Details of final design are incorporated into a shovel ready project.
- MOTI approval of final design.



2018 Cost Estimate

- Seek partnership funding opportunities.

Comments or Questions?

Do you have any comments about the route?

Are there any other challenges you think we should consider?

Do you have suggestions to address the challenges?

Do you have any other comments or questions?

Email Brad Drew - bdrew@crd.bc.ca

**Comments will be received until 4:30 pm,
Tuesday, October 10, 2017.**