

## MOUNT WORK REGIONAL PARK – MANAGEMENT PLAN

### PROJECT SCOPE

June 2020

---

#### **PROJECT SCOPE**

A multi-disciplinary internal project team will assist in the development of the management plan. This will ensure adequate consideration of planning/engagement, conservation, recreation/visitor services, and operations aspects. The planning process will include opportunities for broad engagement before a management plan is drafted and again once a draft management plan is available. All comments received will be considered as the management plan is developed and public participation reports will be provided for information following each round of engagement.

Five First Nations will be invited to participate in the planning process (Tsartlip, Tsawout, Tseycum, Pauquachin, and Malahat Nations). Key federal, provincial and local governments will be invited to participate directly, based on location of the park and properties owned and/or managed by the various jurisdictions.

Opportunities will be provided for input from key stakeholders, such as park users, interest groups, neighbours, former landowners and the public. In addition, liaison will occur with the CRD Regional Parks Mountain Biking Advisory Committee and consideration will be given to incorporating any approved recommendations from the advisory committee into the plan.

In the immediate term (2020), given the COVID-19 situation, the majority of the awareness and engagement will be done through signage, phone calls, email, and various online opportunities. Where and when feasible and appropriate, in-person engagement will be used. If multiple small group in-person opportunities are used, rather than fewer, larger group opportunities, the timeframe for public engagement may be extended to accommodate such action.

A current initiatives project webpage will be established on the CRD website for this project to provide information about the management plan project and to provide an opportunity for the public to offer information and input. Other digital tools may also be used based on project needs.

The project aims for the following general timeline breakdown:

Board initiates project	June 2020
Initial public engagement process	fall 2020
Initial public engagement report	early 2021
Draft plan developed	winter 2020 - spring 2021
Public engagement on draft plan	summer - fall 2021
Finalize plan for Board approval	winter 2021 - spring 2022

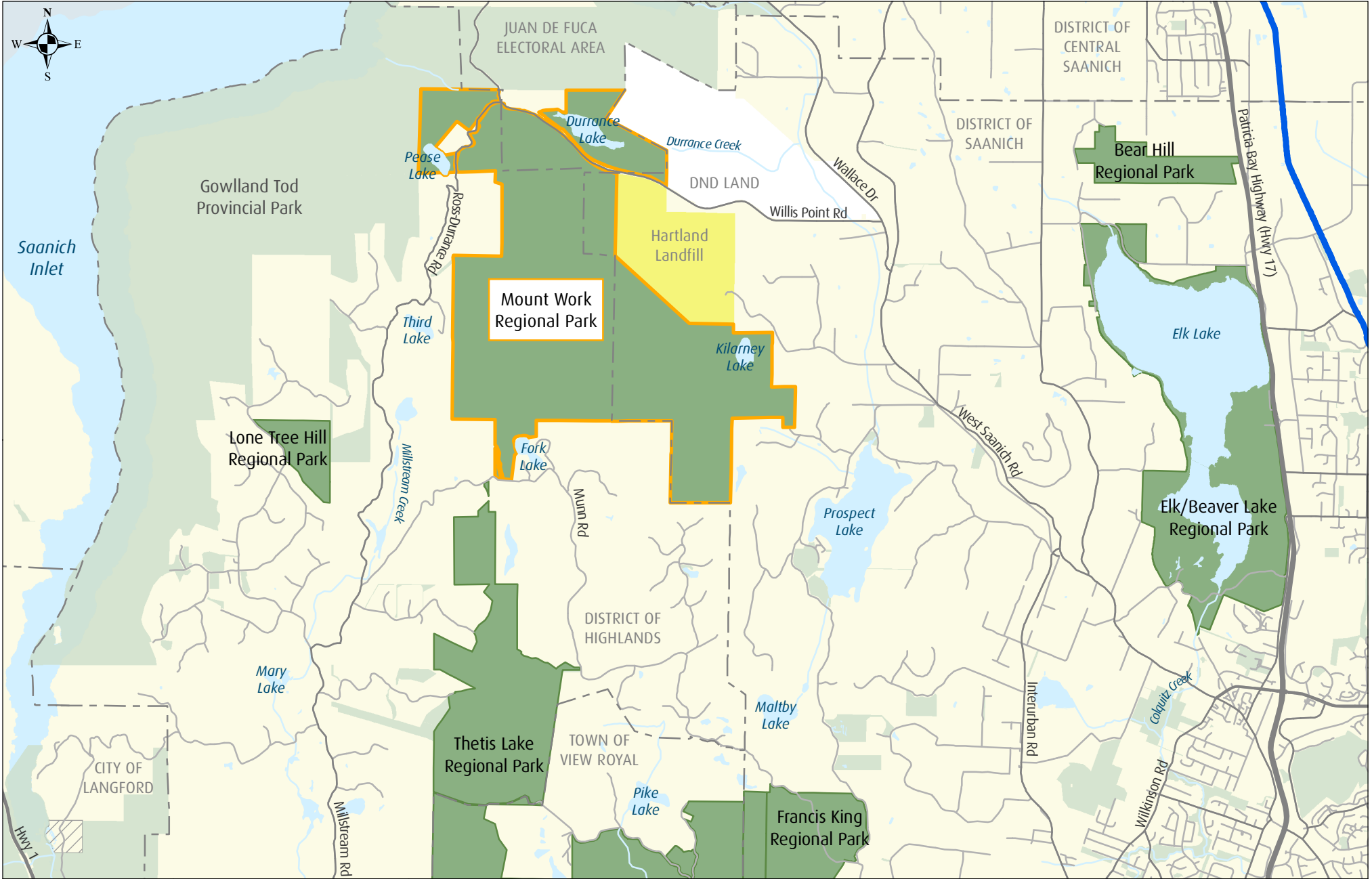
#### **PLANNING PROCESS – GENERAL TASKS**

1. Gather background information and conduct site visits.
2. Develop public awareness information (e.g., webpage, on-site signs, input surveys).
3. Liaise with First Nations.

4. Liaise with key stakeholders and governments and provide opportunities for initial public input via the email, website, and/or other digital means.
5. Assess initial input received.
6. Develop draft plan.
7. Prepare for and hold public engagement on draft plan.
8. Analyze comments received.
9. Finalize management plan.
10. Provide recommended plan for Regional Park Committee endorsement and CRD Board approval.

### **PLAN OUTLINE**

At a minimum, the management plan will include strategic direction (park vision, goals, and management statements relating to environmental conservation, cultural heritage protection, and visitor opportunities), park zoning consistent with the park's classification, a development concept, key management actions, and a general implementation strategy.



**CRD**  
Making a difference...together

0 0.5 1 1.5 Kilometres  
Projection: UTM ZONE 10N NAD 83

Mount Work Regional Park	First Nation Reserve	Lake / Ocean
Other Regional Park	Department of National Defence	Highway
Other Park	Lochside Regional Trail	Major Road
Hartland Landfill	Municipal / Electoral Area Boundary	Minor Road

**Appendix A**  
**Location Map**  
Capital Regional District Board  
Staff Report  
June 10, 2020

**Important** This map is for general information purposes only. The Capital Regional District (CRD) makes no representations or warranties regarding the accuracy or completeness of this map or the suitability of the map for any purpose. **This map is not for navigation.** The CRD **will not be liable** for any damage, loss or injury resulting from the use of the map or information on the map and the map may be changed by the CRD at any time.



Making a difference...together

## REPORT TO CAPITAL REGIONAL DISTRICT BOARD MEETING OF WEDNESDAY, JUNE 10, 2020

---

**SUBJECT**     **Mount Work Regional Park Management Planning**

### **ISSUE SUMMARY**

Initiation of management planning for Mount Work Regional Park.

### **BACKGROUND**

Mount Work Regional Park (Mount Work) is located in the District of Highlands, District of Saanich, and the Juan de Fuca Electoral Area at the base of the Saanich Peninsula, between Gowlland Tod Provincial Park, Hartland Landfill, and Thetis Lake Regional Park (Appendix A). Mount Work is 729 hectares in size, and is officially classified as a Regional Natural Area in the 2012-2021 Regional Parks Strategic Plan. It is primarily a forested park with three freshwater lakes, notably Durrance Lake, which provides accessible water-based recreation. The park was established in 1970 and although no management plan has been developed to date, various infrastructure and recreational amenities have been developed in the park over the years, notably several parking lots, information kiosks, and a developed hiking and mountain biking trail system.

Through management planning, the goals, objectives and policies of the park are set to guide ongoing development and management actions. A management plan is needed to provide direction for and safeguard critical environmental, cultural heritage and recreational values and opportunities in Mount Work, address known and anticipated issues, and help guide decision-making over the next 15-20 years. Management planning processes are also designed to engage First Nations and include public outreach and consultation. A management planning process is to be undertaken for Mount Work over the next two years, as per the project scope outlined in Appendix B and the engagement process provided in Appendix C.

### **IMPLICATIONS**

#### *Intergovernmental Implications*

Mount Work is within the traditional territory of the Tsartlip, Tsawout, Tseycum, Pauquachin and Malahat First Nations and they will be invited to participate in the management planning process. Local, regional, provincial and federal agencies will be invited to participate in the planning process, as well, where they have legal, jurisdictional, or other interests relevant to the management planning process. This includes the Canadian Department of National Defence and BC Provincial Parks, since they have properties that adjoin Mount Work. In addition, Capital Regional District (CRD) staff responsible for the Hartland Landfill site and its long-term planning will be invited to participate in the planning process, as the site is located adjacent to the regional park and some of the designated mountain biking area trails are located on Hartland lands.

#### *Environmental & Climate Implications*

Mount Work has significant ecological and recreational values. The park protects portions of three watersheds, includes six sensitive ecosystems, three provincially red-listed ecological

communities and provides habitat for six threatened or endangered species. It is within the critical habitat for three species. The management planning process will consider how best to manage and protect environmental values, while providing compatible recreational opportunities.

#### *Social Implications*

The management plan will provide strategic guidance for the development and management of visitor facilities and services at Mount Work Regional Park. There are positive public implications for residents and visitors when the park is managed in an ecologically sound way and compatible recreational opportunities are provided. The planning process provides opportunities for public engagement.

#### *Alignment with Board & Corporate Priorities*

The 2019-2022 Corporate Plan notes community needs relating to environmental stewardship, protecting natural resources and reconciling First Nations interests with respect to Park Management Plans. The management planning process includes opportunities to work together with First Nations and will outline goals and actions for environmental stewardship and protection of environmental values in the park.

#### *Alignment with Existing Plans & Strategies*

The 2012-2021 Regional Parks Strategic Plan indicates a priority to strengthen the management of existing parks and trails, and strengthen community involvement and partnerships. The strategic plan includes an action to complete or update park and trail management plans for priority parks and trails. The management planning process as presented is consistent with this direction and will include opportunities for stakeholder and public involvement. In addition, liaison will occur with the CRD Regional Parks Mountain Biking Advisory Committee as this group has been tasked with development of mountain biking guidelines.

#### *Service Delivery Implications*

Development and implementation of park management plans are a key aspect of the regional parks service.

#### *Financial Implications*

Costs associated with this project will be funded through core budget.

### **CONCLUSION**

At its May 27, 2020 meeting, the CRD Board approved a list of priority parks for management planning, and Mount Work was identified as a priority for Regional Parks to initiate this year. Accordingly, Regional Parks will begin a two-year management planning process for Mount Work Regional Park with opportunities for First Nations, local, regional, provincial and federal agency involvement, as well as stakeholder and public consultation, as per the attached project scope and engagement process. The completed plan will provide strategic direction for the effective management of Mount Work over the next 15 to 20 years by addressing environmental protection, recreational opportunities, cultural heritage management and park development.

**RECOMMENDATION**

That the Capital Regional District Board receive this report for information.

Submitted by:	Jeff Leahy, RPF, Senior Manager, Regional Parks
Concurrence:	Larisa Hutcheson, P.Eng., General Manager, Parks & Environmental Services
Concurrence:	Robert Lapham, MCIP, RPP, Chief Administrative Officer

**ATTACHMENTS**

- Appendix A: Location Map
- Appendix B: Project Scope
- Appendix C: Engagement Process

**MOUNT WORK REGIONAL PARK - MANAGEMENT PLAN  
PROPOSED GENERAL FLOW OF ENGAGEMENT PROCESS  
June 2020**

<b>Announce Project</b>	
<ul style="list-style-type: none"> <li>Announce the project publicly through social media and media release following CRD Board approval to initiate</li> </ul>	2 <sup>nd</sup> Quarter 2020
<b>Prepare for Engagement</b>	
<ul style="list-style-type: none"> <li>Create/post project webpage</li> <li>Create/post public awareness information (e.g., in-park signs)</li> <li>Develop any necessary digital tools (e.g., webinar, online displays)</li> <li>Create initial input survey</li> <li>Reach out to First Nations to determine how they wish to engage in the process</li> </ul>	3 <sup>rd</sup> Quarter 2020
<b>Initial Engagement</b>	
<ul style="list-style-type: none"> <li>Engage with First Nations</li> </ul>	3 <sup>rd</sup> & 4 <sup>th</sup> Quarter 2020
<ul style="list-style-type: none"> <li>Notify/engage with local, regional, provincial and federal agencies and key stakeholders</li> </ul>	3 <sup>rd</sup> Quarter 2020
<ul style="list-style-type: none"> <li>Post online information and input survey for initial public engagement</li> </ul>	4 <sup>th</sup> Quarter 2020
<ul style="list-style-type: none"> <li>Analyze comments received</li> </ul>	4 <sup>th</sup> Quarter 2020
<ul style="list-style-type: none"> <li>Report on initial public engagement</li> </ul>	1 <sup>st</sup> Quarter 2021
<b>Draft the Management Plan</b>	
<ul style="list-style-type: none"> <li>Draft Management Plan</li> </ul>	4 <sup>th</sup> Quarter 2020 to 2 <sup>nd</sup> Quarter 2021
<b>Prepare for Engagement on Draft Management Plan</b>	
<ul style="list-style-type: none"> <li>Develop necessary digital tools for engagement (e.g., webinars, online displays)</li> </ul>	3 <sup>rd</sup> Quarter 2021
<ul style="list-style-type: none"> <li>Create input survey for draft plan</li> </ul>	3 <sup>rd</sup> Quarter 2021
<ul style="list-style-type: none"> <li>Update public information (e.g., webpage, in-park signs)</li> </ul>	3 <sup>rd</sup> Quarter 2021
<ul style="list-style-type: none"> <li>CRD Board approval to release the Draft Management Plans for public review</li> </ul>	3 <sup>rd</sup> Quarter 2021
<ul style="list-style-type: none"> <li>Distribute media release re: draft plan release/comment period</li> </ul>	3 <sup>rd</sup> Quarter 2021

<b>Engagement on Draft Management Plan</b>	
<ul style="list-style-type: none"> <li>Refer draft plan to First Nations and seek engagement opportunities</li> </ul>	3 <sup>rd</sup> & 4 <sup>th</sup> Quarter 2021
<ul style="list-style-type: none"> <li>Refer draft plan to key government agencies and stakeholders and seek or identify engagement opportunities</li> </ul>	3 <sup>rd</sup> & 4 <sup>th</sup> Quarter 2021
<ul style="list-style-type: none"> <li>Host public engagement (digitally and/or in person)</li> </ul>	3 <sup>rd</sup> & 4 <sup>th</sup> Quarter 2021
<ul style="list-style-type: none"> <li>Analyze input received</li> </ul>	4 <sup>th</sup> Quarter 2021
<ul style="list-style-type: none"> <li>Report on public engagement</li> </ul>	1 <sup>st</sup> Quarter 2022
<b>Finalize Management Plan</b>	
<ul style="list-style-type: none"> <li>Finalize recommended management plan</li> </ul>	1 <sup>st</sup> Quarter 2022
<b>Endorsement &amp; Approval of Management Plan</b>	
<ul style="list-style-type: none"> <li>Update project webpage to include notice of Regional Parks Committee meeting date and potential CRD Board meeting date</li> </ul>	2 <sup>nd</sup> Quarter 2022
<ul style="list-style-type: none"> <li>Regional Parks Committee meeting</li> </ul>	2 <sup>nd</sup> Quarter 2022
<ul style="list-style-type: none"> <li>CRD Board meeting</li> </ul>	2 <sup>nd</sup> Quarter 2022