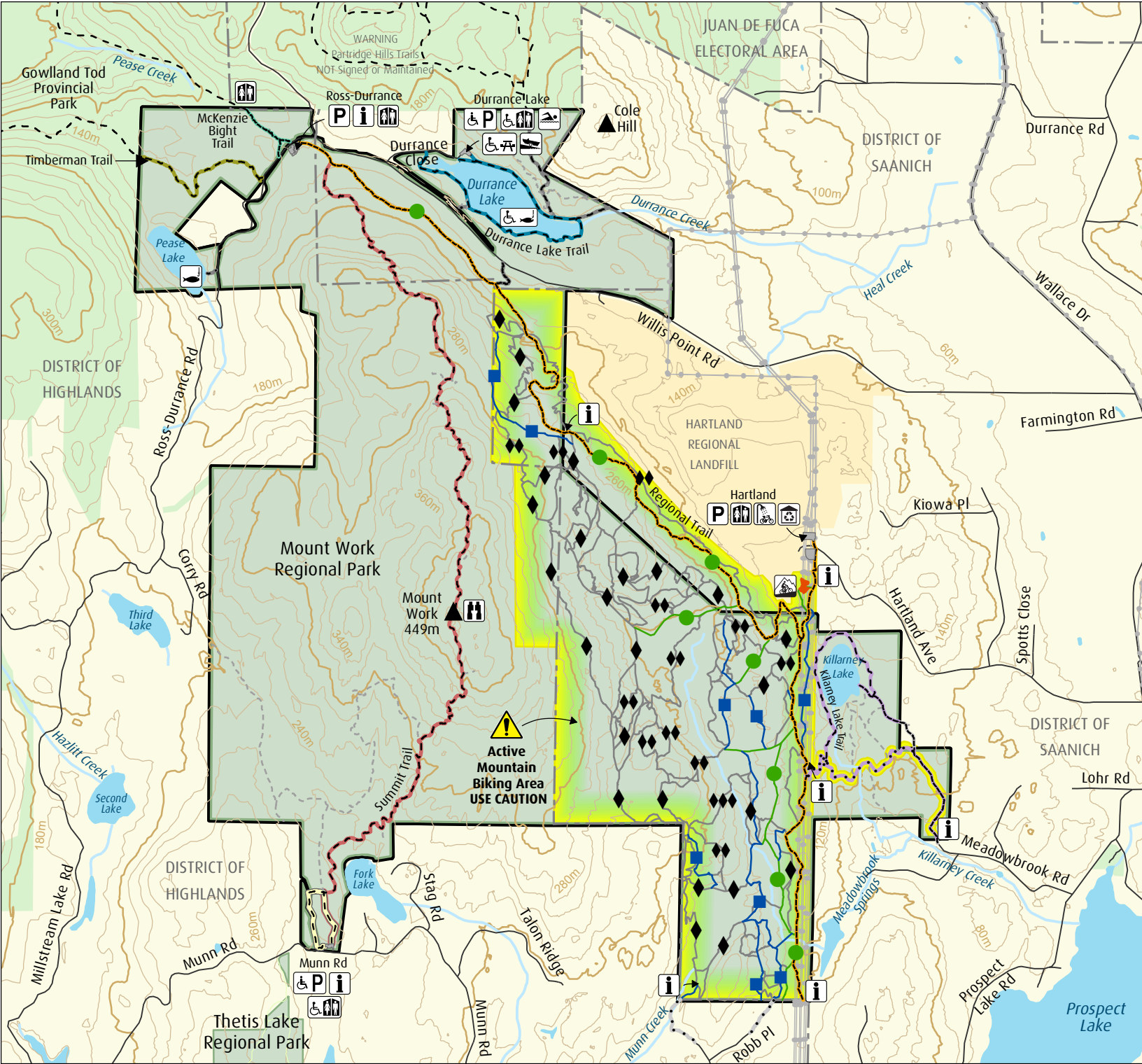


Capital Regional District Mount Work Regional Park



Trails By Name (With Distance)

- Durrance Lake Trail (1.8km)
- Killarney Lake Trail (3km)
- McKenzie Bight Trail
- Regional Trail (6km)
- Summit Trail (5km)
- Timberman Trail
- No Official Name
- Local Connector

Mountain Bike Trail Difficulty Rating

- Easy
- More Difficult
- ◆ Very Difficult
- ◆◆ Extremely Difficult
- ◆◆◆ Most Difficult

Map Features

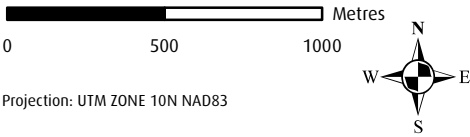
- Road
- Hydro Wire
- - - Municipal Boundary
- Contour - 100m interval
- Contour - 20m Interval
- ▲ Summit
- ~ River or Stream
- Lake
- Mount Work Regional Park
- Other Regional Park
- Other Park/Protected Area
- Mountain Biking Area Boundary
- Hartland Regional Landfill
- ✂ Technical Training Area

Park Amenities

- Accessible Fishing
- Information
- Accessible Parking
- Learning Centre
- Accessible Picnic Area
- Mountain Biking
- Accessible Toilet
- Parking Lot
- Bike Wash
- Swimming
- Boat Launch
- Toilet
- Fishing
- View Point

Trails By Designated Use

- - - Hiking Trail
- Hiking/Mountain Biking Trail
- - - - - Hiking/Mountain Biking/Equestrian Trail
- - - - - Unofficial Trail (Not Maintained)
- User Friendly Trail



Disclaimer
Important This map is for general information purposes only. The Capital Regional District (CRD) makes no representations or warranties regarding the accuracy or completeness of this map or the suitability of the map for any purpose. **This map is not for navigation.** The CRD **will not be liable** for any damage, loss or injury resulting from the use of the map or information on the map and the map may be changed by the CRD at any time.