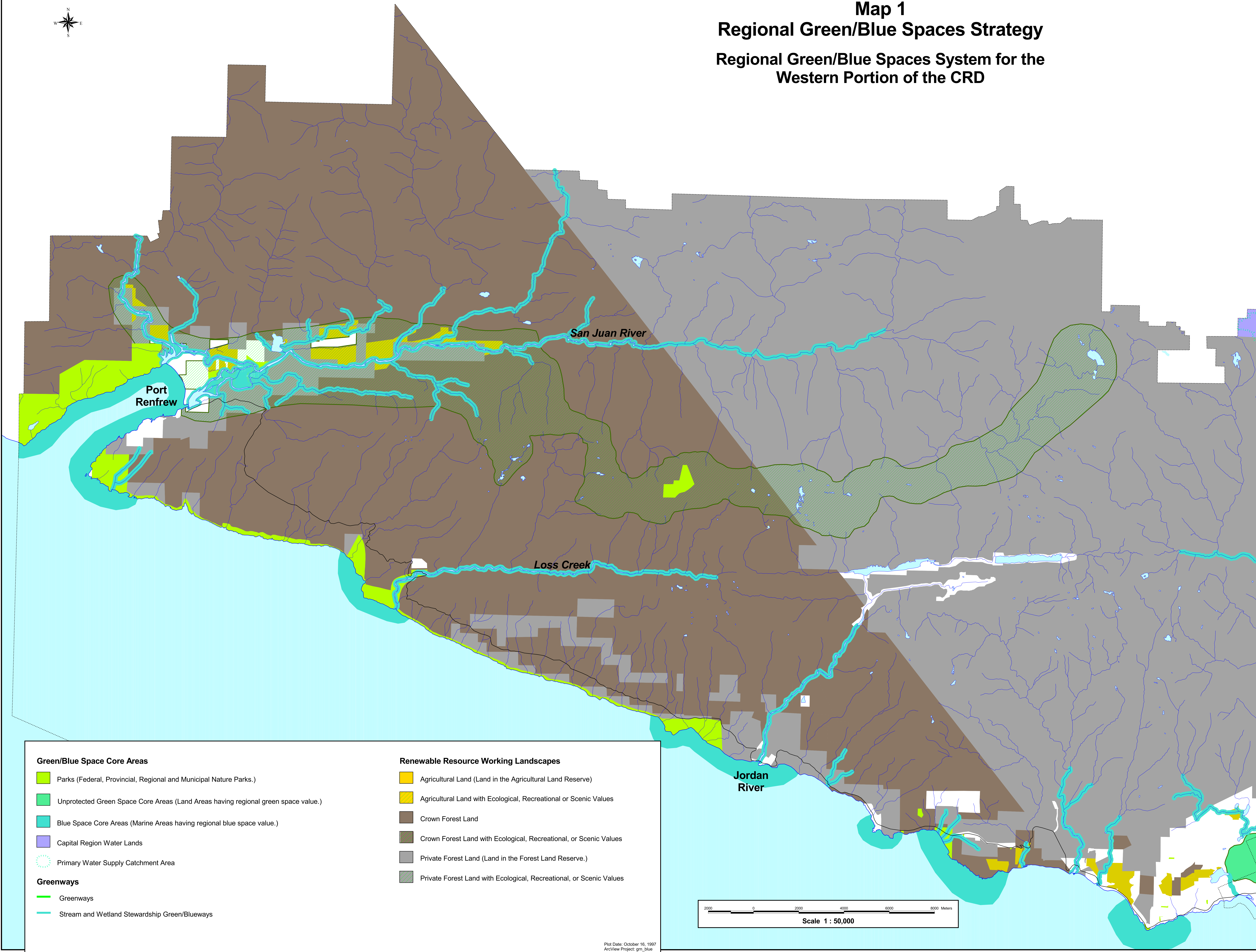
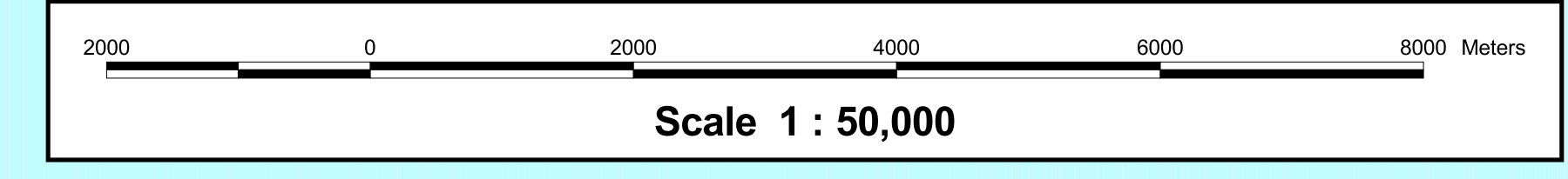


# Map 1 Regional Green/Blue Spaces Strategy Regional Green/Blue Spaces System for the Western Portion of the CRD



- Green/Blue Space Core Areas**
- Parks (Federal, Provincial, Regional and Municipal Nature Parks.)
  - Unprotected Green Space Core Areas (Land Areas having regional green space value.)
  - Blue Space Core Areas (Marine Areas having regional blue space value.)
  - Capital Region Water Lands
  - Primary Water Supply Catchment Area
- Greenways**
- Greenways
  - Stream and Wetland Stewardship Green/Blueways

- Renewable Resource Working Landscapes**
- Agricultural Land (Land in the Agricultural Land Reserve)
  - Agricultural Land with Ecological, Recreational or Scenic Values
  - Crown Forest Land
  - Crown Forest Land with Ecological, Recreational, or Scenic Values
  - Private Forest Land (Land in the Forest Land Reserve.)
  - Private Forest Land with Ecological, Recreational, or Scenic Values



Plot Date: October 16, 1997  
ArcView Project: gm\_blue