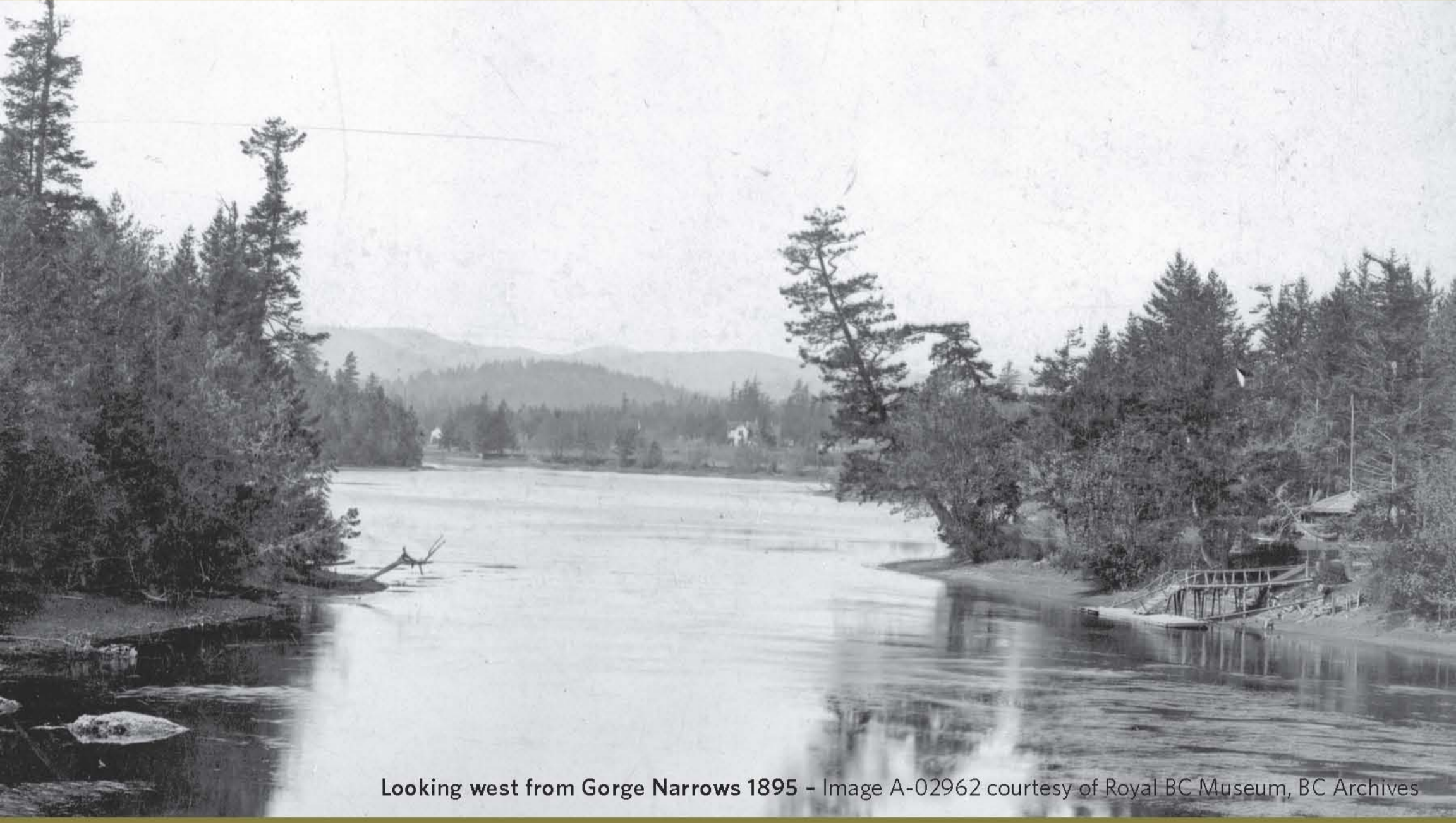




# The Natural Shoreline



Looking west from Gorge Narrows 1895 - Image A-02962 courtesy of Royal BC Museum, BC Archives



Looking west from Gorge Narrows 2010



Nootka rose

PLANTING NATIVE PLANTS such as oceanspray and Nootka rose behind an existing seawall will provide wildlife habitat and help hold soil in place.

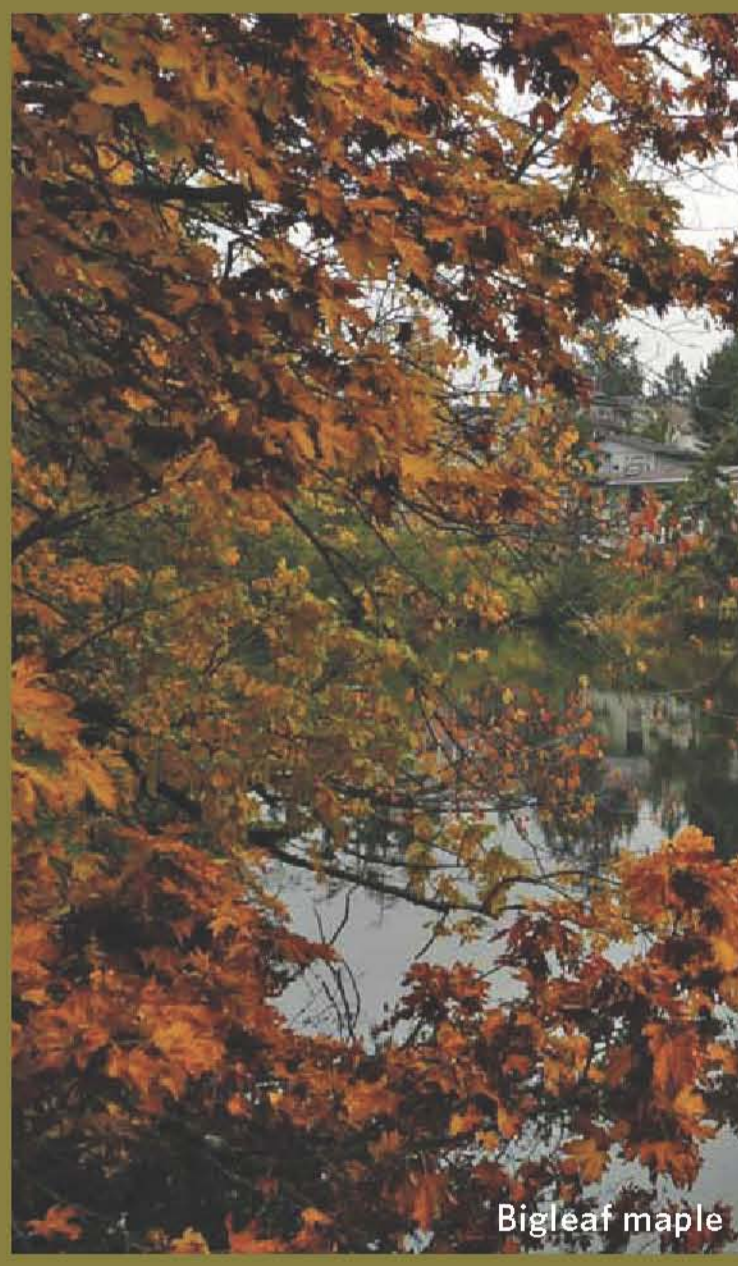
A NATURAL SHORELINE WITH TREES, SHRUBS and understory plants helps to:

- prevent erosion of the foreshore
- provide habitat and food for wildlife
- shade and protect nearshore marine life
- decrease and filter runoff from upland areas

Residents can help the Gorge by gardening with native plants, as this improves habitat and wildlife values. Native plants are more resistant to local pests and diseases and require less water and maintenance.



Douglas-fir



Bigleaf maple



The Gorge in winter

Native trees such as Douglas-fir, arbutus and bigleaf maple provide important roosting and nesting sites for the many seasonal and resident birds that live along the Gorge Waterway.

