

Bowker Creek as it runs through Oak Bay High School (2010-11)



Bowker Creek as it emerges from culvert under the tennis bubble



Oak Bay High on left, municipal recreation centre on right (walled side with track near fence line). Note: invasive plants strongly dominate.

Bowker Creek as it runs through Oak Bay High School (2010-11)



Foot bridge from school to municipal
recreation facilities, creek at average flow



Same perspective of footbridge during a
typical flashy storm event

Bowker Creek as it runs through Oak Bay High School (2010-11)



Oak Bay High on left, municipal recreation centre on right, creek at typical flow.
NOTE: new school will be relocated on site well away from creek & current buildings demolished.



Similar perspective (a little upstream on school site) during a typical flashy storm event

Bowker Creek as it runs through Oak Bay High School (2010-11)



Bowker Creek as it leaves the Oak Bay High site and enters into community park, creek at typical flow

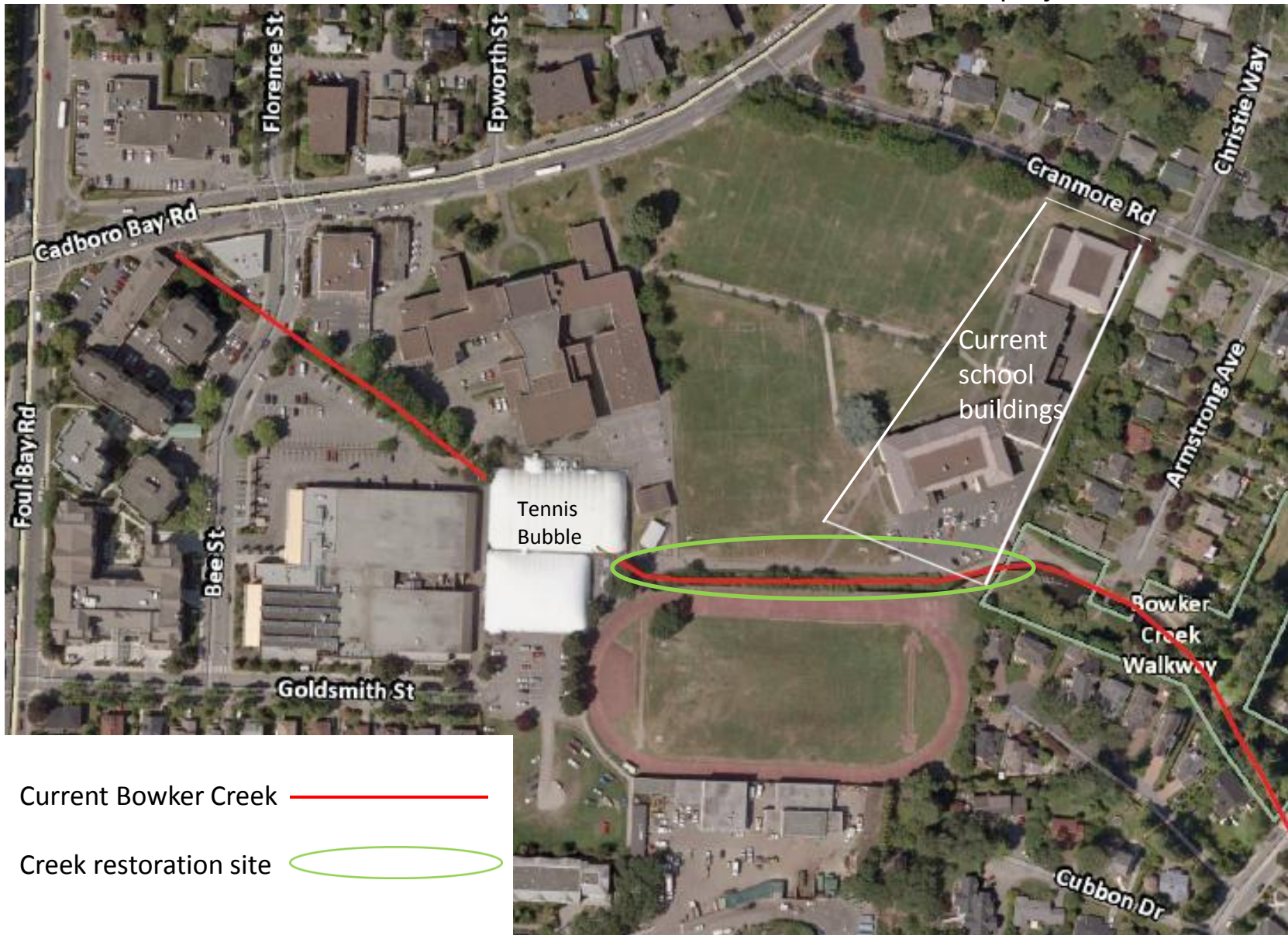


Similar perspective during a typical flash storm event

Bowker Creek as it leaves the Oak Bay High site and enters into community park during a typical flashy storm event (2010)



Current school site with Bowker Creek project area identified (2011)



Proposed new school site plan with Bowker Creek project area identified

