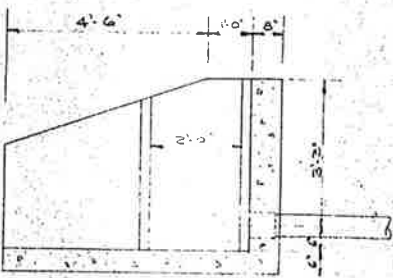
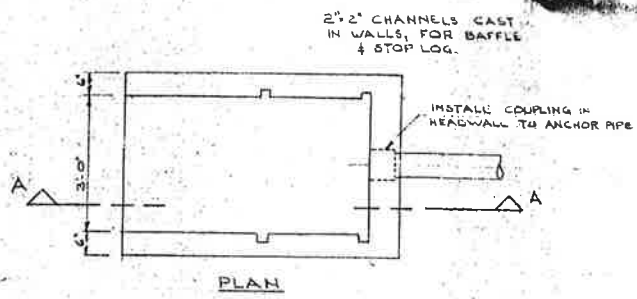
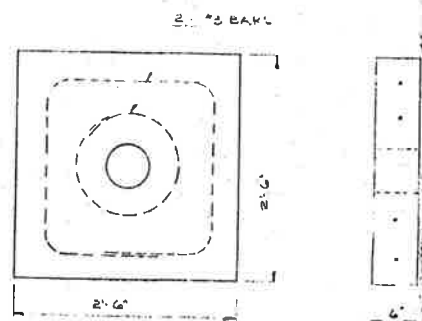


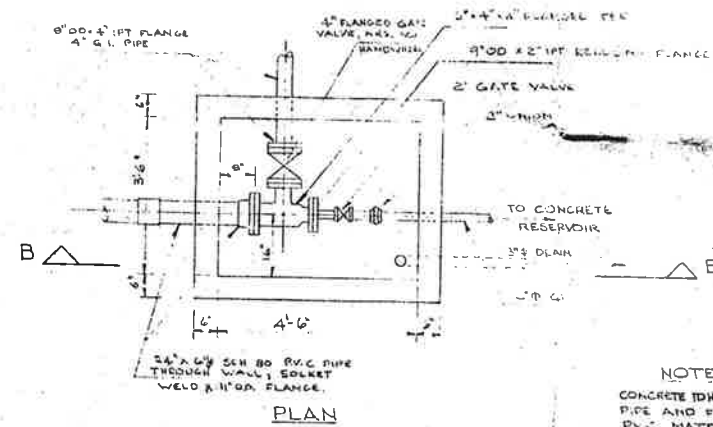
TYPICAL DAM CROSS-SECTION  
 # OUTLET DETAILS.  
 3/8" = 1'-0"



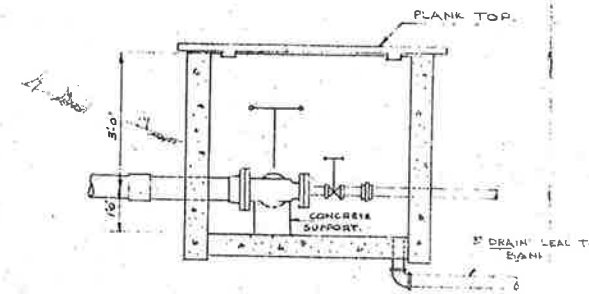
SECTION A-A  
 CONCRETE HEADBOX  
 1/2" = 1'-0"



CONCRETE CUTOFF COLLAR  
 N.T.S.



PLAN

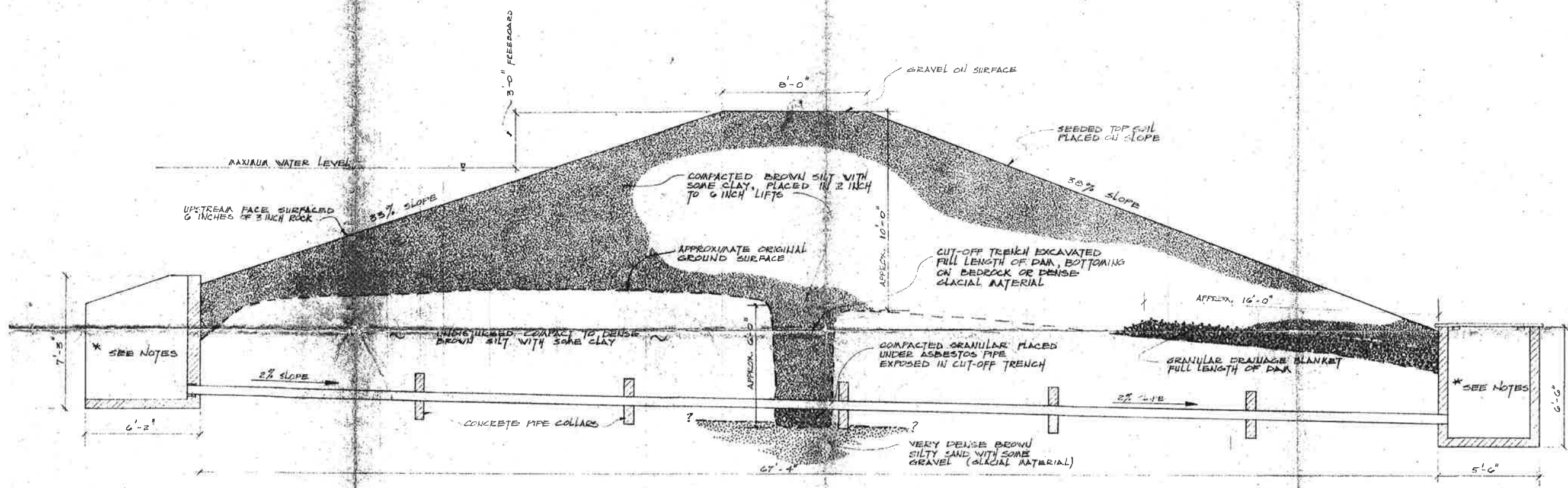


SECTION B-B

OUTLET BOX  
 1/2" = 1'-0"

NOTES:  
 CONCRETE SHALL HAVE COMPRESSIVE STRENGTH OF 2500 PSI AT 28 DAYS.  
 PIPE AND FITTINGS TO APPROPRIATE AWWA SPECIFICATIONS.  
 P.V.C. MATERIALS TO BE APPROVED FOR POTABLE WATER.  
 PIPE & FITTINGS TO BE STERILIZED BEFORE PLACING IN SERVICE.  
 IN ACCORDANCE WITH AWWA SPECIFICATIONS.

<b>GRAEME ENGINEERING LTD.</b> CONSULTING CIVIL AND MUNICIPAL ENGINEERS 631 FORT STREET VICTORIA, B.C.		DESIGN B.G.
MRS. C. A. NOFIELD		DRAWN B.G.
BROWNING HARBOUR SUBDIVISION, SECTION 12, NORTH PENCEL ISLAND.		CHECKED  APPROVED
PROPOSED DAM & OUTLET WORKS.		DATE 7/8/70
		SCALE AS NOTED
		DRAWING NUMBER 124-4



**NOTES:**

- 1) THIS SECTION NOT INTENDED TO SHOW DETAILS OF OUTLET WORKS.
- 2) LOCATION OF CONCRETE PIPE COLLARS SHOWN ARE APPROXIMATE ONLY.
- 3) BOTH ABUTMENTS CONSIST OF BEDROCK WITH RIGHT ABUTMENT SOMEWHAT MORE FRACTURED THAN LEFT.
- 4) EMBANKMENT FLARED AGAINST RIGHT ABUTMENT.

TYPICAL SECTION OF EARTH FILL DAM FOR THE COMMUNITY RESERVOIR, NOFIELD SUBDIVISION RAZOR POINT, NORTH PENDER ISLAND	ISLAND GEOTECHNICAL SERVICES 201-1615 BOWEN RD. NANAIMO, B.C.	REMARKS: KS BUILT (EARTHWORKS ONLY)	SHEET 1 of 1 PROJECT #
		DATE: NOV. 30, 1978 DRAWN: T.S.P. CHECKED: SCALE: 1"=30'-0"	