

**MICHIGAN SQUARE AFFORDABLE HOUSING**  
**REDEVELOPMENT**

---

**ROOF ANCHORS CONTRACT 527-05 50 20**

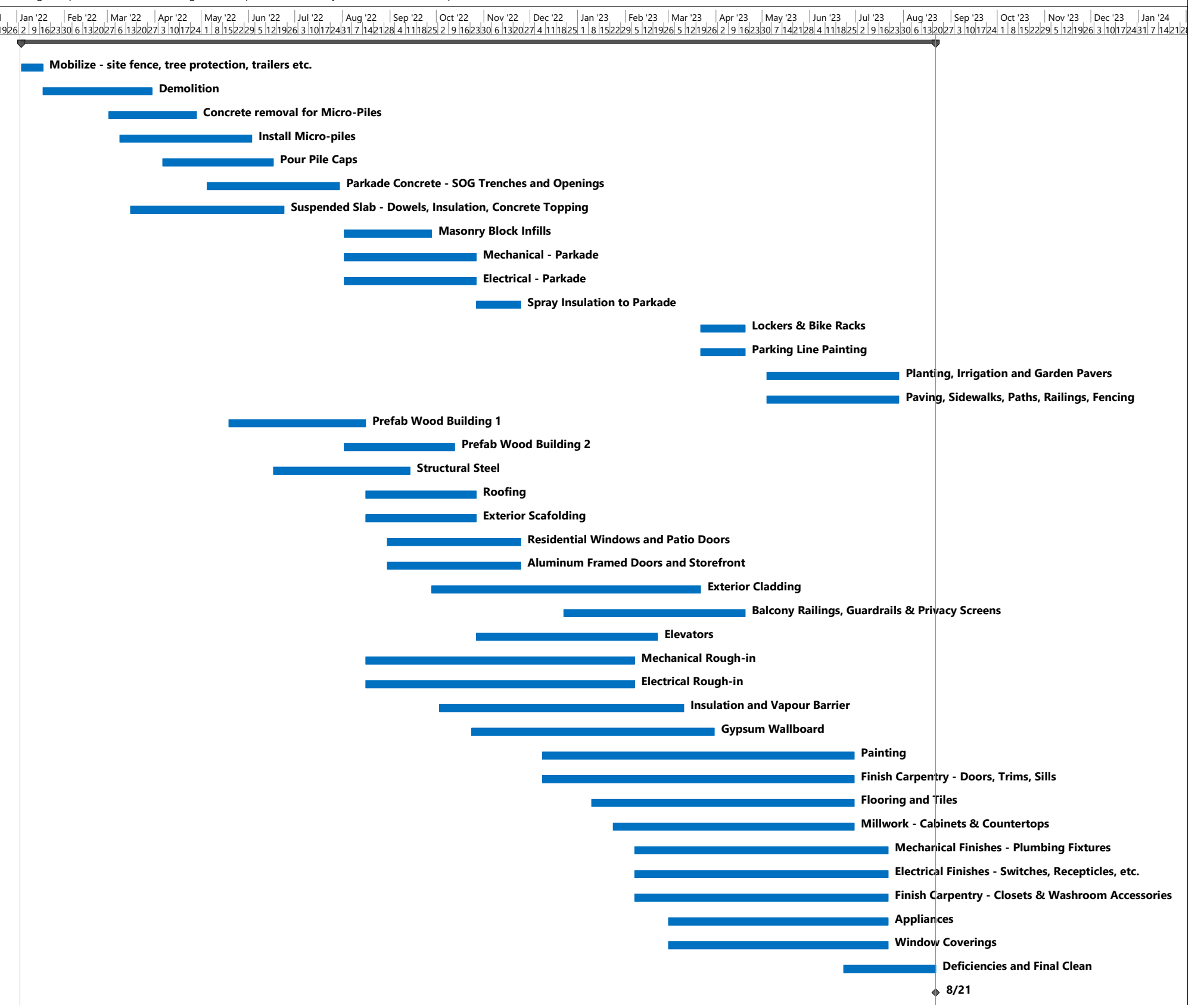
ADDENDUM #1 – September 21, 2021

This addendum is issued for amendment to the RFQ Documents and forms an integral part of the RFQ Documentation. **Trade contractors must acknowledge inclusion of this addendum on the quotation by referencing DCM Addendum #1 and the total number of 2 pages for this addendum.**

1. Refer to attached Preliminary Construction Schedule - DRAFT, as prepared by Durwest Construction Management, dated September 21, 2021, **1 page attached**. This schedule is for reference purposes only and is subject to change.

**END OF ADDENDUM #1**

ID	Task Name	Duration	Start	Finish
1	<b>Construction</b>	<b>410 days</b>	<b>Tue 1/4/22</b>	<b>Mon 8/21/23</b>
2	Mobilize - site fence, tree protection, trailers etc.	10 days	Tue 1/4/22	Mon 1/17/22
3	Demolition	50 days	Tue 1/18/22	Tue 3/29/22
4	Concrete removal for Micro-Piles	40 days	Wed 3/2/22	Wed 4/27/22
5	Install Micro-piles	60 days	Wed 3/9/22	Thu 6/2/22
6	Pour Pile Caps	50 days	Wed 4/6/22	Thu 6/16/22
7	Parkade Concrete - SOG Trenches and Openings	60 days	Thu 5/5/22	Fri 7/29/22
8	Suspended Slab - Dowels, Insulation, Concrete Topping	70 days	Wed 3/16/22	Thu 6/23/22
9	Masonry Block Infills	40 days	Tue 8/2/22	Tue 9/27/22
10	Mechanical - Parkade	60 days	Tue 8/2/22	Wed 10/26/22
11	Electrical - Parkade	60 days	Tue 8/2/22	Wed 10/26/22
12	Spray Insulation to Parkade	20 days	Thu 10/27/22	Thu 11/24/22
13	Lockers & Bike Racks	20 days	Wed 3/22/23	Wed 4/19/23
14	Parking Line Painting	20 days	Wed 3/22/23	Wed 4/19/23
15	Planting, Irrigation and Garden Pavers	60 days	Thu 5/4/23	Fri 7/28/23
16	Paving, Sidewalks, Paths, Railings, Fencing	60 days	Thu 5/4/23	Fri 7/28/23
17	Prefab Wood Building 1	60 days	Thu 5/19/22	Mon 8/15/22
18	Prefab Wood Building 2	50 days	Tue 8/2/22	Wed 10/12/22
19	Structural Steel	60 days	Fri 6/17/22	Tue 9/13/22
20	Roofing	50 days	Tue 8/16/22	Wed 10/26/22
21	Exterior Scaffolding	50 days	Tue 8/16/22	Wed 10/26/22
22	Residential Windows and Patio Doors	60 days	Tue 8/30/22	Thu 11/24/22
23	Aluminum Framed Doors and Storefront	60 days	Tue 8/30/22	Thu 11/24/22
24	Exterior Cladding	120 days	Wed 9/28/22	Tue 3/21/23
25	Balcony Railings, Guardrails & Privacy Screens	80 days	Fri 12/23/22	Wed 4/19/23
26	Elevators	80 days	Thu 10/27/22	Tue 2/21/23
27	Mechanical Rough-in	120 days	Tue 8/16/22	Mon 2/6/23
28	Electrical Rough-in	120 days	Tue 8/16/22	Mon 2/6/23
29	Insulation and Vapour Barrier	110 days	Mon 10/3/22	Fri 3/10/23
30	Gypsum Wallboard	110 days	Mon 10/24/22	Thu 3/30/23
31	Painting	140 days	Fri 12/9/22	Thu 6/29/23
32	Finish Carpentry - Doors, Trims, Sills	140 days	Fri 12/9/22	Thu 6/29/23
33	Flooring and Tiles	120 days	Tue 1/10/23	Thu 6/29/23
34	Millwork - Cabinets & Countertops	110 days	Tue 1/24/23	Thu 6/29/23
35	Mechanical Finishes - Plumbing Fixtures	115 days	Tue 2/7/23	Fri 7/21/23
36	Electrical Finishes - Switches, Recepticles, etc.	115 days	Tue 2/7/23	Fri 7/21/23
37	Finish Carpentry - Closets & Washroom Accessories	115 days	Tue 2/7/23	Fri 7/21/23
38	Appliances	100 days	Wed 3/1/23	Fri 7/21/23
39	Window Coverings	100 days	Wed 3/1/23	Fri 7/21/23
40	Deficiencies and Final Clean	40 days	Fri 6/23/23	Mon 8/21/23
41	Project Complete	0 days	Mon 8/21/23	Mon 8/21/23



Project: Michigan Square  
Date: Tue 9/21/21

Task		Summary		Inactive Milestone		Duration-only		Start-only		External Milestone		Manual Progress	
Split		Project Summary		Inactive Summary		Manual Summary Rollup		Finish-only		Deadline			
Milestone		Inactive Task		Manual Task		Manual Summary		External Tasks		Progress			



**MICHIGAN SQUARE AFFORDABLE HOUSING**  
**REDEVELOPMENT**

---

**VINYL DECKING CONTRACT 527-07 54 19**

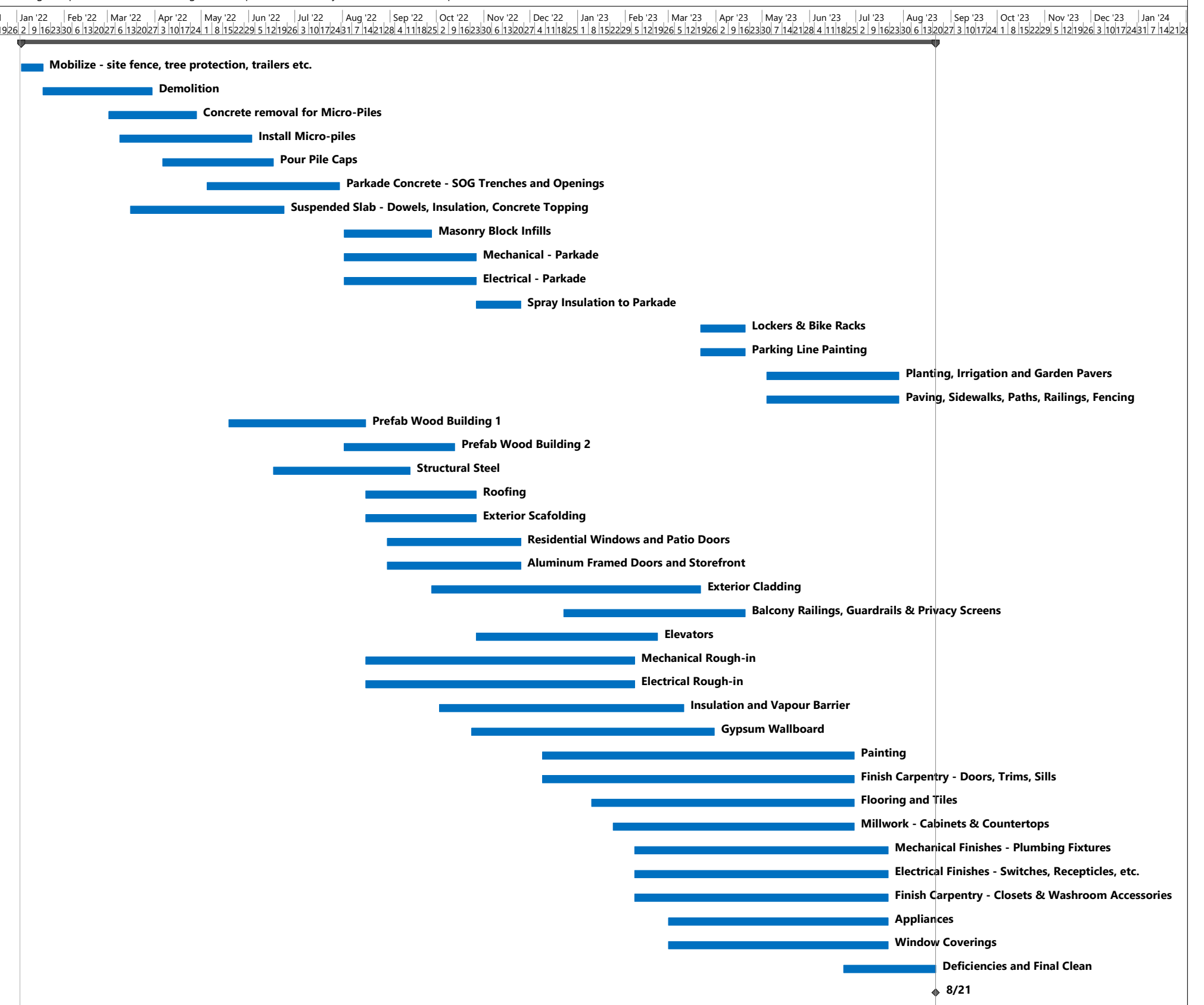
ADDENDUM #1 – September 21, 2021

This addendum is issued for amendment to the RFQ Documents and forms an integral part of the RFQ Documentation. **Trade contractors must acknowledge inclusion of this addendum on the quotation by referencing DCM Addendum #1 and the total number of 2 pages for this addendum.**

1. Refer to attached Preliminary Construction Schedule - DRAFT, as prepared by Durwest Construction Management, dated September 21, 2021, **1 page attached**. This schedule is for reference purposes only and is subject to change.

**END OF ADDENDUM #1**

ID	Task Name	Duration	Start	Finish
1	<b>Construction</b>	<b>410 days</b>	<b>Tue 1/4/22</b>	<b>Mon 8/21/23</b>
2	Mobilize - site fence, tree protection, trailers etc.	10 days	Tue 1/4/22	Mon 1/17/22
3	Demolition	50 days	Tue 1/18/22	Tue 3/29/22
4	Concrete removal for Micro-Piles	40 days	Wed 3/2/22	Wed 4/27/22
5	Install Micro-piles	60 days	Wed 3/9/22	Thu 6/2/22
6	Pour Pile Caps	50 days	Wed 4/6/22	Thu 6/16/22
7	Parkade Concrete - SOG Trenches and Openings	60 days	Thu 5/5/22	Fri 7/29/22
8	Suspended Slab - Dowels, Insulation, Concrete Topping	70 days	Wed 3/16/22	Thu 6/23/22
9	Masonry Block Infills	40 days	Tue 8/2/22	Tue 9/27/22
10	Mechanical - Parkade	60 days	Tue 8/2/22	Wed 10/26/22
11	Electrical - Parkade	60 days	Tue 8/2/22	Wed 10/26/22
12	Spray Insulation to Parkade	20 days	Thu 10/27/22	Thu 11/24/22
13	Lockers & Bike Racks	20 days	Wed 3/22/23	Wed 4/19/23
14	Parking Line Painting	20 days	Wed 3/22/23	Wed 4/19/23
15	Planting, Irrigation and Garden Pavers	60 days	Thu 5/4/23	Fri 7/28/23
16	Paving, Sidewalks, Paths, Railings, Fencing	60 days	Thu 5/4/23	Fri 7/28/23
17	Prefab Wood Building 1	60 days	Thu 5/19/22	Mon 8/15/22
18	Prefab Wood Building 2	50 days	Tue 8/2/22	Wed 10/12/22
19	Structural Steel	60 days	Fri 6/17/22	Tue 9/13/22
20	Roofing	50 days	Tue 8/16/22	Wed 10/26/22
21	Exterior Scaffolding	50 days	Tue 8/16/22	Wed 10/26/22
22	Residential Windows and Patio Doors	60 days	Tue 8/30/22	Thu 11/24/22
23	Aluminum Framed Doors and Storefront	60 days	Tue 8/30/22	Thu 11/24/22
24	Exterior Cladding	120 days	Wed 9/28/22	Tue 3/21/23
25	Balcony Railings, Guardrails & Privacy Screens	80 days	Fri 12/23/22	Wed 4/19/23
26	Elevators	80 days	Thu 10/27/22	Tue 2/21/23
27	Mechanical Rough-in	120 days	Tue 8/16/22	Mon 2/6/23
28	Electrical Rough-in	120 days	Tue 8/16/22	Mon 2/6/23
29	Insulation and Vapour Barrier	110 days	Mon 10/3/22	Fri 3/10/23
30	Gypsum Wallboard	110 days	Mon 10/24/22	Thu 3/30/23
31	Painting	140 days	Fri 12/9/22	Thu 6/29/23
32	Finish Carpentry - Doors, Trims, Sills	140 days	Fri 12/9/22	Thu 6/29/23
33	Flooring and Tiles	120 days	Tue 1/10/23	Thu 6/29/23
34	Millwork - Cabinets & Countertops	110 days	Tue 1/24/23	Thu 6/29/23
35	Mechanical Finishes - Plumbing Fixtures	115 days	Tue 2/7/23	Fri 7/21/23
36	Electrical Finishes - Switches, Recepticles, etc.	115 days	Tue 2/7/23	Fri 7/21/23
37	Finish Carpentry - Closets & Washroom Accessories	115 days	Tue 2/7/23	Fri 7/21/23
38	Appliances	100 days	Wed 3/1/23	Fri 7/21/23
39	Window Coverings	100 days	Wed 3/1/23	Fri 7/21/23
40	Deficiencies and Final Clean	40 days	Fri 6/23/23	Mon 8/21/23
41	Project Complete	0 days	Mon 8/21/23	Mon 8/21/23



Project: Michigan Square  
Date: Tue 9/21/21

Task		Summary		Inactive Milestone		Duration-only		Start-only		External Milestone		Manual Progress	
Split		Project Summary		Inactive Summary		Manual Summary Rollup		Finish-only		Deadline			
Milestone		Inactive Task		Manual Task		Manual Summary		External Tasks		Progress			



**MICHIGAN SQUARE AFFORDABLE HOUSING**  
**REDEVELOPMENT**

---

**DOORS, FRAMES & HARDWARE CONTRACT 527-08 10 00**

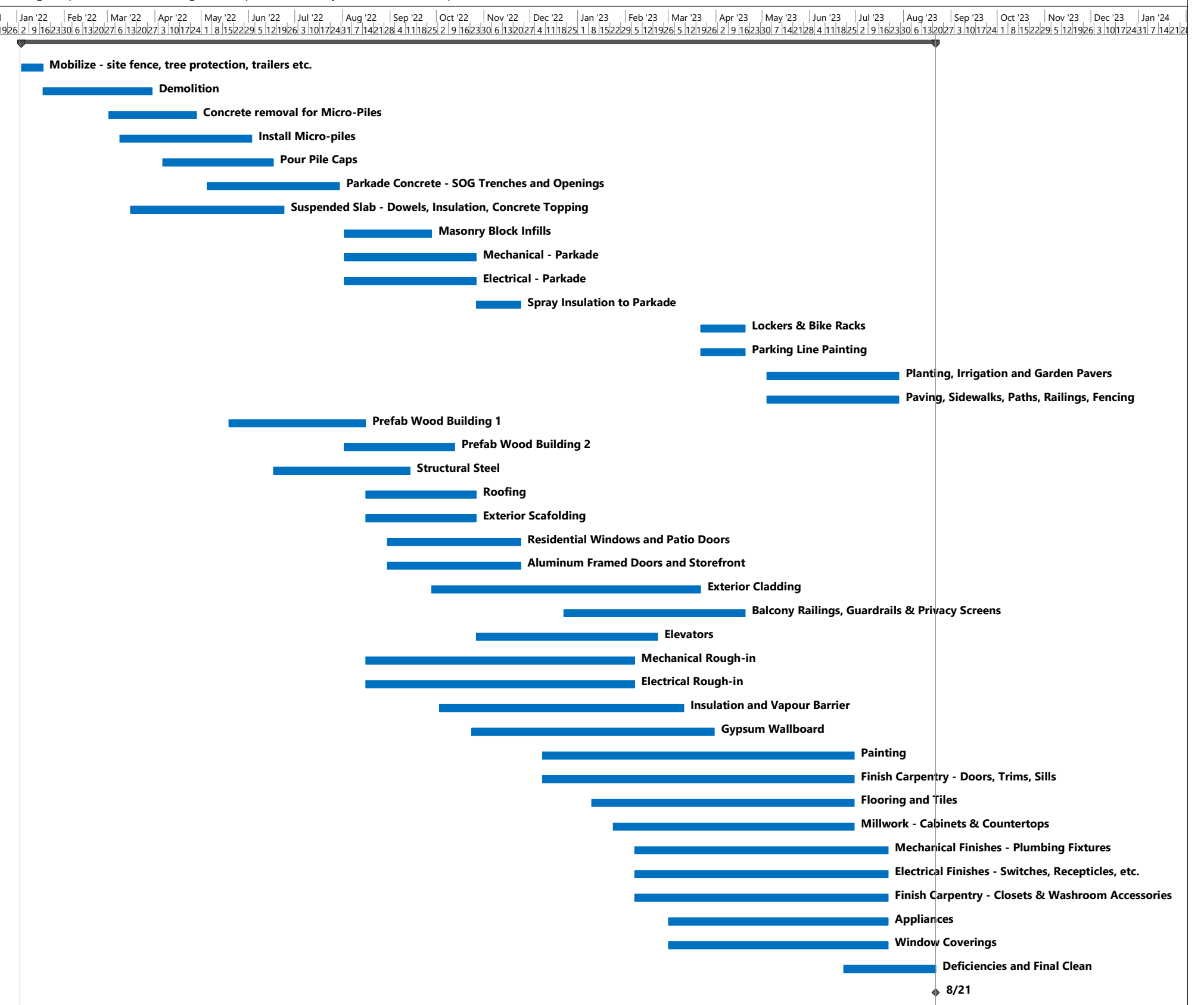
ADDENDUM #1 – September 21, 2021

This addendum is issued for amendment to the RFQ Documents and forms an integral part of the RFQ Documentation. **Trade contractors must acknowledge inclusion of this addendum on the quotation by referencing DCM Addendum #1 and the total number of 2 pages for this addendum.**

1. Refer to attached Preliminary Construction Schedule - DRAFT, as prepared by Durwest Construction Management, dated September 21, 2021, **1 page attached**. This schedule is for reference purposes only and is subject to change.

**END OF ADDENDUM #1**

ID	Task Name	Duration	Start	Finish
1	<b>Construction</b>	<b>410 days</b>	<b>Tue 1/4/22</b>	<b>Mon 8/21/23</b>
2	Mobilize - site fence, tree protection, trailers etc.	10 days	Tue 1/4/22	Mon 1/17/22
3	Demolition	50 days	Tue 1/18/22	Tue 3/29/22
4	Concrete removal for Micro-Piles	40 days	Wed 3/2/22	Wed 4/27/22
5	Install Micro-piles	60 days	Wed 3/9/22	Thu 6/2/22
6	Pour Pile Caps	50 days	Wed 4/6/22	Thu 6/16/22
7	Parkade Concrete - SOG Trenches and Openings	60 days	Thu 5/5/22	Fri 7/29/22
8	Suspended Slab - Dowels, Insulation, Concrete Topping	70 days	Wed 3/16/22	Thu 6/23/22
9	Masonry Block Infills	40 days	Tue 8/2/22	Tue 9/27/22
10	Mechanical - Parkade	60 days	Tue 8/2/22	Wed 10/26/22
11	Electrical - Parkade	60 days	Tue 8/2/22	Wed 10/26/22
12	Spray Insulation to Parkade	20 days	Thu 10/27/22	Thu 11/24/22
13	Lockers & Bike Racks	20 days	Wed 3/22/23	Wed 4/19/23
14	Parking Line Painting	20 days	Wed 3/22/23	Wed 4/19/23
15	Planting, Irrigation and Garden Pavers	60 days	Thu 5/4/23	Fri 7/28/23
16	Paving, Sidewalks, Paths, Railings, Fencing	60 days	Thu 5/4/23	Fri 7/28/23
17	Prefab Wood Building 1	60 days	Thu 5/19/22	Mon 8/15/22
18	Prefab Wood Building 2	50 days	Tue 8/2/22	Wed 10/12/22
19	Structural Steel	60 days	Fri 6/17/22	Tue 9/13/22
20	Roofing	50 days	Tue 8/16/22	Wed 10/26/22
21	Exterior Scaffolding	50 days	Tue 8/16/22	Wed 10/26/22
22	Residential Windows and Patio Doors	60 days	Tue 8/30/22	Thu 11/24/22
23	Aluminum Framed Doors and Storefront	60 days	Tue 8/30/22	Thu 11/24/22
24	Exterior Cladding	120 days	Wed 9/28/22	Tue 3/21/23
25	Balcony Railings, Guardrails & Privacy Screens	80 days	Fri 12/23/22	Wed 4/19/23
26	Elevators	80 days	Thu 10/27/22	Tue 2/21/23
27	Mechanical Rough-in	120 days	Tue 8/16/22	Mon 2/6/23
28	Electrical Rough-in	120 days	Tue 8/16/22	Mon 2/6/23
29	Insulation and Vapour Barrier	110 days	Mon 10/3/22	Fri 3/10/23
30	Gypsum Wallboard	110 days	Mon 10/24/22	Thu 3/30/23
31	Painting	140 days	Fri 12/9/22	Thu 6/29/23
32	Finish Carpentry - Doors, Trims, Sills	140 days	Fri 12/9/22	Thu 6/29/23
33	Flooring and Tiles	120 days	Tue 1/10/23	Thu 6/29/23
34	Millwork - Cabinets & Countertops	110 days	Tue 1/24/23	Thu 6/29/23
35	Mechanical Finishes - Plumbing Fixtures	115 days	Tue 2/7/23	Fri 7/21/23
36	Electrical Finishes - Switches, Recepticles, etc.	115 days	Tue 2/7/23	Fri 7/21/23
37	Finish Carpentry - Closets & Washroom Accessories	115 days	Tue 2/7/23	Fri 7/21/23
38	Appliances	100 days	Wed 3/1/23	Fri 7/21/23
39	Window Coverings	100 days	Wed 3/1/23	Fri 7/21/23
40	Deficiencies and Final Clean	40 days	Fri 6/23/23	Mon 8/21/23
41	Project Complete	0 days	Mon 8/21/23	Mon 8/21/23



Project: Michigan Square  
Date: Tue 9/21/21

Task		Summary		Inactive Milestone		Duration-only		Start-only		External Milestone		Manual Progress	
Split		Project Summary		Inactive Summary		Manual Summary Rollup		Finish-only		Deadline			
Milestone		Inactive Task		Manual Task		Manual Summary		External Tasks		Progress			



**MICHIGAN SQUARE AFFORDABLE HOUSING**  
**REDEVELOPMENT**

---

**VINYL WINDOWS & DOORS CONTRACT 527-08 53 00**

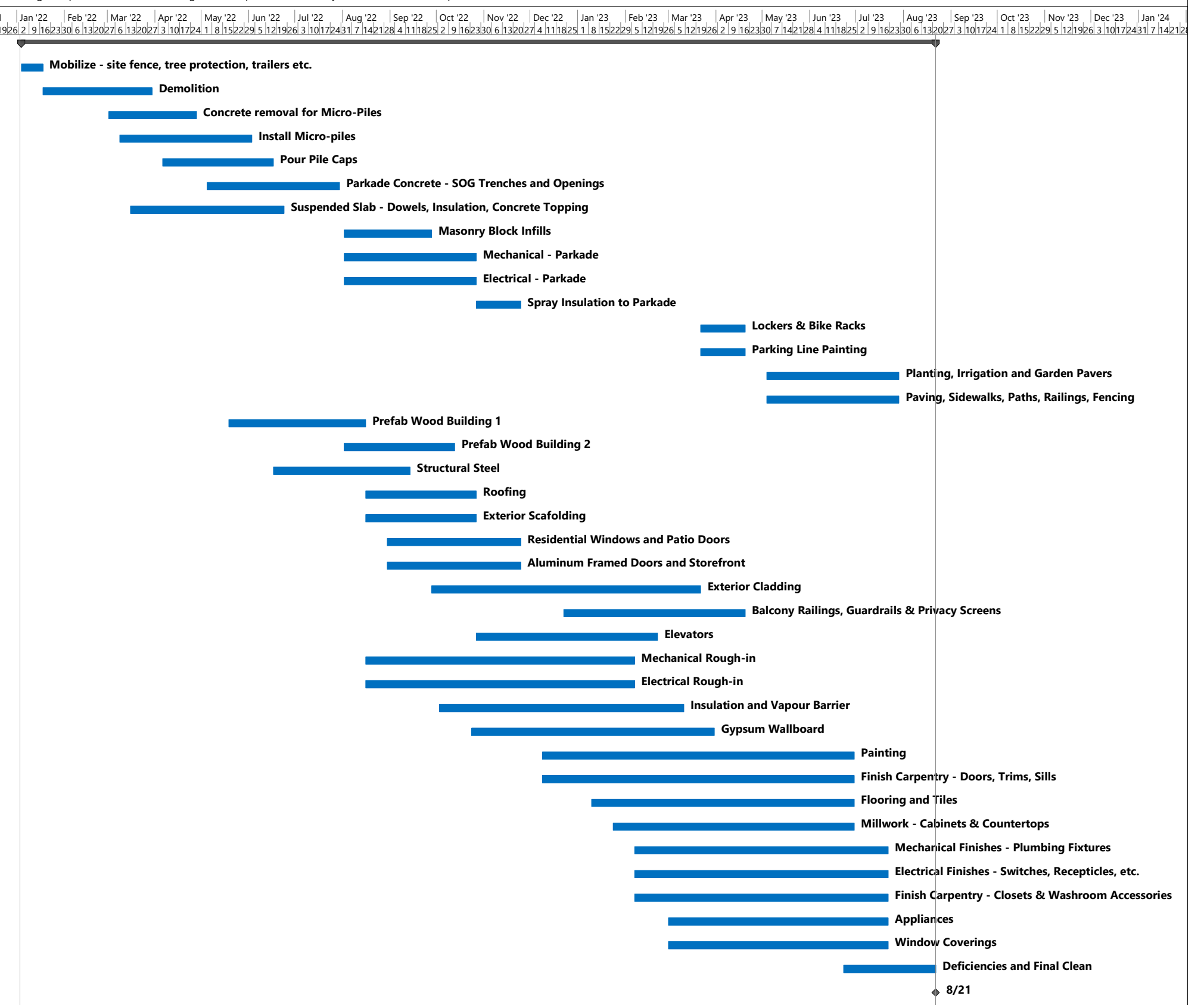
ADDENDUM #1 – September 21, 2021

This addendum is issued for amendment to the RFQ Documents and forms an integral part of the RFQ Documentation. **Trade contractors must acknowledge inclusion of this addendum on the quotation by referencing DCM Addendum #1 and the total number of 2 pages for this addendum.**

1. Refer to attached Preliminary Construction Schedule - DRAFT, as prepared by Durwest Construction Management, dated September 21, 2021, **1 page attached**. This schedule is for reference purposes only and is subject to change.
2. **CLARIFICATION:** It has been confirmed that the vinyl/plastic windows are to be charcoal black colour on both the interior and the exterior.

**END OF ADDENDUM #1**

ID	Task Name	Duration	Start	Finish
1	<b>Construction</b>	<b>410 days</b>	<b>Tue 1/4/22</b>	<b>Mon 8/21/23</b>
2	Mobilize - site fence, tree protection, trailers etc.	10 days	Tue 1/4/22	Mon 1/17/22
3	Demolition	50 days	Tue 1/18/22	Tue 3/29/22
4	Concrete removal for Micro-Piles	40 days	Wed 3/2/22	Wed 4/27/22
5	Install Micro-piles	60 days	Wed 3/9/22	Thu 6/2/22
6	Pour Pile Caps	50 days	Wed 4/6/22	Thu 6/16/22
7	Parkade Concrete - SOG Trenches and Openings	60 days	Thu 5/5/22	Fri 7/29/22
8	Suspended Slab - Dowels, Insulation, Concrete Topping	70 days	Wed 3/16/22	Thu 6/23/22
9	Masonry Block Infills	40 days	Tue 8/2/22	Tue 9/27/22
10	Mechanical - Parkade	60 days	Tue 8/2/22	Wed 10/26/22
11	Electrical - Parkade	60 days	Tue 8/2/22	Wed 10/26/22
12	Spray Insulation to Parkade	20 days	Thu 10/27/22	Thu 11/24/22
13	Lockers & Bike Racks	20 days	Wed 3/22/23	Wed 4/19/23
14	Parking Line Painting	20 days	Wed 3/22/23	Wed 4/19/23
15	Planting, Irrigation and Garden Pavers	60 days	Thu 5/4/23	Fri 7/28/23
16	Paving, Sidewalks, Paths, Railings, Fencing	60 days	Thu 5/4/23	Fri 7/28/23
17	Prefab Wood Building 1	60 days	Thu 5/19/22	Mon 8/15/22
18	Prefab Wood Building 2	50 days	Tue 8/2/22	Wed 10/12/22
19	Structural Steel	60 days	Fri 6/17/22	Tue 9/13/22
20	Roofing	50 days	Tue 8/16/22	Wed 10/26/22
21	Exterior Scaffolding	50 days	Tue 8/16/22	Wed 10/26/22
22	Residential Windows and Patio Doors	60 days	Tue 8/30/22	Thu 11/24/22
23	Aluminum Framed Doors and Storefront	60 days	Tue 8/30/22	Thu 11/24/22
24	Exterior Cladding	120 days	Wed 9/28/22	Tue 3/21/23
25	Balcony Railings, Guardrails & Privacy Screens	80 days	Fri 12/23/22	Wed 4/19/23
26	Elevators	80 days	Thu 10/27/22	Tue 2/21/23
27	Mechanical Rough-in	120 days	Tue 8/16/22	Mon 2/6/23
28	Electrical Rough-in	120 days	Tue 8/16/22	Mon 2/6/23
29	Insulation and Vapour Barrier	110 days	Mon 10/3/22	Fri 3/10/23
30	Gypsum Wallboard	110 days	Mon 10/24/22	Thu 3/30/23
31	Painting	140 days	Fri 12/9/22	Thu 6/29/23
32	Finish Carpentry - Doors, Trims, Sills	140 days	Fri 12/9/22	Thu 6/29/23
33	Flooring and Tiles	120 days	Tue 1/10/23	Thu 6/29/23
34	Millwork - Cabinets & Countertops	110 days	Tue 1/24/23	Thu 6/29/23
35	Mechanical Finishes - Plumbing Fixtures	115 days	Tue 2/7/23	Fri 7/21/23
36	Electrical Finishes - Switches, Recepticles, etc.	115 days	Tue 2/7/23	Fri 7/21/23
37	Finish Carpentry - Closets & Washroom Accessories	115 days	Tue 2/7/23	Fri 7/21/23
38	Appliances	100 days	Wed 3/1/23	Fri 7/21/23
39	Window Coverings	100 days	Wed 3/1/23	Fri 7/21/23
40	Deficiencies and Final Clean	40 days	Fri 6/23/23	Mon 8/21/23
41	Project Complete	0 days	Mon 8/21/23	Mon 8/21/23



Project: Michigan Square  
Date: Tue 9/21/21

Task		Summary		Inactive Milestone		Duration-only		Start-only		External Milestone		Manual Progress	
Split		Project Summary		Inactive Summary		Manual Summary Rollup		Finish-only		Deadline			
Milestone		Inactive Task		Manual Task		Manual Summary		External Tasks		Progress			





**MICHIGAN SQUARE AFFORDABLE HOUSING**  
**REDEVELOPMENT**

---

**SPECIALTIES CONTRACT 527-10 00 00**

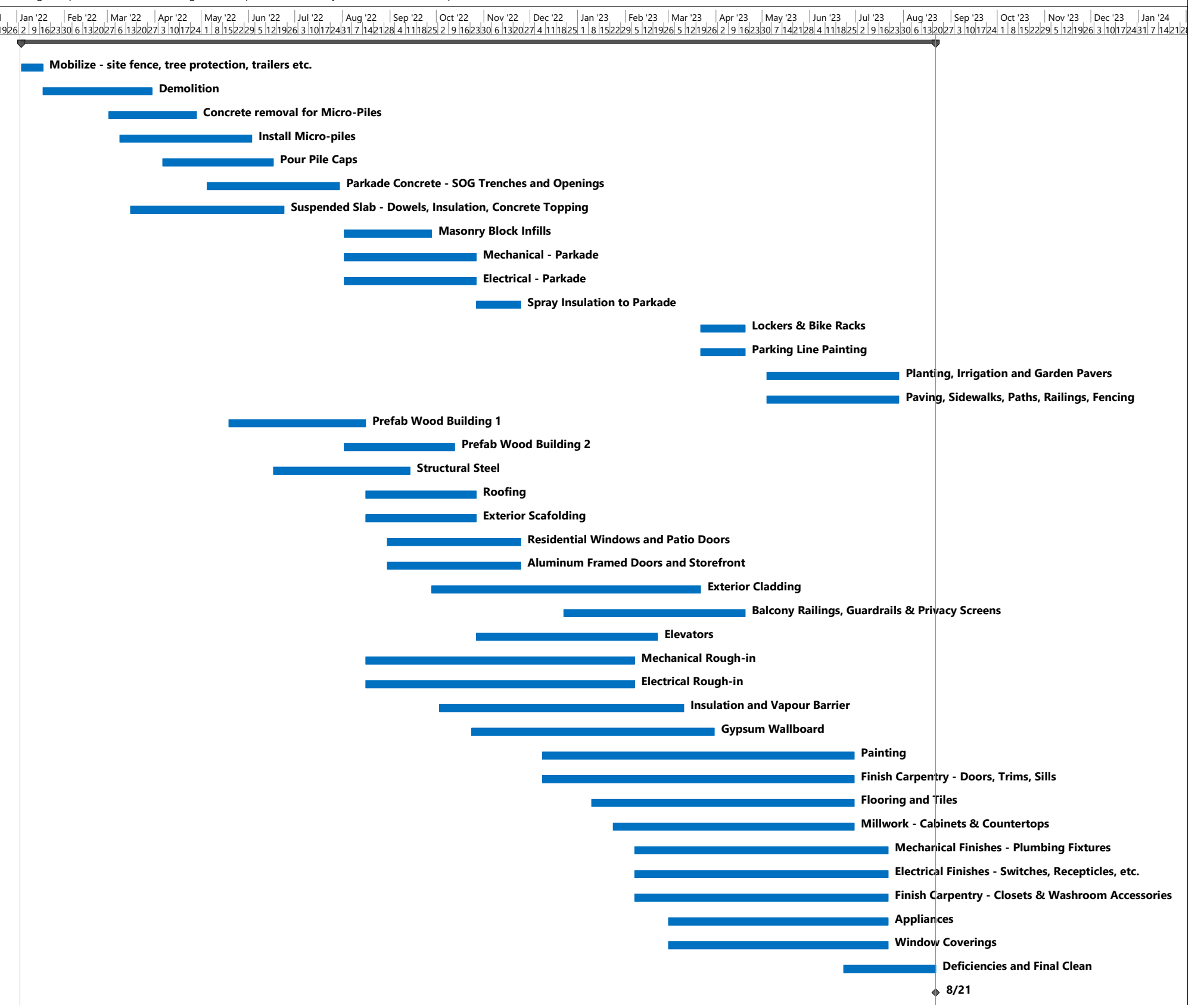
ADDENDUM #1 – September 21, 2021

This addendum is issued for amendment to the RFQ Documents and forms an integral part of the RFQ Documentation. **Trade contractors must acknowledge inclusion of this addendum on the quotation by referencing DCM Addendum #1 and the total number of 2 pages for this addendum.**

1. Refer to attached Preliminary Construction Schedule - DRAFT, as prepared by Durwest Construction Management, dated September 21, 2021, **1 page attached**. This schedule is for reference purposes only and is subject to change.

**END OF ADDENDUM #1**

ID	Task Name	Duration	Start	Finish
1	<b>Construction</b>	<b>410 days</b>	<b>Tue 1/4/22</b>	<b>Mon 8/21/23</b>
2	Mobilize - site fence, tree protection, trailers etc.	10 days	Tue 1/4/22	Mon 1/17/22
3	Demolition	50 days	Tue 1/18/22	Tue 3/29/22
4	Concrete removal for Micro-Piles	40 days	Wed 3/2/22	Wed 4/27/22
5	Install Micro-piles	60 days	Wed 3/9/22	Thu 6/2/22
6	Pour Pile Caps	50 days	Wed 4/6/22	Thu 6/16/22
7	Parkade Concrete - SOG Trenches and Openings	60 days	Thu 5/5/22	Fri 7/29/22
8	Suspended Slab - Dowels, Insulation, Concrete Topping	70 days	Wed 3/16/22	Thu 6/23/22
9	Masonry Block Infills	40 days	Tue 8/2/22	Tue 9/27/22
10	Mechanical - Parkade	60 days	Tue 8/2/22	Wed 10/26/22
11	Electrical - Parkade	60 days	Tue 8/2/22	Wed 10/26/22
12	Spray Insulation to Parkade	20 days	Thu 10/27/22	Thu 11/24/22
13	Lockers & Bike Racks	20 days	Wed 3/22/23	Wed 4/19/23
14	Parking Line Painting	20 days	Wed 3/22/23	Wed 4/19/23
15	Planting, Irrigation and Garden Pavers	60 days	Thu 5/4/23	Fri 7/28/23
16	Paving, Sidewalks, Paths, Railings, Fencing	60 days	Thu 5/4/23	Fri 7/28/23
17	Prefab Wood Building 1	60 days	Thu 5/19/22	Mon 8/15/22
18	Prefab Wood Building 2	50 days	Tue 8/2/22	Wed 10/12/22
19	Structural Steel	60 days	Fri 6/17/22	Tue 9/13/22
20	Roofing	50 days	Tue 8/16/22	Wed 10/26/22
21	Exterior Scaffolding	50 days	Tue 8/16/22	Wed 10/26/22
22	Residential Windows and Patio Doors	60 days	Tue 8/30/22	Thu 11/24/22
23	Aluminum Framed Doors and Storefront	60 days	Tue 8/30/22	Thu 11/24/22
24	Exterior Cladding	120 days	Wed 9/28/22	Tue 3/21/23
25	Balcony Railings, Guardrails & Privacy Screens	80 days	Fri 12/23/22	Wed 4/19/23
26	Elevators	80 days	Thu 10/27/22	Tue 2/21/23
27	Mechanical Rough-in	120 days	Tue 8/16/22	Mon 2/6/23
28	Electrical Rough-in	120 days	Tue 8/16/22	Mon 2/6/23
29	Insulation and Vapour Barrier	110 days	Mon 10/3/22	Fri 3/10/23
30	Gypsum Wallboard	110 days	Mon 10/24/22	Thu 3/30/23
31	Painting	140 days	Fri 12/9/22	Thu 6/29/23
32	Finish Carpentry - Doors, Trims, Sills	140 days	Fri 12/9/22	Thu 6/29/23
33	Flooring and Tiles	120 days	Tue 1/10/23	Thu 6/29/23
34	Millwork - Cabinets & Countertops	110 days	Tue 1/24/23	Thu 6/29/23
35	Mechanical Finishes - Plumbing Fixtures	115 days	Tue 2/7/23	Fri 7/21/23
36	Electrical Finishes - Switches, Recepticles, etc.	115 days	Tue 2/7/23	Fri 7/21/23
37	Finish Carpentry - Closets & Washroom Accessories	115 days	Tue 2/7/23	Fri 7/21/23
38	Appliances	100 days	Wed 3/1/23	Fri 7/21/23
39	Window Coverings	100 days	Wed 3/1/23	Fri 7/21/23
40	Deficiencies and Final Clean	40 days	Fri 6/23/23	Mon 8/21/23
41	Project Complete	0 days	Mon 8/21/23	Mon 8/21/23



Project: Michigan Square  
Date: Tue 9/21/21

Task		Summary		Inactive Milestone		Duration-only		Start-only		External Milestone		Manual Progress	
Split		Project Summary		Inactive Summary		Manual Summary Rollup		Finish-only		Deadline			
Milestone		Inactive Task		Manual Task		Manual Summary		External Tasks		Progress			



# **MICHIGAN SQUARE AFFORDABLE HOUSING** **REDEVELOPMENT**

---

## **APPLIANCES SUPPLY CONTRACT 527-11 30 13**

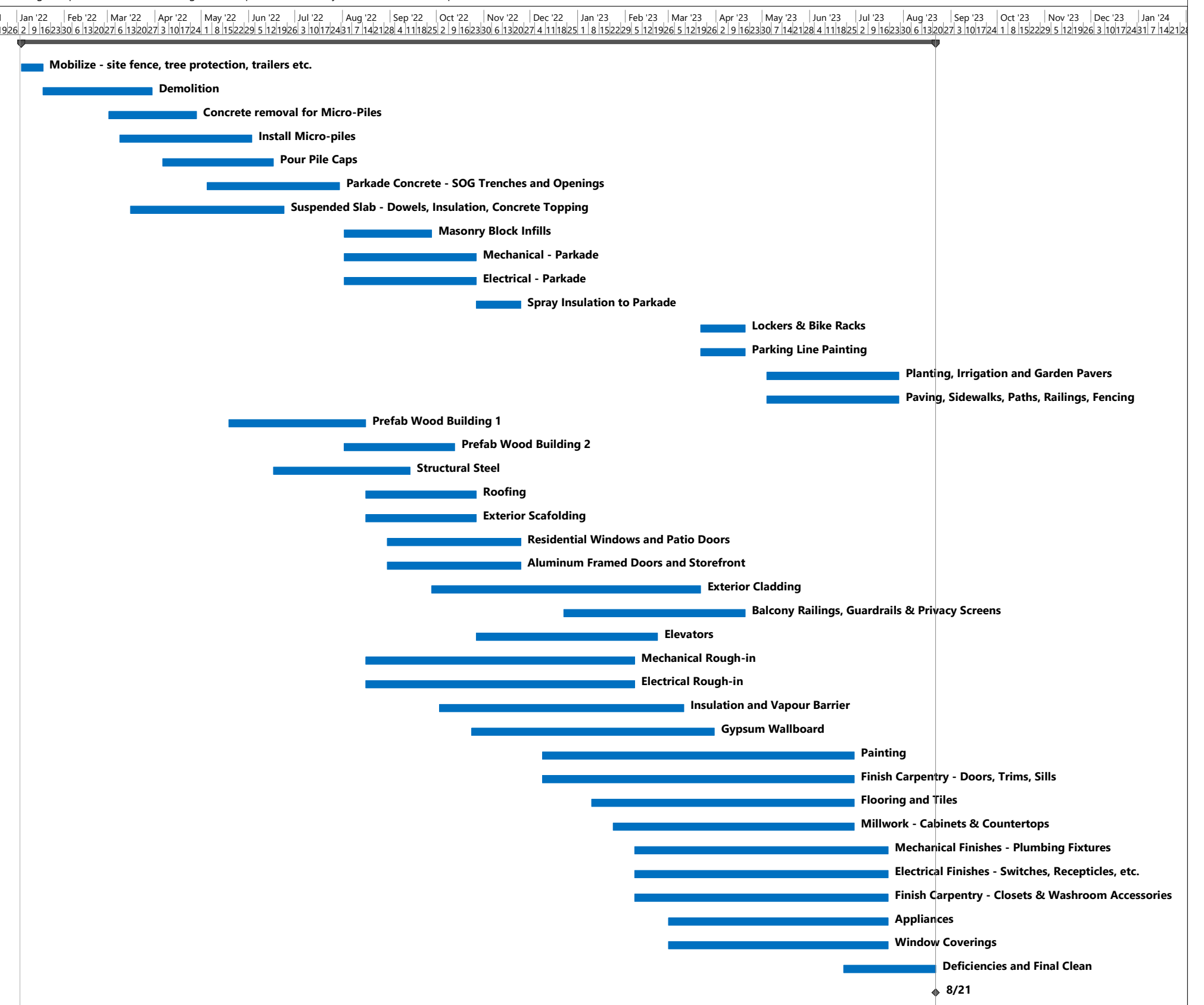
ADDENDUM #1 – September 21, 2021

This addendum is issued for amendment to the RFQ Documents and forms an integral part of the RFQ Documentation. **Trade contractors must acknowledge inclusion of this addendum on the quotation by referencing DCM Addendum #1 and the total number of 2 pages for this addendum.**

1. Refer to attached Preliminary Construction Schedule - DRAFT, as prepared by Durwest Construction Management, dated September 21, 2021, **1 page attached**. This schedule is for reference purposes only and is subject to change.
2. **CLARIFICATION:** Commercial laundry equipment as specified is to be included in this scope of work. This is located in the parkade level in room P12 TH LAUNDRY.
3. **CLARIFICATION:** Please include for the supply of light bulbs with the specified hood fans.

**END OF ADDENDUM #1**

ID	Task Name	Duration	Start	Finish
1	<b>Construction</b>	<b>410 days</b>	<b>Tue 1/4/22</b>	<b>Mon 8/21/23</b>
2	Mobilize - site fence, tree protection, trailers etc.	10 days	Tue 1/4/22	Mon 1/17/22
3	Demolition	50 days	Tue 1/18/22	Tue 3/29/22
4	Concrete removal for Micro-Piles	40 days	Wed 3/2/22	Wed 4/27/22
5	Install Micro-piles	60 days	Wed 3/9/22	Thu 6/2/22
6	Pour Pile Caps	50 days	Wed 4/6/22	Thu 6/16/22
7	Parkade Concrete - SOG Trenches and Openings	60 days	Thu 5/5/22	Fri 7/29/22
8	Suspended Slab - Dowels, Insulation, Concrete Topping	70 days	Wed 3/16/22	Thu 6/23/22
9	Masonry Block Infills	40 days	Tue 8/2/22	Tue 9/27/22
10	Mechanical - Parkade	60 days	Tue 8/2/22	Wed 10/26/22
11	Electrical - Parkade	60 days	Tue 8/2/22	Wed 10/26/22
12	Spray Insulation to Parkade	20 days	Thu 10/27/22	Thu 11/24/22
13	Lockers & Bike Racks	20 days	Wed 3/22/23	Wed 4/19/23
14	Parking Line Painting	20 days	Wed 3/22/23	Wed 4/19/23
15	Planting, Irrigation and Garden Pavers	60 days	Thu 5/4/23	Fri 7/28/23
16	Paving, Sidewalks, Paths, Railings, Fencing	60 days	Thu 5/4/23	Fri 7/28/23
17	Prefab Wood Building 1	60 days	Thu 5/19/22	Mon 8/15/22
18	Prefab Wood Building 2	50 days	Tue 8/2/22	Wed 10/12/22
19	Structural Steel	60 days	Fri 6/17/22	Tue 9/13/22
20	Roofing	50 days	Tue 8/16/22	Wed 10/26/22
21	Exterior Scaffolding	50 days	Tue 8/16/22	Wed 10/26/22
22	Residential Windows and Patio Doors	60 days	Tue 8/30/22	Thu 11/24/22
23	Aluminum Framed Doors and Storefront	60 days	Tue 8/30/22	Thu 11/24/22
24	Exterior Cladding	120 days	Wed 9/28/22	Tue 3/21/23
25	Balcony Railings, Guardrails & Privacy Screens	80 days	Fri 12/23/22	Wed 4/19/23
26	Elevators	80 days	Thu 10/27/22	Tue 2/21/23
27	Mechanical Rough-in	120 days	Tue 8/16/22	Mon 2/6/23
28	Electrical Rough-in	120 days	Tue 8/16/22	Mon 2/6/23
29	Insulation and Vapour Barrier	110 days	Mon 10/3/22	Fri 3/10/23
30	Gypsum Wallboard	110 days	Mon 10/24/22	Thu 3/30/23
31	Painting	140 days	Fri 12/9/22	Thu 6/29/23
32	Finish Carpentry - Doors, Trims, Sills	140 days	Fri 12/9/22	Thu 6/29/23
33	Flooring and Tiles	120 days	Tue 1/10/23	Thu 6/29/23
34	Millwork - Cabinets & Countertops	110 days	Tue 1/24/23	Thu 6/29/23
35	Mechanical Finishes - Plumbing Fixtures	115 days	Tue 2/7/23	Fri 7/21/23
36	Electrical Finishes - Switches, Recepticles, etc.	115 days	Tue 2/7/23	Fri 7/21/23
37	Finish Carpentry - Closets & Washroom Accessories	115 days	Tue 2/7/23	Fri 7/21/23
38	Appliances	100 days	Wed 3/1/23	Fri 7/21/23
39	Window Coverings	100 days	Wed 3/1/23	Fri 7/21/23
40	Deficiencies and Final Clean	40 days	Fri 6/23/23	Mon 8/21/23
41	Project Complete	0 days	Mon 8/21/23	Mon 8/21/23



Project: Michigan Square  
Date: Tue 9/21/21

Task		Summary		Inactive Milestone		Duration-only		Start-only		External Milestone		Manual Progress	
Split		Project Summary		Inactive Summary		Manual Summary Rollup		Finish-only		Deadline			
Milestone		Inactive Task		Manual Task		Manual Summary		External Tasks		Progress			



# **MICHIGAN SQUARE AFFORDABLE HOUSING** **REDEVELOPMENT**

---

## **APPLIANCES INSTALLATION CONTRACT 527-11 30 14**

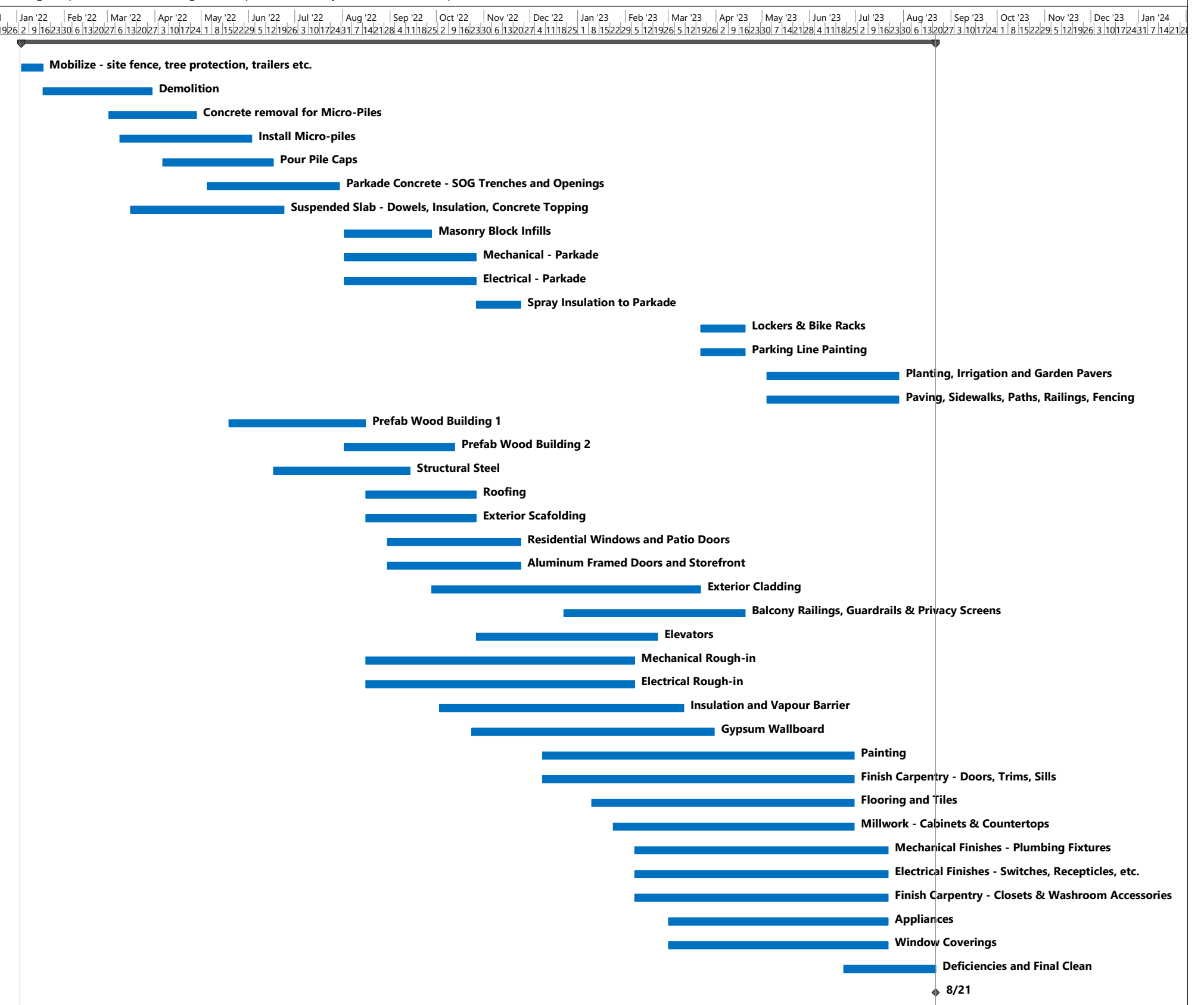
ADDENDUM #1 – September 21, 2021

This addendum is issued for amendment to the RFQ Documents and forms an integral part of the RFQ Documentation. **Trade contractors must acknowledge inclusion of this addendum on the quotation by referencing DCM Addendum #1 and the total number of 2 pages for this addendum.**

1. Refer to attached Preliminary Construction Schedule - DRAFT, as prepared by Durwest Construction Management, dated September 21, 2021, **1 page attached**. This schedule is for reference purposes only and is subject to change.

**END OF ADDENDUM #1**

ID	Task Name	Duration	Start	Finish
1	<b>Construction</b>	<b>410 days</b>	<b>Tue 1/4/22</b>	<b>Mon 8/21/23</b>
2	Mobilize - site fence, tree protection, trailers etc.	10 days	Tue 1/4/22	Mon 1/17/22
3	Demolition	50 days	Tue 1/18/22	Tue 3/29/22
4	Concrete removal for Micro-Piles	40 days	Wed 3/2/22	Wed 4/27/22
5	Install Micro-piles	60 days	Wed 3/9/22	Thu 6/2/22
6	Pour Pile Caps	50 days	Wed 4/6/22	Thu 6/16/22
7	Parkade Concrete - SOG Trenches and Openings	60 days	Thu 5/5/22	Fri 7/29/22
8	Suspended Slab - Dowels, Insulation, Concrete Topping	70 days	Wed 3/16/22	Thu 6/23/22
9	Masonry Block Infills	40 days	Tue 8/2/22	Tue 9/27/22
10	Mechanical - Parkade	60 days	Tue 8/2/22	Wed 10/26/22
11	Electrical - Parkade	60 days	Tue 8/2/22	Wed 10/26/22
12	Spray Insulation to Parkade	20 days	Thu 10/27/22	Thu 11/24/22
13	Lockers & Bike Racks	20 days	Wed 3/22/23	Wed 4/19/23
14	Parking Line Painting	20 days	Wed 3/22/23	Wed 4/19/23
15	Planting, Irrigation and Garden Pavers	60 days	Thu 5/4/23	Fri 7/28/23
16	Paving, Sidewalks, Paths, Railings, Fencing	60 days	Thu 5/4/23	Fri 7/28/23
17	Prefab Wood Building 1	60 days	Thu 5/19/22	Mon 8/15/22
18	Prefab Wood Building 2	50 days	Tue 8/2/22	Wed 10/12/22
19	Structural Steel	60 days	Fri 6/17/22	Tue 9/13/22
20	Roofing	50 days	Tue 8/16/22	Wed 10/26/22
21	Exterior Scaffolding	50 days	Tue 8/16/22	Wed 10/26/22
22	Residential Windows and Patio Doors	60 days	Tue 8/30/22	Thu 11/24/22
23	Aluminum Framed Doors and Storefront	60 days	Tue 8/30/22	Thu 11/24/22
24	Exterior Cladding	120 days	Wed 9/28/22	Tue 3/21/23
25	Balcony Railings, Guardrails & Privacy Screens	80 days	Fri 12/23/22	Wed 4/19/23
26	Elevators	80 days	Thu 10/27/22	Tue 2/21/23
27	Mechanical Rough-in	120 days	Tue 8/16/22	Mon 2/6/23
28	Electrical Rough-in	120 days	Tue 8/16/22	Mon 2/6/23
29	Insulation and Vapour Barrier	110 days	Mon 10/3/22	Fri 3/10/23
30	Gypsum Wallboard	110 days	Mon 10/24/22	Thu 3/30/23
31	Painting	140 days	Fri 12/9/22	Thu 6/29/23
32	Finish Carpentry - Doors, Trims, Sills	140 days	Fri 12/9/22	Thu 6/29/23
33	Flooring and Tiles	120 days	Tue 1/10/23	Thu 6/29/23
34	Millwork - Cabinets & Countertops	110 days	Tue 1/24/23	Thu 6/29/23
35	Mechanical Finishes - Plumbing Fixtures	115 days	Tue 2/7/23	Fri 7/21/23
36	Electrical Finishes - Switches, Recepticles, etc.	115 days	Tue 2/7/23	Fri 7/21/23
37	Finish Carpentry - Closets & Washroom Accessories	115 days	Tue 2/7/23	Fri 7/21/23
38	Appliances	100 days	Wed 3/1/23	Fri 7/21/23
39	Window Coverings	100 days	Wed 3/1/23	Fri 7/21/23
40	Deficiencies and Final Clean	40 days	Fri 6/23/23	Mon 8/21/23
41	Project Complete	0 days	Mon 8/21/23	Mon 8/21/23



Project: Michigan Square  
Date: Tue 9/21/21

Task		Summary		Inactive Milestone		Duration-only		Start-only		External Milestone		Manual Progress	
Split		Project Summary		Inactive Summary		Manual Summary Rollup		Finish-only		Deadline			
Milestone		Inactive Task		Manual Task		Manual Summary		External Tasks		Progress			



**MICHIGAN SQUARE AFFORDABLE HOUSING**  
**REDEVELOPMENT**

---

**ELEVATORS CONTRACT 527-14 20 00**

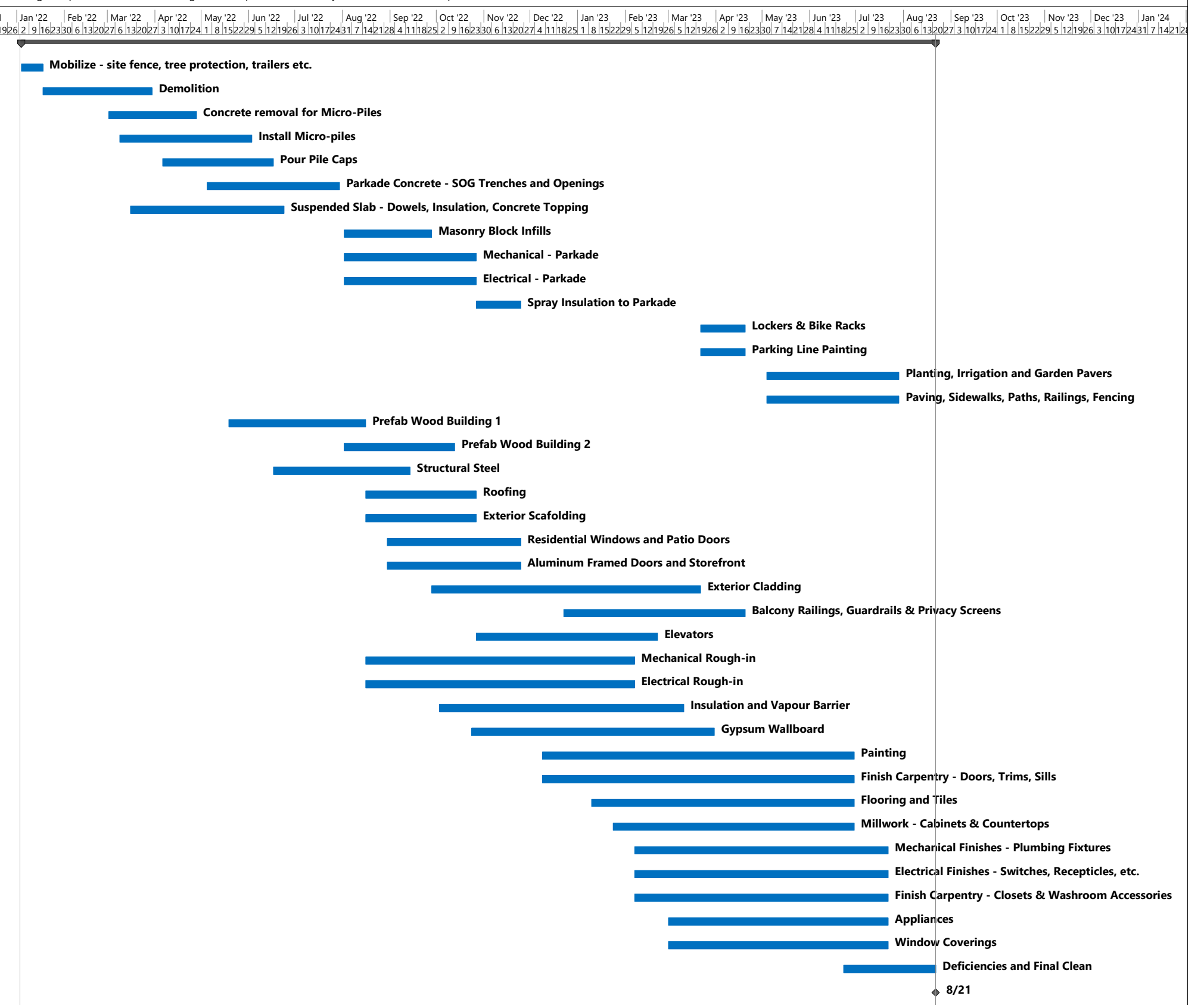
ADDENDUM #1 – September 21, 2021

This addendum is issued for amendment to the RFQ Documents and forms an integral part of the RFQ Documentation. **Trade contractors must acknowledge inclusion of this addendum on the quotation by referencing DCM Addendum #1 and the total number of 2 pages for this addendum.**

1. Refer to attached Preliminary Construction Schedule - DRAFT, as prepared by Durwest Construction Management, dated September 21, 2021, **1 page attached**. This schedule is for reference purposes only and is subject to change.

**END OF ADDENDUM #1**

ID	Task Name	Duration	Start	Finish
1	<b>Construction</b>	<b>410 days</b>	<b>Tue 1/4/22</b>	<b>Mon 8/21/23</b>
2	Mobilize - site fence, tree protection, trailers etc.	10 days	Tue 1/4/22	Mon 1/17/22
3	Demolition	50 days	Tue 1/18/22	Tue 3/29/22
4	Concrete removal for Micro-Piles	40 days	Wed 3/2/22	Wed 4/27/22
5	Install Micro-piles	60 days	Wed 3/9/22	Thu 6/2/22
6	Pour Pile Caps	50 days	Wed 4/6/22	Thu 6/16/22
7	Parkade Concrete - SOG Trenches and Openings	60 days	Thu 5/5/22	Fri 7/29/22
8	Suspended Slab - Dowels, Insulation, Concrete Topping	70 days	Wed 3/16/22	Thu 6/23/22
9	Masonry Block Infills	40 days	Tue 8/2/22	Tue 9/27/22
10	Mechanical - Parkade	60 days	Tue 8/2/22	Wed 10/26/22
11	Electrical - Parkade	60 days	Tue 8/2/22	Wed 10/26/22
12	Spray Insulation to Parkade	20 days	Thu 10/27/22	Thu 11/24/22
13	Lockers & Bike Racks	20 days	Wed 3/22/23	Wed 4/19/23
14	Parking Line Painting	20 days	Wed 3/22/23	Wed 4/19/23
15	Planting, Irrigation and Garden Pavers	60 days	Thu 5/4/23	Fri 7/28/23
16	Paving, Sidewalks, Paths, Railings, Fencing	60 days	Thu 5/4/23	Fri 7/28/23
17	Prefab Wood Building 1	60 days	Thu 5/19/22	Mon 8/15/22
18	Prefab Wood Building 2	50 days	Tue 8/2/22	Wed 10/12/22
19	Structural Steel	60 days	Fri 6/17/22	Tue 9/13/22
20	Roofing	50 days	Tue 8/16/22	Wed 10/26/22
21	Exterior Scaffolding	50 days	Tue 8/16/22	Wed 10/26/22
22	Residential Windows and Patio Doors	60 days	Tue 8/30/22	Thu 11/24/22
23	Aluminum Framed Doors and Storefront	60 days	Tue 8/30/22	Thu 11/24/22
24	Exterior Cladding	120 days	Wed 9/28/22	Tue 3/21/23
25	Balcony Railings, Guardrails & Privacy Screens	80 days	Fri 12/23/22	Wed 4/19/23
26	Elevators	80 days	Thu 10/27/22	Tue 2/21/23
27	Mechanical Rough-in	120 days	Tue 8/16/22	Mon 2/6/23
28	Electrical Rough-in	120 days	Tue 8/16/22	Mon 2/6/23
29	Insulation and Vapour Barrier	110 days	Mon 10/3/22	Fri 3/10/23
30	Gypsum Wallboard	110 days	Mon 10/24/22	Thu 3/30/23
31	Painting	140 days	Fri 12/9/22	Thu 6/29/23
32	Finish Carpentry - Doors, Trims, Sills	140 days	Fri 12/9/22	Thu 6/29/23
33	Flooring and Tiles	120 days	Tue 1/10/23	Thu 6/29/23
34	Millwork - Cabinets & Countertops	110 days	Tue 1/24/23	Thu 6/29/23
35	Mechanical Finishes - Plumbing Fixtures	115 days	Tue 2/7/23	Fri 7/21/23
36	Electrical Finishes - Switches, Recepticles, etc.	115 days	Tue 2/7/23	Fri 7/21/23
37	Finish Carpentry - Closets & Washroom Accessories	115 days	Tue 2/7/23	Fri 7/21/23
38	Appliances	100 days	Wed 3/1/23	Fri 7/21/23
39	Window Coverings	100 days	Wed 3/1/23	Fri 7/21/23
40	Deficiencies and Final Clean	40 days	Fri 6/23/23	Mon 8/21/23
41	Project Complete	0 days	Mon 8/21/23	Mon 8/21/23



Project: Michigan Square  
Date: Tue 9/21/21

Task		Summary		Inactive Milestone		Duration-only		Start-only		External Milestone		Manual Progress	
Split		Project Summary		Inactive Summary		Manual Summary Rollup		Finish-only		Deadline			
Milestone		Inactive Task		Manual Task		Manual Summary		External Tasks		Progress			

