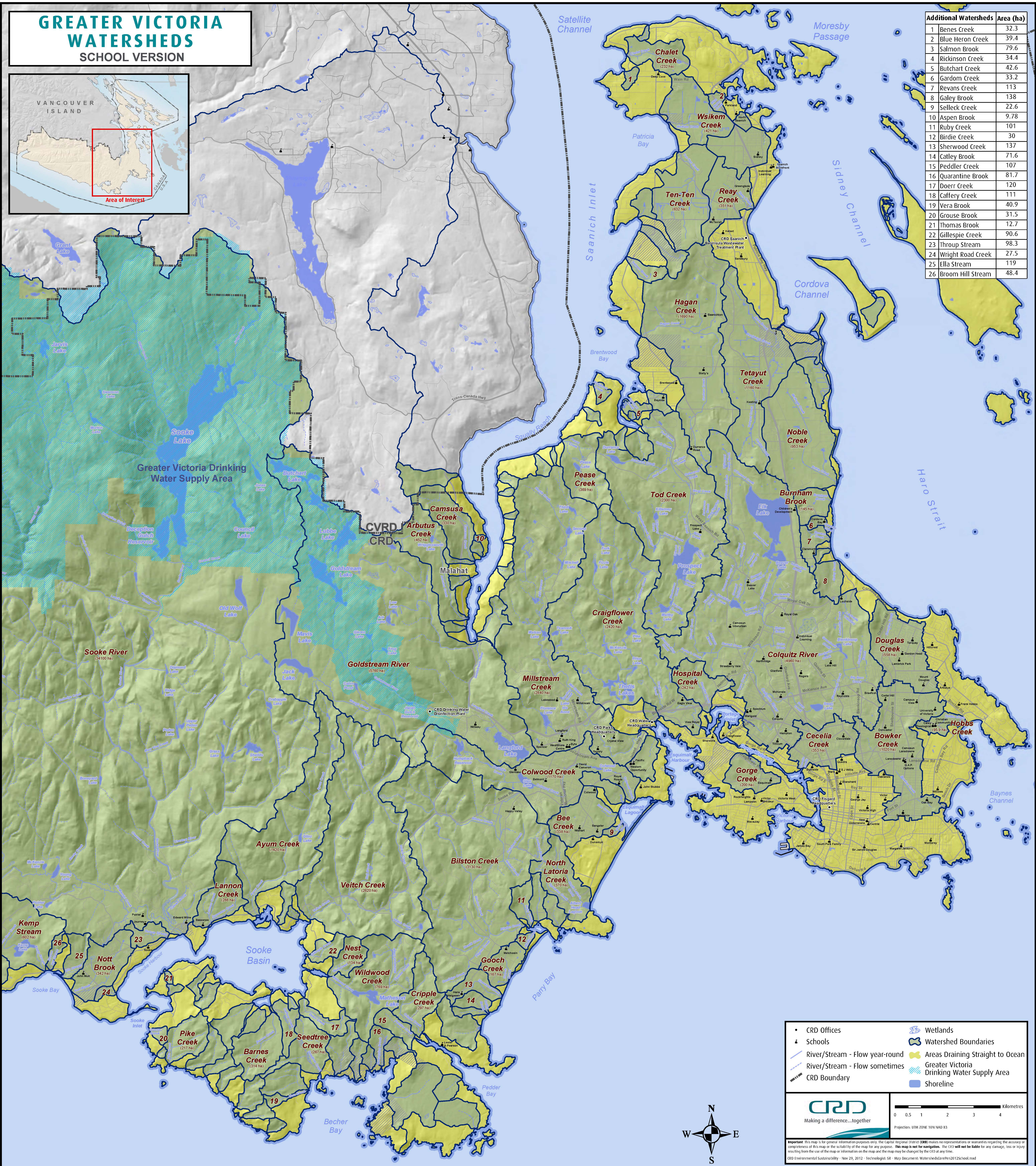


GREATER VICTORIA WATERSHEDS

SCHOOL VERSION



Additional Watersheds	Area (ha)
1 Benes Creek	32.3
2 Blue Heron Creek	39.4
3 Salmon Brook	79.6
4 Rickinson Creek	34.4
5 Butchart Creek	42.6
6 Gardom Creek	33.2
7 Revans Creek	113
8 Galey Brook	138
9 Selleck Creek	22.6
10 Aspen Brook	9.78
11 Ruby Creek	101
12 Birdie Creek	30
13 Sherwood Creek	137
14 Catley Brook	71.6
15 Peddler Creek	107
16 Quarantine Brook	81.7
17 Doerr Creek	120
18 Caffery Creek	111
19 Vera Brook	40.9
20 Grouse Brook	31.5
21 Thomas Brook	12.7
22 Gillespie Creek	90.6
23 Throup Stream	98.3
24 Wright Road Creek	27.5
25 Ella Stream	119
26 Broom Hill Stream	48.4



- CRD Offices
- ▲ Schools
- River/Stream - Flow year-round
- River/Stream - Flow sometimes
- CRD Boundary
- Wetlands
- Watershed Boundaries
- Areas Draining Straight to Ocean
- Greater Victoria Drinking Water Supply Area
- Shoreline

Projection: UTM_ZONE 10N NAD 83

Important: This map is for general information purposes only. The Capital Regional District (CRD) makes no representation or warranties regarding the accuracy or completeness of this map or the suitability of the map for any purpose. This map is not for navigation. The CRD will not be liable for any damage, loss or injury resulting from the use of the map or information on the map and the map may be changed by the CRD at any time.

CRD Environmental Sustainability - Nov 29, 2012 - Technologist: SR - Map Document: WatershedsCorePen2012school.mxd

