

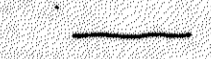


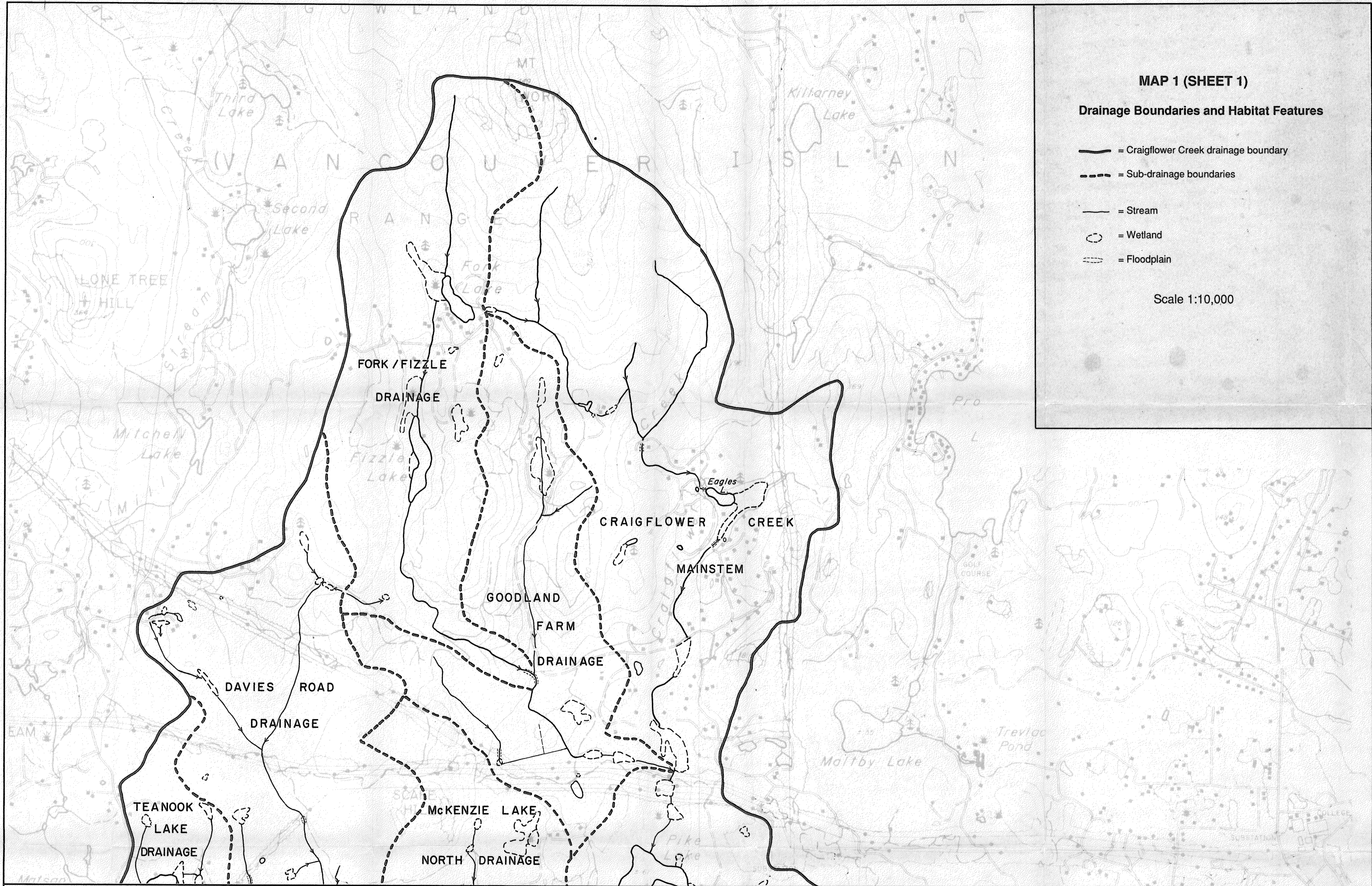


MAP 1 (SHEET 1)

Drainage Boundaries and Habitat Features

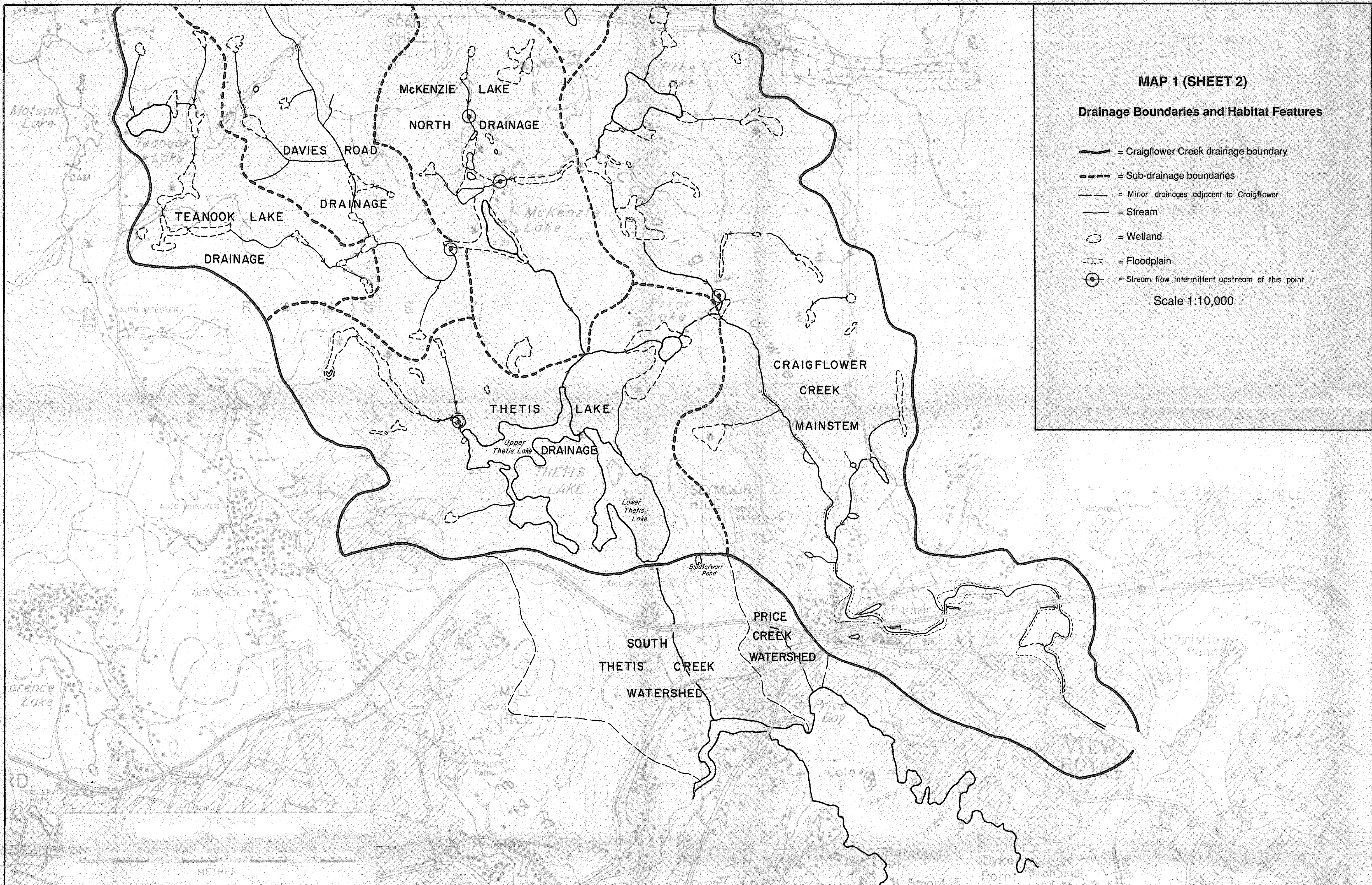
-  = Craigflower Creek drainage boundary
-  = Sub-drainage boundaries
-  = Stream
-  = Wetland
-  = Floodplain

Scale 1:10,000










CRAIGFLOWER WATERSHED STUDY

Prepared for
Capital Regional District
by
SHIP Environmental Consultants Ltd.
November, 1996



MAP 1 (SHEET 2)

Drainage Boundaries and Habitat Features

-  = Craigflower Creek drainage boundary
-  = Sub-drainage boundaries
-  = Minor drainages adjacent to Craigflower
-  = Stream
-  = Wetland
-  = Floodplain
-  = Stream flow intermittent upstream of this point

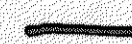




Scale 1:10,000

CRAIGFLOWER WATERSHED STUDY

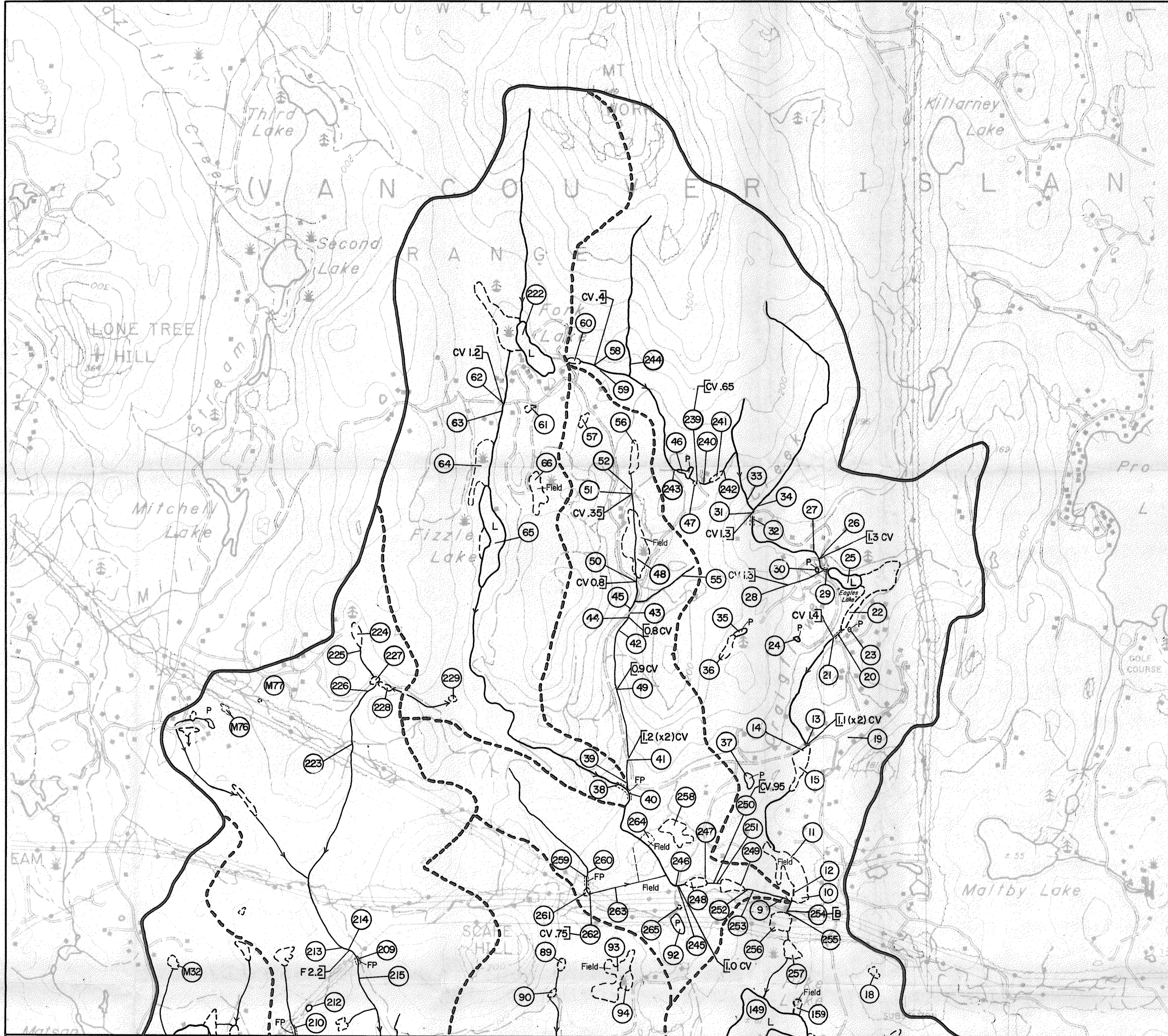
Prepared for
Capital Regional District
by
SHIP Environmental Consultants Ltd.
November, 1996

MAP 2 (SHEET 1)

Field Survey Sites and Associated Features

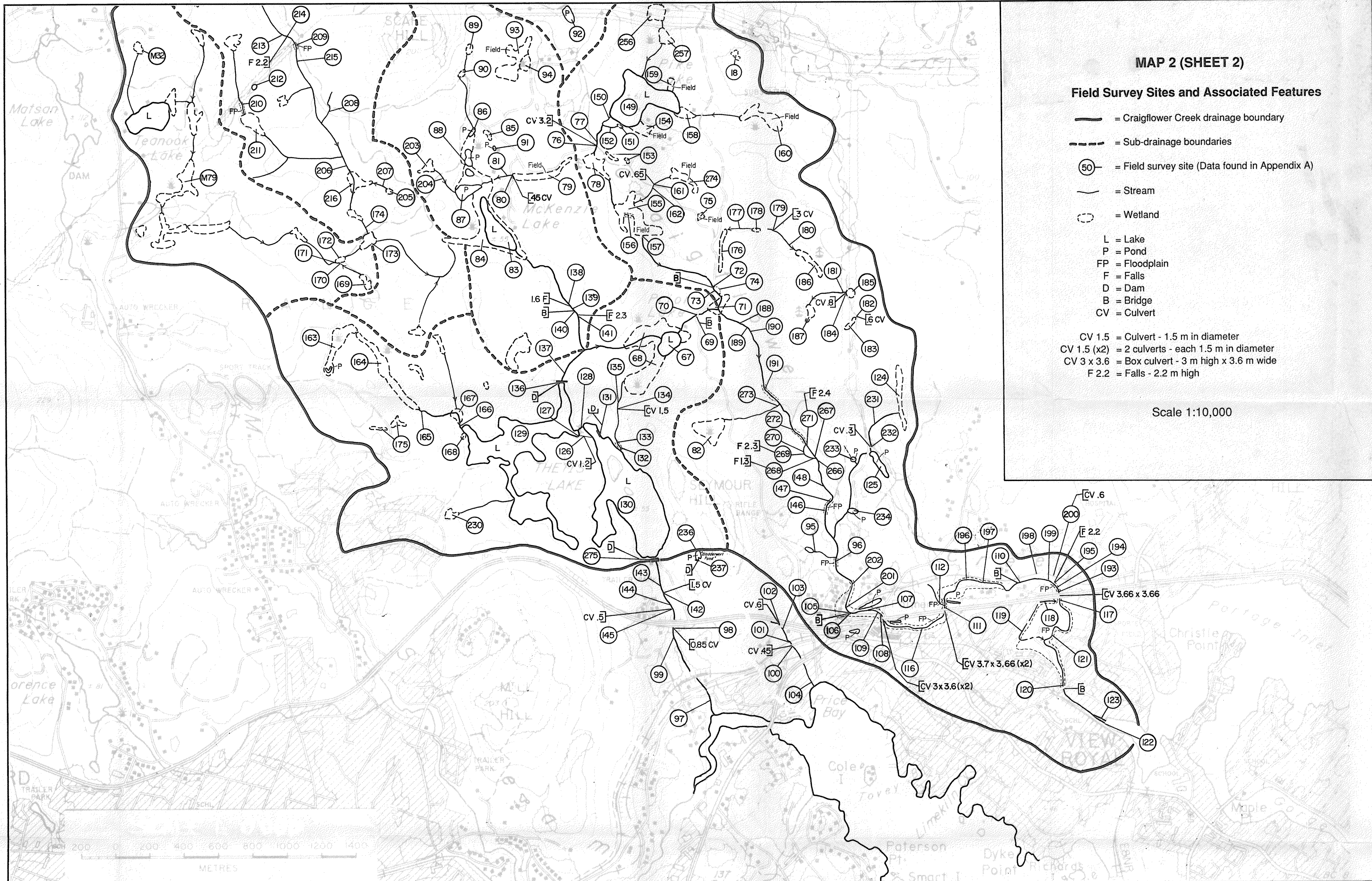
-  = Craigflower Creek drainage boundary
-  = Sub-drainage boundaries
-  = Field survey site (Data found in Appendix A)
-  = Stream
-  = Wetland
- L = Lake
- P = Pond
- FP = Floodplain
- F = Falls
- D = Dam
- B = Bridge
- CV = Culvert
- CV 1.5 = Culvert - 1.5 m in diameter
- CV 1.5 (x2) = 2 culverts - each 1.5 m in diameter
- CV 3 x 3.6 = Box culvert - 3 m high x 3.6 m wide
- F 2.2 = Falls - 2.2 m high

Scale 1:10,000



CRAIGFLOWER WATERSHED STUDY

Prepared for
Capital Regional District
by
SHIP Environmental Consultants Ltd.
November, 1996



MAP 2 (SHEET 2)

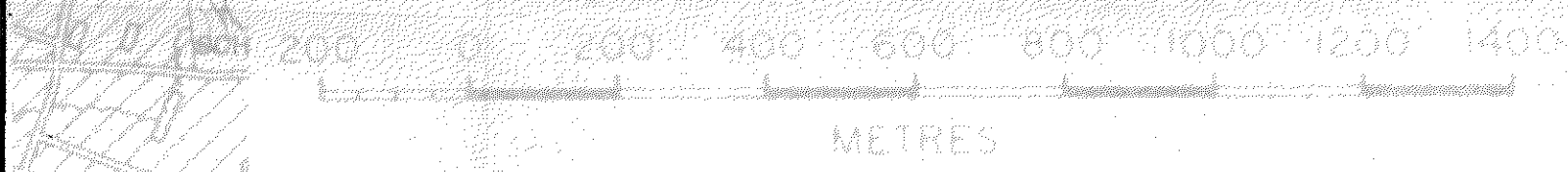
Field Survey Sites and Associated Features

- = Craigflower Creek drainage boundary
- - - = Sub-drainage boundaries
- = Field survey site (Data found in Appendix A)
- = Stream
- = Wetland

- L = Lake
- P = Pond
- FP = Floodplain
- F = Falls
- D = Dam
- B = Bridge
- CV = Culvert

- CV 1.5 = Culvert - 1.5 m in diameter
- CV 1.5 (x2) = 2 culverts - each 1.5 m in diameter
- CV 3 x 3.6 = Box culvert - 3 m high x 3.6 m wide
- F 2.2 = Falls - 2.2 m high

Scale 1:10,000



CRAIGFLOWER WATERSHED STUDY

Prepared for
 Capital Regional District
 by
 SHIP Environmental Consultants Ltd.
 November, 1996

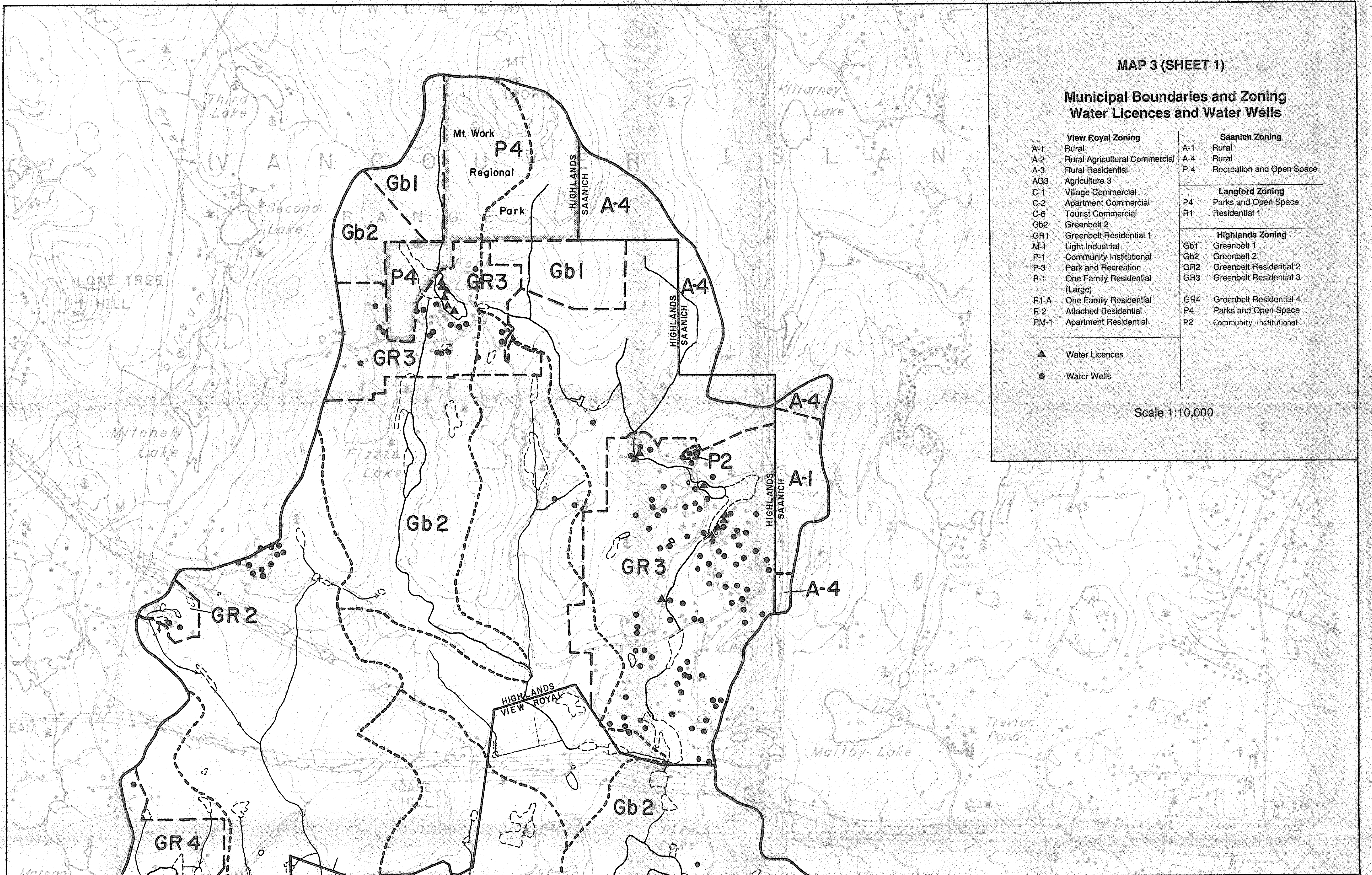
MAP 3 (SHEET 1)

Municipal Boundaries and Zoning
Water Licences and Water Wells

View Royal Zoning		Saanich Zoning	
A-1	Rural	A-1	Rural
A-2	Rural Agricultural Commercial	A-4	Rural
A-3	Rural Residential	P-4	Recreation and Open Space
AG3	Agriculture 3	Langford Zoning	
C-1	Village Commercial	P4	Parks and Open Space
C-2	Apartment Commercial	R1	Residential 1
C-6	Tourist Commercial	Highlands Zoning	
Gb2	Greenbelt 2	Gb1	Greenbelt 1
GR1	Greenbelt Residential 1	Gb2	Greenbelt 2
M-1	Light Industrial	GR2	Greenbelt Residential 2
P-1	Community Institutional	GR3	Greenbelt Residential 3
P-3	Park and Recreation	GR4	Greenbelt Residential 4
R-1	One Family Residential (Large)	P4	Parks and Open Space
R1-A	One Family Residential	P2	Community Institutional
R-2	Attached Residential		
RM-1	Apartment Residential		

- ▲ Water Licences
- Water Wells

Scale 1:10,000



CRAIGFLOWER WATERSHED STUDY

Prepared for
Capital Regional District
by
SHIP Environmental Consultants Ltd.
November, 1996

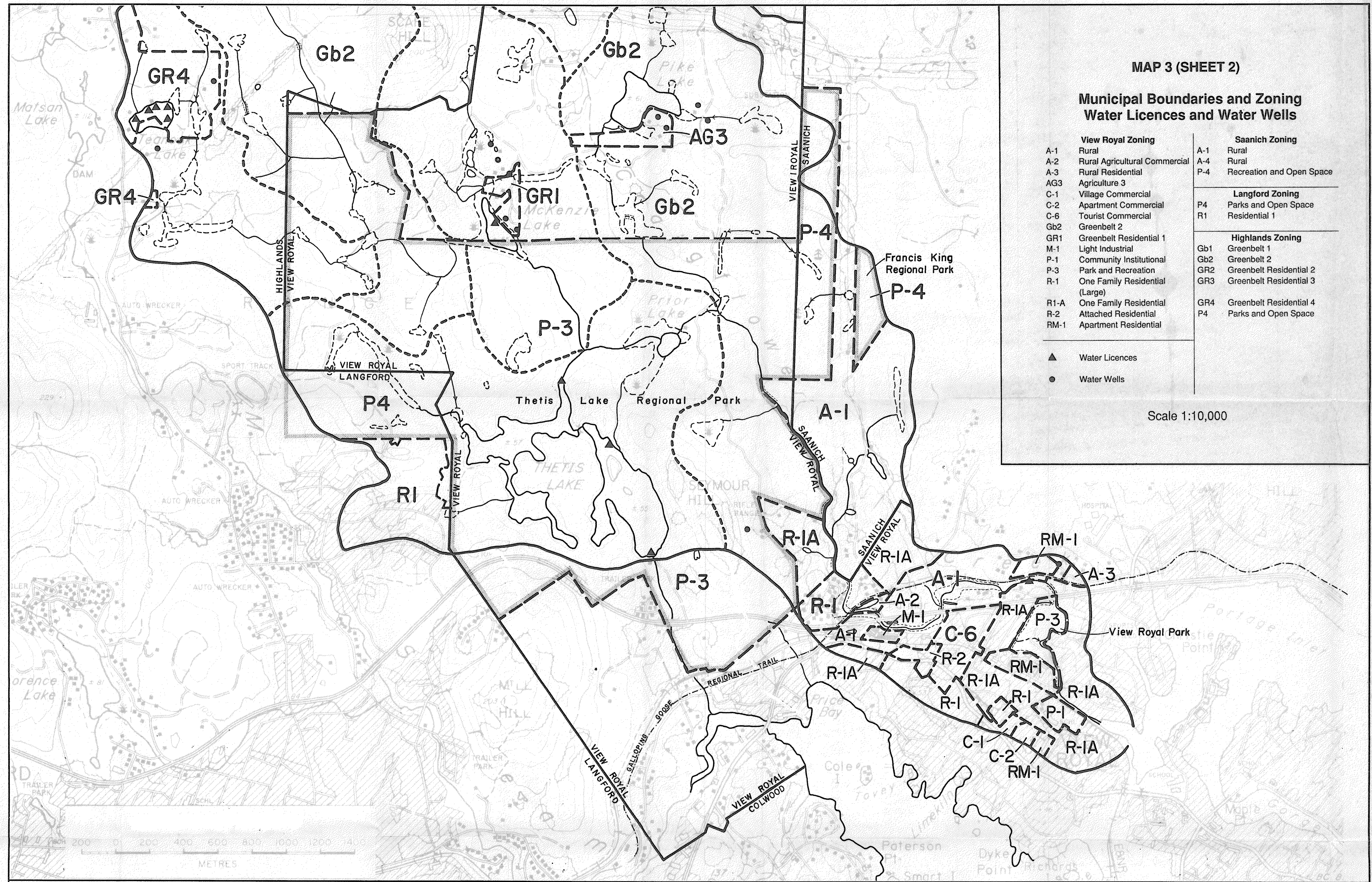
MAP 3 (SHEET 2)

Municipal Boundaries and Zoning
Water Licences and Water Wells

View Royal Zoning		Saanich Zoning	
A-1	Rural	A-1	Rural
A-2	Rural Agricultural Commercial	A-4	Rural
A-3	Rural Residential	P-4	Recreation and Open Space
AG3	Agriculture 3	Langford Zoning	
C-1	Village Commercial	P4	Parks and Open Space
C-2	Apartment Commercial	R1	Residential 1
C-6	Tourist Commercial	Highlands Zoning	
Gb2	Greenbelt 2	Gb1	Greenbelt 1
GR1	Greenbelt Residential 1	Gb2	Greenbelt 2
M-1	Light Industrial	GR2	Greenbelt Residential 2
P-1	Community Institutional	GR3	Greenbelt Residential 3
P-3	Park and Recreation	GR4	Greenbelt Residential 4
R-1	One Family Residential (Large)	P4	Parks and Open Space
R1-A	One Family Residential		
R-2	Attached Residential		
RM-1	Apartment Residential		

- ▲ Water Licences
- Water Wells

Scale 1:10,000



CRAIGFLOWER WATERSHED STUDY

Prepared for
Capital Regional District
by
SHIP Environmental Consultants Ltd.
November, 1996