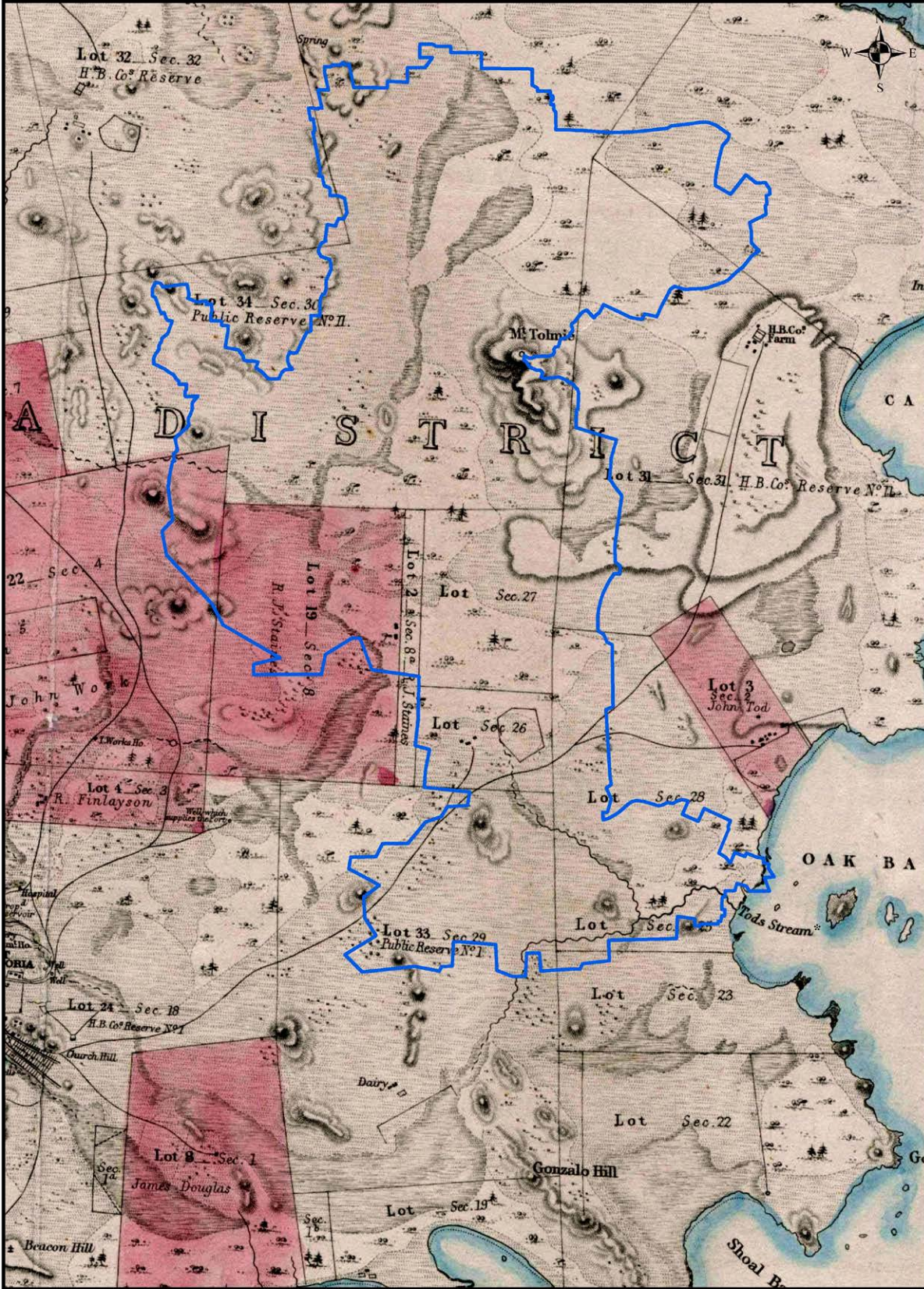


BOWKER CREEK WATERSHED AREA HISTORICAL CONTEXT - 1854



	 Projection: UTM ZONE 10N NAD 83	<p> Current Bowker Creek Watershed Area</p> <p>Base Map Shows a Portion of: Map of the Districts of Victoria and Esquimalt in Vancouver Island. Published 1854, by John Arrowsmith. 2 inches to 1 mile. The National Archives of the UK (TNA): Public Record Office (PRO), CO 700/BRITISH COLUMBIA2 *In this representation Bowker Creek is referred to as Tods Stream</p>
--	-------------------------------------	---

Report: This map is for general information purposes only. The Capital Regional District (CRD) makes no representation or warranty regarding the accuracy or completeness of this map or the suitability of the map for any purpose. This map is not for navigation. The CRD will not be liable for any damage, loss or injury resulting from the use of the map or information on the map and the map may be changed by the CRD at any time.