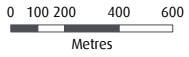


- River / Stream
 - Tunnel
 - Reservoir/ Lake
 - Wetland
 - Reservoir Depth
- 186.75m (asl)
113m (asl)

Bathymetric contours shown at 10m intervals.

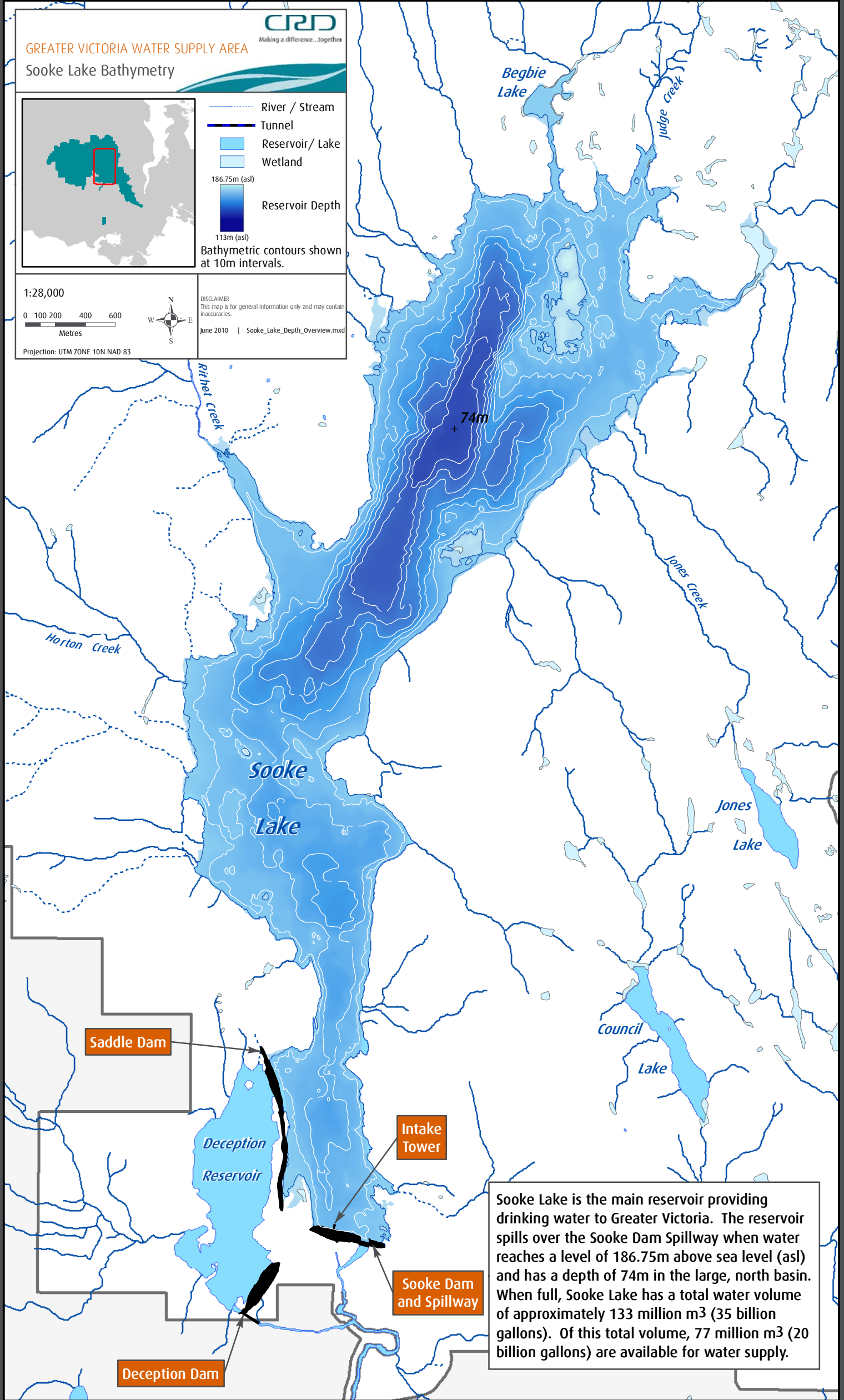
1:28,000



DISCLAIMER: This map is for general information only and may contain inaccuracies.

June 2010 | Sooke_Lake_Depth_Overview.mxd

Projection: UTM ZONE 10N NAD 83



Sooke Lake is the main reservoir providing drinking water to Greater Victoria. The reservoir spills over the Sooke Dam Spillway when water reaches a level of 186.75m above sea level (asl) and has a depth of 74m in the large, north basin. When full, Sooke Lake has a total water volume of approximately 133 million m³ (35 billion gallons). Of this total volume, 77 million m³ (20 billion gallons) are available for water supply.