

A
GREATER VICTORIA WATER SUPPLY AREA
Meteorological Stations

- Fire Weather Station
- Hydrometeorological Station
- Regional District Boundary
- River / Stream
- Tunnel
- Railway
- Leech Water Supply Area
- Sooke Water Supply Area
- Goldstream Water Supply Area
- Charters Property
- Reservoir / Lake

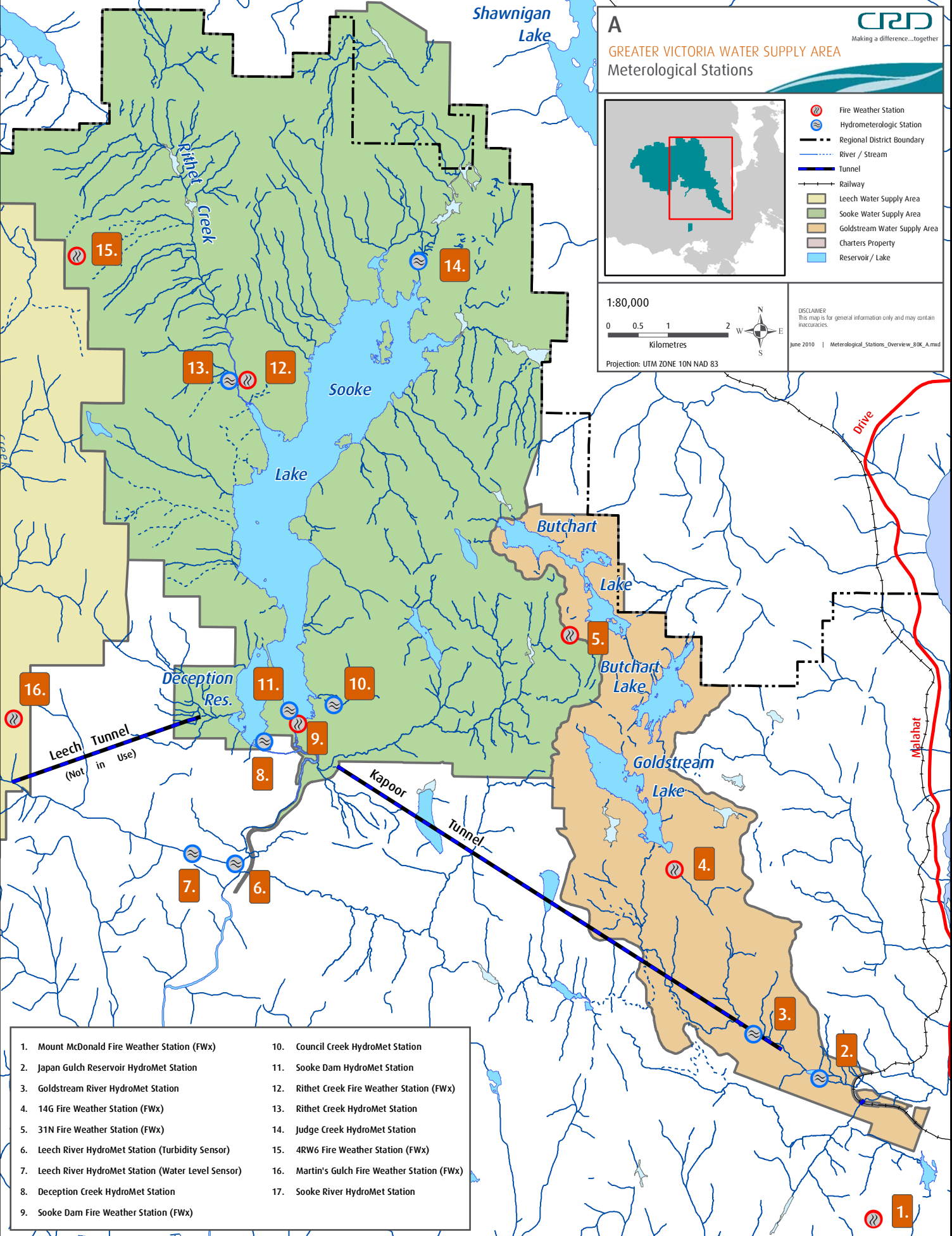
1:80,000

Kilometres

Projection: UTM ZONE 10N NAD 83

DISCLAIMER:
 This map is for general information only and may contain inaccuracies.

June 2010 | Meteorological_Stations_Overview_80K_A.mxd

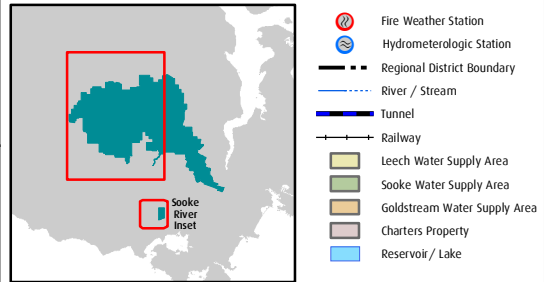


- | | |
|--|---|
| 1. Mount McDonald Fire Weather Station (FWx) | 10. Council Creek HydroMet Station |
| 2. Japan Gulch Reservoir HydroMet Station | 11. Sooke Dam HydroMet Station |
| 3. Goldstream River HydroMet Station | 12. Rithet Creek Fire Weather Station (FWx) |
| 4. 14G Fire Weather Station (FWx) | 13. Rithet Creek HydroMet Station |
| 5. 31N Fire Weather Station (FWx) | 14. Judge Creek HydroMet Station |
| 6. Leech River HydroMet Station (Turbidity Sensor) | 15. 4RW6 Fire Weather Station (FWx) |
| 7. Leech River HydroMet Station (Water Level Sensor) | 16. Martin's Gulch Fire Weather Station (FWx) |
| 8. Deception Creek HydroMet Station | 17. Sooke River HydroMet Station |
| 9. Sooke Dam Fire Weather Station (FWx) | |

1.

B

GREATER VICTORIA WATER SUPPLY AREA
Meteorological Stations



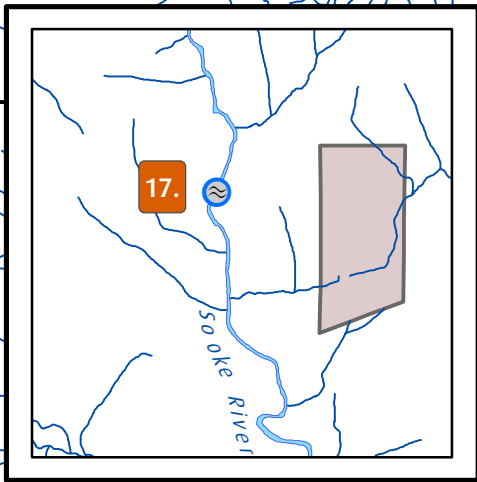
1:80,000



Projection: UTM ZONE 10N NAD 83

DISCLAIMER:
This map is for general information only and may contain inaccuracies.

June 2010 | Meteorological_Stations_Overview_80K_A.mxd



New Water Supply Lands
(To be transferred
August 2010)

- | | |
|--|---|
| 1. Mount McDonald Fire Weather Station (FWx) | 10. Council Creek HydroMet Station |
| 2. Japan Gulch Reservoir HydroMet Station | 11. Sooke Dam HydroMet Station |
| 3. Goldstream River HydroMet Station | 12. Rithet Creek Fire Weather Station (FWx) |
| 4. 14G Fire Weather Station (FWx) | 13. Rithet Creek HydroMet Station |
| 5. 31N Fire Weather Station (FWx) | 14. Judge Creek HydroMet Station |
| 6. Leech River HydroMet Station (Turbidity Sensor) | 15. 4RW6 Fire Weather Station (FWx) |
| 7. Leech River HydroMet Station (Water Level Sensor) | 16. Martin's Gulch Fire Weather Station (FWx) |
| 8. Deception Creek HydroMet Station | 17. Sooke River HydroMet Station |
| 9. Sooke Dam Fire Weather Station (FWx) | |

