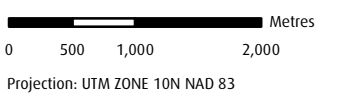


E & N Rail Trail - Humpback Connector

- Completed Trail
- - - Construction (2019/2020)
- - - Future Development

Trail Sections Open for Public Use

- 1 Jacklin Road to Savory School
- 2 Atkins Avenue to Esquimalt Road



- Galloping Goose / Lochside Regional Trails
- Regional Park
- Other Park
- E & N Rail Corridor
- Municipal / Electoral Area Boundary
- Road
- First Nation Reserve
- Lake / Ocean

Important This map is for general information purposes only. The Capital Regional District (CRD) makes no representations or warranties regarding the accuracy or completeness of this map or the suitability of the map for any purpose. **This map is not for navigation.** The CRD **will not be liable** for any damage, loss or injury resulting from the use of the map or information on the map and the map may be changed by the CRD at any time.

Capital Regional District

E & N Rail Trail - Humpback Connector