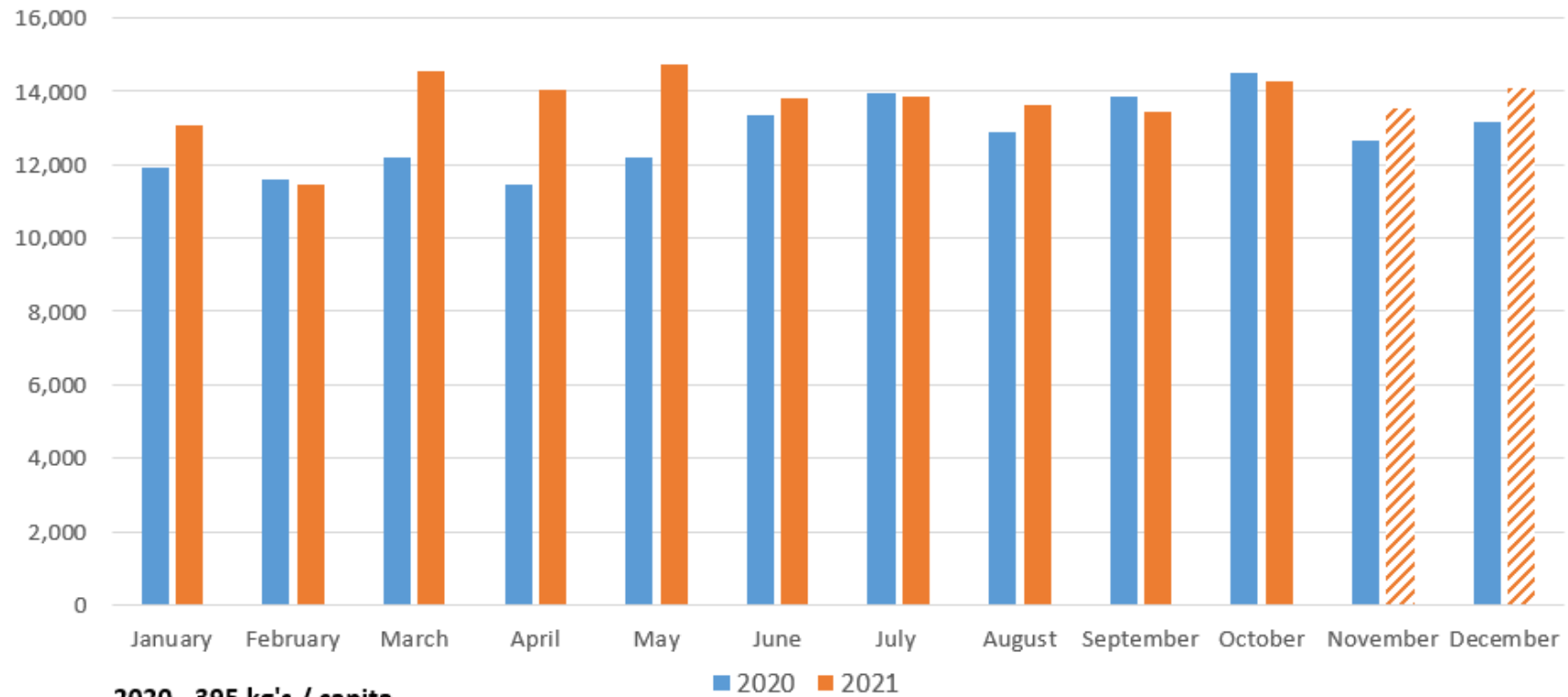


Solid Waste Advisory Committee
 November 5, 2021

Hartland Landfill Actual and Projected Monthly Refuse Tonnages



2020 - 395 kg's / capita
 2021 - 381 kg's / capita (est.)
 Population 2020 - 425,500
 Population 2021 - 431,900 (est.)

2020 - 153,700 tonnes disposed
 2021 - 164,400 tonnes disposed (est.)