



Making a difference...together

**SALT SPRING ISLAND TRANSPORTATION COMMISSION**

Notice of Meeting on **Monday, May 4, 2015 at 4:00 PM**

Salt Spring Island Public Library, 129 McPhillips Ave, Salt Spring Island, BC

Wayne McIntyre  
Ross Simpson

Kevin Bell  
Nigel Denyer

Robin Williams  
Rod Martens

Gregg Dow

---

**AGENDA**

1. **Approval of Agenda**
2. **Adoption of Minutes of March 23, 2015**
3. **Presentations/Delegations**
  - 3.1 **Brenda Guiled, President of Island Pathways, MoTI Funding**
  - 3.2 **Donald McLennan and Jean Gelwicks, Partners Creating Pathways, Bicycle Wayfinding Project**
4. **Reports-Chair and Director**
5. **Outstanding Business**
6. **New Business**
  - 6.1 **BC Transit Monthly Revenue Report**
  - 6.2 **Referral-Preliminary Subdivision Application-380 Long Harbour Road**
  - 6.3 **Route 1 Fares**
7. **Next meeting May 25, 2015 from 4 to 6 pm at the Salt Spring Island Public Library**
8. **Motion to Close Meeting in Accordance with the Community Charter Part 4, Division 3, Section 90 (1):** (e) the acquisition, disposition or expropriation of land or improvements, if the council considers that disclosure could reasonably be expected to harm the interests of the municipality
9. **Adjournment**

*Appendix A- Correspondence for information only*

---

*To ensure quorum, advise Tracey Shaver 250 537 4448 if you cannot attend.*



Making a difference...together

**Minutes of the Regular Meeting of the Salt Spring Island Transportation Commission  
Held March 23, 2015, Public Library Meeting Room, 129 McPhillips Avenue, Salt Spring  
Island, BC**

---

**DRAFT**

**Present:** **Director:** Wayne McIntyre  
**Commission Members:** Robin Williams (Chair); Kevin Bell, Ross Simpson  
(Vice-Chair), Rod Martens, Nigel Denyer  
**Staff:** Karla Campbell, Senior Manager, Keith Wahlstrom, Engineer, Erin Jory,  
Recording Secretary  
**Absent:** Gregg Dow

Chair Williams called the meeting to order at 4:04pm.

**1. Approval of Agenda**

**MOVED** by Commissioner Bell, **SECONDED** by Commissioner Simpson,  
That the agenda be approved.

**CARRIED**

**2. Adoption of Minutes of February 23, 2015**

**MOVED** by Commissioner Bell, **SECONDED** by Commissioner Simpson,  
That the Minutes of February 23, 2015 be adopted with amendments to item 4.1, bullet 1:  
replace "Salt Spring Transit" with "Potential new bus", bullet 3 add at end of item "\$1500 in  
total; and bullet 7 add "and others" after CRD.

**CARRIED**

**3. Presentations/Delegations**

**3.1. Community Harbour Seawalk and Bike Path – Islands Trust Presentation by  
Nancy Kreig**

Nancy Kreig presented seawalk possibilities for Ganges Harbour, with general  
discussion and questions from Commission members.

**3.2. 2015 Island Pathway Project – Jean Gelwicks and Richard Shead**

Jean Gelwicks advised the actual cost for the Rainbow Road – Ganges Village  
Pathway Network will be over budget and an additional \$20,000 is required to  
complete the project.

**MOVED** by Commissioner Simpson, **SECONDED** by Commissioner Denyer,  
That the Salt Spring Island Transportation Commission recommends allocating an  
additional \$20,000 for pathway project on Rainbow Road west of Atkins Road.

**CARRIED**

**3.3. Tree House Restaurant – Manson Road, Mark LeCorre**

Mr. LeCorre read from a prepared statement concerning the issues raised by the Harbour Authority on Treehouse use of the gravel path west of the restaurant. Mr. LeCorre received a trésspass notice in 2014 regarding legal liability issues. Mr. LeCorre moved tables off the gravel pathway that formed part of District Water Lot 348 in order to comply. Mr. LeCorre requested assistance from the Commission in dealing with this issue.

**4. Reports**

**4.1. Director**

- Salt Spring Island Budget was approved at the March 18, 2015 Electoral Area Services Committee meeting; will go to CRD Board for approval.
- Received an extension of recycling support for 4 years which will be supported for all participants across the CRD. 1 out 24 Board voted in favour.
- Economic Strategic Action Plan voted in and overall progress for more support for CEDC. Planning and Protection Services has theoretical support for CEDC.
- Recognition of first charging station March 23, 2015 at Hedgerow B&B who had a visitor from the US who could plug in electric vehicle. Also March has been a good year – unrelated to the US dollar, more so that Canadians can travel within Canada. Potential users of B&B's having problems with ferry schedules and overloaded ferries.
- Will send a letter to the Minister of Transportation re: BC Ferry Revenue/Tax Revenue.
- Spent some time on Fulford Inn demolition.

**4.2. Chair**

- Will be away for next meeting.
- Meeting with seniors groups – provided with Petition from Southend Seniors, as well as another group talking about transit.

Chair Williams left the meeting at 5:14pm and returned at 5:16pm.

**5. Outstanding Business**

**5.1. BC Transit Monthly Review and Ridership**

**5.2. NGTP Rainbow Road/Lower Ganges Road Project Options – Ross Simpson**

Commissioner Simpson provided a presentation for discussion purposes.

**MOVED** by Chair Williams, **SECONDED** by Commissioner Denyer,

That the Salt Spring Island Transportation Commission recommends approval of an alignment alteration of the pathway in front of School District maintenance yard by creating a marked pathway with paint striping on the asphalt, subject to the approval of the School District.

**CARRIED**  
**Bell OPPOSED**

Director McIntyre left the meeting at 6:02pm.

**6. New Business**

**6.1. 281 Beaver Point Road Subdivision Application Referral**

**MOVED** by Commissioner Simpson, **SECONDED** by Commissioner Martens,  
That the Salt Spring Island Transportation Commission agrees its interests are unaffected  
by the 281 Beaver Point Road Subdivision Application Referral.

**CARRIED**

**6.2. Islands Trust Referral – Proposal to amend the Land Use Bylaw from In2 to In2  
Variant-SS-RZ-2014.2**

**MOVED** by Commissioner Simpson, **SECONDED** by Commissioner Martens,  
That the Salt Spring Island Transportation Commission agrees its interests are unaffected  
by Islands Trust Referral Proposal to amend the Land Use Bylaw from In2 to In2 Variant-  
SS-RZ-2014.2.

**CARRIED**

**6.3. Ministry of Transportation – proposed 3 lot strata subdivision – 241 Fulford  
Ganges Road**

**MOVED** by Commissioner Bell, **SECONDED** by Commissioner Simpson,  
That the Salt Spring Island Transportation Commission recommends that only one  
entrance be constructed on the property; and there be future considerations for pathway  
projects regarding the Ministry of Transportation proposed 3 lot strata subdivision at 241  
Fulford Ganges Road.

**CARRIED**

**Martens OPPOSED**

**6.4. BC Transit – Special Event Authorization April 19, 2015 – Vancouver Bach  
Choir**

**MOVED** by Commissioner Bell, **SECONDED** by Commissioner Simpson,  
That the Salt Spring Island Transportation Commission authorizes a charter bus by the  
Vancouver Bach Choir for this event.

**CARRIED**

**7. Next Meeting April 27, 2015.**

**8. Adjournment**

The meeting was adjourned at 6:20pm.

---

**CHAIR**

---

**SENIOR MANAGER**



Making a difference...together

**RULES GOVERNING THE HEARING OF INDIVIDUALS OR DELEGATIONS  
BY THE SALT SPRING ISLAND TRANSPORTATION COMMISSION**

- Under the CRD Procedural Bylaw, the Commission may, by *majority* vote, allow an individual or a delegation to address the meeting **on the subject of an agenda item**.
- Each speaker is required to complete this form and submit it to the Salt Spring Island Transportation Commission secretary not less than two working days prior to the meeting.
- If you miss this deadline, you may still submit this form, however such requests will require *unanimous* approval.
- Each address shall be limited to five (5) minutes unless a longer period is agreed to by unanimous vote.

**Submit form to Salt Spring Island Transit and Transportation Commission**

E-mail: [saltspringtransit@crd.bc.ca](mailto:saltspringtransit@crd.bc.ca)

Fax: (250) 360-3130

Capital Regional District, P.O. Box 1000, 625 Fisgard Street, Victoria, BC V8W 2S6

I wish to address the: Salt Spring Island Transportation Commission  
 AT THE MEETING OF April 27, 201 5 at 4 pm AM/PM  
 ON AGENDA ITEM BC Ministry of Transportation & Infrastructure  
Cycling Infrastructure funding opportunity

NAME Brenda Guiled  
 ADDRESS 127 Heidi Place, Salt Spring Island

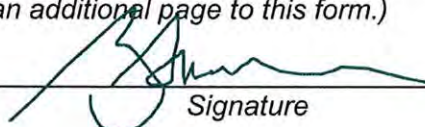
I REPRESENT Island Pathways  
(Name of Organization if applicable)  
 AS President  
(Capacity/Office)  
 TELEPHONE 250-653-4722 FAX \_\_\_\_\_  
 E-MAIL islandpathways.brenda@gmail.com

My reason(s) for appearing is (are) and the substance of my presentation is as follows:

1. introduce Island Pathways to new commissioners
2. offer Island Pathways support in acquiring MOTI Cycling Infrastructure funding to complete planned, well-vetted, nearly shelf-ready sections of the Ganges Village multi-use pathway network.

*(If more space is required, please attach an additional page to this form.)*

2015 April 16  
Date

  
Signature

## CRD Active Transportation Bicycle Wayfinding Grant Salt Spring Island Interim Project Implementation Report

### CRD Active Transportation Funding

CRD Active Transportation in Victoria awarded \$8571 in grant funding to Salt Spring on September 4, 2014 for a wayfinding signage pilot project for bike routes in the Pedestrian and Cycling Masterplan Salt Spring Edition (PCMP SSI Edition).

### PCMP SSI Edition


The PCMP Salt Spring Edition makes the following points:

- the Executive Summary identifies the wayfinding initiative as a priority project
- the signage is to “help users identify the best cycling routes to key destinations”
- “they also visually cue motorists that they are driving along a bicycle route”

This is what the PCMP says about wayfinding signage on SSI:

#### Wayfinding

Bicycle wayfinding signs help users identify the best cycling routes to key destinations. They also visually cue motorists that they are driving along a bicycle route. The PCMP Design Guidelines provide an overview of signage requirements based on TAC and the Canadian Manual on Uniform Traffic Control Devices (MUTCD-C), as well as recommendations based on best practices for sign colour, placement, frequency, and content. On Salt Spring Island, key locations for wayfinding signs and information kiosks include all ferry terminals, Ganges Village, and key decision points along recommended routes. Salt Spring Island may choose to use the wayfinding signage proposed by the PCMP or develop a unique standard. If a unique design is selected it should include elements that make it recognizable as part of the regional cycling network (see Figure 2).



*Figure 2: Wayfinding signage proposed by the PCMP*

### Technical Advisory Committee

At the request of the CRD, a group of community volunteers came together on SSI in 2012 to provide feedback on the evolution of the PCMP. TAC representation included CRD SSI, Islands Trust, Island Pathways, Velo Village, Cycling BC, a retired MoTI engineer, the SSITC and a student intern.

The TAC convened on May 6, 2014 to consider the newly-announced wayfinding program, to conduct information research and to get feedback from those previously involved in the PCMP with a view to crafting a project proposal for SSITC consideration. Potential sign locations and types were identified and a recommendation was made to the SSITC.

The SSI Transportation Commission passed a formal motion on May 20, 2014 endorsing the project recommendations of the TAC.

## Evolution of the Project

After the grant was awarded to Salt Spring, CRD SSI accepted the offer of Partners Creating Pathways (PCP), a coalition of like-minded active transportation partisans founded by Island Pathways, to implement the project under the guidance of Keith Wahlstrom, CRD SSI engineer. PCP representative Donald McLennan was appointed as volunteer Project Manager.

## Project Permits

PCP negotiated an agreement with BC Ferries for Island Pathways wayfinding map kiosks at Long Harbour Ferry Terminal and at Vesuvius Bay Ferry Terminal. BC Ferries subsequently signed a Licensing Agreement with CRD Salt Spring on January 28, 2015. The wayfinding maps are based on Island Pathways award-winning Heritage map of Salt Spring. A copy of the Licensing Agreement is available upon request.



The Ministry of Transportation & Infrastructure issued a permit for the road signage initiative on February 11, 2015 and is treating Salt Spring as a “pilot area”. A pdf copy of the MoTI permit is attached.

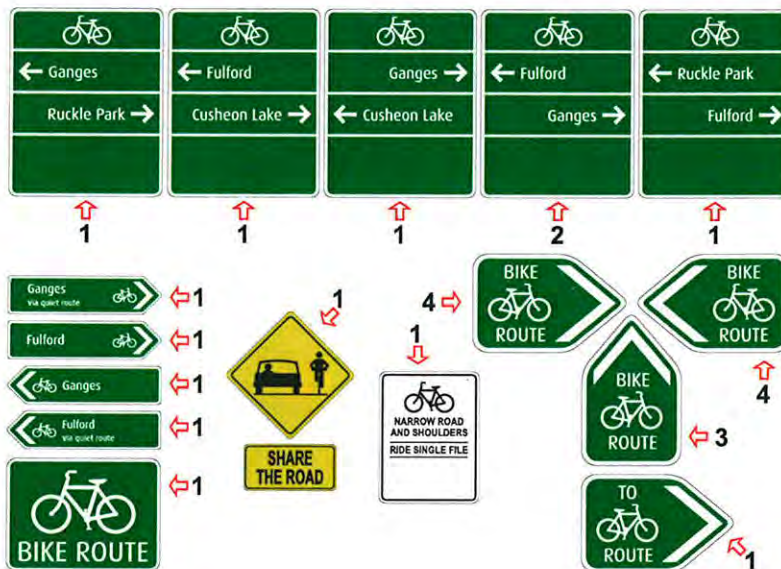
## Location of Signs

The PCMP SSI Edition provides guidance as follows:

- “on SSI, key locations for wayfinding signs and information kiosks include all ferry terminals, Ganges Village, and key decision points along recommended routes”
- five types of wayfinding signs will be installed at various locations on Salt Spring as per the attached Annex A

## Signage Design and Production

Signage types are based on guidelines in the CRD “Cycling Destination Wayfinding Guidelines” Handbook. TNT Signs on Salt Spring is producing the signs to MoTI specifications. An order was placed with TNT for the five different types of signs immediately after MoT issued a permit for the wayfinding initiative in February. On March 27, TNT delivered the first three of twenty-five signs to PCP.



## Installation of Wayfinding Road Signage

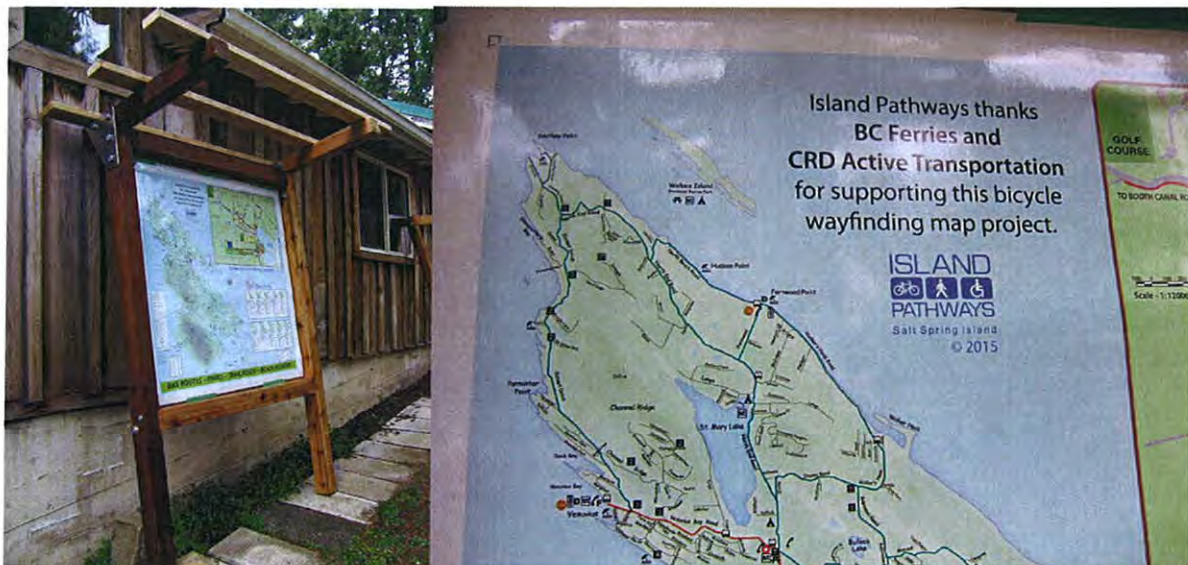
- under the guidance of the CRD SSI engineer, installation of the road signage is being handled with community volunteers from PCP in collaboration with MoTI/MainRoad based on the precedents established in the case of previous volunteer signage initiatives on Salt Spring (the Ganges Village Pathway Network and Car Stop signs)
- the first three road signs were installed on March 28



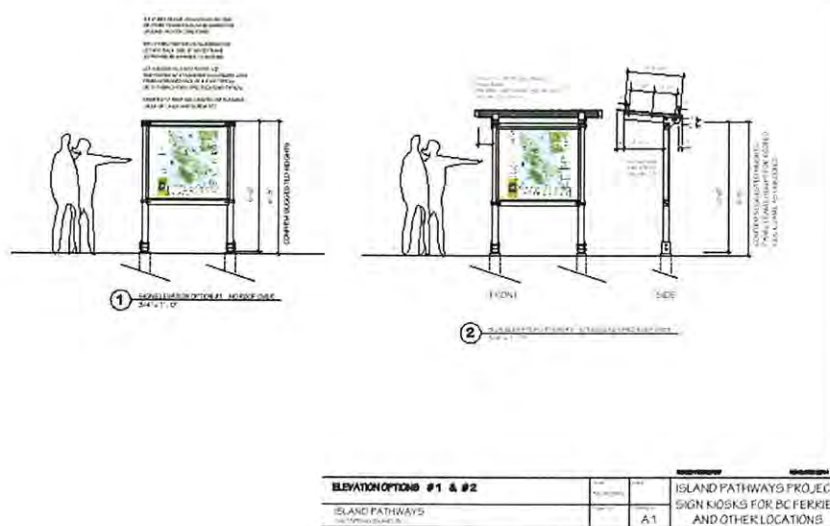
- TNT is to deliver the remaining 21 road signs the first week of April; they will be installed by mid-April
- it is worth recounting a quick story going back to when the holes for the new posts were being dug. At the corner of Stewart and Beaver Point, a couple on bikes from Oregon stopped to ask directions to Fulford. Later the same day near Beddis and Cusheon Lake, a second couple on bikes from Saskatoon stopped and asked directions to Ganges. How cool is that in terms of demonstrating the timeliness of bicycle wayfinding signs on Salt Spring? Thank you CRD Active Transportation!

## Installation of Wayfinding Map Kiosks

- the Island Pathways wayfinding map kiosks for Long Harbour and Vesuvius ferry terminals are finished to the point of installation
- maps from TNT Signs have been ordered and they should be ready the first week of April
- the kiosks will be installed with the help of a PCP volunteer work party later in April







## Grant Funding

- CRD Active Transportation grant guidelines require that funds be disbursed by March 31, 2015
- all invoices have been submitted to CRD Salt Spring to meet the March 31st deadline
- a consolidated disbursement list is attached at Annex B
- \$7942.15 of the \$8571 grant has been spent; the project is within budget
- CRD Salt Spring will seek reimbursement of GST costs which will reduce the final expenditure total slightly

## Volunteer Hours

- a detailed accounting of volunteer hours on the project follows in Annex C
- simple labour is costed at \$30/hour; professional labour is costed at \$60/hour.
- community volunteers from the Island Pathways/Partners Creating Pathways team included a professional designer (7 hours); a retired transportation engineer with forty years experience (9 hours); a mechanical engineer (1 hour); and a drainage engineer (2 hours)
- to date, community volunteers have devoted a total of 131 in-kind hours to the wayfinding project at an estimated value of \$4310
- final installation will require a further 12 man hours for the map kiosks and 18 man hours for the road signage

## Grant Contribution Recognition

- PCP has given recognition to CRD Active Transportation for the Innovative Infrastructure grant. in a number of ways:
  - media releases with quotes; copies are attached at Annex D
  - coverage in the community weekly The Driftwood
  - article on the Island Pathways website
  - article in the Island Pathways 2015 Winter Newsletter (copy mailed)
  - poster in the Island Pathways booths at the Salt Spring Fall Fair and the recent Film Festival
  - formal appreciation included in the wayfaring map at the ferry terminals

## **Words of Appreciation**

Partners Creating Pathways wishes to express its fulsome appreciation to:

- Jennifer Black, Manager, CRD Active Transportation for mentoring the project and for the grant of \$8571 to support the project
- Camrin Hillis, Terminal Manager, Swartz Bay and Southern Gulf Islands, British Columbia Ferry Services Inc. for supporting the installation of wayfinding map kiosks at Long Harbour and Vesuvius Bay Ferry Terminals
- Jordan Wagner, District Development Technician, MoTI for shepherding the permit process and for designating Salt Spring a special “pilot area”
- Keith Wahlstrom, Engineer, CRD Salt Spring for overseeing the project on Salt Spring
- Kirk Harris, PARC for assisting with sourcing component hardware and for delivering the concrete signage bases
- TNT Signs for producing the road signage and the Island Pathways heritage maps
- Jean Gelwicks and Pat Walker Graphic Design for crafting the Island Pathways wayfinding maps
- Peter Lamb for volunteer assistance with road signage installation
- professional community volunteers Phillip Van Horn and Glenn Trarup for designing the map kiosks
- retired transportation engineer R Simpson for assistance with laying out the signage network
- community volunteer Technical Advisory Committee members Brenda Guiled, John Wakefield, Torill Gillespie, Jean Gelwicks and Don Gillespie

Donald McLennan, Project Manager  
Partners Creating Pathways  
March 31, 2015

## Annex A : Wayfinding Signs and Locations

### Type A signs : Locations/Captions



**Location 1 - Fulford Ganges/Beaver Point : Fulford Ganges NB** on existing MoT directional sign  
(match width dimension of existing MoT directional sign)

Ganges  
via quiet route



**Location 2(a) - Cusheon Lake/Beddis**

- **Cusheon Lake EB** (Minimum clearance from regulatory STOP signage is 30m)

Ganges



**Location 2(b) - Cusheon Lake/Beddis**

- **Beddis EB**

Fulford



**Location 3 - Fulford Ganges/Beddis : Fulford Ganges SB** (Not too close to the existing signage school bus warning)

Fulford  
via quiet route



### Type B signs : Locations/Captions



**Location 4 - Fulford Ganges/Beaver Point : Beaver Point WB**

Destination I  
Fulford



Destination II  
Ganges



**Location 5(a) - Stewart/Beaver Point : Stewart SB**

Destination I  
Ruckle Park 

Destination II  
Fulford 

**Location 5(b) - Stewart/Beaver Point : Beaver Point WB**

Destination I  
Fulford 

Destination II  
Ganges 

**Location 5(c) - Stewart/Beaver Point : Beaver Point EB**

Destination I  
Ganges 

Destination II  
Ruckle Park 

**Location 6(a) - Stewart/Cusheon Lake : Stewart NB**

Destination I  
Ganges 

Destination II  
Cusheon Lake 

**Location 6(b) - Stewart/Cusheon Lake : Cusheon Lake WB**

Destination I  
Fulford 

Destination II  
Cusheon Lake 

**Type C signs (most with arrow added)**  
**On Existing MoT directional signs**



**Location 7 - Fulford Ganges Road/Isabella Point Road**

- FGR SB

**Location 8 - Fulford Ganges Road north of Isabella Point Road**

- FGR NB

**Location 9 - Fulford Ganges Road/Furness Road**

- FGR NB

**Location 10 - Fulford Ganges Road/Burgoyne Bay Road**

- FGR SB

**Location 11 - Fulford Ganges Road/Cushion Lake Road**

- FGR SB

**Location 12 - Beddis/Fulford Ganges**

- Beddis WB

**Location 13 - LGR/UGR**

- LGR at T junction

**Location 14(a) and (b) - Central (UGR/LGR/North End Rd/Vesuvius Bay Rd)**

- LGR NB
- Vesuvius Bay Rd EB

**Location 15 - UGR/Robinson**

- UGR EB

**Location 16(a) and (b) - UGR/Long Harbour Road**

- UGR NB
- Long Harbour WB

**Location 17 - Vesuvius Bay Road/Sunset Drive**

- Vesuvius Bay Road SB

**Type D Sign**



**Location 19 - Fulford Ganges/Beddis exiting Ganges Village**

- Fulford Ganges SB on existing MoT directional sign

**Type E sign**



**Location 24 - Fulford Ganges Road/Drake Road exiting Ganges Village**

- Fulford Ganges SB

## Annex B : Grant Funding: Consolidated List of Disbursements

<b>Consolidated List of Expenses</b>		
<b>Slegg Building Materials</b>	kiosk hardware	\$50.24
	kiosk hardware	44.28
	kiosk hardware	33.53
	post saddles	73.43
	kiosk hardware	23.07
	scraper	23.51
<b>Windsor Plywood</b>	auger & kiosk hardware	59.18
	screws & auger	20.6
	kiosk hardware	12.05
	post saddles, cedar etc	182.5
	invoice 041303 01-28-15	50
	corrugated roofing	69.97
<b>Tran Sign</b>	sleeves, posts, rivets	1109.41
<b>Pat Walker Graphic Design</b>	Island Pathways kiosk maps	1691.89
	Island Pathways GVPN	713.33
<b>Matthew A Kerrigan</b>	galvanized flashing	78.75
	cutting corrugated roofing	105
<b>TNT Signs</b>	wayfinding highway signage	3494.17
<b>Island Marine Construction</b>	aluminum brackets for kiosks	195.8
<b>TOTAL</b>		<b>\$7,942.15</b>

## **Annex C : SUMMARY OF VOLUNTEER LABOUR**

**PROJECT:** Bicycle Wayfinding Pilot Project

**DATE:** May 2014 - March 2015

**RATES:** Simple labour is costed at \$30/hour; professional labour is costed at \$60/hour.

### **A. VOLUNTEER GENERAL LABOUR**

- September 15 - kiosk map design - JG 4 hours @ \$30 total \$120
- September 24 - kiosk map design - JG 2 hours @ \$30 total \$60
- October 7 - kiosk map design - JG 2 hours @ \$30 total \$60
- January 11, 2015 - kiosk map design - JG 2 hours @ \$30 total \$60
- January 26 - kiosk map design - JG 1 hour @ \$30 total \$30
- Feb 1, 2015 - kiosk fabrication - DMcL 3 hours @ \$30 total \$90
- Feb 2 - kiosk fabrication - DMcL 4 hours @ \$30 total \$120
- Feb 3 - kiosk fabrication - DMcL 3 hours @ \$30 total \$90
- Feb 5 - kiosk fabrication - DMcL 3 hours @ \$30 total \$90
- Feb 6 - kiosk fabrication - DMcL 3 hours @ \$30 total \$90
- Feb 11 - kiosk fabrication - DMcL 3 hours @ \$30 total \$90
- Feb 12 - kiosk fabrication - DMcL 2 hours @ \$30 total \$60
- Feb 14 - kiosk fabrication - DMcL 1 hours @ \$30 total \$30
- Feb 17 - kiosk fabrication - DMcL 3 hours @ \$30 total \$90
- March 12 - signage installation - DMcL 2 hours @ \$30 total \$60
- March 13 - signage installation - DMcL 7 hours @ \$30 total \$210
- March 28 - signage installation - DMcL and Peter Lamb 2 hours @ \$30 total \$120
- March 30 - deliver concrete bases with PARC - DMcL 1 hour @ \$30 total \$30

### **B. PROJECT MANAGEMENT ( Donald McLennan)**

- July 8, 2014 - consultation BC Ferries - DMcL and Jean Gelwicks (JG) 1 hour @ \$30 total \$60
- July 10, 2014 - network to be signed - DMcL 6 hours @ \$30 total \$180
- July 14, 2014 - grant application - DMcL 2 hours @ 30 total \$60
- July 24, 2014 - consultation with BC Ferries - DMcL 1 hour @ \$30 total \$30
- October 1, 2014 - meeting with TNT Signs - DMcL and JG 1 hour @ \$30 total \$60
- October 8, 2014 - meeting with MoT - DMcL and JG @ 1.5 hours @ \$30 total \$90
- October 31, 2014 - design consultation - DMcL and JG 1 hour @ \$30 total \$60
- December 22, 2014 - photos of sign locations at MoT request and draft consolidated illustrated list of sign locations and types - DMcL 6 hours @ \$30 total \$180
- January 5, 2015 - stake sign locations at MoT request - DMcL 3 hours @\$30 total \$90
- January 5-6 - photograph new sign locations - DMcL 3 hours @\$30 total \$90
- January 6 - draft MoT permit application and accompanying documentation - DMcL 3 hours @ \$30 total \$90
- January 9 - review project details with CRD engineer - DMcL 1 hour @\$30 total \$30
- January 23 - meeting with TNT Signs - DMcL and JG 1 hour @ \$30 total \$60
- February 16 - meeting with TNT Signs to order signage - DMcL 1 hour @ \$30 total \$30
- February 18 - draft media release - DMcL 2 hours @ \$30 total \$60
- February 20 - meeting with The Driftwood newspaper - DMcL and JG 1 hour @ \$30 total \$60
- February 24 - distribute media release - DMcL 1 hour @ \$30 total \$30
- February 25 - design work on Island Pathways bicycle wayfinding map for BC Ferries kiosks - DMcL and JG 1 hour @ \$30 total \$60
- March 15 - start drafting Final Project Report - DMcL 2 hours @ \$30 total \$60



- March 18 - drafting Final Project Report - DMcL 1 hours @ \$30 total \$30
- March 21 - draft consolidated listing of project expenses - DMcL 2 hours @ \$30 total \$60
- March 30 - drafting Final Project Report - DMcL 2 hours @\$30 total \$60

#### **C. PROJECT DESIGN AND ENGINEERING**

- July 10, 2014 - network to be signed - volunteer Transportation engineer Ross Simpson 6 hours @ \$60 total \$360
- October 31, 2014 - design consultation, volunteer designer Phillip Van Horn 1 hr @ \$60 total \$60
- November 10, 2014 - production of kiosk sketch designs at BC Ferries request - Phillip Van Horn 5 hours @ \$60 total \$300
- January 22, 2015 - revision of kiosk design sketches - Phillip Van Horn, designer and Glenn Trarup, PEng - 2 persons 1 hour @ \$60 total \$120

#### **D. COMMUNITY TECHNICAL ADVISORY COMMITTEE MEETINGS**

- May 6, 2014 - TAC meeting - 3 persons (DMcL, T Gillespie, B Guiled) 2 hours @ \$30 sub-total \$180 plus 2 persons (D Gillespie, R Simpson) 2 hours @ \$60 sub-total \$240 Total \$420
- June 24, 2014 - TAC meeting - 3 persons (DMcL, J Gelwicks, B Guiled) 1 hour @ \$30 sub-total \$90 plus 1 person (R Simpson) 1 hour @ \$60 sub-total \$60 Total \$150

**TOTAL - 131 in-kind hours valued at \$4310**

## Annex D : GRANT CONTRIBUTION RECOGNITION

The Driftwood May 28, 2014

6 | WEDNESDAY, MAY 28, 2014

# OPINIC

EDITORIAL

## Share the Road

**T**he increasing number of cyclists on the island's roads has been evident since the weather turned for the better earlier this spring. Bike commuters have tuned up their rides and visitors chasing that bucolic island cycle tour have started to roll off the ferries.

Any doubt that cycling season had yet to arrive was quickly deflated on Monday morning, as nearly 100 cyclists registered for Bike to Work Week 2014. For anyone who missed out, registration continues until the seventh and final day on Sunday.

### THE ISSUE:

Bike to Work Week

### WE SAY:

Keep your heads up

unaware of their surroundings. Cyclists feel motorists have developed a revved up sense of entitlement when it comes to their asphalt turf.

Though the same debate rages endlessly in rural communities and urban centres across the country, Salt Springers are showing that compromise is possible.

Infrastructure upgrades conducted over the past five years have improved the plight of cyclists and motorists. Plans for further changes point to even more of the same. Events like 2012's Velo Village and Bike to Work Week offer drivers of four- and two-wheeled vehicles alike the chance to shift their driving habits.

It's not too hard; keep your head up, slow down and drive or ride defensively.

Salt Spring certainly has quite a ways to go before it becomes a cycling paradise — including the insurmountable topographic challenges — but we're definitely on our way.

As more cyclist take to the roads this summer, let's hope a stronger cycling culture can guide the behaviors of all motorist, thereby encouraging more people to choose a healthy, cost-effective and environmentally friendly commute.

Nearly 41 per cent of respondents to a recent question of the week said they don't support BTWW, but Salt Spring has long hosted a love-hate relationship between motorists and cyclist. Drivers argue that many cyclists are hard to see and often appear

## TRANSPORTATION

# Salt Spring nets CRD Active Transportation funding

CRD grants benefit cyclists and pedestrians

BY ELIZABETH NOLAN  
DRIFTWOOD STAFF

Cyclists and pedestrians on Salt Spring will soon notice some improvements to their daily commutes thanks to two grants from the Capital Regional District's new Active Transportation department.

The Salt Spring Transportation Commission passed a resolution at its May 20 meeting to collaborate with the CRD body to

create signage for cyclists with funding from Active Transportation.

Grants of between \$2,000 and \$3,900 will be provided to participating municipalities and rural areas within the CRD. The signs are intended to "help users identify the best cycling routes to key destinations" as well as "visually cue motorists that they are driving along a bicycle route," according to background material.

SSITC chair Donald McLennan observed that Salt Spring was eligible to receive the funding thanks to having created a pedes-

trian and cyclist master plan to supplement the regional plan that covered the CRD's Vancouver Island communities. The island will receive an equal portion of funding to the other communities, including Victoria.

"We're part of the family now. It's great," McLennan said.

"This is more than enough to launch the initiative on Salt Spring without dipping into our budget at all."

Installing the wayfinding signage was among recommendations made in the pedestrian and cycling master plan to improve

cycling infrastructure on the island. The document maps out the potential locations for such signs.

CRD Active Transportation has also provided funds to benefit Island Pathways, the community organization devoted to building safe paths for pedestrians where sidewalks don't exist in Ganges. The group recently received \$75,000 of innovative Infrastructure Funding under the CRD's Pedestrian and Cycling Master Plan implementation pilot project and the Federal Gas Tax Agreement.

SSITC's Island Pathways

liaison Nigel Denyer told commission members Partners Creating Pathways can now move ahead with its two planned projects for 2014, both of which run along Upper Ganges Road. One pathway will go from Long Harbour Road to an existing pathway at Churchill Road. The second will run from Harbour's End Marine to the intersection with Lower Ganges Road.

Community fundraising, along with additional grants from Mid-Island Co-op and other groups, will help pay for the projects.

In other SSITC news,

commissioners passed a resolution to accept tenders from two island contractors to complete work on a bus shelter planned for Lower Ganges Road near Country Grocer, as recommended by vice-chair Robin Williams. Belavance Welding will construct the steel structure and Kapa Kai Glass will provide the window for a design by island artist Matt Brain. Brain's concept based on the moon snail was previously selected by a judging panel.

Work on the bus shelter is expected to be finished by August.

## The Driftwood March 4, 2015

## TRANSPORTATION

# Cycle-friendly signage approved

Partners Creating Pathways makes use of active transportation funds

BY ELIZABETH NOLAN  
DRIFTWOOD STAFF

Volunteer-led coalition Partners Creating Pathways is getting prepared to make use of a grant from the Capital Regional District to improve the cycling situation on Salt Spring.

Grants for cycling wayfinding signs were released to communities within the CRD last spring through its new Active Transportation department. The initiative meets one of five priorities established in Salt Spring's Pedestrian and Cycling Master Plan.

Members of the master plan's technical advisory committee have since been working with the CRD and the Ministry of Transportation and Infrastructure to finalize design elements and the locations for signs to be installed.

"It's going to make a big difference, I think, in signifying that we're bicycle-friendly," said PCP's Jean Gelwicks. "We want to attract green tourism. We can't change the topography at all, but we can help them find their way around."

Five different types of signs will help cyclists find the best route to destinations, as well as pointing

out hazards like narrow lanes and the need to ride single file (which is the law).

"A lot of this is about education about sharing the road," said Donald McLennan, a PCP member and participant in the master plan's original advisory committee. "It will improve safety for cyclists, and it will improve safety for motorists, because it provides visual cues that bicycles will be on the road."

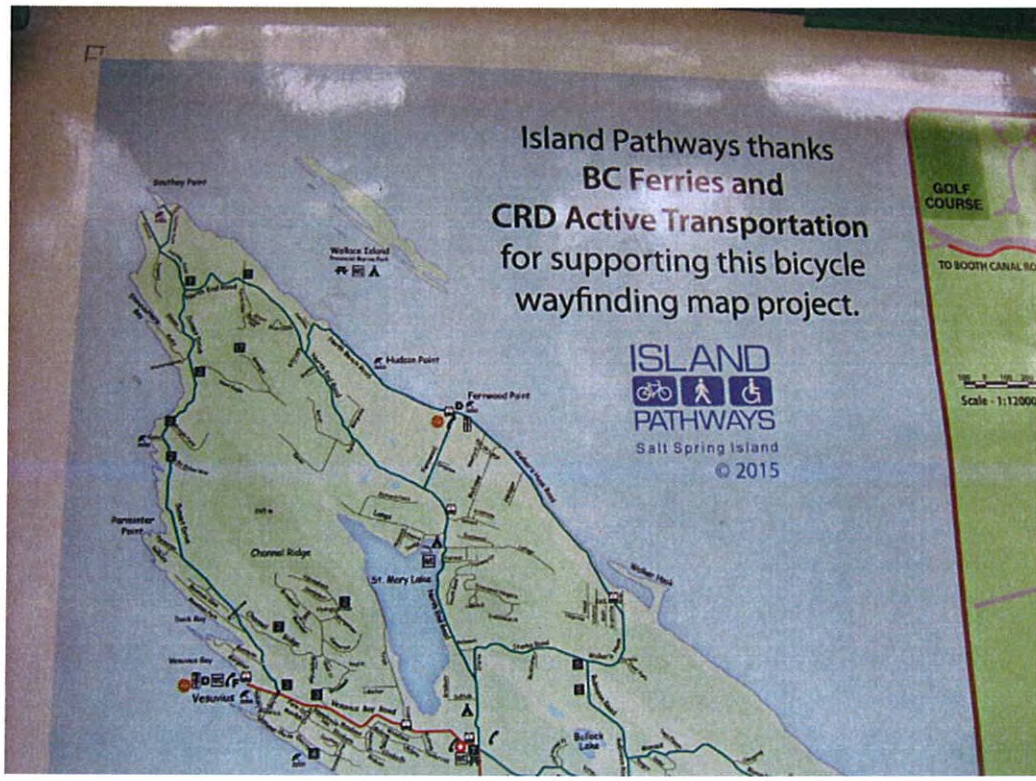
Committee members established 28 potential locations for signs, which were approved by MoTI without amendments. The installation permit was approved last week.

"In other areas within the CRD, municipalities are putting in the wayfinding signs. This is all volunteer-driven," McLennan said, adding Salt Spring has become a pilot area for MoTI partnerships of this kind. Precedence exists in the car stop program.

PCP will also be putting in two kiosks with updated Island Pathways maps at the Vesuvius and Long Harbour ferry terminals, working with BC Ferries' terminal operations manager Camrin Hillis to secure approval. The kiosks were designed by Philip Van Horne and built by McLennan.

All installations will be completed by the end of March as per grant requirements.

Island Pathways thanks  
BC Ferries and  
CRD Active Transportation  
for supporting this bicycle  
wayfinding map project.



GOLF COURSE  
TO BOOTH CANAL ROAD  
Scale - 1:12500

**Salt Spring Island Community Transit**  
**Monthly Revenue Report**

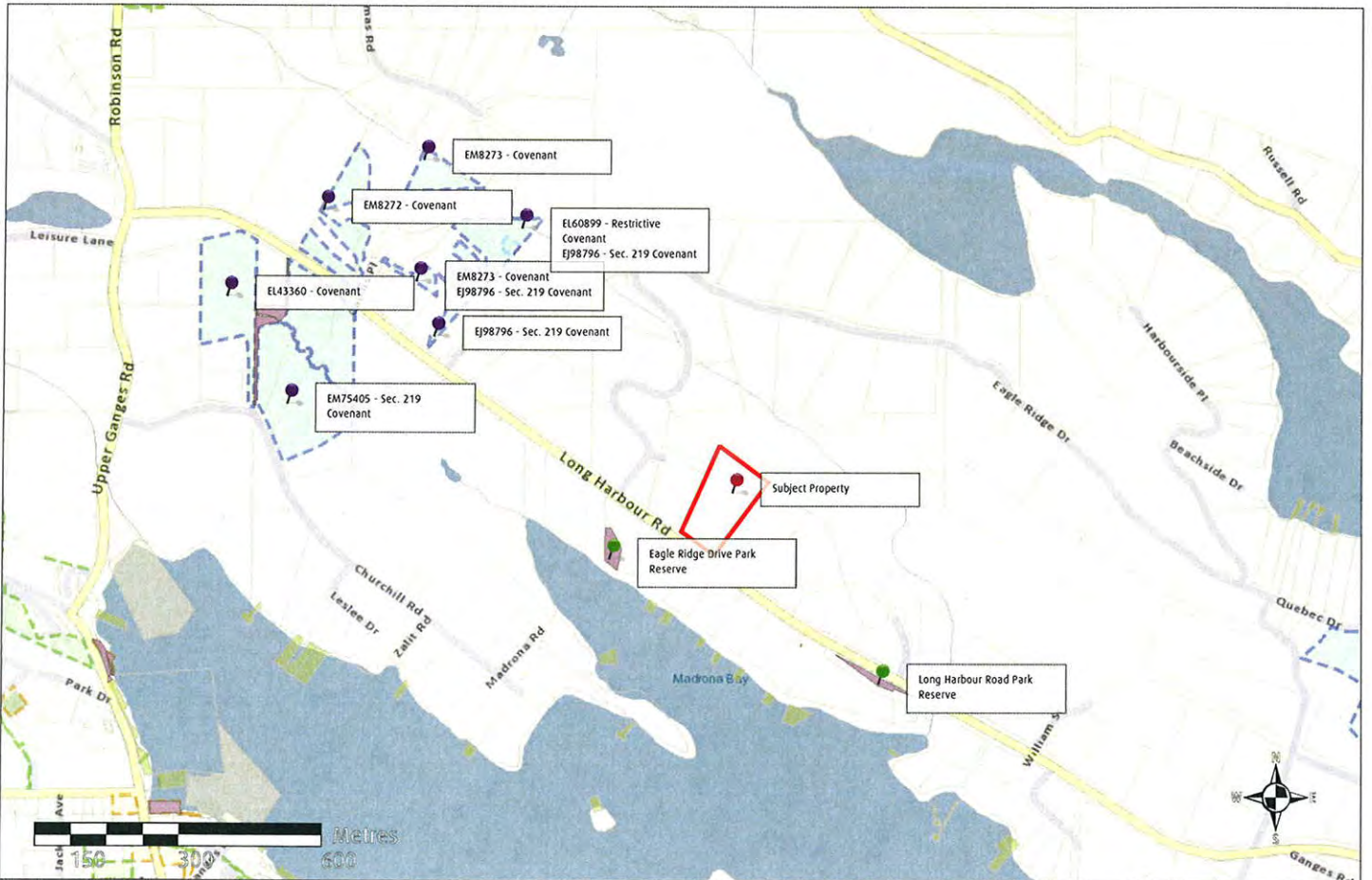


Making a difference...together

Total Vendor Sales	Jan-2015	Feb-2015	Mar-2015	Apr-2015	May-2015	Jun-2015	Jul-2015	Aug-2015	Sep-2015	Oct-2015	Nov-2015	Dec-2015	Total YTD
Monthly Passes - Adult	\$ 800	\$ 900	\$ 650	\$ -	\$ -	\$ -	\$ -	\$ -	\$ -	\$ -	\$ -	\$ -	\$ 2,350
- Concession	240	240	240	-	-	-	-	-	-	-	-	-	720
Day Passes	45	110	30	-	-	-	-	-	-	-	-	-	185
Ticket Sheets *	2,045	1,904	1,600	-	-	-	-	-	-	-	-	-	5,549
<b>Prepaid Fare Tickets</b>													
Collected from fareboxes *	2,066	2,255	2,131	-	-	-	-	-	-	-	-	-	6,451
<b>Farebox Cash Proceeds</b>													
	8,508	8,757	-	-	-	-	-	-	-	-	-	-	17,265
<b>BC Bus Pass Program Grant</b>													
	1,805	1,776	-	-	-	-	-	-	-	-	-	-	3,581
<b>Monthly Revenue</b>	<b>\$ 11,658</b>	<b>\$ 14,067</b>	<b>\$ 4,827</b>	<b>\$ -</b>	<b>\$ -</b>	<b>\$ -</b>	<b>\$ -</b>	<b>\$ -</b>	<b>\$ -</b>	<b>\$ -</b>	<b>\$ -</b>	<b>\$ -</b>	<b>\$ 30,551</b>
<b>Cumulative Totals</b>													
YTD Revenue	11,658	14,067	4,827	-	-	-	-	-	-	-	-	-	-
Unearned Revenue *	(20)	(351)	(531)	-	-	-	-	-	-	-	-	-	-
Less 2% Commission	(63)	(63)	(50)	-	-	-	-	-	-	-	-	-	-
Other Adjustments	98	(130)	-	-	-	-	-	-	-	-	-	-	-
<b>Reconciliation to GL</b>	<b>11,673</b>	<b>13,523</b>	<b>4,245</b>	<b>-</b>	<b>-</b>	<b>-</b>	<b>-</b>	<b>-</b>	<b>-</b>	<b>-</b>	<b>-</b>	<b>-</b>	<b>-</b>

\* Unearned Revenue is the difference between Prepaid Fare Tickets sold and Prepaid Fare Tickets used by riders (collected from fareboxes).

Revenue Comparisons	Jan	Feb	Mar	Apr	May	Jun	Jul	Aug	Sep	Oct	Nov	Dec	Total
2014 Monthly Revenue	12,995	11,734	10,005	16,435	16,433	16,515	21,145	21,918	19,953	12,450	13,153	15,851	188,586
2013 Monthly Revenue	9,687	12,821	10,005	12,384	15,284	17,046	16,926	21,918	15,366	15,962	12,136	13,560	173,094
2012 Monthly Revenue	9,578	8,662	14,540	10,240	14,945	21,766	7,030	21,926	15,374	12,785	12,868	11,650	161,365
2011 Monthly Revenue	4,899	5,540	6,822	6,043	7,221	10,116	10,954	15,731	11,024	8,650	7,912	9,737	104,648
2010 Monthly Revenue	5,640	5,344	7,523	6,646	8,103	10,651	11,070	10,318	8,719	5,387	5,957	6,724	92,083
2009 Monthly Revenue	6,424	5,993	7,480	6,829	7,678	8,246	11,571	10,284	7,781	7,812	5,131	6,939	92,169
2008 Monthly Revenue	1,942	3,734	4,074	4,635	5,871	6,493	9,318	10,228	8,612	7,192	5,895	8,810	76,803



**Important**

This map is for general information purposes only. The Capital Regional District (CRD) makes no representations or warranties regarding the accuracy or completeness of this map or the suitability of the map for any purpose. This map is not for navigation. The CRD will not be liable for any damage, loss or injury resulting from the use of the map or information on the map and the map may be changed by the CRD at any time.

Printed Wed, Mar 25, 2015

**CRD Interests**

**380 Long Harbour Rd - Subdivision Application**

Intramax 2.0  
 Capital Regional District  
 gis@crd.bc.ca  
 http://www.crd.bc.ca

CRD  
 Capital Regional District

March 3, 2015

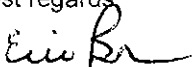
Ministry of Transportation and Infrastructure  
Nanaimo

Re – PLA Application for 380 Long Harbour Road, Salt Spring Island

Please find enclosed my application, as agent for Tsalix Investments Inc., for a 2 lot subdivision of 380 Long Harbour Road on Salt Spring.

Please find also enclosed a USB memory key with the required PDF file of the plan.

Best regards



Eric Booth  
109 Frazier Road  
Salt Spring Island, BC  
V8K 2B5

250-653-9533  
[ericbooth@shaw.ca](mailto:ericbooth@shaw.ca)

RECEIVED  
MAR 06 2015



PRELIMINARY SUBDIVISION APPLICATION

Submit this application to the Ministry of Transportation and Infrastructure District Office in your area.

A. PROPOSAL This is an application for preliminary layout approval for all properties involved

Form with fields: Applicant File Number (380-SUB), Ministry File Number, Subdivision Type (Conventional checked), Full Legal Description (Parcel Identifier: 001-243-764, Lot B, Section 3, Range 5 East, North Salt Spring Island, Cowichan District, Plan 30586), Full Civic Address (380 Long Harbour Road, Salt Spring Island, BC), Property Location (1.2 Kilometres West from GANGES, Local Gov't ISLANDS TRUST), Surrounding Land Use (North: Agricultural, South: Residential, East: Residential, West: Residential), Proposed Sewage Disposal (Septic Tank checked), Proposed Water Supply (Well checked).

B. APPLICATION INFORMATION Incomplete applications will not be accepted

Required items include:

- Subdivision application form.
The Preliminary Subdivision Application fee. Please make cheques payable to the Minister of Finance. (see page 2)
An authorization letter from the owner(s) if someone else is applying on the owner's behalf. (Permission to Act as an Agent H1275)
A copy of BC Assessment Authority Property Assessment Notice showing property tax classification.
All new lots MAY require a sewage report—please contact your local Transportation office for clarification.
One copy of the current State of Title Certificate so that property encumbrances can be checked.
Copies of any covenants, easements, rights-of-way or other charges registered against the title. These are available through the Land Title Office.
A copy of Contaminated Sites Profile form or Contaminated Sites declaration statement, duly completed and signed. MA
Original copy and a .PDF file of a scaleable sketch plan of proposed layout with metric dimensions.

Properly engineered drawings will be required for final approval. The sketch must contain:

- the date it was drawn
the scale
north arrow
legal description of the property being subdivided, and its adjacent properties
outline of the subdivision in heavy black line
all proposed lots, remainders, parks, rights-of-way, easements and roads showing metric dimensions and areas
any existing property lines or roads proposed to be removed, closed or relocated
all steep banks or slopes exceeding 2 m high and all slopes of 25% or greater, within or adjacent to the proposal area
location of existing buildings and structures, wells and sewage disposal fields on the property, as well as adjacent properties within 30 m of property boundaries
location of any onsite water sources to be developed (wells, surface)
approximate location of all existing and proposed utility services
existing access roads and other roads and trails on the property (state names of roads)
location of all water courses (seasonal or otherwise) and water bodies

Include these items as well, where applicable

- A copy of the Provincial Agricultural Land Commission application (if located within ALR). While a developer can apply for subdivision approval before he or she receives permission to proceed from the Agricultural Land Commission or the local government if it has been delegated the authority, the Provincial Approving Officer can only give approval if the property has cleared the Land Commission process in the meantime.
One copy of any test required by the Regional Health Authority.
A Development Permit and plan where applicable.



C. SUBDIVISION APPLICATION FEES			Make cheques payable to the Minister of Finance	PAYABLE UPON (see below)
1. Preliminary Subdivision Application	\$350.00	Per lot or shared interest, including remainders, to a maximum of \$70,000		Application
2. Final Conventional Plan Exam	\$50.00	Per examination		Final Subdivision Plan Submission
	\$100.00	Per lot, including remainders, on the final plan		
3. Final Strata Plan Examination	\$100.00	Per examination		
	\$100.00	Per lot, including remainders, on the final plan		
4. Other Strata Fees	\$100.00	To examine Form P for any phased development		Application
	\$100.00	Approval (Form Q) for each phase of a phased building strata plan		Application for phase approval

Note: These fees may change without notice or amendment on this form. There may be other provincial and local government fees associated with your subdivision. To find out more, contact the local government in which the land is located, or contact the Islands Trust if located on the Gulf Islands.

**D. FURTHER INFORMATION AND COMMENTS** (Attach a separate sheet if more space is required)

THIS SUBDIVISION COMPLIES WITH MINIMUM AVERAGE AND MINIMUM AREAS UNDER ISLANDS TRUST BYLAW 355, SECTION 9. A 10% ROAD FRONTAGE VARIANCE WILL BE REQUIRED.

**E. OWNER(S)/APPLICANT INFORMATION**

Property Owner(s) Full Name(s)		Home Telephone
TSALIX INVESTMENTS INC., INC.NO. 682929		250-537-0999
Address		Business Telephone
101 WILLOW LANE, SALT SPRING ISLAND, BC, V8K 2M1		
E-Mail		Fax
wk@tsalix.com		
Agent Full Name		Home Telephone
ERIC BOOTH		250-653-9533
Address		Business Telephone
109 FRAZIER ROAD, SALT SPRING ISLAND, BC, V8K 2B5		250-653-9533
E-Mail		Fax
ericbooth@shaw.ca		

I certify that all the information about and on all plans and other attachments is true, correct and complete.

I understand that this submission constitutes a preliminary application only.

No approvals are implied prior to receipt of written preliminary approval from the Ministry of Transportation and Infrastructure.

Applicant/Agent Signature

*Eric Booth*

Date (yyyy/mm/dd)

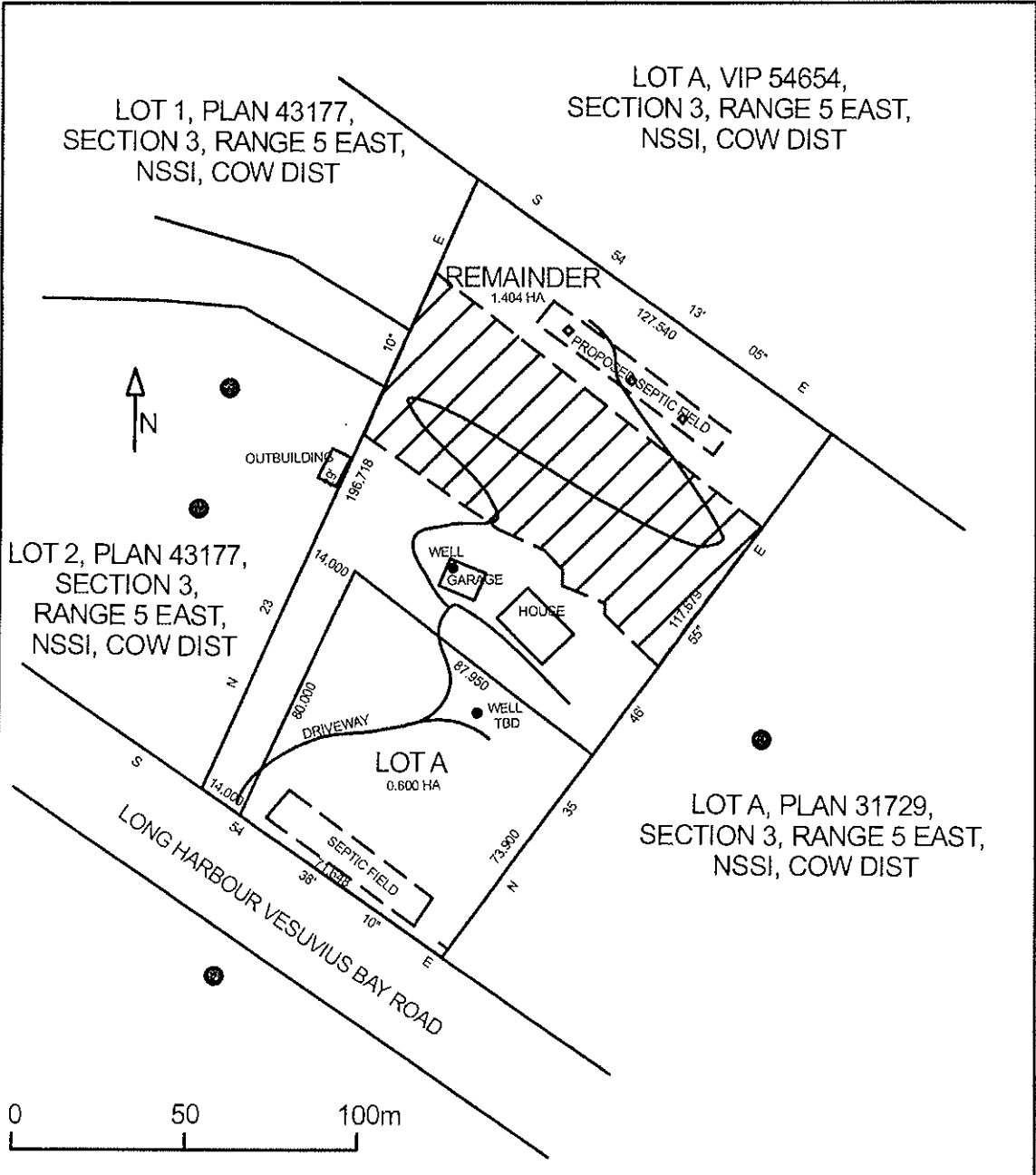
~~2015/03/05~~ MARCH 3, 2015

**COLLECTION INFORMATION**

The personal information on this form is collected under the authority of the Land Title Act. The information collected will be used to process your preliminary subdivision application, and it may be necessary for the ministry to provide this information to other agencies involved in the review and approval process. If you have any questions about the collection, use and disclosure of this information, contact District Development Technician at the nearest Ministry of Transportation and Infrastructure Office.

The information in this application may be subject to disclosure under the Freedom of Information and Privacy Act.


Further information can be found at <http://www.gov.bc.ca/citz/iao/foi/submit/general/>



Proposed Subdivision of Lot B, Section 3, Range 5 East, North Salt Spring Island,  
Cowichan District, Plan 30586

AREA OVER 25% SLOPE	ADJACENT WELLS OVER 30m	DATE DRAWN - DEC. 30, 2014
---------------------	-------------------------	----------------------------

## Appendix A: Application for Subdivision

<b>Owner Information</b>	Name Of Owner: (Please Print) <b>TSALIX INVESTMENTS INC. INC NO. 682929</b>	Phone: # <b>250-537-0999</b>
	Mailing Address: <b>101 WILLOW LANE, SALT SPRING ISLAND, B.C. V8K 2M1</b>	
<b>Applicant Information</b> (if different from above)	Name Of Applicant (Surveyor/Agent) As Above: <input type="checkbox"/> or: <b>ERIC BOOTH</b>	Phone: # <b>250-653-9533</b>
	Mailing Address: <b>109 FRAZIER RD. SALT SPRING ISLAND, B.C. V8K 2B5</b>	
<b>Property Information</b>	Legal Description Of Property: <b>LOT B, SECTION 3, RANGE 5 EAST, NORTH SALT SPRING ISLAND,</b>	
	Street Address/General Location: <b>300 LONG HARBOUR ROAD COWICHAN DISTRICT, PLAN 30586</b>	
<b>Site Information</b>	A plot plan and site assessment information form must be submitted with this application. Are all existing dwellings and sewage disposal systems indicated on the subdivision plan? <input checked="" type="checkbox"/> YES <input type="checkbox"/> NO	
<b>Number of Proposed Lots</b>	Number of lots proposed (including the remainder): <u>2</u>	
<b>Water Information</b>	Proposed domestic water supply: <input checked="" type="checkbox"/> Individual wells <input type="checkbox"/> Connection to an existing community water system. Name of system: _____ <input type="checkbox"/> Water system to be constructed, if yes, contact Regional Public Health Engineer for more information <input type="checkbox"/> Other (explain): _____	
<b>Zoning</b>	Zoning classification: <u>RESIDENTIAL 7</u> Number of dwellings permitted per lot: <u>2</u> Other development permitted: _____ Is a zoning change proposed: <u>NO</u>	
<b>Restrictive Covenants</b>	Are there any restrictive covenants/easements on any of the proposed lots, which could affect the design or location of a sewerage system? <input type="checkbox"/> Yes <input checked="" type="checkbox"/> No If Yes, please explain: _____	
<b>Signature</b>	The information on this application and other information provided by me in support of this application are accurate and true to the best of my knowledge. <input type="checkbox"/> Owner <input checked="" type="checkbox"/> Applicant or Agent  <div style="display: flex; justify-content: space-between;"> <div style="text-align: center;">               Signature           </div> <div style="text-align: center;"> <b>ERIC BOOTH</b>              Print Name           </div> <div style="text-align: center;"> <b>Dec 2014</b>              Date           </div> </div>	

- Attach the Site Assessment Information form (Appendix B) to this application.
- See Sections D through F (pages 8-16) for a list of site assessment requirements. Incomplete applications will not be processed.

## Appendix B: Site Assessment

### Site Assessment Information

Site Information	Lot Number <u>A</u>		Lot Number <u>B</u> <u>Amundson</u>		Soil Texture
Lot Size (ha)	0.6		1.4		
Overall Lot Slope (%)	< 15%		10-25%		
Lot Dimension (m)	71 x 73		127 x 117		
COVENANT INFO	PRIMARY	RESERVE	PRIMARY	RESERVE	
Slope Within Covenant Area (%)	< 5%	< 5%	< 15%	< 15%	
Sewage Discharge Area (m <sup>2</sup> )	535		535		
Sewage Discharge Area Dimensions (m)	33 x 171 ~		27 x 210 ~		
DEPTH OF NATIVE MINERAL SOIL	PRIMARY	RESERVE	PRIMARY	RESERVE	
Observation Hole #1	4 36"	4 36"	4 36"	4 36"	
#2	5 36"	5 36"	4 36"	4 36"	
PERCOLATION TEST RESULTS	PRIMARY	RESERVE	PRIMARY	RESERVE	
Test Hole	4	5	4	4	

Date(s) of Observations/Tests: <u>Dec. 30, 2014</u>
Test Performed by: <u>ERIC BOOTH</u>
Signature of Applicant or Agent or Qualified Professional: <u><i>Eric Booth</i></u>
Date: <u>Dec. 30, 2014</u>



**Overview Map**

**Legend**

(1:20,000) Water - Rivers, C etc.

FCODE

- Canal
- Dam
- Dam - Beaver
- Ditch
- Falls
- Flume
- Rapids
- River or Stream - Definite
- River or Stream - Dry
- River or Stream - Indefinite
- River or Stream - Left Bank
- River or Stream - Right Bank

0 0.50 0.99 km

1: 24,455

**Copyright/Disclaimer**

The material contained in this web site is owned by the Government of British Columbia and protected by copyright law. It may not be reproduced or redistributed without the prior written permission of the Province of British Columbia. To request permission to reproduce all or part of the material on this web site please complete the Copyright Permission Request Form which can be accessed through the Copyright Information Page.  
 CAUTION: Maps obtained using this site are not designed to assist in navigation. These maps may be generalised and may not reflect current conditions. Uncharted hazards may exist. DO NOT USE THESE MAPS FOR NAVIGATIONAL PURPOSES.

Datum: NAD83  
 Projection: NAD\_1983\_BC\_Environment\_Albers

**Key Map of British Columbia**



**TITLE SEARCH PRINT**

Declared Value \$ 5390

2015-03-03, 10:48:20

Requestor: Sarah Nugent

**\*\*CURRENT INFORMATION ONLY - NO CANCELLED INFORMATION SHOWN\*\***

<b>Land Title District</b>	VICTORIA
Land Title Office	VICTORIA
<b>Title Number</b>	FB258927
From Title Number	EW74947
<b>Application Received</b>	2009-04-14
<b>Application Entered</b>	2009-04-20
<b>Registered Owner in Fee Simple</b>	
Registered Owner/Mailing Address:	TSALIX INVESTMENTS INC., INC.NO. 682929 101 WILLOW LANE SALT SPRING ISLAND, BC V1X 2M1
<b>Taxation Authority</b>	CAPITAL ASSESSMENT AREA
<b>Description of Land</b>	
Parcel Identifier:	001-243-764
Legal Description:	LOT B, SECTION 3, RANGE 5 EAST, NORTH SALT SPRING ISLAND, COWICHAN DISTRICT, PLAN 30586
<b>Legal Notations</b>	NONE
<b>Charges, Liens and Interests</b>	
Nature:	UNDERSURFACE RIGHTS
Registration Number:	180821G
Registration Date and Time:	1954-10-05 09:30
Registered Owner:	JOEL BROADWELL
Remarks:	AN UNDIVIDED 1/2 INTEREST INTER ALIA CB 94.64.9939B DD 25477
<b>Duplicate Indefeasible Title</b>	NONE OUTSTANDING
<b>Transfers</b>	NONE
<b>Pending Applications</b>	NONE

# Fares

Fare Products	Where to Buy
---------------	--------------

TYPE	FARE	NOTES
ADULT		
CASH FARE	\$2.25	Drivers do not carry change
10 TICKETS	\$20.25	
DAY PASS	\$5.00	
MONTHLY PASS	\$50.00	
SENIOR (65+)		
CASH FARE	\$2.25	Drivers do not carry change
10 TICKETS	\$20.25	
DAY PASS	\$5.00	
MONTHLY PASS	\$40.00	
STUDENT (K TO 12)		
CASH FARE	\$2.25	Drivers do not carry change
10 TICKETS	\$20.25	
DAY PASS	\$5.00	
MONTHLY PASS	\$40.00	
CHILD (4 AND UNDER)		
Free when accompanied by an adult		

[Monthly Pass \(/servlet/Satellite/salt-spring-island/fares/monthly-passes-flash\)](/servlet/Satellite/salt-spring-island/fares/monthly-passes-flash)



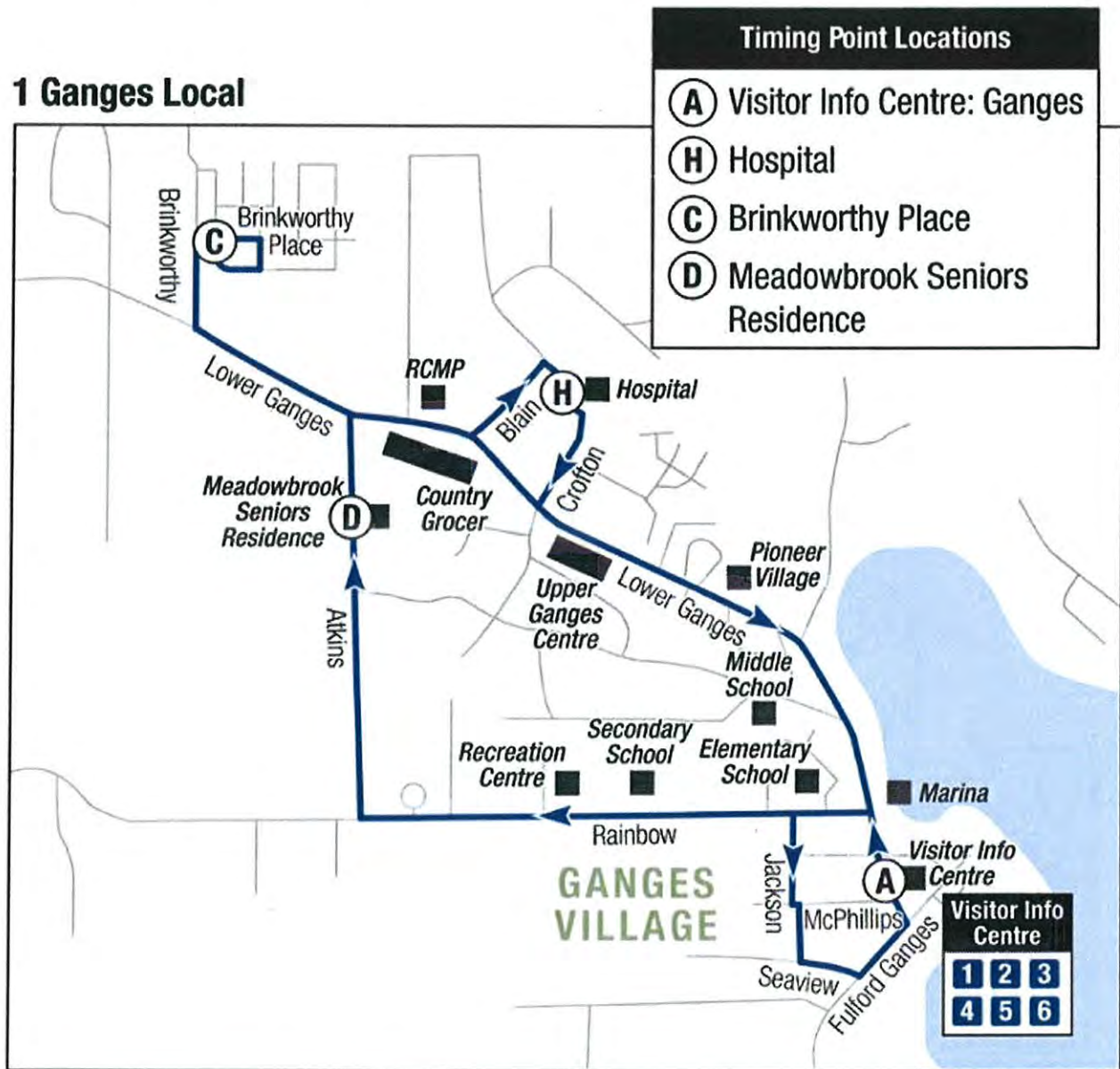
[\(/servlet/Satellite/salt-spring-island/fares/monthly-passes-flash\)](/servlet/Satellite/salt-spring-island/fares/monthly-passes-flash)

The Monthly Pass offers a discount for unlimited travel through the month.

# BC Transit

## Route 1: Ganges Local

### 1 Ganges Local





### Mon-Thu Schedule (Clockwise)

Visitor Info Center: Ganges	Meadowbrook	Hospital / Crofton Rd.	Brinkworthy Place	Visitor Info Center: Ganges
10:15 AM	10:18 AM	10:21 AM	10:25 AM	10:32 AM
12:50 PM	12:53 PM	12:56 PM	1:00 PM	1:07 PM
2:05 PM	2:08 PM	2:11 PM	2:15 PM	2:22 PM
4:25 PM	4:28 PM	4:31 PM	4:35 PM	4:42 PM

### Friday Schedule (Clockwise)

Visitor Info Center: Ganges	Meadowbrook	Hospital / Crofton Rd.	Brinkworthy Place	Visitor Info Center: Ganges
10:15 AM	10:18 AM	10:21 AM	10:25 AM	10:32 AM
12:50 PM	12:53 PM	12:56 PM	1:00 PM	1:07 PM
2:05 PM	2:08 PM	2:11 PM	2:15 PM	2:22 PM
4:25 PM	4:28 PM	4:31 PM	4:35 PM	4:42 PM

### Saturday Schedule (Clockwise)

Visitor Info Center: Ganges	Meadowbrook	Hospital / Crofton Rd.	Brinkworthy Place	Visitor Info Center: Ganges
10:05 AM	10:08 AM	10:11 AM	10:15 AM	10:22 AM
12:30 PM	12:33 PM	12:36 PM	12:40 PM	12:47 PM
2:05 PM	2:08 PM	2:11 PM	2:15 PM	2:22 PM
4:05 PM	4:08 PM	4:11 PM	4:15 PM	4:22 PM

### Sunday Schedule (Clockwise)

Visitor Info Center: Ganges	Meadowbrook	Hospital / Crofton Rd.	Brinkworthy Place	Visitor Info Center: Ganges
10:05 AM	10:08 AM	10:11 AM	10:15 AM	10:22 AM
12:50 PM	12:53 PM	12:56 PM	1:00 PM	1:07 PM
2:40 PM	2:43 PM	2:46 PM	2:50 PM	2:57 PM
4:05 PM	4:08 PM	4:11 PM	4:15 PM	4:22 PM



Making a difference...together

Salt Spring Island Electoral Area  
145 Vesuvius Bay Road  
Salt Spring Island, BC, V8K 1L8

T: 250.537.4448

[www.crd.bc.ca](http://www.crd.bc.ca)

Salt Spring Island Transportation Commission  
Agenda May 4, 2015

## Appendix A

April 7, 2015

South Salt Spring Seniors OAPO Branch #170  
c/o Paul Way  
412 Isabella Point Road  
Salt Spring Island BC V8K 1V4

RE: OAPO Transportation Petition 2015

We are in receipt of your letter and petition with feedback on some transportation issues facing Salt Spring Island. Your correspondence has been forwarded to the Transportation Commission for consideration at their next regular meeting on April 27, 2015, to be held at the Salt Spring Island Public Library from 4 to 6 pm.

Thank you for taking the time and effort in making your concerns known.

A handwritten signature in blue ink that reads 'Karla Campbell'.

Karla Campbell  
Senior Manager  
Salt Spring Island Electoral Area

pc: Transportation Commission



RECEIVED APR 01 2015

To:- Salt Spring Island Transportation Commission

From:- South Salt Spring Seniors. OAPO branch #170

*acknowledge and place  
on April 27 T.C. Agenda*

To whom it may concern.

On behalf of our membership I would like to present the enclosed petition. Trust you will give our concerns consideration & that we will see some implementation.

Thank you in advance for your consideration & concern.



Paul Way. (on behalf of our membership)

(South Salt Spring Seniors OAPO branch #170)

# SOUTH SALT SPRING SENIORS

February, 2015

Subsequent to our interesting & informative talk, presented at our January meeting by Robin Williams chair of Salt Spring Island Transportation Commission, the members present felt we should petition the Commission on the following.

## **POINT to POINT rides by request**

Some type of small vehicle to connect areas away from main bus routes, picking riders up from their home & conveying them to the nearest bus stop & vice versa.. The service would be pre-requested & hopefully be available for 'pleasure' as well as medical & shopping appointments.

## **HOP ON --- HOP OFF availability on Ganges village route.**

It was mentioned that this route was under-utilized. The suggestion was made that people, especially the elderly, would make better use if the fare would be good for a certain time period that would allow as many stops as needed for all appointments, errands etc. to be accomplished.

Although the above would not necessarily be just for Seniors, it would be especially important for Seniors who can no longer drive. This service may allow 'South enders' to stay in their homes longer & for those that have had to move, to be able to visit friends & do other activities that they enjoy.

## **Fulford Parking**

The continuing parking situation in Fulford village was also discussed. Not only the inconvenience to village residents but the danger, not just for Seniors, in negotiating access to the bus stop at the terminal.

It is proposed to have a petition for our members to sign at the February lunch & in the rooms during ongoing activities.

Hopefully we will make ourselves heard!! Paul & Patricia

# SOUTH SALT SPRING SENIORS

February, 2015

## OAPO Transportation Petition 2015

<b>Petition summary and background</b>	<p>South Salt Spring Seniors advocate for: a 'POINT to POINT' 'transit' service to enable Seniors &amp; others to access the bus routes from their homes. This will enable us to participate in Island activities &amp; to stay in our own homes longer. This is even more important after we stop driving.</p> <p>AND:- when in Ganges to have a HOP ON-HOP OFF bus service.</p> <p>AND:- a solution to Fulford village parking</p>
<b>Action petitioned for</b>	<p>We, the undersigned, urge the Commission to act now to implement the above with the greatest of dispatch.</p>

Printed Name	Signature	Address	Comment	Date
Paul Way		412 ISABELLA PT RD. SSI.		FEB 16 2015.
Michael Bagnell		125 JONES RD. SSI		FEB 16 2015
Helga Bagnell	Helga Bagnell	"		"
P. ALBROUGH		261 MORNING SIDE		FEB 20 2015
B. Dams		151 Sunnyside Dr.		2/19/15
SUSAN PAYNTER		217 King Rd SSI		2/19/15
J. Reid		651 Stewart SSI		2/19/15
P. FLANNAGAN		456 ISABELLA PT RD		2/21/15
GEO LAUNDRY		2281 F/G RD SSI		2/21/15
Flo Laundry		"		2/21/15
Jacqueline Thomas		117 King Rd S.S.F. V3K1W9		2/21/15
Ian Thomas		"		2/21/15
John Flannagan		456 Isabella SSI.		21/2/15
BOB RUSH		123 TEAL PLACE		21/2/15
JIMMY RUSH		" " "		21/2/15

# SOUTH SALT SPRING SENIORS

February, 2015

Printed Name	Signature	Address	Comment	Date
DONNA WAY	Donna Way	4121 SABELLA PT. RD		FEB 23 2015
Betty Swindhurst	Al. Veldt	352 Sabella Pt Rd		23/02/ 2015
EMILY <small>Smith</small> HEPBURN	E Hepburn	182 Beaver Pt. Rd		25/2/15
Bob & Jimmy Gush	Bob	123 Ted Place		28/2/15
John Huddle	John	1240 NOSE PT RD		"
GISELA WELSH	Gisela	290 Southwood		28/2/15
IAN THOMAS	Ian Thomas	117 King Rd		28/2/15
Janice Finnemore	J. Finnemore	2681 Fulford - Hungerford		28/2/15
NANCY MAUDE AGNES	Nancy M. Maude	131 Morningside Rd. Fulford		20/3/15
CUNNINGHAM	Agnes Cunningham	247 Morningside Rd. Fulford		20/15/15
ART FARROW	A. Farrow	212 HORN LANE HORNWATER		20/3/20
Anne Derelian	Anne Derelian	217 Menhnick Dr SSI		20/03/15
Shirley ADSHED	Shirley Adshed	500 Reynolds Rd		20/03/15
Linda Stafford	Linda L. Stafford	294 Churchill SSI		21/3/15
Joan Byrne	Joan Byrne	123 Humphreys Hill		Mar 21/15
Joie W. W. W.	Joie W. W.	294 Churchill SSI		21/3/15
V. Olchowicki	V. Olchowicki	231 Fairway Ci.	thanks for conceding!	21/3/15
J. SMITH	J. Smith	#33-258 Lower Crags Rd		21/3/15