



Making a difference...together

#RWSC 2008 -15

**REPORT TO REGIONAL WATER SUPPLY COMMISSION  
MEETING OF WEDNESDAY, 18 JUNE 2008**

---

SUBJECT 400 MM WATER MAIN EXTENSION TO THE DISTRICT OF HIGHLANDS

PURPOSE

To award a sole source contract for the extension of the Millstream Road water main to the District of Highlands boundary.

BACKGROUND

In 2006, with the addition of the District of Highlands (Highlands) to the participating area of the water supply local service, responsibility for the water main on Millstream Road was transferred from the Juan de Fuca Water Distribution Commission to the Regional Water Supply Commission (Commission). The Commission agreed to upgrade and extend the water main to the border of Highlands. The work was included in the 2008 capital budget based on the expectation that the owners of the Highlands industrial area would be ready to proceed with development in 2008. Early in 2008, Capital Regional District (CRD) Water Services received a request from the business owners in the Highlands industrial area indicating the need for water by the summer of 2008.

The existing 400 mm water main ends at the entrance to 2120 Millstream Road just north of Bear Mountain Parkway. The pipe will be extended 470 m to the Langford/Highlands boundary (refer to Figure 1 attached). Due to the heavy traffic and the narrow road, the City of Langford has requested that we pursue joint trench construction with the proposed sanitary sewer, which is being constructed by Scansa Construction Ltd., to avoid Millstream Road being dug up twice. The water main extension has been designed by Focus Corporation and a sole source tender was received from Scansa Construction.

ALTERNATIVES

1. Award the sole source tender to Scansa.
2. Proceed with the normal public tender process.

FINANCIAL IMPLICATIONS

Alternative 1 This project is one phase of the upgrades to Millstream Road water mains under the 2008 budget, which has a total budget of \$1,330,000. This phase represents approximately 40% of total length to be upgraded. This alternative will have construction completed within approximately 3 months and delivery of the water to the Highlands border by the end of September 2008.

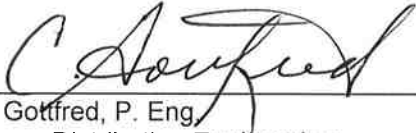
Staff met with Scansa Construction and reviewed the pricing of the tender for this project. This section of Millstream Road is a Section 4 road and therefore, the road right-of-way is limited to the width of the paved surface including the shoulder. This increases the problems for design and construction. One of the major design hurdles is the crossing of the Millstream Creek, where the odd alignment of the bridge and steepness of the creek resulted in modifications to the bridge abutment to accommodate both the sewer and water main. The cost of this item was approximately 25% higher than expected. A number of changes were negotiated with their representative, which reduced the negotiated price from \$663,009.74 to \$628,821.07.

The Tender Price represents approximately 45% of the Millstream water main budget. While the price is slightly higher than expected, the cost can be attributed to the two high cost items, the bridge crossing and the narrow right-of-way.

Alternative 2 Following the normal tendering process will result in the water main being constructed after completion of the sewer in September. Completion of the water main would be by about the end of November or early December. Traffic would be disrupted on the narrow Millstream Road for about 6 months, supply of water to the Highlands delayed until December 2008, and the City of Langford may refuse approval.

RECOMMENDATION

That the Regional Water Supply Commission award the tender to Scansa Construction for the sole source tender price of \$628,821.07 including GST.



---

Craig Gottfred, P. Eng.  
Manager, Distribution Engineering  
Engineering & Planning



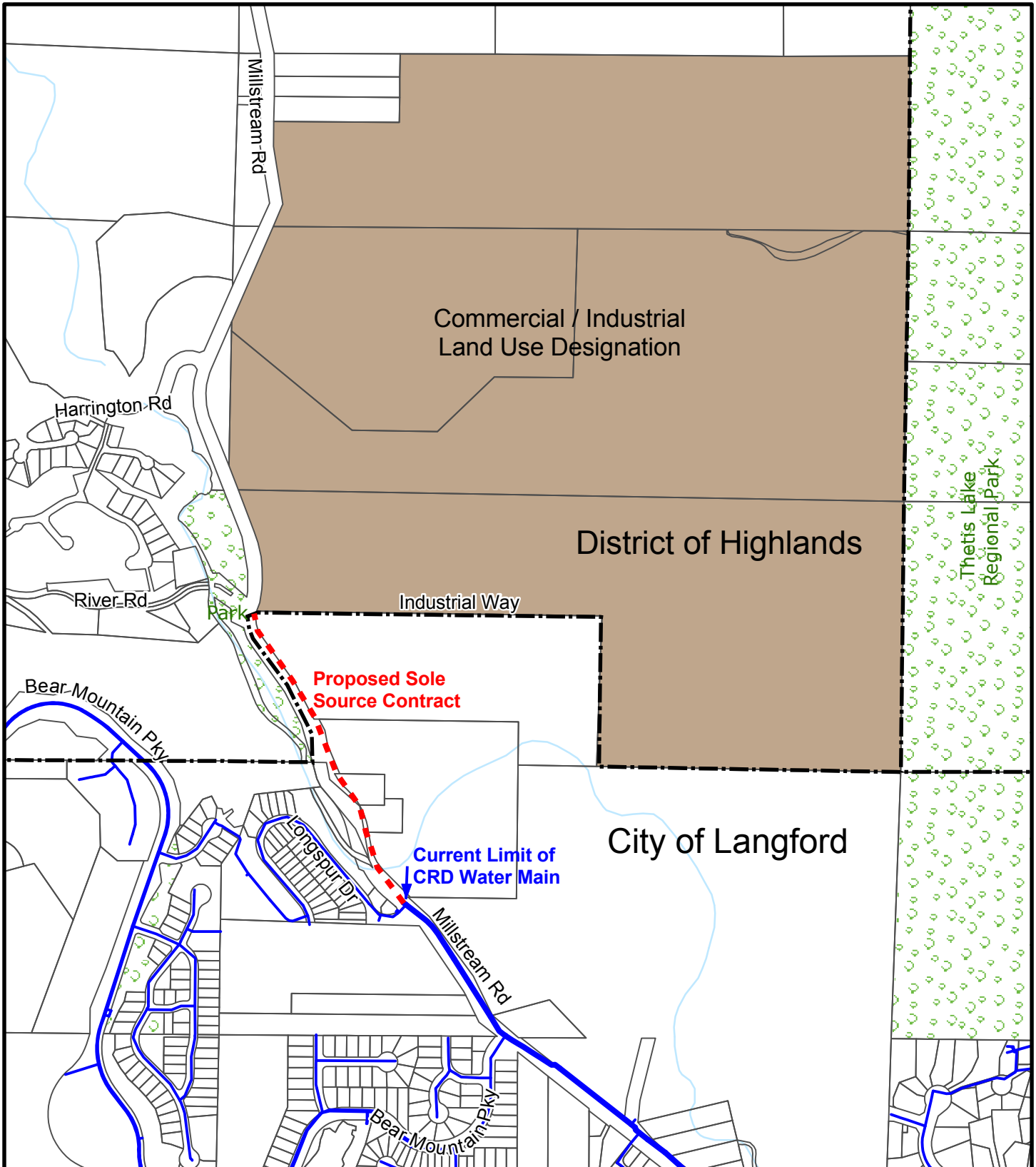
---

J.A. (Jack) Hull, MBA, P.Eng  
General Manager, Water Services  
Concurrence



---

T.M. Tanton, P.Eng.  
Senior Manager, Engineering & Planning



1:8,000  
 0 50 100 200 Meters



Projection: UTM, North American Datum: 1983

The Capital Regional District Water Services does not warrant the accuracy of this information on this map, nor will it accept responsibility for errors or omissions. CRD Water Services reserves the right to alter or update this information without notice.

## Highlands Industrial Area

District of Highlands



Figure 1

June 2008