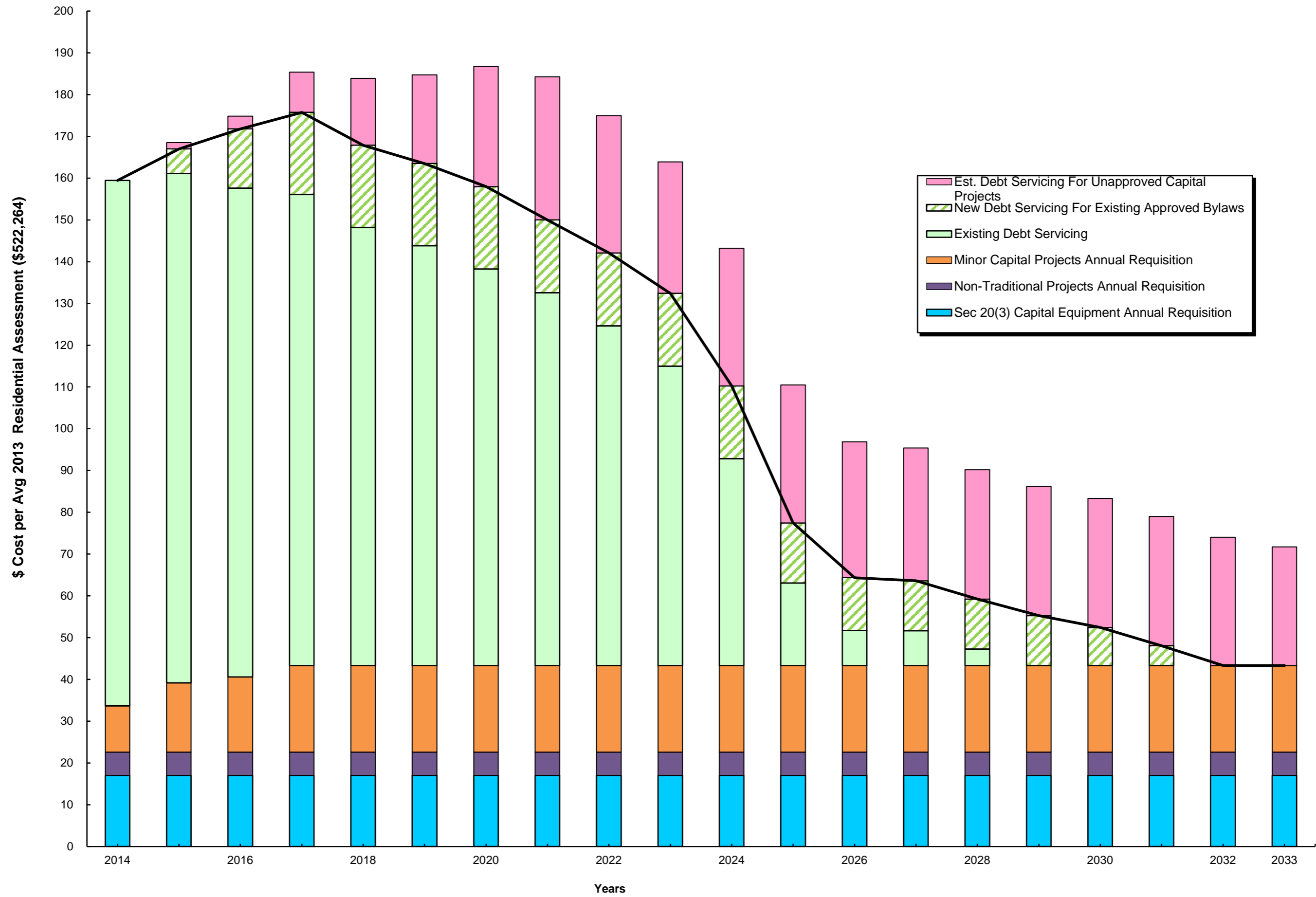


**CAPITAL REGIONAL HOSPITAL DISTRICT**  
**Debt Servicing (2014-2033) for 10 Year Capital Plan (2014-2023)**  
**MFA Borrowing Terms 5-20yrs**

APPENDIX B



Debt Servicing has not been adjusted for PILTs, Interest Income, Admin and MFA Financing Fees.  
 Prepared by: CRD Finance, October 1, 2013

**CAPITAL REGIONAL HOSPITAL DISTRICT**  
**Existing and Estimated Debt Servicing (2014-2033) for 10 Year Capital Plan (2014-2023)**  
**Cost per Average 2013 Residential Assessment (\$522,264)**  
**Based on MFA Borrowing Terms of 5, 10, 15, 20 years**

Year	Existing Debt Servicing	Capital Exp (2014-2023) Estimated Debt Servicing	Total Debt Servicing	Section 20 Expensed			Total Requisition <sup>4</sup>	Total Requisition Value
				Capital Equipment	Non-Traditional Projects	Minor Capital Projects		
2014	125.81	0.00	125.81	17.02	5.54	11.07	159.44	29,352,507
2015	121.94	7.39	129.32	17.02	5.54	16.61	168.49	30,999,467
2016	117.03	17.23	134.26	17.02	5.54	17.99	174.80	32,152,506
2017	112.72	29.29	142.01	17.02	5.54	20.76	185.32	34,062,464
2018	104.84	35.70	140.55	17.02	5.54	20.76	183.86	33,807,734
2019	100.45	40.93	141.38	17.02	5.54	20.76	184.70	33,970,352
2020	94.94	48.46	143.39	17.02	5.54	20.76	186.71	34,346,129
2021	89.25	51.66	140.91	17.02	5.54	20.76	184.22	33,909,333
2022	81.33	50.27	131.60	17.02	5.54	20.76	174.91	32,240,220
2023	71.67	48.88	120.55	17.02	5.54	20.76	163.87	30,257,224
2024	49.50	50.41	99.91	17.02	5.54	20.76	143.23	26,542,425
2025	19.76	47.37	67.13	17.02	5.54	20.76	110.45	20,633,373
2026	8.36	45.18	53.54	17.02	5.54	20.76	96.85	18,191,336
2027	8.33	43.71	52.05	17.02	5.54	20.76	95.36	17,935,956
2028	3.96	42.86	46.83	17.02	5.54	20.76	90.14	17,007,255
2029	0.00	42.86	42.86	17.02	5.54	20.76	86.18	16,305,517
2030	0.00	40.02	40.02	17.02	5.54	20.76	83.34	15,806,598
2031	0.00	35.68	35.68	17.02	5.54	20.76	79.00	15,038,362
2032	0.00	30.67	30.67	17.02	5.54	20.76	73.99	14,148,319
2033	0.00	28.36	28.36	17.02	5.54	20.76	71.68	13,746,809
								500,453,885

**Notes:**

- 1) Debt Servicing - debt payments are incurred in the following year of the borrowing resulting in a timing difference between the capital expenditure and the debt payments.
- 2) Debt Financing Terms for New Debt - five, ten, fifteen years
- 3) Future Debt Interest Rates
 

2014	- 5yr (4.0%)	10yr (5.0%)	15yr (5.0%)
2015	- 5yr (5.0%)	10yr (6.0%)	15yr (6.0%)
2016+	- 5yr (5.0%)	10yr (6.0%)	15yr (6.0%)
- 4) 2014-2023 Capital Plan 2014 is different than the 2014-2018 Budget Requisition due to the following:
  - Prior year surplus carryforward
  - Interest income
  - Temporary borrowing costs
  - Debt financing expenses
  - Payments in lieu of taxes
  - Administration expenses
  - Timing differences on borrowing of debt