



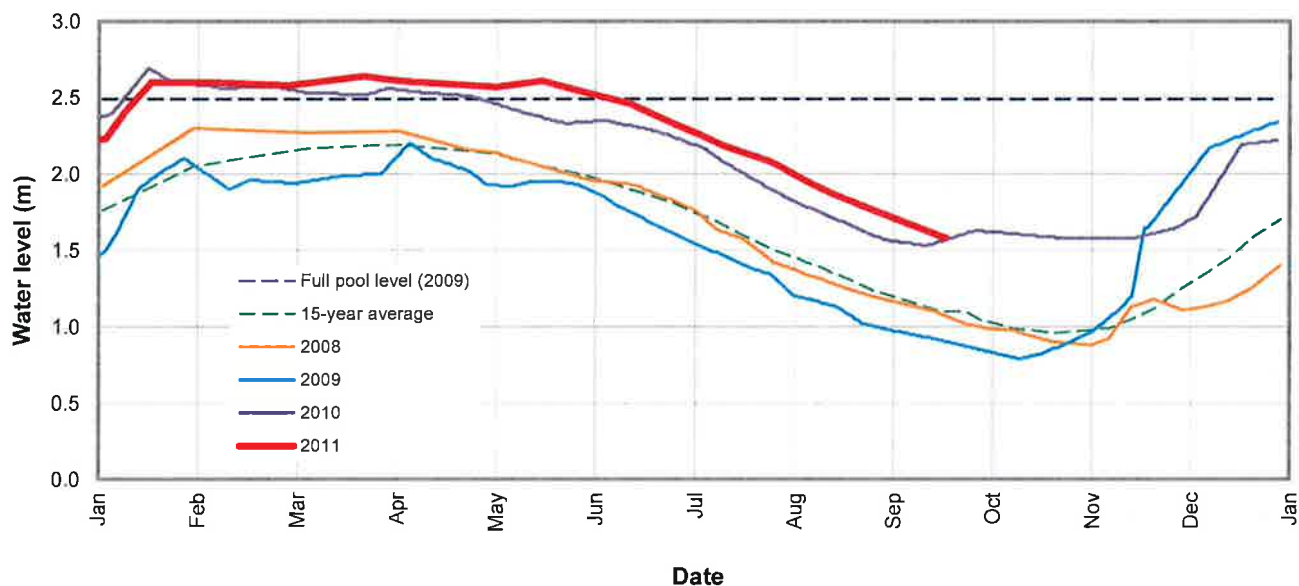
Making a difference...together

**MAGIC LAKE ESTATES WATER AND SEWER LOCAL SERVICES COMMITTEE
REPORT ON OPERATIONS
WEDNESDAY, 28 OCTOBER 2011**

Drinking Water Supply and Demand

Buck Lake levels are shown in **Figure 1**, compared to the 15-year average (pre-2008) and 2008-2010 levels. Storage decreased at about the same rate as in previous years through the summer, but remained higher than in any prior year due to the late start of warm, dry weather in 2011. Buck Lake remained at full pool until the mid-May this year, about two months later than normal.

Figure 1. Buck Lake Reservoir Levels



The total water production by the Buck Lake and Magic Lake water treatment plants in the first eight months of 2011 was 125,153 cubic metres (m³). This production is 7% lower than the same period in 2010, and 18% lower than the same period in 2008. Production by month is shown in **Figure 2**.

Drinking Water Quality

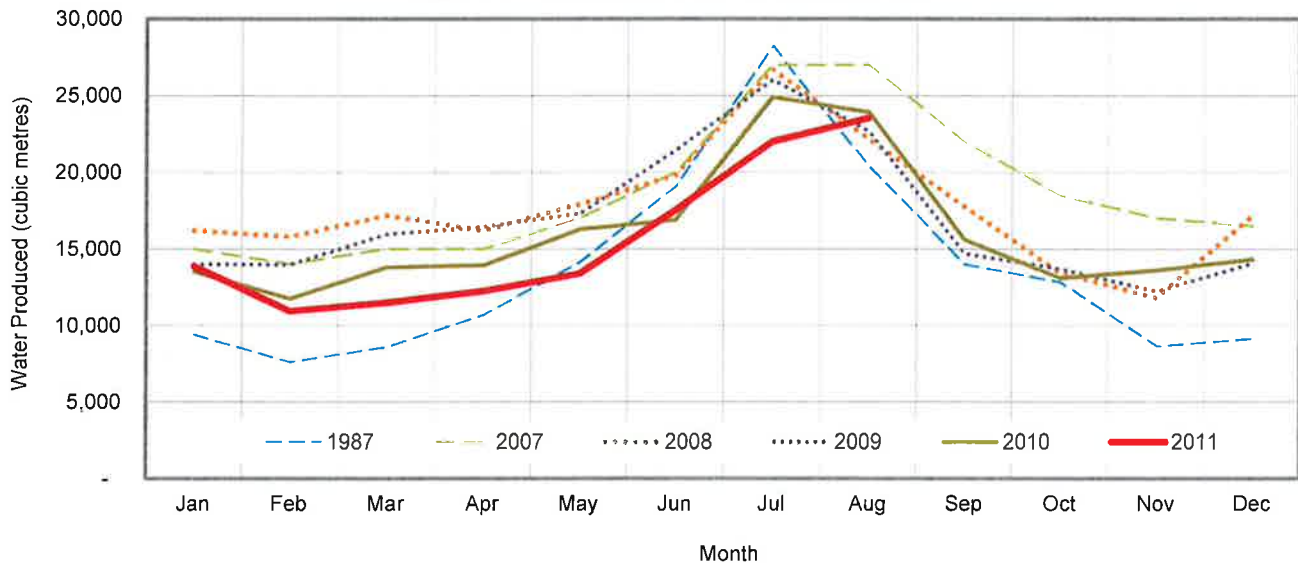
Typical Magic Lake Estates water quality characteristics include:

- Treated water is bacteriologically safe to drink.
- Treated water turbidity is occasionally greater than limit of 1 NTU.
- Total organic carbon is typically 6-8 milligrams per litre (mg/L)
- Total trihalomethanes (THMs) occasionally exceed limit of 100 mg/L.
- Metals are typically below *Guidelines for Canadian Drinking Water Quality (GCDWQ)* limits.
- Raw source water has significant colour and water sources are subject to algal blooms.

Water Quality data is now being posted on the CRD website at:

<http://www.crd.bc.ca/southern Gulf/water/magic-lake/water-quality.htm>

Figure 2. Total Water Production by Month



Drinking Water Operations

A summary of significant operational events in June to September 2011 follows:

- June
 - Paving work completed at Schooner way
 - Water service turned on at 3712 Bosun Way
 - Idlers installed on some unused service connections.
 - Valve exercising on Cutlass court resulted in a color complaint. Resolved by flushing at a nearby standpipe.

- July
 - Repaired two water service lines damaged by excavating contractor at Storm Cres.
 - Responded fire chief's call to shut off water service to 47300 Schooner due to house fire

- August
 - Found and repaired water leak near 3727 Bosun
 - Raised two meter boxes per owner requests at Cannon Cres.
 - Buck Lake water intake floated. Operators from Saanich Peninsula and contract divers were dispatched to assist with temporary and permanent repairs

- September
 - Contract divers assisted with replacement of intake check valve at Magic Lake
 - Completed water connection at 1606 Schooner

Water System Upgrade Project

The water supply, treatment and distribution upgrade project is progressing through the design stage. AECOM has requested shop drawings from the preferred equipment vendor (Corix), in order to complete detailed design of the water treatment plant. A final report on the comprehensive review of the water system is anticipated this month.

Klohn Crippen Berger has completed the design of the Buck Lake improvements, and is awaiting comment on the proposed design from the Ministry of Environment. Construction is planned for late summer 2012, as lower water levels are required for construction.

Wastewater Operations

A summary of significant operational events in June to September 2011 follows:

- | | |
|-----------|---|
| June | <ul style="list-style-type: none">• Investigated using video and repaired a sewer backup at 2732 Spyglass. Roots were found growing into a 150mm sewer under a sunroom. |
| July | <ul style="list-style-type: none">• Responded to homeowner's complaint at 47300 Schooner – homeowner's sewer pump was faulty• Sludge transfer pump failed at Schooner WWTP |
| September | <ul style="list-style-type: none">• Completed sewer connection at 1606 Schooner |

Sewer System Engineering Study

Work on the study by Stantec Inc. is approximately 75% complete. A draft report is anticipated this month.



Tim Tanton, P.Eng.
Senior Manager, Infrastructure Engineering



J.A. (Jack) Hull, MBA, P.Eng.
General Manager, Integrated Water Services
Concurrence

CS/TT:ls