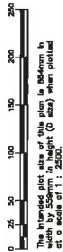


TENTATIVE SUBDIVISION PLAN OF PART OF THE EASTERLY 1/2 OF THE NORTH WEST 1/4 OF SECTION 36, TOWNSHIP 13, RENFREW DISTRICT, EXCEPT THAT PART SHOWN COLOURED RED ON PLAN 346-R, AND EXCEPT THOSE PARTS IN PLANS 22475, 24267, 24755, 29515, 41154, 50819 AND VP59967 and THE NORTH EAST 1/4 OF SECTION 36, TOWNSHIP 13, RENFREW DISTRICT

BCSS 920.058



LEGEND

Plan dimensions are all Ground Lines.
Prior to compilation of UTM, Distance multiplies by an Average Combined Scale Factor of 0.999724507.
All Distances and Elevations shown are in Metres.

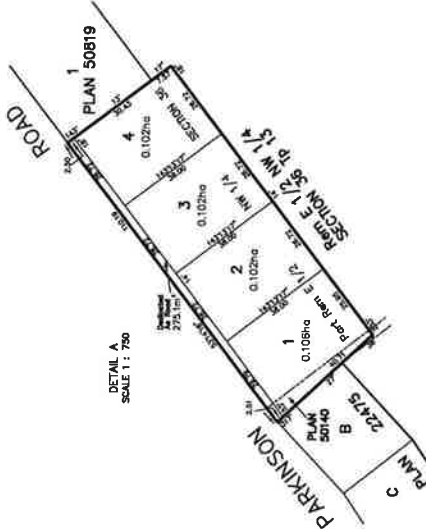
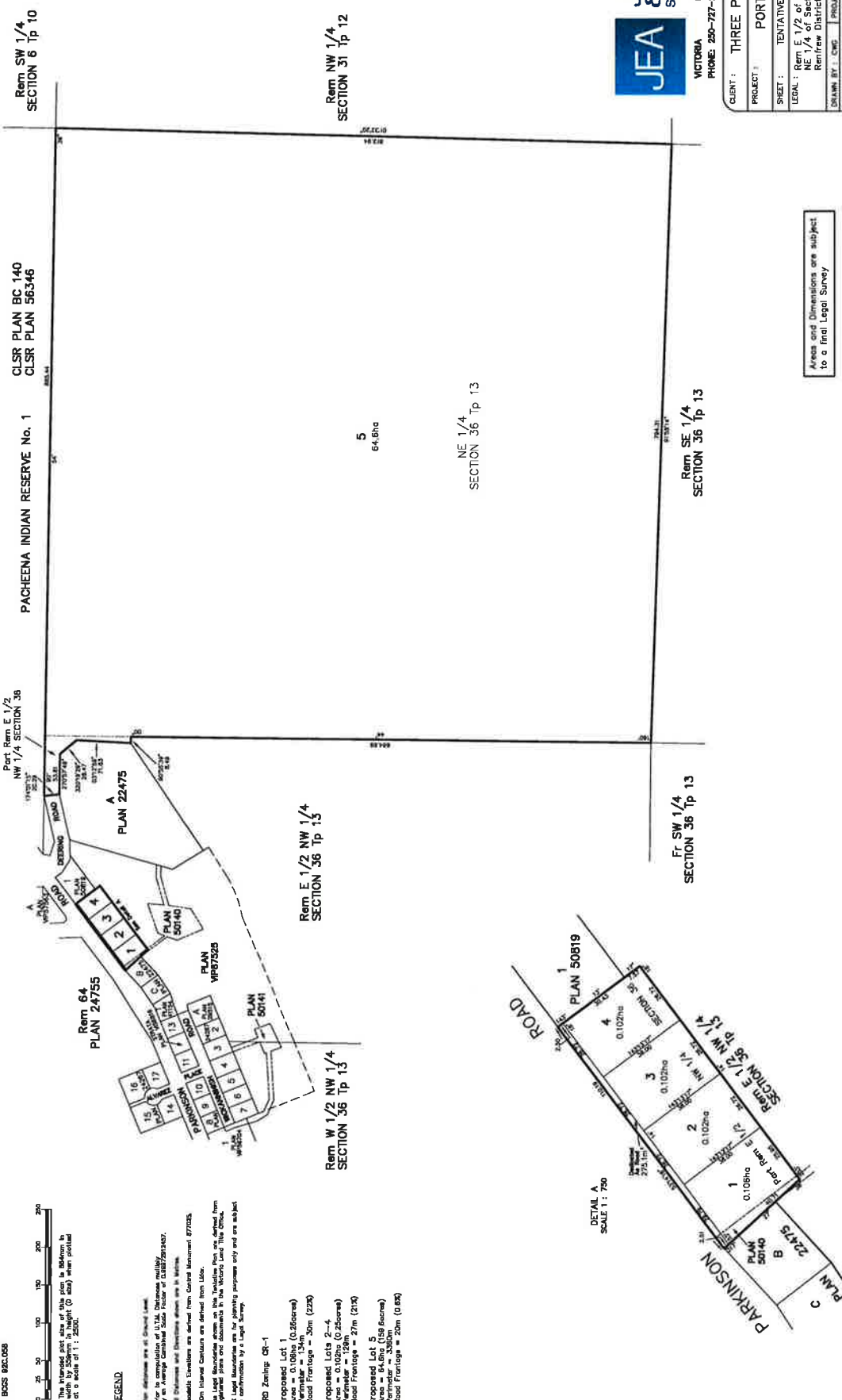
1. On Inland Counties are derived from LRR.
2. On Inland Counties are derived from LRR.
3. On Inland Counties are derived from LRR.
4. On Inland Counties are derived from LRR.
5. On Inland Counties are derived from LRR.

CRD Zoning: CR-1

Proposed Lot 1
Area = 0.108ha (0.266acre)
Perimeter = 122m
Road Frontage = 30m (229)

Proposed Lots 2-4
Area = 0.108ha (0.266acre)
Perimeter = 122m
Road Frontage = 27m (214)

Proposed Lot 5
Area = 64.8ha (159.8acre)
Perimeter = 122m
Road Frontage = 20m (0.83)



Areas and Dimensions are subject to a final Legal Survey

JEA
J.E. ANDERSON & ASSOCIATES
SURVEYORS - ENGINEERS
VICTORIA NANAIMO PARKSVILLE
PHONE: 250-727-2214 FAX: 250-727-3395

CLIENT :	THREE POINT PROPERTIES
PROJECT :	PORT RENFREW
SHEET :	TENTATIVE SUBDIVISION PLAN
LEGAL :	Rem E 1/2 of the NW 1/4 of Section 36 and Rem E 1/4 of Section 36, both in Township 13 Renfrew District
DRAWN BY :	CHP
PROJECT SUPERVISOR :	DANNY GARDNER
SCALE :	1:2500
DATE :	JAN 24, 2011
OUR DRAWING :	PortRenfrew.dwg
LANDR:	ENR09_1em_50819
SECTION:	COMBINA\COMBINA\PORT_RENFREW\PORTRENFW\PORTRENFW.DWG
OUR FILE :	25033
REVISION :	

This plan has utility for Central Renfrew District.