

# Integrated Solid Waste & Resource Management Plan

Environmental Services Committee

February 25, 2015



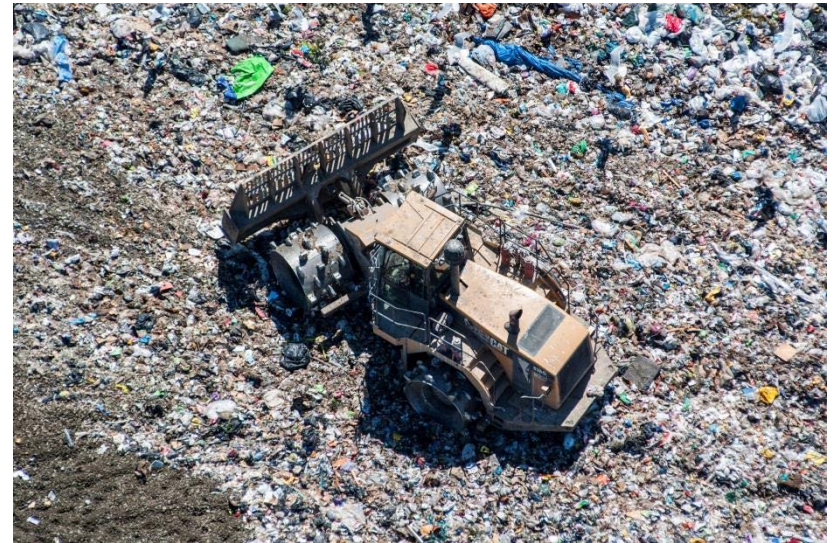
## What we will cover:

- Environmental Resource Management Overview
- 2015 Environmental Resource Management Strategic Priorities
  1. Integrated Solid Waste and Resource Management Plan
  2. Regional Kitchen Scraps Processing
  3. Environmental Resource Management Business Model

# Waste Diversion



# Waste Disposal



120,000 households served by the blue box program for 25 years



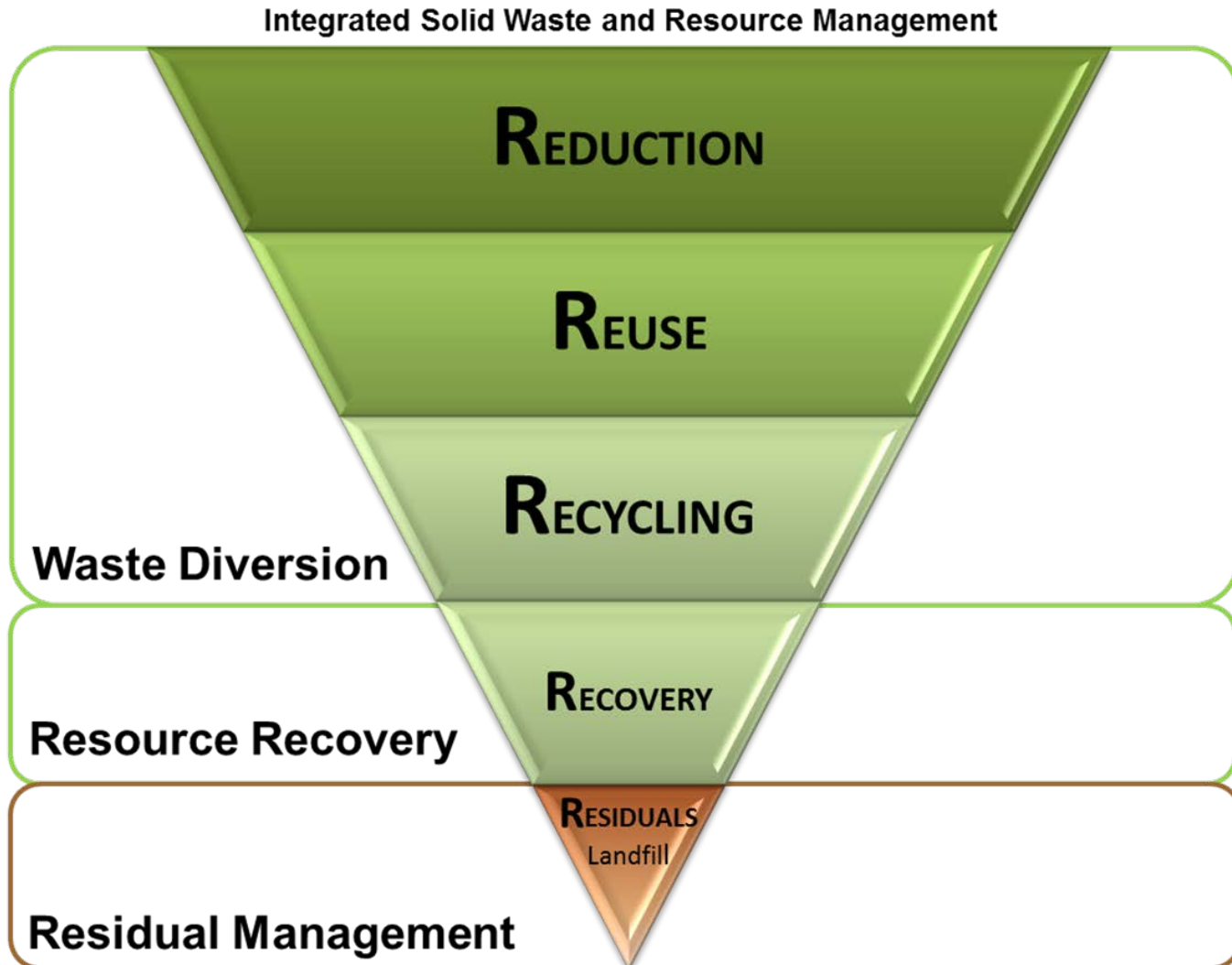
**400 tonnes** of waste delivered each day to Hartland landfill

Enough electricity recovered from landfill gas to power **1,600 homes**



- 1. Integrated Solid Waste and Resource Management Plan (SWMP)**
- 2. Regional Kitchen Scraps Processing**
- 3. ERM Sustainable Business Model**

# 1 - Solid Waste Management Plan



## SWMP Revision Process



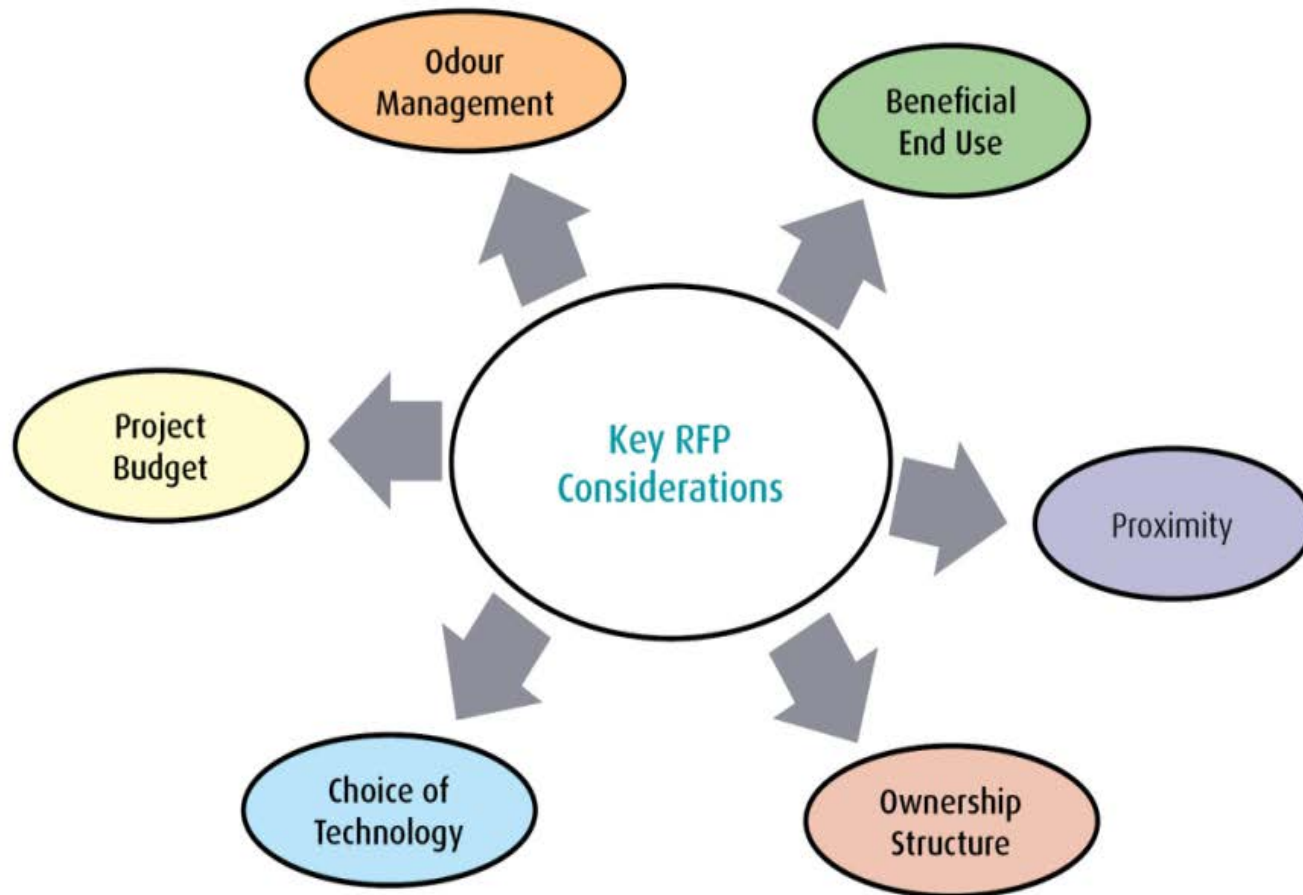


## 2 - Kitchen Scraps Processing

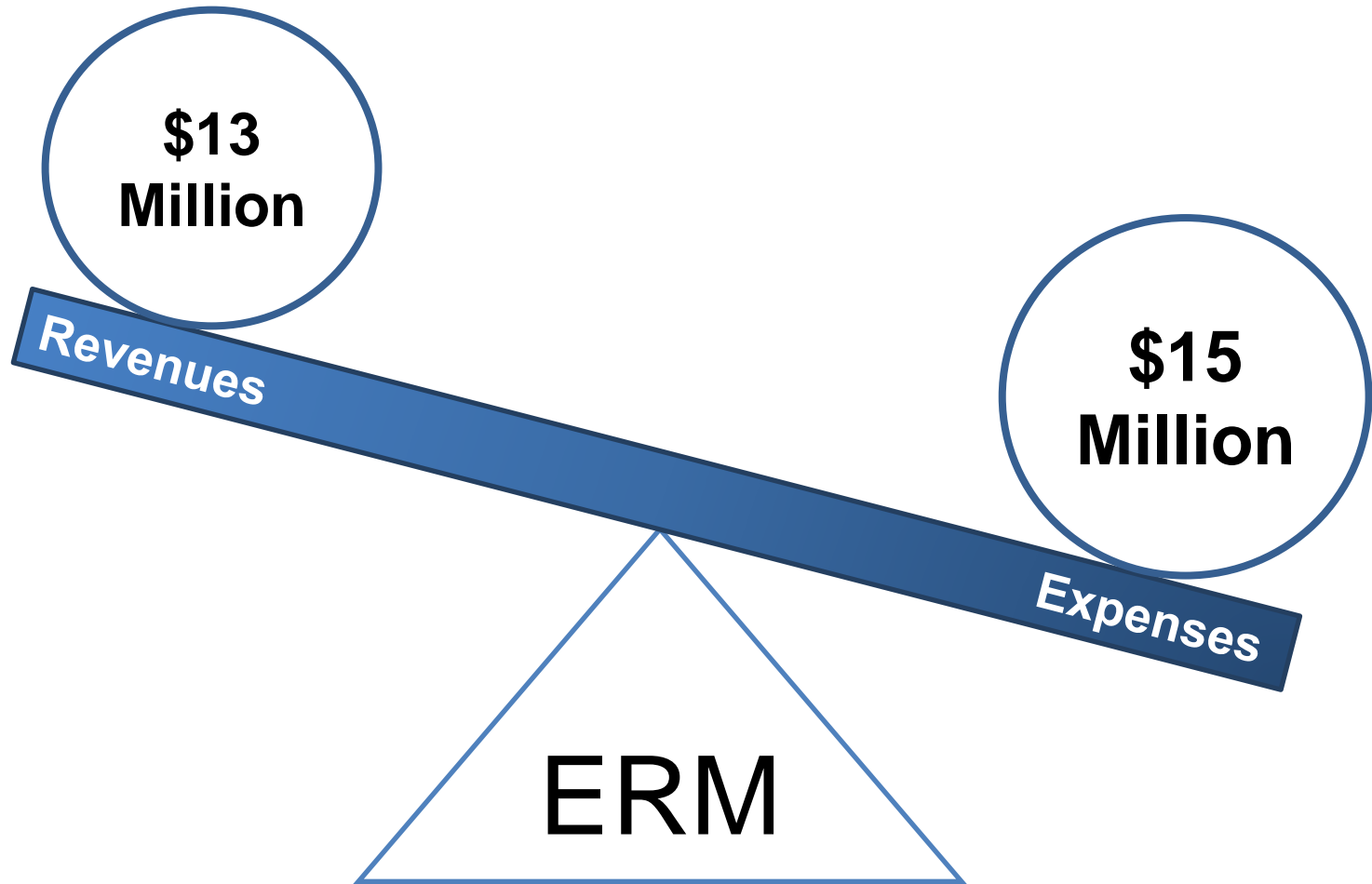
In 2014, **10,000+ tonnes** of kitchen scraps were diverted from Hartland landfill



## Request for Proposals



# 3 - ERM Business Model



## **ERM Disposal / Diversion Targets**

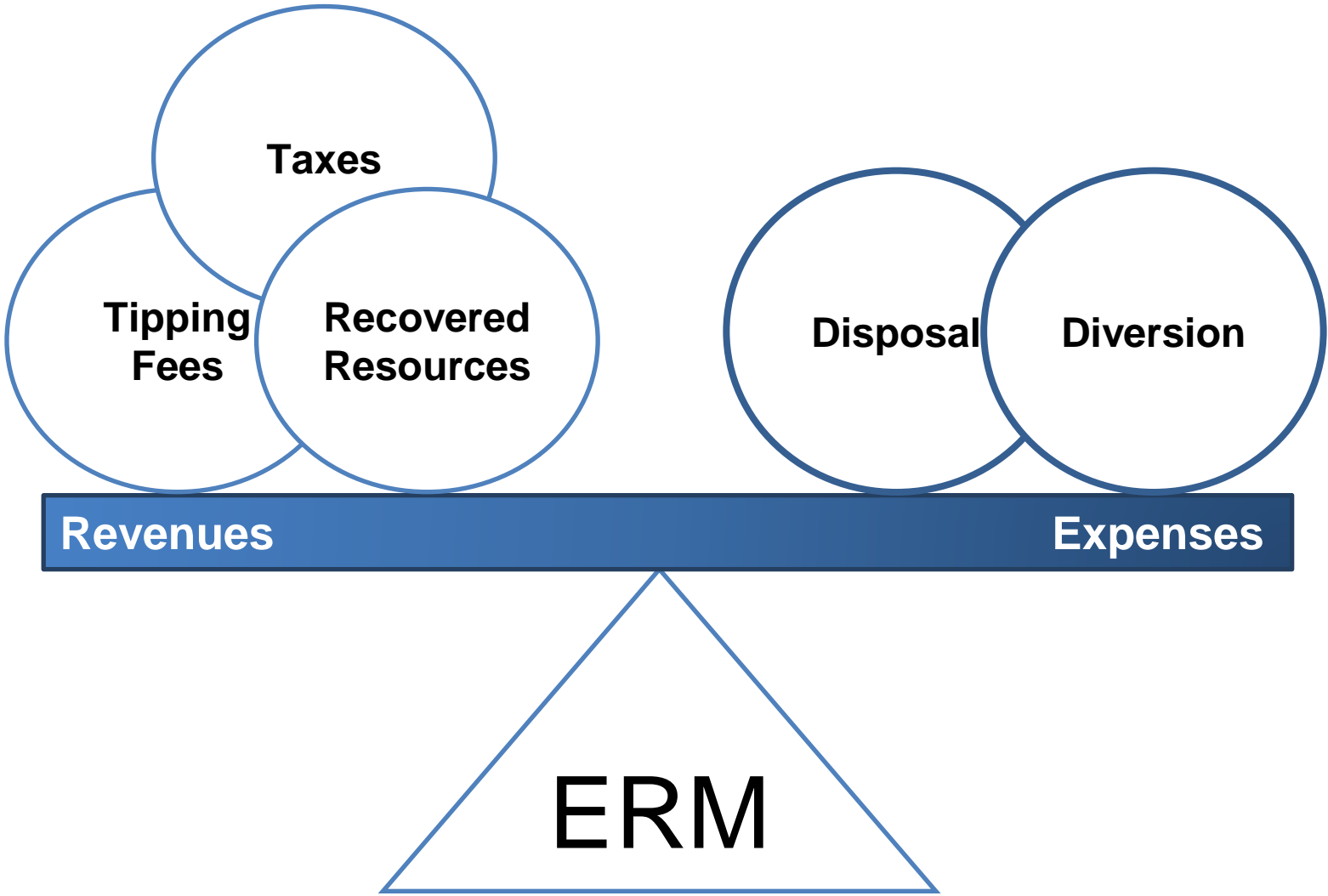
- Provincial 2020 Disposal Target - 350kg/capita
- CRD 2014 Disposal ~ 370kg/capita

## **ERM Operating Costs**

- Waste Disposal (Hartland) ~ \$80/tonne
- Waste Diversion (Recycling) ~ \$200/tonne

## **ERM Revenue Requirement?**

# ERM Business Model



# Questions?

[rsmith@crd.bc.ca](mailto:rsmith@crd.bc.ca)