

**2013 Program Summary Report
Year to Date 31-October-2013**

SCHEDULE A-1

	2013 Budget	Year to Date Actuals	Commitments Unpaid (CU)	Total YTD Actuals + CU	Forecast Actuals 2013	Variance Budget - Forecast	Projected CU Dec 31 2013
CAWTP - WW Treatment							
CAWTP - WW Treatment, Outfall, Harb Wastewater Treatment - McLoughlin	16,097,000	8,644,145	1,631,099	10,275,244	11,000,000	5,097,000	1,000,000
CAWTP - Conveyancing							
Conveyancing-Pump Stns, Pipes, Tank	16,921,000	1,310,106	9,844,780	11,154,886	4,000,000	12,921,000	11,000,000
CAWTP - Biosolids & Energy Facility							
CAWTP - Biosolids Energy Biosolids Plant/Energy Ct-Hartland	27,090,000	2,491,626	5,403,181	7,894,807	5,000,000	22,090,000	2,000,000
COMMON COSTS *	5,307,000	2,913,278	2,006,827	4,920,105	5,100,000	207,000	500,000
TOTAL	65,415,000	15,359,155	18,885,887	34,245,042	25,100,000	40,315,000	14,500,000

* Note: In the approved plan, common costs were distributed amongst the three components. These will be allocated as the project progresses.

**Core Area Wastewater Treatment Program
Program Management Expenditure Report
Year to Date 31-October-2013**

SCHEDULE A-2

	<u>2013 Budget</u>	<u>Year to Date Actuals</u>	<u>Commitments</u>	<u>Actuals + Commitments</u>	<u>Budget Remaining</u>
CAPITALIZED COSTS					
Salaries and Wages	1,004,000	742,836		742,836	261,164
Consultants	3,390,000	1,429,051	1,959,912	3,388,963	1,037
Allocations - Finance	22,000	18,250		18,250	3,750
Allocations - IT	44,000	29,610		29,610	14,390
Allocations - Human Resources	57,000	47,200		47,200	9,800
Allocations - Other (OutReach, Admin)	70,000	53,674		53,674	16,326
Rentals and Leases	227,000	185,010	38,646	223,656	3,344
Operating - Other Costs	209,000	194,702	7,731	202,433	6,567
	<u>5,023,000</u>	<u>2,700,333</u>	<u>2,006,289</u>	<u>4,706,622</u>	<u>316,378</u>
TOTAL	5,023,000	2,700,333	2,006,289	4,706,622	316,378

Note 1: In the approved plan, common costs were distributed amongst the three components. These will be allocated as the project progresses.

Note 2: Budget transfers have been processed between line items in October

**Core Area Wastewater Treatment Program
Commission Expenditure Report
Year to Date 31-October-2013**

SCHEDULE A-3

	<u>2013 Budget</u>	<u>Year to Date Actuals</u>	<u>Commitments</u>	<u>Actuals + Commitments</u>	<u>Budget Remaining</u>
CAPITALIZED COSTS					
Salaries and Wages	164,000	113,391	0	113,391	50,609
Travel	27,000	16,273	0	16,273	10,727
Operating - Other Costs	93,000	83,281	538	83,819	9,181
	<u>284,000</u>	<u>212,945</u>	<u>538</u>	<u>213,483</u>	<u>70,517</u>
TOTAL	<u>284,000</u>	<u>212,945</u>	<u>538</u>	<u>213,483</u>	<u>70,517</u>

Note 1: in the approved plan, common costs were distributed amongst the three components. These will be allocated as the project progresses.

Note 2: Budget transfers have been processed between line items in October

**Seatterra Program
Financial Plan**

Schedule B

	Preliminary Project to Date (Note 1) Dec 31 2012	Budget 2013	2014	2015	2016	2017	2018	Total
CAWTP WW Treatment,								
CAWTP- WW Treatment, Outfall, Harb								
Wastewater Treatment - McLoughlin	399,000	16,097,000	39,704,450	77,562,632	142,765,944	58,239,390	1,188,889	335,957,305
Commission and Project Mgt allocation	337,448	2,441,220	3,959,554	3,847,715	5,220,403	5,091,244	7,811,111	28,708,695
Total - CAWTP- WW Treatment	736,448	18,538,220	43,664,004	81,410,347	147,986,347	63,330,634	9,000,000	364,666,000
CAWTP-Conveyancing								
Conveyancing-Pump Stns, Pipes,Tank	3,153,000	16,921,000	25,027,634	53,502,633	18,569,335			117,173,601
Commission and Project Mgt allocation	337,448	849,120	2,495,898	2,654,150	642,782	0	0	6,979,398
Total Conveyancing	3,490,448	17,770,120	27,523,532	56,156,783	19,212,117	-	-	124,153,000
CAWTP - Biosolids & Energy Facility								
Biosolids Energy - CAWTP								
Biosolids Plant/Energy Ct-Hartland	2,143,000	27,090,000	12,930,950	66,101,126	116,299,818	52,479,924	141,381	277,186,199
Commission and Project Mgt allocation	337,448	2,016,660	1,289,548	3,279,134	4,241,815	4,587,756	928,889	16,681,250
Total Biosolids	2,480,000	29,106,660	14,220,498	69,380,260	120,541,633	57,067,680	1,070,270	293,867,001
CAWTP - PM Project Management								
Project Management & Commission								
Common costs								
Commission	124,161	284,000	329,000	338,000	347,000	337,000	337,000	2,096,161
Project Management	888,181	5,023,000	7,416,000	9,443,000	9,758,000	9,342,000	8,403,000	50,273,181
Subtotal	1,012,343	5,307,000	7,745,000	9,781,000	10,105,000	9,679,000	8,740,000	52,369,343
Allocation	-1,012,343	-5,307,000	-7,745,000	-9,781,000	-10,105,000	-9,679,000	-8,740,000	(52,369,343)
Total Project Management & Commission	(0)	-	-	-	-	-	-	(0)
Total	6,706,895	65,415,000	85,408,034	206,947,390	287,740,097	120,398,314	10,070,270	782,686,000

Sources of funding

Government of Canada		10,000,000	35,923,000	47,959,000	76,118,000		83,400,000	253,400,000
Province of BC							248,000,000	248,000,000
CRD Capital funds	6,707,000	9,000,000						15,707,000
Requisition (Note 3)		5,000,000	10,000,000	15,000,000	20,000,000	25,000,000	30,000,000	105,000,000
Debt		41,415,000	39,485,000	143,988,000	191,622,000	95,398,000	(351,329,000)	160,579,000
	6,707,000	65,415,000	85,408,000	206,947,000	287,740,000	120,398,000	10,071,000	782,686,000

Note 1: Preliminary project to date includes land purchases from prior years and implementation phase costs starting August, 2012.

Note 2: Proponents may finance a portion of the Debt.

Note 3: Property tax or user fees as determined by participating Municipality.



**REPORT TO SEATERRA PROGRAM COMMISSION
MEETING OF FRIDAY, NOVEMBER 22, 2013**

SUBJECT SEATERRA PROGRAM MONTHLY PROGRESS REPORT NO. 6

ISSUE

A monthly report is required to comply with funding agreements, project controls and to provide current information to the Core Area Liquid Waste Management Committee (CALWMC), the Capital Regional District (CRD) Board, and the public.

BACKGROUND

At the Commission meeting of October 25, 2013 a revised format for the Monthly Program Progress Report was submitted and approved by the Commission. The report complies with the requirements of the funding agencies and with keeping the CAWLMC and the CRD Board as well as the general public informed on progress on the Program. The report will be posted on the website.

RECOMMENDATION

That the Seatererra Program Commission:

1. Approve the Monthly Program Progress Report No. 6 for October 2013.
2. Forward the Seatererra Program Progress Report No. 6 to the Core Area Liquid Waste Management Committee and Capital Regional District Board.

David N. Walker
Project Controls Manager
Seatererra Program

Albert Sweetnam, P. Eng
Program Director
Seatererra Program

DNW:mh:hr

Attachment: Appendix A: Monthly Program Progress Report No. 6



**Seaterra Program
Progress Report No. 6**

October 2013

Prepared by:

Seaterra Program Management Office

Seatterra Program Progress Report No. 6

In addition to reporting on activities that are the responsibility of the Seatterra Program Commission, this progress report also includes updates on activities that are the responsibility of the Core Area Liquid Waste Management Committee (CALWMC) and the Capital Regional District (CRD) Board, namely, activities related to facility siting and agreements with municipalities or other government agencies. Those matters that are the direct responsibility of the CALWMC and CRD Board are clearly identified in the text as “CRD responsibility” and are identified in Section 1.2.

Seatterra Program Progress Report No. 6

Table of Contents

Program Matrix - Summary

1.0 Executive Summary

- 1.1 Seatterra Program
- 1.2 Core Area Liquid Waste Management Committee (CALWMC)/Capital Regional District (CRD) Board Issues

2.0 Activities – McLoughlin Point Wastewater Treatment Plant

- 2.1 Design/Engineering Status
- 2.2 Procurement Status
- 2.3 Construction Status
- 2.4 Status of Approvals
- 2.5 Major Commitments This Period
- 2.6 Schedule
- 2.7 Significant Issues/Decisions Pending

3.0 Activities – Resource Recovery Centre

- 3.1 Design/Engineering Status
- 3.2 Procurement Status
- 3.3 Status of Approvals
- 3.4 Major Commitments This Period
- 3.5 Schedule
- 3.6 Significant Issues/Decisions Pending

4.0 Activities – Macaulay Pump Station

- 4.1 Design/Engineering Status
- 4.2 Status of Approvals
- 4.3 Major Commitments This Period
- 4.4 Schedule
- 4.5 Significant Issues/Decisions Pending

5.0 Activities – Craigflower Pump Station

- 5.1 Design/Engineering Status
- 5.2 Procurement Status
- 5.3 Construction Status
- 5.4 Status of Approvals
- 5.5 Major Commitments This Period
- 5.6 Schedule
- 5.7 Significant Issues/Decisions Pending

6.0 Activities – Clover Pump Station

- 6.1 Design/Engineering Status
- 6.2 Procurement Status
- 6.3 Status of Approvals

Seattera Program Progress Report No. 6

- 6.4 Major Commitments This Period
- 6.5 Schedule
- 6.6 Significant Issues/Decisions Pending

7.0 Activities – Currie Pump Station

- 7.1 Design/Engineering Status

8.0 Activities – Arbutus Road Attenuation Tank

- 8.1 Design/Engineering Status
- 8.2 Procurement Status
- 8.3 Status of Approvals
- 8.4 Major Commitments This Period
- 8.5 Schedule
- 8.6 Significant Issues/Decisions Pending

9.0 Activities – Clover Forcemain

- 9.1 Design/Engineering Status
- 9.2 Status of Approvals
- 9.3 Major Commitments This Period
- 9.4 Schedule
- 9.5 Significant Issues/Decisions Pending

10.0 Activities – Currie Forcemain

- 10.1 Design/Engineering Status

11.0 Activities – ECI/Trent Twinning

- 11.1 Design/Engineering Status

12.0 Activities – Macaulay Forcemain

- 12.1 Design/Engineering Status

13.0 Program Updates

- 13.1 Program Cost/Budget Update
- 13.2 Program Schedule Update
- 13.3 Procurement
- 13.4 Major Commitments This Period
- 13.5 Planning/Design/Engineering
- 13.6 Environmental
- 13.7 Safety

14.0 Communications

- 14.1 Communications

15.0 Program Financing

Seaterra Program Progress Report No. 6

- 15.1 Oversight Committee
- 15.2 Status of Funding Agreements
- 15.3 Status of Funding Received

Appendix A Monthly Program Cost Report
Appendix B Program Schedule Extracts

Overall Program

October 2013 Project Status

Engagement Metrics

SAFETY

- ✓ No Lost Time Incidents in the previous 3 months.

COST

- ✓ Program on budget - <20% Program Contingency Committed.

SCHEDULE

- ✓ On schedule, no impact to critical path.

QUALITY

- ✓ No critical NCR's recorded.

ENVIRONMENT

- ✓ No incidents or breach in regulatory compliance recorded.

RISK

- ⚠ Mitigation strategies in place for high probability high impact risks.
- ⚠ CRD Board decision on biosolids potentially impacts the Program Budget and Schedule

COMMUNITY

- ✓ Public & Municipal engagement ongoing.

Key Issues: No issues to report.

Financial Summary

(\$M)

Budget	782.6
Commitment To Date	40.5
Forecast at Completion	782.6
Variance	-

Schedule Key Dates

Target

McLoughlin Pt, Outfall, Harbour Crossing	
DBF Awarded	Q2 2014
Construction Complete	Q4 2017
Commissioning Complete	Q1 2018
Resource Recovery Centre & Pipeline	
DBFO Awarded	Q1 2015
Construction Complete	Q4 2017
Commissioning Complete	Q1 2018
Conveyance Pump & Pipeline	
Macaulay PS DB Awarded	Q3 2015
Clover PS DB Awarded	Q2 2014
All Conveyance Complete	Q4 2017

Legend

- ✓ On Track
- ⚠ Delayed At Risk
- ✗ Critical/Late

Seatterra Program Progress Report No. 6

1. Executive Summary

Program Progress Report No. 6 covers the period from October 1 to 31, 2013

1.1 Seatterra Program

- Costs this period are \$1,551,077 for a total cost to date of \$21,597,448, which is trending within budget and projected Seatterra Program (Program) cash flows.
- Commitments this period are \$230,353 for a total commitment to date of \$40,483,335 (approximately 5.2% of the Program Budget).
- Work is proceeding in accordance with the Program Schedule for completion in March 2018. Construction and commissioning of the McLoughlin Point Wastewater Treatment Plant (WWTP) continues to drive the Program critical path.
- During the month, the McLoughlin Design-Build-Finance (DBF) proponents have been requesting updates and information through the Request for Information (RFI) Process. Approximately 240 RFI's have been received to date and responded to. The majority of RFI's were technical in nature.
- Second collaboration sessions for two of the McLoughlin DBF proponents (separately) were held and the second collaborative session for the third proponent is scheduled in the first week of November.
- For a second time, each of the McLoughlin DBF proponents met (separately) with the Esquimalt Design Review Panel. A third meeting is planned for November
- Development and preparation of the Request for Qualifications (RFQ) for the Resource Recovery Centre (RRC) is ongoing and remains on schedule to be issued in November.
- The Request for Proposals (RFP) for the design consultant for the Arbutus Road Attenuation Tank closed on October 24th. Three (3) proposals were received and are being evaluated
- A RFQ for the Clover Point Pump Station Design Build was issued October 24th and is scheduled to close December 17th.
- Excavation work on the Craigflower Pump Station project is approximately 60% complete.
- RRC siting was confirmed by Capital Regional District (CRD) to be the Hartland site.
- CRD confirmed that CRD will maintain its current biosolids management policy which does not allow for land application of biosolids. This decision

Seatterra Program Progress Report No. 6

potentially impacts the Program Budget and Schedule. This will be studied in detail in the upcoming months.

- During the month the launch of the new Seatterra Program name/wordmark and the updated website continued.
- Major Issues:
 - CRD:
 - McLoughlin Point Zoning Approvals
 - Liquid Waste Management Plan (LWMP) Amendment No. 9
 - Commission/PMO:
 - Issue the RFQ for the RRC facility
 - Finalize Commission Engagement, Outreach and Communications Plan
 - Decision on approach for biosolids disposal
- Major Activities Planned Next Period:
 - CRD:
 - Finalize McLoughlin zoning approvals
 - LWMP Amendment No. 9 - report back to the CALWMC from the Technical and Community Advisory Committee.
 - Commission/PMO:
 - Reach agreement on approach for the disposal of the biosolids produced by the RRC
 - Award of a contract for the Design Consulting Services for the Arbutus Road Attenuation Tank
 - Approval of the Program Implementation Plan (PIP) and Communications Plan

1.2 Core Area Liquid Waste Management Committee/CRD Board Issues

- Finalize location of the RRC – the CRD Board approved a staff recommendation to confirm Hartland as the site for the RRC at the Board meeting on October 9th. The Board also recommended that the Commission structure the RFP to allow proponents to propose alternative sites.
- Completion of Federal and Provincial Funding Agreements – pending final zoning approvals and sign off by the Ministers.
- McLoughlin Point municipal rezoning – CRD continuing discussions with the Township of Esquimalt to resolve issues relating to the rezoning bylaw. The lack of this approval continues to concern the McLoughlin proponents.

Seatterra Program Progress Report No. 6

2. Activities – McLoughlin Point Wastewater Treatment Plant Project

2.1 Design / Engineering Status

2.1.1 Initial technology submissions were received from proponents and have been reviewed.

2.2 Procurement Status

2.2.1 RFP MC-300 for McLoughlin Point WWTP. Proponents are working on their submissions and have been requesting updates and information through the RFI Process. Approximately 240 RFI's have been received and responded to date. The majority of RFI's were technical in nature.

2.2.2 Second collaboration sessions for two of the McLoughlin DBF proponents (separately) were held and the session for the third proponent is scheduled in the first week of November.

2.2.3 Second Esquimalt Design Review Panel meetings were held (separately) with each of the three proponents. Some members of the Victoria Advisory Design Panel Committee also attended the meetings. Attendees at the meetings were required to sign a confidentiality agreement. A third meeting is scheduled for November.

2.2.4 The RFP submissions are scheduled in Q1 2014 for the McLoughlin WWTP DBF. The technical submission is due in January 2014 and the financial submission is due in February 2014.

2.3 Construction Status

2.3.1 Construction is anticipated to begin in Q2 of 2014.

2.4 Status of 3rd Party Approvals

2.4.1 McLoughlin Point siting approvals – CRD is continuing discussions with the Township of Esquimalt on approvals/agreements to resolve outstanding issues with the current bylaw. The main issue continues to be the offsets from the high water line.

2.4.2 Work is progressing on acquiring rights-of-way from Transport Canada for the Victoria Harbour Crossing.

2.4.3 Work continues with the Greater Victoria Harbour Authority to obtain utility rights-of-way and working easement at Ogden Point.

2.4.4 Discussions are ongoing with the Department of National Defense (DND) for a License Agreement to Access Federal Real Property for working easements, utility corridors and access for construction and operations. Additional discussions have commenced to determine if DND could provide additional laydown areas.

Seatera Program Progress Report No. 6

2.4.5 Planning for BC Hydro service extension to the McLoughlin site is in progress.

2.5 Major Commitments This Period

2.5.1 No major commitments this period.

2.6 Schedule

2.6.1 The DBF procurement process is underway and remains on schedule.

2.7 Significant Issues/Decisions Pending

2.7.1 Municipal approvals for the McLoughlin Point site.

3. Activities – Resource Recovery Centre (RRC)

3.1 Design/Engineering Status

3.1.1 Development of performance based technical specifications is proceeding.

3.1.2 PMO has commenced development of the Project Agreement for the Request for Proposal.

3.2 Procurement Status

3.2.1 Development of RRC RFQ document continued and remains on schedule for release in November. A new strategy for procurement is being developed due to the recent decision to not allow land application of biosolids.

3.3 Status of 3rd Party Approvals

3.3.1 Commenced alignment selection, review of pump station siting options and geotechnical investigations for Residuals conveyance to RRC.

3.4 Major Commitments This Period

3.4.1 No major commitments this period.

3.5 Schedule

3.5.1 Currently on schedule but is threatened due to the recent decision to ban land application of biosolids produced in the CRD.

3.6 Significant Issues/Decisions Pending

- **CRD:**
 - Approval of LWMP Amendment No. 9.

Seatterra Program Progress Report No. 6

- On October 30th the CRD Committee of the Whole reviewed the CRD policy prohibiting land application of resource recovery residuals. The Committee recommended that the CRD Board not change the current policy. The CRD Board ratified the recommendation. This decision potentially impacts the Program Budget and Schedule
- **Commission/PMO:**
 - A new strategy for the disposal of biosolids needs to be developed and a decision made on which approach to take based on the CRD's continued disallowance of land application of biosolids.

4. Activities – Macaulay Pump Station

4.1 Design/Engineering Status

4.1.1 Indicative design for Macaulay Point Pump Station continued.

4.2 Status of 3rd Party Approvals

4.2.1 Work continues with the DND for a License Agreement to Access Federal Real Property for working easements, utility corridors and access for construction and operations for Macaulay Pump Station.

4.3 Major Commitments This Period

4.3.1 No major commitments this period.

4.4 Schedule

4.4.1 The project is proceeding on schedule in general accordance with the detailed schedule included in Appendix B.

4.5 Significant Issues/Decisions Pending

4.5.1 No activity to report this period.

5. Activities – Craigflower Pump Station

5.1 Design/Engineering Status

5.1.1 Design is 100% complete.

5.2 Procurement Status

5.2.1 Procurement is complete.

Seaterra Program Progress Report No. 6

5.3 Construction Status

5.3.1 Construction of Craigflower Pump Station is proceeding. The Contractor has completed the sheet piling work and approximately 60% of the excavation work.

5.4 Status of 3rd Party Approvals

5.4.1 Complete.

5.5 Major Commitments This Period

5.5.1 No major commitments this period.

5.6 Schedule

5.6.1 The project is proceeding on schedule in general accordance with the detailed schedule included in Appendix B.

5.7 Significant Issues/Decisions Pending

5.7.1 None to report this period.

6. Activities – Clover Pump Station

6.1 Design/Engineering Status

6.1.1 Indicative design for Clover Point Pump Station is 95% complete.

6.2 Procurement Status

6.2.1 The RFQ to pre-qualify design-build contractors was issued on October 24th and is scheduled to close on December 17th.

6.3 Status of 3rd Party Approvals

6.3.1 Land use approvals for Clover Point Pump Station are being confirmed by the City of Victoria.

6.4 Major Commitments This Period

6.4.1 No major commitments this period.

6.5 Schedule

6.5.1 The project is proceeding on schedule in general accordance with the detailed schedule included in Appendix B.

6.6 Significant Issues/Decisions Pending

6.6.1 Information is being prepared for City of Victoria to support the approvals required for Clover Point Pump Station.

Seattera Program Progress Report No. 6

7. Activities – Currie Pump Station

7.1 Design/Engineering Status

7.1.1 Design is scheduled to commence in the 3rd quarter of 2015.

8. Activities – Arbutus Road Attenuation Tank

8.1 Design/Engineering Status

8.1.1 Conceptual design for Arbutus Road Attenuation Tank has been completed. A consultant team will be retained through a competitive process to complete the detailed design.

8.2 Procurement Status

8.2.1 Request for Proposal RFP ART-001 for Design Consultants for the Arbutus Road Attenuation Tank closed October 24th.

Proposals were received from all three previously shortlisted firms as follows:

- Associated Engineering (BC) Ltd.
- Kerr Wood Leidal Associates Ltd.
- Tetra Tech, WEI Inc.

A contract will be awarded in November.

8.3 Status of 3rd Party Approvals

8.3.1 LWMP Amendment No. 9 which includes changing the Arbutus Road Attenuation Tank size from 12,000m³ to 5,000m³ was presented to CALWMC. It was referred by CALWMC to the Technical and Community Advisory Committee for review and report back to the CALWMC at its next meeting in November.

8.4 Major Commitments This Period

8.4.1 No major commitments this period.

8.5 Schedule

8.5.1 The project is proceeding on schedule in general accordance with the detailed schedule included in Appendix B.

8.6 Significant Issues/Decisions Pending

8.6.1 None.

Seatterra Program Progress Report No. 6

9. Activities – Clover Forcemain

9.1 Design/Engineering Status

9.1.1 Work is continuing with the City of Victoria on preferred alignment for Clover Forcemain along with combined Bicycle Pathway on Dallas Road.

9.1.2 An RFQ is being prepared for Design Consulting Services for Clover Forcemain and will be issued in January 2014.

9.2 Status of 3rd Party Approvals

9.2.1 Licence Agreements for Clover Forcemain are being developed with the City of Victoria (alignment is primarily in public road rights-of-way).

9.3 Major Commitments This Period

9.3.1 No major commitments this period.

9.4 Schedule

9.4.1 The project is proceeding on schedule in general accordance with the detailed schedule included in Appendix B.

9.5 Significant Issues/Decisions Pending

9.5.1 Information is being prepared for City of Victoria to support the Licence for Clover Forcemain.

10. Activities – Currie Forcemain

10.1 Design/Engineering Status

10.1.1 Design is scheduled to commence in the 1st quarter of 2016.

11. Activities – ECI/Trent Twinning

11.1 Design/Engineering Status

11.1.1 Design is scheduled to commence in the 4th quarter of 2014.

12. Activities – Macaulay Forcemain

12.1 Design/Engineering Status

12.1.1 Design is scheduled to commence in the 2nd quarter of 2015.

Seatterra Program Progress Report No. 6

13. Program Updates

13.1 Program Cost/Budget Update

13.1.1 This report covers the period of October 2013.

13.1.2 Total program budget is \$782,686,000.

13.1.3 Costs this period are \$1,551,077.

13.1.4 Costs to date are \$21,597,448. (Appendix A)

13.1.5 Commitments to date are \$40,483,335.

13.1.6 Commitments this period are \$230,353.

13.2 Program Schedule Update

13.2.1 The Program is proceeding within the overall scheduled completion of March 2018.

13.2.2 The Program Schedule has been reviewed and updated based on current activities. See Program Schedule extracts in Appendix B of this report for:

- Critical Path Schedule
- Summary Task Schedule
- Look-ahead Schedule to January 2014

13.2.3 Major activities and Milestones achieved in October include the following:

- Continued development of the RFQ for the RRC.
- Confirmation of the Hartland site for the RRC.

13.2.4 Major activities and Milestones scheduled the next 90 days include the following:

- McLoughlin WWTP:
 - Complete rezoning process for the McLoughlin WWTP site.
 - Complete Agreements with Greater Victoria Harbour Authority (GVHA) and the Department of DND for land use and rights-of-way for the McLoughlin WWTP.
 - Receive McLoughlin WWTP DBF RFP submissions.
- Resource Recovery Centre (RRC):
 - Issue the RFQ for the RRC.
 - Confirm siting details for the RRC at Hartland.
- Conveyance Infrastructure:
 - Retain the Design Consultant for the Arbutus Road Attenuation Tank and commence design.

Seatera Program Progress Report No. 6

- Complete construction of the pump station substructure at Craigflower Pump Station.
- Issue/complete the RFQ process for Clover Pump Station and shortlist 3 proponents.
- Hold Public Open Houses for the Clover Pump Station and Clover Forcemain projects.

13.3 Procurement

13.3.1 Request for Proposal RFP ART-001 for Design Consultants for the Arbutus Road Attenuation Tank closed October 24th.

13.4 Major Commitments This Period

13.4.1 No major commitments this period.

13.5 Planning/Design/Engineering

13.5.1 The PIP has been completed and is scheduled for presentation to the Commission in November.

13.5.2 RFQ documents for Clover Pump Station DB were issued. RFQ documents for Clover Forcemain design are being prepared. RFP documents for Arbutus Road Attenuation Tank design closed.

13.6 Environmental

13.6.1 A consolidated EIS Final Report for the whole Program, except for the RRC, was completed in October. The RRC EIS will be completed within 2 months of final site selection.

13.6.2 No environmental issues to report this period.

13.7 Safety

13.7.1 One safety incident was reported. A member of the PMO office slipped and fell while attending a meeting at the Partnerships BC office in Vancouver and sustained a broken wrist. The employee returned to work the next day.

14. Communications/Public Engagement

14.1 Activities

14.1.1 Continued launch of new name/word-mark for Seatera Program and updated website.

14.1.2 Editorial Boards with media.

14.1.3 Outreach and initial Community Association meetings to discuss the RRC at Hartland.

Seaterra Program Progress Report No. 6

14.1.6 Drafting and development of materials for various upcoming public meetings.

14.1.7 Land application of biosolids technical briefing for the media.

15. Program Financing

15.1 Oversight Committee

A meeting of the Oversight Committee has been scheduled for November 20th.

15.2 Status of Funding Agreements:

No change from last report

Funding Partner	Status of agreement
Building Canada Fund	Approved in principle but awaiting Minister's signature
Green Infrastructure Fund	Approved in principle but awaiting Minister's signature
PPP Canada	Approved
Province of BC	Approved

15.3 Status of Funding Received:

No change from last report

Funding Partner	Payments Received – Current Month	Received to Date	Grant Claims Submitted	Maximum Partner Contribution
Building Canada Fund	-	-	-	\$120,000,000
Green Infrastructure Fund	-	-	-	\$50,000,000
PPP Canada	-	-	-	\$83,400,000
Province of BC	-	-	-	\$248,000,000

Seaterra Program Progress Report No. 6

Appendix A

Monthly Cost Report



**Program Summary Report
Month Ending 31-October-2013**

APPENDIX A

	<u>Budget</u>	<u>Cost to Date</u>	<u>Commitments Unpaid</u>	<u>Total CTD + CU</u>	<u>Forecast to Complete</u>	<u>Forecast at Completion</u>	<u>Variance</u>	<u>Variance from Last Report</u>
WASTEWATER TREATMENT - MCLOUGHLIN	283,653,000	9,197,939	1,631,099	10,829,038	272,823,962	283,653,000	0	0
CONVEYANCING -PUMP STATIONS & PIPES	124,425,000	5,948,353	9,844,780	15,793,133	108,631,867	124,425,000	0	0
RESOURCE RECOVERY CENTRE	255,005,000	2,528,809	5,403,181	7,931,990	247,073,010	255,005,000	0	0
COMMON COSTS	48,393,000	3,922,347	2,006,827	5,929,174	42,463,826	48,393,000	0	0
INTERIM FINANCING	27,750,000	0	0	0	27,750,000	27,750,000	0	0
PROGRAM CONTINGENCY	43,460,000	0	0	0	43,460,000	43,460,000	0	0
TOTAL	<u>782,686,000</u>	<u>21,597,448</u>	<u>18,885,887</u>	<u>40,483,335</u>	<u>742,202,665</u>	<u>782,686,000</u>	<u>0</u>	<u>0</u>

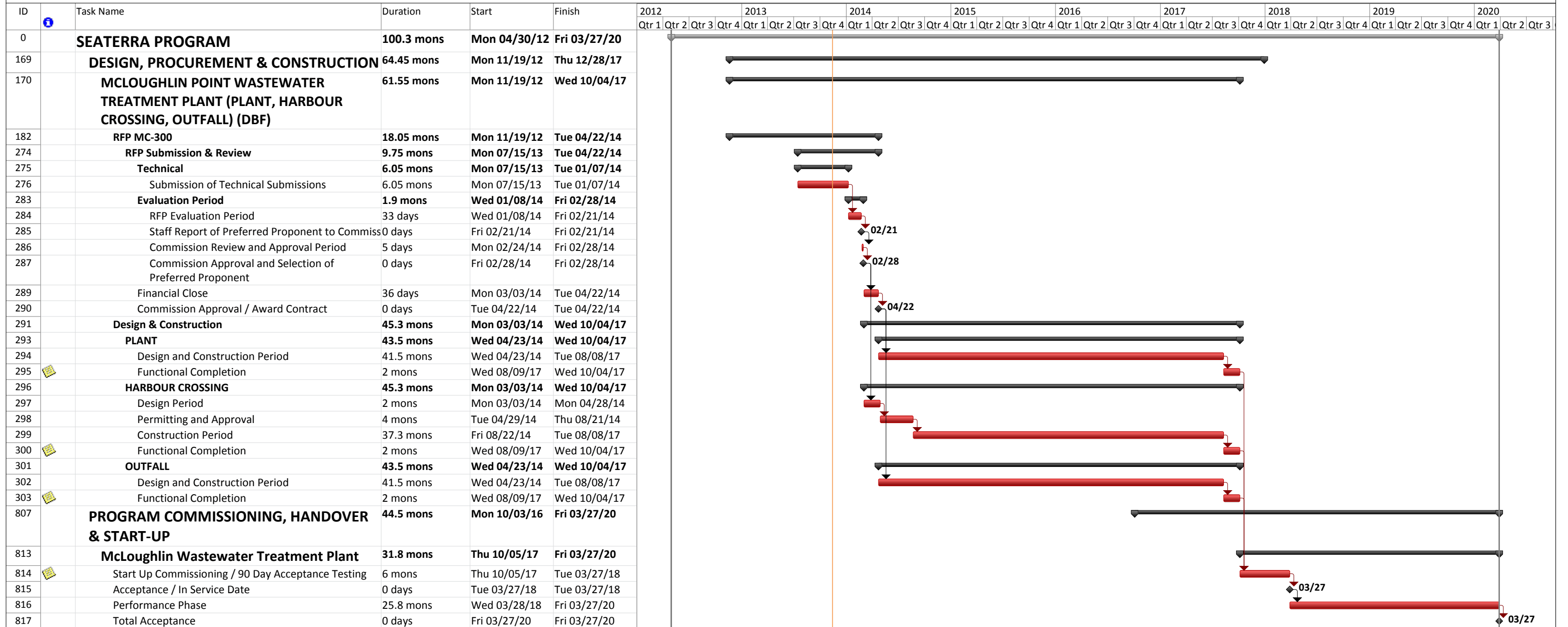
Seaterra Program Progress Report No. 6

Appendix B

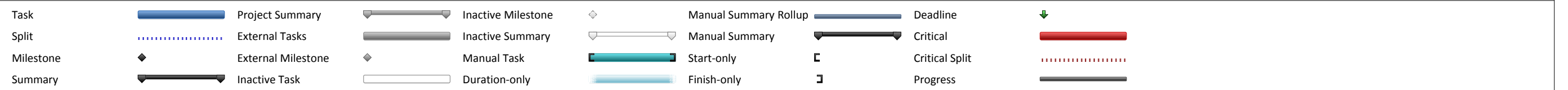
Schedule Extracts



CRITICAL PATH AS OF OCTOBER 31, 2013



Project: SEATERRA PROGRAM
Date: Thu 11/14/13





SUMMARY TASKS AS OF OCTOBER 31, 2013

ID	Task Name	Duration	Start	Finish	1st Half		2nd Half		1st Half		2nd Half		1st Half		2nd Half					
					Qtr 1	Qtr 4	Qtr 3	Qtr 2	Qtr 1	Qtr 4	Qtr 3	Qtr 2	Qtr 1	Qtr 4	Qtr 3	Qtr 2	Qtr 1	Qtr 4		
0	SEATERRA PROGRAM	100.3 mons	Mon 04/30/12	Fri 03/27/20																
1	KEY MILESTONES	74.65 mons	Mon 04/30/12	Tue 04/03/18																
15	✓ ENVIRONMENTAL	3.15 mons	Tue 12/18/12	Fri 03/15/13																
22	PROGRAM PLANS	10.2 mons	Fri 03/01/13	Fri 12/20/13																
58	✓ COMMISSION BRIEFING MATERIAL	4.6 mons	Fri 03/15/13	Fri 07/26/13																
65	ENVIRONMENTAL REMEDIATION	24.15 mons	Thu 11/15/12	Tue 10/14/14																
71	✓ DESIGN	2.4 mons	Mon 11/19/12	Fri 01/25/13																
79	LAND ISSUES	10.85 mons	Mon 04/29/13	Fri 03/07/14																
96	REZONING / STAKEHOLDER MANAGEMENT	18 mons	Wed 01/02/13	Tue 06/03/14																
113	DEVELOPMENT PERMIT APPLICATION PROCE	13.6 mons	Tue 02/26/13	Tue 03/25/14																
118	INFRASTRUCTURE WORK	12.3 mons	Fri 03/15/13	Thu 03/06/14																
124	✓ PROGRAM WIDE PROCUREMENT	6.3 mons	Fri 11/23/12	Wed 05/22/13																
168	DESIGN, PROCUREMENT & CONSTRUCTION	64.45 mons	Mon 11/19/12	Thu 12/28/17																
169	MCCLOUGHLIN POINT WASTEWATER TREATMENT PLANT (PLANT, HARBOUR CROSSING, OUTFALL) (DBF)	61.55 mons	Mon 11/19/12	Wed 10/04/17																
170	✓ RFQ MC-300	6.35 mons	Wed 01/02/13	Fri 06/28/13																
181	RFP MC-300	18.05 mons	Mon 11/19/12	Tue 04/22/14																
287	Design & Construction	43.5 mons	Wed 04/23/14	Wed 10/04/17																
293	RESOURCE RECOVERY CENTRE (DBFO)	52.5 mons	Tue 08/06/13	Wed 10/04/17																
294	RFQ	8.2 mons	Tue 08/06/13	Fri 03/28/14																
311	RFP	20.05 mons	Mon 08/26/13	Fri 03/27/15																
336	Design & Construction	31.75 mons	Mon 03/30/15	Wed 10/04/17																
339	CONVEYANCE PROJECTS	64 mons	Fri 11/30/12	Thu 12/28/17																
340	CRAIGFLOWER PUMP STATION (DBB)	22.85 mons	Fri 11/30/12	Mon 09/22/14																
373	ARBUTUS ROAD ATTENUATION TANK (DBB)	31.8 mons	Sat 02/23/13	Tue 09/01/15																
430	CLOVER PUMP STATION (DB)	40.08 mons	Mon 02/25/13	Fri 04/29/16																
483	CLOVER FORCEMAIN (DBB)	42.23 mons	Mon 03/04/13	Fri 07/08/16																
542	ECI / TRENT TWINNING (DBB)	32.35 mons	Thu 03/06/14	Thu 09/29/16																
594	MACAULAY PUMP STATION (DB)	30.05 mons	Fri 10/24/14	Tue 03/14/17																
641	MACAULAY FORCEMAIN (DBB)	30.8 mons	Mon 11/24/14	Wed 05/03/17																
699	CURRIE PUMP STATION (DBB)	24.4 mons	Fri 05/01/15	Thu 04/06/17																
744	CURRIE FORCEMAIN (DBB)	29.5 mons	Wed 08/26/15	Thu 12/28/17																
795	PROGRAM COMMISSIONING, HANDOVER & START-UP	44.5 mons	Mon 10/03/16	Fri 03/27/20																
796	Commissioning Plan	12 mons	Mon 10/03/16	Thu 09/14/17																
801	McLoughlin Wastewater Treatment Plant	31.8 mons	Thu 10/05/17	Fri 03/27/20																
807	Resource Recovery Centre	6.05 mons	Thu 10/05/17	Wed 03/28/18																

Project: SEATERRA PROGRAM Date: Tue 11/05/13	Task Summary	External Milestone	Inactive Summary	Manual Summary Rollup	Finish-only	Critical Split
	Split Project Summary	Inactive Task	Manual Task	Manual Summary	Deadline	Progress
	Milestone External Tasks	Inactive Milestone	Duration-only	Start-only	Critical	Progress



3-MONTH LOOKAHEAD FROM NOVEMBER 1, 2013 TO JANUARY 31, 2014

ID	Task Name	Duration	Start	Finish	November	December	January
0	SEATERRA PROGRAM	100.3 mons	Mon 04/30/12	Fri 03/27/20			
1	KEY MILESTONES	74.65 mons	Mon 04/30/12	Tue 04/03/18			
4	Finalize P3 Canada Definitive Financial Agreement	53.9 mons	Mon 04/30/12	Fri 04/28/17			
22	PROGRAM PLANS	10.2 mons	Fri 03/01/13	Fri 12/20/13			
23	Project Implementation Plan	10.2 mons	Fri 03/01/13	Fri 12/20/13			
26	Peer and PMO Review and Updates	71 days	Mon 07/29/13	Thu 11/07/13			
27	Commission Review	10 days	Fri 11/08/13	Fri 11/22/13			
28	Commission Approval	0 days	Fri 11/22/13	Fri 11/22/13			
29	Final Preparation & Printing	20 days	Mon 11/25/13	Fri 12/20/13			
30	Final Project Implementation Plan	0 days	Fri 12/20/13	Fri 12/20/13			
31	Project Management Plan	10.2 mons	Fri 03/01/13	Fri 12/20/13			
34	Peer and PMO Review and Updates	71 days	Mon 07/29/13	Thu 11/07/13			
35	Commission Review	10 days	Fri 11/08/13	Fri 11/22/13			
36	Commission Approval	0 days	Fri 11/22/13	Fri 11/22/13			
37	Final Preparation & Printing	20 days	Mon 11/25/13	Fri 12/20/13			
38	Final Project Implementation Plan	0 days	Fri 12/20/13	Fri 12/20/13			
39	Program Budget	9.2 mons	Fri 03/01/13	Fri 11/22/13			
43	Draft for PMO Review and Updates	47 days	Tue 09/03/13	Thu 11/07/13			
44	Commission Review	10 days	Fri 11/08/13	Fri 11/22/13			
45	Commission Approval of Program Budget Update	0 days	Fri 11/22/13	Fri 11/22/13			
50	Program Schedule	9.2 mons	Fri 03/01/13	Fri 11/22/13			
54	Draft for PMO Review and Updates	47 days	Tue 09/03/13	Thu 11/07/13			
55	Commission Review	10 days	Fri 11/08/13	Fri 11/22/13			
56	Commission Approval of Program Schedule	0 days	Fri 11/22/13	Fri 11/22/13			
65	ENVIRONMENTAL REMEDIATION	24.15 mons	Thu 11/15/12	Tue 10/14/14			
79	LAND ISSUES	10.85 mons	Mon 04/29/13	Fri 03/07/14			
81	Resource Recovery Centre Site	10.1 mons	Tue 05/21/13	Fri 03/07/14			
85	Residual Solids Pipeline and Pump Stations	103 days	Thu 10/10/13	Fri 03/07/14			
86	DND	5.25 mons	Tue 07/23/13	Fri 12/20/13			
87	Process to Finalize Agreement	105 days	Tue 07/23/13	Fri 12/20/13			
88	Access Agreement	0 days	Fri 12/20/13	Fri 12/20/13			
89	Transport Canada	7 mons	Mon 06/03/13	Fri 12/20/13			
90	Process to Finalize Draft Right of Way	140 days	Mon 06/03/13	Fri 12/20/13			
91	Draft Harbour Crossing Right of Way	0 days	Fri 12/20/13	Fri 12/20/13			
92	Victoria Harbour Authority	5.25 mons	Tue 07/23/13	Fri 12/20/13			
93	Process to Finalize Portal - Harbour Crossing - Right of Way	105 days	Tue 07/23/13	Fri 12/20/13			
94	Portal - Harbour Crossing - Right of Way	0 days	Fri 12/20/13	Fri 12/20/13			
96	REZONING / STAKEHOLDER MANAGEMENT	18 mons	Wed 01/02/13	Tue 06/03/14			
97	Program Wide Open Houses	18 mons	Wed 01/02/13	Tue 06/03/14			
98	Program Wide Public Meetings	18 mons	Wed 01/02/13	Tue 06/03/14			
102	McLoughlin	8.05 mons	Thu 04/11/13	Fri 11/29/13			
103	Rezoning Process	8.05 mons	Thu 04/11/13	Fri 11/29/13			
108	Submit Rezoning Application & Process	7.45 mons	Mon 04/29/13	Fri 11/29/13			
109	Rezoning Complete	0 mons	Fri 11/29/13	Fri 11/29/13			
113	DEVELOPMENT PERMIT APPLICATION PROCESS	13.6 mons	Tue 02/26/13	Tue 03/25/14			

Project: SEATERRA PROGRAM
Date: Thu 11/14/13

Task		Project Summary		Inactive Milestone		Manual Summary Rollup		Deadline	
Split		External Tasks		Inactive Summary		Manual Summary		Critical	
Milestone		External Milestone		Manual Task		Start-only		Critical Split	
Summary		Inactive Task		Duration-only		Finish-only		Progress	



3-MONTH LOOKAHEAD FROM NOVEMBER 1, 2013 TO JANUARY 31, 2014

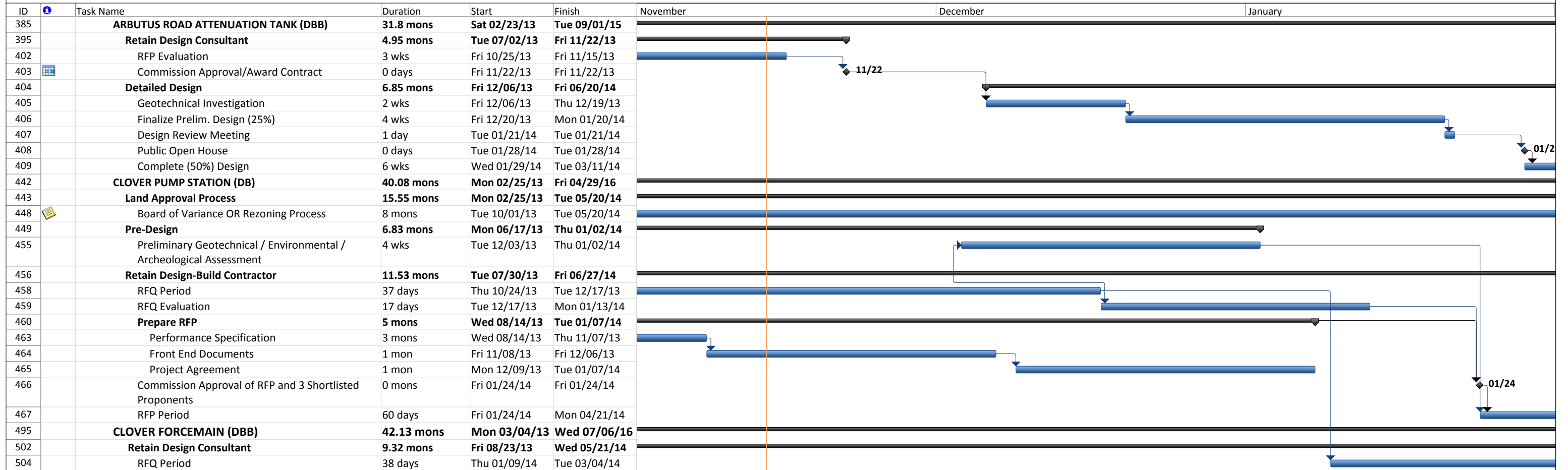
ID	Task Name	Duration	Start	Finish	November	December	January
114	McLoughlin Wastewater Treatment Plant	4 mons	Mon 12/02/13	Tue 03/25/14	[Gantt bar]		
115	Resource Recovery Centre (Rezoning & DP)	3.7 mons	Thu 10/10/13	Mon 01/27/14	[Gantt bar]		
118	INFRASTRUCTURE WORK	48.05 mons	Fri 03/15/13	Tue 01/10/17	[Gantt bar]		
119	McLoughlin Wastewater Treatment Plant	48.05 mons	Fri 03/15/13	Tue 01/10/17	[Gantt bar]		
122	Resource Recovery Centre	6 mons	Mon 09/16/13	Thu 03/06/14	[Gantt bar]		
123	Preparation of Site Servicing Technical Memorandum	6 mons	Mon 09/16/13	Thu 03/06/14	[Gantt bar]		
169	DESIGN, PROCUREMENT & CONSTRUCTION	64.45 mons	Mon 11/19/12	Thu 12/28/17	[Gantt bar]		
170	McLOUGHLIN POINT WASTEWATER TREATMENT PLANT (PLANT, HARBOUR CROSSING, OUTFALL) (DBF)	61.55 mons	Mon 11/19/12	Wed 10/04/17	[Gantt bar]		
182	RFP MC-300	18.05 mons	Mon 11/19/12	Tue 04/22/14	[Gantt bar]		
258	Issue Final Draft Project Agreement	5 days	Mon 12/09/13	Fri 12/13/13	[Gantt bar]		
265	Commercial / Collaborative Meeting #2 with Propon	0.5 mons	Tue 10/22/13	Mon 11/04/13	[Gantt bar]		
269	Capital Clear Collaborative Meeting #2	1 day	Mon 11/04/13	Mon 11/04/13	[Gantt bar]		
270	Commercial / Collaborative Meeting #3 with Propon	0.65 mons	Mon 11/18/13	Wed 12/04/13	[Gantt bar]		
271	Harbour Resource Partners Collaborative Meeting	1 day	Mon 11/18/13	Mon 11/18/13	[Gantt bar]		
272	PCL Partnerships Collaborative Meeting #3	1 day	Thu 11/21/13	Thu 11/21/13	[Gantt bar]		
273	Capital Clear Collaborative Meeting #3	1 day	Wed 12/04/13	Wed 12/04/13	[Gantt bar]		
274	RFP Submission & Review	9.75 mons	Mon 07/15/13	Tue 04/22/14	[Gantt bar]		
275	Technical	6.05 mons	Mon 07/15/13	Tue 01/07/14	[Gantt bar]		
276	Submission of Technical Submissions	6.05 mons	Mon 07/15/13	Tue 01/07/14	[Gantt bar]		
277	Financial	7.2 mons	Mon 07/15/13	Fri 02/07/14	[Gantt bar]		
279	Initial AIRS (Advance Interest Rate Submittal) Submission	55 days	Wed 10/16/13	Fri 01/03/14	[Gantt bar]		
280	Interim AIRS (Advance Interest Rate Submittal) Submission	10 days	Mon 01/06/14	Fri 01/17/14	[Gantt bar]		
281	Final AIRS (Advance Interest Rate Submittal) Submission	10 days	Mon 01/20/14	Fri 01/31/14	[Gantt bar]		
283	Evaluation Period	1.9 mons	Wed 01/08/14	Fri 02/28/14	[Gantt bar]		
284	RFP Evaluation Period	33 days	Wed 01/08/14	Fri 02/21/14	[Gantt bar]		
305	RESOURCE RECOVERY CENTRE (DBFO)	52.5 mons	Tue 08/06/13	Wed 10/04/17	[Gantt bar]		
306	RFQ	8.2 mons	Tue 08/06/13	Fri 03/28/14	[Gantt bar]		
309	Data Room - Reference Documents Compiled	26 days	Mon 10/07/13	Wed 11/13/13	[Gantt bar]		
310	Funding Agency Review (P3)	3 wks	Fri 10/25/13	Fri 11/15/13	[Gantt bar]		
314	CALWMC / Board Review	0 days	Wed 11/13/13	Wed 11/13/13	[Gantt bar]		
315	RFQ Issued	0 days	Fri 11/15/13	Fri 11/15/13	[Gantt bar]		
316	RFQ Closed	48 days	Mon 11/18/13	Fri 01/24/14	[Gantt bar]		
317	Evaluate RFQ & Shortlist	30 days	Mon 01/27/14	Fri 03/07/14	[Gantt bar]		
323	RFP	20.05 mons	Mon 08/26/13	Fri 03/27/15	[Gantt bar]		
324	Indicative Design	12 wks	Mon 08/26/13	Wed 11/20/13	[Gantt bar]		
325	RFP Preparation, Plus Project Agreement and Schedu	20 wks	Tue 09/24/13	Fri 02/14/14	[Gantt bar]		
351	CONVEYANCE PROJECTS	64 mons	Fri 11/30/12	Thu 12/28/17	[Gantt bar]		
352	CRAIGFLOWER PUMP STATION (DBB)	22.85 mons	Fri 11/30/12	Mon 09/22/14	[Gantt bar]		
368	Construction Period	15.3 mons	Thu 07/04/13	Mon 09/22/14	[Gantt bar]		
373	Sheet Piling/Excavation	3 mons	Wed 09/18/13	Thu 12/12/13	[Gantt bar]		
374	Trenchless Crossing	1.5 mons	Wed 10/02/13	Thu 11/14/13	[Gantt bar]		
375	Forcemain & Sewer Install	2.5 mons	Thu 10/31/13	Mon 01/13/14	[Gantt bar]		
376	Substructure	2.5 mons	Fri 12/13/13	Mon 02/24/14	[Gantt bar]		

Project: SEATERRA PROGRAM
Date: Thu 11/14/13

Task		Project Summary		Inactive Milestone		Manual Summary Rollup		Deadline	
Split		External Tasks		Inactive Summary		Manual Summary		Critical	
Milestone		External Milestone		Manual Task		Start-only		Critical Split	
Summary		Inactive Task		Duration-only		Finish-only		Progress	



3-MONTH LOOKAHEAD FROM NOVEMBER 1, 2013 TO JANUARY 31, 2014



Project: SEATERRA PROGRAM Date: Thu 11/14/13	Task		Project Summary		Inactive Milestone		Manual Summary Rollup		Deadline	
	Split		External Tasks		Inactive Summary		Manual Summary		Critical	
	Milestone		External Milestone		Manual Task		Start-only		Critical Split	
	Summary		Inactive Task		Duration-only		Finish-only		Progress	