

# Backgrounder

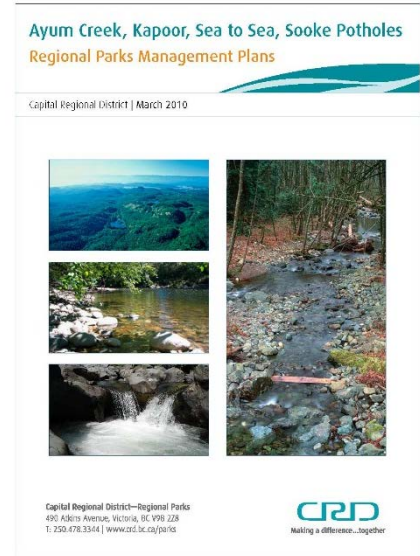
## Sea to Sea Traditional Use and Access Agreement

### History

The lands that make up Sea to Sea Regional Park are within the traditional territory of T'Sou-ke Nation. Aboriginal and treaty rights of T'Sou-ke Nation are protected by s. 35 of the *Constitution Act*, 1982.

T'Sou-ke Nation and the CRD entered into a Memorandum of Understanding in 2008, in which they agreed to work together to establish a government-to-government relationship and develop agreements in identified areas of interest, including CRD parklands, CRD water supply lands, heritage sites and cultural protection and traditional, and sustainable land uses.

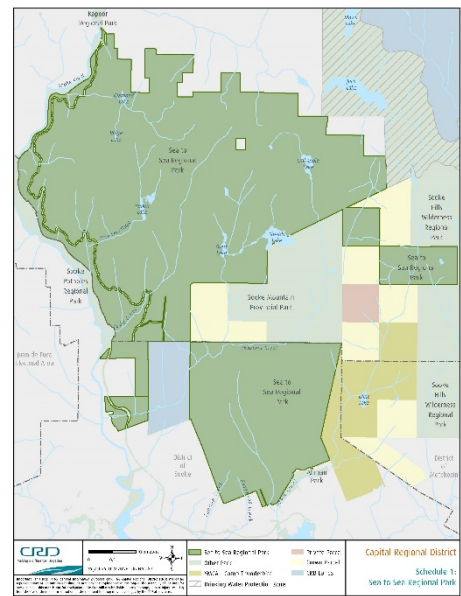
The 2010 Board-approved [management plan](#) for Sea to Sea Regional Park committed that the "CRD Regional Parks will work with the T'Sou-ke Nation to address issues of mutual interest such as access and harvesting rights, identification and management of sacred sites and features, and involvement in park interpretive programming."



### Highlights of the Agreement

The Agreement recognizes the importance of the wilderness character of Sea to Sea Regional Park, and the park's significance to protecting the natural environment for the plants and animals that rely on the park for their continued existence. It acknowledges the long-term commitment by the CRD to preserve the park.

Decisions about how best to manage the environmental effects of access to the lands for traditional uses and outdoor recreation are addressed through the establishment of a joint Parks Operations Management Committee. Through this committee, decisions will be made that meet the parties' interests for conservation and use. Guiding such decisions will be the application of two systems of knowledge: traditional ecological knowledge and western sciences.



Underpinning decision-making is an ecosystem-based management approach that recognizes that all things are connected and that conservation and public safety are preminent in operational decision-making.

Park visitors will benefit from increased information about the cultural significance of the park's lands and how traditional ecological knowledge and western sciences, both natural and social, are working together to protect the lands and waters that make up the park.

### About the Park

Sea to Sea Regional Park lands are being opened to the public in phases (2017-2019). The Mount Manuel Quimper section opened in 2017. Phase two confirms trails to the lakes in the north part of the park, as well as the development of a backcountry camping area. Phase three builds and connects east-west trails to Sooke Hills Wilderness Regional Park.



Sea to Sea Regional Park is the second largest in the regional parks system and encompasses almost 4,000 hectares. The park offers outstanding outdoor wilderness recreation opportunities for visitors.

It features:

- 30 kilometres of designated hiking, mountain biking and equestrian trails
- Wide range of large mammal and plant species
- Views from the peaks of Mount Manuel Quimper and Mount Brule