

# BEAUTY AND THE ENVIRONMENT

Today's salons offer a wide range of services – from hair styling and skin treatments to tanning, manicures, and make-up application. In providing these services, waste is generated. In many cases, this waste goes into the sanitary sewer system, where it can have a negative impact on the environment.

There are, though, a number of steps you can take to reduce the impact your business has on the environment. This brochure outlines some “Best Management Practices” – simple things that you can do to ensure that while you're making your clients beautiful, you're doing your part to keep the Victoria area beautiful, too.



## What are Best Management Practices?

Best Management Practices, also known as BMPs, are proactive, practical techniques that help industries reduce pollution at the source. Some BMPs suggest new ways to accomplish everyday tasks; others offer alternatives to help reduce the use of hazardous products; still others recommend ways to do more with less – helping you save money and the environment. All BMPs help businesses operate as cleanly and responsibly as possible.



## Why should hair salons and estheticians use Best Management Practices?

The work done in hair salons and by estheticians can lead to a number of environmental issues. The most pressing stem from

- the use of chemicals
- the use of water and the disposal of used wastewater
- the generation of solid waste

If your business is small, you may not think that your own efforts can make a difference. But with hundreds of salons and spas operating throughout the Capital Region, the cumulative effect of Best Management Practices can be very significant. So each time you put a BMP into action, you're helping to keep the Capital Region clean, with less polluted waterways, healthier wildlife, and a safer environment for us all to enjoy.

### What Best Management Practices can I adopt?

There are many Best Management Practices that can help you limit your use of chemicals, minimize your water usage, and control how much trash you produce.

#### 1. Limiting Chemicals

Some hazardous products you may use regularly include bleaches, perming solutions, hair dyes, straighteners, disinfectants, peroxides, solvents, and cleaning agents. Others that are perhaps less obviously hazardous but that can also pose problems include nail and skin care products, shampoos, hair supplements, and styling agents.

The following BMPs can help you manage these chemicals better:

#### **BMP #1: Trade in some of your hazardous products for more natural, less harmful ones.**

##### **Avoid these:**

- shampoos and dyes that contain coal tar derivatives
- shampoos with artificial fragrances or colours, formaldehyde, or paraben preservatives
- permanent colours
- perm solutions that contain triethanolamine (TEA), diethanolamine (DEA), or monoethanolamine (MEA)
- all products that contain heavy metals, like lead and selenium

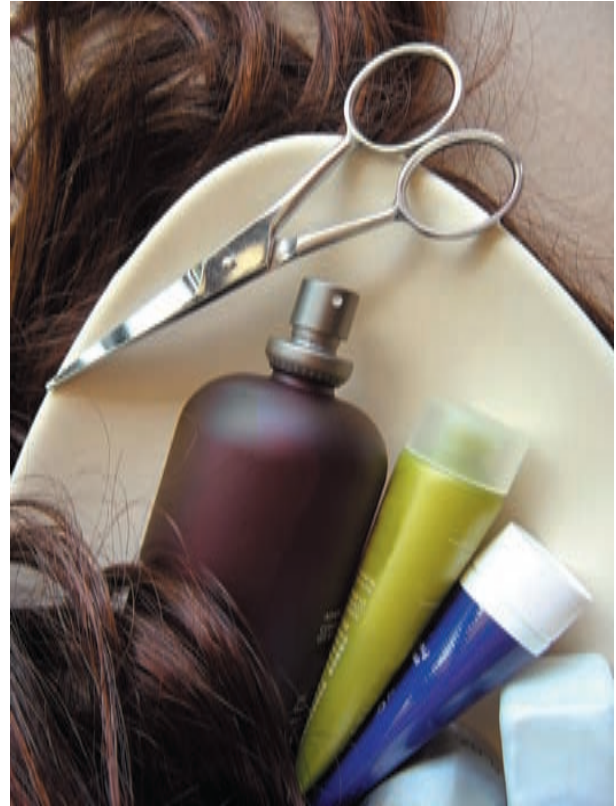
##### **And try these:**

- enzyme-based shampoos and hair products
- henna or vegetable dyes
- semi- or demi-permanent, non-ammoniated colours

#### **BMP #2: Limit the amount of chemicals you use.**

When using chemical products, mix only what you need. Use funnels and drip trays to capture any excess, then reuse what you recover. Further minimize waste by applying products in small amounts by hand.

And save money and reduce waste by purchasing products with longer shelf lives so you're not forced to throw away excess amounts.



#### **BMP #3: Don't pour disinfectants down the drain.**

After use, products like Barbersol are usually poured down the drain. From there, they enter the sewer system and compromise the quality of our marine environment. Try using ammonia- or alcohol-based sprays for disinfecting your tools instead; you'll use less, and they won't end up in the sewer. Also consider using disinfectants that utilize UV light. And post signs near sinks to remind staff that disinfectants and other chemicals shouldn't be poured down the drain.

#### **BMP #4: Protect yourself from hazardous materials.**

When dealing with new products, check Material Safety Data Sheets and read labels. They may recommend important precautions such as wearing gloves or aprons, or working in well-ventilated areas.

### **BMP #5: Find alternatives to aerosols.**

Use gels and lotions instead of aerosol mousses and sprays. Use pump dispensers in place of aerosol containers.

### **BMP #6: Avoid product spills.**

Seal containers tightly to prevent harmful odours from escaping and to avoid drips and spills. When you do spill a product, clean it up immediately. Use a dry method (a paper towel, for instance), rather than rinsing the spill away. That way, chemicals won't end up in the sewer system.

### **BMP #7: When you clean, go green.**

If you use more elbow grease in your cleaning routines, you'll be able to rely on fewer chemicals. Also try environmentally friendly cleaners such as ammonia, borax, and baking soda or seek out biodegradable products such as those that are Green Seal-certified or that carry the Eco Logo.

## **2. Saving Water**

Water is an important resource. So it's environmentally wise – and business savvy – to reduce your usage whenever possible.

The following BMPs can help:

### **BMP #8: Consider installing water reduction devices.**

Flow restrictors and aerators may help you use less water.

### **BMP #9: When feasible, use cold water instead of hot.**

### **BMP #10. Turn off the taps between tasks.**

By running water only when you're actually using it, you'll save significant amounts. Also ask staff to report leaks immediately, then have them fixed as soon as possible. While you're at it, ensure all your sinks are equipped with hair traps so that your drains – and sewer lines – won't get blocked.

## **3. Minimizing Solid Waste**

You can make huge strides environmentally simply by reducing the amount of trash your business produces.

The following BMPs will set you on the right path:

### **BMP #11: Purchase products with less packaging.**

Choose products made of recycled materials and those packaged in recyclable containers. Ask your suppliers to provide their products in refillable containers. Some suppliers will even pick up – and later reuse – your empty bottles and jars when they make their deliveries.

### **BMP #12: Completely empty containers before discarding them.**

Ensure you use every last drop: you'll save money and generate fewer bottles.

### **BMP #13: Recycle.**

Rinse, then recycle all those glass and plastic containers. And don't forget about the other recyclables your business generates; office paper, magazines, newspaper, and cardboard should all be recycled, too. For more information on recycling, visit [www.crd.bc.ca/es/recycle/index.htm](http://www.crd.bc.ca/es/recycle/index.htm).

### **BMP #14: Limit use of paper towels.**

Use cloth towels whenever possible, and install high-efficiency hand dryers in wash-up areas.



## **The CRD Regional Source Control Program**

**Working to ensure higher-quality industrial wastewater, a cleaner ocean, and a healthier environment for all Capital Region residents.**

The Regional Source Control Program helps enforce the CRD's Sewer Use Bylaw by educating businesses on how they can minimize the amount of contaminants that are released into the sanitary sewer system. Left unchecked, these contaminants end up in our local waters, where they threaten fisheries, harm wildlife, and endanger public health.

Best Management Practices, like those suggested in this brochure, are one way the CRD works with business to keep our environment clean.

### **Remember: you play a vital role.**

By following these BMPs, your business will decrease waste, reduce disposal costs, increase efficiency, and limit liability – while protecting our environment.



For more information on the CRD Regional Source Control Program, contact us at [rscp@crd.bc.ca](mailto:rscp@crd.bc.ca) or (250) 360-3256.

For answers to specific questions about waste management, contact the CRD Hotline at [hotline@crd.bc.ca](mailto:hotline@crd.bc.ca) or (250) 360-3030.

To learn more about CRD Environmental Services programs and regulations, visit the CRD website at

[www.crd.bc.ca](http://www.crd.bc.ca)



**Environmental Services**

625 Fisgard Street PO Box 1000  
Victoria BC V8W 2S6