

# Peninsula Sub-Regional Profile



The Peninsula Sub-region is situated in the northeast part of the Capital Region, extending from Saanich Inlet to the west, Sidney Channel to the east and bordering on Saanich to the south.

The Peninsula Sub-region includes: Central Saanich, North Saanich and Sidney. Where possible, the information supplied includes the four First Nations Reserves.

Peninsula Sub-region				Five-Year Growth Rate 1996-2001	Five-Year Growth Rate 2001-2006	Average Annual Growth Rate 2001-2006	Percent of CRD Total 2006
	1996	2001	2006				
Population	37,449	39,085	40,460	4.4%	3.5%	0.7%	11.7%
Dwellings*	15,040	15,990	16,750	6.3%	4.8%	1.0%	11.0%
Employment	12,995	15,680	17,605	20.7%	12.3%	2.5%	10.8%
Average Persons/Household	2006		Average Household Income**	1995	2000	2005	
	2.3			\$58,457	\$66,651	\$78,833	

Central Saanich				Five-Year Growth Rate 1996-2001	Five-Year Growth Rate 2001-2006	Average Annual Growth Rate 2001-2006	Percent of CRD Total 2006
	1996	2001	2006				
Population	14,611	15,348	15,745	5.0%	2.6%	0.5%	4.6%
Dwellings*	5,440	5,925	6,245	8.9%	5.4%	1.1%	4.1%
Employment	5,015	6,505	7,890	29.7%	21.3%	4.3%	4.8%
				Average Household Income**	1995	2000	2005
					\$62,343	\$69,461	\$79,345

North Saanich				Five-Year Growth Rate 1996-2001	Five-Year Growth Rate 2001-2006	Average Annual Growth Rate 2001-2006	Percent of CRD Total 2006
	1996	2001	2006				
Population	10,411	10,436	10,823	0.2%	3.7%	0.7%	3.1%
Dwellings*	3,915	4,085	4,275	4.3%	4.7%	0.9%	2.8%
Employment	2,640	3,865	3,900	46.4%	0.9%	0.2%	2.4%
				Average Household Income**	1995	2000	2005
					\$70,196	\$81,989	\$102,703

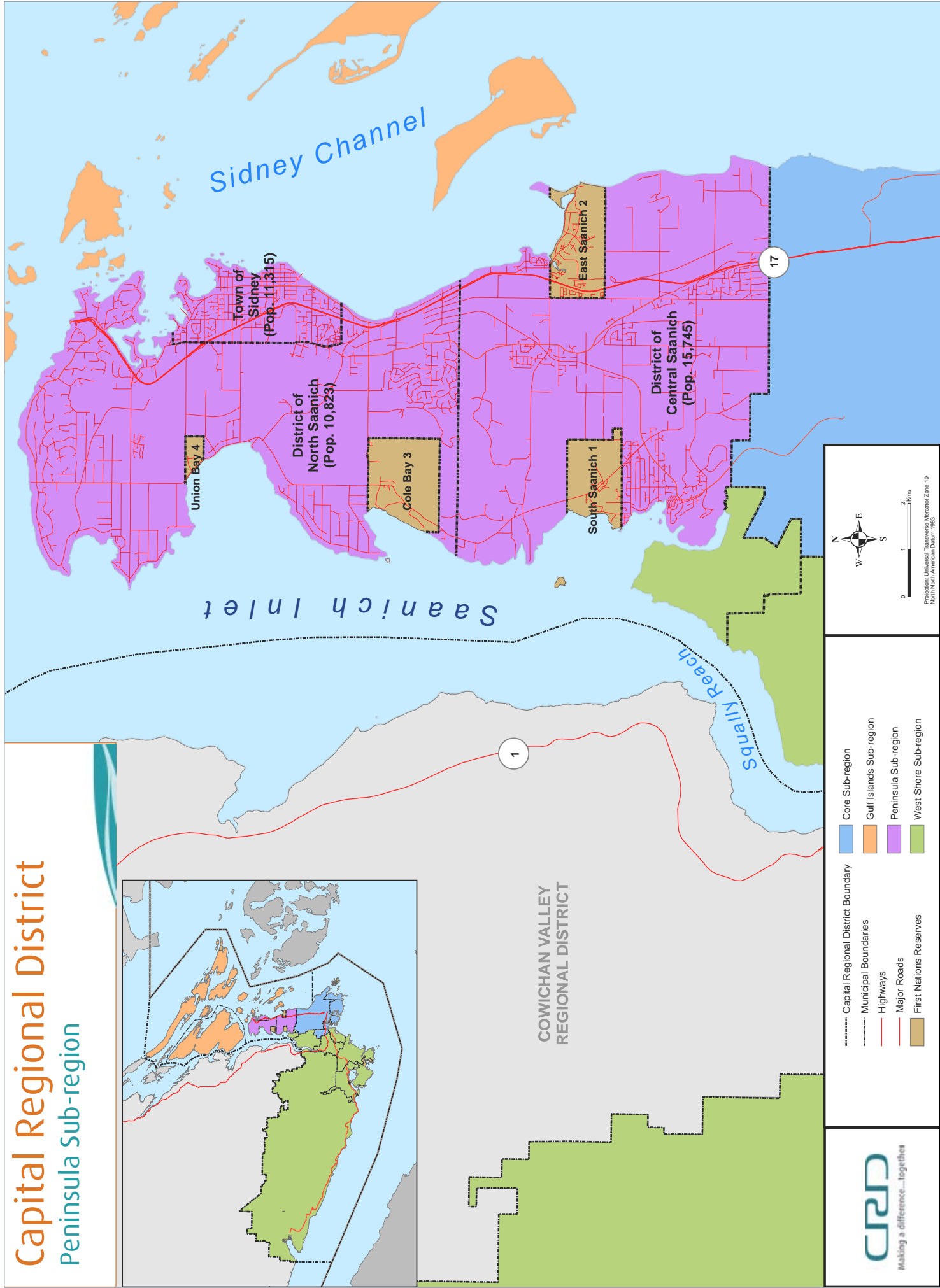
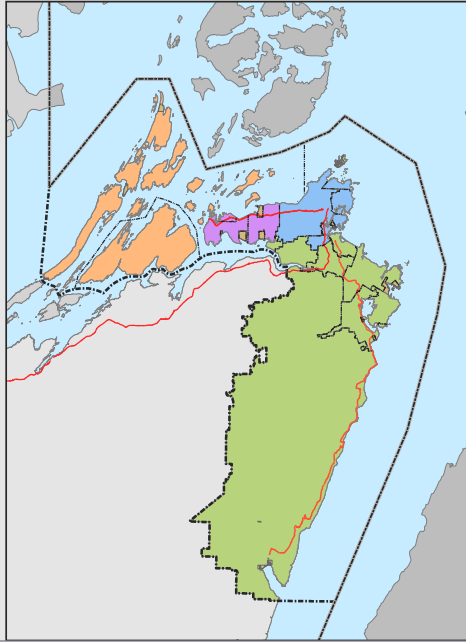
Sidney				Five-Year Growth Rate 1996-2001	Five-Year Growth Rate 2001-2006	Average Annual Growth Rate 2001-2006	Percent of CRD Total 2006
	1996	2001	2006				
Population	10,701	10,929	11,315	2.1%	3.5%	0.7%	3.3%
Dwellings*	4,985	5,045	5,195	1.2%	3.0%	0.6%	3.4%
Employment	4,980	4,920	5,540	-1.2%	12.6%	2.5%	3.4%
				Average Household Income**	1995	2000	2005
					\$45,001	\$50,934	\$58,575

\* Occupied Private

\*\* Before Tax (current year dollars)

# Capital Regional District

## Peninsula Sub-region



Projection: Universal Transverse Mercator Zone 10  
North North American Datum 1983

**Legend:**

- Capital Regional District Boundary
- Municipal Boundaries
- Highways
- Major Roads
- First Nations Reserves
- Core Sub-region
- Gulf Islands Sub-region
- Peninsula Sub-region
- West Shore Sub-region

Making a difference...together