

Capital Regional District

Regional Parks and Trails, Protected Areas, and Provincial Recreation Sites



Making a difference...together

- Regional Park
- Other Park
- CRD Water Supply Land
- Tanky Off Road Vehicle Area
- First Nations Reserve
- Western Forest Product Lands to be Acquired for Parkland
- Kludahk / San Juan Ridge Provincial Recreation Trail
- Provincial Recreation Tourist Site
- Regional Trail
- Proposed E & N Regional Trail
- Regional District Boundary
- Municipal / Electoral Area Boundary
- River / Stream
- Lake / Reservoir

0 2.5 5 10 15

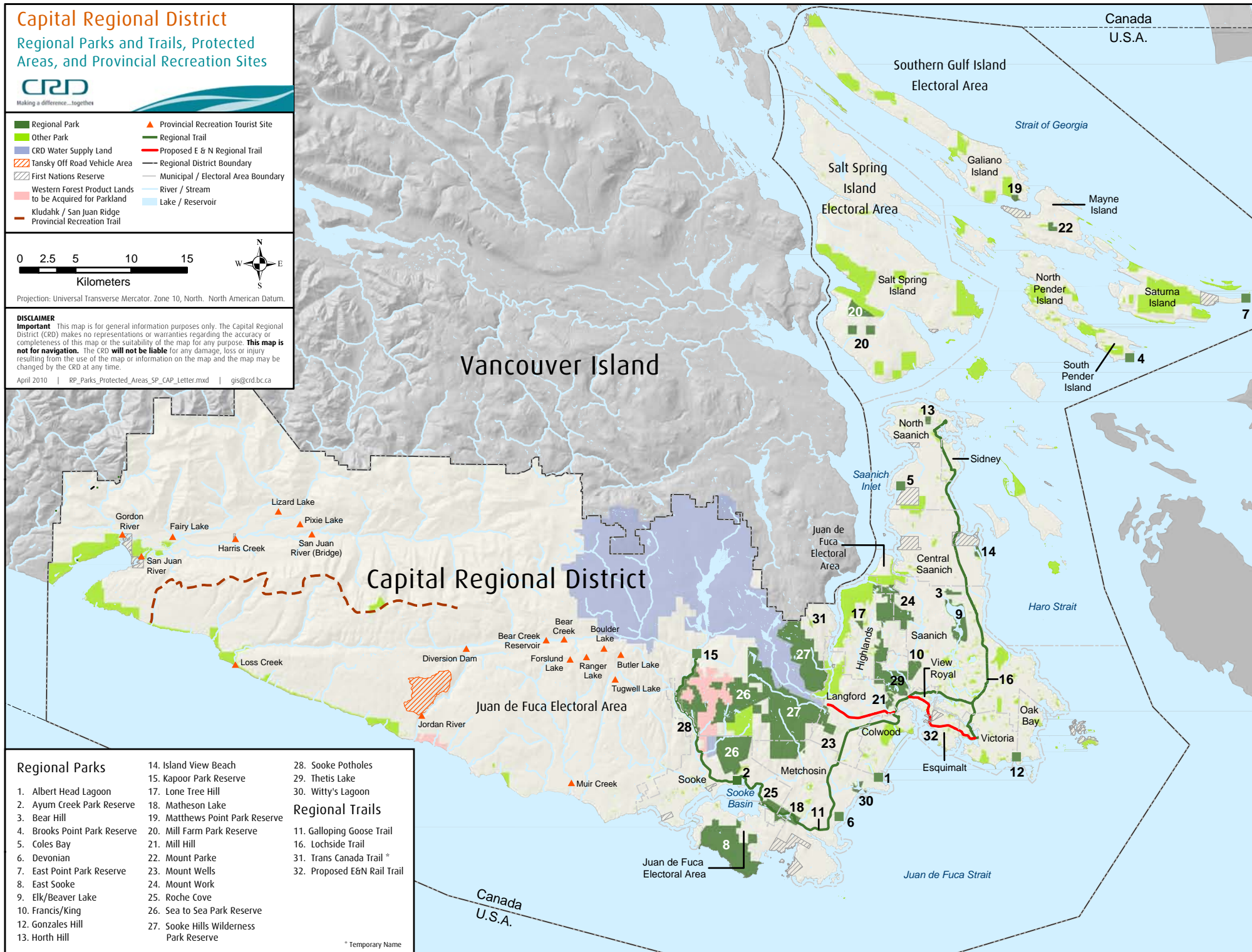
Kilometers



Projection: Universal Transverse Mercator, Zone 10, North, North American Datum.

DISCLAIMER
Important This map is for general information purposes only. The Capital Regional District (CRD) makes no representations or warranties regarding the accuracy or completeness of this map or the suitability of the map for any purpose. **This map is not for navigation.** The CRD **will not be liable** for any damage, loss or injury resulting from the use of the map or information on the map and the map may be changed by the CRD at any time.

April 2010 | RP_Parks_Protected_Areas_SP_CAP_Letter.mxd | gis@crd.bc.ca



Regional Parks

- | | |
|------------------------------|-----------------------------------------|
| 1. Albert Head Lagoon | 14. Island View Beach |
| 2. Ayum Creek Park Reserve | 15. Kapoor Park Reserve |
| 3. Bear Hill | 17. Lone Tree Hill |
| 4. Brooks Point Park Reserve | 18. Matheson Lake |
| 5. Coles Bay | 19. Matthews Point Park Reserve |
| 6. Devonian | 20. Mill Farm Park Reserve |
| 7. East Point Park Reserve | 21. Mill Hill |
| 8. East Sooke | 22. Mount Parke |
| 9. Elk/Beaver Lake | 23. Mount Wells |
| 10. Francis/King | 24. Mount Work |
| 12. Gonzales Hill | 25. Roche Cove |
| 13. Horth Hill | 26. Sea to Sea Park Reserve |
| | 27. Sooke Hills Wilderness Park Reserve |

Regional Trails

- | |
|-----------------------------|
| 11. Galloping Goose Trail |
| 16. Lochside Trail |
| 31. Trans Canada Trail * |
| 32. Proposed E&N Rail Trail |

* Temporary Name