

# Restoring Your Regional Parks

Information Sheet #2

October 2005

## Mill Hill Regional Park Garry Oak Ecosystem Restoration Project

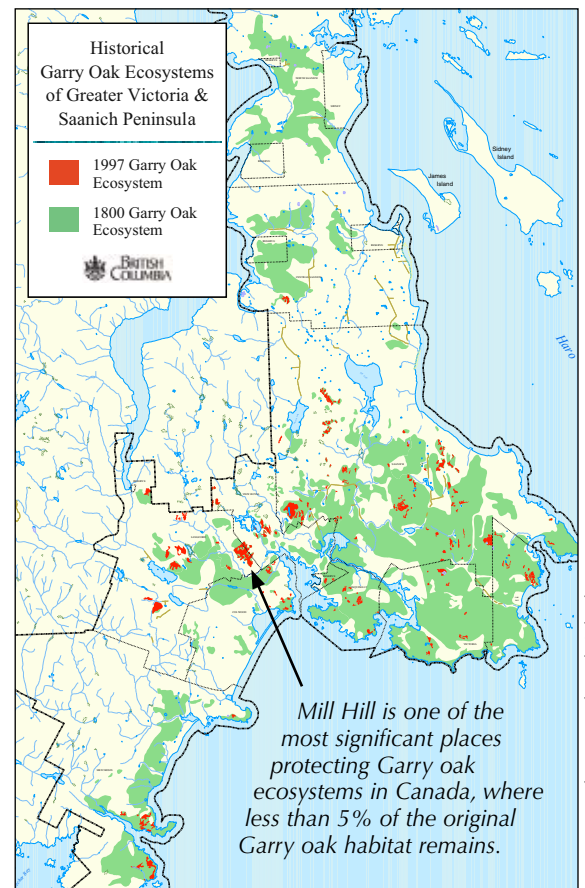
Mill Hill Regional Park is a special place, and CRD Parks is working hard to ensure the things that make it special will be around for years to come.

Up on the hill above the conifer forest are about 20 hectares of Garry oak ecosystems. The map on the right shows the original extent of these ecosystems on southeastern Vancouver Island and the Gulf Islands (before European settlement) and the small fragments that exist today. Every remnant patch, especially a large one such as that on Mill Hill, is a treasure worth protecting.

Garry oak ecosystems are beautiful places. If you've been up Mill Hill in the spring, you've no doubt seen the stunning carpets of wildflowers, such as camas and satinflower. But did you know that Garry oak ecosystems are home to more than 100 species of rare and endangered plants and animals? So far, we have found 14 species of rare plants and one rare butterfly living at Mill Hill.

You may wonder what we mean by protection of species and ecosystems. After all, Mill Hill is a park—isn't everything in the park already protected? Well, designating parkland is only the first step on the road to protecting these special places. Other things also need to be done. For example, a number of plant species that are not native to our region are now spreading aggressively and displacing native species. At Mill Hill Regional Park, we are removing Scotch broom and daphne, two of these invasive shrub species. This work began in 2002, and we can already see remarkable changes each year as we cover more ground. Why don't you take a wander up the hill and see for yourself?

If you are interested in helping CRD Parks restore and maintain these important Garry oak ecosystems over the long term, please contact us at 478-3344.



*Distribution of Garry oak ecosystems in 1997 compared to 1800*



*Shootingstars in restored area at Mill Hill Regional Park*

## Help Protect This Sensitive Habitat

Please stay on designated trails and keep pets on the trails.

*It's all in how and when you do it.*

*Pulling large broom or daphne plants in sensitive habitats can cause damage to thin soils and wildflowers.*

*CRD Parks has researched the best methods for removing broom. If you would like to help our restoration project, please call us at 478-3344.*

*Please do not remove plants on your own.*



Volunteer working in restoration area



Mill Hill project team accepts Forest Stewardship Award from Wildlife Habitat Canada

In May 2005, CRD Parks received a Forest Stewardship Award from Wildlife Habitat Canada for efforts to restore and protect rare native plants in Mill Hill Regional Park. The Forest Stewardship Recognition Program recognizes outstanding stewardship of Canada's forests.



CRD Parks staff roll a bundle of Scotch broom for removal by helicopter



Regional Parks

CAPITAL  
REGIONAL  
DISTRICT

490 Atkins Avenue  
Victoria BC V9B 2Z8  
T 250.478.3344 | F 250.478.5416  
www.crd.bc.ca/parks

### Our Partners



Garry Oak  
Ecosystems  
Recovery Team



The Habitat Stewardship Program  
of the Government of Canada

# Thank you for your interest in CRD Parks!