

Regional Parks Land Acquisition Fund

Summary of 2008 Acquisitions



Capital Regional District | Regional Parks



In April 2000, the Capital Regional District Board established the Regional Parks Land Acquisition Fund. The ten-year fund generates about \$1,700,000 per year to purchase land for regional parks and trails identified by the public and documented in the Regional Parks Master Plan. The Master Plan is a vision for the future of the regional parks and trails system.

The establishment of the fund was supported by the public in an opinion poll that was held in several municipalities during the 1999 municipal elections. The cost to property owners in the CRD for the fund in 2008 was \$1.92 per \$100,000 assessed residential property value, or \$10 per average residential household value.

Prior to 1999, Regional Parks purchased land by borrowing money. Regional Parks is still paying for these purchases. The total debt requisition in the 2008 Regional Parks budget was \$605,060. This debt will be paid off in 2012.

A summary of land acquisition revenue and expenditures from January 1 to December 31, 2008 is provided in the tables in this bulletin. A summary of the 2008 acquisitions is also provided.

(Left photo proposed Trans Canada Trail route)



Table 1. Summary of 2008 Acquisitions

Area	Year Acquired	Location	Area (Hectares)	Acquisition Value	Expenditures	
					Regional Parks' Contribution	Partners' Contribution
Trans Canada Trail - land dedication	2008	Juan de Fuca Electoral Area north of Sooke Hills Wilderness Regional Park Reserve	7.6	n/a	n/a	n/a
Mount Work Regional Park	2008	District of Highlands	130	\$4,332,000	\$500,000	\$3,832,000
TOTAL			137.6	\$4,332,000	\$500,000	\$3,382,000

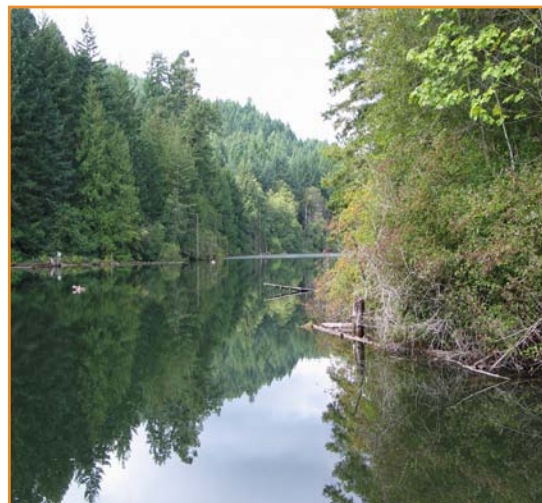
2008 Acquisitions

In 2008, Regional Parks acquired land in two areas: (1) two parcels of land were added to the west boundary of Mount Work Regional Park; and (2) a 3 kilometre strip of land north of Sooke Hills Wilderness Regional Park Reserve was added as a trail corridor for the proposed Trans Canada Trail link to the Cowichan Valley Regional District.

Table 2. 2008 Land Acquisition Revenue and Expenditures

2008 Revenue	
Prior Year Carry-over	\$ 83,922
Annual Requisition	\$ 1,663,530
Accrued Interest	\$ 2,226
Total 2008 Revenue	\$ 1,749,678
2008 Expenditures	
*Associated Land Acquisition Costs	\$ 1,882
Short-Term Loan Payment	\$ 1,552,530
Interest on Short-Term Loan	\$ 58,313
Total 2008 Expenditures	\$ 1,612,725
Balance of 2008 Regional Parks Land Acquisition Fund (carry forward to 2009)	\$ 136,953

* This includes costs for land value appraisals, legal services, property taxes, surveying, acquisition negotiations, land title fees and development costs.



Durrance Lake - Mount Work

Table 3. 2009 Land Acquisition Financial Commitments by Regional Parks

2009 Revenue		2009-Year 10
Prior Year Carry-over	\$	136,953
Annual Requisition	\$	1,682,851
TLC Contribution for TimberWest Acquisition	\$	250,000
Total 2009 Revenue	\$	2,069,804
2009 Expenditures		
Proposed Acquisition Expenses	\$	20,000
Contribution to TLC for Purchase of Property in Highlands	\$	500,000
Principal-Long Term Debt (TimberWest Lands)	\$	847,470
Interest on Long Term Debt	\$	34,000
Transfer to Capital Reserve	\$	250,000
Total 2009 Expenditures	\$	1,651,470
Estimated Funds Available for Parkland Acquisition	\$	418,334

*NOTE: Four residential lots have been listed for the past 18 months. There have been no sales to date.



Mount Work Trail

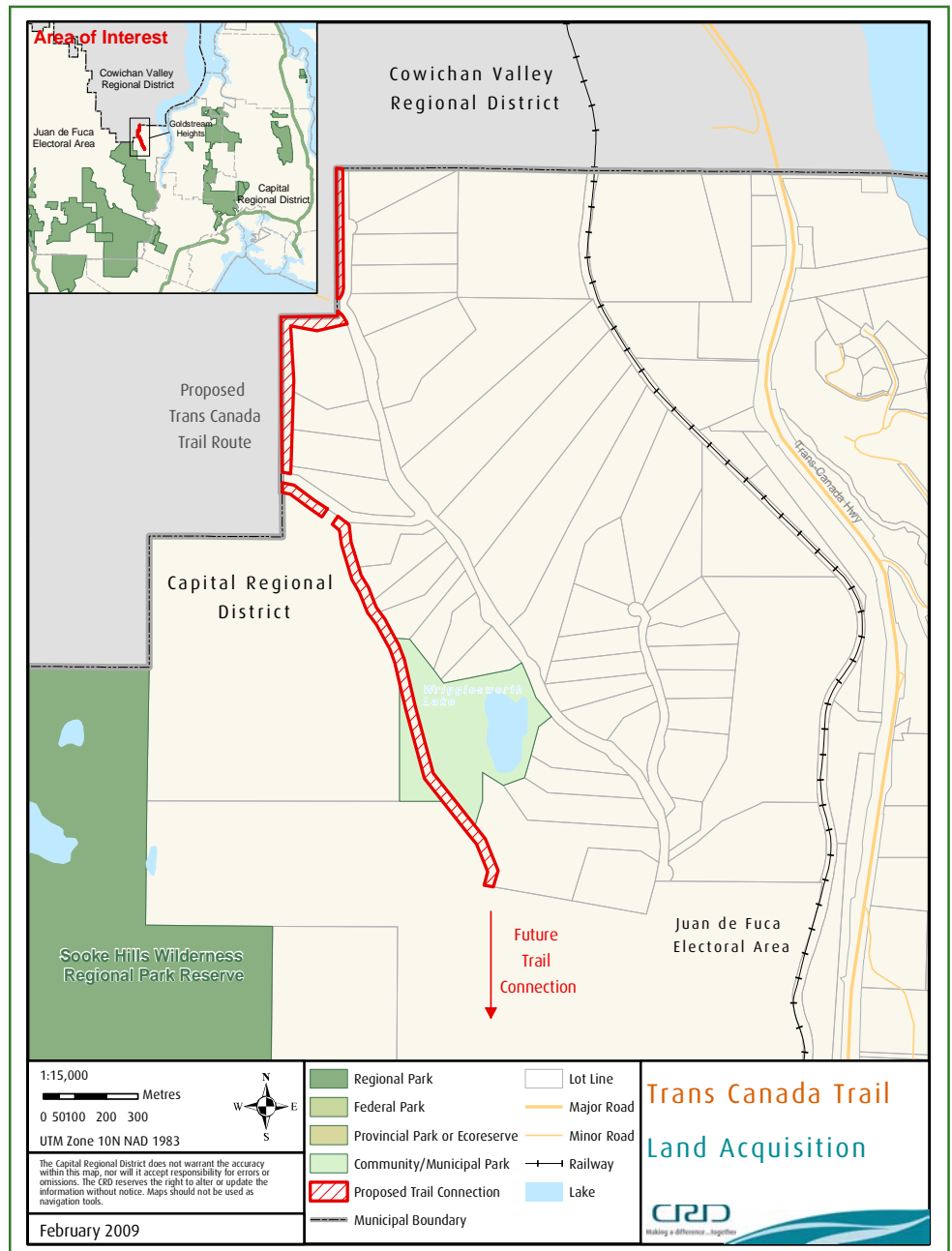


View from proposed TCT route

Trans Canada Trail Addition

CRD Regional Parks acquired a 3 kilometre strip of land north of Sooke Hills Wilderness Regional Park Reserve as a trail corridor to help complete a Trans Canada Trail (TCT) link to the Cowichan Valley Regional District (CVRD). This corridor, acquired as part of the development of adjacent land, connects directly with land already secured in the CVRD for the trail. The linear strip of land varies in width from 20 to 40 metres to allow flexibility in building the trail through challenging terrain. The total area of the strip is 7.6 hectares. The amount of trail remaining within CRD to be acquired for a complete link to the CVRD is now only 750 metres.

The land acquired has spectacular views of Finlayson Arm, the Gulf Islands, Mount Baker and the Olympic Mountains. The route also passes through a CRD-owned parcel of land that contains Wigglesworth Lake, which is currently managed as a Juan de Fuca Electoral Area community park. Once all the land acquisition in the CRD and the CVRD is complete, design and engineering for the entire TCT on Southern Vancouver Island from Langford to Shawnigan Lake can begin. Construction of the trail would follow and this would be subject to budget approval.



Land Acquisitions 2000 to 2008

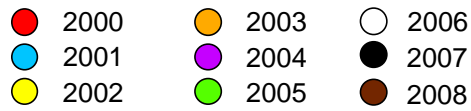
Since the establishment of the Land Acquisition Fund in 2000, Regional Parks, with its partners, has purchased \$27,800,000 of land. Regional Parks has contributed \$17,250,000 (62%) and partners have contributed 10,550,000 (38%). The target established in the Land Acquisition Strategy for the financial contribution of Regional Parks and its partners to land acquisition was Regional Parks 65% and partners 35%. The total area purchased is 2958 hectares. The locations of the acquisitions are shown on the map.

Land Acquisition Fund Status

Acquisitions 2000 - 2008



Acquisitions



■ Regional Park and Trail

1:445,000



Projection: Universal Transverse Mercator, Zone 10, North, North American Datum.

DISCLAIMER

The Capital Regional District does not warrant the accuracy within this map, nor will it accept responsibility for errors or omissions. The CRD reserves the right to alter or update the information without notice. Maps should not be used as navigation tools.

February 2009 | Acq_2000_2008_Bulletin9.mxd | Parks GIS Services

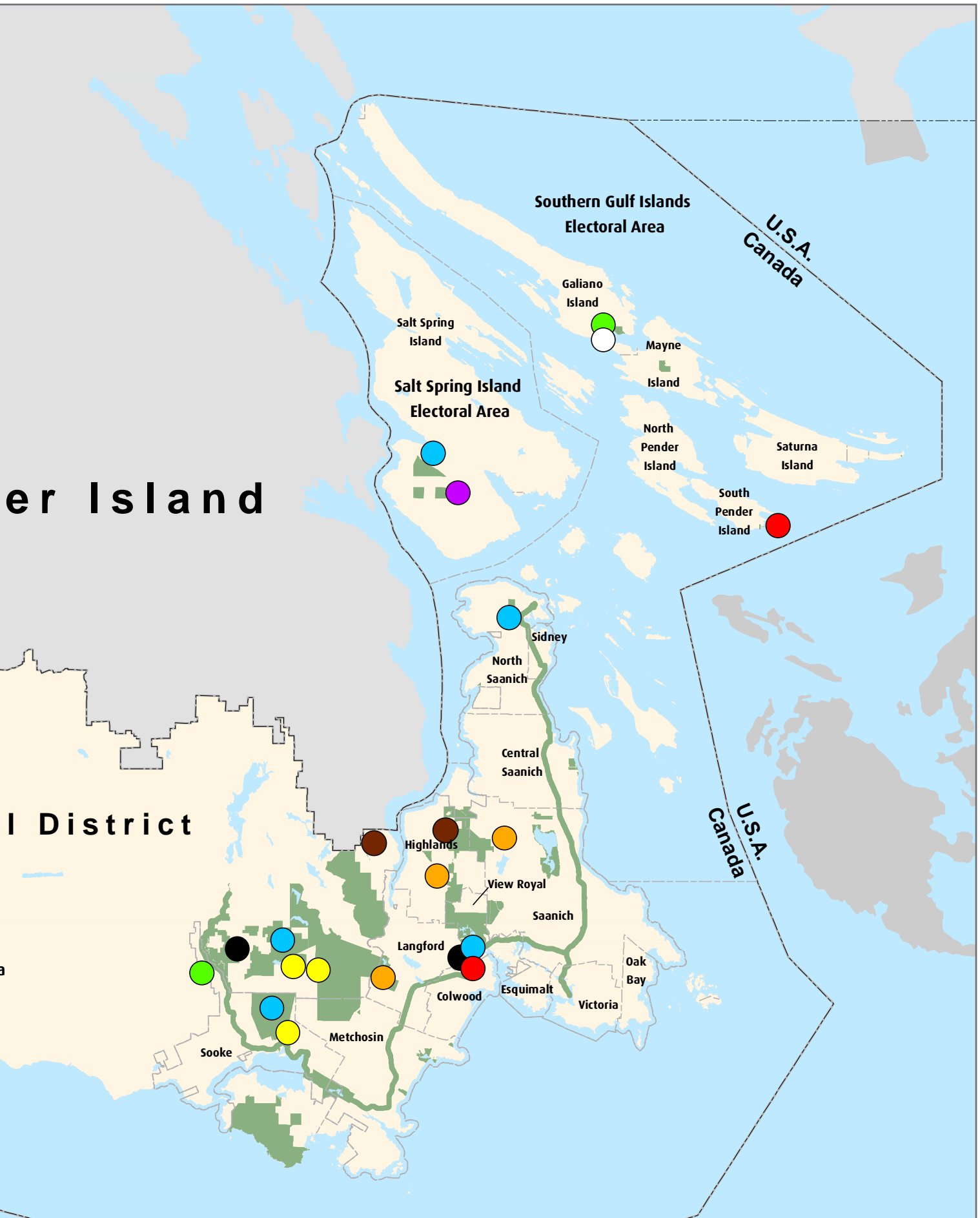


Vancouver

Capital Regional District

Juan de Fuca
Electoral Area

Canada
U.S.A.



er Island

I District

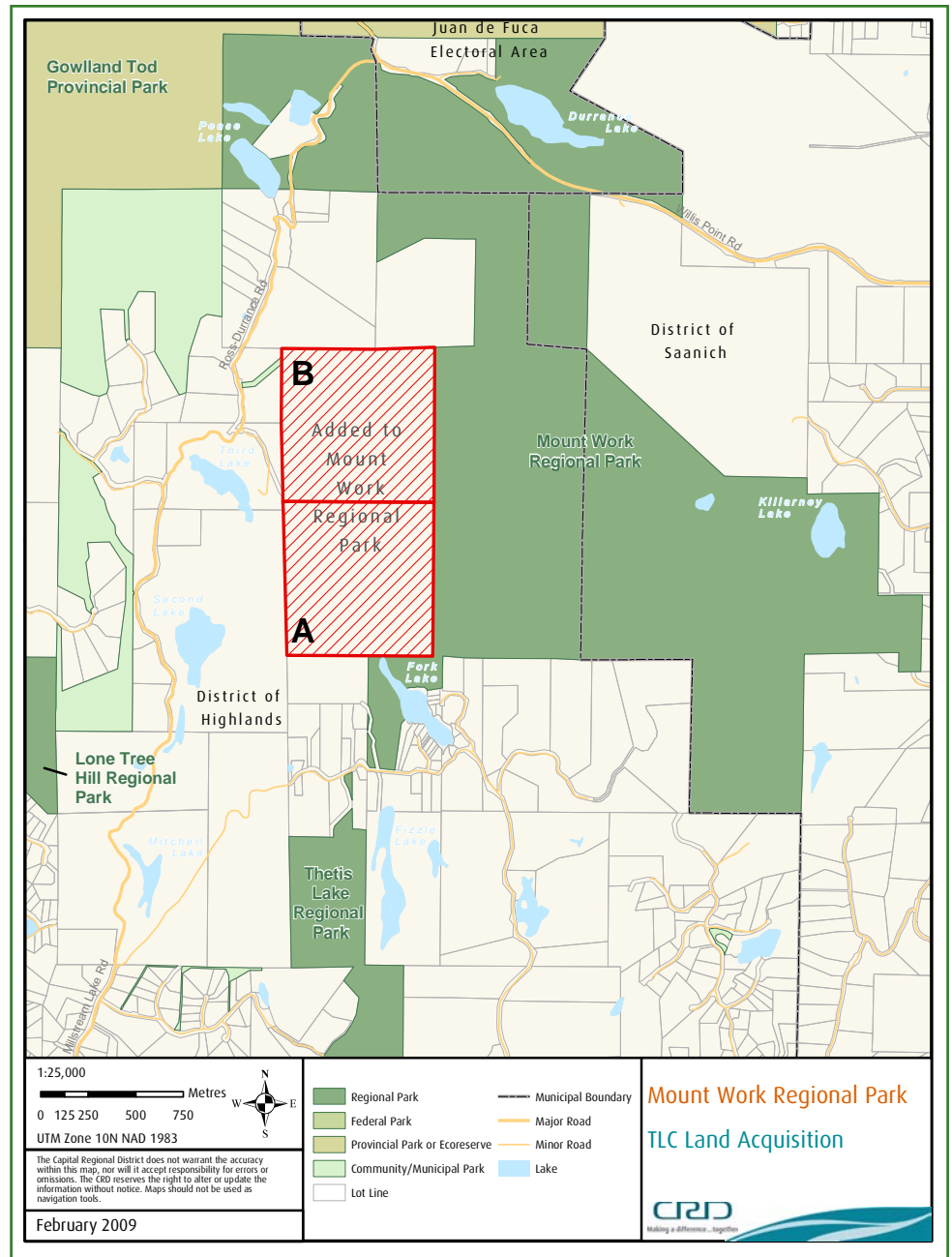
a



View from Mount Work

Mount Work Addition

Two parcels of land were added to Mount Work Regional Park in 2008. Both parcels are located adjacent to the west boundary of the park. The total area acquired was 130 hectares and the value of the acquisition was \$4,332,000. One parcel (A), valued at \$2,200,000 was donated by The Land Conservancy of British Columbia (TLC) and the second parcel (B), valued at \$2,132,000 was acquired through a partnership that included the land owner, TLC and Regional Parks. The land owner contributed \$632,000, TLC \$1,000,000 and Regional Parks \$500,000.



The acquisition of these parcels is a major step forward in helping Regional Parks complete the west boundary of Mount Work Regional Park. Additional land is needed to complete the boundary. This land protects three types of forest - older second growth, old growth and open woodland - and provides a buffer to the existing parkland. A regional trail link is proposed through the land that was acquired. This trail would connect with the existing trail across the top of Mount Work and provide a circuit trail.

Regional parks and trails protect our natural environment while giving us the means to remain in close touch with nature - and that is the essence of Regional Parks' vision.

Mount Work Media Event - August 2008

The CRD Board is pleased to partner with The Land Conservancy of BC to purchase another 65 hectares of land to become part of Mount Work Regional Park.

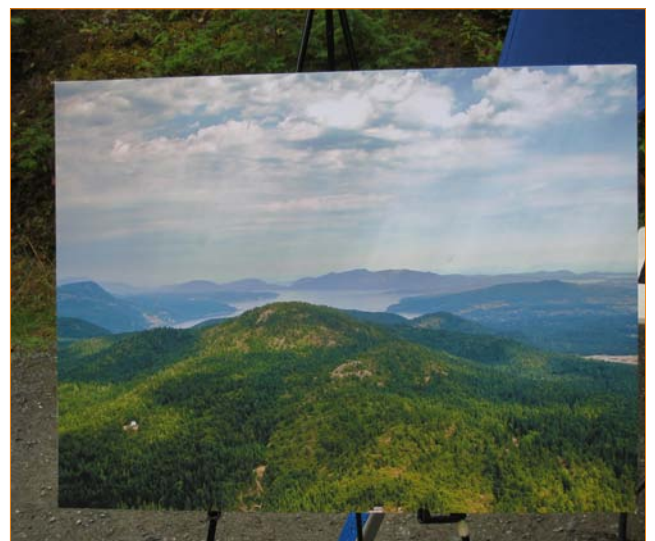
The property is located in the Highlands between Mount Work Regional Park and the Second Lake Property that was recently acquired by TLC, and connects the two creating a north south corridor from Thetis Lake Regional Park through Mount Work. This will significantly add to the continuity of public use parkland, protected green space and wildlife connectivity throughout the Highlands District.

The extension of Mount Work will go a long way toward increasing the region's ecological and recreational areas, while protecting sensitive habitat.

The acquisition is consistent with the CRD Regional Parks' Master Plan to protect endangered Garry Oak meadows, old-growth Douglas fir habitat, wetlands, intertidal zones and salmon-bearing streams, while giving greater access to the residents of the Capital Region.



Regional Parks Committee Chair, Christopher Causton



Aerial view of parkland addition

Regional Parks Land Aquisition Fund

Summary of 2008 Acquisitions



Mount Work in the background



Partnership with The Land Conservancy of British Columbia (TLC)

Upon establishment of the Land Acquisition Fund in 2000, The Land Conservancy of British Columbia (TLC) made a commitment to be a major partner in the Regional Parks' land acquisition program. Since 2000, TLC has been a partner with Regional Parks in 12 of 20 acquisitions. TLC has contributed \$5,893,500 to assist Regional Parks with the acquisition of land.

For more information, or if you have any questions, please contact:

Jeff Ward, Manager
Planning, Resource Management & Development
Regional Parks
490 Atkins Avenue, Victoria, BC V9B 2Z8
T: 250.478.3344 F: 250.478.5416
www.crd.bc.ca/parks



Making a difference...together

Regional Parks

490 Atkins Avenue,
Victoria, BC, Canada V9B 2Z8

250.478.3344
www.crd.bc.ca/parks
crdparks@crd.bc.ca