

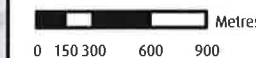
Map 2: Land Use Designations



Land Use Designation

-  Agricultural Land Reserve
-  Marine
-  Park
-  Settlement Area
-  Settlement Containment Area
-  Official Community Plan
-  Lot Boundaries
-  First Nation Reserves
-  Municipal Boundary
-  Roads

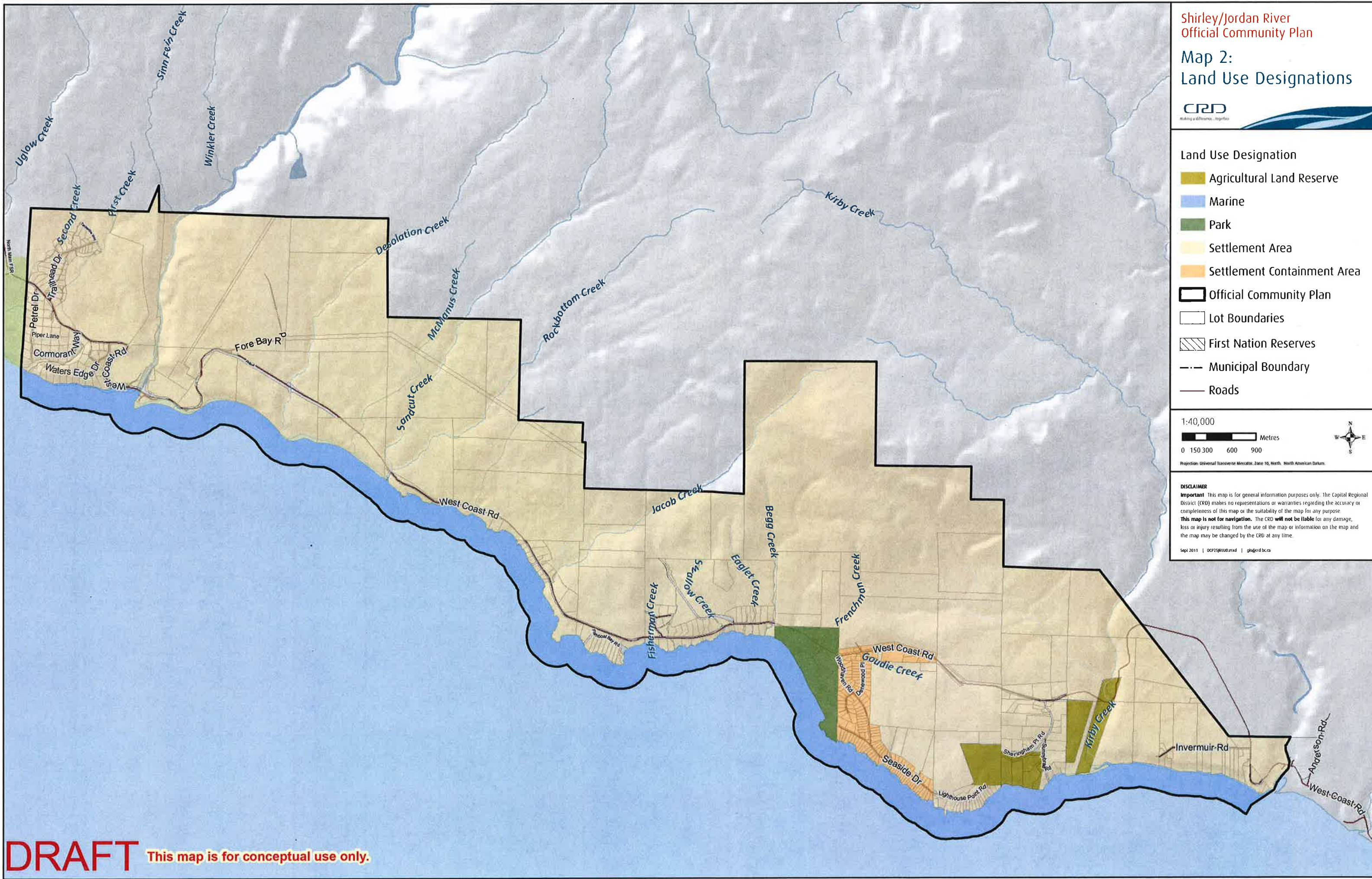
1:40,000



Projection: Universal Transverse Mercator, Zone 10, North, North American Datum

DISCLAIMER
Important! This map is for general information purposes only. The Capital Regional District (CRD) makes no representations or warranties regarding the accuracy or completeness of this map or the suitability of the map for any purpose. **This map is not for navigation.** The CRD **will not be liable** for any damage, loss or injury resulting from the use of the map or information on the map and the map may be changed by the CRD at any time.

Sept 2011 | OCP2581100.mxd | gis@crd.bc.ca



DRAFT This map is for conceptual use only.



-  Beach Access
-  Heritage Tree
-  Recreational Tourist Site
-  Gravel Quarry Location
-  High Wildfire Potential
-  Community Parks
-  Provincial Parks
-  Official Community Plan
-  Lot Boundaries
-  First Nation Reserves
-  Municipal Boundary
-  Roads

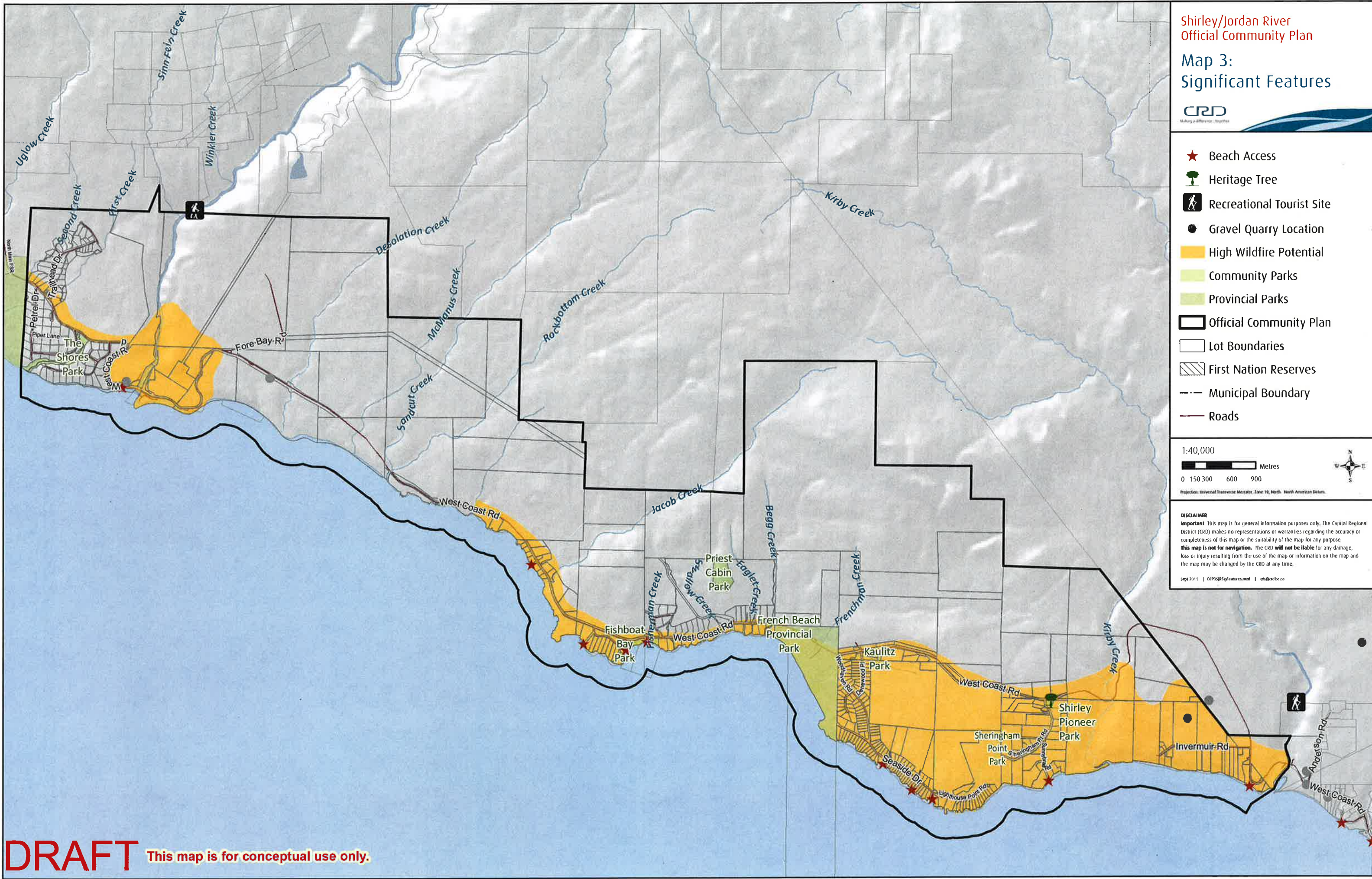
1:40,000



Projection: Universal Transverse Mercator, Zone 18, North, North American Datum.

DISCLAIMER
Important This map is for general information purposes only. The Capital Regional District (CRD) makes no representations or warranties regarding the accuracy or completeness of this map or the suitability of the map for any purpose. **This map is not for navigation.** The CRD will not be liable for any damage, loss or injury resulting from the use of the map or information on the map and the map may be changed by the CRD at any time.

Sept 2011 | OCP3535Signatures.mxd | gis@crd.bc.ca



DRAFT This map is for conceptual use only.



- Development Permit Area
 - Riparian (30m Buffer)
 - Foreshore (15m Buffer)
 - Farmland (15m Buffer)
 - Steep Slopes (>30%)
- Official Community Plan
- Lot Boundaries
- Municipal Boundary
- Roads

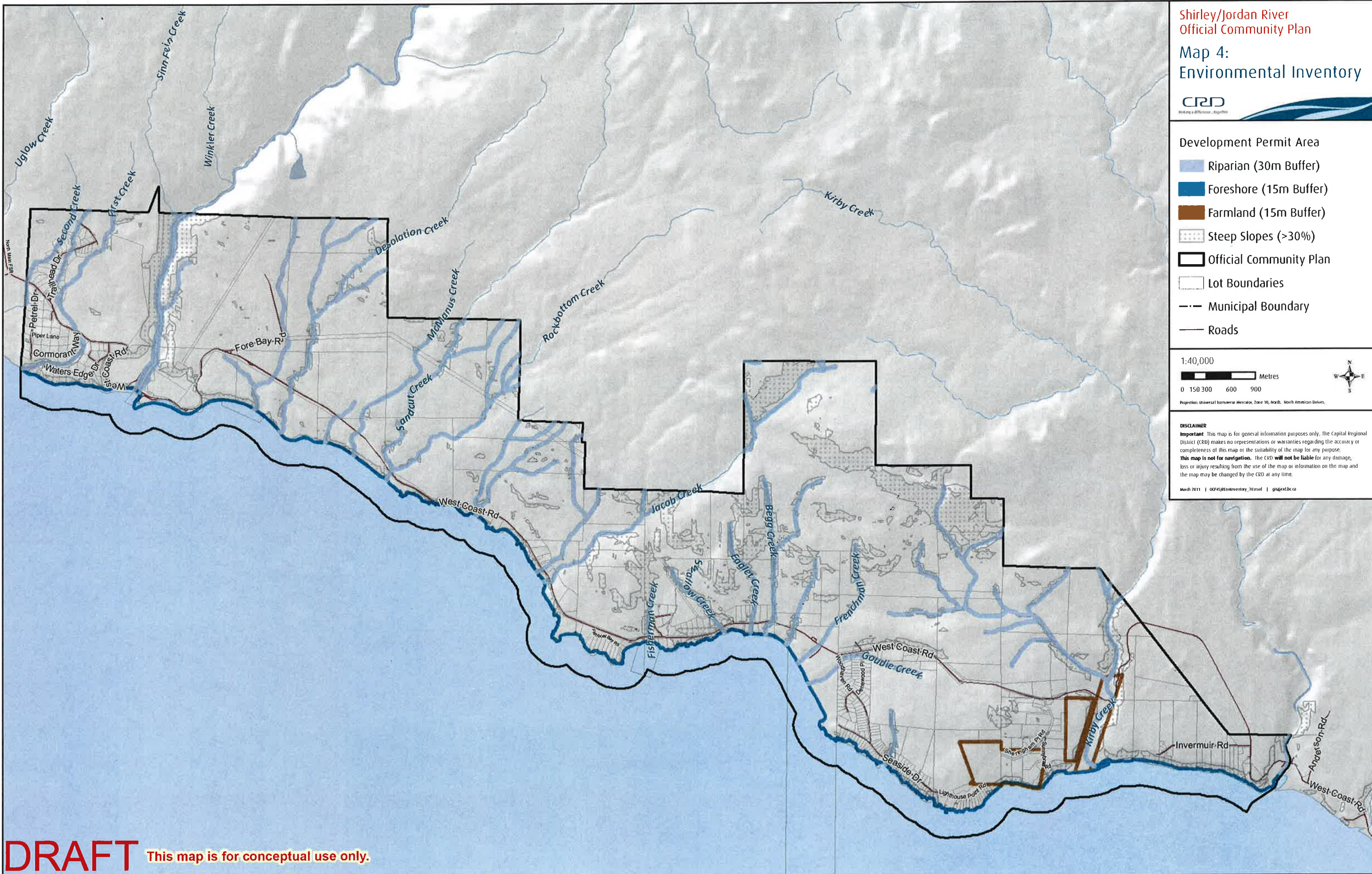
1:40,000



Projection: Universal Transverse Mercator, Zone 10, North, North American Datum

DISCLAIMER
Important: This map is for general information purposes only. The Capital Regional District (CRD) makes no representations or warranties regarding the accuracy or completeness of this map or the suitability of the map for any purpose. **This map is not for navigation.** The CRD will not be liable for any damage, loss or injury resulting from the use of the map or information on the map and the map may be changed by the CRD at any time.


March 2011 | 00458EnvInventory_30.mxd | gis@crd.bc.ca




DRAFT This map is for conceptual use only.

Map 5a:
Steep Slope
Development Permit Area




-  Steep Slopes (>30%)
-  Official Community Plan
-  Lot Boundaries
-  First Nation Reserves
-  Municipal Boundary
-  Roads

1:40,000



0 150 300 600 900 Metres



Projection: Universal Transverse Mercator, Zone 10, North, North American Datum

DISCLAIMER
Important This map is for general information purposes only. The Capital Regional District (CRD) makes no representations or warranties regarding the accuracy or completeness of this map or the suitability of the map for any purpose. **This map is not for navigation.** The CRD **will not be liable** for any damage, loss or injury resulting from the use of the map or information on the map and the map may be changed by the CRD at any time.

March 2011 | OCP5aSRPASS_30.mxd | ghd@crd.bc.ca



DRAFT This map is for conceptual use only.



Development Permit Area

- Riparian (30m Buffer)
- Foreshore (15m Buffer)
- Official Community Plan

- Lot Boundaries
- First Nation Reserves
- Municipal Boundary
- Roads

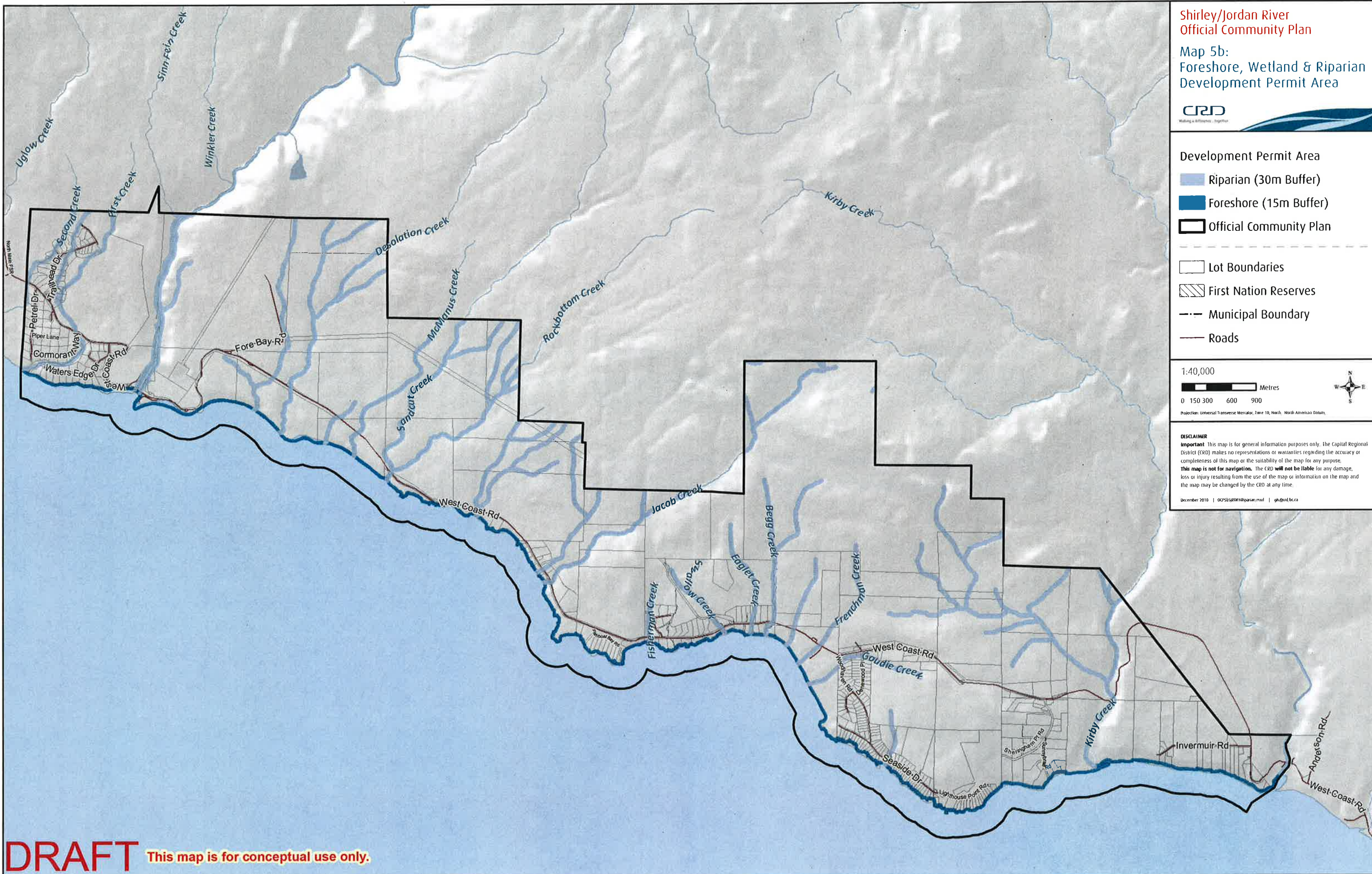
1:40,000



Projection: Universal Transverse Mercator, Zone 18, North, North American Datum

DISCLAIMER
Important This map is for general information purposes only. The Capital Regional District (CRD) makes no representations or warranties regarding the accuracy or completeness of this map or the suitability of the map for any purpose. **This map is not for navigation.** The CRD **will not be liable** for any damage, loss or injury resulting from the use of the map or information on the map and the map may be changed by the CRD at any time.

December 2010 | 065259DPA/Riparian.mxd | gh@crd.bc.ca



DRAFT This map is for conceptual use only.



Development Permit Area

- Commercial DPA
- Industrial DPA
- Official Community Plan
- Lot Boundaries
- First Nation Reserves
- Municipal Boundary

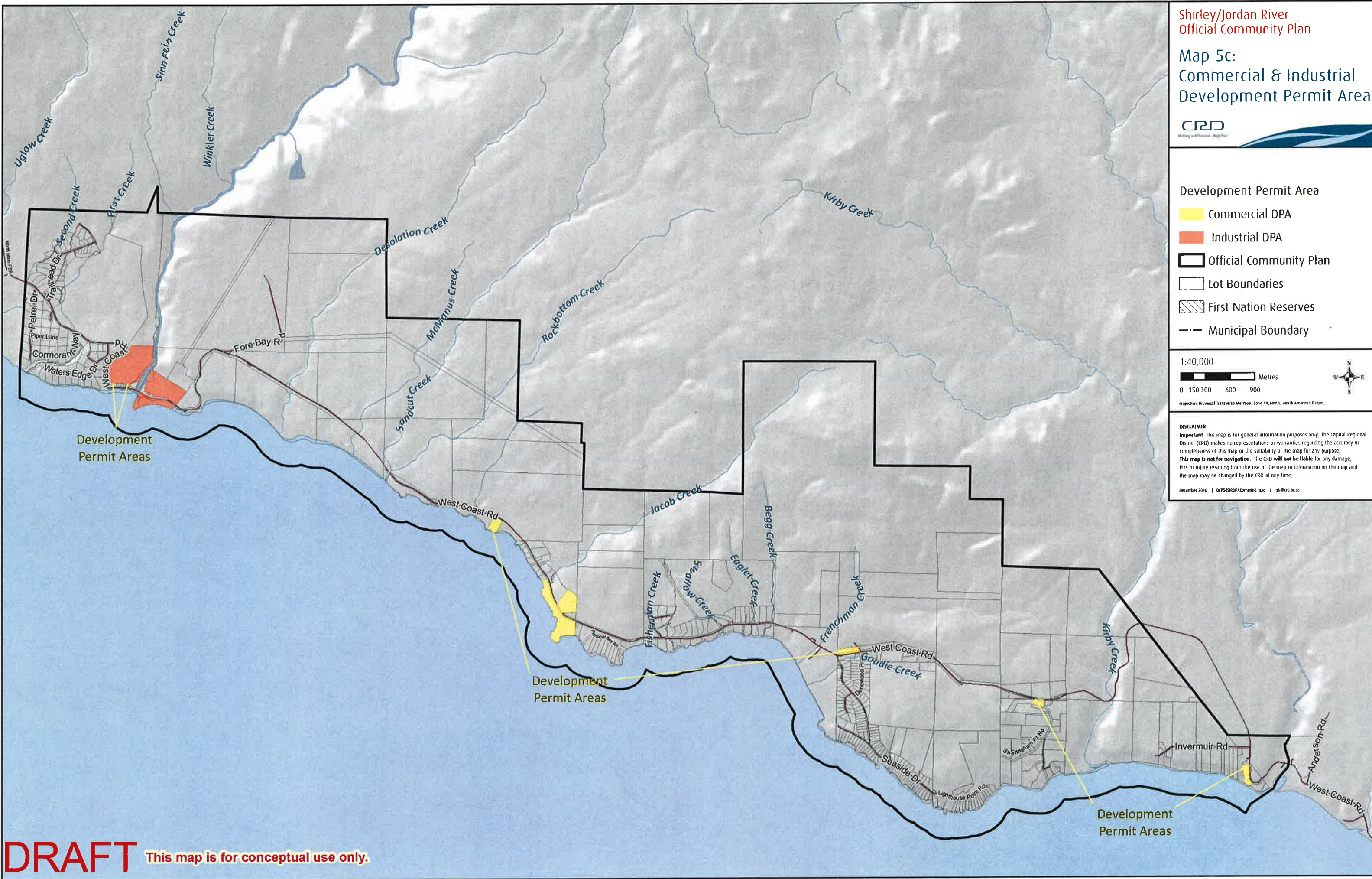
1:40,000



Projection: Universal Transverse Mercator, Zone 10, North, North American Datum

DISCLAIMER
Important This map is for general information purposes only. The Capital Regional District (CRD) makes no representations or warranties regarding the accuracy or completeness of this map or the suitability of the map for any purpose. **This map is not for navigation.** The CRD **will not be liable** for any damage, loss or injury resulting from the use of the map or information on the map and the map may be changed by the CRD at any time.

December 2010 | OCP525RDPACommPlan.mxd | gis@crd.bc.ca



Development
Permit Areas

Development
Permit Areas

Development
Permit Areas

DRAFT This map is for conceptual use only.



Development Permit Area

-  Farmland (15m Buffer)
-  Official Community Plan
-  Lot Boundaries
-  First Nation Reserves
-  Municipal Boundary
-  Roads

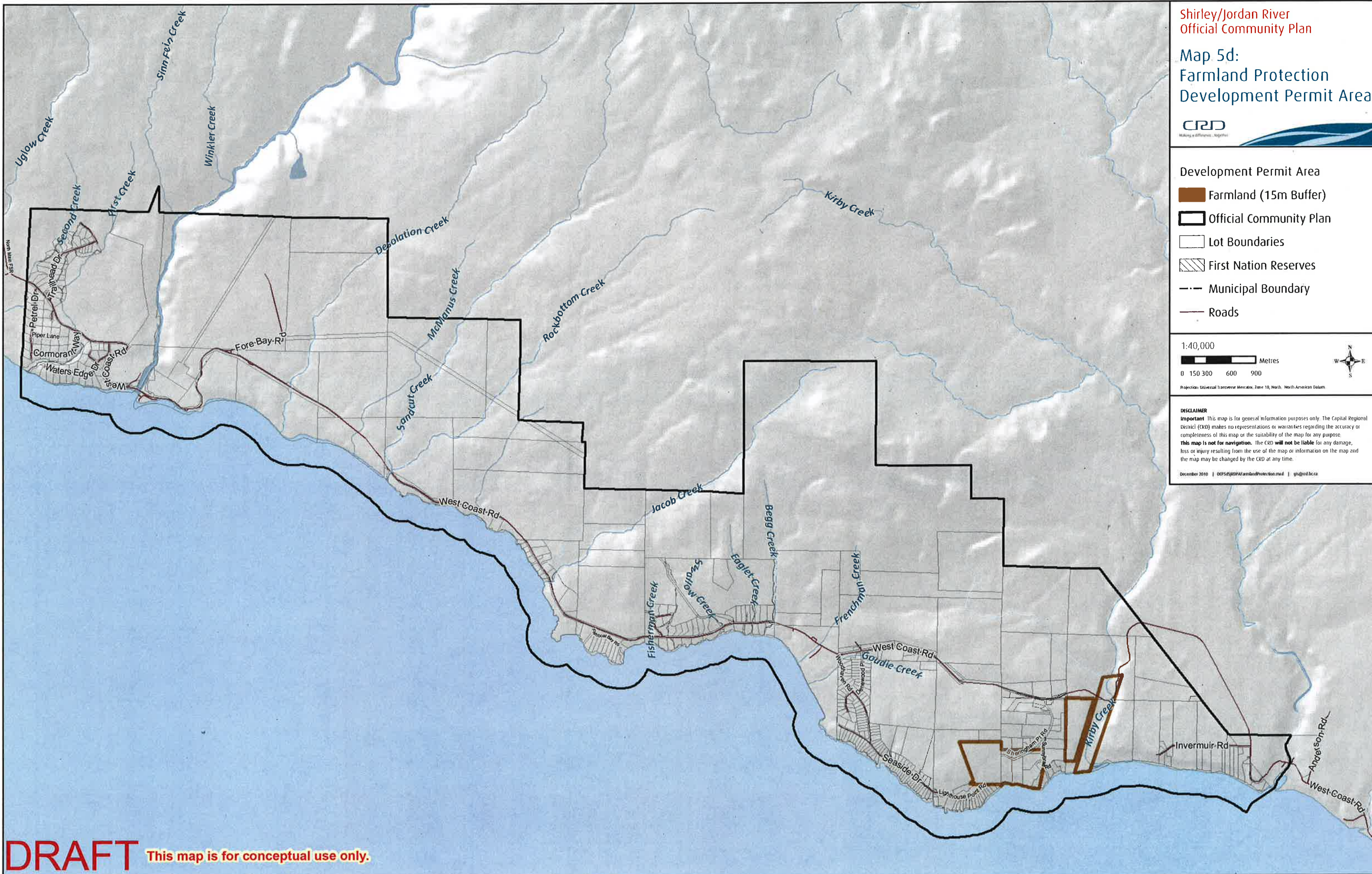
1:40,000



Projection: Universal Transverse Mercator, Zone 10, North, North American Datum

DISCLAIMER
Important This map is for general information purposes only. The Capital Regional District (CRD) makes no representations or warranties regarding the accuracy or completeness of this map or the suitability of the map for any purpose. **This map is not for navigation.** The CRD will not be liable for any damage, loss or injury resulting from the use of the map or information on the map and the map may be changed by the CRD at any time.

December 2010 | OOPS\GIS\FarmlandProtection.mxd | gis@crd.bc.ca



DRAFT This map is for conceptual use only.

Map 6:
Development Approval
Information Area



-  Development Approval Information Area
-  Official Community Plan
-  Lot Boundaries
-  First Nation Reserves
-  Municipal Boundary
-  Roads

1:40,000

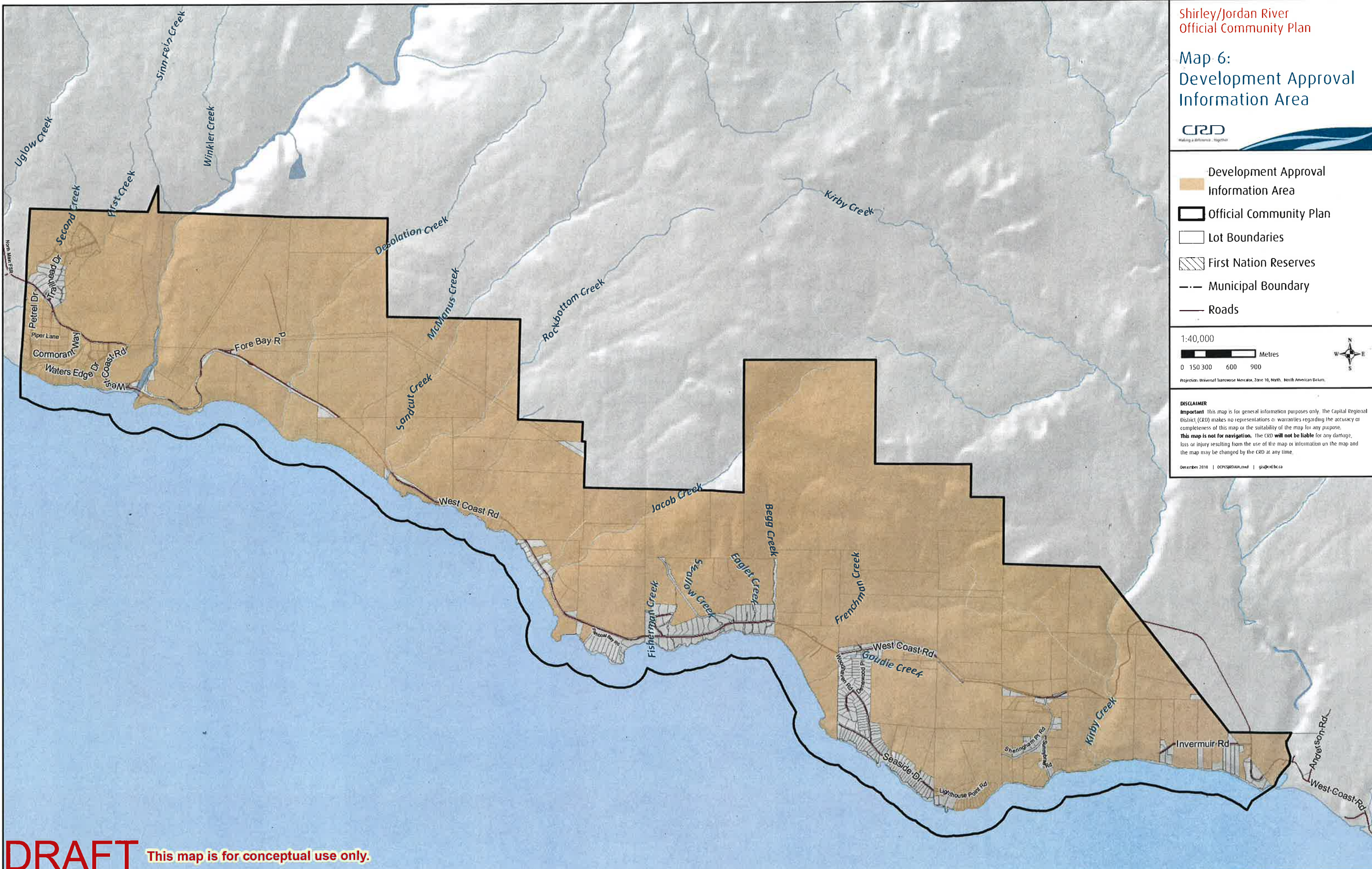


Projection: Universal Transverse Mercator, Zone 10, North, North American Datum



DISCLAIMER
Important This map is for general information purposes only. The Capital Regional District (CRD) makes no representations or warranties regarding the accuracy or completeness of this map or the suitability of the map for any purpose. **This map is not for navigation.** The CRD **will not be liable** for any damage, loss or injury resulting from the use of the map or information on the map and the map may be changed by the CRD at any time.

December 2010 | OCP/SRD/MA/1001 | gis@crd.bc.ca



DRAFT This map is for conceptual use only.