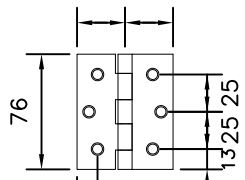


ALUMINUM SELF OPENING HINGES (5022 ALUM.) c/w S/S COUNTERSUNK BOLTS (TYP.)

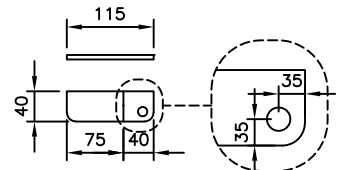
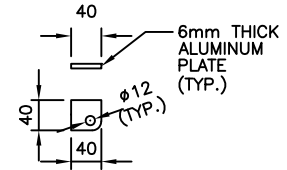
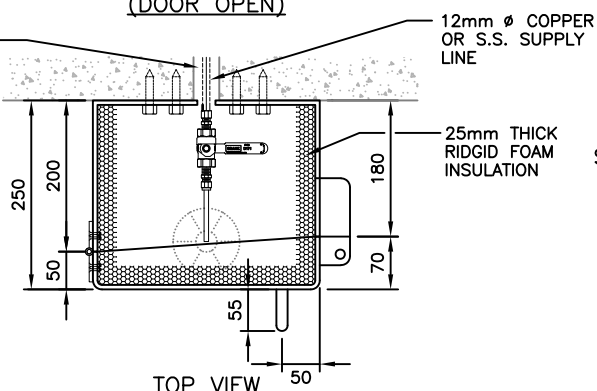
32 32



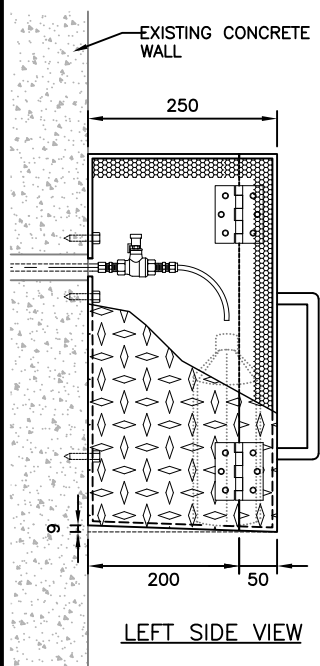
HINGE DETAIL

TOP VIEW (DOOR OPEN)

SAMPLE POINT DETAILS AS PER STANDARD DRAWING 4.9



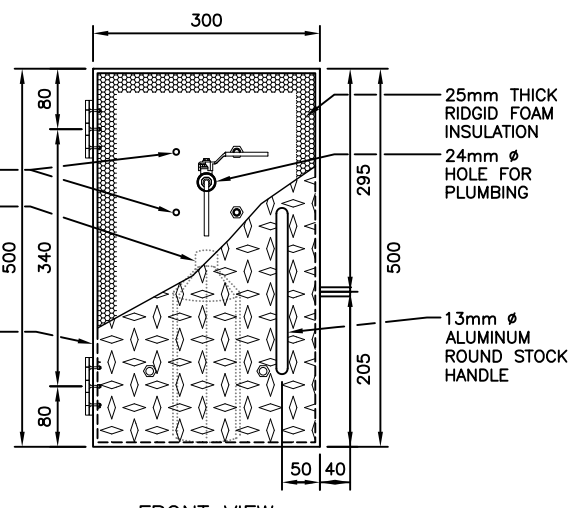
PADLOCK DETAIL



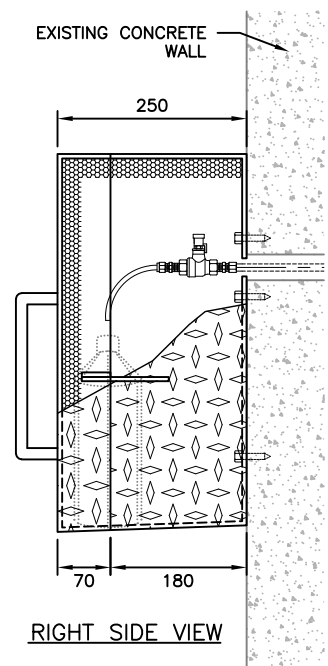
8mm  $\phi$  HOLES FOR HILTI BOLTS (TYP.)

PLASTIC WATER SAMPLING BOTTLE, MAX. HEIGHT 230mm (PROVIDED BY OTHERS)

6mm ( $\frac{1}{4}$ ") THICK ALUMINUM CHECKER PLATE



CHECKER BOX DETAIL



LIST OF MATERIALS

ITEM	DESCRIPTION	QUA.
①	12mm $\phi$ BRASS COMPRESSION MALE CONNECTOR	2
②	12mm $\phi$ FxF NPT THREADED BRASS BALL VALVE	1
③	12mm $\phi$ SHORT RADIUS COPPER OR S.S. PIPE NOZZLE (FIELD BENDING AFTER INSTALLATION)	1



Making a difference...together

WATER SAMPLING PORT ENCLOSURE DETAIL

revision date: FEB 2023 scale: 1:10  
 drawn: GA/GM/PJ checked: KK/HE

standard drawing no.:

4.8