

Wastewater Treatment Project

We are close to completing the construction of the Wastewater Treatment Project. The McLoughlin Point Wastewater Treatment Plant is receiving wastewater from the Clover Point Pump Station and the Macaulay Point Pump Station and is treating it to one of the highest levels of treatment available.

The majority of construction is complete and we are moving into the final restoration stage on most components. Construction continues on the Trent Forcemain and Arbutus Attenuation Tank. These are being built to increase the capacity of the conveyance system and are expected to be completed in spring 2021.

For more information about the project please enjoy this video youtu.be/w8_U5-0fq44

Construction Updates

McLOUGHLIN POINT WASTEWATER TREATMENT PLANT

Construction is complete at the McLoughlin Point Wastewater Treatment Plant which is now in full operation treating wastewater to a tertiary level. The plant can treat 108 megalitres of wastewater per day from the core area municipalities of Victoria, Esquimalt, Saanich, Oak Bay, View Royal, Langford and Colwood, and the Esquimalt and Songhees Nations. The treatment plant includes a multi-level green roof, mature landscaping, an observation deck, and education space.



Aerial view of McLoughlin Point Wastewater Treatment Plant.

RESIDUALS TREATMENT FACILITY

The Residuals Treatment Facility turns residual solids from the McLoughlin Point Wastewater Treatment Plant into Class A biosolids. These are the highest quality by-product suitable for beneficial use.



Aerial view of the Residuals Treatment Facility.

CLOVER POINT PUMP STATION

The Clover Point Pump Station has been expanded and upgraded to convey wastewater from Oak Bay, Victoria, and Saanich to the McLoughlin Point Wastewater Treatment Plant for treatment. The majority of construction is complete and the Project is working towards completion of all Clover Point Pump Station public amenities in spring 2021. The public amenities include public washrooms, pedestrian and bicycle paths, bicycle facilities, a public plaza, street furniture and road intersection improvements.



Clover Point

MACAULAY POINT PUMP STATION

Construction on the new Macaulay Point Pump Station is complete. Landscaping and restoration will create an attractive and welcoming waterfront space to be enjoyed. The new Macaulay Point Pump Station conveys wastewater from Esquimalt, View Royal, Langford, Colwood, Saanich, Victoria and the Esquimalt and Songhees Nations to the McLoughlin Point Wastewater Treatment Plant for treatment.



Macaulay Point Pump Station

ARBUTUS ATTENUATION TANK

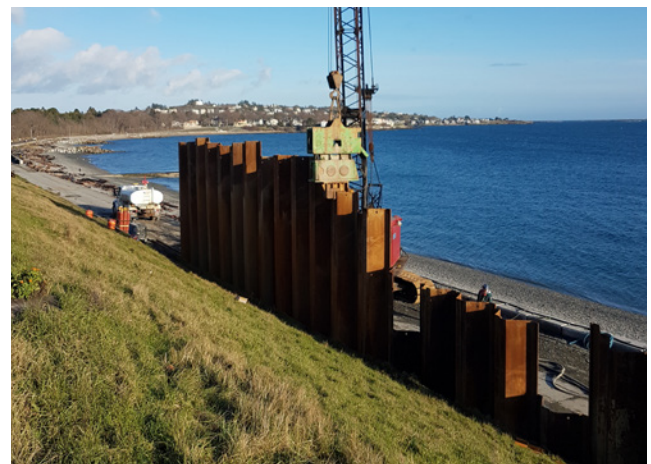
The Arbutus Attenuation Tank will temporarily store wastewater flows during high volume storm events to reduce the number of sewer overflows. Excavation, shoring and pouring the concrete tank walls and roof are now complete. The tank is expected to be connected to the existing conveyance system in spring 2021. Once construction is complete the site will be planted with vegetation appropriate for the local woodland setting.



Construction progress at the Arbutus Attenuation Tank

TRENT FORCEMAIN

The Trent Forcemain is being built to reduce the number of wastewater overflows during storm events. It includes 1.9 km of pipe from the intersection of Chandler Ave and St Charles Street to the Clover Point Pump Station. The forcemain is nearly complete and is currently being connected to the existing wastewater conveyance system at the intersection of St. Charles Street and Chandler Avenue. Final restoration and commissioning activities for the Trent Forcemain are expected to be complete in spring 2021.



Pile driving for the Trent Forcemain

RESIDUAL SOLIDS CONVEYANCE LINE

Construction on the Residual Solids Conveyance Line is complete. Final landscaping is expected to be finished in spring 2021.



Landscaping still to be completed for Pump Station on Interurban Rail Trail

Adding Value

One of the Project's goals was to add value to the surrounding community and enhance the livability of neighborhoods. This was achieved by improving infrastructure and adding amenities in neighbourhoods impacted by the construction of the Project, including:



Clover Point public space improvements including a viewing plaza and public washrooms



Creating a park-like amenity at Macaulay Point Pump Station



Dallas Road cycle track



Improving the level of water service to properties in Saanich near Hartland Landfill

PEAK CONSTRUCTION PERIOD SUMMARY



24

active construction sites



650

construction workers



35km

pipes laid



Infrastructure improvements along the Clover Forcemain

Thank you!

The Wastewater Treatment Project Team has always been mindful of the impact construction has on residents and the neighbourhoods that we have constructed in. We are pleased that we met the regulatory deadline to treat the core area's wastewater and that this disruption is nearly at its end. We want to thank you for your patience as we worked to bring wastewater treatment to the core area.