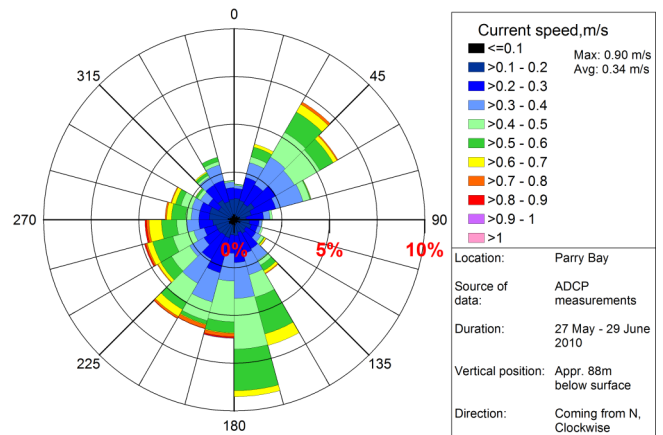
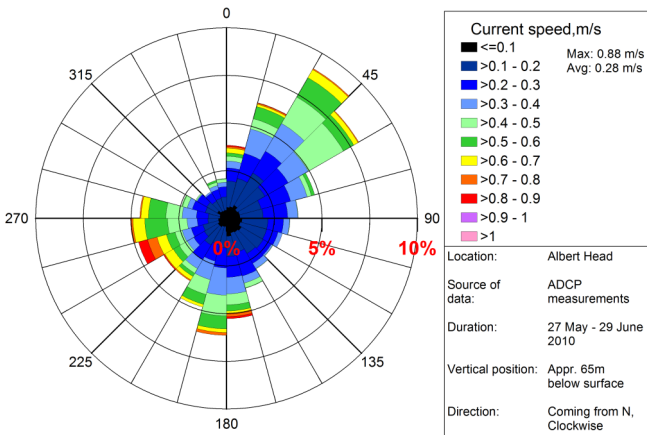
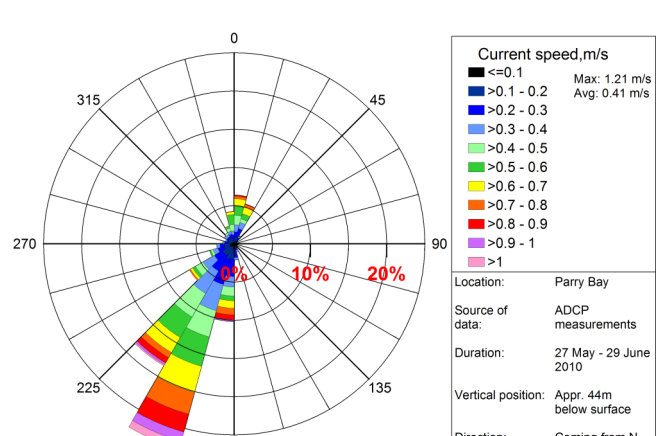
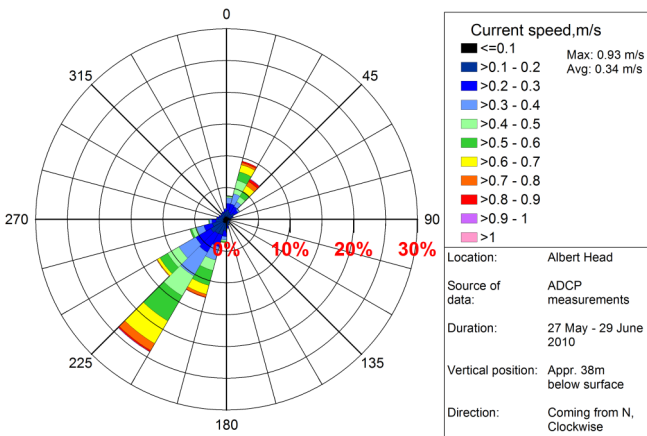
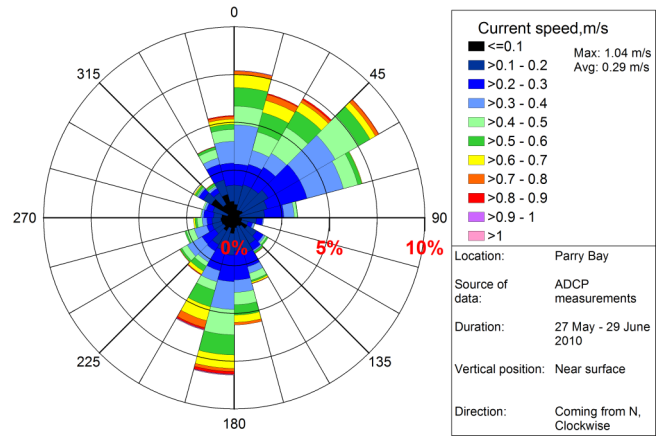
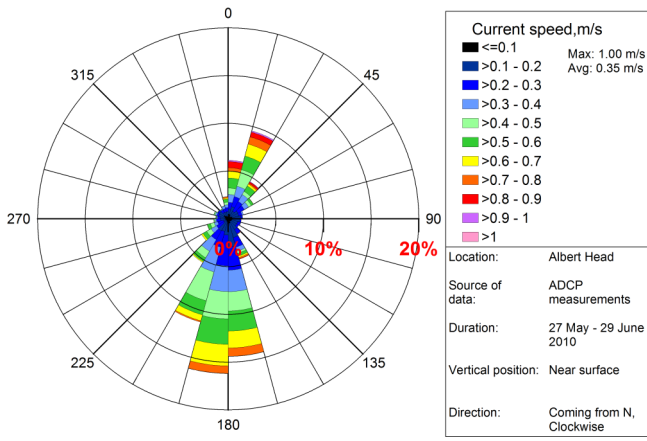


Appendix 3 Current Roses



A SHEET | SCALE | NTS | CUSTOMER

Oneway
to zero harm

Date:
 Drawn by:
 Edited by:
 App'd by:

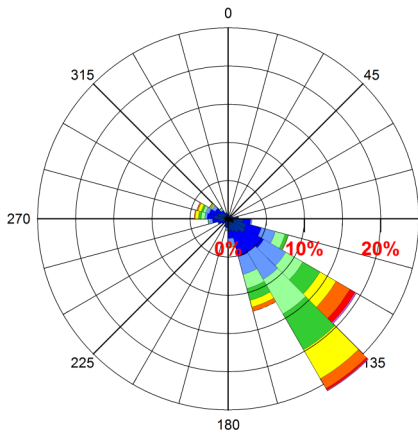
CRD
Making a difference...together



CRD CORE AREA WASTEWATER TREATMENT PROGRAM
 STAGE II ENVIRONMENTAL IMPACT STUDY
 CURRENT ROSES
 ALBERT HEAD AND PARRY BAY

"This drawing is prepared solely for the use of our customer as specified in the accompanying report. WorleyParsons Canada Services Ltd. assumes no liability to any other party for any representations contained in this drawing."

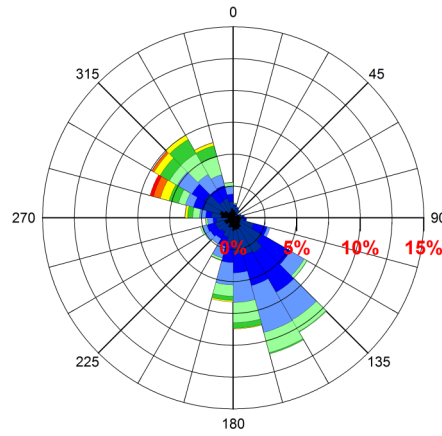
WORLEYPARSONS PROJECT No. 307071-00020	FIG No A3-1	REV A
---	----------------	----------



Current speed, m/s
 Max: 1.10 m/s
 Avg: 0.35 m/s

- ≤ 0.1
- >0.1 - 0.2
- >0.2 - 0.3
- >0.3 - 0.4
- >0.4 - 0.5
- >0.5 - 0.6
- >0.6 - 0.7
- >0.7 - 0.8
- >0.8 - 0.9
- >0.9 - 1
- >1

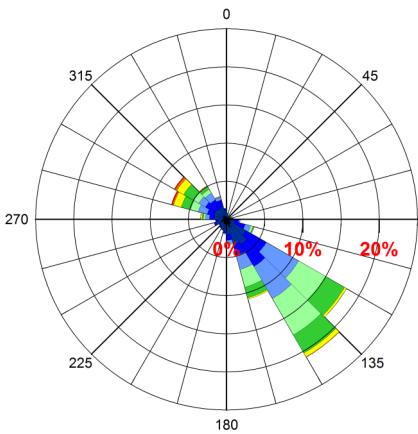
Location: Finnerty Cove
 Source of data: ADCP measurements
 Duration: 27 May - 29 June 2010
 Vertical position: Near surface
 Direction: Coming from N, Clockwise



Current speed, m/s
 Max: 0.90 m/s
 Avg: 0.27 m/s

- ≤ 0.1
- >0.1 - 0.2
- >0.2 - 0.3
- >0.3 - 0.4
- >0.4 - 0.5
- >0.5 - 0.6
- >0.6 - 0.7
- >0.7 - 0.8
- >0.8 - 0.9
- >0.9 - 1
- >1

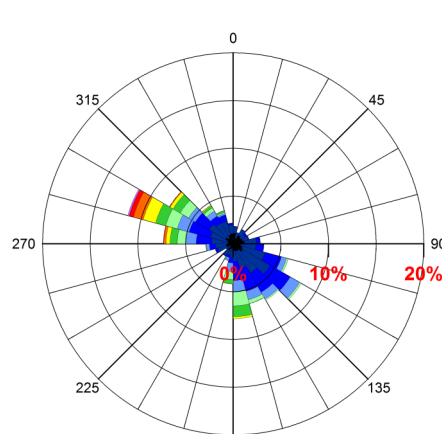
Location: Harro Strait
 Source of data: ADCP measurements
 Duration: 27 May - 29 June 2010
 Vertical position: Near surface
 Direction: Coming from N, Clockwise



Current speed, m/s
 Max: 0.88 m/s
 Avg: 0.30 m/s

- ≤ 0.1
- >0.1 - 0.2
- >0.2 - 0.3
- >0.3 - 0.4
- >0.4 - 0.5
- >0.5 - 0.6
- >0.6 - 0.7
- >0.7 - 0.8
- >0.8 - 0.9
- >0.9 - 1
- >1

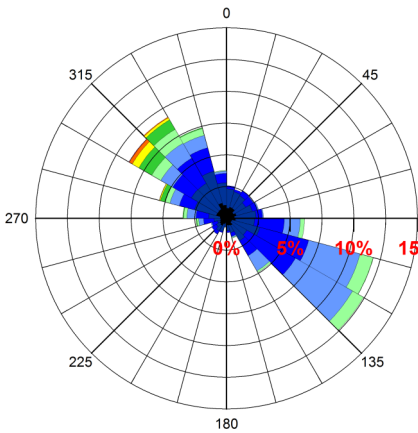
Location: Finnerty Cove
 Source of data: ADCP measurements
 Duration: 27 May - 29 June 2010
 Vertical position: Appr. 24m below surface
 Direction: Coming from N, Clockwise



Current speed, m/s
 Max: 0.96 m/s
 Avg: 0.24 m/s

- ≤ 0.1
- >0.1 - 0.2
- >0.2 - 0.3
- >0.3 - 0.4
- >0.4 - 0.5
- >0.5 - 0.6
- >0.6 - 0.7
- >0.7 - 0.8
- >0.8 - 0.9
- >0.9 - 1
- >1

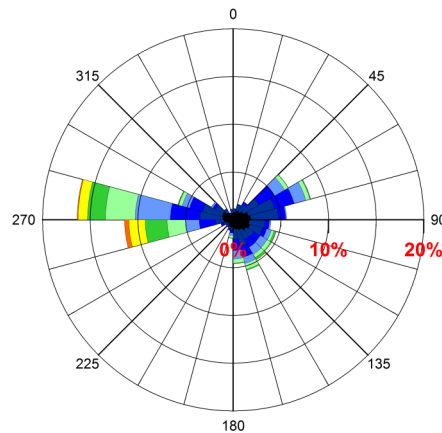
Location: Harro Strait
 Source of data: ADCP measurements
 Duration: 27 May - 29 June 2010
 Vertical position: Appr. 28m below surface
 Direction: Coming from N, Clockwise



Current speed, m/s
 Max: 0.91 m/s
 Avg: 0.23 m/s

- ≤ 0.1
- >0.1 - 0.2
- >0.2 - 0.3
- >0.3 - 0.4
- >0.4 - 0.5
- >0.5 - 0.6
- >0.6 - 0.7
- >0.7 - 0.8
- >0.8 - 0.9
- >0.9 - 1
- >1

Location: Finnerty Cove
 Source of data: ADCP measurements
 Duration: 27 May - 29 June 2010
 Vertical position: Appr. 49m below surface
 Direction: Coming from N, Clockwise



Current speed, m/s
 Max: 0.79 m/s
 Avg: 0.23 m/s

- ≤ 0.1
- >0.1 - 0.2
- >0.2 - 0.3
- >0.3 - 0.4
- >0.4 - 0.5
- >0.5 - 0.6
- >0.6 - 0.7
- >0.7 - 0.8
- >0.8 - 0.9
- >0.9 - 1
- >1

Location: Harro Strait
 Source of data: ADCP measurements
 Duration: 27 May - 29 June 2010
 Vertical position: Appr. 57m below surface
 Direction: Coming from N, Clockwise

A SHEET | SCALE | NTS

CUSTOMER



Making a difference...together



WorleyParsons
 resources & energy

CRD CORE AREA WASTEWATER TREATMENT PROGRAM
 STAGE II ENVIRONMENTAL IMPACT STUDY
 CURRENT ROSES
 ALBERT HEAD AND PARRY BAY

Date:
 Drawn by:
 Edited by:
 App'd by:

"This drawing is prepared solely for the use of our customer as specified in the accompanying report. WorleyParsons Canada Services Ltd. assumes no liability to any other party for any representations contained in this drawing."

WORLEYPARSONS PROJECT No. 307071-00020

FIG No A3-2

REV A