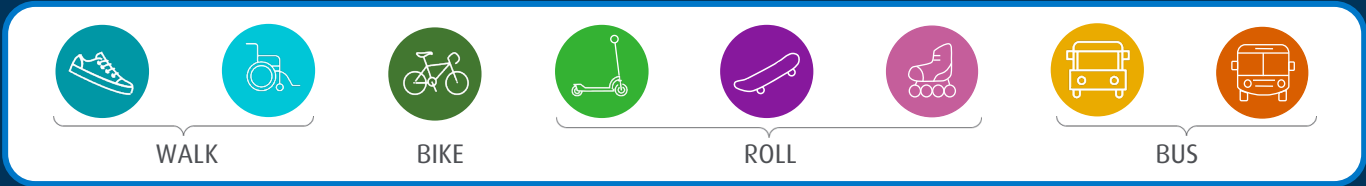


READY STEP ROLL

SUSTAINABLE SCHOOL COMMUTE PLANNING

The overall **goal** of the CRD's Ready Step Roll initiative is to enable school communities to use active and sustainable transportation to/from school more often by reducing barriers in accessibility, safety, convenience and comfort.



There are many **benefits** of using active and sustainable transportation to/from school more often (all or part-way).

HEALTH & WELL-BEING

- Support physical and mental health
- Decrease stress, anxiety and depression
- Encourage social interaction and improve social skills
- Promote lifelong healthy commuting habits



ACADEMIC & LIFE-SKILLS

- Arrive energized and more able to concentrate
- Improve student learning and academic outcomes
- Cultivate decision-making, time and risk management skills
- Build confidence, capability, independence and autonomy



PERSONAL & ROAD SAFETY

- Reduce traffic congestion
- Lower risk of collision and injury
- Practice valuable pedestrian, cycling and transit skills
- More eyes on the street with safety in numbers



COMMUNITY & HOUSEHOLD

- Save time and money
- Better understand the local area
- Increase sense of belonging and community connection
- Relieve pressure and stress from household routine

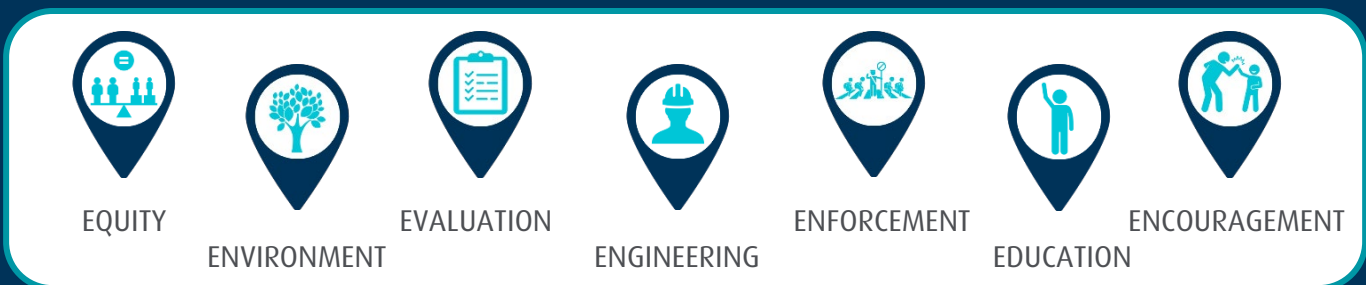


CLIMATE ACTION & AIR QUALITY

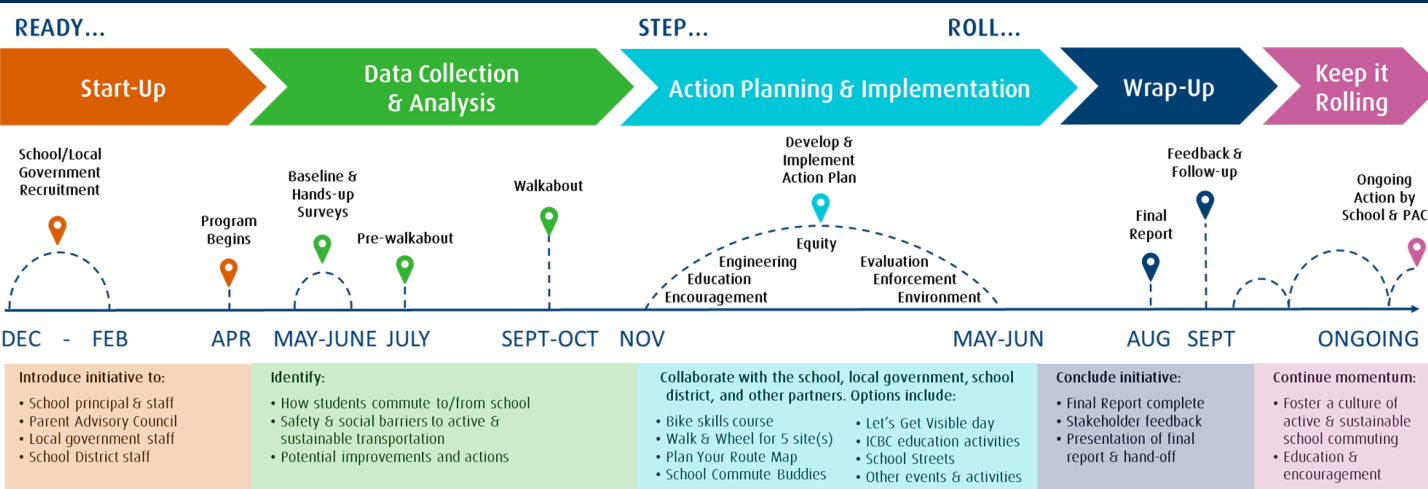
- Lower environmental footprint
- Reduce vehicle greenhouse gas emissions
- Improve air quality by reducing air pollution
- Lower risk of lung and cardiovascular disease



Our **7 E's approach** to sustainable school commute planning.



RSR works annually with up to five school communities, their respective local government agencies and other partners through the following 18-month **process**.



KEY PARTNERS

CRD

Facilitator and Project Manager of the Ready Step Roll (RSR) initiative.

Local Government(s)

Provide local knowledge on street level infrastructure, assist in Action Plan development, evaluate and consider proposed solutions, support and/or undertake implementation and follow up with the school regarding safety improvements.

School Administration & School District

Provide insight into school sites and bussing, evaluate and consider implementation of proposed solutions on school property and coordinate and support implementation of engagement, education and encouragement activities.

School Community (Parents/Caregivers, PACs & Students)

Provide perspectives on the school-neighborhood, identify opportunities for improving safety during drop-off and pick-up times, contribute to the action planning process, and coordinate and support the implementation of engagement, education and encouragement activities.

RESOURCES FOR SCHOOLS

Participating schools receive several RSR resources, including but not limited to:

- Plan Your Route maps
- Walk and Wheel for 5 site(s)
- Action Plan and Final Report
- School Commute Buddies brochures
- Safety tips, celebration, education and encouragement events and activities

