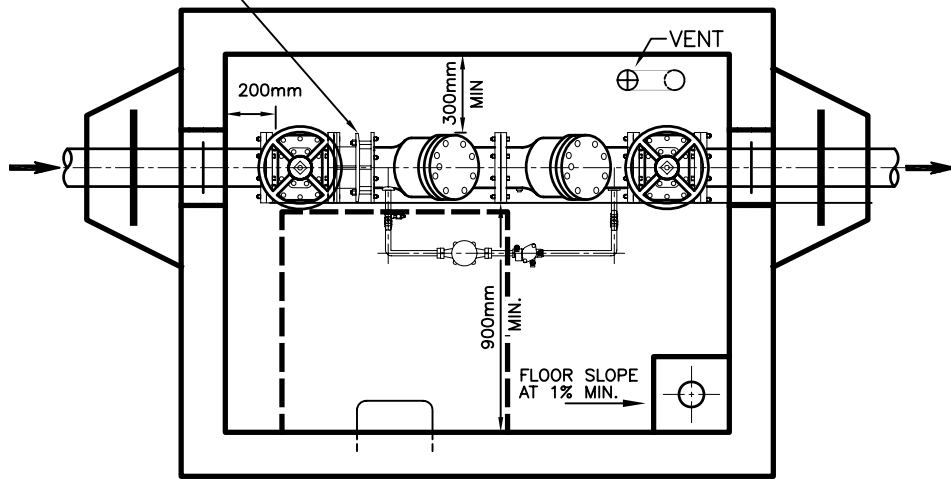


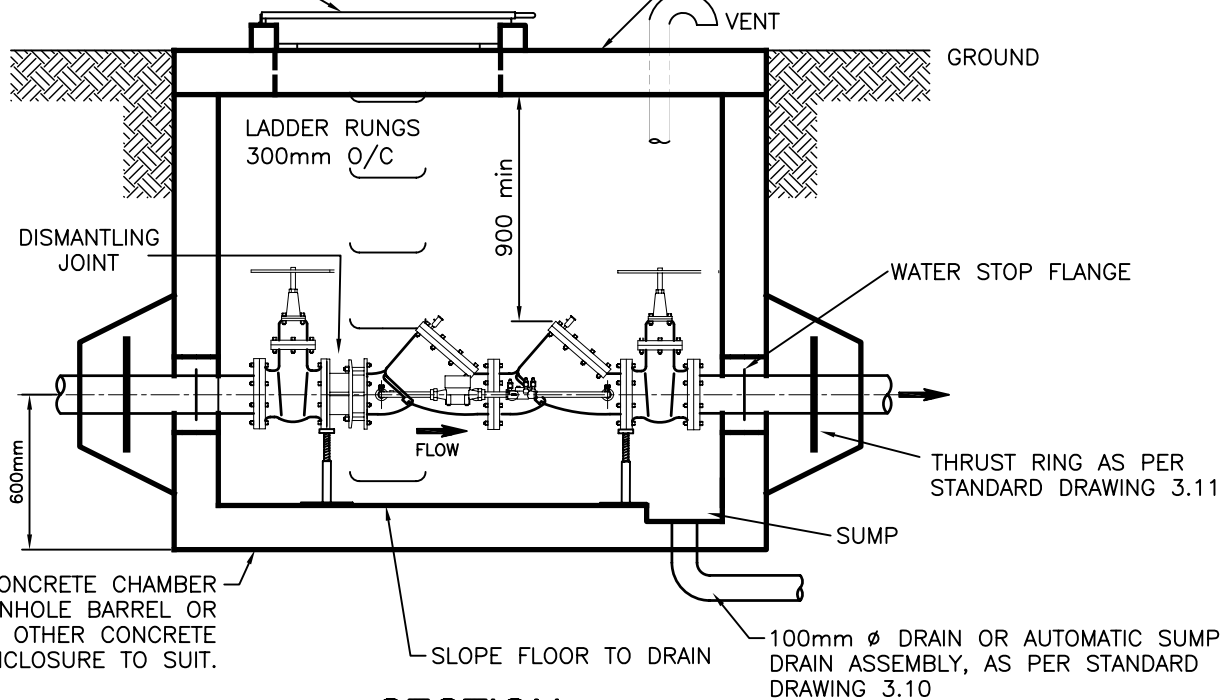
DISMANTLING JOINT
(ROMAC DJ400)



PLAN

ACCESS HATCH AS PER
STANDARD DRAWING 3.5
OR STANDARD MH &
FRAME

CONCRETE ROOF C/W
HATCH LID, MANHOLE
OR FULLY REMOVABLE COVER



SECTION

NOTES:

1. CHAMBER TO BE LOCATED/INSTALLED ON PRIVATE PROPERTY.
2. OWNER RESPONSIBLE FOR MAINTENANCE AND TESTING OF DOUBLE CHECK VALVE ASSEMBLY IN ACCORDANCE WITH THE CRD CROSS CONNECTION BYLAW.
3. THIS DRAWING DEPICTS MINIMUM REQUIRED DIMENSIONS AND DETAILS FOR PRIVATE INSTALLATION. IT IS PREFERABLE TO HAVE MORE WORKING SPACE THAN SHOWN. INSTALLATIONS FOR CRDWS WILL REQUIRE MINIMUM VAULT DIMENSIONS AS SHOWN ON STANDARD DRAWING 3.1



Making a difference...together

**TYPICAL DOUBLE CHECK
VALVE ASSEMBLY CHAMBER
100mm AND LARGER**

revision date: JUNE 2009	scale: N.T.S.
drawn: GA/DR/FH	checked: C. GOTTFRED
standard drawing no.:	

3.4