

MASTER PLAN 2020-2024



Galiano Island Parks
and Recreation Commission



TRAILS



RECREATION



PARKS



SHORE ACCESSSES

“... to acquire and manage community parks
and green spaces
and to provide recreation opportunities
for the people of Galiano
according to the needs and wishes
of the community.”

TABLE OF CONTENTS

- INTRODUCTION 1
 - Who We Are 1
 - Why This Master Plan 1
 - Our Vision - Our Mission 2
 - Where We Live 3

- COMMUNITY PARKS 4

- SHORE ACCESSES 6

- TRAILS 9

- CYCLING 11

- RECREATION 12

- CHALLENGES 13
 - Accommodating Population Growth and Seasonality 13
 - Adjusting to Changing Land Use 14
 - Maintaining Environmental Integrity 14
 - Providing a Range of Experiences 15
 - Developing Management Plans 15
 - Asset Management 15
 - Climate Change 16
 - Mobility Enhancements 16

- PRIORITIES FOR GIPRC 16
 - Short Term (2020-2022) 16
 - Medium Term (2023-2024) 17

- ROLES AND RESPONSIBILITIES 17
 - Fiscal Responsibility 17
 - Public Responsibility 18
 - Interactions with Other Agencies and Organizations 18

- MAPS 21
 - Map of Parks, Trails, and Shore Accesses 21
 - Currently Managed by the Galiano Island Parks
and Recreation Commission
 - Trail Network Planning Map /
Official Community Plan 2011 • A Concept 21

- APPENDICES 22
 - I Relevant Bylaws 22
 - II Documents Incorporated by Reference 23
 - III GIPRC Commissioners 1995 - 2019 25

Cover photo credits:

Recreation: Skateboarder/Galiano Lions Park by Lony Rockafella

Trails: Sturdies Bay Trail by Allan Forget

Parks: Tricia Park by Rene Zich

Shore Accesses: Morning Beach Shore Access by Allan Forget

INTRODUCTION

Who We Are

Under the statutory authority of Letters Patent from 1975, the Regional Board of the Capital Regional District (CRD) was given responsibility to acquire, develop, operate and maintain CRD community parks, develop and manage shore accesses and undertake community recreational programming. In February 1995, these responsibilities were delegated to a local authority through the establishment of the Galiano Island Parks and Recreation Commission for the purposes of administering community park and recreation services for Galiano Island.

The nine-member Commission consists of eight volunteer commissioners plus the elected CRD Director for the Southern Gulf Islands or alternate. Commissioners are appointed by resolution of the CRD Regional Board to serve two-year terms beginning on January 1. Appointments are staggered so that half of the commission stands for appointment in any year. Commissioners can serve for up to three consecutive terms.

The Commission's endeavours take place on the shared, asserted and unceded traditional territories of the Penelakut, Lamalcha and Hwlitsum First Nations; the shared, asserted and ceded traditional territories of the Tsawwassen First Nation; other Hul'qumi'num speaking peoples and any others who hold rights and responsibilities in and around what is now known as Galiano Island.

The Commission acknowledges the privilege of living, learning and caring for the land and one another on their shared territories.

Why This Master Plan

The Commission's Master Plan provides a direction and focus for the planning, acquisition, development, operation and maintenance of CRD community parks, shore accesses and hiking and multi-use trails and the planning and development of community recreational opportunities for the Galiano service area. To remain flexible and responsive to the needs and wishes of a changing community and to incorporate what we have accomplished since the last Master Plan, the Commission is committed to updating the Master Plan every five years. This plan represents a review and updating of the 2014-2019 Master Plan.

Review of the Master Plan began in the fall of 2018 with a program of community out-reach at public events to begin to identify possible enhancements to our facilities and to confirm the projects identified in the 2013 Master Plan. A survey was developed and mailed to all residences on Galiano in late 2018. The community out-reach program continued into the spring and early summer of 2019.

About 200 parks and recreation users responded to the Commission's consultation efforts as a direct response to the survey, in the form of a neighbourhood petition, on-line, as delegations and direct contact with Commissioners or during the out-reach activities.

The Commission's interaction with the community was conducted against the backdrop of external initiatives that also influenced the review. These included the Capital Regional District's (CRD) adoption of the Matthews Point Regional Park management plan; a CRD proposal to create a multi-modal road-side trail from Sturdies Bay to Montague Harbour through The Bluffs community park; the evolution of the Galiano Conservancy's Millard Learning Centre; the emergence of a need to provide access to the mobility impaired; and a CRD-mandated Asset Management Plan.

Our Vision - Our Mission

Our vision is to create and maintain a responsive system of well-managed community parks, shore accesses, trails and recreation opportunities, used and appreciated by Galiano residents and visitors.

The mission of the Galiano Island Parks and Recreation Commission is to acquire and manage community parks, shore accesses and hiking and multi-use trails and to provide recreation opportunities for the people of Galiano according to the needs and wishes of the community.

In 2019, the Commission administered a community parks budget of \$90,000. In addition, recreation grants to Island organizations totalling \$34,000 were made. The Commission has a capital reserve of \$70,000 to carry out Master Plan initiatives identified in this review.

The Commission respects and supports the Official Community Plan and other relevant plans adopted by

government agencies and works with them to implement our mandate. In providing equitable services to the whole Island, the Commission hears and gives consideration to local, neighbourhood opinions and desires.

Where We Live

From high on Galiano's long narrow spine, one can see the lights of two major metropolitan areas, yet the island is a world apart. Galiano Island supports a vibrant rural culture and a diversity of natural landscapes, from older forests and wetlands to dry woodlands and rock cliffs to sandstone shorelines.

Most of the population and services are clustered in the southern third of the island, close to the ferry terminal at Sturdies Bay, although there are widely dispersed clusters of rural development throughout the island. Much of the land (about 40%) is held in largely undeveloped forested parcels. Traditionally, residents and visitors enjoyed informal access to these undeveloped lands for trails and shore access, but over the last 30 years access under multiple ownership has become increasingly restricted. At the same time, about 18% of the island has been protected as parks, reserves, and covenanted lands, largely through concerted community effort. The public has access to most of these lands.

BC Ferries provides the primary link with the mainland and Vancouver Island through their ferry terminal at Sturdies Bay. The island road system consists of a loop road around the south of the island and to Montague Harbour and one main road running north the length of the island, with less-developed spurs serving the various rural neighbourhoods.

With an area of 5,810 hectares (14,356 acres), Galiano Island has a year-round population of only 1044 (2016 Census). This number swells dramatically with the seasonal influx of part-time residents and visitors. Only 48% of Galiano's 1170 private dwellings are occupied by residents (2016 Census). On busy holiday weekends, the population of Galiano Island can easily double. The dramatic seasonal nature of the full-time residential and visitor population creates a challenge for planning infrastructure and public services.

With 39% of residents over 65 and a median age of 61 (2016 Census), Galiano has a much older population than the

province as a whole. Only 8% of Galiano's residents are under 15. Across BC, seniors over 65 comprise only 18.3% of the population, and youths under 15 comprise 14.9%; and the median age is 43.

Living on an island does expose residents to environmental risks, as demonstrated by the winter storms of 2018-2019. While the Commission facilities were not extensively impacted and the Commission was able to maintain safe, secure access the storm underlined the need to strengthen the community school's ability to operate as a shelter-in-place resource. It has been suggested a vault toilet near the School/Library/Activity Centre could help fulfill that role and provide a higher level of service to those using the recreational facilities, playing fields and tennis court.

COMMUNITY PARKS

The Commission is only one of several – a minor one at that – providers of lands for parks, reserves, etc., on Galiano Island. Approximately 18% of Galiano Island is protected space, most preserved for public use in one form or another. Amongst others, BC Parks owns and manages about 40% of the parklands in six locations. Locally-supported organizations, chiefly the Galiano Club and the Galiano Conservancy Association, own and manage about 55%. CRD Regional Parks have acquired Matthews Point Regional Park on Active Pass. In addition, the BC Crown owns other lands that are used by the public, but not as designated parks. These parks and reserves are a resource for residents, visitors and tourists alike.

In addition to these resources, the Commission manages six community parks. Community parks are created primarily from land dedicated at time of subdivision. Section 992 of the *Municipal Act* requires developers in certain specified circumstances, to donate 5% of the subdivided land to be dedicated as parkland. This land is transferred to the CRD, to be administered by the Commission. In certain situations, a developer may be allowed to provide money in lieu of parkland, and this money is placed in the Commission's capital fund for acquiring parkland.

The Commission may also accept land from other government agencies or by donation from private sources who wish to have it retained for park purposes or to be preserved in a natural state. When considering a donation of land, the Commission takes into account the benefit to the community,

the costs of development, past use of the land and effects on the neighbourhood among other factors.

Maintenance and operating costs for parks vary from year to year. Funds from the Commission's annual Parks budget are used to maintain park resources to an acceptable standard. Funds not needed for maintenance and operation are carried over in a capital fund for parkland improvement and acquisition.

A management plan has been completed for the new park at the Island's north-east shore, known as DL79 (until it is formally renamed). The DL 79 management plan, based on community consultation, describes the allowed uses and proposed amenities to be developed in the park. The park provides outdoor recreation opportunities, including a shoreline access trail. Small footprint facilities (parking, a vault toilet, and trails) initially identified in the 2014 Master Plan were confirmed as high priority enhancements for the 2020-2024 Master Plan.

Community interaction through the Master Plan and park management plans affirmed the day use nature of the community parks managed by the Commission. No camping or over night parking is permitted.

The Commission also manages the Galiano Skate Park on land leased from the Galiano Lions. Sticks Park and Sticks West Park provide shore access links to the Community Heritage Forest managed by the Galiano Club.

None of the Commission's other community parks currently have any constructed facilities as yet.

The Commission will develop management plans as required for all of its parks in consultation with the community. It is expected that with increasing development associated with future subdivision on the island, the number of community parks will continue to increase. However, several rezonings associated with subdivision have resulted in significant acquisition of parkland by BC Parks with no requirement that further lands be committed to community parks as part of land development.

¹*The location of the designated parks, as well as other parkland*

Community Parks¹

CP1	Tricia Way Park
CP2	Sticks Park
CP3	West Sticks Community Park
CP4	Lord Park
CP5	DL 79 Park
CRP1	Galiano Skate Park ²

resources, are shown on the map "Galiano Island Public Trail Network and Protected Areas" following page 20 of this Master Plan.

² *The Galiano Skate Park, developed originally by the community and now managed by the Commission, is situated on land leased from the Galiano Lions.*

The Commission also oversees the Turtle Island Ecological area, an untouched, undeveloped island outcrop in Trincomali Channel.

A rental policy for the reservation of a Commission park or shore access for special public, private or commercial events is being developed. Please go to the Commission's website: www.crd.bc.ca/galianoparks/ for the most current information.

SHORE ACCESSES

Public access ways to the shoreline are created at the time of land subdivision under provisions of the *Land Title Act*. As part of the subdivision process, the developer generally is required to dedicate a 20-metre wide access every 200 to 400 metres of shoreline, depending on the size of the lots (Some of the older accesses were as narrow as 3m or as wide as 60m). These accesses are shown as public roadways on subdivision plans, though an actual road is often not constructed. The land is administered by the Ministry of Transportation and Infrastructure (MoTI). The original developer is not responsible for making these shore accesses safe or usable, and MoTI has no mandate to maintain or improve the accesses for public use.

That responsibility is assumed by the Commission under a licence of occupation held by the CRD since 2006. Improvement of the shore accesses has comprised a primary part of the Commission's work since its creation.

MoTI has identified 69 potential shore accesses and viewpoints, not including the other types of water accesses in parks and at government docks. The CRD licence of occupation to improve up to 47 of these will be reviewed in 2026.

The Commission has improved and maintains 32 shore accesses and a further five are under consideration for development. Ten more are available for improvement under the terms of the current licence of occupation, but are not scheduled for improvement in the foreseeable future.

The remaining 22 of the 69 shore accesses are considered less usable to the community for a variety of reasons and have not been considered for improvement at this time.

Shore accesses often represent remnants of undeveloped land that retain environmental, cultural, and archaeological values. Although the primary purpose of shore accesses is to provide the public with a route to the shoreline, the Commission recognizes the importance of protecting these other values. Before improving an access, the Commission inventories these features and considers ways to minimize impact on these assets.

When improving a shore access, the Commission's first responsibility is to make the access safe for the walking public. The work may involve clearing a path and constructing steps. The Commission puts up signs to clearly mark the access and to caution against trespass on neighbouring properties. Since shore accesses may also serve as emergency evacuation routes from the shore, the Commission installs locator numbers that are mapped with the island's emergency service coordinators. The Commission consults with MoTI to address parking and other issues raised by surrounding property owners. The Commission may also install amenities, such as benches, toilets or bike racks, at the shore accesses.

When assessing the priority for improving the remaining undeveloped shore access, the Commission, in consultation with the community, considers several criteria:

- Historical use (popular accesses for the community)
- Distribution in all neighbourhoods
- Ease of access
- Scenic values
- Least impact on the environment
- Provision for parking

The Commission also considers improving view points for important scenic values even if there is no access to the water.

A number of shore accesses have been enhanced by the installation of memorial benches, typically sited at a scenic viewpoint or an appropriate trail resting place. The Commission works with a donor to choose a site that meets the wishes of the donor and needs of the community. The donation pays for the fabrication and installation of a bench (including a cast memorial plaque). Once installed, the bench becomes public property and the Commission takes care of routine maintenance. Please refer to the Commission's website for the latest version of the memorial policy and cost information.

The Commission manages 47 shore accesses under the Licence of Occupation from MoTI. The Commission has improved these shore accesses:

3 Cain	4 Gulf Drive	5 Whiteware
10 Scorpion	11 Arbutus Point	13 Seatime
14 Mary Ann Point	15 Whipple	17 Zuker
23 Oceanview	24 Montague	26 Serenity
27 Azure	31 Retreat Cove	33 Lodge
34 Shaw's Landing	37 Trincomali	38 Spotlight Cove
45 Heather	48 Valerie's Place	49 Consiglio Trail
50 Dewinitz Trail	53 Tricia Way	55 Albion
57 Zachary	58 Salamanca	59 Morning Beach
60 Harper	61 Linklater	62 Twiss
65 Zelter	69 Gulfside	

Gulfside now incorporates the former shore access known as Ten Foot Lane (#52).

The Commission's Licence of Occupation also includes these shore accesses, but the Commission has not scheduled their improvement:

6 Barbara Close	8 Anna	16 Georgeson Bay
21 Stewart	24 Montague	35 Zitka
44 Shannon	63 Harris	64 Zenner
66 Murchison	67 New	

The Commission has scheduled the following accesses for future improvement as a result of this review:

9 Wesley	12 Zayer
15 Whipple/Matthews	29 Graham

Work has begun to assess the feasibility of the Zayer shore access which was identified in the previous Master Plan and is supported by a community petition. A significant capital investment will be made in improving the beach access for Whipple/Matthews. Neighbourhood discussions have begun concerning the suitability of a Graham shore access.

Besides these shore accesses managed by the Commission, Galiano Island has 22 more accesses under the jurisdiction of MOTI. Though open to the public, these accesses have difficult terrain or other aspects that make them less useful. These accesses are not included on the Commission's current Licence of Occupation.

TRAILS

Trails managed by the Commission provide non-motorized access (for hikers and equestrians) between and to selected destinations. Cycling is not allowed on Commission trails or in its Community Parks.

Trails may run through existing parks, exist on their own as a form of linear park, as easements or even casual paths through private property. With the accomplishment of shore access improvements since the Commission's founding, especially near developed areas without shore access, the Commission realized that the priority of trail development needed to take on greater importance in the Commission's future overall program. In 2006 the Commission retained a consultant to advise it. The consultant's proposed Trails Network Plan was incorporated into the 2007 Master Plan. This review and updating of the Master Plan has affirmed that the heightened emphasis in program priority will continue for the foreseeable future. The Commission also strongly applauds the decision of the Galiano Local Trust Committee of the Islands Trust to incorporate the Trails Network Plan as an integral part of the Official Community Plan in 2011.

In former times, when over half of Galiano Island was a tree farm, the forest company permitted casual access through their lands via trails and logging roads. Now that the forest holdings have been parcelled out into individual properties, the creation of extensive trail networks has become more complicated.

Trail planning and building on our island has now passed from the earlier "open forest" scenario to a more formalized state.

Even where the present owners welcome trails, there is no long-term guarantee that the community will have access in the future. New owners may decide they do not wish such trails. A more formal process of trail planning and dedication has become necessary.

The Commission has been working with the community to plan for a cohesive trail network, anchored in parks and other public property (e.g. highway rights-of-way), as well as dedicated accesses through private lands creating linear parks with secure tenure, solid liability coverage, systematic standards, and uniform maintenance protocols.

The Commission has the responsibility to review all referrals from the Galiano Local Trust Committee on rezoning and subdivision applications to see if the Trails Network Plan can be advanced through individual applications.

The Commission continues to support work by the Galiano Trails Society (GTS) to develop an organized trails system on lands in private ownership. Although the Commission continues to believe that permanent easements accommodating trails are critical to a permanent system, it also acknowledges that trails across private lands, some on easements, but many not, are also essential to a completed trails system and recreation for residents, visitors and guests alike. Now that the Commission's *Trails Network Plan* has been incorporated into Galiano Island's OCP, trail creation and dedication by the Commission has become integrated with the Islands Trust transportation plan and policy for the island. The Commission has supported the recent initiative of the newly created Southern Gulf Islands Economic Development Commission's *Experience the Gulf Islands* project and looks forward to its completion and even greater impetus to develop a comprehensive trails system for non-motorized modes of transportation and recreation.

Trails Maintained by GIPRC¹

T1	Sturdies Bay Trail
T2	Bell Trail (DL 66)
T3	Winstanley Road

¹ The location of the designated trails is shown on the map "Galiano Island Public Trail Network and Protected Areas"

As a result of a re-zoning of the Millard Learning Centre, the Galiano Conservancy Association (GCA) donated a right of way linking Porlier Pass Road to the shore of Trincomali Channel as a community benefit. In cooperation with the CGA, the Commission will construct and manage a 1.75-km trail to the Island's western shoreline.

Consultation on the Master Plan showed a strong community desire to improve the 2 km-long Sturdies Bay Trail. The priority for the Commission is to assess the potential of linking the BC Ferry terminal across Burrill Road with the southern trail head. There was also a strong interest expressed in extending the northern reach of the Trail to both Page Drive and Ellis Road.

As a result of a growing desire to ensure our Island recreational facilities are accessible to the mobility impaired, the Commission is undertaking an assessment of up-grading its trails and shore accesses. This is in addition to the preventative maintenance and ongoing enhancement work undertaken on a routine basis to improve the usability of our pedestrian trails.

CYCLING

Travel by bicycle is not only gaining popularity as a means of transportation, it has also become a leading and rapidly growing form of recreation. Its popularity will likely continue to grow in the future. The Commission views that the needs of many cyclists will be accommodated on multi-use trails as a result of the implementation of the *Trails Network Plan*.

However, many recreational cyclists, especially in rural areas such as Galiano Island, use the public highways. During warmer months, Galiano Island's rural roads accommodate hundreds of local and visiting cyclists on a daily basis. Many use the public roads to reach other recreation opportunities, including camp sites provided in provincial parks. The Economic Development Commission's *Experience the Gulf Islands* program is placing considerable emphasis on developing safer cycling and recreation opportunities on Galiano and other of the Southern Gulf Islands.

In addition to supporting the development of multi-use trails accommodating cyclists, the Commission has a role to play in advocating the development of safer facilities for use by cyclists in getting around Galiano Island and traveling to other recreation opportunities on the Island. The Commission has noted that one of the most hazardous cycling routes on

Galiano Island is Sturdies Bay Road between the BC Ferries dock and the junction with Georgeson Bay Road and Porlier Pass Drive. While the Sturdies Bay Trail was developed so that hikers and pedestrians would have a safe alternative to walking on the road, the current trail is not useable by wheeled vehicles, including strollers. A further alternative needs to be developed on an urgent basis in co-operation with MOTI and the CRD. Likely beginning with the development of improved and widened verges on areas with heavier cycling activity, hills or poor visibility, the safety of all of the Island's roads for cycling needs to be improved. The Commission will work with the MOTI and the CRD in advocating for these improvements.

The Commission is looking forward to working with the CRD to expedite its proposed multi-use trail on Burrill Road once the pilot section of a trail is completed on Mayne Island.

RECREATION

Galiano is home to active persons of all ages. The Commission is charged with the duty of utilizing the tax dollars paid by local taxpayers to benefit as wide a spectrum of our community as possible by addressing diverse interests. Our goal is to allocate the funds in the recreation budget to events and activities that address these interests and needs.

Towards this end the Commission has provided support to pre-school programs; to activities for school-age children; to the fitness centre for persons of all ages; to sports activities; to continuing education programs, workshops and events; to summer children's programs and to community events and recreation activities.

These activities vary from year to year with the changing needs and interests of the community. The Commission strives to meet the wishes of all groups as fairly as possible within the constraints of the monies available. The Commission considers requests for funding on a yearly basis. Though most of the funding is disbursed once a year, the Commission may retain a small contingency to cover unforeseen funding needs and opportunities throughout the year.

The Commission defines a recreation program as a formally organized community activity for the purpose of amusement or pleasure and is considered "fun". This chosen activity is done in one's leisure or discretionary time.

Funded recreation activities should benefit the community in general. Programs viewed favourably offer active participation, are broad in appeal, offer good value and are inclusive. Programs should help remove barriers to recreation and may help to reduce social isolation and improve mental, emotional and physical well-being.

Funding for a recreation program may be used for purchasing moveable recreation equipment, operating supplies, room rentals or wages for programmers. Funding cannot be used for capital equipment or upgrades. Funding recipients are expected to provide a written report to the Commission on how their funding was utilized. This must be submitted before applying for subsequent funding.

The Commission typically calls for funding applications in the spring. Please refer to our web site for further information, application and reporting forms and other details.

The Commission may put on recreation programs itself, but generally the Commission provides financial support to community organizations who organize and carry out recreational programs.

One of the Commission's most important recreation partners is the Galiano Activity Centre, which hosts a diverse range of recreation and fitness programs for the community. The majority of the Commission's recreation funding is directed to the Activity Centre in support of their programs.

Other Island organizations and groups receiving recreation grants have included Coro Galiano, the Galiano Club's community food program, the Galiano Health Care Society, the Scottish Country Dance Association, the Galiano Golf Club, the Community School's Parent Advisory Committee, the North Galiano Community Association, the Galiano Trails Society, the Galiano Player,s and the Galiano Festival Society.

CHALLENGES

Accommodating Population Growth and Seasonality

A short ferry ride from the major metropolitan areas of Vancouver and Victoria, Galiano attracts people looking to live in a small rural community, those wishing to have a vacation home near the sea and many visitors from the metropolitan centres. Although there appears to have been a recent surge

in part-time residents, like other communities in this mild south-west corner of the province, Galiano faces fluctuating population growth for both permanent residents and seasonal residents. While the number of full-time residents increased by 3.5% annually between 2001 and 2006, their numbers decreased by 9.5% in the five years between 2006 and 2011 and a further 8% by 2016. The Commission must plan for services that meet the needs of current and future residents of the area. The vicissitudes in numbers of full- and part-time residents underscores the challenges of planning for the future.

Tourism also accounts for a striking seasonal increase in island population. Although the Commission's mandate is to provide parks and recreation services for the community, visitors put strong seasonal pressures on these services, especially on community parks, trails and shore accesses.

Adjusting to Changing Land Use

At the same time as more people are coming to live and stay on Galiano, large forested sections of the island previously open informally to the public are being closed off as private property. Residents and visitors alike are thus being funnelled into smaller public spaces for their outdoor recreation.

Land subdivision and development means increased population pressures on parks and recreation, but in the process of subdivision new community parks and publicly accessible green spaces are often created. The Commission plays a critical advisory role, through a protocol with the Local Trust Committee of the Islands Trust, as an advocate for new park dedications and improvements that provide usable park resources for the community.

Maintaining Environmental Integrity

The small community parks managed by the Commission are fragments of the island's original ecosystems, usually with some degree of ecological alteration from past land uses. The community has expressed a strong interest that the parks be managed to protect sensitive environmental values while still allowing for public use. Similarly, the routing of trails, either through these parks or on other rights of way, needs to minimize the disturbance to fragile ecological features.

As over much of the island, non-native plants have invaded

the community parks and shore accesses, and the Commission faces a long-term commitment to restoring the natural character of these lands.

The Commission can play a leading role in public education about respectful use of the community's public areas.

Providing a Range of Experiences

Galiano's parks and recreation programs play an important role in the lives of residents. Islanders enjoy the parks, trails, and shore accesses for walking, picnicking, beachcombing, swimming, socializing and nature study. Many islanders also use the trails for exercise and for getting around the island. Recreation programs provide social opportunities for a wide range of outdoor and indoor activities. The Commission has the responsibility of assessing and accommodating the diverse needs of the community for parks and recreation services.

Developing Management Plans

The Commission is charged with managing properties for the benefit of the community over the long term. Given the nature of the Commission as a group of community-minded volunteers that changes yearly, management plans serve as an essential tool for consistent and responsible stewardship of these lands. The Commission is committed to developing written management plans for properties in its jurisdiction. These plans will be created in full consultation with the community and will be reviewed periodically.

Asset Management

The Capital Regional District requires all of its Boards, Services and Commissions to implement an on-going asset management plan to ensure the timely and orderly maintenance of facilities and to plan for their replacement.

This will require the Commission to accurately inventory the community parks, shore accesses and trails; assess the risks; place a value on them; and prepare a replacement plan. The Commission is proposing to fund the asset management plan from its capital reserve. This will reduce the funds available to enhance and extend parks and recreation services on Galiano, but will ensure proper preventative maintenance and timely replacement of assets.

Climate Change

Potential impacts of climate change that have been identified by both the CRD and the Island Trust include year round temperature increases with extended, hotter and dryer summers; wetter falls and warmer winters; increased fire risk; more inclement and extreme weather events; rising sea levels and storm surge damage; and species shift.

The Commission will work to help realize those organizations' climate action strategies by focusing on adapting our planning, operations and maintenance activities to increase the resilience of our natural assets for the uncertainties ahead. An added emphasis on cooperative public education and preventative outreach activities can be anticipated.

Mobility Enhancements

With an aging population, there is a need to assess the feasibility and practicality of enhancing Commission facilities with new infrastructure to accommodate the mobility challenged. The Commission will seek partnerships to identify, design and install appropriate infrastructure to ensure continued access by all members of our community.

PRIORITIES FOR GIPRC

Subject to the availability of budget and other resources, the following priorities and timing summarize the activities envisaged by the Commission's Master Plan Review over the five year period from 2020 to 2024:

Short Term (2020-2022)

- i. Formally name and implement the DL79 park management plan with trail construction, landscaping, signage, parking and benches and tables. Installation of a vault toilet.
- ii. Undertake engineering and archeological assessments and construct the Zayer shore access, if feasible; undertake an engineering study for the Matthews/Whipple beach access.
- iii. Implement an asset management plan.
- iv. Conduct an accessibility assessment for mobility impaired enhancements.

v. Sturdies Bay trail improvements and evaluate an extension of the trail to Burrill Road.

Medium Term (2023-2024)

i. Install vault toilets at Gulfside (69) and Activity Centre area.

ii. Construct Matthews/Whipple stairs to beach;

iii. Construct Millard Learning Centre shore access/trail; Wesley Road shore access and Graham shore access; and

iv. Asset replacement

ROLES AND RESPONSIBILITIES

Fiscal Responsibility

Funds for the acquisition and maintenance of parks and for provision of recreation programs comes from two separate yearly levies on the tax base of the Commission’s service area. The maximum tax rate for these levies is set by bylaw. The actual rate depends on the Commission’s needs and historically has been less than the maximum. Funding for parks may also come from monies paid by a developer in lieu of dedicated parkland. The Commission may also apply for grants for specific projects and can accept donations. All donations are eligible for a tax receipt issued by the Capital Regional District.

With the approval of the Capital Regional District Board and the Director, the Commission can borrow money through the CRD. A referendum may be required to get taxpayer approval.

The Commission must exercise fiscal responsibility and effective planning to ensure that appropriate high quality park resources and recreation programs are provided at an acceptable cost to Galiano island taxpayers.

Each year the Commission prepares five-year operating and capital budgets, which are available for public view. The budgets show the source of the funds and how they are spent. Funds for recreation programs are by law required to be disbursed in the year received. Funds for parks may be spent in that year or carried over to fund capital projects, as indicated in the budget. With funds from the parks budget, the Commission maintains park resources to an acceptable standard and at an acceptable cost to the taxpayer.

The Commission operates as a volunteer commission under the jurisdiction of the Capital Regional District. The Commissioners receive no salaries or other payment for services.

The Capital Regional District provides liability insurance protection for lands under the jurisdiction of the Commission and for Commissioners and other volunteers working on Commission projects. The Commission works with the CRD Risk Management office to maintain safe conditions on its properties and to minimize risk to volunteers and the public.

Public Accountability

The Commission can operate effectively only with the support and the interests of the public. The Commission must, in the course of carrying out its mandate and working towards the goals stated in the plan, determine the needs and wishes of the community.

The regular, scheduled meetings of the Commission are publicized and open to the public.

The Commission holds periodic, well-publicized community meetings to present information on parks and recreation, report on Commission activities, gather information from the public, present new ideas, and encourage dialogue on the parks and recreation planning and development process.

The Commission communicates with the community through booths at public events; regular news columns; and information bulletins posted on its own bulletin board and on other community bulletin boards; and through its own web site and on social media.

Commissioners remain open and available to discuss public interests and concerns relating to parks and recreation programs.

When park designation, development, or use changes are being contemplated, the Commission will consult with residents and owners of adjacent properties.

Interactions with Other Agencies and Organizations

The Commission is part of a network of agencies and organizations that manage parklands, protected areas,

reserves, and public lands on Galiano and adjacent islands. These include:

- Crown
- Province of British Columbia (BC Parks)
- Province of British Columbia (Ministry of Transportation)
- Capital Regional District (regional parks)
- School District 64
- Galiano Club
- Galiano Conservancy
- Islands Trust Fund

Parklands, protected areas and other public lands owned or managed by the Commission, while numerous (6 parks and ultimately over 40 improved shore accesses), are a minor part of the public park areas on Galiano Island. When planning for park acquisition and management, the Commission considers how the lands under its own jurisdiction fit in with parks and open space managed by other organizations. Where community parks abut other public land or protected areas, the Commission works with the associated organization to develop an integrated management plan that considers the juxtaposed parcels as a whole management unit to maximize environmental connectivity and minimize duplication of services.

Because of the intention of making shore accesses safely accessible, the Commission has a close working relationship with MoTI, which has jurisdiction over all shore accesses. The CRD currently holds a Licence of Occupation from MoTI for improving selected shore accesses under specific terms and conditions. This agreement comes up for review and renewal in 2026.

The Commission has a protocol agreement with the Galiano Island Local Trust Committee (LTC) to coordinate administrative procedures during the acquisition of parkland under Section 941 of the *Local Government Act* (formerly Section 992 of the *Municipal Act*) when land is subdivided. The LTC refers to the Commission all such applications for subdivision and other applications, such as during rezoning, which relate to land with identified park or trail potential, and the Commission evaluates the application with regard to its effect on parks, trails, and shore access objectives. It also needs to be understood by all that the largest future increments in overall parklands available to Galiano Islanders may be through 'community benefits' as part of rezoning applications.

While the Commission can manage these increments, the recent experience is that other organizations, chiefly BC Parks and the Galiano Club, may ultimately manage these lands. As in the instances of the recent acquisition of DL 87 near the north end of the Island and Collinson Point in the south end or the creation of the new park at Matthews Point, BC Parks and CRD (Regional Parks) also continue to acquire parklands and reserves by purchase in their own right.

The Commission will continue to do its part in putting forth the needs and desires of Islanders and managing those properties under its control and influence.

The Commission will likely enter into partnerships with other Island organizations to support resourcing of trails and other facilities on lands owned or controlled by public sector organizations, where there is an interest in land held by the CRD. These investments will enhance Galiano Island's public realm and meet the demand and need for parks and recreation opportunities by full and part-time residents and visitors to the Island.

MAPS

Map of Parks, Trails, and Shore Accesses Currently Managed by the Galiano Island Parks and Recreation Commission

[see accompanying map]

Trail Network Planning Map / Official Community Plan 2011 • A Concept

[see accompanying maps]



Galiano Island Parks & Recreation Commission Community Parks, Trails and Shore Accesses

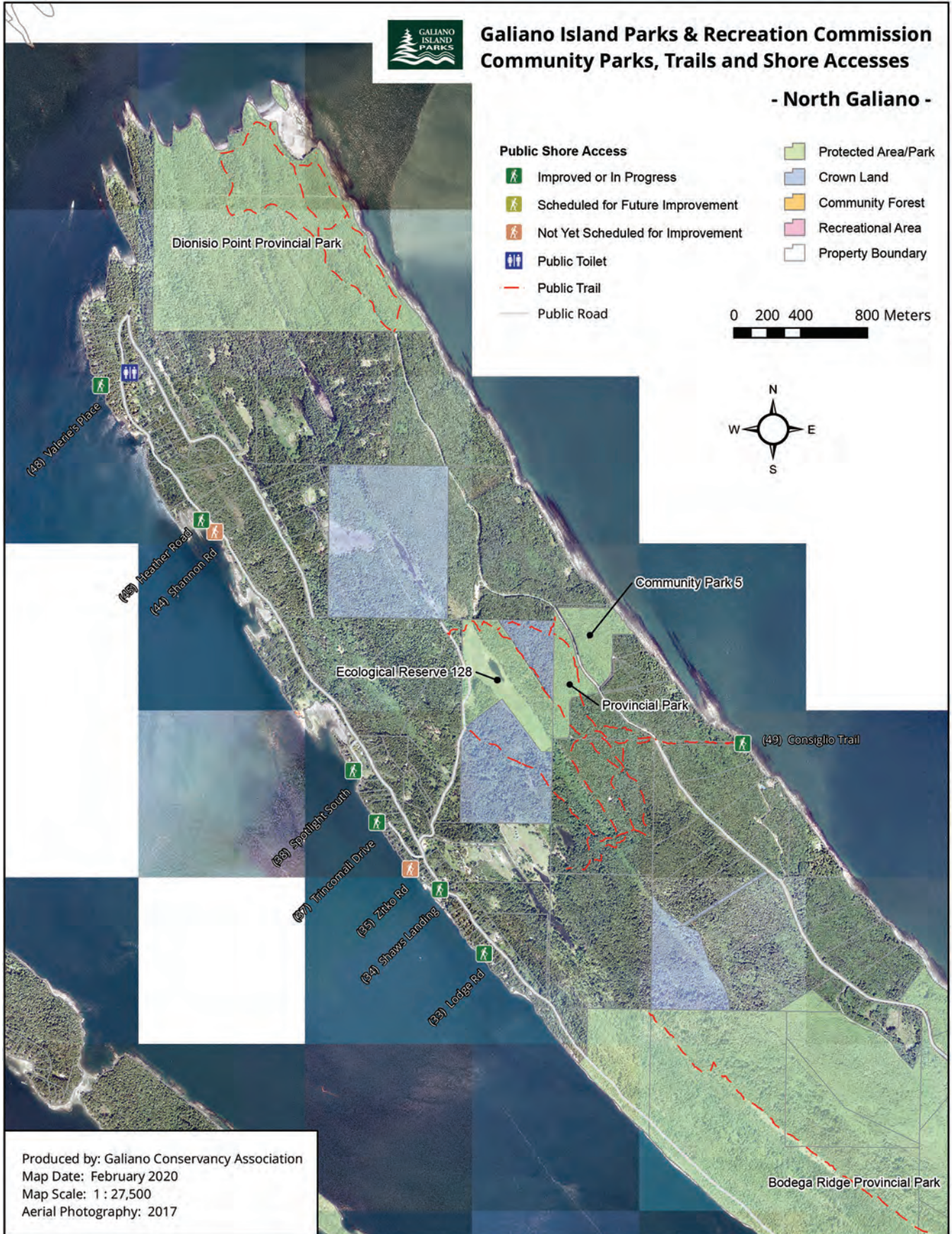
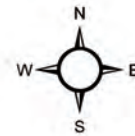
- North Galiano -

Public Shore Access

- Improved or In Progress
- Scheduled for Future Improvement
- Not Yet Scheduled for Improvement
- Public Toilet
- Public Trail
- Public Road

- Protected Area/Park
- Crown Land
- Community Forest
- Recreational Area
- Property Boundary

0 200 400 800 Meters



Produced by: Galiano Conservancy Association
 Map Date: February 2020
 Map Scale: 1 : 27,500
 Aerial Photography: 2017



Galiano Island Parks & Recreation Commission Community Parks, Trails and Shore Accesses

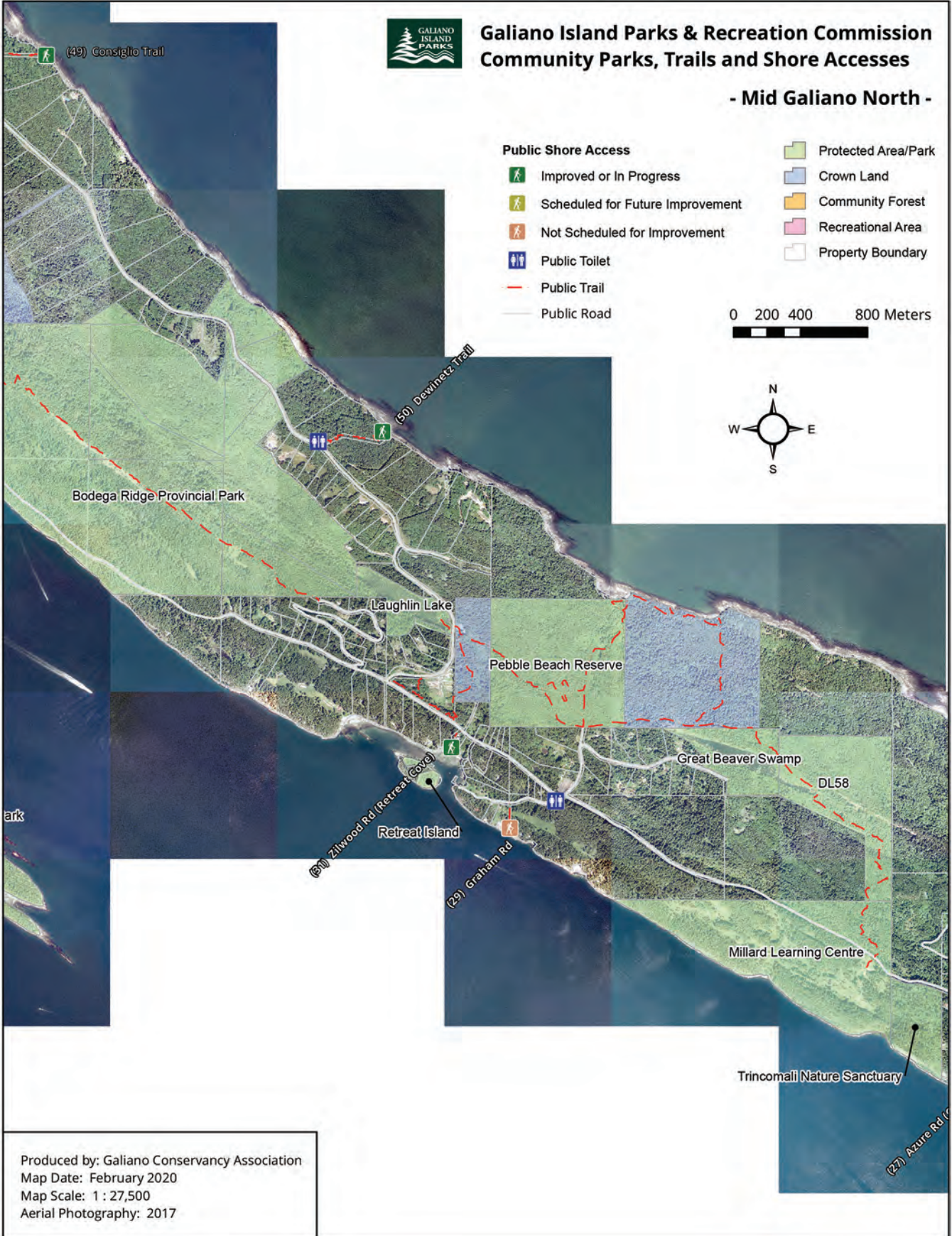
- Mid Galiano North -

Public Shore Access

- Improved or In Progress
- Scheduled for Future Improvement
- Not Scheduled for Improvement
- Public Toilet
- Public Trail
- Public Road

- Protected Area/Park
- Crown Land
- Community Forest
- Recreational Area
- Property Boundary

0 200 400 800 Meters



Produced by: Galiano Conservancy Association
 Map Date: February 2020
 Map Scale: 1 : 27,500
 Aerial Photography: 2017



Galiano Island Parks & Recreation Commission Community Parks, Trails and Shore Accesses

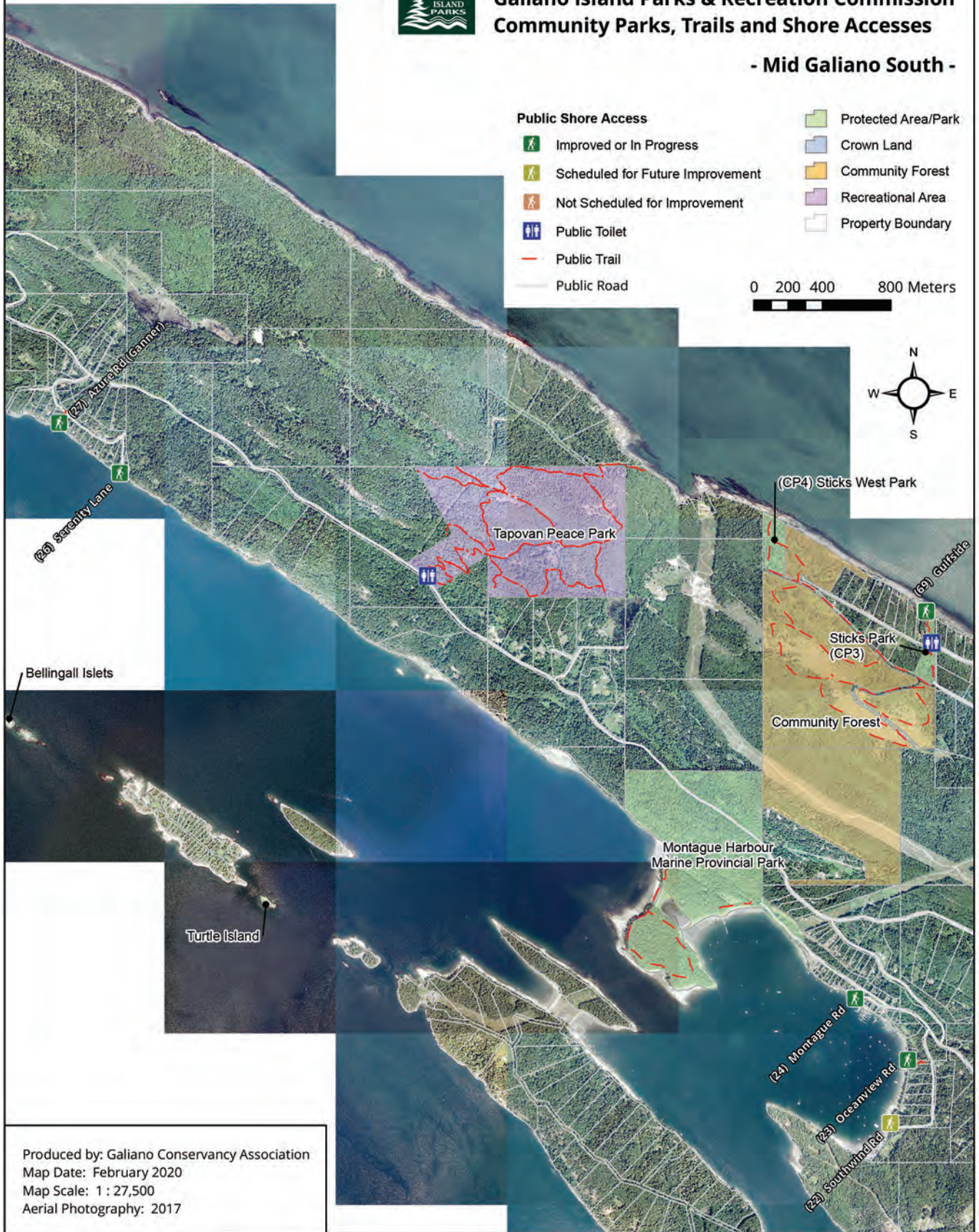
- Mid Galiano South -

Public Shore Access

- Improved or In Progress
- Scheduled for Future Improvement
- Not Scheduled for Improvement
- Public Toilet
- Public Trail
- Public Road

- Protected Area/Park
- Crown Land
- Community Forest
- Recreational Area
- Property Boundary

0 200 400 800 Meters



Produced by: Galiano Conservancy Association
 Map Date: February 2020
 Map Scale: 1 : 27,500
 Aerial Photography: 2017



Galiano Island Parks & Recreation Commission Community Parks, Trails and Shore Accesses

- South Galiano -

Park

Public Shore Access

- Improved or In Progress
- Scheduled for Future Improvement
- Not Scheduled for Improvement
- Public Toilet
- Public Trail
- Public Road

- Protected Area/Park
- Crown Land
- Community Forest
- Recreational Area
- Property Boundary

0 200 400 800 Meters



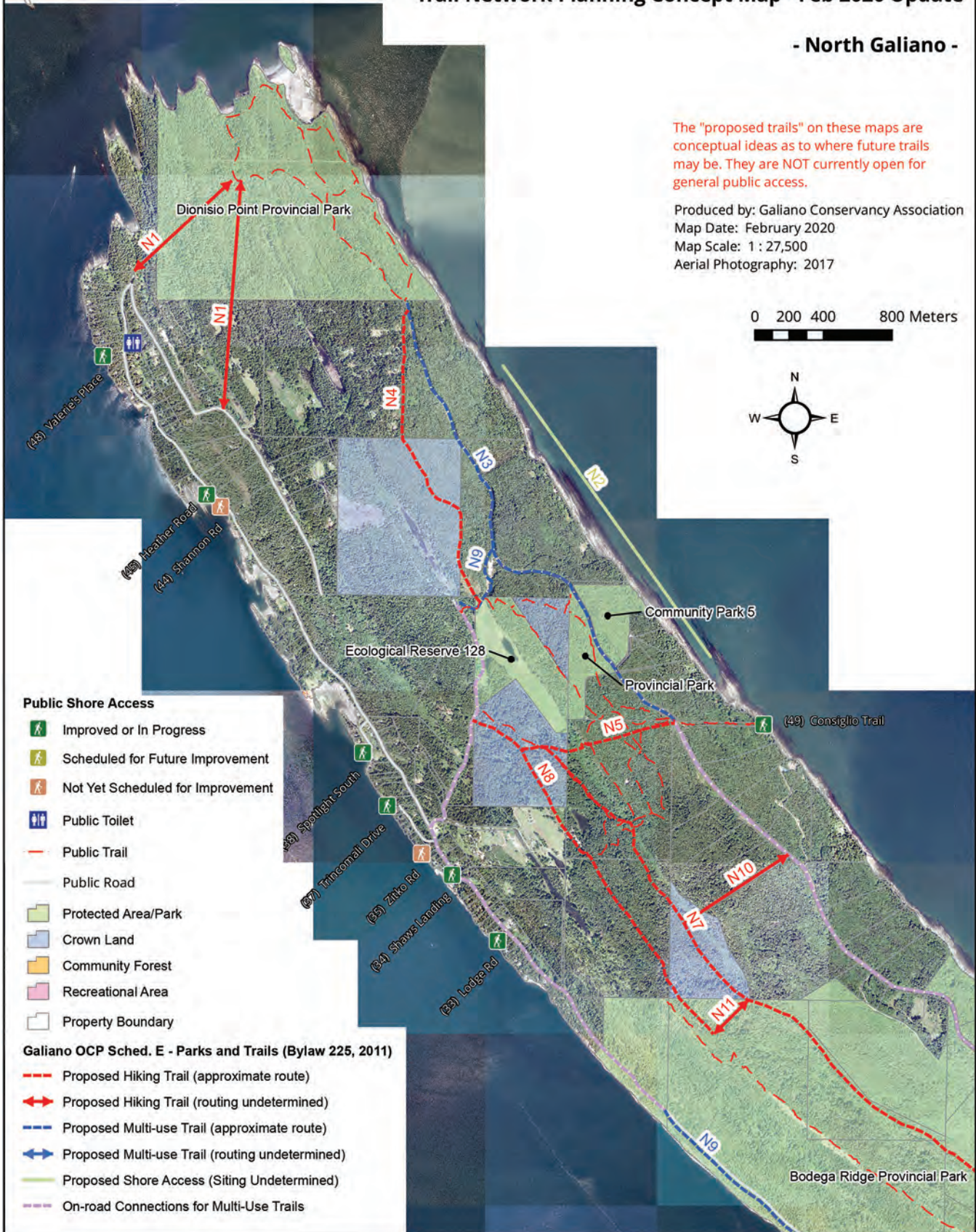
Trail Network Planning Concept Map - Feb 2020 Update

- North Galiano -

The "proposed trails" on these maps are conceptual ideas as to where future trails may be. They are NOT currently open for general public access.

Produced by: Galiano Conservancy Association
 Map Date: February 2020
 Map Scale: 1 : 27,500
 Aerial Photography: 2017

0 200 400 800 Meters



Public Shore Access

- Improved or In Progress
- Scheduled for Future Improvement
- Not Yet Scheduled for Improvement
- Public Toilet
- Public Trail
- Public Road
- Protected Area/Park
- Crown Land
- Community Forest
- Recreational Area
- Property Boundary

Galiano OCP Sched. E - Parks and Trails (Bylaw 225, 2011)

- Proposed Hiking Trail (approximate route)
- Proposed Hiking Trail (routing undetermined)
- Proposed Multi-use Trail (approximate route)
- Proposed Multi-use Trail (routing undetermined)
- Proposed Shore Access (Siting Undetermined)
- On-road Connections for Multi-Use Trails

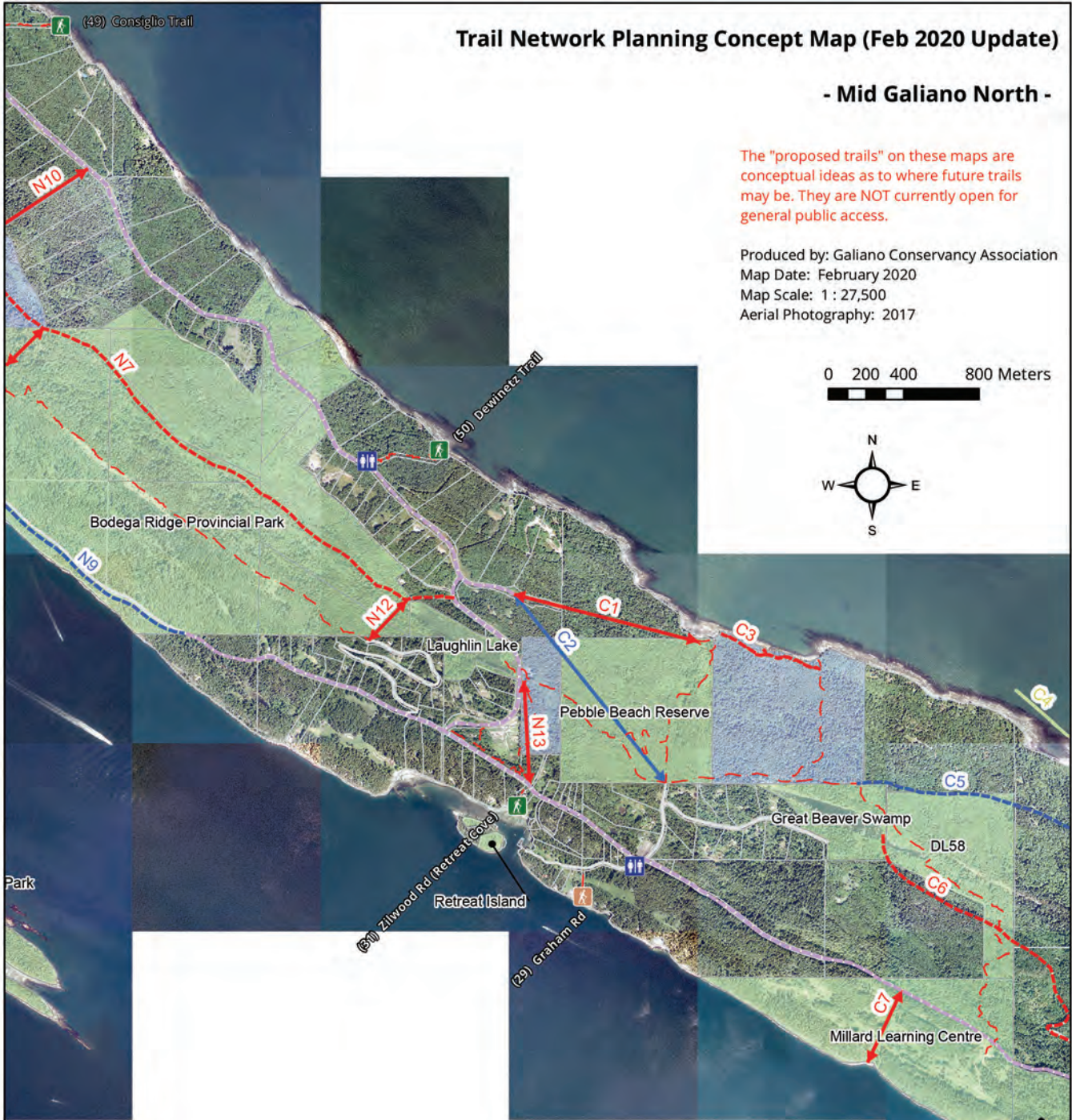
Trail Network Planning Concept Map (Feb 2020 Update)

- Mid Galiano North -

The "proposed trails" on these maps are conceptual ideas as to where future trails may be. They are NOT currently open for general public access.

Produced by: Galiano Conservancy Association
 Map Date: February 2020
 Map Scale: 1 : 27,500
 Aerial Photography: 2017

0 200 400 800 Meters



Public Shore Access

- Improved or In Progress
- Scheduled for Future Improvement
- Not Scheduled for Improvement
- Public Toilet
- Public Trail
- Public Road

Galiano OCP Sched. E - Parks and Trails (Bylaw 225, 2011)

- Proposed Hiking Trail (approximate route)
- Proposed Hiking Trail (routing undetermined)
- Proposed Multi-use Trail (approximate route)
- Proposed Multi-use Trail (routing undetermined)
- Proposed Shore Access (Siting Undetermined)
- On-road Connections for Multi-Use Trails

- Protected Area/Park
- Crown Land
- Community Forest
- Recreational Area
- Property Boundary

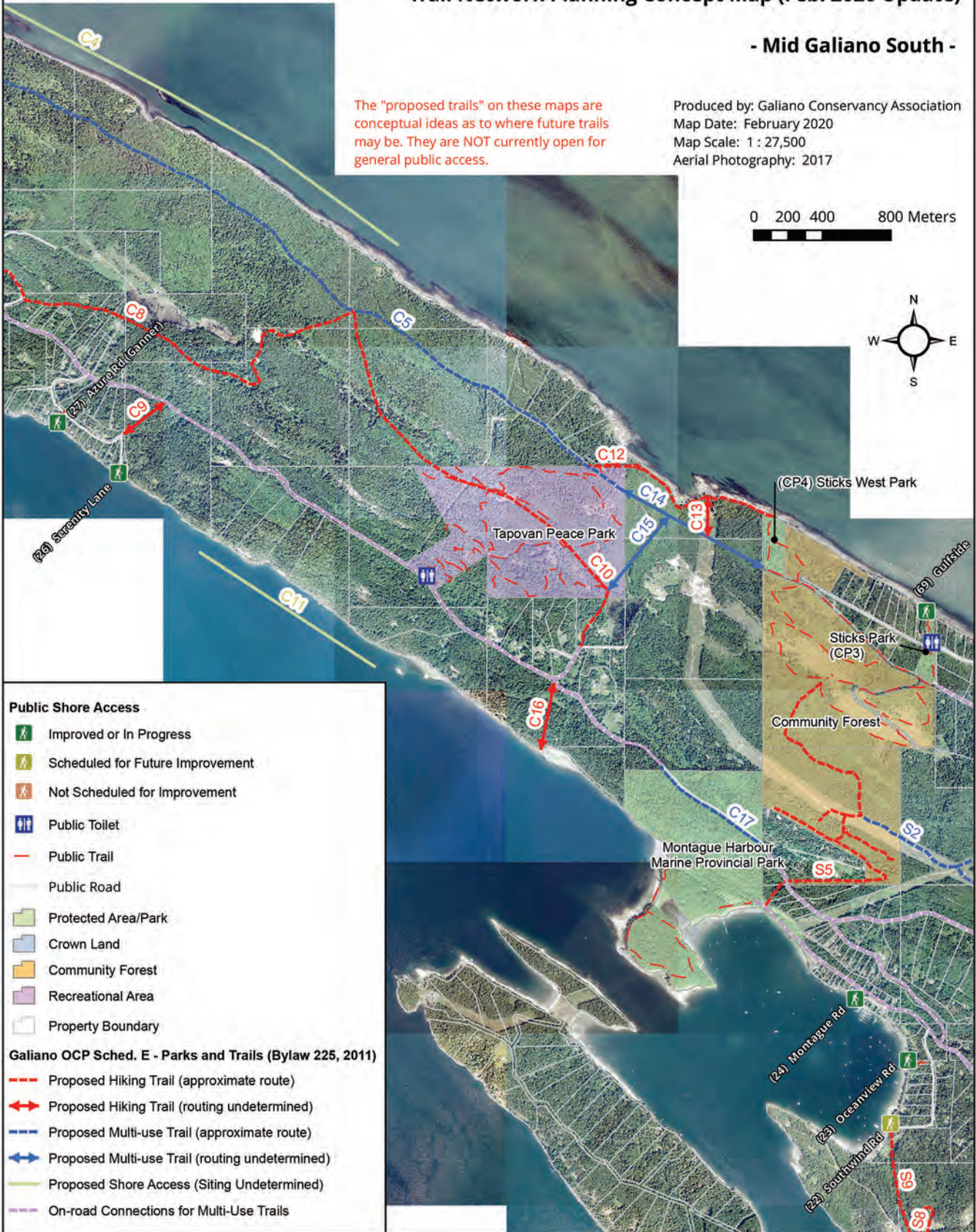
Trincomali Nature Sanctuary
 (27) Azure Rd

Trail Network Planning Concept Map (Feb. 2020 Update)

- Mid Galiano South -

The "proposed trails" on these maps are conceptual ideas as to where future trails may be. They are NOT currently open for general public access.

Produced by: Galiano Conservancy Association
 Map Date: February 2020
 Map Scale: 1 : 27,500
 Aerial Photography: 2017



Public Shore Access

- Improved or In Progress
- Scheduled for Future Improvement
- Not Scheduled for Improvement

Public Toilet

Public Trail

Public Road

Protected Area/Park

Crown Land

Community Forest

Recreational Area

Property Boundary

Galiano OCP Sched. E - Parks and Trails (Bylaw 225, 2011)

- Proposed Hiking Trail (approximate route)
- Proposed Hiking Trail (routing undetermined)
- Proposed Multi-use Trail (approximate route)
- Proposed Multi-use Trail (routing undetermined)
- Proposed Shore Access (Siting Undetermined)
- On-road Connections for Multi-Use Trails

Trail Network Planning Concept Map (Updated Feb. 2020) - South Galiano -



APPENDICIES

I Relevant Bylaws

The activities of the Galiano Island Parks and Recreation Commission are defined by a set of bylaws enacted by the Capital Regional District (CRD). The relevant bylaws are summarized here; the full text of the bylaws is available from the CRD.

CRD Bylaw No. 3486, 14 November 2007: Continues the Galiano Island Parks and Recreation Commission; replaces Bylaw No. 2968.

CRD Bylaw No. 3285, 10 August 2005: Exempts the Galiano Golf and Country Club from property taxes.

CRD Bylaw No. 3187 (consolidated), 9 June 2006: Regulates the rules of procedure for the CRD Board; as a committee of the CRD, the Commission uses rules of procedure consistent with this bylaw.

CRD Bylaw No. 3121, 12 November 2003 [REPEALED]: Amended Bylaw No. 2968 by altering certain procedural rules regarding term limits for commissioners.

CRD Bylaw No. 2968, 10 April 2002 [REPEALED]: Continued the Galiano Island Parks and Recreation Commission; replaced Bylaw No. 2374.

CRD Bylaw No. 2873, 14 March 2001 [REPEALED]: Amended Bylaw No. 2374 by adding certain procedural rules regarding term limits for commissioners; replaced by part of Bylaw No. 2968.

CRD Bylaw No. 2851, 13 December 2000: Established the capital reserve fund for the Commission.

CRD Bylaw No. 2404, 10 July 1996: Redefined the Community Parks service area for the Commission to coincide with the boundaries of the Galiano Island Local Trust Committee; amended Bylaw No. 2294.

CRD Bylaw No. 2390, 12 June 1996: Redefined the Community Recreation Program service area for the Commission to coincide with the boundaries of the Galiano Island Local Trust Committee; amended Bylaw No. 1463.

CRD Bylaw No. 2374, 12 June 1996 [REPEALED]: Established the Galiano Island Parks and Recreation Commission to manage the recreation and community parks services on Galiano; replaced by Bylaw No. 2968.

CRD Bylaw No. 2295, 22 February 1995: Defined the Community Recreation Program service area for the Commission and set the tax levy for recreation.

CRD Bylaw No. 2294, 22 February 1995: Defined the Community Parks service area for the Commission and set the tax levy for parks; amended by Bylaw No. 2404.

CRD Bylaw No. 2292, 22 February 1995 [REPEALED]: Established the Galiano Island Parks and Recreation Commission to manage the recreation and community parks services on Galiano; replaced by Bylaw No. 2374.

CRD Bylaw No. 984, 13 January 1982: Established a service area through which the CRD would participate in the cost of construction of the Galiano Activity Center.

Besides these specific bylaws, the general bylaws that apply to the CRD in general, such as those governing the conduct of meetings, apply to the Commission as well.

II Documents Incorporated by Reference

In addition to the Bylaws and this Master Plan, several other documents guide the activities of the Galiano Island Parks and Recreation Commission. The relevant documents are summarized here; the full text of the documents is available from the Commission.

Capital Regional District COMMISSION HANDBOOK, updated February, 2019: This handbook provides an orientation and reference to CRD operations and procedures from the perspective of a commissioner. By highlighting such issues as budgeting, running good meetings, and risk management, the handbook shows commissioners their role in providing services within the framework of the CRD.

LOCAL GOVERNMENT ACT, Section 941: The *Act* sets out provisions by which parkland (or cash in lieu) is dedicated to the community during the subdivision process.

PROTOCOL AGREEMENT REGARDING THE PROVISION OF PARKLAND Between the Galiano Island Local Trust Committee and the Galiano Island Parks and Recreation Commission Representing the Capital Regional District, 6 November 1996: This protocol sets out an understanding of the complementary roles of the Local Trust Committee of the Islands Trust in facilitating the dedication of parkland and the Commission in operating, developing, and maintaining community parks.

LAND TITLE ACT, Section 75(1)(c) and (d): The *Act* sets out provisions by which public access to the foreshore is created at time of subdivision. Title to these public lands is held by the Ministry of Transportation and Infrastructure.

PUBLIC ACCESSES TO WATER Agreement between the Ministry of Transportation (MoT) Vancouver Island District (VID) and the Capital Regional District (CRD), 12 October 2006: This agreement establishes the framework for granting tenure to the CRD for the development, management and regulation of shore accesses for public recreational purposes. Under this agreement, the Ministry of Transportation grants the CRD a Licence of Occupation for the shore accesses specified in a separate schedule: "Schedule A" for Galiano lists those public shore accesses that will be developed and managed by the Commission under the Licence of Occupation.

Tomorrow's Trails: A Trail Network Plan for Galiano, October, 2007: Prepared by consultant Judith Cullington, the Trail Network Plan captures a community vision for future trails for the island. The Plan, with maps and map notes, sets out long-range goals to guide the Commission's work in securing legal public rights-of-way on the trails that the community values.

III GIPRC Commissioners 1995 - 2019

1995

Sheila Anderson
John Donaldson
Debbie Holmes
Andrew Loveridge
Linda Millard
Anne Nichols
Matthew Schoenfeld
Loren Wilkinson

1995-1996

Sheila Anderson
Pam Frier
Debbie Holmes
Bill Jones
Andrew Loveridge
Linda Millard
Anne Nichols
Alistair Ross

1996-1997

John Donaldson
Carol Guin
Bill Jones
Andrew Loveridge
Barbara Moore
Anne Nichols
Jillian Ridington
Mary Ruth Wilkinson

1997-1998

John Donaldson
Carol Guin
Carolyn Jerome
Bowie Keefer
Andrew Loveridge
Helen May
Linda Millard
Barbara Moore
Anne Nichols
Jillian Ridington

1998-1999

Larry Cassidy
Kieth Erickson
Nathan Gaylor
Carolyn Jerome
Bowie Keefer
Andrew Loveridge
Linda Millard
Jillian Ridington

1999-2000

Larry Cassidy
Carolyn Jerome
Dora Fitzgerald
Nathan Gayloer
Catherine Holahan
Nicholas Hunt
Carolyn Jerome
Jillian Ridington

2001-2002

Anita Braha
Joy Brown
John Coates
Dora Fitzgerald
Nicholas Hunt
Bob Harmer
Carolyn Jerome
Mario Szijarto

2002-2003

Anita Braha
Joy Brown
John Coates
Dora Fitzgerald
Nicholas Hunt
Andrew Loveridge
Michael Sharp
Mario Szijarto

2003-2004

John Coates
Dora Fitzgerald
Nicholas Hunt
Jennifer Keefer
Andrew Loveridge
Libby McClelland
Craig Mullen
Mario Szijarto

2003-2004

John Coates
Dora Fitzgerald
Nicholas Hunt
Jennifer Keefer
Andrew Loveridge
Libby McClelland
Don McKinnon
Mario Szijarto

2004-2005

John Coates
Dora Fitzgerald
Janet Hahn
Nicholas Hunt
Jennifer Keefer
Libby McClelland
Don McKinnon
Mario Szijarto

2005-2006

Jerry Azevedo
Kara Berriault
Dora Fitzgerald
Paul Leblond
Andrew Loveridge
Libby McClelland
Don McKinnon
Mario Szijarto

2006-2007

Sheila Anderson
Jerry Azevedo
Dora Fitzgerald
Paul Leblond
Libby McClelland
Don McKinnon
Stefani Paine
Mario Szijarto

2007-2008

Sheila Anderson
Jerry Azevedo
Dora Fitzgerald
Paul Leblond
Libby McClelland
Don McKinnon
Stefani Paine
Mario Szijarto

2008-2009

Sheila Anderson
Jerry Azevedo
Travis Beaulieu
Dora Fitzgerald
Paul Leblond
Don McKinnon
Mario Szijarto
Rose Marie Umana

2009-2010

Travis Beaulieu
 Tesa Cournoyer
 Allan Doty
 Keith Hutchinson
 Betty Kennedy
 Don McKinnon
 Mario Szijarto
 Rose Marie Umana

2010-2011

Cheryl Bastedo
 Allan Doty
 Kieth Hutchinson
 Betty Kennedy
 Barry Lovell
 Don McKinnon
 Mario Szijarto
 Rose Marie Umana

2011-2012

Ed Andrusiak
 Cheryl Bastedo
 Allan Doty
 Mike Hoebel
 Betty Kennedy
 Don McKinnon
 Jeffery Patterson
 Mario Szijarto

2012-2013

Ed Andrusiak
 Cheryl Bastedo
 Allan Doty
 Mike Hoebel
 Betty Kennedy
 Don McKinnon
 Jeffery Patterson
 Maro Szijarto

2013-2014

Ed Andrusiak
 Cheryl Bastedo
 Allan Doty
 Mike Hoebel
 Betty Kennedy
 Don McKinnon
 Jeffery Patterson
 Mario Szijarto

2014-2015

Ed Andrusiak
 Allan Doty
 Dora Fitzgerald
 Mike Hobel
 Betty Kennedy
 Don McKinnon
 Gloria Schmidt
 Mario Szijarto

2015-2016

Ed Andrusiak
 Dora Fitzgerald
 Allan Forget
 Mike Hoebel
 Betty Kennedy
 Don McKinnon
 Gloria Schmidt
 Mario Szijarto

2016-2017

Ed Andrusiak
 Allan Forget
 Werner Heinrich
 Mike Hoebel
 Betty Kennedy
 Don McKinnon
 Gloria Schmidt
 Mario Szijarto

2017-2018

Ed Andrusiak
 Allan Forget
 Werner Heinrich
 Mike Hoebel
 Paul Leblond
 Don McKinnon
 Kate Paterson
 Gloria Schmidt

2018-2019

Ed Andrusiak
 Allan Forget
 Werner Heinrich
 Mike Hoebel
 Keith Hutchinson
 Paul Leblond
 Stephen Rybak
 Gloria Schmidt

2018-2019

Ed Andrusiak
 Charlene Dishaw
 Allan Forget
 Mike Hoebel
 Gerry Longson
 Stephen Rybak
 Gloria Schmidt
 Andrew Simon