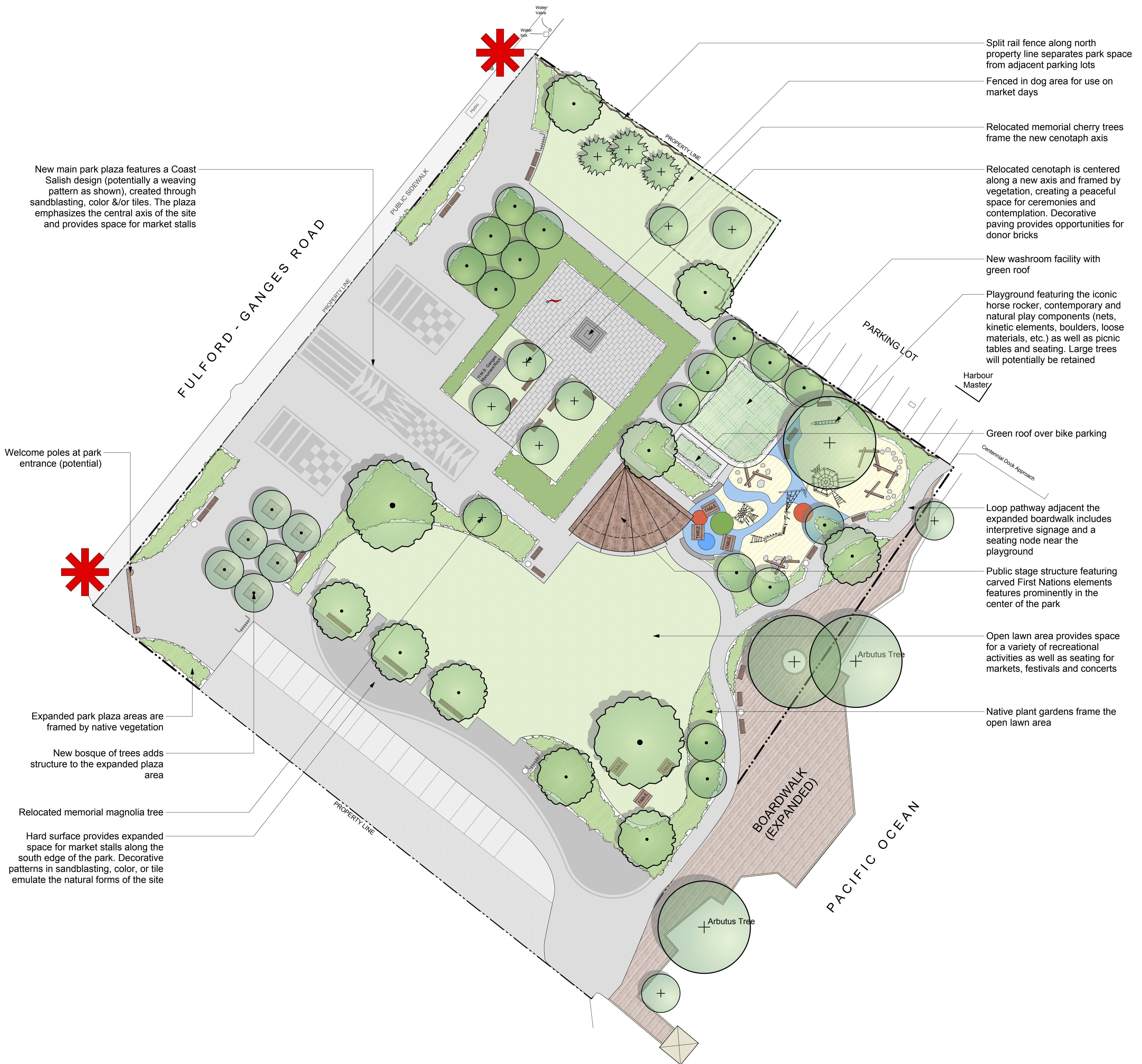


# DRAFT



New main park plaza features a Coast Salish design (potentially a weaving pattern as shown), created through sandblasting, color &/or tiles. The plaza emphasizes the central axis of the site and provides space for market stalls

Welcome poles at park entrance (potential)

Expanded park plaza areas are framed by native vegetation

New bosque of trees adds structure to the expanded plaza area

Relocated memorial magnolia tree

Hard surface provides expanded space for market stalls along the south edge of the park. Decorative patterns in sandblasting, color, or tile emulate the natural forms of the site

Split rail fence along north property line separates park space from adjacent parking lots

Fenced in dog area for use on market days

Relocated memorial cherry trees frame the new cenotaph axis

Relocated cenotaph is centered along a new axis and framed by vegetation, creating a peaceful space for ceremonies and contemplation. Decorative paving provides opportunities for donor bricks

New washroom facility with green roof

Playground featuring the iconic horse rocker, contemporary and natural play components (nets, kinetic elements, boulders, loose materials, etc.) as well as picnic tables and seating. Large trees will potentially be retained

Green roof over bike parking

Loop pathway adjacent the expanded boardwalk includes interpretive signage and a seating node near the playground

Public stage structure featuring carved First Nations elements features prominently in the center of the park

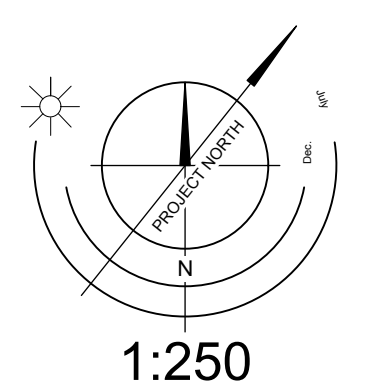
Open lawn area provides space for a variety of recreational activities as well as seating for markets, festivals and concerts

Native plant gardens frame the open lawn area

**LEGEND**

- Primary park entrances. Entrances marked with native plant gardens. Potentially include welcome poles at south entrance.
- New park tree
- Retained deciduous tree
- Retained coniferous tree

# DRAFT



## CENTENNIAL PARK LANDSCAPE MASTERPLAN