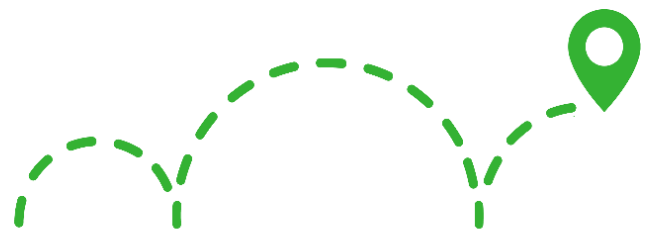




View Royal Elementary

Active School
Travel Report
2019/20



READY STEP ROLL
ACTIVE SCHOOL TRAVEL PLANNING

Facilitated by the CRD and published August 2020. Proudly supported by:



Contents

Active School Travel Planning.....	4
Benefits of Active Travel.....	5
CRD’s Ready Step Roll Program	6
School Profile & Catchment Travel Context	8
6 E’s Approach to Active School Travel Planning	10
Equity	11
Evaluation.....	12
Consultation.....	13
School Travel <i>Snapshot</i>	14
School travel <i>Challenges</i>	17
School Travel <i>Opportunities</i>	18
Action Plan <i>Highlights</i>	19
Engineering.....	20
Enforcement	21
Education.....	22
Encouragement.....	23
Map: Plan Your Route to View Royal Elementary	24
Keep Rolling with Next Steps	26
Partner Key Contacts & Links to Resources.....	26
Appendices.....	27

Appendices

- Appendix A – Plan Your Route Map & Student Activity
- Appendix B – Action Plan
- Appendix C – Consultation Data & Insights Summary
- Appendix D – 6 E’s of Active School Travel - Online Resources for School Communities

ACTIVE SCHOOL TRAVEL PLANNING



View Royal Elementary

Active School Travel Planning is a school catchment/neighbourhood-based planning process aimed at increasing rates of walking and wheeling (bike, scooter, rollerblades, skateboard, wheelchair) or bus -- modes of active travel -- part-way or fully to and from school. Active School Travel Planning programs have already been successfully implemented in many communities across Canada and internationally. The “International Best Practices in Regional Planning for School Travel” (Ryerson University, Toronto, April 2016) <https://ontarioactiveschooltravel.ca/wp-content/uploads/2017/08/Best-Practices-Report-Ryerson.pdf>, looks at a number of case studies and key learnings from around the world.

The [Capital Regional District](#) (CRD) [Board Priorities](#) and [Corporate Plan](#) identifies *transportation* as a key regional priority and *envisions that residents have access to convenient, green and affordable multi-modal transportation systems that enhance community well-being*. Helping to further this priority through behaviour change and infrastructure improvement at a foundational level, the CRD coordinates the active and safe routes to school planning initiative, known as the CRD’s Ready Step Roll – Active School Travel Planning program.



Modes of Active Travel

BENEFITS OF ACTIVE TRAVEL

Active travel describes using any form of transportation that relies on human-power to move. This includes **walking** and **wheeling** (bike, skateboard, rollerblades, scooter, wheelchair).

Students who **walk and wheel** to and from school (fully or part way!) can:



Improve physical and mental health



Arrive alert and ready to learn



Create positive community behavior change



Support and help parents and guardians with household schedules/routines, while becoming more self-reliant and independent



Feel present and connected



Build confidence and capability



Reduce traffic congestion, cleaner air and reduced Green House Gas emissions



Save time and money

CRD'S READY STEP ROLL PROGRAM

What is the Ready Step Roll Program?



Facilitated by the Capital Regional District (CRD), the Ready Step Roll (RSR) - Active School Travel Planning program works annually with five school communities and respective local government agencies to encourage and enable more students to use active transportation to get to/from school. Students who walk and wheel (bike, scooter, skateboard, wheelchair) to/from their school (or bus stop!) arrive alert and ready to learn, while helping to reduce regional GHG emissions and create safe, connected communities.

The Ready Step Roll program is a comprehensive and sustainable approach to making school-neighbourhoods more walk-able and wheel-able, by identifying and addressing safety and social barriers to better support and enable active travel with purpose and confidence. The success of the program relies on participatory partnerships with provincial and local governments, school districts and schools (administration, PACs and students), along with the Insurance Council of British Columbia (ICBC), Island Health Authority, police forces, local businesses, and non-profits. Working together, the partners focus on creating solutions through equity, evaluation, engineering, enforcement, education and encouragement, known as our “6-E’s approach to active school travel planning”.

What is the Active Travel Planning Process?

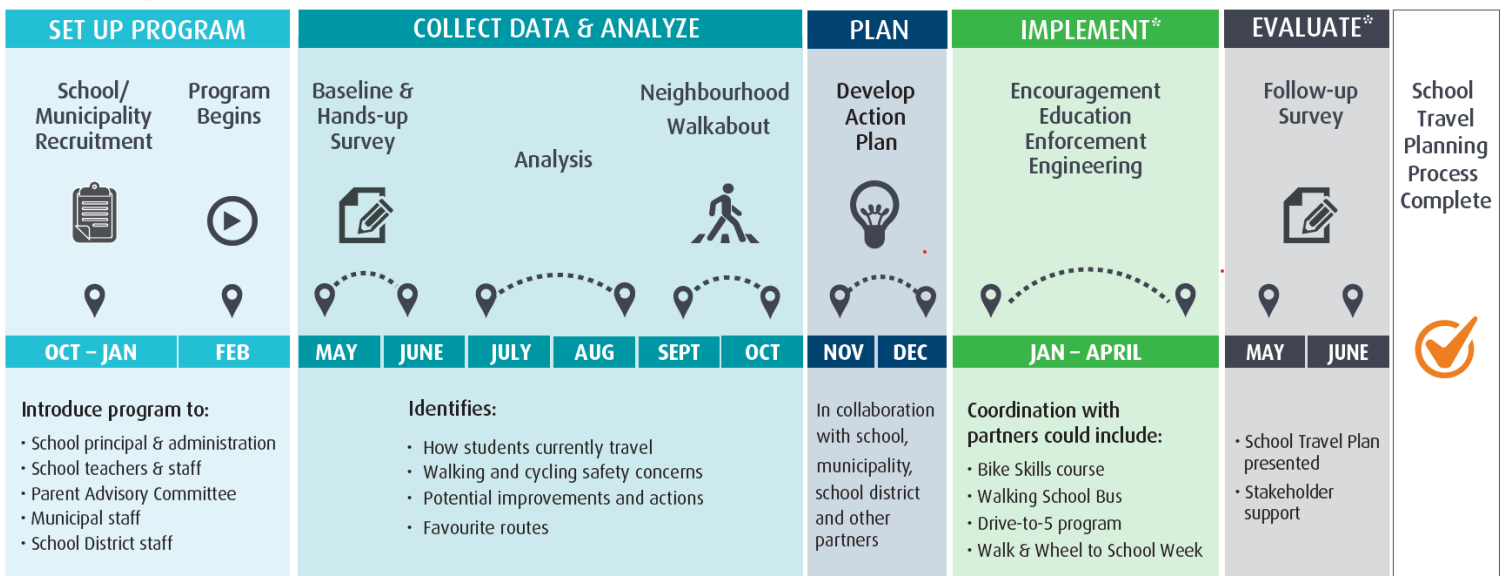
Over the 18-month RSR program (approximately January through to the following June), the CRD works collaboratively with stakeholders to:

1. **Identify** schools and local governments that are **committed to working** together.
2. **Facilitate** the creation and implementation of school-catchment **Active School Travel Report** to further enable and inspire active transportation mode choice. During the program, local active travel safety concerns on common school routes are identified via school travel surveys, a School-Neighbourhood Walkabout, as well as a variety of consultation activities.
3. **Build capacity** of the school for ongoing initiatives that focus on **Equity, Evaluation, Engineering, Enforcement, Education and Encouragement (the 6 E’s)**.

Who are the Key Partners?

- **CRD** – Facilitator and Project Manager of the Ready Step Roll (RSR) program.
- **Town of View Royal**- Provides local knowledge on street level infrastructure, assists in development of Action Plan, evaluates and considers proposed solutions, supports/undertakes implementation and follow-ups with school regarding safety improvements post RSR program.
- **School Administration and School District** – Provides insight into school sites and bussing, evaluates and considers implementation of proposed solutions on school property, and supports implementation of education and engagement initiatives during and post RSR program.
- **School Community (Parents/Guardians, PACs, and Students)** – Provides perspective on the walk-ability and wheel-ability of the school-neighborhood, identifies constraints and opportunities for improved drop-off/pick-up, contributes to action planning, and supports education and engagement initiatives during and post RSR program.

What is the Program’s Timeline?



*implementation and evaluation changed due to impacts of Covid-19

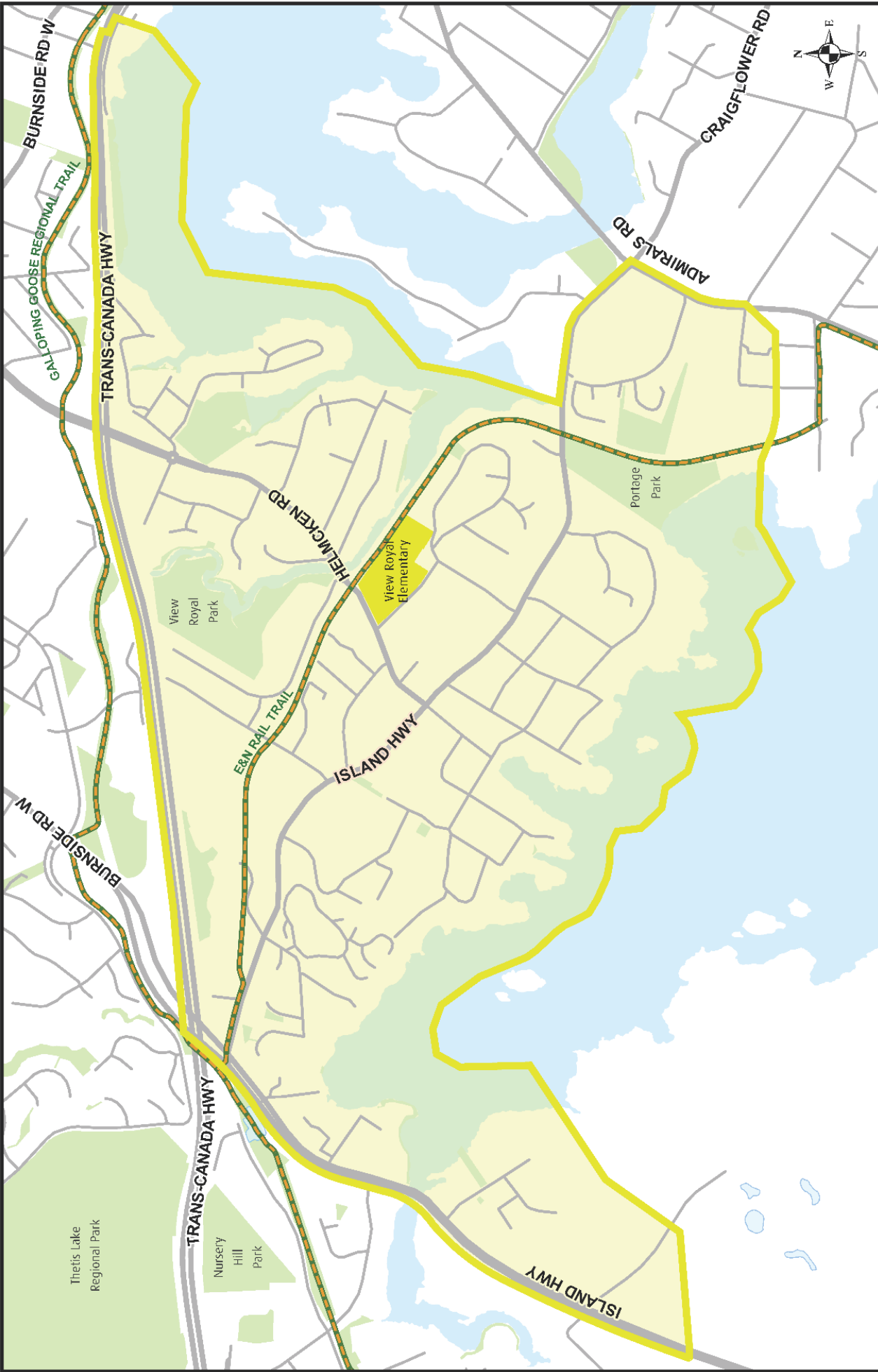
SCHOOL PROFILE & CATCHMENT TRAVEL CONTEXT



View Royal Elementary School Profile

School District	School District 61
Local Government	Town of View Royal
Grades	K-5
2019 Enrollment	310 students
School Programs	<ul style="list-style-type: none"> → StrongStart Early Learning Program → Out of School Care on site
School-Based Active Travel Support	<ul style="list-style-type: none"> → One Crossing Guard → On-site outdoor supervision begins at 8:30am and ends at 3:00pm → Bike Racks → Annual Bike Rodeo organized by PAC and staff? → Active PAC
New! Ready Step Roll Active Travel Initiatives (ongoing)	<ul style="list-style-type: none"> ✓ Drive-to-5 locations at: <ul style="list-style-type: none"> → Burnett Rd → Pheasant Lane <ul style="list-style-type: none"> ○ School supervision from 8:30am to encourage parents to “Kiss & Go” or “Park and Stroll” ✓ New bike & scooter racks (added to existing fleet of bike racks) ✓ 6 E’s of Active Travel Companion Guide for Schools ✓ Town of View Royal completed &/or working on many Action Plan items

View Royal Elementary is one of 27 elementary schools in School District 61, and one of two elementary schools located in the Town of View Royal. The Town of View Royal is located in between the core area of the CRD and the fast-growing Westshore suburbs and consequently experiences high traffic volumes due to commuting and thoroughfare traffic. Moreover, View Royal Elementary is situated on a main connector route to the Trans-Canada Hwy while also being adjacent to the Regional E&N Rail Trail, thus experiencing high vehicle and cyclist volumes during traffic peaks. In the View Royal Baseline School Travel Survey, View Royal families demonstrated an interest in achieving higher active travel participation, but cited family scheduling constraints and traffic safety concerns as common barriers.



CRD
Making a difference...together

Important: This map is for general information purposes only. The Capital Regional District (CRD) makes no warranty, representation, or guarantee of the accuracy, completeness, or reliability of the information on this map. This map is not for navigation. The CRD will not be liable for any damage, loss or injury resulting from the use of the map or information on the map and the map may be changed by the CRD at any time.

View Royal Elementary Catchment

READY STEP ROLL
ACTIVE SCHOOL TRAVEL PLANNING

Scale: 0 100 200 300 400 500 Metres

Projection: UTM ZONE 10N NAD 83

Major Road

Minor Road

School Catchment

Park

6 E'S APPROACH TO ACTIVE SCHOOL TRAVEL PLANNING

The 6 E's approach to Active School Travel Planning aims to be a comprehensive, integrated and sustainable approach to making school-neighbourhoods more walk-able and wheel-able, by identifying and addressing safety and social barriers to better support and enable active travel with purpose and confidence.

	<p>Equity</p> <p>Ensures that the RSR program across the Capital Region is benefiting all demographic groups, with particular attention to ensuring safe, healthy, and fair outcomes for all students of diverse family, cultural, socio-economic backgrounds, abilities and identities.</p>
	<p>Evaluation</p> <p>Collect data and user insights to understand school-neighborhood context, assess which approaches are appropriate, identify opportunities to improve the effectiveness of an approach for a given school community and monitor changes over time.</p>
	<p>Engineering</p> <p>Make physical improvements to the streetscape and built environment to improve the walk-ability and wheel-ability with a focus on the immediate school-neighbourhood, common/high-use routes, and on school property.</p>
	<p>Enforcement</p> <p>Increase awareness and compliance of traffic laws, parking regulations, drop-off/pick-up guidelines and personal safety with a focus on the immediate school-neighbourhood and on school property.</p>
	<p>Education</p> <p>Change perceptions of active travel and support programs to improve safety, reduce conflicts between transportation modes, and build the confidence and skills needed to safely and confidently walk or wheel to and from school.</p>
	<p>Encouragement</p> <p>Promote walking and wheeling as fun, easy, practical, exciting and inclusive ways to get to and from school (fully or part-way).</p>



EQUITY

Ensures that the RSR program across the Capital Region is benefiting all demographic groups, with particular attention to ensuring safe, healthy, and fair outcomes for all students of diverse family, cultural, socio-economic backgrounds, abilities and identities.

How does the Ready Step Roll program integrate 'Equity' at a local government level?

- ✓ Works to consult with all relevant school and community/government stakeholders by offering multiple engagement opportunities on a variety of platforms.
 - **In person:** Walkabout, PAC and Principal Meetings, Mapping, Engagement/Celebration stations, Hands Up Surveying method.
 - **Virtual:** Baseline School Travel Survey, email/phone consultation, access to website resources, material sharing with program partners.

How does the Ready Step Roll program integrate 'Equity' at a school community level?

- ✓ Works with PACs to facilitate equity into all opportunities and ideas
 - **Educational:** Works with PAC representative to facilitate PAC volunteer coordination for active travel events (bike skills etc.).
 - **Financial:** Hosts Equipment Exchange Station (bikes, helmets, rain gear) at PAC and after school events, shares available bursary and grant opportunities, and highlights continuing safety efforts that work to support all students (crossing guard appreciation).
- ✓ Works with School Administration to address gaps in before and after supervision to support family and work schedules.
 - Walking School Bus and Drive to 5 initiatives.
 - Realignment of school ground supervision as needed.
- ✓ Works with School District Facilities and Transportation to address accessibility issues when travelling to/from school.
 - Safe and accessible school sites: Elimination of tripping hazards at school access points, pedestrian visibility issues at school access points, considers safety and accessibility of active travel near school bus stops.



EVALUATION

Collects data and user insights to understand school-neighbourhood context, assess which approaches are appropriate, identify opportunities to improve the effectiveness of an approach for a given school community and monitor changes over time.

To help better understand how students travel to and from school, why families make their travel choices, and what would encourage families to shift towards active travel modes, the program collects data through various means of formal and informal consultation. The CRD evaluates and uses the data and insights of the school community to facilitate development of the Action Plan with the local government, school and other participating community members.

Hands-Up Survey

→ Week-long daily survey taken in-class held at the beginning, middle and end of the program, to understand how students typically travel to and from school. This survey may be used as a school baseline throughout the program and in future years to gauge change over time.

Baseline School Travel Survey

→ Online questionnaire answered by parents and guardians is a deeper dive into identifying current and preferred travel modes, specific barriers, safety concerns and suggestions to encourage families to shift towards using more active travel.

School-Neighbourhood Walkabout

→ Build on the school survey data to get a better understanding of the challenges families have walking and wheeling to school. In the second hour, participants work together to brainstorm engineering, education and encouragement solutions. This information is used to create the Action Plan to guide improvements.

Personal Communications

→ Meetings, email, phone conversations throughout the program with Principal, Parent Advisory Committee (PAC) and local government confirm collected data and facilitate the development of the Action Plan.

CONSULTATION

View Royal Elementary - School Consultation Summary



167 Baseline School Travel Surveys, representing 54% of students (May/June 2019)



1969 Student Trips Recorded on Hands Up Surveys (May 2019)*



4 In School Encouragement & Engagement Activities**

→ Walk and Wheel Celebration Station (October 2019)

→ Plan Your Route Mapping Engagement (February 2020)

→ Bike Skills**

→ Road Safety**



1 School Neighbourhood Walkabout (October 2019)



6 Principal &/or PAC meetings (2019-20)



2 Local Government Meetings, with numerous phone & email communications focused on drafting the Action Plan (2019-20)

* Recorded over 4 days due to Pro-D day.

** Due to the school COVID-19 impacts, a number of encouragement and engagement activities were cancelled or postponed. The follow-up survey component was also cancelled. Program evaluation with school and local government occurred after the program ended and is not reported in this document.

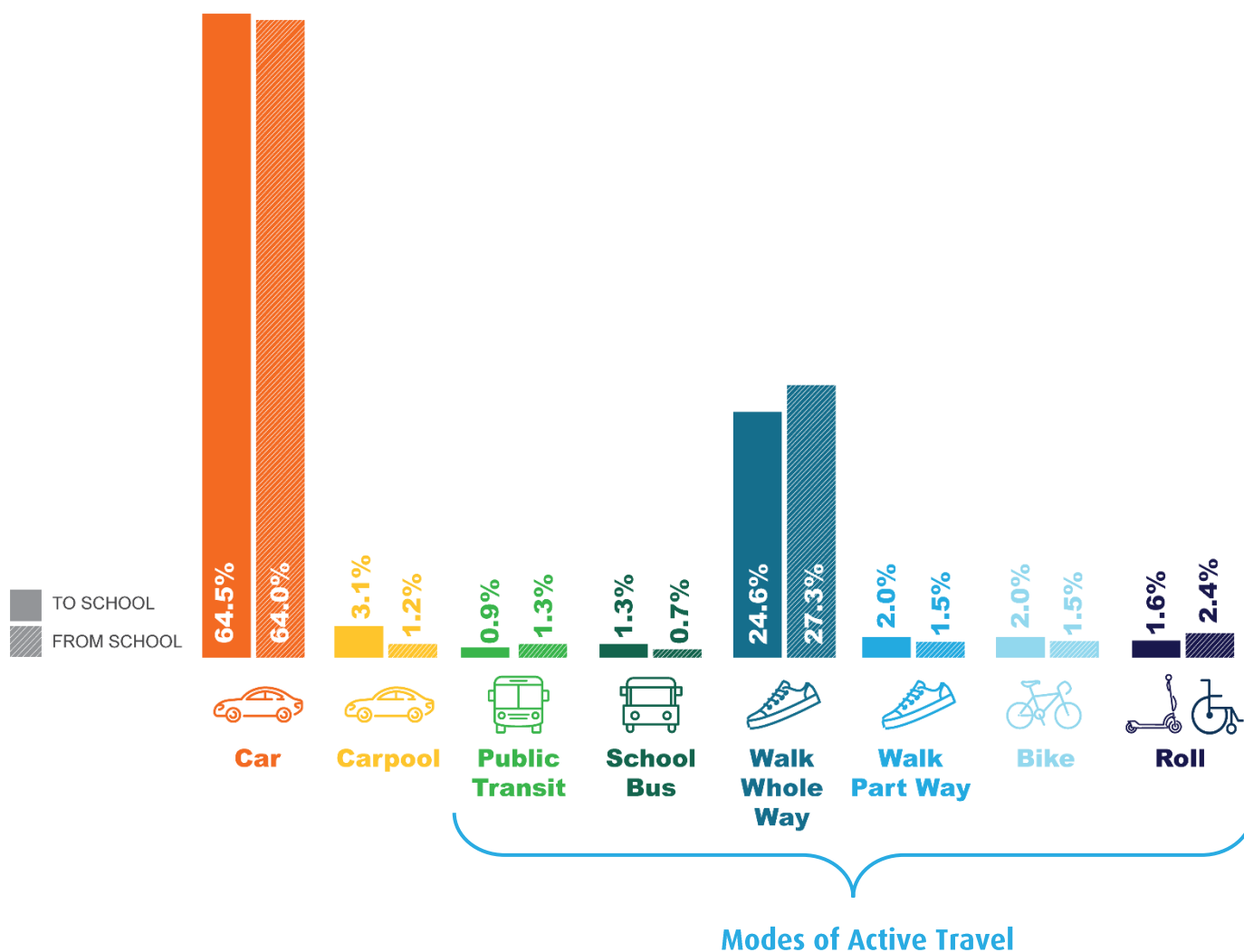
SCHOOL TRAVEL SNAPSHOT

Data was obtained from the on the 2019 View Royal Baseline School Travel Survey & Hands-Up Survey

How do students typically get to & from View Royal Elementary?

→ Typically, about **35%** of students use some form of active travel to and from View Royal.

Driving (alone or carpool) accounts for about **65%** of the travel to and from school.



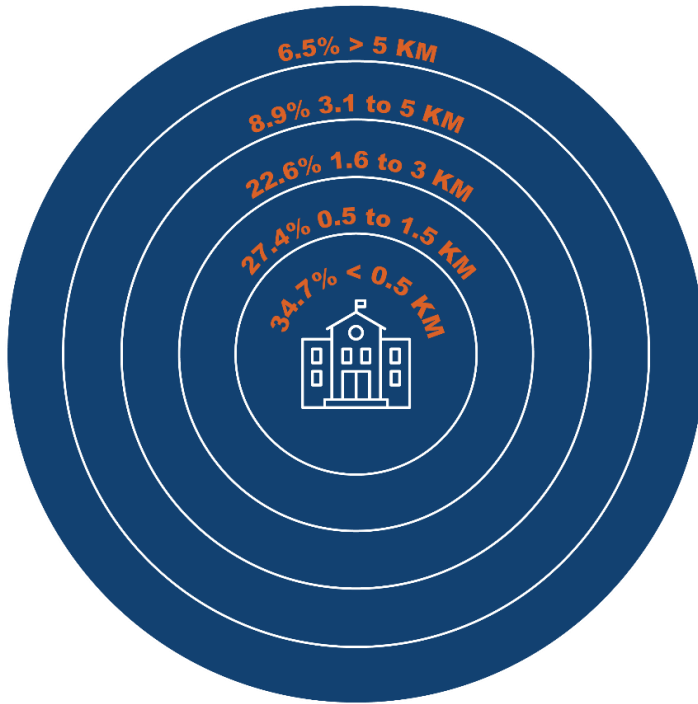
TAG ALONG!

Over **50%** of students using active travel to and from View Royal Elementary are accompanied by an adult. Talk to other families and see if your street can start a Walking School Bus!

How far do students live from View Royal Elementary?

→ Over **60%** of all families attending View Royal live within 1.6 km of the school.

Due to a relatively small catchment, about **6.5%** of students live over 5 km from the school.

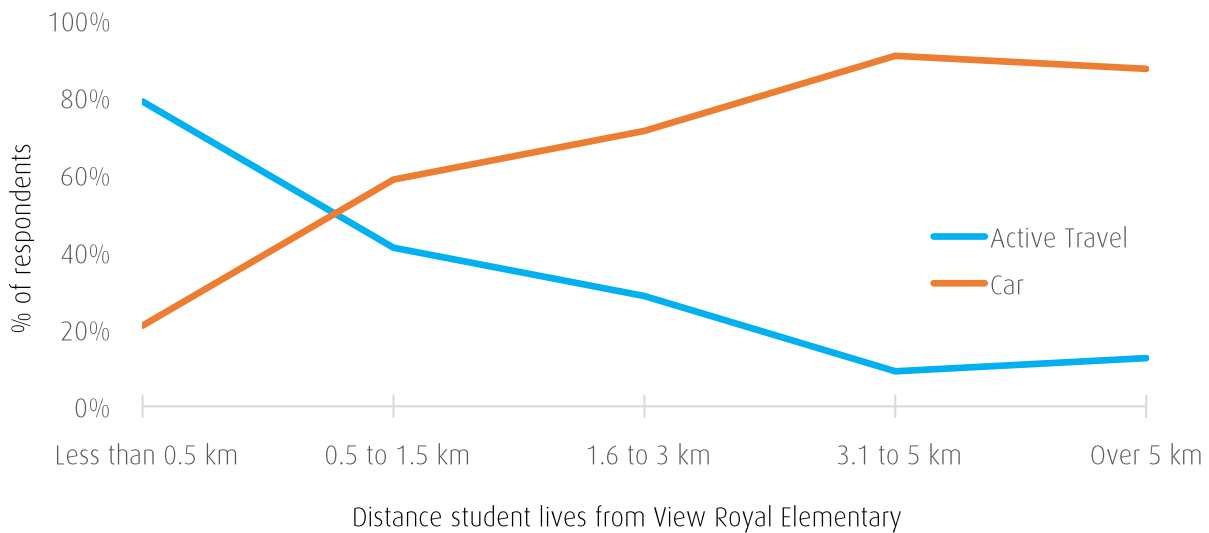


CURB OUT CONGESTION!

A **0.5KM** walk only takes **5 minutes!**

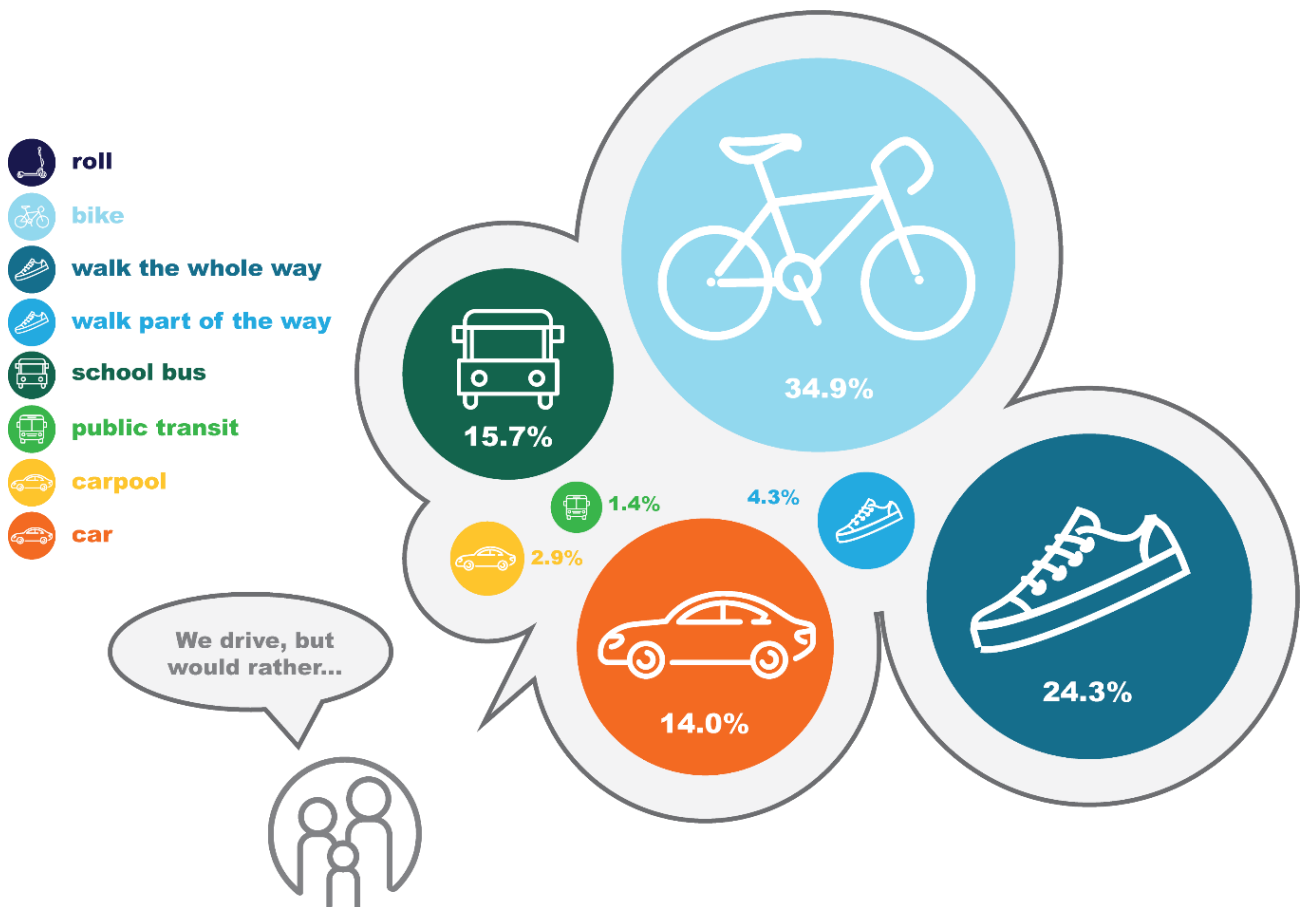
How does distance impact travel choices at View Royal Elementary?

→ Typically, **50%** of students that are **driven** to/from school live less than 1.6 km from school.



How would you prefer your student to get to/from View Royal Elementary?

→ Of all families, **74%** of parents would prefer their child uses active transportation to travel to and from school.



LET'S GET MOVING!

Out of all View Royal Elementary families who usually drive, **83%** of families would prefer their child use active travel to get to and from school.

SCHOOL TRAVEL CHALLENGES

As identified through formal and informal consultation - listed in order of priority.

Helmcken Road

- High vehicle volumes & speeds
- Poor vehicle yield/stop compliance at roundabouts
- Narrow bike lanes
- Building confidence to use bike lane independently

Island Highway

- High vehicle volumes & speeds
- Lack of sidewalks
- Not enough time to cross intersection/feel unsafe
- Poor traffic law compliance from drivers during rush hour

Rudyard Road

- High vehicle speeds & volumes on narrow road
- Parked vehicles limit pedestrian visibility, removes space for pedestrians to walk
- Lack of sidewalks
- Not enough time to cross intersection/feels unsafe

Glenairlie Drive

- Vehicle speeds
- Lack of sidewalks
- Visibility of pedestrians

E & N Rail Trail

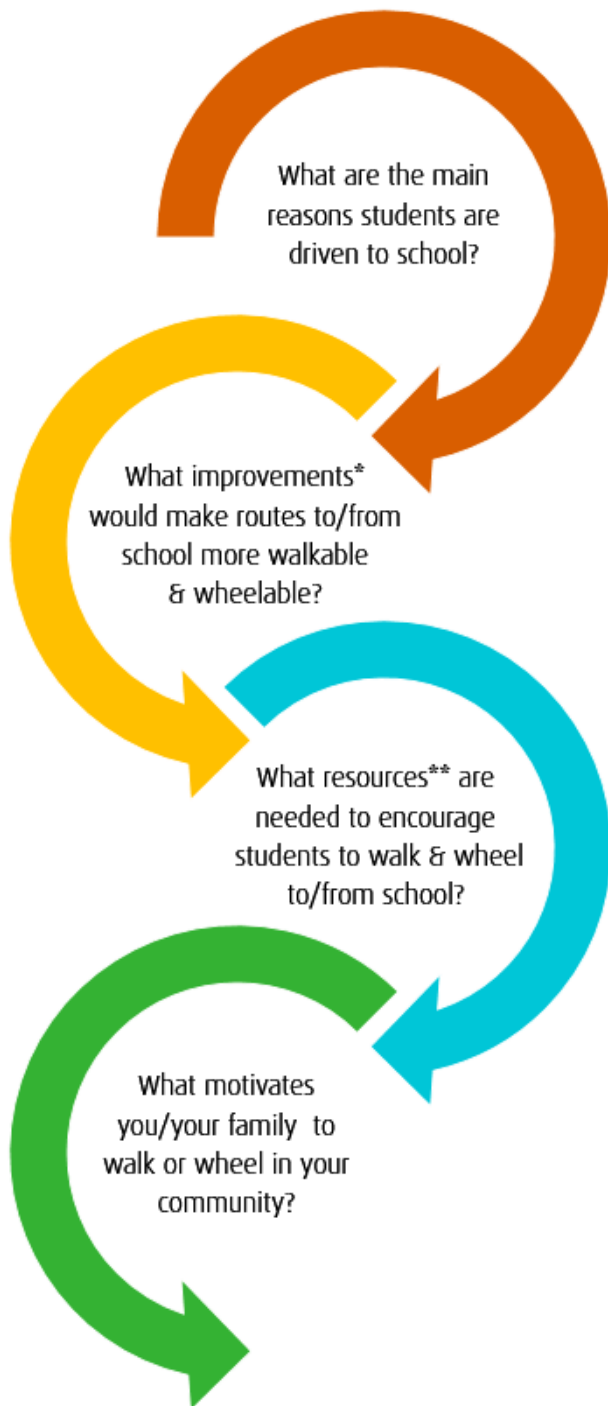
- Personal safety
- Concerns about bullying
- Poor public trail etiquette
- Commuter Bike Speeds

Other roads with similar concerns:

- Admirals Rd, Craigflower Rd, Stormont Rd, Gorge Rd, Watkiss Way

SCHOOL TRAVEL OPPORTUNITIES

As identified through formal and informal consultation.



- Convenience/time pressures
- Too far to walk/bike/wheel
- Student too young to walk/bike/wheel
- Traffic dangers/concerns

- Continuous sidewalks/trails
- Connected bike infrastructure
- Efforts to lower vehicle speeds & volumes
- Better cycling skills/capability of my child
- Secure/covered bike parking

- Identifying appropriate routes to school
- Practicing walking and wheeling as a family on weekends
- Making sure my child has clothing to walk or ride in the rain
- Ensuring my child's equipment is in good working order

- Getting physical activity/exercise
- Spending time outside
- Setting a good example
- Environmental benefits

*For more details, see the View Royal Action Plan (Appendix B)

**For more resources, see Plan Your Route Map & Student Activity (Appendix A), Action Plan (Appendix B), Appendix D – 6 E's of Active School Travel - Online Resources for School Communities (Appendix D)

ACTION PLAN HIGHLIGHTS

One of the main deliverables of the Ready Step Roll Program is the **Action Plan** (see Appendix A). The Action Plan outlines possible solutions to higher priority active travel challenges and opportunities commonly raised during the consultation process. The suggested actions are subject to the respected jurisdictions for consideration, approval and required budgetary process.

The following sections key highlight active travel challenges raised and possible solutions presented in the Action Plan through the lens of the 6 E's principles.

In the following 'Action Plan -Highlights', actions marked with:

- Completed at the time of this final report.
- May not have been committed OR are not yet completed
- Committed ongoing actions

ENGINEERING



Engineering infrastructural improvements help improve the walk-ability and wheel-ability of streetscapes and built environments within immediate school-neighbourhoods, common/high-use routes, and on school property.

Active Travel Challenges Raised

Driver awareness of school zone area

“The biggest concern is cars/trucks/busses using Helmcken to avoid highway traffic and speeding and not paying attention”

“People often go too fast and do not yield to pedestrians/use the roundabout properly”

Crosswalks & Intersections

“Island Hwy has become clogged as a main commute to and from the Westshore. It is a small walk or bike to get to the Goose, but I rarely risk taking my kids there”

“Traffic light to cross old island highway from six mile road is too short to safely cross the street”

Limited pedestrian/cyclist visibility

“Bushes need to be well trimmed back [at Galloping Goose/E&N crossing]. More clear signage and markings. It’s hidden.”

“Road is narrower and {I’m worried about the} speed of vehicles in proximity to bike lane.”

Possible Solutions

Town of View Royal

- ☑ Install digital speed reader on Helmcken Rd
- ☑ Paint “School Zone” on pavement at both ends of Helmcken Rd School Zone
- ☑ Install signage to prohibit left hand turns onto Rudyard during peak hours to reduce back ups

Town of View Royal

- ☑ Modify “countdown” time display at Helmcken/Island Hwy to better inform pedestrians of upcoming light changes
- ☑ Review other intersections to improve pedestrian safety by adjusting the amount of time given to cross safely where possible
- Perform vegetation maintenance as needed to maintain improve sight lines at Helmcken Roundabouts and on school area roads

Town of View Royal

- ☐ Install bollards at Helmcken bike lane entrances to que drivers to give cyclists space
- Perform vegetation maintenance as needed to maintain improve sight lines at Helmcken Roundabouts and on school area roads

CRD Parks

- Perform vegetation maintenance as needed to maintain improve sight lines

ENFORCEMENT



Enforcement increases awareness and compliance of parking regulations, traffic laws, drop-off/pick-up guidelines and personal safety with a focus on the immediate school-neighbourhood and on school property.

Active Travel Challenges Raised

Possible Solutions

Rudyard Road - Parked cars limit visibility of student using active transportation

“No sidewalk/bike lane on a narrow road with residential street parking and high traffic volume at start/end of school day”

View Royal Municipality

- Continue to work with residents and local law enforcement to find the best solutions for this stretch of road

CRD/School Administration

- Encourage students to access school grounds from Glenairlie Rd gate (to avoid use of Rudyard Rd)
- Encourage parents to use alternative parking locations via Drive to 5 programming

E&N Rail Trail – Student Safety

“There are so many times when [we] are passed by other cyclists with no warning at all. I think a general cyclist courtesy program [on trail etiquette for passing children and pets] would be great.”

“[My child] would have to take the bike trail and the bikes travel at dangerously high speeds”

“E & N trail is great, goes right to the school, no need to set foot on a road”

CRD’s RSR program with CRD Parks

- Post “Slow --School Zone” signage to the E&N Rail Trail at View Royal Elementary

CRD Parks/View Royal Municipality

- Review E&N Trail/Road intersection right-of-ways and where possible and safe to do so, give priority to trail users

CRD’s RSR program

- Develop additional active travel resources for trail etiquette near schools.

EDUCATION



Change perceptions of active travel and support programs to improve safety, reduce conflicts between transportation modes, and build the confidence and skills needed to safely and confidently walk or wheel to and from school.

Active Travel Challenges Raised

Possible Solutions

Need for Road Safety & Bike Skills Classes

“Road is narrower and [I worry about the] speed of vehicles in proximity to bike lane.”

“Would like the children to participate in a street smart program for cycling or walking on their own. Topics covered should include road safety and stranger danger.”

School Administration/RSR program (CRD)

- ☑ *Partner with Greater Victoria Bike Society to deliver bike skills to Grade 4 and 5 students
- ☑ *Partner with ICBC & Police to deliver “Think of Me” Road Safety education campaign for students K-3.

* Rescheduled to fall'20 due to impact of Covid19

School Parking Lot

“Parents aren't paying attention at times turning in to school and intersection to parking lot is chaotic and unsafe pedestrians”

Drivers sometimes leave vehicles unattended in no-stopping areas, causing traffic congestion and reducing pedestrian visibility.

RSR program (CRD)

- ☑ Develop:
 - Drive-to-5 sites at: Burnett Rd and Pheasant Ln
 - “Plan Your Route Map” (identifies active travel infrastructure along school routes)
 - Educational resources to support student physical literacy

School Administration & PAC

- ☑ Created a parking lot map for motorists to show the flow of traffic and no stopping areas in drop off area
- Promote use of Drive-to-5 sites and RSR resources
- Encourage families to use the signalized crosswalk with crossing guard instead of roundabout crossings

Need for Educational Resources for School Communities Post-Program

Previous RSR schools have indicated their need for resources after the conclusion of the RSR program in order to build their capacity.

CRD

- ☑ Create the Ready Step Roll “6 E’s of Active School Travel - Online Resources for School Communities”, which includes the Drive to 5 Guide, Walking School Bus Guide, School Streets Guide, and Road Safety Tips for Principal Newsletters. (see Appendix D)



ENCOURAGEMENT

Promote walking and wheeling to kids as easy, exciting, practical, fun and inclusive ways to travel to and from school alone or with friends.

Active Travel Challenges Raised

Need for ongoing school community support of Active Transportation

"I would love my children to bike or scooter to school but I am unable to go with them and I'm not entirely comfortable with them being on their own. If there was something like a walking train or bike train with a number of students and an adult I would be very keen"

Action Plan Key Messages and Solutions

SD61/School Admin/PAC

- ☑ Drive-to-5 locations at: Burnett Rd & Pheasant Lane with school-site supervision from 8:30am to encourage parents to "Kiss & Go" or "Park and Stroll"
- ☑ Take part in community celebrations and campaigns that promote active transportation
- ☑ Look into starting a Walking School Bus
- ☑ Continue to host school events that encourage healthy and active lifestyles
- ☑ Promote the Ready Step Roll "6 E's Active School Travel - Online Resources for School Communities", which includes the Drive to 5 Guide, Walking School Bus Guide, School Streets Guide, and Road Safety Tips for Principal Newsletters. (See Appendix D)

Need for Secure Bike Parking

"Would love to see more kids biking - and bike racks to support that growth"

"Bike parking at the school doesn't look secure. Putting proper bike locks near the out of school care facility would be helpful for those of us who use the facility. In the winter months, it is too dark/cold/wet in the morning."

RSR program (CRD)

- ☑ Purchase a new bicycle rack to be installed at View Royal Elementary in 2020
- ☑ Purchase a new scooter rack to be installed at View Royal Elementary in 2020

SD61/School Admin/PAC

- SD61 is reviewing blueprints to have SD61 High School Trades Classes construct covered bike rack structures. SD61 facilities will work with the View Royal School Administration and PAC to determine next steps for construction and installation.

PLAN YOUR ROUTE TO VIEW ROYAL ELEMENTARY

Plan Your Route to View Royal Elementary: This map was created to show the pedestrian and cyclist infrastructure in the View Royal Lake Hill Elementary School neighbourhood. This map also shows the View Royal Elementary Drive-to-5 sites at Burnett St and Pheasant Lane where families are encouraged to 'Kiss and Go' or 'Park and Stroll' approximately 5 minutes to school.

TRY PLANNING YOUR FAMILY'S ROUTE TO SCHOOL!

Find the map and activity in Appendix A.

Families who **plan**, **prepare**, and **practice** walking and wheeling to school help support children of all ages and abilities to learn safe and smart street-skills while gaining confidence, independence, and daily physical activity. Children will discover how easy, fun and sustainable any trip can be when you plan, prepare and practice using active travel.

Plan

- ✓ Plan the route to school with your child
- ✓ Identify landmarks, road names, and potential hazards
- ✓ Help your child dress for the weather
- ✓ Ensure all equipment is safe and suitable for your child

Prepare

- ✓ Set a good example when walking and wheeling
- ✓ Practice walking and wheeling with your child on weekends
- ✓ Teach road rules using the "CRD Handbook for Cyclists"
- ✓ Encourage independence – allow your child to help make decisions along the way

Practice

- ✓ Quiz your child on road rules and street signs
- ✓ Keep things fun with games like "Red light, Green light" and "I Spy"
- ✓ Invite friends to join you in walking and wheeling
- ✓ Explore new trails, parks, and activities that encourage active travel

Plan your Route to View Royal Elementary

40 Speed Limit (no number = 50 km/h)

Bus Stop

Drive To 5 Parking Location

All Way Stop

Traffic Signal

Crosswalk

Pedestrian Signalized Crosswalk

Pedestrian Overpass

Crossing Guard

School Zone (30 km/h; 8AM-5PM School Days)

Trail

Sidewalk

Bike Route/Lane

Truck Route (busy)

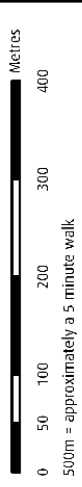
Major Road (busy)

Minor Road (less busy)

Lane (less busy)

School Catchment

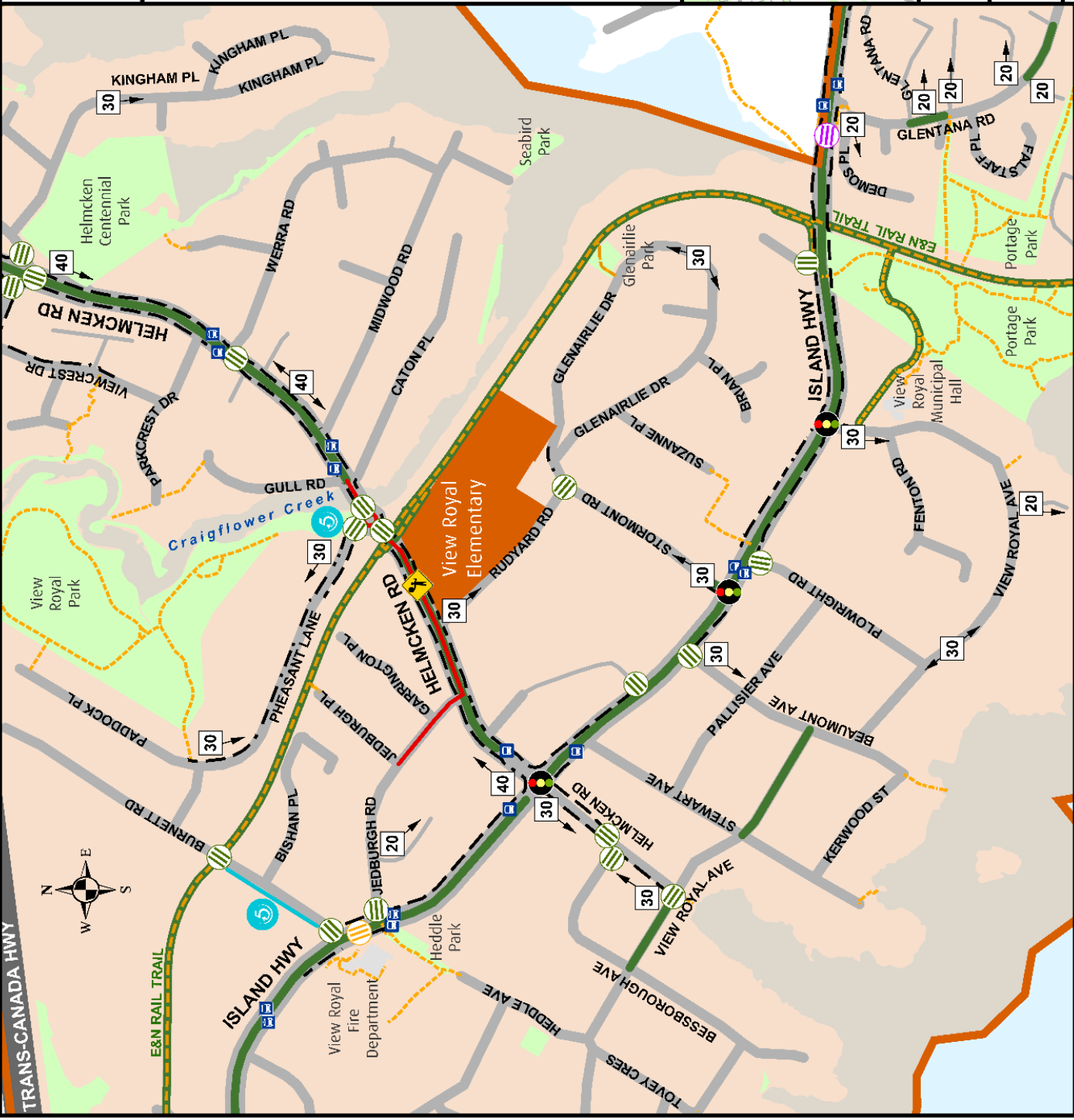
Park



CRPD
Making a difference...together

READY STEP ROLL
SCHOOL DISTRICT LOCAL PLANNING

Important: The Capital Regional District (CRD) does not warrant or represent that the information which is the information or documents, materials, or services are suitable for any particular use. The information is provided on the condition that the user will not be liable for any loss, damage, cost or expense whatsoever incurred by any person or entity using or otherwise relying upon it. The use of this document by any person or entity is entirely at their sole risk.



Plan Your Route: This map was created to show the pedestrian and cyclist infrastructure in the View Royal Elementary school neighbourhood. Use this map to help identify the safest route for your child by selecting routes that use less busy roads and allow for safe street crossings. This map also shows Drive to 5 locations where parents are encouraged to park and walk approximately 5 minutes to school with their child.

KEEP ROLLING WITH NEXT STEPS

By design, the RSR program's focus on the 6 E approach aims to build capacity within stakeholders to fulfill the action plan items and further enable and inspire active travel mode choice. Recognizing that many of the school stakeholders (administration, teachers, PAC, parents and students) move on to new schools, the below 'Next Steps' aim to facilitate the hand off to the new school community over time, so they can continue to foster View Royal Elementary's active travel culture.

Keep Rolling with Next Steps:

Shifting Gears...

Disseminate paper and [digital](#) copies of all resources to the school and local government. CRD to deliver paper copies of Active School Travel Report, Ready Step Roll: 6-E's of Active Transportation Companion Resource for Schools, and a copy of a large printed "Plan your Route to View Royal" map to be placed in the school for future use.

Keeping in Step...

Continue implementation of Action Plan (Appendix B) – suggested actions to be completed or considered by the various partners identified.

Gaining Momentum...

How to keep the momentum going – Learn about the [6 E's of Active School Travel - Online Resources for School Communities](#) – lists ideas, resources and key messages to foster an active travel culture that will continue after the program concludes. Every fall and spring promote the **Plan Your Route Map & Activity** (identifies active travel infrastructure along school routes) to teachers and parents.

PARTNER KEY CONTACTS & LINKS TO RESOURCES

- Town of View Royal Engineering engineering@viewroyal.ca
- CRD Ready Step Roll regionalplanning@crd.bc.ca 250.360.3195
- [View Royal Transportation Plan](#)
- [CRD Pedestrian and Cyclist Master Plan](#)
- [CRD Bike Map](#)

APPENDICES

Appendix A – Plan Your Route Map & Student Mapping Activity

Appendix B – Action Plan

Appendix C – Consultation Data & Insights Summary

Appendix D – 6 E's of Active School Travel - Online Resources for School Communities



READY STEP ROLL

ACTIVE SCHOOL TRAVEL PLANNING

PLAN YOUR ROUTE TO SCHOOL

Appendix A: Map & Activity – View Royal Elementary



APPENDIX A – PLAN YOUR ROUTE TO SCHOOL

Families who plan, prepare, **and** practice walking and wheeling to school help support children of all ages and abilities to learn safe and smart street-skills while gaining confidence, independence, and daily physical activity. Children will discover how easy, fun and sustainable any trip can be when you plan, prepare and practice using active travel.

Plan

- ✓ Plan the route to school with your child
- ✓ Identify landmarks, road names, and potential hazards
- ✓ Help your child dress for the weather
- ✓ Ensure all equipment is safe and suitable for your child

Prepare

- ✓ Set a good example when walking and wheeling
- ✓ Practice walking and wheeling with your child on weekends
- ✓ Teach road rules using the “CRD Handbook for Cyclists”
- ✓ Encourage independence – allow your child to help make decisions along the way

Practice

- ✓ Quiz your child on road rules and street signs
- ✓ Keep things fun with games like “Red light, Green light” and “I Spy”
- ✓ Invite friends to join you in walking and wheeling
- ✓ Explore new trails, parks, and activities that encourage active travel

This appendix includes:

1. A map (last page) of the pedestrian and cyclist infrastructure in the View Royal Elementary School neighbourhood
2. Ideas and tips to help your family plan, prepare, and practice safe active travel
3. A guided activity template to help your family plan your child’s safest active travel route to school
4. A blank activity template for your family to complete.

PLAN YOUR ROUTE TO SCHOOL – ACTIVITY SAMPLE

To get the most out of active travel it is important to plan your route, prepare yourself, and practice good etiquette on the streets and trails.

Learn how to plan the safest route to school for your family with this sample activity, which includes a blank activity along with a completed sample for your reference.

1. Write down each family member's morning & afternoon commute. Be sure to consider any additional stops along the way to their final destination.

Most mornings, Mom travels alone to work by bike
(family member name) (alone/with others to destination) (mode of transportation)

Most afternoons, Mom travels alone from work by bike

Most days, Mom would prefer to travel with Sam to school and work by bike

2. Set family goals! Be sure to consider the age, ability, and independence of each child.

1. "Our child will be dropped off 5 minutes away from school so they can walk part way"
2. "We will practice biking as a family to school on weekends, so our child can bike alone"
3. "I will start a walking school bus so other kids don't have to walk alone"

I would like to accomplish:

_____ by _____
(write your personal goal here) (date)

TRAVEL TIP: SKIP THE LINE!

'Kiss and Go' or 'Park and Stroll' at any of the Drive to 5 locations available at your school to avoid long lines and idling in the drop off loop line up.

3. Consider and make note of potential barriers in each family member's goal.

Examples: balancing other family member's schedules, childcare/supervision, traffic, distance

Barriers	Strategies for success
<p>Timing – we can't bike to school together in the morning, because I will arrive late.</p> <p>Weather – dark outside during the morning</p>	<ol style="list-style-type: none"> 1. Use school's early supervision to allow our family to drop Sam off early, and then bike to work. 2. Purchase bike lights, reflective accessories and clothing 3. Adjust my route to include lighted streets as needed.

4. Use Google Maps to determine the most direct route to school for your family. Explore different routes and travel time estimates for your preferred travel mode.

Route option 1: Use regional trail network. My trip will be 8km and take approximately 30 minutes by bike (including drop off time)

Route option 2: Use neighbourhood cut-through and travel on road bike lanes. My trip will be 10km and take approximately 40 minute by bike (including drop off time)

5. Plan your family's route! Use the attached map to compare suggested Google routes to your school's local infrastructure. With your child, identify safe crossings, caution points, and landmarks to help prepare them to walk and wheel to school.

What walk and wheel infrastructure can you use on the way? (check all that apply)

- | | | |
|--|--|--|
| <input checked="" type="checkbox"/> Sidewalk | <input type="checkbox"/> Pedestrian Overpass | <input type="checkbox"/> Walking School Bus |
| <input checked="" type="checkbox"/> Marked Crosswalk | <input checked="" type="checkbox"/> Crossing Guard | <input checked="" type="checkbox"/> Drive to 5 Parking Area |
| <input type="checkbox"/> Signalized Crosswalk | <input type="checkbox"/> Bike Lane | <input checked="" type="checkbox"/> Pedestrian/Cyclist Trail |

To travel my route, I will use:



It will take about _____ minutes to travel _____.

(time in minutes) (distance; m or km)

PLAN YOUR ROUTE TO SCHOOL - ACTIVITY

1. On a separate sheet of paper, write down each family member's morning & afternoon commute using the same format as below.

Be sure to consider any additional stops along the way to their final destination.

Most mornings, _____ travels _____ by _____
(family member name) (alone/with others to destination) (mode of transportation)

Most afternoons, _____ travels _____ by _____
(family member name) (alone/with others to destination) (mode of transportation)

Most days, _____ would prefer to travel _____ by _____
(family member name) (alone/with others to destination) (mode of transportation)

2. Set family goals! Be sure to consider the age, ability, and independence of each child. If you're stuck on ideas, see the attached example.

I would like to accomplish:

_____ by _____
(write your personal goal here) (date)

3. Consider and make note of potential barriers in each family member's goal.

Examples: balancing other family member's schedules, childcare/supervision, traffic, distance

Barriers	Strategies for success

4. Use Google Maps to determine the most direct route to school for your family. Explore different routes and travel time estimates for your preferred travel mode.

Route option 1:

Route option 2:

TRAVEL TIP: SKIP THE LINE UP!

‘Kiss and Go’ or ‘Park and Stroll’ at any of the Drive to 5 locations available at your school to avoid long lines and idling in the drop off loop line up.

5. Plan your family’s route! Use the attached map to compare suggested Google routes to your school’s local infrastructure. With your child, identify safe crossings, caution points, and landmarks to help prepare them to walk and wheel to school.

What walk and wheel infrastructure can you use on the way? (check all that apply)

- | | | |
|---|--|---|
| <input type="checkbox"/> Sidewalk | <input type="checkbox"/> Pedestrian Overpass | <input type="checkbox"/> Walking School Bus |
| <input type="checkbox"/> Marked Crosswalk | <input type="checkbox"/> Crossing Guard | <input type="checkbox"/> Drive to 5 Parking Area |
| <input type="checkbox"/> Signalized Crosswalk | <input type="checkbox"/> Bike Lane | <input type="checkbox"/> Pedestrian/Cyclist Trail |

To travel my route, I will use:



It will take about _____ minutes to travel _____.

(time in minutes) (distance; m or km)

Plan, Prepare, Practice!

Plan your Route to View Royal Elementary

Speed Limit (no number = 50 km/h)

Bus Stop

Drive To 5 Parking Location

All Way Stop

Traffic Signal

Crosswalk

Pedestrian Signalized Crosswalk

Pedestrian Overpass

Crossing Guard

School Zone (30 km/h; 8AM-5PM School Days)

Trail

Sidewalk

Bike Route/Lane

Truck Route (busy)

Major Road (busy)

Minor Road (less busy)

Lane (less busy)

School Catchment

Park

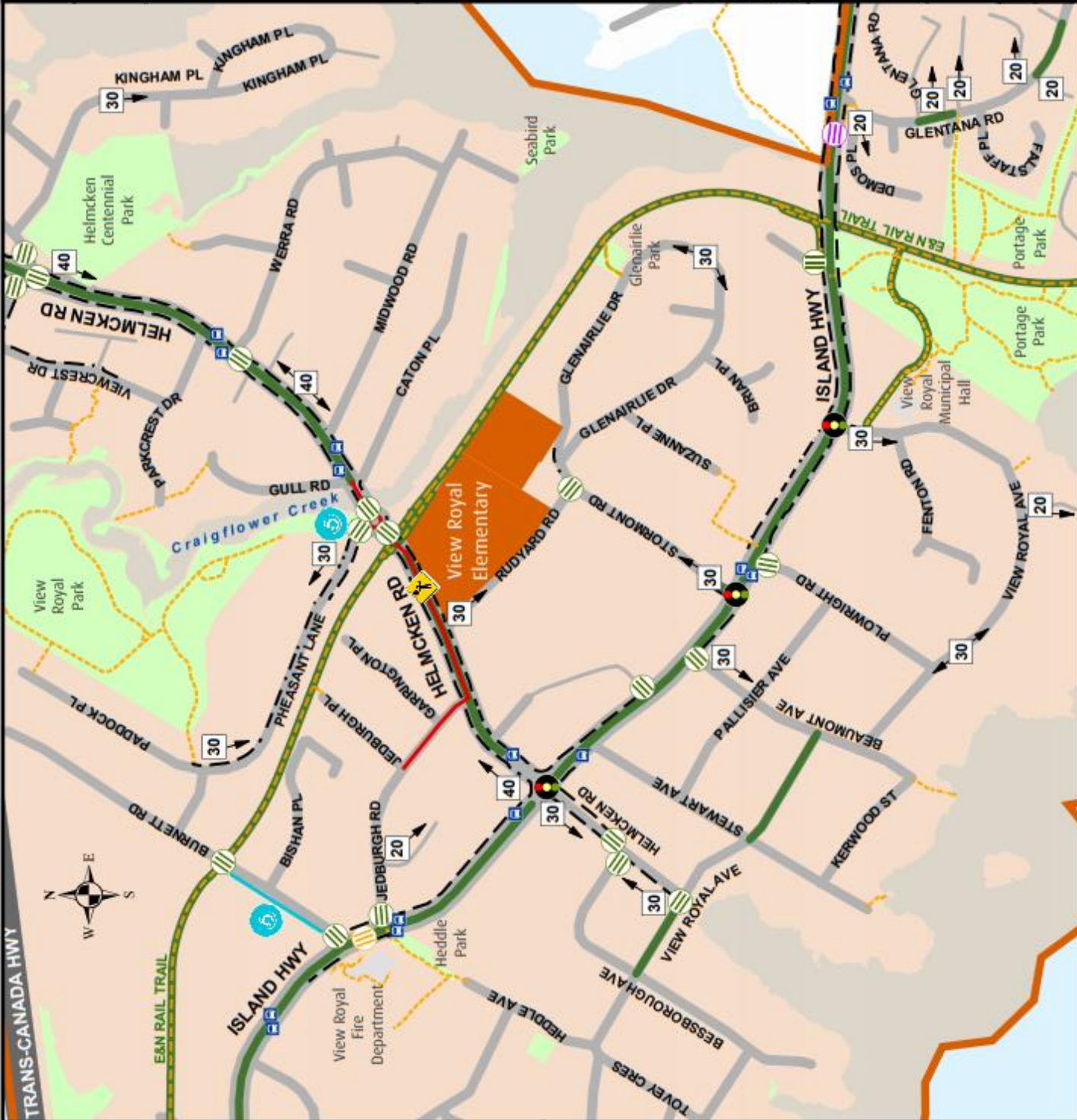


CRPD

Making a difference...together

READY STEP ROLL
ACTIVE SCHOOL TRAVEL PLANNERS

Important: The Capital Regional District (CRD) does not warrant or represent that the information herein is free from errors or omissions, nor does it warrant the safety or suitability of any route, trail, road, or pathway depicted or addressed herein. While every effort is made to ensure the accuracy of the information provided, CRD is not liable for any errors, omissions, or damages whatsoever incurred by any person or entity using or otherwise relying upon it. The use of this document by any person or entity is strictly at their sole risk.



Plan Your Route: This map was created to show the pedestrian and cyclist infrastructure in the View Royal Elementary school neighbourhood. Use this map to help identify the safest route for your child by selecting routes that use less busy roads and allow for safe street crossings. This map also shows Drive to 5 locations where parents are encouraged to park and walk approximately 5 minutes to school with their child.

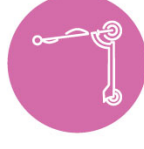
PLAN YOUR ROUTE TO VIEW ROYAL



In the 2019-20 school year, View Royal Elementary completed the CRD's Ready Step Roll - Active School Travel Planning program to encourage and support more families to walk and wheel to school more often.

HOW DO I USE THIS MAP?

1. Using Google Maps, find the shortest route to walk or bike to school. Explore suggestions for multiple possible routes!
2. Compare the routes suggested by Google Maps to the infrastructure (i.e. crosswalks) shown on this map.
3. With your child(ren), identify and talk about:
 - Safe crossing locations and behaviours
 - Landmarks to help with wayfinding
 - Caution points along the route
 - Safe behaviours and habits
4. **Plan, Prepare and Practice with your child** to build their confidence and ability to walk and wheel to and from school with friends or independently!



WHAT IF WE NEED TO DRIVE?

Walk and wheel part way to school to skip the drop off loop line up!

1. **Use Drive to Five parking** available at Pheasant Ln Park off and along Burnett Rd (see map).
 - a. Park and Stroll - park and accompany your child on their walk to school
 - b. Kiss and Go - allow your child to walk independently to school
2. **Talk to classmates/neighbours** to see if you can arrange or join a group to drive, ride or walk with!
3. **Try walking and wheeling on a weekend...** it might be more doable than you think!



Appendix B: **Action Travel Plan – View Royal Elementary**

The Action Travel Plan has been grouped for consideration under three tables:

Table A: Ready Step Roll Action Travel Plans - Suggested Priority Actions

Table B: School Property – Suggested Priority Actions

Table C: Ready Step Roll – Education and Encouragement Activities

***Suggested Actions** subject to respected jurisdiction consideration, approvals and budgetary processes

Table A: Ready Step Roll Action Travel Plans - Suggested Priority Actions

Ready Step Roll (RSR) Priority Actions				
Engineering – Responsibility of Township of View Royal unless otherwise noted.				
Orange shading: Higher priority noted in consultation process that would encourage active transportation mode shift				
Location	Consultation Feedback	*Suggested Action	Timeline	Supporting Initiatives
E&N Rail Trail	Lack of compliance from trail users at 4-way stops at trail/road intersections (bikes usually only yield)	VR staff and CRD Parks to consult with other municipalities to consider changing (with signage) to: <ul style="list-style-type: none"> • Yield for bikes on trail • Stop for all on road traffic (vehicles, bikes) CRD Parks investigate suggested action implemented region-wide where sightlines permit.	In progress	CRD Parks Master Plan VR Master Travel Plan VR Traffic Planning Initiatives CRD – Ready Step Roll (RSR)
	High speeds from cyclists during school pick up and drop off hours	CRD Parks install School Zone signage along trail at VR Elementary	In progress	CRD – RSR CRD Parks
	Poor sight lines at Galloping Goose and E&N Intersection	CRD Parks to perform vegetation maintenance at intersection	Annually as needed	CRD – RSR CRD Parks
	Personal safety concerns	School Administration to continue efforts to minimize bullying and to remind school body trail users to dress for the season -- wear lights & appropriate clothing	Annually as needed	School VR PAC
Glenairlie Dr	Cars parked on side of road block pedestrian path and visibility at intersections and trail entrances	Consider reviewing residential parking along Glenairlie to minimize pedestrian visibility issues	Ongoing	VR Traffic Planning Initiatives
	Excessive vehicle speeds	Monitor vehicular speeds on south side of Glenairlie Dr	Ongoing	VR Traffic Planning Initiatives

***Suggested Actions** subject to respected jurisdiction consideration, approvals and budgetary processes

Ready Step Roll (RSR) Priority Actions				
Engineering – Responsibility of Township of View Royal unless otherwise noted.				
Orange shading: Higher priority noted in consultation process that would encourage active transportation mode shift				
Location	Consultation Feedback	*Suggested Action	Timeline	Supporting Initiatives
Helmcken Rd	Excessive vehicle speeds in school zone	Applied on-road painted “School Zone” Box at Jedburgh Rd and Gull Rd.	Completed	VR Traffic Planning Initiatives
	Hedges in roundabout limits vehicle sightlines of pedestrians	Perform vegetation maintenance at roundabout	Completed Continue as needed	VR Parks
	Poor stopping compliance from motorists at roundabout crossings	School Administration encourage students to use the pedestrian activated flashing crosswalk with crossing guard in front of school	In Progress	School VR PAC
	Bike lanes feel narrow	<ol style="list-style-type: none"> 1. Consider adding flexible bollards to prevent vehicles from entering bike lane - westbound traffic where bike lane starts after E&N pedestrian overpass 2. Consider measuring road and lane widths to see if adjustments can be made with painted lines 	TBD	VR Traffic Planning Initiatives
Old Island Hwy	Concerns for high vehicle volumes at Jedburgh and Stormont	Encourage active transportation/alternate route options	In Progress (Long Term)	VR Master Travel Plan
	Concerns for high vehicle speeds	Monitor; assess need for additional enforcement	As needed	VR Traffic Planning Initiatives
	Concerns that Helmcken Rd. crossing time may be too short for pedestrians	Count down timer displaying countdown earlier for pedestrians to know how much time left in crosswalk	Completed	VR Traffic Planning Initiatives
	Concerns for poor stopping compliance from motorists at red lights	<ol style="list-style-type: none"> 1. Monitor; assess need for additional enforcement 2. CRD to coordinate Think of Me – ICBC in classes 	In Progress	<ol style="list-style-type: none"> 1. VR Traffic Planning Initiatives 2. CRD – RSR

*Suggested Actions subject to respected jurisdiction consideration, approvals and budgetary processes

Ready Step Roll (RSR) Priority Actions				
Engineering – Responsibility of Township of View Royal unless otherwise noted.				
Orange shading: Higher priority noted in consultation process that would encourage active transportation mode shift				
Location	Consultation Feedback	*Suggested Action	Timeline	Supporting Initiatives
Old Island Hwy (continued)	Concerns crossing time at Knollwood Rd/ Kislingbury Ln (connector to E&N) may be too short for cyclists	Review the timing signal sheet and make adjustments where it does not have detrimental impact to traffic flow	2020	VR Traffic Planning Initiatives
Rudyard Road	Motorists use this road to avoid traffic during rush hour (especially at CFB-Esquimalt rush hour); vehicle volumes/speeds VR conducted speed monitoring in 2014, 2016 and 2018 showing 30km compliance	1. Consider additional school zone signage at Rudyard and Helmcken 2. VR staff - Discussions with Military Base may be beneficial 3. CRD to coordinate Think of Me curriculum (ICBC) in classes 4. School Administration to encourage parents/guardians to park at Drive-to-5 sites instead, minimizing hazards traffic and slipping hazards for students	1. Completed 2. TBD 3. 2020 4. 2020	1. VR Traffic Planning Initiatives 2. TBD 3. CRD-RSR 4. School Administration
Stormont Road	Concerns with vehicle speeds and volumes;	1. VR conducted speed monitoring twice in 2019 showing 30km compliance	1. Annually (ongoing)	1. VR Traffic Planning Initiatives
	Motorists use this road to avoid rush hour traffic	2. CRD to provide education and awareness to pedestrians/motorists: Think of Me – curriculum (ICBC)	2. 2020	2. CRD – RSR
	Vegetation maintenance required to increase pedestrian visibility	Request hedge maintenance along sidewalks on Stormont/Glenairlie property	In progress	VR Parks

*Suggested Actions subject to respected jurisdiction consideration, approvals and budgetary processes

Table B: School Property – Suggested Priority Actions

School Property - Responsibility of School and School District 61			
Location	Consultation Feedback	Suggested Action	Timeline
School Parking Lot	Congestion on Helmcken from vehicles turning left into parking lot	1. School and CRD to reduce drop-offs at school by promoting Drive-to-5 locations. Potential locations: Pheasant Park and Burnett St.	2020 - CRD Ongoing – school
	Congestion in parking lot from vehicles disobeying drop-off regulations	2. CRD to create Infrastructure map with Drive-to-5 sites 3. School Administration to send out reminder letters for parents that drop off area is a no stopping zone	2020 – CRD Ongoing – school
	Consider Staff Parking lot relocation to minimize number of pedestrians in parking lot area	Realign school crossing walk to align with basketball court once new staff parking lot is established	2021 – TBD once structures are relocated
Bike & Scooter Parking	Need for additional bike & scooter parking	CRD - purchased school new bike & scooter rack & will cover the cost of installation via SD VR school admin will work with SD61 to determine best location for installation	SD61 will install in 2020

*Suggested Actions subject to respected jurisdiction consideration, approvals and budgetary processes

Table C: Ready Step Roll – Education and Encouragement Activities

CRD’s Ready Step Roll program - Education and Encouragement activities		
Activity/Timeline	Details	Involvement
<p>Walk and Wheel to School Week <i>Annually - 2nd week of October</i></p>	<p>CRD campaign - a fun and free weeklong campaign that celebrates and encourages students and their families to choose active travel for all or part of their usual commute to school.</p> <p>Campaign includes events, travel tracking, resources and support for schools and parents, including information on the benefits of active travel and prizes for participation.</p>	<p>October 2019 – CRD hosted this event at current RSR schools</p> <p>Optional Ongoing → schools may register annually at: www.crdwalkwheel.ca</p>
<p>Drive to 5 <i>Ongoing – Sites at View Royal Park (Pheasant Ln) and Burnett St</i></p>	<p>CRD initiative – Schools can identify nearby parking locations that are about a five-minute walk from the school. Families that must drive are encouraged to try the Drive to 5 sites to help alleviate traffic in the drop off loop while getting the health benefits of a short walk.</p> <p>CRD Drive to 5 signs were provided to View Royal in 2020.</p>	<p>2019-20 – CRD with school and PAC to support and promote</p> <p>Optional Ongoing → School and PAC</p>
<p>Walking School Bus <i>Optional initiative</i></p>	<p>CRD initiative – Walking School Buses can be held formally by the school/PAC or informally amongst neighbours.</p> <p>Formal Walking School Buses can find a designated location where parents can drop their kids off in a “Kiss and Go” setting, before walking to the school together. Where resources are limited, families can coordinate walking with their neighbours where possible to provide safety in numbers.</p>	<p>Optional Ongoing → School and PAC</p>
<p>Bike Skills Courses and Bike Rodeos</p>	<p>CRD – coordination of Bike Skills Course in 2020.</p> <p>2020 opportunity to pair with provincially funded pilot program for grades 4 & 5 to improve student’s cycling capabilities (in-class skills and parking lot blacktop ride). Greater Victoria Bike to Work Society will organize and deliver courses at schools.</p>	<p>Spring 2020 – CRD coordinated bike skills for View Royal</p> <p>Optional Ongoing → PAC to sponsor similar Bike Skills Course/Bike Rodeo</p>

*Suggested Actions subject to respected jurisdiction consideration, approvals and budgetary processes

View Royal Elementary – Action Travel Plan – CRD Ready Set Roll (RSR) 2019-20
March 24, 2020

Activity/Timeline	Details	Involvement
Bike to School Week <i>Annually – last week of May</i>	<p>Greater Victoria Bike to Work Society program held in May that encourages everyone to commute to and from school/work by bike. Multiple celebration stations are typically set up across the region during this week.</p> <p>CRD will host a Hands Up Survey during this week and will track and report cycling trips the Bike to Work Society on View Royal’s behalf.</p>	<p>Spring 2020 – CRD automatically registered View Royal</p> <p>Optional Ongoing → school may register annually at: www.biketowork.ca/victoria</p>
Think of Me Campaign <i>Held as part of Ready Step Roll Program</i>	<p>An initiative in partnership with ICBC Road Safety and school police liaisons.</p> <p>This program teaches students K-3 safety tips to consider when walking to and from school. Students are asked to create “tickets” with a safety message that are handed out by police patrolling the school zone as part of an educational campaign.</p>	<p>2020 – CRD held Think of Me at View Royal</p> <p>ICBC curriculum: www.icbc.com/road-safety/teaching/Pages/For-educators.aspx</p>
Action Plan Status Update <i>Annually - September</i>	<p>Annual update and check in on infrastructure improvements identified in the action plan that will be completed by View Royal municipality or School District 61 depending on budget availability and priority.</p>	<p>Annually in September – Municipality and SD61</p>
School Streets <i>Optional initiative</i>	<p>Encourage trial of concept -- Potential School Streets could include Rudyard Rd (Helmcken Rd to Stormont Rd)</p> <p>School Streets Guidebook: www.crd.bc.ca/docs/default-source/regional-planning-pdf/transportation/active-transportation/school-streets-guidebook_pages.pdf</p>	<p>Optional to try → Could be piloted by School & PAC volunteers in tandem with other PAC/School events</p>
PAC - Active Transportation Committee <i>Optional Initiative</i>	<p>Encourage PAC to identify Active Transportation Lead/Committee to support View Royal Active Transportation initiatives in future years.</p>	<p>TBD - CRD to create guiding resource</p> <p>Optional Ongoing → PAC</p>

*Suggested Actions subject to respected jurisdiction consideration, approvals and budgetary processes

Consultation Data

Active School Travel Report

View Royal Elementary 2019/20

Key consultation findings are presented in the *Active School Travel Report – View Royal Elementary 2019/20*.

This appendix contains the data collected from the main sources of consultation as describe below. Please note that additional verification consultation was conducted as outlined in the main section of the report; **this qualitative data is not presented here.**

A. Hands Up Survey – Results

Collects in-class quantitative data from students by asking how students travelled to school and how they will be travelling home after school. Collected Monday May 13 – Thursday May 17 2019. The anticipated Spring “Hands Up Survey” was cancelled das schools were not in session due to Covid-19.

B. Online Baseline Parent Travel Survey – Data

Collects qualitative and quantitative data from parents to gain a deeper understanding of how students are travelling, as well as why they choose or may opt to change their travel mode. Conducted at the beginning of the program as baseline data May 13 – June 16, 2019.

C. School Neighbourhood Walkabout – Data

Collects qualitative data from public and professional stakeholders to determine infrastructure improvements. The route followed on the Walkabout is developed through the analysis of the Online Parent Travel Survey comments and results. The View Royal Walkabout took place on October 23, 2019, from 7:45am – 9:45am

A. Student Hands Up Survey

Date conducted: Monday May 13 – Thursday May 17, 2019 (only 4 days due to PD day)

Total students trips counted: 1969

How did you travel to and from school today?

Mode To/From	TO	FROM	Total
Bike	2.0%	1.5%	1.8%
Car	64.5%	64.0%	64.3%
Carpool	3.1%	1.2%	2.3%
Public Transit	0.9%	1.3%	1.1%
Roll	1.6%	2.4%	1.9%
School Bus	1.3%	0.7%	1.1%
Walk	24.6%	27.3%	25.7%
Walk part-way	2.0%	1.5%	1.8%
Total	100.0%	100.0%	100.0%

By Grade

Mode By Grade	K	1	1/2	2	3	3/4	4/5	Total
Bike	2.2%	2.3%	0.4%	0.0%	0.3%	3.6%	3.1%	1.8%
Car	56.3%	73.2%	76.2%	50.7%	66.1%	51.4%	65.6%	64.3%
Carpool	5.6%	0.0%	5.9%	2.1%	0.0%	0.0%	1.5%	2.3%
Public Transit	0.8%	0.0%	4.7%	0.0%	0.0%	0.7%	1.0%	1.1%
Roll	2.2%	0.0%	2.0%	10.0%	1.5%	2.9%	0.4%	1.9%
School Bus	0.3%	2.7%	2.7%	0.0%	0.0%	2.9%	0.4%	1.1%
Walk	32.2%	19.5%	6.6%	25.0%	31.9%	38.4%	26.7%	25.7%
Walk part-way	0.3%	2.3%	1.6%	12.1%	0.3%	0.0%	1.3%	1.8%
Total	100.0%	100.0%	100.0%	100.0%	100.0%	100.0%	100.0%	100.0%

By Day

Mode By Day	Mon	Tues	Wed	Thurs	Fri	Total
Bike	2.3%	1.0%	2.4%	1.6%	0.0%	1.83%
Car	60.6%	67.8%	63.5%	65.2%	0.0%	64.30%
Carpool	4.6%	1.0%	1.6%	2.0%	0.0%	2.29%
Public Transit	0.6%	1.0%	1.6%	1.0%	0.0%	1.07%
Roll	2.5%	1.6%	1.8%	1.8%	0.0%	1.93%
School Bus	1.0%	1.0%	1.4%	0.8%	0.0%	1.07%
Walk	27.5%	24.1%	25.9%	25.6%	0.0%	25.75%
Walk part-way	0.8%	2.4%	1.8%	2.0%	0.0%	1.78%
Total	100.0%	100.0%	100.0%	100.0%	0.0%	100.0%

B. Online Parent Survey

Date conducted: Monday, May 13 – Sunday, June 16, 2020

Total number of surveys received: 167

“How far away does the student live from school?”

Distance	Count of How far away from the school does the student live?
Less than 0.5 km	34.7%
0.5 to 1.5 km	27.4%
1.6 to 3 km	22.6%
3.1 to 5 km	8.9%
Over 5 km	6.5%
Grand Total	100.0%

“How far away does the student live from school?” (Sorted by travel mode)

	Less than 0.5 km	0.5 to 1.5 km	1.6 to 3 km	3.1 to 5 km	Over 5km	Grand Total
Active Travel						
Bicycle	0.0%	2.9%	0.0%	0.0%	0.0%	0.8%
School bus	0.0%	0.0%	10.7%	0.0%	0.0%	2.4%
Scooter/skate	0.0%	2.9%	0.0%	0.0%	0.0%	0.8%
Walk part of the way (at least one entire block)	0.0%	2.9%	10.7%	0.0%	12.5%	4.0%
Walk the whole way	79.1%	32.4%	7.1%	9.1%	0.0%	38.7%
Car						
Car (just your family)	20.9%	58.8%	64.3%	90.9%	87.5%	51.6%
Carpool (two or more families sharing)	0.0%	0.0%	7.1%	0.0%	0.0%	1.6%
Grand Total	100.0%	100.0%	100.0%	100.0%	100.0%	100.0%

“How does your child(ren) usually travel to school?”

	Count of Mode To School
Active Travel	
Bicycle	0.8%
School bus	2.4%
Scooter/skate	0.8%
Walk part of the way (at least one entire block)	4.0%
Walk the whole way	38.7%
Car	
Car (just your family)	51.6%
Carpool (two or more families sharing)	1.6%
Grand Total	100.0%

How does your child(ren) usually travel FROM school?"

	Count of Mode To School
Active Travel	
Public transit	0.8%
School bus	3.2%
Scooter/skate	0.8%
Walk part of the way (at least one entire block)	2.4%
Bicycle	1.6%
Car	
Car (just your family)	46.8%
Carpool (two or more families sharing)	0.8%
Grand Total	100.0%

"How would you prefer to travel to school?"

Preferred Mode	Count of Preferred Mode
Bicycle	21.0%
Car (just your family)	11.3%
Carpool (two or more families)	1.6%
Public transit	0.8%
School bus	12.1%
Walk part of the way (at least one entire block)	3.2%
Walk the whole way	50.0%
Bicycle	21.0%
Grand Total	100.0%

Reasons Driven To School	Count
Sum of ReasonDriven_Distance from home is too far	20
Sum of ReasonDriven_Convenience/time pressures	35
Sum of ReasonDriven_Traffic danger/concerns	18
Sum of ReasonDriven_Weather	7
Sum of ReasonDriven_Lack of equipment (e.g. bicycle)	1
Sum of ReasonDriven_Personal safety concerns	11
Sum of ReasonDriven_Lack of interest in walking/wheeling	3
Sum of ReasonDriven_Age of student	20
Sum of ReasonDriven_Physical disability or health limitations (self or child)	2

What would encourage you to let your child(ren) walk to/from school?"

Would encourage walking if...	Count
Sum of EncourageWalk_Continuous sidewalks/trails	53
Sum of EncourageWalk_Lower vehicle speeds	23
Sum of EncourageWalk_Lower vehicle traffic volumes	30
Sum of EncourageWalk_Additional marked crossings	13
Sum of EncourageWalk_Increased lighting	5

“What would encourage you to let your child(ren) bike to/from school?”

Would encourage biking if...	Count
Sum of EncourageBike_Connected bicycle infrastructure	26
Sum of EncourageBike_Lower vehicle speeds	16
Sum of EncourageBike_Less vehicle traffic	32
Sum of EncourageBike_More street crossing for bikes	8
Sum of EncourageBike_More lighting	4
Sum of EncourageBike_Secure/covered bike parking at the school	21
Sum of EncourageBike_Better cycling skill/capability of my child	31

“What would encourage you to let your child(ren) walk & wheel to/from school?”

I will encourage walk and wheel by	Count
Sum of Motivates_Getting physical activity/exercise	105
Sum of Motivates_Environmental benefits	61
Sum of Motivates_Saving time	25
Sum of Motivates_Safer than driving	14
Sum of Motivates_More convenient than driving	31
Sum of Motivates_More fun than driving	56
Sum of Motivates_Cheaper than driving	44

Does your child own a suitable bike?

	Count of Suitable Bike Child
No	18.03%
Yes	81.97%
Grand Total	100.00%

Do you (the parent) own a suitable bike?

	Count of Suitable Bike Child
No	28.46%
Yes	71.54%
Grand Total	100.00%

Would you allow your child to walk or bike to/from school?”

Row Labels	Count of Allow Walk/Bike
Haven't considered it	7.26%
No	13.71%
Yes	79.03%
Grand Total	100.00%

Distribution of travel modes in students in grades K-5

Grade by Mode	Kindergarten	Grade 1	Grade 2	Grade 3	Grade 4	Grade 5	Total
Active Travel							
Bicycle	12.00%	10.71%	18.75%	10.34%	0.00%	0.00%	9.38%
Public transit	0.00%	0.00%	0.00%	3.45%	5.26%	0.00%	1.56%
Scooter/skate	4.00%	0.00%	0.00%	0.00%	5.26%	0.00%	1.56%
Walk part of the way (minimum 1 block)	4.00%	3.57%	0.00%	10.34%	10.53%	0.00%	5.47%
Walk the whole way	60.00%	53.57%	62.50%	55.17%	52.63%	81.82%	58.59%
Car							
Car (just your family)	20.00%	28.57%	12.50%	17.24%	26.32%	18.18%	21.09%
Carpool (two or more families sharing)	0.00%	3.57%	6.25%	3.45%	0.00%	0.00%	2.34%
Grand Total	100.00%	100.00%	100.00%	100.00%	100.00%	100.00%	100.00%

Distribution of travel modes across genders

Mode by Gender	Female	Male	Grand Total
Active Travel			
Bicycle	1.72%	0.00%	0.82%
School bus	3.45%	1.56%	2.46%
Scooter/skate	0.00%	1.56%	0.82%
Walk part of the way (at least one entire block)	6.90%	1.56%	4.10%
Walk the whole way	27.59%	46.88%	37.70%
Car			
Car (just your family)	56.90%	48.44%	52.46%
Carpool (two or more families sharing)	3.45%	0.00%	1.64%
Grand Total	100.00%	100.00%	100.00%

Distribution of travel modes used by students compared to distance travelled to/from school

Mode to School	Bicycle	Public transit	Scooter/skate	Walk part of the way	Walk the whole way	Car	Carpool	Grand Total
Less than 0.5 km	0.00%	0.00%	0.00%	0.00%	79.07%	20.93%	0.00%	100.00%
0.5 to 1.5 km	2.94%	0.00%	2.94%	2.94%	32.35%	58.82%	0.00%	100.00%
1.6 to 3 km	0.00%	10.71%	0.00%	10.71%	7.14%	64.29%	7.14%	100.00%
3.1 to 5 km	0.00%	0.00%	0.00%	0.00%	9.09%	90.91%	0.00%	100.00%
Over 5 km	0.00%	0.00%	0.00%	12.50%	0.00%	87.50%	0.00%	100.00%
Grand Total								100.00%

Safety concerns sited regarding route to/from school at top three locations:
(Edited for privacy)

View Royal Elementary

Locations

- **Helmcken (25)** – Vehicle volume and speed, roundabout (vehicle speed, vehicles failing to stop for pedestrians), personal safety, bike lane's proximity to vehicles, poor pedestrian safety, crosswalk (vehicle not stopping for pedestrians)
- **Old Island Highway (12)** – Vehicle volume and speed, lack of sidewalks, not enough time to cross intersection/feel unsafe (OIH and E&N Trail, Six Mile Rd)
- **Rudyard (9)** – Vehicle volumes and speeds, lack of sidewalks, lack of bike lanes, lack of visibility
- **Glenairlie (9)** – No sidewalks, vehicle speeds, visibility of pedestrians
- **E&N (8)** – Personal safety, bullying, bike speeds
- **Island Highway (7)** – vehicle volumes and speed, not enough time to cross intersection
- **Craigflower (5)** – Traffic volume
- **Stormont (5)** – Vehicle volumes and speed, no sidewalk or bike lane
- **Admirals (3)** – Vehicle speeds, bullying
- **Gorge (3)** – Vehicle volumes, intersection at Admirals (pedestrian safety)
- **Six Mile Rd (2)** – Vehicle volumes, running red light (at Old Island Highway), unsafe access to the Galloping Goose
- **Watkiss (2)** – Vehicle speed, personal safety
- **Burnett (1)** – Pedestrian safety
- **Burnside (1)** – Vehicle volumes and speed
- **Glentana (1)** – Lack of safe access to the Galloping Goose

General comments regarding challenges and opportunities for active transportation at Rogers:
(Edited for privacy)

- Parent's distance to work/time constraints requires driving (4)
- Travel distance (inc. out of catchment) (4)
- Lack of secure bike parking (3) – bike lockers by daycare, locate racks at both ends of the school
- Child's age (3)
- Concern about vehicles failing to stop at crosswalks (2)
- No early morning supervision (2)

- Need for kids road safety education (2)
- Concern about adult cyclists (speed, pass too close) (2)
- Not comfortable having my child bike/scoot alone (2)
- No sidewalks, lack of visibility, high traffic volumes
- Weather
- Support for walking school bus or bike train
- Provide rebates/subsidize active transportation clothing and gear
- Personal safety

C. Walkabout Summary Notes

Date conducted: October 23, 2019 (7:45-9:45 am)

Total number participated: 12

Attendees: Renee Pick (School Admin), John Rosenberg (View Royal Engineering), Janelle Hutch (Island Health), Aaron Foster (SD61), Todd Shannon (CRD Parks), Kyle Ross (RCMP), Randie Johal (RCMP) Parent Representation, Jay Douillard (CRD), and Colby Heddon (CRD)

Walkabout Discussion Point 1: Rudyard Road at Glenairlie Rd and Stormont Rd

Existing infrastructure and mitigation efforts:

- Limited sidewalks along Rudyard and Glenairlie
- Gated pedestrian access to View Royal Elementary – open during school hours

Issues Identified:

- Hedge maintenance required along corner unit on Rudyard/Stormont property
- Used as a cut-through for drivers resulting in high vehicle volumes during rush hour
- Parked vehicles create safety concerns for students walking along and crossing Rudyard
- Grassy slope along Rudyard can be slippery for students using hill as cut-through

Potential Solutions:

- Town of View Royal is working with residents to identify possible long term solutions
- View Royal to send letters to request hedge trimming along Rudyard/Stormont
- Reduce volume of traffic using Rudyard as drop off through promotion of Drive to 5 locations

Walkabout Discussion Point 2: Helmcken Road

Existing infrastructure:

- Sidewalks and bike lanes present on both sides of the road
- High visibility “School Zone” paint on road
- Digital Speed Reader at start of School Zone
- Pedestrian activated crossing with crossing guard at main school crossing
- Pedestrian overpass with accessible entrance points to the E&N rail trail

Location 1: Helmcken Rd at Old Island Highway

Existing Infrastructure/mitigation efforts:

- Signalized intersection with limited sidewalk infrastructure along Old Island Highway

Issues Identified:

- Crossing time may be too short for some pedestrians
- Congestion along Old Island Hwy causes drivers to run through red lights

Potential Solutions:

- View Royal to investigate the potential to adjust pedestrian crossing at intersection to delay flashing hand signal
- Favourite Routes Mapping Activity to identify alternative routes (use of Jedburgh Rd and Stormont Rd crossings)

Location 2: Helmcken Roundabout

Existing Infrastructure/mitigation efforts:

- Crosswalks at both sides of roundabout
- Limited bike lanes at each end of roundabout
- Pheasant Lane has parking for Drive to 5 location

Issues Identified:

- Vehicles not stopping for pedestrians
- Vehicles speeding along Helmcken
- Hedges may cause sight line obstructions for pedestrians using cross walks

Potential Solutions:

- Education around crossing – ask students/parents to walk up to crosswalk with crossing guard
- Installation of flashing lights at crossings
- View Royal to ask road crews to maintain hedge trimmings to minimize sight line obstructions
- Potential to paint road with high visibility School Zone markings

Walkabout Discussion Point 3: E&N Rail Regional Trail

Existing infrastructure:

- Multiple accessible access points within View Royal Elementary catchment
- Separated regional trail connecting commuters and recreation users from the Westshore to Core Area

Issues Identified:

- Concerns around personal safety on trail
- High speeds from bicycles sharing path

Potential Solutions:

- CRD Parks to install school zone signage to encourage riders to cruise with courtesy
 - Note: Regional trails do not currently have an enforced speed limit
- School administration to continue resolving school conflicts on trails as they arise

Walkabout Discussion Point 4: School Drop Off Area

Issues Identified:

- Vehicles using drop off zone incorrectly causing congestion during drop off/pick up hours
- Drivers not stopping for students crossing at drop off entrance

Potential Solutions:

- School Administration to send out parent notices addressing drop off loop concerns
- Potential to have PAC/volunteers to help with morning enforcement in No Stopping Zone
- Potential to realign crosswalk with basketball court once new staff parking lot is established
- View Royal to include expanding View Park parking lot in their master plan to determine viability of Drive to 5 location.

Additional Discussion Points

Existing Infrastructure:

- School Administration to promote use of Drive to 5 locations along Pheasant Ln
 - Potential to use Helmcken Centennial Park as Drive to “5” location (View Royal to request opening of gate for 8:15am)
 - Potential to have limited use of Drive to 5 at Namaste Restaurant – may be able to develop partnership with new business
- Increased bike education
 - Potential to host Bike Rodeo to increase student education and bike skills

The 6 E's of Active School Travel

Appendix D: Online Resources for School Communities



WHAT ARE THE 6 E'S OF ACTIVE SCHOOL TRAVEL PLANNING?



EQUITY

Ensures that the RSR program is benefiting all regional demographics groups, with particular attention to ensuring safe, healthy, and fair outcomes for all students of diverse family, cultural, socio-economic backgrounds, abilities and identities.



EVALUATION

Collect data and user insights to understand school-neighborhood travel context, to identify appropriate approaches, opportunities to improve the effectiveness of an approach for respective school communities while monitoring changes over time.



ENGINEERING

Make physical improvements to the streetscape and built environment to improve the walk-ability and wheel-ability of a given area, with a focus on the immediate school-neighbourhood, common/high-use routes, and on school property.



ENFORCEMENT

Increase awareness and compliance of traffic laws, parking regulations, drop-off/pick-up guidelines and personal safety with a focus on the immediate school-neighbourhood and on school property.



EDUCATION

Change perceptions of active travel and support programs to improve safety, reduce conflicts between transportation modes, and build the confidence and skills needed to safely and confidently walk or wheel to and from school.



ENCOURAGEMENT

Support continued participation by promoting walking and wheeling to students and families as a fun, easy, practical, and inclusive way to get to and from school.

THE 6 E'S APPROACH TO ACTIVE SCHOOL TRAVEL PLANNING



The 6 E's of Active School Travel Planning – Resources for School Communities is an [online resource](#) which provides schools with the ideas, tools and activities needed to build and support the ongoing internal capacity needed to continue a school-wide active travel culture.

The 6 E's Approach to Active Travel aims to be a comprehensive, integrated and sustainable strategy to build school-neighbourhoods that are walkable and wheelable for all ages and abilities, by mitigating and addressing barriers preventing accessible active travel.

Students, families, educators, and Active Travel School Leaders are encouraged to [access the resources online](#) through the [Ready Step Roll webpage](#) to support school community equity, education, and encouragement active travel initiatives, while complimenting evaluation, engineering, and enforcement actions facilitated by local government engineers, the CRD and community partners.

Visit our webpage to learn more about the [6 E's approach to active travel](#) with tips, tools and ideas to support active travel at your school!

6 E's of Active Travel

The 6 E's of active travel describes the multi-faceted approach used by Ready Step Roll to build capacity within school communities after they have completed the program. The resources below have been developed as part of the Ready Step Roll program, but all resources have been made available for public use in all regional school communities.

Education	Equity	Evaluation	Engineering	Enforcement	Encouragement
-----------	--------	------------	-------------	-------------	---------------

With the right training, students can walk and wheel to school more often while enjoying increased physical skill sets and self-confidence. School communities learn about active travel benefits and caution points through road and traffic safety education and bike skills courses, developed in partnership with police, ICBC, and local non-profit organizations.

1. **Road Safety Scavenger Hunt**- Keep your eyes peeled! This resource challenges families to find different infrastructure, traffic signs, special vehicles, and neighbours while you walk through your community. Use it to teach your child about traffic safety or to change up your daily walks.
2. **Move your Feet on the Street Challenge** - How many ways can you move on your street? We're challenging kids to travel their "home stretch" using as many different forms of active transportation as possible. Includes a warm up brainstorming activity, followed by hands-on learning and finally, thematic-podcasts to help kids wind down after moving.
3. **Ready Step Roll Bingo** - On your marks, get set, BINGO! Challenge family members to be the first player to complete a line on their bingo card while performing different strength building movements, exercises, and stretches to help stay active at home.
4. **Backyard Adventure Course** - Get creative and see how you can move through your homemade obstacle course! This resource includes ideas on how to transform common household objects and toys into different obstacles for kids to maneuver through in the driveway, backyard, or even the living room!
5. **Physical Literacy Resource List**- a growing master list containing links to websites with ideas and activities to help keep kids active while they develop personal physical literacy. This list will continue to be updated.
6. **ICBC Road Safety Resources for Teachers**

[Equity »](#)