



École Quadra Elementary School

Active School
Travel Report
2020/21



READY STEP ROLL
ACTIVE SCHOOL TRAVEL PLANNING

Facilitated by the CRD and published August 2021. Proudly supported by:



Contents

Active School Travel Planning	4
Benefits of Active Travel	5
CRD’s Ready Step Roll Initiative	6
School Profile and Catchment Travel Context	8
6 E’s Approach to Active School Travel Planning	9
Equity	10
Evaluation	11
Consultation	12
School Travel Snapshot	13
Active School Travel Infrastructure Challenges	16
Active School Travel Opportunities	17
Action Plan Highlights	18
Engineering	19
Enforcement	20
Education	21
Encouragement	22
Equity	23
New Active Travel Initiatives at Quadra Elementary	24
Plan Your Route to Quadra Elementary and Map	27
Keep Rolling with ‘Next Steps’	29
Partner Key Contacts and Links to Resources	30
Appendices	30

Appendices

Appendix A – Quadra Elementary – Plan Your Route to School Map and Activity

Appendix B – Quadra Elementary – Action Plan

Appendix C – Quadra Elementary Consultation Data and School Newsletters

Appendix D – 6 E’s of Active School Travel - Online Resources for School Communities

ACTIVE SCHOOL TRAVEL PLANNING



Active School Travel Planning aims to increase rates of students walking and wheeling to/from school, using a school catchment/neighbourhood-based planning process. Walking and wheeling encompasses bikes, scooters, rollerblades, skateboards, using a wheelchair or riding the bus fully or part-way to and from school. Active School Travel Planning initiatives have already been successfully implemented in many communities across Canada and internationally. The [“International Best Practices in Regional Planning for School Travel”](#) (Ryerson University, Toronto, April 2016) looks at a number of case studies and key learnings from around the world.

The [Capital Regional District](#) (CRD) [Board Priorities](#) and [Corporate Plan](#) identifies *transportation* as a key regional priority and *envisions that residents have access to convenient, green and affordable multi-modal transportation systems that enhance community well-being*. To further this priority through behaviour change and infrastructure improvement at a foundational level, the CRD coordinates the active and safe routes to school planning initiative, known as the **Ready Step Roll – Active School Travel Planning** initiative.

Active Travel (AT) describes using any mode of transportation that relies on human-power to get to your destination - fully or part way.



Common Modes of Active Travel

BENEFITS OF ACTIVE TRAVEL

Active travel describes using any form of transportation that relies on human-power to move. This includes **walking and wheeling** (bike, skateboard, rollerblades, scooter, wheelchair).

Students who **walk and wheel** to and from school (fully or part way!) can:



Build individual confidence & capability



Arrive alert & ready to learn after a short burst of activity



Become more self-reliant, supporting families & household schedules



Create safer streets by reducing congestion before & after school



Improve their physical & mental health



Help save time & money by avoiding waiting in school traffic



Support safety in numbers & create connected communities



Participate in climate action by lowering community Green House Gas emissions

CRD'S READY STEP ROLL INITIATIVE

What is the Ready Step Roll initiative?



The Ready Step Roll (RSR) - Active School Travel Planning initiative works annually with five school communities and respective local government agencies to **encourage and enable more students to have the choice to use active travel to get to/from school**. Students who walk and wheel to/from their school or their bus stop arrive alert and ready to learn, while reducing regional GHG emissions to support safe and connected communities. The Ready Step Roll initiative is a comprehensive and sustainable approach to **making school-neighbourhoods more comfortable to walk and wheel**.

Working with partners, **RSR identifies and addresses safety and social barriers** to better support and enable active travel with confidence. The success of the initiative relies on **participatory partnerships** with provincial and local governments, school districts and schools (administration, Parent Advisory Councils [PACs] and students), along with the Insurance Corporation of British Columbia (ICBC), Island Health Authority, police forces, local businesses, and non-profits. Working together, the partners focus on creating solutions through **equity, evaluation, engineering, enforcement, education and encouragement**, known as our “6-E’s approach to active school travel planning”.

What is the active school travel planning process?

Over the 18-month RSR initiative (approximately January through to the following June), the CRD works collaboratively with partners to:

1. **Identify** schools and local governments that are **committed to working** together.
2. **Facilitate** the creation and implementation of a school-catchment **Active School Travel Report** to further enable and inspire active transportation mode choice. During the initiative, local active travel safety concerns on common school routes are identified via school travel surveys, a School-Neighbourhood Walkabout, as well as a variety of consultation activities.
3. **Build capacity** of the school for ongoing initiatives that focus on **Equity, Evaluation, Engineering, Enforcement, Education and Encouragement (the 6 E’s)**.

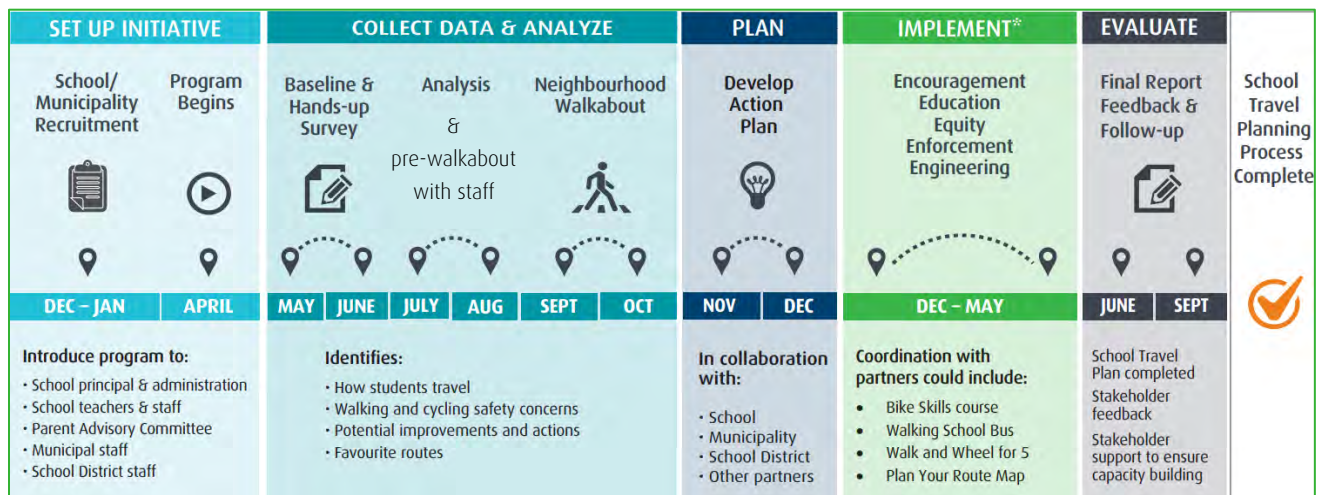
What is the goal of RSR?

Increase the rate of student and staff active travel trips to and from school by reducing barriers in active travel accessibility, safety, comfort and capacity.

Who are the key partners?

- **CRD** – Facilitator and Project Manager of the Ready Step Roll (RSR) initiative.
- **City of Victoria** – Jurisdictional owner of municipal roads, road right-of-way and municipal lands, provides local knowledge on street level infrastructure, assists in development of Action Plan, evaluates and considers proposed solutions, supports/undertakes implementation and follow-ups with school regarding engineering improvements post RSR initiative.
- **ICBC** – Offers expertise and partners with MoTI and local government for road safety improvements and provides educational resources for school communities.
- **School Administration and School District** – Provides insight into school sites and bussing, evaluates and considers implementation of proposed solutions on school property, and supports implementation of education and engagement initiatives during and post RSR initiative.
- **School Community (Parents/Guardians, PACs, and Students)** – Provides perspective on the school-neighborhood, identifies opportunities for safer drop-off/pick-up, contributes to action planning, and supports education and encouragement initiatives during and post RSR initiative.

What is the RSR timeline?



SCHOOL PROFILE & CATCHMENT TRAVEL CONTEXT



École Quadra Elementary School Profile

School District	School District 61
Local Government	City of Victoria
Catchment	Hillside-Quadra & Burnside, French Immersion catchment for Cloverdale
Neighbourhoods	Traditional School
Grades	K-5
2020 Enrollment	427 students
School-Based Active Travel Support	<ul style="list-style-type: none"> ➤ Two Crossing Guards; Quadra/Finlayson Intersection ➤ 8:40am - 2:30pm; school ground supervision is available 15 minutes before and after school bell ➤ Bike racks and active PAC
New! RSR Active Travel Initiatives (ongoing)	<ul style="list-style-type: none"> ➤ Three identified, unsupervised “Walk & Wheel for 5” sites and routes; see map on page 28 ➤ School supervision begins at 8:25am to encourage parents to “Kiss & Go” or “Park and Stroll” ➤ New scooter rack and bicycle shelter (funded outside of RSR) ➤ City of Victoria recently completed an Integrated Mobility Plan to guide improvements for pedestrians and cyclists in the Hillside-Quadra area ➤ New AAA Bike Route on Jackson St and Graham St now available

As of 2021, École Quadra Elementary School is one of 27 elementary schools in School District 61, located on the corner of a busy thoroughfare intersection area leading to the inner downtown core. The area is home to families of diverse backgrounds, cultures and household socio-demographics. The Quadra school catchment area covers both the Hillside-Quadra and Burnside communities which are bisected by Douglas and Blanshard Streets, due to its French immersion initiative.

From our baseline surveys, Quadra families demonstrated an interest in achieving higher active travel participation but cited concerns related to traffic and personal safety as common barriers. Separate from the RSR initiative, the City of Victoria will complete many infrastructure improvement projects in the coming years that will connect key gaps in the local active transportation network. The school community will benefit from many upcoming and recently completed improvements at the neighbourhood and local community levels as Quadra Elementary continues to work with partners to encourage active travel for their students, families and school staff.

6 E'S APPROACH TO ACTIVE SCHOOL TRAVEL PLANNING

The 6 E's approach to Active School Travel Planning aims to be a comprehensive and sustainable approach to making school-neighbourhoods more comfortable to walk and wheel, by identifying and addressing safety and social barriers to better support and enable active travel with confidence.



Equity

Ensure that the initiative is benefiting all demographic groups across the Capital Region, with particular attention to ensuring safe, healthy, and fair outcomes for all students of diverse family, cultural, socio-economic backgrounds, abilities and identities.



Evaluation

Collect data and user insights to better understand the school-neighbourhood context, to determine appropriate approaches, identify opportunities to improve the effectiveness of an approach for a given school community and monitor changes over time.



Engineering

Infrastructure upgrades to improve the comfort of walking and wheeling on streetscapes and built environments located within immediate school-neighbourhoods, on common/high-use routes, and on school property.



Enforcement

Crossing guards, school supervision and police working together to improve awareness and compliance of parking regulations, traffic laws, and personal safety with a focus on the immediate school-neighbourhood and on school property.



Education

Information and initiatives to improve perceptions of active travel to reduce conflicts between transportation modes and build the confidence and personal skills needed to safely and confidently walk or wheel to and from school.



Encouragement

Celebrate and promote walking and wheeling as easy, fun and inclusive ways to travel in our community, alone or with friends and family.

EQUITY



Ensure that the initiative is benefiting all demographic groups across the region, with particular attention to ensuring safe, healthy, and fair outcomes for all students of diverse family, cultural, socio-economic backgrounds, abilities and identities.

How does the RSR initiative integrate 'Equity' at a local government level?

- ✓ Works to consult with all relevant school and community/government partners by offering multiple engagement opportunities on a variety of platforms.
 - **In person:** Walkabout, PAC and principal meetings, mapping, engagement events, Hands-Up surveying method.
 - **Virtual:** Baseline School Travel Survey, email/phone consultation, access to website resources, material sharing with initiative partners.

How does the Ready Step Roll initiative integrate 'Equity' at a school community level?

- ✓ Works with PACs to **facilitate equity** into all opportunities and ideas
 - **Educational:** Works with PAC representative to facilitate PAC volunteer coordination for active travel events (bike skills etc.).
 - **Financial:** Hosts equipment exchange station (bikes, helmets, rain gear) at PAC and after-school events, shares available bursary and grant opportunities, and highlights continuing safety efforts that work to support all students (crossing guard appreciation).
- ✓ Works with School Administration to **address gaps in before and after supervision** to support family and work schedules.
 - Proposes "Walk & Wheel for 5", Walking School Bus or Bike Train initiatives.
 - Realignment of school ground supervision as needed.
- ✓ Works with School District Facilities and Transportation to address accessibility issues when travelling to/from school.
 - **Safe and accessible school sites:** Elimination of tripping hazards and improved wheelchair accessibility at school access points, pedestrian visibility issues at school access points, considers safety and accessibility of active travel near bus stops.



EVALUATION

Collects data and user insights to better understand the school-neighbourhood context, assess which approaches are appropriate, and identify opportunities to improve the approach and to monitor changes over time

To help better understand how students travel to and from school, why families choose to travel how they do, and what would encourage families to shift to active travel modes, the initiative collects data through various means of formal and informal consultation. The CRD evaluates and uses the data and insights of the school community to facilitate development of the Action Plan with the local government, school and other participating community members.

Hands-Up Survey

- Week-long daily survey taken in-class held at the beginning, middle and end of the initiative, to understand how students typically travel to and from school. This survey may be used as a school baseline throughout the initiative and in future years to gauge change over time.

Baseline School Travel Survey

- Online questionnaire answered by parents and guardians is a deeper dive into identifying current and preferred travel modes, specific barriers, safety concerns and suggestions to encourage families to shift towards using more active travel.

School-Neighbourhood Walkabouts

- Build on the school survey data to get a better understanding of the challenges families have walking and wheeling to school. Participants work together to brainstorm engineering, education and encouragement solutions. This information is used to create the Action Plan to guide improvements.

Personal Communications

- Meetings, email, phone conversations throughout the initiative with Principal, PAC and local government confirm collected data and facilitate the development of the Action Plan.

CONSULTATION

École Quadra Elementary - School Consultation Summary



108 Online School Travel Surveys, representing 25% of students (June 2020)



720 student trips recorded on Hands-Up Surveys (October 2020)*



In-School Encouragement & Engagement Activities

- Walk and Wheel to School Week (October 2020)
- Crossing Guard Appreciation (February 2021)
- Grade 4/5 Bike Skills (June 2021 – iRide)
- GoByBike Week (May/June 2021)
- ICBC “Think of Me” - K-3 Road Safety (May & Fall 2021)



One pre-walkabout with staff (school, municipal and CRD – August 2020)

One school neighbourhood walkabout (PAC, parents, school administration, municipal SD61, ICBC and CRD staff September 2020)



Six principal &/or PAC meetings (2020-21)



Numerous local government meetings, phone & email consultations focused on drafting the Action Plan (2020-21)

*Recorded over 4 days due to Pro-D day.

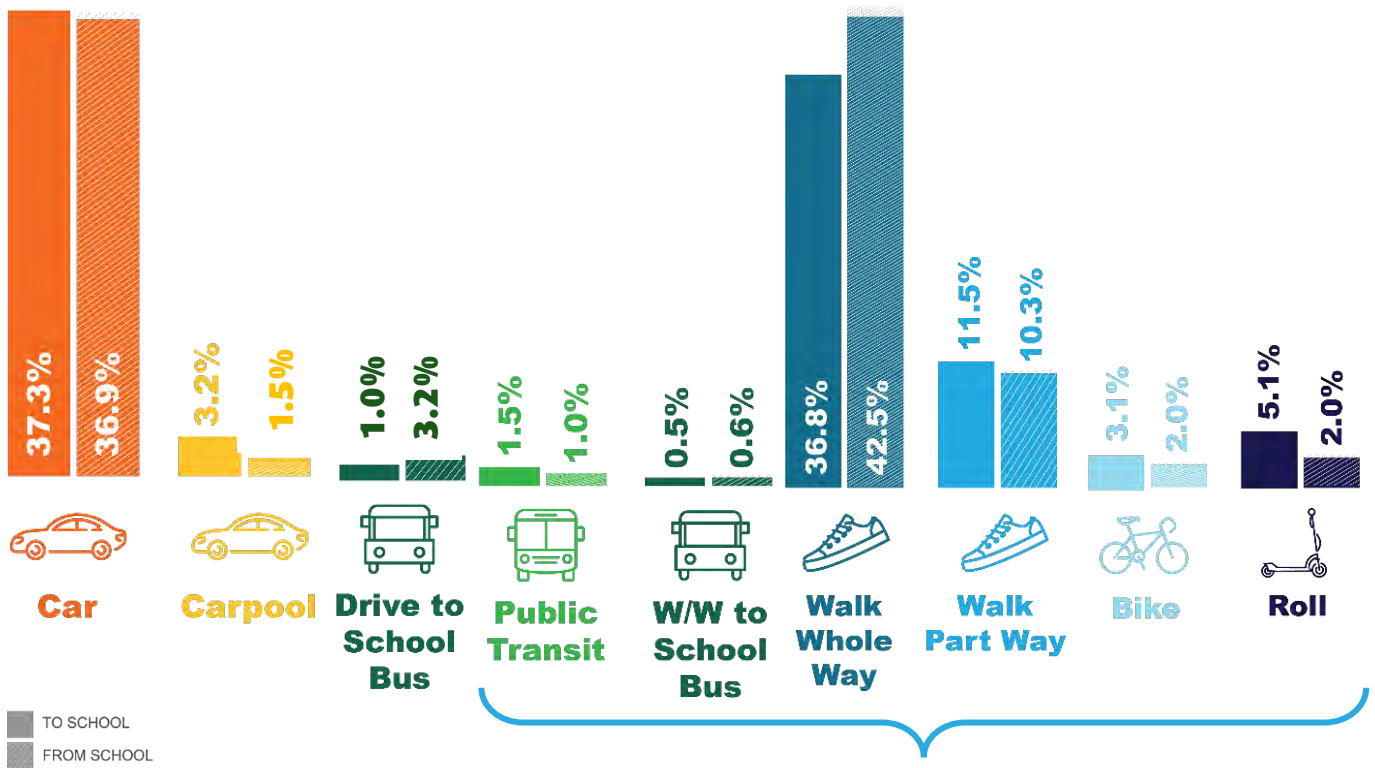
SCHOOL TRAVEL SNAPSHOT

Data was obtained from the on the 2020 Quadra Elementary Baseline School Travel Survey (online – parents and guardians) & *Hands-Up Survey (in-class – students).

How did you get to and from school this week?*

58% of students are using **active travel** to get to/from school or the bus stop

42% of families choose to travel by **car or carpool** to and from Quadra Elementary or the bus stop



Modes of Active Travel

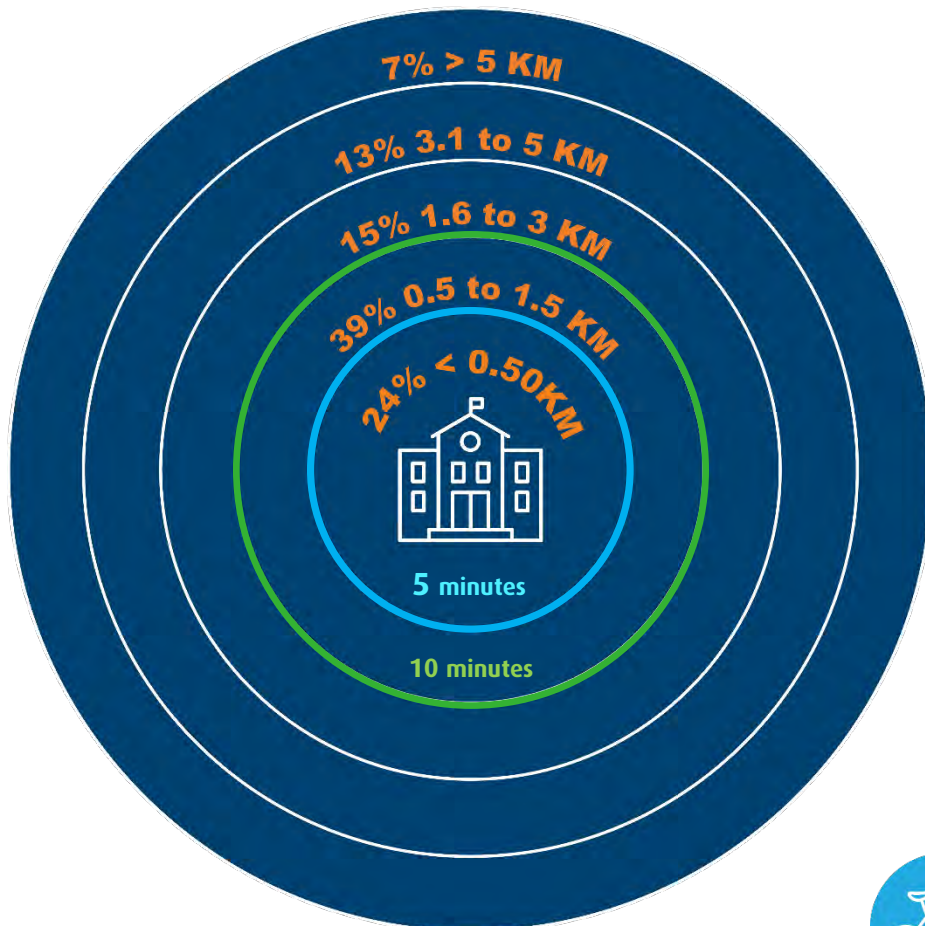


TIGHT FOR TIME? TAG ALONG!

Over **80%** of students using active travel to and from Quadra Elementary are accompanied by an adult.

Meet up with neighbours & try a "Walk & Wheel for 5" site!

How far do students live from Quadra Elementary?



63% of surveyed families live less than 1.5km from school, which is about a 10-15 minute bike or walk.

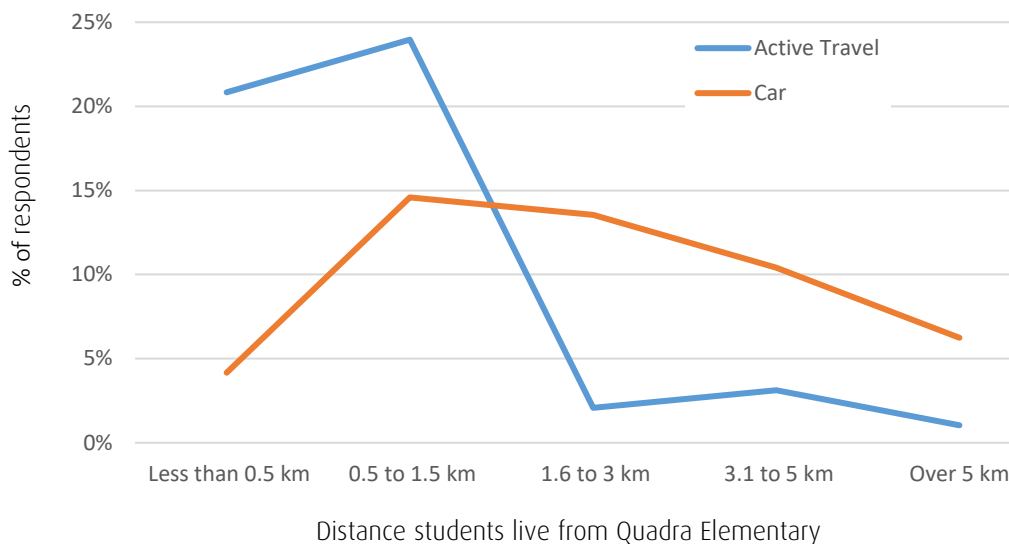
93% of students live within 5km of Quadra Elementary.

500m = 5 minute walk & wheel

CURB OUT CONGESTION!

1km = 10 minute walk & wheel

How does distance impact travel choices at Quadra Elementary?



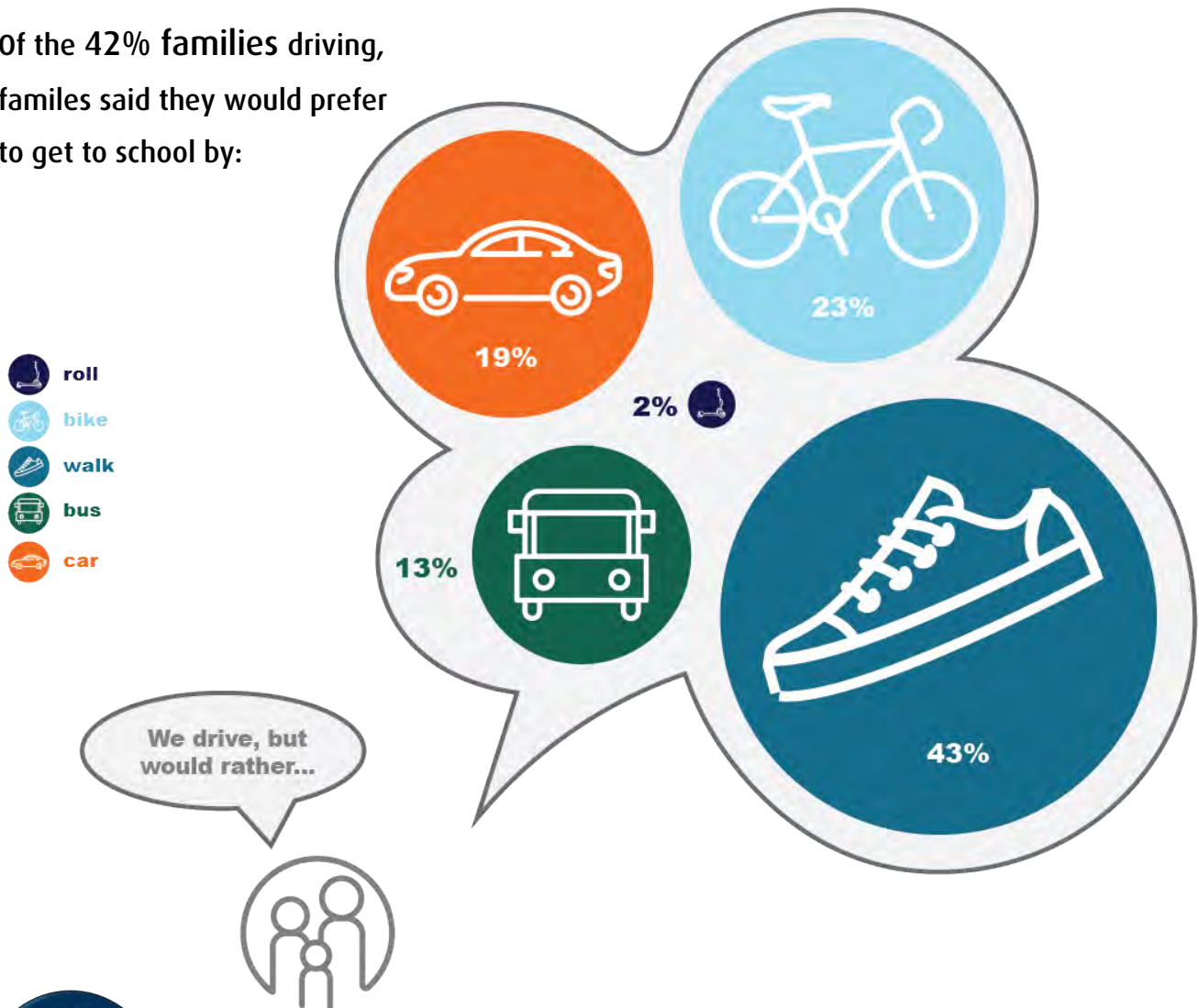
15% of families drive to and from school, but live within 1.5km of Quadra Elementary.

That's equal to about 40 vehicles!

How would you prefer your student get to Quadra Elementary?

Of all Quadra Elementary families surveyed, **91%** of families are currently using or would prefer their child switch to active travel to get to/from school, but currently **42%** usually drive.

Of the 42% families driving, families said they would prefer to get to school by:



HOW YOU CHOOSE TO MOVE MATTERS!

Every car off the road means more space for students to walk & wheel to school. If you can't choose active travel all the way, "Walk & Wheel for 5" to support your school's safety and to give your student the benefits of active travel!



ACTIVE SCHOOL TRAVEL INFRASTRUCTURE CHALLENGES

The following infrastructure challenges were identified through formal and informal consultation - listed in order of commonly raised, priority and proximity to school.

School Yard Entrances, Parking Lots/Loops & Facilities

- Busy with vehicles, poor perception of student safety
- 5th Street cut-through experiences bikes speeding through, high concern for student safety
- Desire for covered bike rack and scooter rack
- Visibility of pedestrians on sidewalks at front drop-off/pick-up loop

Quadra St

- Along extent – Vehicle volumes & speeds, bike lane safety/comfort, intersection/crossing safety, lack of sidewalk buffer, concerns of being hit by vehicle/near misses
- At Tolmie Ave – Vehicle speed, intersection timing for pedestrians
- At Cloverdale Ave – Additional crossing guard wanted at intersection
- In front of School – peak hour congestion, U-turns around the median
- At Finlayson St – Compliance of school zone through intersection
- At Tattersall Dr – Crossing guard wanted at intersection

Finlayson St

- Along extent (Tattersall to Hillside) – Vehicle speed, vehicle volume, bike lane connectivity/comfort – bike lane is blocked by parked commercial vehicles, intersection comfort/safety
- At Jackson St – Request for signalized crosswalk
- At Fifth St – Request for signalized crosswalk

Hillside Ave

- Along extent – speed and volume, no bike lane
- At Cook St – Turning vehicles, vehicle volume, vehicle speed, drivers running red lights, no crossing guard, narrow sidewalk
- At Graham – Vehicle volume, vehicle speed, drivers don't stop at crosswalk, narrow sidewalk, multiple lanes of traffic, crosswalk is difficult for people with mobility devices, strollers and children on bikes

Tolmie Ave

- Along extent (Blanshard to Quadra St) – Vehicle speed, vehicle volume, lack of crosswalk

Fifth St

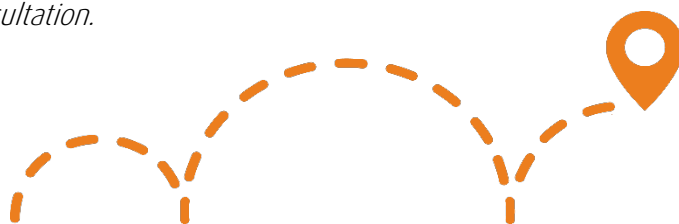
- Along extent – Vehicle volumes during drop off, poor sight lines caused by parked vehicles
- At Summit Ave – Request for crossing, drivers not stopping at stop signs, lack of visibility (fence, telephone poles, traffic congestion), vehicle speed, vehicle volume, no crossing guard

Other streets with concerns include:

- **Summit** – Vehicle speeds and volumes, rolling stops, no crosswalks
- **Cook** – Speed
- **Prior** - Along extent, vehicle speeds and volumes
- **Salsbury** - Lack of sidewalk, lack of crosswalk
- **Topaz** - Along extent, speed, rolling stop
- **Cloverdale** - Speed

ACTIVE SCHOOL TRAVEL OPPORTUNITIES

Opportunities through formal and informal consultation.



What we asked...

What we heard...

Together, we...

If/when you drive, what are the main reasons you drive to school?

- > traffic safety concerns
- > student is too young
- > distance is too far
- > time pressure

- > worked with the City of Victoria & SD61 to enhance road safety *
- > set up new "Walk & Wheel for 5" sites/routes **

What would make your route to school more comfortable?

- > connected routes
- > lower speeds & volumes
- > more crossing guards
- > school zone awareness

- > See "Action Plan *Highlights*" *

What would encourage you to walk or wheel to/from school?

- > route planning tips
- > pedestrian/cyclist safety & skills education
- > if child didn't go alone

- > K-3 ICBC "Think of Me" education
- > Grade 4/5 bike skills
- > New "Walk & Wheel for 5" sites/routes **

What motivates you to use Active Travel?

- > getting physical activity
- > spending time outside
- > environmental benefits
- > feeling connected

- > New "Walk & Wheel for 5" sites/routes **

**For more details, see Action Plan (Appendix B)*

***For more resources, see Plan Your Route Resources (Appendix A), Action Plan (Appendix B) & 6 E's of Active School Travel - Online Resources for School Communities (Appendix D)*

ACTION PLAN HIGHLIGHTS

One of the main deliverables of the RSR Initiative is the **Action Plan** (see Appendix B) which outlines possible solutions to higher priority active travel challenges and opportunities commonly raised during the consultation process. The suggested actions are subject to the respective jurisdictions for consideration, approval and required budgetary process.

The following sections key highlight active travel challenges raised and possible solutions presented in the Action Plan through the lens of the 6 E's principles.

In the following 'Action Plan -Highlights', actions marked with:

- Completed at the time of this final report
- May not have been committed OR are not yet completed
- Committed ongoing actions

ENGINEERING



Infrastructure upgrades to improve the comfort of walking and wheeling on streetscapes and built environments located within immediate school-neighbourhoods, on common/high-use routes, and on school property.

Active Travel Challenges Raised

Action Plan Key Messages and Solutions

Crosswalks and Improved Bike Infrastructure

“Crossing light crossing Quadra is not long enough for kids to get across safely.”

“High traffic volumes at the corner of Summit and Fifth. High speeds travelling down Summit (going westbound) towards 4-way stop at Summit and Fifth.”

“Many families have cargo bikes, long-tail or trailer bikes and it is difficult to access school at Fifth Street.”

City of Victoria

- Quadra/Finlayson crosswalks – extended walk times & make it a leading pedestrian interval
- Continue to support financial resources to have two crossing guards at Quadra/Finlayson
- Complete Jackson AAA bike way & pedestrian/bike activated crosswalk at Finlayson
- Curb let-downs, bulb-outs & crosswalks (parallel lines) at corner of Fifth/Summit for safer crossing and slowing traffic
- Curb let-down at Firth/Josette for kids and families cycling

City of Victoria & District of Saanich

- Installation of a crosswalk on Tolmie Ave making a community connection Glasgow St to Yew St

Traffic Controls in School Zone

“Traffic usually builds up because of the school pull in and/or because of right turning vehicles on Quadra to Finlayson (towards Cook). Also cars U-turning on Quadra around the median in front of the school.”

City of Victoria

- Install flexible bollards on Quadra in front of school to prevent vehicles turning into school, U-turns around traffic island, etc.

ENFORCEMENT



Crossing guards, school supervision and police working together to improve awareness and compliance of parking regulations, traffic laws, and personal safety with a focus on the immediate school-neighbourhood and on school property.

Active Travel Challenges Raised

Action Plan Key Messages and Solutions

Vehicles Speeding in School Zone and Behaviour of Parents/Guardians at Arrival/Dismissal Time

“Many speed through the school zone and go through lights”.

“Parents are in a rush and j-walk with their kids across Quadra.”

“VicPD did a number of School Zone enforcement days this school year and most of the speeders were Quadra parents!”

City of Victoria

- Enhance signage for School Zone by adding reflective strips to existing posts
- Continued VicPD enforcement

School Administration

- Crossing Guard Appreciation (annually February)
- ICBC’s “Think of Me” in-class lesson (May’21)
- ICBC’s “Think of Me” Enforcement/Outreach (Sept 2021)
- ICBC’s “Think of Me” annual programming
- Ongoing drop-off loop principal messaging and enforcement

Parking

Community complaints about double parking, turning around and blocking household driveways.

City of Victoria

- Installed “resident only” parking signs on Fifth St near school

School Administration

- Ongoing drop-off loop principal messaging and enforcement

EDUCATION



Change perceptions of active travel and support initiatives to improve safety, reduce conflicts between transportation modes, and build the confidence and skills needed to safely and confidently walk or wheel to and from school.

Active Travel Challenges Raised	Action Plan Key Messages and Solutions
<p>Lack of Road Safety and Bike Skills Classes</p> <p><i>“Not all students have bikes and some will have never had an opportunity to learn to ride.”</i></p>	<p>School Administration/RSR initiative (CRD)</p> <ul style="list-style-type: none"> ☑ Hosted Grade 4 and 5 bike skills with iRide ☑ Partner with ICBC & Police to deliver “Think of Me” Road Safety education campaign for students K-3 ➤ Consider delivering “Think of Me” annually (online or ICBC)
<p>Identifying Safer Routes to School and Promoting Alternative Parking Areas</p> <p><i>“I enjoy walking with my child to school – but I don’t always have the time. It would be nice to have a meet-up spot so kids could walk together.”</i></p>	<p>RSR initiative (CRD)</p> <ul style="list-style-type: none"> ☑ Develop: <ul style="list-style-type: none"> → Walk & Wheel for 5 sites: Jackson Park Fifth/Summit, Topaz Park → “Plan Your Route Map & Activity” (identifies active travel infrastructure) <p>School Administration & PAC</p> <ul style="list-style-type: none"> ➤ Promote new “Plan Your Route Map” (identifies active travel infrastructure along school routes) to teachers and parents ➤ Promote “Walk & Wheel for 5 sites”: Jackson Park, Fifth/Summit
<p>Need for Educational Resources for School Communities Post-Initiative</p> <p>Previous RSR schools have indicated their need for resources after the conclusion of the RSR initiative in order to build their capacity</p>	<p>RSR initiative (CRD)</p> <ul style="list-style-type: none"> ☑ Create the RSR “6 E’s Active School Travel Online Resources for School Communities”, includes the “Walk & Wheel for 5” Toolkit, Guide, Walking School Bus Guide, School Streets Guide, and Road Safety Tips for Principal Newsletters, etc.

ENCOURAGEMENT



Celebrate and promote walking and wheeling as easy, fun and inclusive ways to travel in our community, alone or with friends and family.

Active Travel Challenges Raised

End of trip facilities and route details

“Students might ride more if there was a better place to park their bike when it’s raining.”

“Do kids learn about road behaviour and street safety here? It would be reassuring to know that students are learning the basics. The school has a lot of commuting traffic come through, so encouragement/lessons for young ones would be great.”

Action Plan Key Messages and Solutions

RSR initiative (CRD)

- Purchase and installed new scooter rack 2021
- Hosted iRide for grade 4/5, ensured that assisted bikes were provided and that students at all bike skill levels were included
- Worked with ICBC to host ICBC’s “Think of Me” program (May & Sept’21)

City of Victoria

- Installed new covered bike rack

SD61/School Admin/PAC

- Take part in community celebrations and campaigns that promote active transportation
- Continue to host school events that encourage healthy and active lifestyles
- Promote new Ready Step Roll resources:
 - “Walk & Wheel for 5” sites
 - Plan Your Route Map & Activity
 - 6 E’s Active School Travel Online Resources for School Communities



EQUITY

Ensure that the initiative is benefiting all demographic groups, with attention to ensuring safe, healthy, and fair outcomes for all students of diverse family, cultural, socio-economic backgrounds, abilities and identities.

Active Travel Challenges Raised	Action Plan Key Messages and Solutions
<p style="text-align: center;">Sharing the Road</p> <p style="text-align: center;"><i>“There are parking and traffic concerns with the residents of Firth St. and Summit.”</i></p>	<p>City of Victoria, School Administration, PAC and RSR initiative (CRD)</p> <ul style="list-style-type: none"> ➤ Promote respectful parking and driving behaviour at arrival and dismissal times ➤ Promote RSR “Plan Your Route” map and “Walk and Wheel for 5” sites to encourage more families to choose active travel fully or part-way to school
<p style="text-align: center;">Identifying and promoting safer routes to school and alternatives to drop-off/pick up at the school</p> <p style="text-align: center;"><i>“My work times don’t allow me to walk my child to school.”</i></p>	<p>RSR initiative (CRD)</p> <ul style="list-style-type: none"> <input checked="" type="checkbox"/> Develop: <ul style="list-style-type: none"> → “Walk & Wheel for 5” at various sites → “Plan Your Route Map” (identifies active travel infrastructure along school routes) <p>School Administration & PAC</p> <ul style="list-style-type: none"> ➤ Promote new resources to families to help them identify safe active travel infrastructure along Quadra Elementary routes ➤ Promote “Walk & Wheel for 5” sites

NEW ACTIVE TRAVEL INITIATIVES AT QUADRA ELEMENTARY

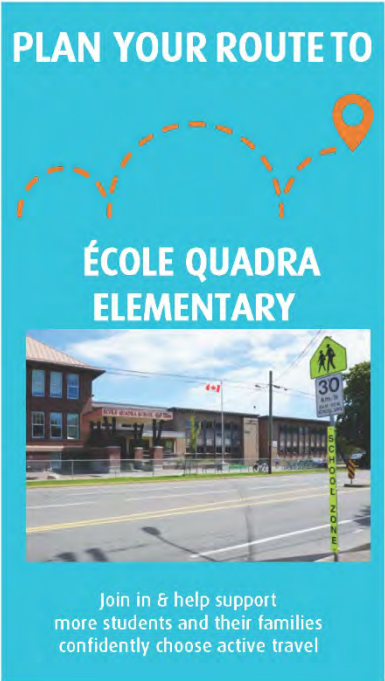
In order to continue to support active travel to and from school, parents/guardians and school administration need to support each other, work together, and practice!

Plan Your Route to Quadra Elementary

As identified on the Plan Your Route to School Map, Quadra Elementary has adopted the following ongoing encouragement initiatives to support active travel. These school-specific resources are bundled in Appendix A. For more ideas see [6 E's of Active Travel – Online Resources for School Communities](#).

Walk & Wheel for 5

These unsupervised sites and routes are about a five minute (500 meters) walk from the school and may be used as alternative meeting sites for families that drive*, walk, wheel, bike or take public transit. The goals of “Walk & Wheel for 5” include easing vehicle congestion at the school, saving time, building student



confidence and enabling more families to benefit from using active travel to get to/from school. These sites have been selected as they are on common routes that encourage the use of pedestrian and cycling infrastructure (sidewalks, quiet streets, pedestrian activated crosswalks, multi-use trails, etc.).



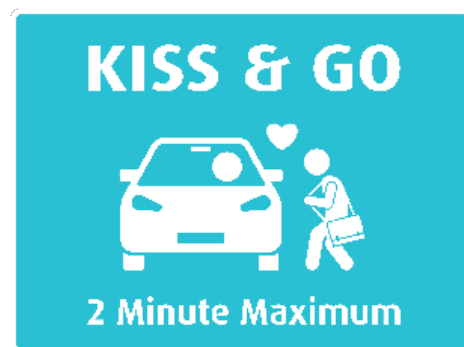
How to use these sites

On your school’s Plan Your Route to School” map and brochure these sites and routes are identified. Whether you drive*, walk or wheel, use these sites to ‘Meet-Up & Go’, “Park & Stroll” or simply “Kiss & Go” on your way to school, work or back home. Arranging to meet with a friend – or just knowing that others will be walking and wheeling along this route – increases everyone’s comfort and enables more families to be able to choose to use active travel fully or part-way to/from school.

*Not all sites are suitable for drop-off/pick-up with a vehicle, see your school’s “Plan Your Route Map” & brochure for details.

Kiss & Go!

These sites are located in the school drop-off loop, parking lot and/or along nearby streets where parking is limited or not permitted. The intent of Kiss & Go is to reduce congestion. This creates safer spaces for those students taking active travel, ensuring those families that have mobility or student needs have access to drop-off/pick-up parking, as well as reducing congestion for everyone!



Crossing Guard & Bus Driver Appreciation



Quadra students and staff participated in the first annual Crossing Guard Appreciation event hosted by the CRD, ICBC and the school. Every day, no matter the weather, dedicated crossing guards help students and their families get to and from school safely. To express gratitude, crossing guards were gifted an ICBC travel mug and classes created hand-made thank you cards to say thanks for all they do.

Grade 4/5 Bike Skills

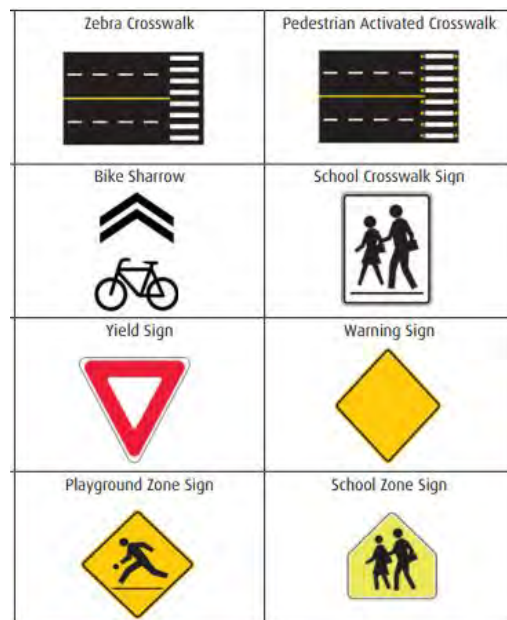
To encourage and enable more students to be able to walk & wheel to school, Ready Step Roll secured bike skills through the iRide program. There is an ongoing provincial initiative called Everybody Rides Grade 4-5 program available for students at Quadra Elementary in future years. Cycling education for students helps raise a generation of sustainable transportation and safe road users.



When everybody rides, everybody wins!

ICBC – Think of Me

In the fall of 2021, Quadra students will participate in the “Think of Me” program in partnership with ICBC and VicPD. This program aims to have police enforce traffic issues near the school using messages drawn on “warning tickets” created by students to raise awareness around road safety. The program is focused on students in grades K-3. Classes will also be encouraged to go outside around the school neighbourhood to identify infrastructure, street signs, alternative routes and hazards.



GoByBike Week and the CRD Walk & Wheel to School Week

Formerly known as Bike to Work (or school) Week, GoByBike has evolved to be more inclusive to individuals and the various trip destinations throughout Greater Victoria. Schools are able to create a team online, track rides and win prizes by participating in this annual spring event. The CRD Walk & Wheel to School Week was run independently through schools due to COVID-19. Schools had the option to participate by tracking trips on a school poster and offering small encouragement prizes.



Capital Bike is the local GoByBike chapter for Greater Victoria. In addition to facilitating the annual GoByBike events, the team at Capital Bike has also built the new All Aboard Family Cycling Program. This program includes online family cycling resources focusing on three topics: Cycling While Pregnant, Cycling With Kids (On Your Bike) and Cycling With Kids (On Their Bikes). They also offer free skills workshops and family rides where instructors teach best practices, bike maneuvering skills and tips, ending with a fun all ages and abilities group ride to a fun destination.

PLAN YOUR ROUTE TO QUADRA ELEMENTARY

“Plan Your Route to Quadra Elementary” Map was created to show the pedestrian and cyclist infrastructure that provides for safer active travel in Quadra Elementary neighbourhood, as well as the “Walk & Wheel for 5” sites and routes, and “Kiss & Go” sites.

Try planning & practicing your family’s active route to school!

Appendix A: Plan Your Route to School Resources

- ✓ Brochure with map - Quadra Elementary
- ✓ Route Planning Activity for Families

Families who **plan**, **prepare**, and **practice** walking and wheeling to school help support children of all ages and abilities to learn safe and smart street-skills while gaining confidence, independence, and daily physical activity. Children will discover how easy, fun and sustainable any trip can be when you plan, prepare and practice using active travel.

Plan

- ✓ Plan the route to school with your child (see “Plan Your Route” map/brochure)
- ✓ Identify landmarks, road names, crosswalks to use, as well as potential hazards
- ✓ Help your child dress for the weather and visibility in the dark
- ✓ Ensure all equipment is safe and suitable for your child
- ✓ Try a “Walk and Wheel for 5” site and route (see “Plan Your Route” map/brochure)

Prepare

- ✓ Set a good example when walking/wheeling and driving
- ✓ Practice walking/wheeling with your child on weekends - [CRD Bike Map](#)
- ✓ Teach Pedestrian Skills and rules of the road using [ICBC educational materials](#)
- ✓ Teach road rules using the “[Bike Sense – Edition 7](#)”
- ✓ Encourage independence – allow your child to help make decisions along the way

Practice

- ✓ Quiz your child on road rules and street signs
- ✓ Keep things fun with [CRD’s Active Travel Resources for School Communities](#)
- ✓ Practice your route, invite friends to join you in walking/wheeling
- ✓ Explore new trails, parks, and activities that encourage active travel

TIPS FOR FAMILIES

- ✓ Teach children to use crosswalks, sidewalks & crossing guards when possible. If there are no sidewalks, walk on the opposite side of the street to watch for oncoming traffic.
- ✓ Build up confidence by practicing your skills together as a family on the weekend.
- ✓ Encourage kids to try new ways to travel (walk, bike, scooter etc.) to keep things fun!
- ✓ Invite neighbours & friends to join you along the way or meet up & go together part-way!
- ✓ Usually drive door-to-door? Try a 'Walk & Wheel for 5' site to reduce school traffic congestion & other benefits of active travel.



Walk & Wheel for 5 sites/routes

Walk, Bike, Bus or Roll to Topaz Park, Jackson St Park, or to the bottom of the Fifth St Cul de Sac



Kiss & Go - 2 minute stop only at arrival/dismissal



Pedestrian Activated Crosswalk



Marked Crosswalk



Crossing Guard - 15 mins before & after school



Major Intersection with Signalized Crosswalk



Public Bus Stop closest to Sooke Elementary



Bicycle Rack



School Access Point



Sidewalk



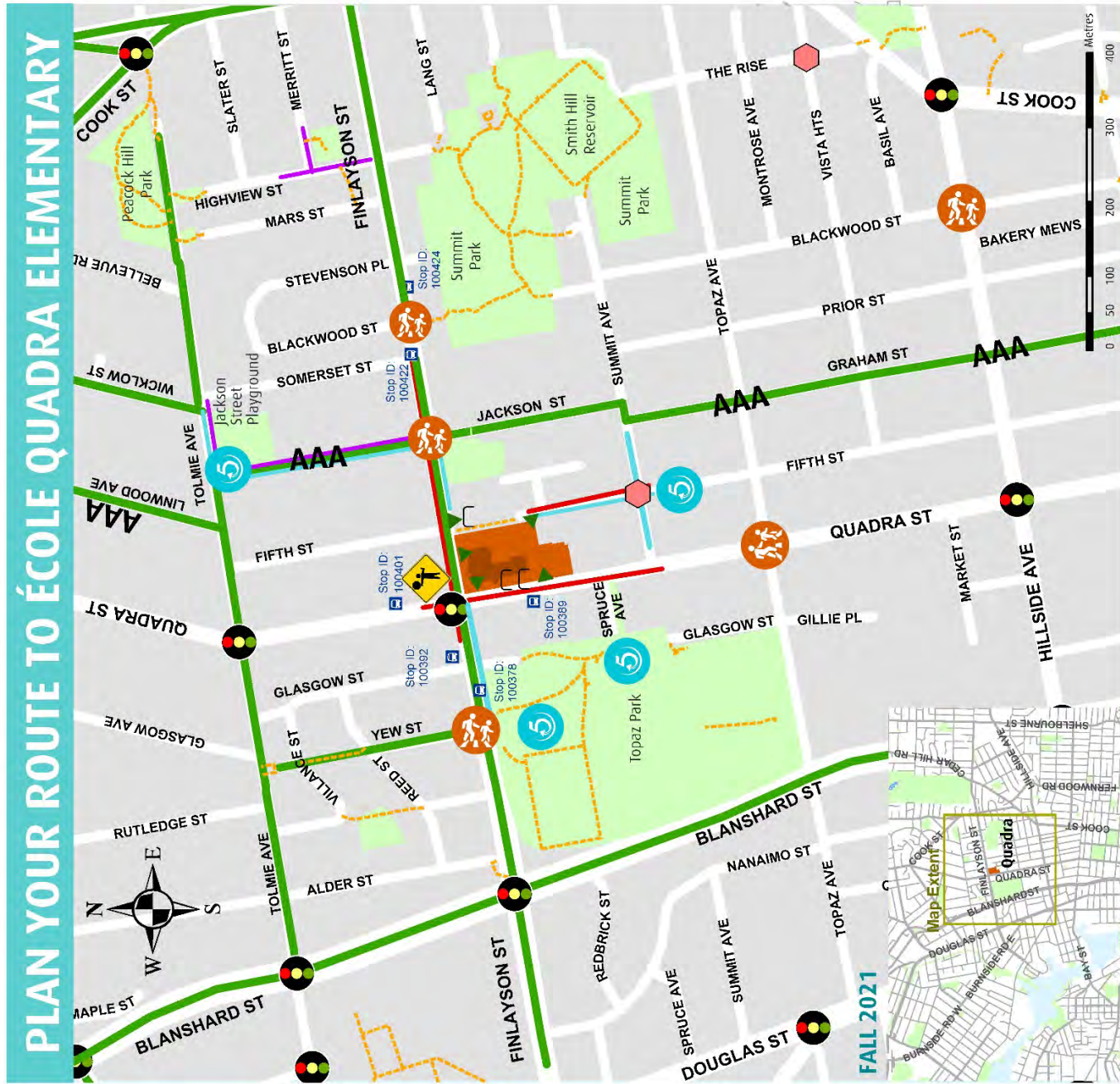
Bike Route (AAA = All Ages & Abilities Network)



Multi Use Trail Connections



School Zone - 30km/h 8am-5pm



Important: The Capital Regional District (CRD) does not warrant or represent that the information herein is free from errors or omissions, nor does it warrant the safety or suitability of any 500 metres is about a 5 minute walk route, trail, road or pathway depicted or otherwise described herein. This information is provided for general information purposes on the condition that the (CRD) will not be liable for any loss, damage, costs, or expense whatsoever incurred by any person or entity using or otherwise relying upon it. The use of this document by any person or entity is entirely at their sole risk.

KEEP ROLLING WITH 'NEXT STEPS'

By design, the RSR initiative's focus on the 6 E approach, aims to build capacity within partners to fulfill the action plan items and further enable and inspire active travel mode choice. Recognizing that many of the school partners (administration, teachers, PAC, parents and students) move on to new schools, 'Next Steps' aim to facilitate the hand-off to the new school community over time so they can continue to foster Quadra Elementary's active travel culture, using the 6 E's.

Keep Rolling with Next Steps:

Shifting Gears...

As the RSR initiative with your school concluded in Summer 2021. Paper and [digital](#) copies of the final report and resources will be provided to the school and local government, including a large poster size map for the school to display. CRD staff are available to present the final report to the new PAC in Fall 2021.

Taking the Next Steps...

The school and the local government should continue to implement of **Action Plan** (Appendix B). Suggested actions to be completed or considered by the various partners identified. Each new school year the School Administration and PAC should review the "Kiss & Go" sites and "Walk and Wheel for 5" sites and routes to ensure they are meeting the needs of the school families in a changing urban environment. **Promote the "Plan Your Route to Quadra Elementary" brochure and activity - update as needed.**

Gaining Momentum...

We are always updating the [6 E's of Active School Travel - Online Resources for School Communities](#) activities, resources and key messages to continue to foster an active travel culture Try a "Walk and Wheel for 5" site and route. Identify members of the PAC that can lead active travel initiatives!



PARTNER KEY CONTACTS & LINKS TO RESOURCES

- City of Victoria Engineering eng@victoria.ca - 250.361.0300
- CRD RSR regionalplanning@crd.bc.ca - 250.360.3195
- [City of Victoria Transportation](#) & [CRD Pedestrian and Cyclist Master Plan](#)
- [CRD Bike Map](#)
- [GoByBike-Greater Victoria](#) (GoByBike Week, bike skills) and [iRide](#) (bike skills)

APPENDICES

Appendix A – Quadra Elementary – Plan Your Route to School Map and Activity

Appendix B – Quadra Elementary – Action Plan

Appendix C – Quadra Elementary Consultation Data and School Newsletters

Appendix D – 6 E's of Active School Travel - Online Resources for School Communities



Appendix A: Plan Your Route Map & Activity Quadra Elementary



Quadra Elementary

August 2021

⑤ Minute Walk & Wheel to School
UNSUPERVISED STUDENT DROP-OFF & PICK-UP SITE

KISS & GO • PARK & STROLL • MEET UP & GO

What is 'Walk & Wheel for 5' ?

Walk & Wheel for 5 is designed to support student safety by easing vehicle congestion at the school during arrival & dismissal times, while saving you time, building student confidence & enabling more families to be active.

These unsupervised sites are five minutes (500 meters) from the school & may be used as **alternative drop-off & pick-up sites for households that drive, walk, wheel, bike or take public transit together.**

Use these sites to **Meet-Up & Go, Park & Stroll or simply Kiss & Go** on your way to school.

Supporting safety in numbers on common routes to school ultimately creates safer active travel conditions for everyone.

Your choice makes a difference



When you choose not to drive door-to-door you help reduce road congestion and support safety in numbers.



Reducing vehicle traffic during arrival & dismissal times makes school parking lots & streets safer for everyone.

Benefits of Active Travel

- Create safer school streets
- Spend time together outside
- Build confidence & capacity

"I love the Walking School Bus, because now my Mom gets to work ON time!"
- Grade 3 Student Rogers Elementary

"It's really tough to walk/wheel when both parents have full time jobs...
...If there was a walking or cycling group I would allow our kids to join it."
-Keating Elementary Parents

Questions?

Contact the PAC, Principal or CRD Regional and Strategic Planning
regionalplanning@crd.bc.ca



PLAN YOUR ROUTE TO

ÉCOLE QUADRA ELEMENTARY

Join in & help support more students and their families confidently choose active travel

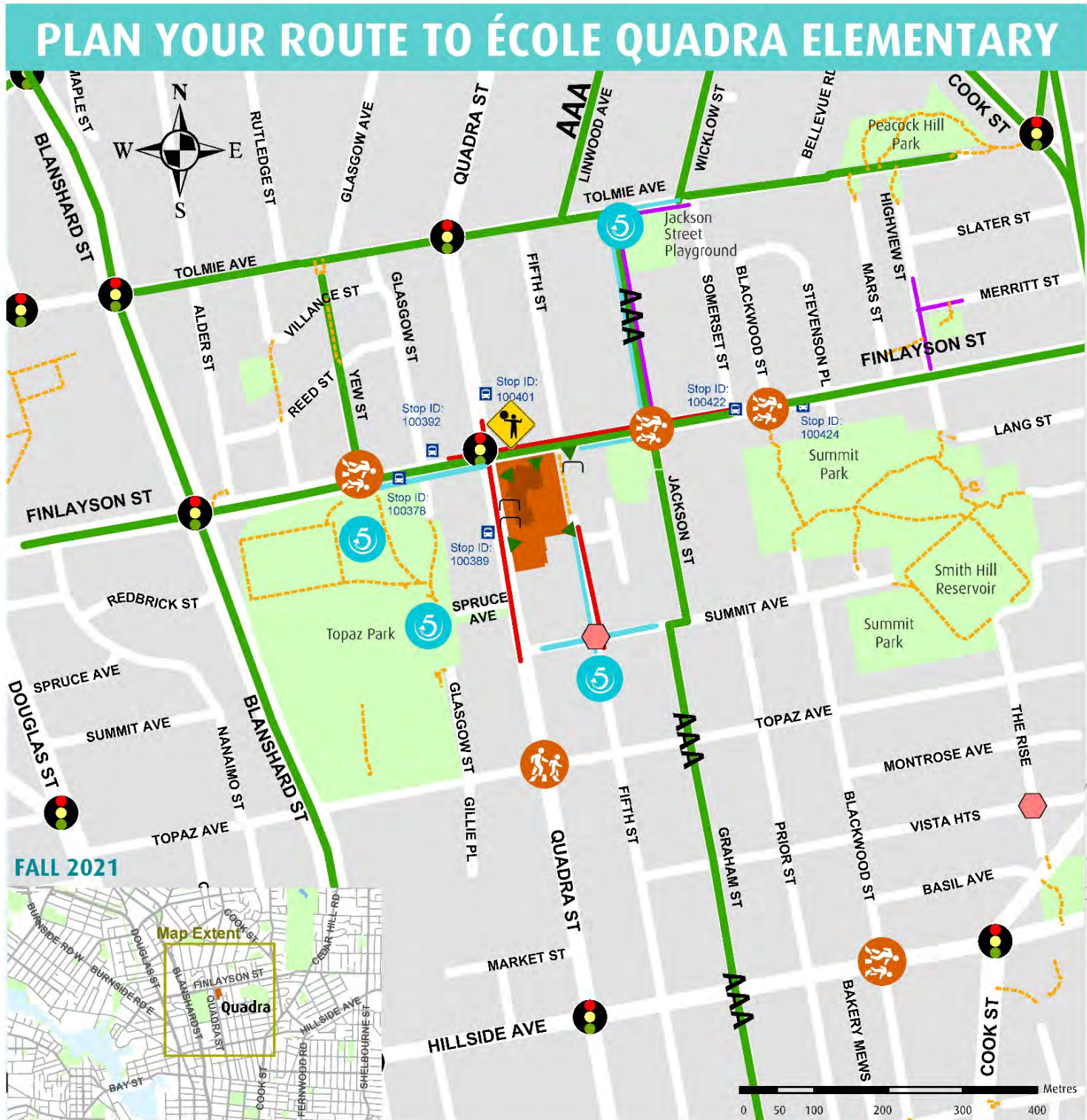
PROUDLY SUPPORTED BY:



TIPS FOR FAMILIES

- ✓ Teach children to use crosswalks, sidewalks & crossing guards when possible. If there are no sidewalks, walk on the opposite side of the street to watch for oncoming traffic.
- ✓ Build up confidence by practicing your skills together as a family on the weekend.
- ✓ Encourage kids to try new ways to travel (walk, bike, scooter etc.) to keep things fun!
- ✓ Invite neighbours & friends to join you along the way or meet up & go together part-way!
- ✓ Usually drive door-to-door? Try a 'Walk & Wheel for 5' site to reduce school traffic congestion & other benefits of active travel.

- Walk & Wheel for 5 sites/routes**
Walk, Bike, Bus or Roll to Topaz Park, Jackson St Park, or to the bottom of the Fifth St Cul de Sac
- Kiss & Go-- 2 minute stop only at arrival/dismissal**
- Pedestrian Activated Crosswalk**
- Marked Crosswalk**
- Crossing Guard - 15 mins before & after school**
- Major Intersection with Signalized Crosswalk**
- Public Bus Stop closest to Sooke Elementary**
- Bicycle Rack**
- School Access Point**
- Sidewalk**
- Bike Route (AAA = All Ages & Abilities Network)**
- Multi Use Trail Connections**
- School Zone - 30km/h 8am-5pm**
-



500 metres is about a 5 minute walk

PLAN YOUR ROUTE TO SCHOOL ACTIVITY

Families who **plan, prepare, and practice** walking and wheeling to school will help support children of all ages and abilities to learn safe and smart street-skills while gaining confidence, independence, and daily physical activity. On top of this, children will learn how easy, fun and sustainable using active travel for any trip can be when you plan, prepare and practice.

This activity aims to help families plan their route to their school by mapping out pedestrian and cyclist infrastructure, to show safe routes for walking and wheeling.

1. On a sheet of paper, record each family member’s morning & afternoon commute. Be sure to consider any additional stops along the way to their final destination.

Most mornings, _____ travels _____ by: _____
(family member name) (alone/with others to destination:) (mode of transportation)

Most afternoons, _____ travels _____ by: _____
(family member name) (alone/with others to destination:) (mode of transportation)

Most days, _____ would prefer to travel _____ by: _____
(family member name) (alone/with others to destination:) (mode of transportation)

2. Set family goals! Be sure to consider the age, ability, and independence of each child.

(Ideas: “Our child will be dropped off 5 minutes away from school so they can walk part way”, “We will practice biking as a family to school on weekends, so our child can bike alone”, “I will start a walking school bus so other kids don’t have to walk alone”)

1. _____

2. _____

3. _____

I would like to accomplish:

_____ by _____
(write your personal goal here) (date)

TRAVEL TIP: SKIP THE LINE!

‘Kiss and Go’ or ‘Park and Stroll’ at any of the “Walk & Wheel for 5 ” sites available at your school to avoid long lines and idling in the drop off loop line up.

3. Consider and make note of potential barriers in each family member’s goal.

i.e. Barrier “Timing – we can’t bike to school together in the morning, because I will arrive late.

Strategy Use school’s early supervision to allow our family to drop Sam off early, and then bike to work.

Barriers	Strategies for success

4. Use Google Maps to determine the most direct route to school for your family. Explore different routes and travel time estimates for your preferred travel mode.

Route option 1: _____

Route option 2: _____

5. Plan your family’s route! Use the attached map to compare suggested Google routes to your school’s local infrastructure. With your child, identify safe crossings, caution points, and landmarks to help prepare them to walk and wheel to school.

What walk and wheel infrastructure can you use on the way? (check all that apply)

- Sidewalk
- Marked Crosswalk
- Signalized Crosswalk

- Pedestrian Overpass
- Crossing Guard
- Bike Lane

- Walking School Bus
- Drive to 5 Parking Area
- Pedestrian/Cyclist Trail

To travel my route, I will use:

(circle the modes you will use)



It will take about _____ minutes to travel _____.

(time in minutes) (distance; m or km)

Plan, Prepare, Practice!

Appendix B:

Action Plan – Quadra Elementary



Quadra Elementary

August 2021

READY STEP ROLL
ACTIVE SCHOOL TRAVEL PLANNING

Location	Issues Raised	Proposed Actions	E's	Key Players & Jurisdiction	Timeline
School Site Access and School Zone					
Quadra Elementary School Zone (Quadra St. Finlayson St. Fifth St N of Summit Ave)	Poor school zone awareness/compliance from motorists	Install reflective SCHOOL ZONE panel to existing school zone signs to improve visibility of school zone limits	Engineering	CoV	Completed
		Expand school zones on Jackson (east) and Quadra (south) by relocating 30km/hr School Zone signs.	Engineering	CoV	Completed
		Participate in ICBC's Think of Me campaign	Encouragement Education Enforcement	School/PAC/ICBC CRD-RSR ICBC/VicPD	Spring'21 (in class) Fall'21 (VicPD)
	Parents parking on North side of Quadra and Jay-walking across Quadra to school.	Principal and PAC promoting to parents to use Crossing Guards. Work with VicPD to encourage Quadra families to use marked pedestrian crossings to cross Quadra Street, and to enforce vehicle speeds within 30km/hr posted zone	Education Enforcement	School PAC VicPD	Ongoing
	Speed & Volume between Cloverdale & Quadra Elementary - hilly topography and inconsistent speed limits between municipalities	Saanich & Victoria - consider coordinating speed & enforcement	Enforcement	VicPD Saanich PD	Ongoing
Quadra / Finlayson Intersection	Lack of advance left turn signal from WB Finlayson to SB Quadra is a concern. Turn lanes already pushed back to accommodate larger vehicle turning radii.	City of Victoria to review feasibility of integrating advance left turn into signal -TBD	Engineering	CoV	Medium
	During peak hours, congestion causes drivers to rush through intersection during signal change (to yellow). Cyclists and pedestrians do not feel safe.	1. Consider installation of bike box to create space for cyclists. 2. Lengthen pedestrian crossing signal to 1.0m/sec to allow for longer crossing at intersection 3. Review intersection and consider "No Right Hand Turns on Red" signage <i>Reviewed by CoV Engineering (2020), not supportable at this time.</i> 4. Retime intersection to include greater Leading Pedestrian Interval	Engineering	CoV	1. Medium 2. Short 3. Completed 4.Short
	Busy intersection with multiple turning movements during peak hours	Maintain funding for two crossing guards currently assigned to this location. Encourage use of crossing guards through Principal Reminders, Think of Me, Crossing Guard Appreciation	Encouragement	School/PAC CRD-RSR	Ongoing
		Consider installation of strategically placed flexible bollards to delineate space from turning vehicles for cyclists at intersection through the City's Active Travel Program.	Encouragement Engineering	CoV	Medium
	Request for Scramble Crosswalk at this intersection	Reviewed by CoV Engineering (2020), not supportable at this time.	N/A	N/A	Completed
Fifth St / Summit Ave. Intersection	Lack of marked pedestrian crossings at intersections	Review Fifth/Summit for improved intersection accessibility and safety, including: temporary traffic calming curbs (short-term), parallel crosswalk bars (short-term), new curb bulges and ramps (medium-term), and 'Walk and Wheel for 5" signage	Engineering Equity Encouragement	1. CoV 2. CoV 3 CoV & RSR	Short/Medium term
	Perception of vehicle speeds and volumes during peak hours	CoV to assess Fifth Street dead-end to determine suitability of traffic calming measures via data collection. <i>Data collection (2021) indicates low traffic speeds and volumes, traffic calming not prioritized at this time.</i>	Engineering	CoV	Complete
Finlayson Ave	Lack of marked or pedestrian activated crossings across Finlayson - many families jaywalk between Quadra/Jackson Ave	CoV Jackson/Graham AAA Bike Lane includes Rapid Flashing Beacon Crossings at Finlayson/Jackson St. Work with school to promote Drive to 5, Walking School Bus &/or Bike Train site at Jackson Park when crosswalk is open.	Engineering Education & Encouragement	CoV CRD-RSR/School/PAC	Completed Spring'21 & ongoing
	Community wants to keep access left hand turn access onto Jackson	<i>*Original CoV designs included diverters to prevent left hand turns, which were subsequently removed from design due to community preferences</i> 1. Develop Plan Your Route Map to inform Quadra families (see Appx A) 2. Develop and promote Walk & Wheel for 5 brochure to inform Quadra families of alternative drop off and pick up points (Appx A)	Encouragement Education	1. CRD-RSR 2. CRD-RSR/School/PAC	Spring & ongoing
	The bike lane on Finlayson across from the school is frequently blocked by commercial vehicles	Consider strategic placement of bollards to create barrier for bike lane.	Engineering	CoV	Short

Timelines

Short-term: estimated completion 2021
 Medium-term: estimated completion 2022-2024
 Long term: estimated completion 4+ years

Location	Issues Raised	Proposed Actions	E's	Key Players & Jurisdiction	Timeline
Quadra St Drop Off Loop Access	Poor access to parking facilities for active travel	Use grant fund from CoV to create permanent bike shelter	Engineering	CoV/School District School/PAC	Completed
		Install scooter rack to support active transportation to Quadra	Engineering	CRD -RSR SD61	Completed
	Street parking south of Quadra drop-off loop entrance affects pedestrian visibility for vehicles turning into drop off loop.	Remove on-street parking spaces to prohibit parking/stopping adjacent to the drop-off loop. Paint curb yellow.	Engineering	CoV	Completed
	Pedestrian safety at front drop-off loop entrance & exit ; Left turn into and out of school drop off loop causes congestion on Quadra St, vehicles enter bike lane to pass.	1. Consider installing signage to make right hand turn only out of drop off loop, to support safety of pedestrians and cyclists using sidewalk. Signs can both be installed by the school on school property at exit and by the City on ROW. 2. Install flexible bollards on Quadra (centre line) to prevent southbound left turns into drop off loop	Engineering	School District & CoV	1. Short 2. Short
	Drivers turning right out of drop off loop perform illegal u turns at Quadra/Finlayson traffic island after	Install flexible bollard to prevent U-turns on Quadra St	Engineering	CoV	Short
	Request from parents : Consider drop-off zone on Quadra St for south bound traffic with additional pedestrian crosswalk & crossing guards. Consider use of median or a crosswalk across Quadra at Summit.	1. City assessed site for crosswalk, added to list for future consideration 2. Promote use of Walk & Wheel for 5 Parking locations Encourage use of crosswalks and crossing guards across Quadra. Educate and encourage families to use existing crosswalk with crossing guards at Quadra/Finlayson intersection (200m away)	Engineering Education & Encouragement	CoV RSR with school & PAC	1. CoV to review in future (long-term) 2. Spring'21 & ongoing
Fifth St & Cul-de-Sac	Highly used drop off site; vehicles often park in cul-de-sac and cause congestion and visibility issues on Fifth St.	On Fifth (between cul-de-sac and Summit) consider installing signage with timed stopping restrictions during peak hours or designate Resident Parking Only	Engineering & Enforcement	CoV	Completed
		1. Develop Plan Your Route Map to inform Quadra families of other parking/stopping options alternative drop off sites 2. CRD , school and CoV work to sign 'kiss & go' with sandwich board and signage on existing no parking signs poles. 3. Consider applying for the City of Victoria's My Great Neighbourhood Grant Program for funding to paint school-led decorative road mural to improve motorist yielding compliance and awareness of school area	Education. Encouragement Engineering Encouragement	1CRD-RSR School/PAC CoV	Spring'21 for future consideration
	Negative perception of vehicles speeds during peak hours, trucks reported to be accessing Fifth St looking	Consider installation of "No Exit" sign to help inform unfamiliar drivers of cul-de-sac	Engineering	CoV	Short
		Coordinate parking review and speed study analysis to support traffic safety	Engineering	CoV	Completed
Lack of ramp access to the school for wheelchairs, strollers and cargo bikes	1. Consider installation of curb letdown where suitable to improve accessibility of Quadra school grounds for wheelchair, stroller and cargo bike access (suggested location: onto sidewalk at Josette St) 2. Consider installation of signage to encourage Cyclists to Slow Down, Children at Play at both ends of Fifth Street pathway. Strategically place wayfinding for Jackson St. bikeway to direct bike traffic towards bikeway and away from Fifth Street pathway. 3. CoV and School Administration to evaluate if City's signage is working or if the school would like to re-evaluate and replace " Cyclists to Slow Down, Children at Play " signage with their own signage asking cyclist to dismount through the Fifth St. Cut-Through.	Engineering	1.CoV 2. CoV 3. CoV & School Admin	1. Medium 2. Short 3. Medium	
Quadra Elementary Catchment Area					
Quadra St. (north of Finlayson)	Lack of connected bike lane along Quadra connecting Saanich to Victoria from Tattersall to Finlayson	Install wayfinding Signage at key intersection locations to direct users to the new Jackson/Graham AAA bike route	Engineering	CoV	Short
	Walk time for Quadra/Tolmie intersection too fast (CoV jurisdiction)	Review Tolmie intersection for retiming signal with a Leading Pedestrian Interval	Engineering	CoV	Medium
	Major intersections - inconsistent pedestrian crossings between Saanich & Victoria - Covid & walk times	Consider coordinating intersection patterns between municipalities for improved consistency for pedestrians/cyclists	Evaluation	CoV/Saanich	Ongoing
	Crosswalk at Quadra/Topaz - high volume of pedestrians crossing at peak times	Upgrade crosswalk, part of City's 2022/2023 crosswalk program	Engineering	CoV	Short
Summit Ave	Perception of vehicle speeds and volumes during peak Poor stopping compliance from drivers	CoV to assess and collect data to determine suitability of traffic calming measures.	Engineering	CoV	Short

Timelines

Short-term: estimated completion 2021
 Medium-term: estimated completion 2022-2024
 Long term: estimated completion 4+ years

Location	Issues Raised	Proposed Actions	E's	Key Players & Jurisdiction	Timeline
Tolmie Ave	Speed & Volume of motor vehicles	Speed humps adjacent to Jackson St. Park. Speed humps installed on Jackson/Tolmie as part of AAA / traffic calming program	Engineering	CoV	Complete
	Lack of marked crosswalk at Tolmie/Lynwood - many French immersion students cross catchment at Tolmie	Added to City of Victoria's crosswalk registry for review	Engineering	CoV/Saanich	Complete
Tolmie Ave (between Blanshard & Quadra)	Speed & Volume of motor vehicles	COV to evaluate speed & volume to consider traffic calming	Engineering	CoV/Saanich	Short
	Lack of marked pedestrian crossings at Tolmie/Glasgow- many French immersion students cross catchment at Tolmie	Installing southside curb bulge and pedestrian improvements on Tolmie St at Glasgow and Yew, to better facilitate pedestrian movements.	Engineering	CoV	Short
Finlayson Ave (near Douglas)	The bike lane on Finlayson adjacent to car dealerships is frequently blocked in front of the car dealership by their transport trucks	Enforcement to not block bike lane	Enforcement	VicPD	ongoing
Cook St / Cloverdale / Quadra intersection	Poor perception of intersection safety for pedestrians/cyclists cars not stopping when turning right on red - dangerous crossing in crosswalk	Continue to support Cloverdale Elementary's Crossing Guard funding at this location	Equity	Saanich Cloverdale School	Ongoing
Prior St.	Speed with traffic bypassing Hillside and Quadra St	CoV to continue to monitor and evaluate potential solutions for this area	Enforcement Engineering	CoV	Ongoing
Cloverdale Ave.	Vehicles drive up & down the hill very fast. Impatient drivers pass use sidewalks and frequently speed	Consider installation of bollards at strategic locations along the bike lane to prevent vehicles from hopping curb to pass	Engineering	Saanich	TBA as funding permits
Gorge Rd.	Poor perception of safety for cyclists	Consider working together to coordinate cycling infrastructure to improve perceptions and comfort	Engineering	Saanich/ CoV	Ongoing
Maplewood Ave	Poor perception of safety for cyclists	Maplewood is identified for improvements in Saanich's Active Transportation Plan	Engineering	Saanich	Long term
	Lack of bike path to Finlayson	Consider bike path down the west side of the golf course			Long term
Encouragement & Education Opportunities					
Potential 'Walk & Wheel for 5' or Walking School Bus sites					
Jackson Park	Lack of parking available on school premises	Promote 'Walk & Wheel for 5' from Jackson St Park, using new crossing at Finlayson/Jackson (500m) Work with CoV to consider installing CRD 'Walk & Wheel for 5' signage	Education Encouragement Equity	CRD-RSR School/PAC Vic PD CoV	Spring'21 & Ongoing
Summit Ave Street Parking	Lack of parking available on school premises	Promote Walk to 5 'Kiss and Go' drop off parking, with students the school from Fifth St (parents would not drive up cul-de-sac portion) Work with CoV to consider installing 'Kiss & Go' signage			Spring'21 & Ongoing
Topaz Park	Poor access to school site for vehicles	Potential Walk & Wheel for 5 site - Parking available at Topaz Park; access from Spruce Ave and/or Finlayson Ave & crossing guards at Finlayson & Quadra Personal Safety concerns without being supervised consider implementing with Walking School Bus (to address safety concerns)			Spring'21 &/or for future consideration
Mayfair Mall	Lack of crossing support at Douglas and Blanshard intersections	Requires landowner permission & supervision. When interest and supports permit, potential Walking School Bus (to address safety concerns) with drop off at Mayfair mall (corner of Blanshard/Finlayson)			For future consideration
School Streets					
5th Street (near school)	High volume of school traffic and parking on 5th street near school	Suggested location for School Streets: 5th Street -from Josette to turnabout. Permit required from CoV. See CRD's "School Streets- A How To Toolkit" School administration and PAC could consider trying this idea via a limited time pilot to evaluate success to implement on a regular, longer or permanent timeframe. School Streets aim to address safety concerns within the loop and the sidewalk at the entrance and exit. This could be piloted a number of ways – once a week with "Walk & Wheel Wednesdays", in cooperation with a School Streets (one week or one month long) or to promote the use of the Walk and Wheel for 5 sites.	Education Encouragement Equity	CRD-RSR School/PAC Vic PD CoV	For future consideration
Other initiative & ideas:					
ICBC - Think of Me Campaign	This campaign aims to educate students on risky driver behaviours, specifically within school zones and best safety practices for young road users	New Covid-safe delivery method to be offered to teachers in 2021 Lack of internal capacity at VicPD; may not have support to run Think of Me Community Campaign	Education Encouragement Equity	CRD-RSR ICBC School	Spring'21 & Ongoing
Crossing Guard Appreciation Month Pilot	This campaign aims to raise awareness on Active Travel Heros who enable students to walk and wheel safely to school	Interested classes will be invited to participate during Feb 2021, by making Thank You Cards to give to Crossing Guards		CRD-RSR ICBC School/PAC	Completed Feb 21'
I Ride - Bike Skills for Grade 4 & 5	Greater skill capacities needed for students	Scheduled for Grade 4-5 students, paid through Ready Step Roll		CRD-RSR School/PAC	Completed June'21

Timelines

Short-term: estimated completion 2021
 Medium-term: estimated completion 2022-2024
 Long term: estimated completion 4+ years

Appendix C:

Consultation Data & School Newsletters – Quadra Elementary



Quadra Elementary

August 2021



READY STEP ROLL
ACTIVE SCHOOL TRAVEL PLANNING

Consultation Data

Active School Travel Report

École Quadra Elementary 2020/21

Key consultation findings are presented in the *Active School Travel Report – École Quadra Elementary 2020/21*.

This appendix contains the data collected from the main sources of consultation as describe below. Please note that additional verification consultation was conducted as outlined in the main section of the report; this **qualitative data is not presented here**.

A. Hands Up Survey – Results

Collects in-class quantitative data from students by asking how students travelled to school and how they will be travelling home after school. Collected Monday October 19th – Friday Oct 23rd 2020. The anticipated Spring “Hands Up Survey” was cancelled as schools were not in session due to Covid-19.

B. Online Baseline Parent Travel Survey – Data

Collects qualitative and quantitative data from parents to gain a deeper understanding of how students are travelling, as well as why they choose or may opt to change their travel mode. Conducted at the beginning of the program as baseline data Monday June 8 – Friday June 26th 2020.

C. Walkabout – Data

Collects qualitative data from public and professional stakeholders to determine infrastructure improvements. The route followed on the Walkabout is developed through the analysis of the Online Parent Travel Survey comments and results. The initial Quadra Walkabout with the City of Victoria and District of Saanich took place in the morning on August 26th 2020. A second walkabout took place on September 22nd, 2020 at 8:15am with a limited number of invitees due to Covid-19. Attendees included PAC representatives, municipal staff, ICBC and Ready Step Roll staff – the principal was unable to attend due to an unexpected incident requiring his presence.



A. Student Hands Up Survey: Monday October 19th – Friday Oct 23rd 2020

Total students trips counted: 719

“How did you travel to and from school today?”

Mode To/From	TO	FROM	Grand Total
Walk	36.1%	42.5%	39.0%
Walk part-way	11.6%	10.4%	11.0%
Bike	3.1%	2.1%	2.6%
Roll	5.2%	2.1%	3.8%
W&W to School Bus	0.5%	0.6%	0.6%
Drive to School Bus	1.4%	2.9%	2.1%
Public Transit	1.6%	1.0%	1.3%
Carpool	3.3%	1.5%	2.5%
Car	37.3%	36.9%	37.1%
Grand Total	100.00%	100.00%	100.00%

Mode by Grade	K	K-1	1	2	3	3-4	4	4-5	5	Grand Total
Walk	20.0%	5.9%	25.5%	20.2%	23.5%	21.5%	12.1%	6.7%	22.4%	18.7%
Walk part-way	0.0%	0.0%	0.0%	11.5%	0.0%	0.0%	0.0%	14.2%	7.1%	4.2%
Bike	0.0%	0.0%	0.0%	0.0%	0.0%	0.0%	5.5%	0.0%	1.4%	0.8%
Roll	0.0%	0.0%	0.0%	0.0%	0.0%	0.0%	2.7%	0.0%	2.0%	0.6%
W&W to School Bus	22.9%	22.0%	22.3%	13.9%	20.9%	48.1%	26.9%	40.8%	22.9%	26.0%
Drive to School Bus	0.0%	0.0%	0.0%	3.8%	0.3%	0.0%	0.0%	4.2%	0.0%	1.0%
Public Transit	0.0%	0.0%	0.0%	0.0%	0.3%	0.6%	0.0%	0.0%	0.0%	0.1%
Carpool	0.0%	0.0%	0.0%	5.8%	1.4%	1.3%	0.0%	8.3%	1.7%	2.3%
Car	57.1%	72.0%	52.2%	44.7%	53.6%	28.5%	52.7%	25.8%	42.5%	46.5%
Grand Total	100.0%	100.0%	100.0%	100.0%	100.0%	100.0%	100.0%	100.0%	100.0%	100.0%

Mode by Day	Mon	Tues	Wed	Thurs	Fri	Grand Total
Walk	36.9%	39.3%	41.3%	40.6%	31.7%	39.0%
Walk part-way	11.2%	10.7%	11.3%	12.5%	4.8%	11.0%
Bike	1.9%	3.6%	2.6%	2.7%	1.6%	2.6%
Roll	3.1%	3.6%	4.3%	3.5%	6.3%	3.8%
W&W to School Bus	0.8%	0.0%	0.9%	0.8%	0.0%	0.6%
Drive to School Bus	1.2%	3.2%	2.6%	2.0%	0.0%	2.1%
Public Transit	1.5%	1.6%	0.9%	1.2%	1.6%	1.3%
Carpool	2.7%	2.8%	2.2%	2.0%	3.2%	2.5%
Car	40.8%	35.3%	33.9%	34.8%	50.8%	37.1%
Grand Total	100.0%	100.0%	100.0%	100.0%	100.0%	100.0%

B. Parent Baseline School Travel Survey

Date conducted: Monday June 8th – Friday June 26th 2020

Total number of surveys received: 108

“How far away does the student live from school?”

Distance	Percent of Students
Less than 0.5 km	24.49%
0.5 to 1.5 km	39.80%
1.6 to 3 km	15.31%
3.1 to 5 km	13.27%
Over 5 km	7.14%
Grand Total	100.0%

“How far away does the student live from school” (Sorted by travel mode)

Distance	Active Travel Users	Car Users	Grand Total
Less than 0.5 km	20.83%	4.17%	25.00%
0.5 to 1.5 km	23.96%	14.58%	38.54%
1.6 to 3 km	2.08%	13.54%	15.63%
3.1 to 5 km	3.13%	10.42%	13.54%
Grand Total	39.52%	60.48%	100.00%

“How does your child(ren) usually travel to and from school?”

Travel Mode	To School	From School
Walk	33.33%	34.04%
Walk part-way	6.25%	6.38%
Bicycle	8.33%	8.51%
Public Transit	3.13%	2.13%
Car	44.79%	44.68%
Carpool	4.17%	4.26%
	100.0%	100.0%

“How would you prefer to travel to and from school?”

Travel Mode	Percent of Students
Walk the whole way	46.32%
Walk part of the way (at least one entire block)	4.21%
Skateboard/scooter/wheelchair the whole way	2.11%
Bicycle	28.42%
School bus	7.37%
Public transit	2.11%
Car (just your family)	7.37%
Carpool (two or more families)	2.11%
	100.0%

Does your child own a suitable bike?

	Count of Suitable Bike Child
Yes	83.51%
No	13.40%
Grand Total	100.00%

Who usually accompanies your child to school or the bus stop?

Travel Mode	Total # of Students Using Mode	Adult	Adult & Other Students	Other Students	Alone
Bike	8	5	1	1	1
Car	44	33	11		
Carpool	4	1	3		
Public Transit	3	1	2		
Scooter/Skate/Wheelchair	2	2			
Walk	32	14	6	3	9
Walk Partway	6	3	1		2

Do you (the parent) own a suitable bike?

	Count of Suitable Bike Parent
Yes	87.23%
No	12.77%
Grand Total	100.00%

“Would you allow your child to walk or bike to/from school?”

Row Labels	Count of Allow Walk/Bike
Yes	75.61%
No	17.07%
Haven't considered it	7.32%
Grand Total	100.00%

“Why do you currently drive to/from school?”

Reasons Driven To School	Count
Sum of ReasonDriven_Distance from home is too far	23
Sum of ReasonDriven_Out of school care	10
Sum of ReasonDriven_Convenience/time pressures	21
Sum of ReasonDriven_Health/physical disability limitations (self or child)	0
Sum of ReasonDriven_Inconvenient timing or location of school bus	0
Sum of ReasonDriven_Too young	18
Sum of ReasonDriven_Lack of interest in walking/cycling	1
Sum of ReasonDriven_Lack of equipment (bike)	4
Sum of ReasonDriven_Traffic safety concerns	22
Sum of ReasonDriven_Personal safety concerns	14
Sum of ReasonDriven_Weather	4

“What would encourage you to let your child(ren) walk to/from school?”

Would encourage walking if...	Count
Sum of EncourageWalk_Increased visibility/awareness of school bus stops	4
Sum of EncourageWalk_Additional marked crossings	25
Sum of EncourageWalk_Continuous sidewalks/trails	63
Sum of EncourageWalk_Increased visibility/awareness of school zone	35
Sum of EncourageWalk_Lower vehicle speeds	42
Sum of EncourageWalk_Lower vehicle traffic volumes	33
Sum of EncourageWalk_Additional pedestrian activated crosswalks	19
Sum of EncourageWalk_Crossing guard attending key school crosswalk	35
Sum of EncourageWalk_Increased lighting	13

“What would encourage you to let your child(ren) bike to/from school?”

Would encourage biking if...	Count
Sum of EncourageBike_Continuous bike facilities	76
Sum of EncourageBike_Additional street crossings for bikes	3
Sum of EncourageBike_Lower vehicle speeds	44
Sum of EncourageBike_Secure/covered bike parking at the school	26
Sum of EncourageBike_Lower vehicle traffic volumes	19
Sum of EncourageBike_Crossing guard attending key school crosswalk	37
Sum of EncourageBike_Increased universal accessibility infrastructure	32
Sum of EncourageBike_Increased visibility/awareness of school zone	35
Sum of EncourageBike_Increased lighting	53

“What would encourage you to let your child(ren) walk & wheel to/from school?”

I will encourage walk and wheel by	Count
Sum of WillEncourage_More appropriate routes for active travel were identified	59
Sum of WillEncourage_My child has clothing to walk or ride in the rain	21
Sum of WillEncourage_Bike skills course was offered at our school	51
Sum of WillEncourage_Road safety course was offered at our school	55
Sum of WillEncourage_A Walking/Cycling School Bus was running at our school	23
Sum of WillEncourage_Active transportation encouragement events or celebrations were happening at our school	25
Sum of WillEncourage_Bike and Gear in good working condition	18

“What motivates you to use active travel?”

What Motivates me to AT	Count
Sum of Motivates_Getting physical activity/exercise	95
Sum of Motivates_Feeling present and connected	56
Sum of Motivates_Spending time outside	75
Sum of Motivates_Environmental benefits	66
Sum of Motivates_Spending time with other people	24
Sum of Motivates_Setting a good example	67
Sum of Motivates_Not having to worry about parking	45
Sum of Motivates_More fun than driving	54
Sum of Motivates_Safer than driving	9
Sum of Motivates_Cheaper than driving	37
Sum of Motivates_More convenient than driving	24

General comments regarding challenges and opportunities for active travel at Quadra: (Edited for privacy)

- Request for better quality bike storage (4)- covered bike rack (exposed to elements and theft)
- Request for more frequent public bus service (4) – request for additional/review of service on #4 and #6 routes to accommodate middle school catchment next year
- Catchment size for walkability (4) – large catchment area (3), lack of buses for out of catchment students (1)
- Lack of bike lanes to school (3) – school at corner of busy roads, want quieter route
- Personal safety concerns (2) – drug and alcohol use near school, homeless populations
- Access to bike racks (2) – poor access (lack of curb ramp) at back of school
- Thank you (2) – for crosswalk at Linwood/Jackson (1), for walkable urban design (1)
- Lack of sidewalk connectivity (1)

- Vehicle volumes in school zone due to school placement (1)
- Lack of scooter storage (1)
- Would like to walk with others (1)
- Would like more police enforcement in school zone (1)
- Would like more enforcement on jaywalking during drop off and pick up (1)
- Would like to bring child's bike on daycare bus (1)

Safety concerns sited regarding route to/from École Quadra Elementary at top three locations (Edited for privacy)

- **Quadra (23)**
 - Along extent – Vehicle volumes & speeds (7), bike lane safety/comfort (5) intersection/crossing safety (4), lack of sidewalk buffer – concerns of being hit by vehicle/near misses (3)
 - At Tolmie – Vehicle speed (3), intersection timing for pedestrians (1)
 - At Cloverdale – Additional crossing guard wanted at intersection (1)
 - In front of School—peak hour congestion (1), U-turns around the median (1)
 - At Finlayson – Compliance of school zone through intersection (2)
 - At Tattersall – Crossing guard wanted at intersection (1)
- **Finlayson (15)**
 - Along extent (Tattersall to Hillside)– Vehicle speed (6), vehicle volume (5), bike lane connectivity/comfort – bike lane is blocked by parked commercial vehicles (4), Intersection comfort/safety (4)
 - At Jackson – Request for signalized crosswalk (6)
 - At Fifth – Request for signalized crosswalk (4)
- **Tolmie (9)** Along extent (Blanshard to Quadra St) – Vehicle speed (5), Vehicle volume (3), Lack of crosswalk (3)
- **Fifth (8)**
 - Along extent – Vehicle volumes during drop off (4), poor sight lines caused by parked vehicles (2)
 - At Summit – Request for Crossing (8), drivers not stopping at crosswalk (4), Lack of visibility (fence, telephone poles, traffic congestion) (3), vehicle speed (4), vehicle volume, no crossing guard
- **Hillside (8)**
 - At Cook – Turning vehicles (3), vehicle volume, vehicle speed, drivers running red lights, no crossing guard, narrow sidewalk
 - At Graham – Vehicle volume, vehicle speed, drivers don't stop at crosswalk, drivers don't stop at crosswalk, narrow sidewalk, multiple lanes of traffic, crosswalk is difficult for people with mobility devices, strollers and children on bikes
- **Summit (5)**
 - At Fifth – Vehicle speeds and volumes (3), Rolling stops (1)
 - At Jackson/Graham – Rolling stops (2), No crosswalk (1), Speed (1), Volumes (1)
- **Cook (2)** Speed (2)
- **Hillside (2)** Along extent – No bike lane (2), Volumes (1)
- **Prior (2)** Along extent – Vehicle speeds and volumes (2)
- **Salsbury (2)** Lack of sidewalk (1), lack of crosswalk (1)
- **Topaz (2)** Along extent – Speed (1), At Fifth – Rolling stop (1)
- **Cloverdale (1)** Along extent – Speed (1)
- **Maplewood (1)** Near golf course -- No Pathway (1) , Speed (1)

C. School Neighbourhood Walkabouts

Walkabout 1 (Before school start up)

Date conducted: August 26th, 2020 (10:00-11:00 am)

Participants (5): Natalie Bandringa (CRD), Hailey Steiger-Tang (City of Victoria), Fred Billingham (City of Victoria), Lauren Hermansson (Saanich), Kelsey Mclaggan (Saanich)

Walkabout 2 (After school start up)

Date conducted: September 22nd, 2020 (8:15-10:15 am)

Participants (7): Natalie Bandringa (CRD), Hailey Steiger-Tang (City of Victoria), Fred Billingham (City of Victoria), Colleen Woodger (ICBC), PAC Representatives (2) Regrets: Connor McCoy (Principal), Aaron Foster (SD61)

Location	Issues Raised	Potential Solutions Brainstormed	Key Player
Fifth Street cul-de-sac	Parked cars caused reduced visibility for pedestrians -Intersection at Summit & Fifth has no marked crosswalk, poor stopping compliance (rolling stops) and poor student crossing education -Poor ramp access for wheelchairs/strollers -Main access point, bike racks are not close	could enhance (or remove?) parking restrictions at this location using timed signs, adding in a traffic button, educating parents of Kiss n Go -- perfect spot for a school street case study. add ramp for accessibility expand the 30km/hr zone and enhance school zone signage	CoV
		Relocate bike racks to back area and consider using 10K from CoV to construct a bike shelter	Sd61/PAC CRD
Fifth Street Cut-through	Cyclists do not dismount	Consider installing "share the road" signage, may be solved when Jackson AAA is done.	CoV
Quadra/Finlayson	Crossing time to short for pedestrians - Vehicles turning right, conflict with pedestrians Crossing - Traffic Island south of intersection prevents left hand turns from drop off, causing parents to do U-turns on Quadra - vehicle volumes/speeds	Prioritize pedestrians at intersection: could retime to a slower walking speed of 1.0m/second, add right turn on red ban, Leading Pedestrian Interval, repaint parallel/stop bars and add green conflict paint Install bollards along centre line to prevent U-turns, support with DT5 option at church/synagogue across the street	CoV
Finlayson	Vehicle volumes, speeds Lack of crossing locations across Finlayson	Explore bollards as an option at pinch points to increase separation, Jackson RFB crossing complete fall 2020 move 30km/hr sign east of Jackson, repaint/add stencils to bike lane. At Staff driveway access – add concrete landing pad to little pathway gate opening	CoV
Quadra school zone		need to review this area more closely at peak times to see what the issues/vehicle movements are here – covid has drop off loop closed Painted crosswalk at the staff driveway entrance may be considered	CoV
Tolmie	Lack of safe crossings, poor sight lines from parked vehicles	Review Crossing signal times for pedestrians Consider installing mid-block crossing along Tolmie	Saan/CoV

Active School Travel Planning

Fall 2020 Update - Quadra Elementary

Quadra Elementary 2020/21

The Capital Regional District, City of Victoria and Quadra Elementary has teamed up through the **Ready Step Roll program** to identify barriers and seek solutions so more families can walk or wheel (bike, skateboard, wheelchair etc.) to/from school. This partnership focuses on infrastructure upgrades, education and encouragement to make active travel safer and more doable for families.



School Community Consultation Highlights

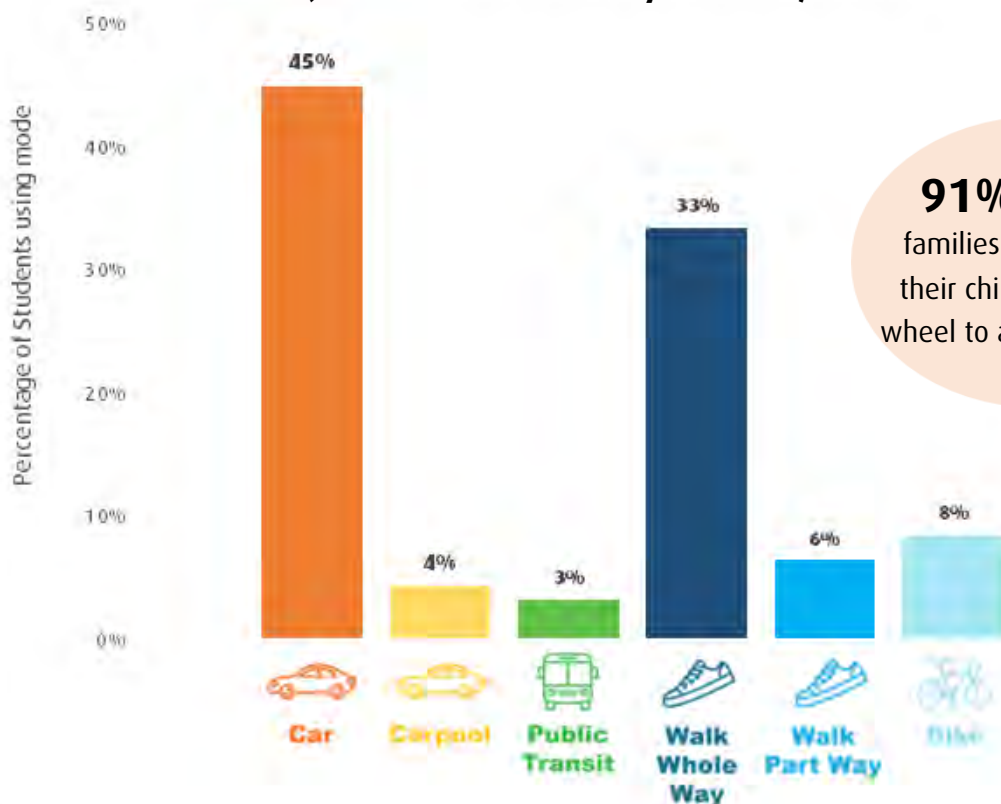
- ✓ **June 2020:** 108 families completed the Baseline School Travel Survey
- ✓ **August - September 2020:** School-Neighbourhood Walkabouts were attended by Victoria, Saanich, CRD and ICBC staff, Quadra PAC and parent representatives

Data and insights from the survey and walkabout will help identify and prioritize:

1. Improvements to infrastructure in the school neighbourhood and/or on the school grounds;
2. Encouragement and education opportunities specifically appropriate for Quadra families.



How do Quadra students usually travel to/from school?



91% of surveyed families would **prefer** their child to walk and wheel to and from school

Want to get involved or share your ideas?

We want to hear from you!
Contact your PAC or email:
Natalie Bandringa,
Program Coordinator,
regionalplanning@crd.bc.ca

Keep Kids Moving this Fall!



GoByBike Week 2020

September 28th to October 4th

Everyone is invited to join whether riding to school, to do an errand, or just for fun!

Register and create a team with your class or make your own family team. Don't forget to log your trips to win... at the end of the week, one lucky class in Greater Victoria will win a set (x25) of fun bike bells and reflective slap bands!

Ways to Participate

[Register or Join a Team](#)

[Visit a Celebration Station](#)

[Listen to a Bike Skills Webinar](#)

[Try your local Neighbourhood Ride](#)

[Complete the Sticker Challenge](#)

**WALK & WHEEL TO
SCHOOL WEEK**
October 5-9, 2020

Walk & Wheel to School Week is free kick-start campaign held annually during the first week of October, working with schools to celebrate, educate and encourage students and their families to use and learn about the benefits of active school travel.

Need ideas? Check out the **2020 Guidebook** for tips and ideas to help keep kids walking and wheeling all winter long.

What's Next for Ready Step Roll Quadra?

From the data collected during from the Baseline School Travel Survey and Walkabouts, a list of key locations and active travel concerns was developed.

After an initial site visit, Ready Step Roll partners met with Quadra PAC representatives on Tuesday, September 22nd, 2020 during morning drop off to walk the local school streets and investigate concerns and potential solutions heard from families.

To prioritize improvements and create positive change at Quadra, an Action Plan will be developed this winter, based on the 6 E's Approach to Active School Travel Planning. In the meantime, the program will continue to work with Quadra staff and parents to support active travel at our school.

The Capital Regional District, City of Victoria, District of Saanich and Quadra Elementary are working together to help more families walk and wheel to and from school!

This partnership identifies active travel barriers for Quadra Elementary families and potential infrastructure upgrades, in addition to education and encouragement opportunities for more doable, safe active school travel.

What's happening at Quadra?

In September - October

- ✓ Ready Step Roll partners joined together to do a walkabout around the School Neighbourhood
- ✓ Students took part in a Hands Up Survey (*see below*)

In November

- ✓ Ready Step Roll began draft action planning
- ✓ Ready Step Roll presented at virtual PAC meeting

In December

- ✓ PAC led the installation of Quadra's Bike Shelter
- ✓ Ready Step Roll met with the City of Victoria and District of Saanich to confirm engineering actions
 - Quadra's Action Plan will be shared with the PAC in January/February 2021



The new Finlayson/Jackson crosswalk is almost ready! Students will feel safer walking & wheeling to Quadra. Join them along the way by parking at Jackson St Park!

As a thank you to 108 families who participated in the June Baseline School Travel Survey, Ready Step Roll has purchased a BRAND NEW SCOOTER RACK to support students who want to ride their scooters to and from Quadra!

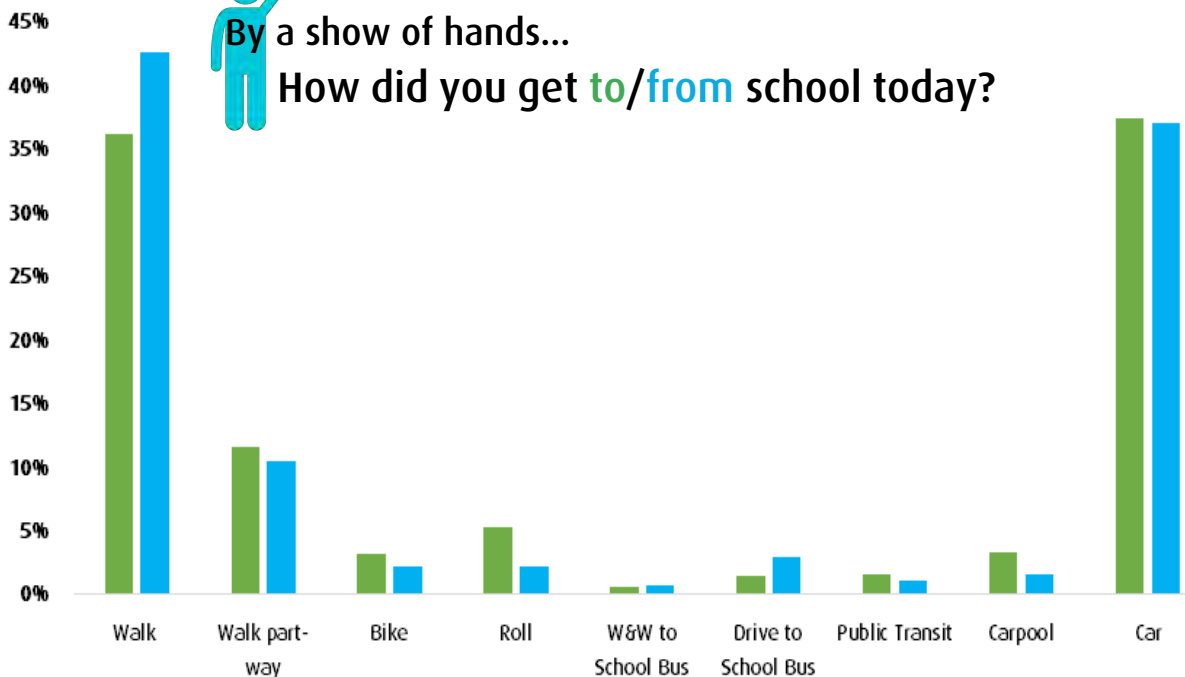
Also just in time for the rain, Quadra students & staff can now use the NEW BIKE SHELTER to keep their rides secure and dry.

Watch for our new scooter rack at Quadra in 2021!



By a show of hands...

How did you get to/from school today?



Looking to learn more about Ready Step Roll?

Visit our web page at www.crd.bc.ca/ready

Have an idea? Want to get involved?

Contact your PAC or email:

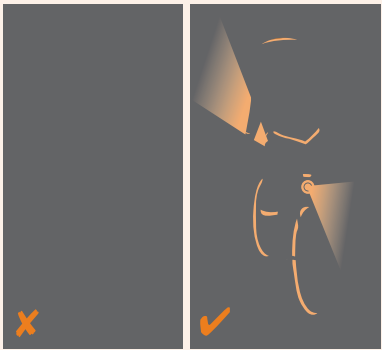
Natalie Bandringa,
Program Coordinator,
regionalplanning@crd.bc.ca

Walking and Wheeling in the winter is possible when families plan their route, prepare with the right gear and practice smart, seasonal street skills!

Help your child walk & wheel safely this winter:

BEING SEEN IS A BRIGHT IDEA!

- ✓ Carrying a light (or several) will help you see and be seen by others



- ✓ Bright, reflective rain gear will keep you warm, dry and visible in dark and rainy weather

If you are riding your bicycle, make sure it has:

- ✓ a front white light
- ✓ a rear red light

TAKE ACTION AGAINST DISTRACTION!

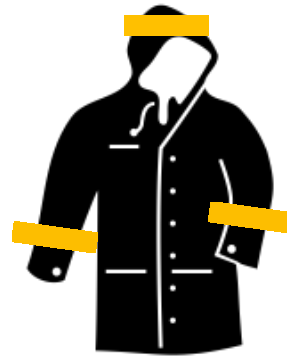
- ✓ Remove headphones so you can hear approaching cars that may be hard to see
- ✓ Avoid using devices while walking and wheeling

WALK THIS WAY!

- ✓ Walk on the inside edge of the sidewalk away from the road. **If there's no sidewalk - walk facing oncoming traffic**, so you can see approaching vehicles.
- ✓ Give yourself extra time to travel and remind children to watch for seasonal street hazards caused by rain, ice, & snow
- ✓ If your child is wheeling to school, remind your child to watch for slick terrain and to take corners slow

No reflective gear at home? Make your own!

Apply reflective tape in easy-to-see areas on your jacket for extra visibility!



- ✓ collar or hood
- ✓ sleeves or cuffs
- ✓ lower back

What's Next for Ready Step Roll at Quadra?



1. In January, the draft Action Plan for Quadra will be shared with Quadra staff and PAC

- This plan lists out actions to be carried out by Ready Step Roll partners, based on their individual roles and jurisdictions
- To develop this plan, Ready Step Roll follows the [6 E's approach - learn more here](#)



2. In January, Drive to 5 sites for Quadra Elementary will be shared with families to help students being driven to/from school get the benefits of walking and wheeling part-way

- Learn more about ["Drive to 5" here](#)

This year Quadra students, staff and PAC members partnered with Ready Step Roll to enable and encourage more students and staff to walk & wheel to/from our school.

Our goal was to encourage active travel and learn how we can reduce congestion/improve road safety at our school using **the 6 E's Approach to Active School Travel Planning**.

Evaluation



Education



Equity



Encouragement



Engineering



Enforcement

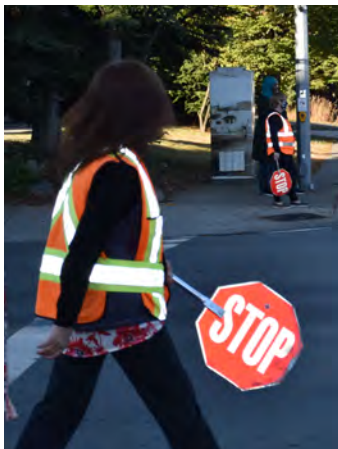


Shifting gears at Quadra Elementary

On June 22-24th, our Grade 4/5 students will participate in the *iRide Bike Skills Course*.

Our June 2020 survey shows that 45% of students are usually driven to/from Quadra. **For families who currently drive**, we asked how they would prefer to travel and heard that **over 90% would rather walk & wheel**.

Every day, many of us get to make a choice on how to travel to and from our school. **Quadra families can have a positive collective impact on our school's streets** simply by **changing individual travel behaviours** to include more walking & wheeling where possible.






Crossing Guard Appreciation Campaign

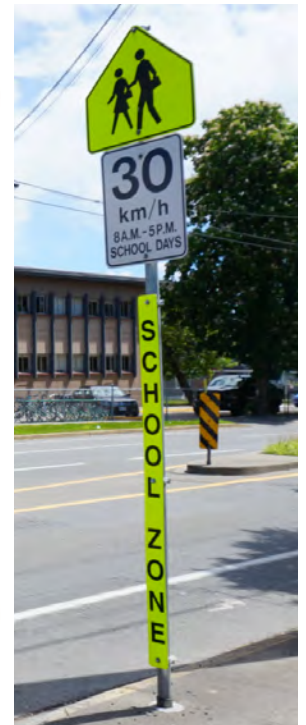
In February, many of our classes participated in creating personal thank you cards for our two crossing guards! The cards were gifted along with a coffee mug and gift card courtesy of ICBC.

We are so thankful to have two fully funded crossing guards to help enforce safety on our schools busy streets.



Encouraging & enabling students to Walk & Wheel to Quadra

- ✓ **Fluorescent strips** have been added to existing school zone signs to improve visibility for drivers. **The school zone was also extended** on Finlayson Avenue to include the Jackson/Finlayson intersection.
-  ✓ **The Jackson/Graham AAA bike route** is now complete! Check out the new pedestrian/cyclist crosswalk at the Jackson/Finlayson intersection.
-  ✓ **The Plan Your Route to Quadra Map and Walk & Wheel for 5 activity** encourage families to find their best route to school or try a new one!
-  ✓ **We have a new scooter rack!** Scooters are fun, less expensive than bikes and easy to learn making them a great way to get to school!
- ✓ **Flexible Bollards** will be added along the yellow centre line of Quadra St. to prevent left hand turns in and out of our schools drop off loop. This change will **help improve safety for our students and for all road users** travelling in our school zone!



A BIG shout out & thank you to our partners!

Principal Connor McCoy, Erinne Willock, the PAC, City of Victoria, District of Saanich, ICBC, SD61 & IRide!



What happens when we enable & encourage students to Walk & Wheel from home or 5 minutes away?



We help build student confidence & capability



Students become more self-reliant, helping families and household schedules



We create safer streets by reducing congestion before & after school



We support local climate action by lowering individual GHG emissions



Students arrive alert & ready to learn after a burst of activity



You can save time & money (& frustration!) by skipping school traffic line ups



Students see physical and mental health benefits



With siblings & neighbours no one has to travel alone, creating peer-to-peer connections in our community

Keep up the momentum this summer and watch for Quadra's full Action Plan in the final School Travel Report, available in Sept 2022!

www.crd.bc.ca/ready
regionalplanning@crd.bc.ca

Appendix D: 6 E's of Active School Travel Online Resources for School Communities



August 2021

THE 6 E'S APPROACH TO ACTIVE SCHOOL TRAVEL PLANNING



The 6 E's of Active School Travel Planning – Resources for School Communities is an [online resource](#) which provides schools with the ideas, tools and activities needed to build and support the ongoing internal capacity needed to continue a school-wide active travel culture.

The 6 E's Approach to Active Travel aims to be a comprehensive, integrated and sustainable strategy to build school-neighbourhoods that are walkable and wheelable for all ages and abilities, by mitigating and addressing barriers preventing accessible active travel.

Students, families, educators, and Active Travel School Leaders are encouraged to [access the resources online](#) through the [Ready Step Roll webpage](#) to support school community equity, education, and encouragement active travel initiatives, while complimenting evaluation, engineering, and enforcement actions facilitated by local government engineers, the CRD and community partners.

Visit our webpage to learn more about the [6 E's approach to active travel](#) with tips, tools and ideas to support active travel at your school!

6 E's of Active Travel

The 6 E's of active travel describes the multi-faceted approach used by Ready Step Roll to build capacity within school communities after they have completed the program. The resources below have been developed as part of the Ready Step Roll program, but all resources have been made available for public use in all regional school communities.

Education	Equity	Evaluation	Engineering	Enforcement	Encouragement
-----------	--------	------------	-------------	-------------	---------------

With the right training, students can walk and wheel to school more often while enjoying increased physical skill sets and self-confidence. School communities learn about active travel benefits and caution points through road and traffic safety education and bike skills courses, developed in partnership with police, ICBC, and local non-profit organizations.

- Road Safety Scavenger Hunt**- Keep your eyes peeled! This resource challenges families to find different infrastructure, traffic signs, special vehicles, and neighbours while you walk through your community. Use it to teach your child about traffic safety or to change up your daily walks.
- Move your Feet on the Street Challenge** - How many ways can you move on your street? We're challenging kids to travel their "home stretch" using as many different forms of active transportation as possible. Includes a warm up brainstorming activity, followed by hands-on learning and finally, thematic-podcasts to help kids wind down after moving.
- Ready Step Roll Bingo** - On your marks, get set, BINGO! Challenge family members to be the first player to complete a line on their bingo card while performing different strength building movements, exercises, and stretches to help stay active at home.
- Backyard Adventure Course** - Get creative and see how you can move through your homemade obstacle course! This resource includes ideas on how to transform common household objects and toys into different obstacles for kids to maneuver through in the driveway, backyard, or even the living room!
- Physical Literacy Resource List**- a growing master list containing links to websites with ideas and activities to help keep kids active while they develop personal physical literacy. This list will continue to be updated.
- ICBC Road Safety Resources for Teachers**

[Equity »](#)

6 E'S APPROACH TO ACTIVE SCHOOL TRAVEL PLANNING

The 6 E's approach to Active School Travel Planning aims to be a comprehensive and sustainable approach to making school-neighbourhoods more comfortable to walk and wheel, by identifying and addressing safety and social barriers to better support and enable Active Travel with confidence.



Equity

Ensure that the initiative is benefiting all demographic groups across the Capital Region, with particular attention to ensuring safe, healthy, and fair outcomes for all students of diverse family, cultural, socio-economic backgrounds, abilities and identities.



Evaluation

Collect data and user insights to better understand the school-neighbourhood context, to determine appropriate approaches, identify opportunities to improve the effectiveness of an approach for a given school community and monitor changes over time.



Engineering

Infrastructure upgrades to improve the comfort of walking and wheeling on streetscapes and built environments located within immediate school-neighbourhoods, on common/high-use routes, and on school property.



Enforcement

Crossing guards, school supervision and police working together to improve awareness and compliance of parking regulations, traffic laws, and personal safety with a focus on the immediate school-neighbourhood and on school property.



Education

Information and initiatives to improve perceptions of active travel to reduce conflicts between transportation modes and build the confidence and personal skills needed to safely and confidently walk or wheel to and from school.



Encouragement

Celebrate and promote walking and wheeling as easy, fun and inclusive ways to travel in our community, alone or with friends and family.