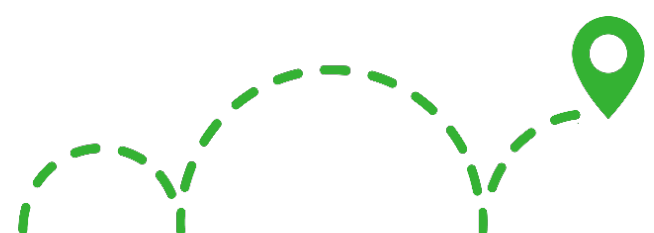




École Marigold Elementary

Active School
Travel Report
2020/21



READY STEP ROLL
ACTIVE SCHOOL TRAVEL PLANNING

Facilitated by the CRD and published August 2021. Proudly supported by:



Contents

Active School Travel Planning	4
Benefits of Active School Travel	5
CRD’s Ready Step Roll Initiative	6
School Profile and Catchment Travel Context	8
6 E’s Approach to Active School Travel Planning.....	9
Equity	10
Evaluation.....	11
Consultation.....	12
School Travel Snapshot	13
Active School Travel Infrastrucuture Challenges.....	16
Active School Travel Oppourtunities	17
Action Plan Highlights.....	18
Engineering	19
Enforcement.....	20
Education.....	21
Encouragement.....	22
Equity	23
New Active Travel Initiatives at Marigold Elementary	24
Plan Your Route to Marigold Elementary and Map	27
Keep Rolling with ‘Next Steps’	29
Partner Key Contacts and Links to Resources.....	30
Appendices.....	30

Appendices

Appendix A – Marigold Elementary - Plan Your Route Map to School and Activity

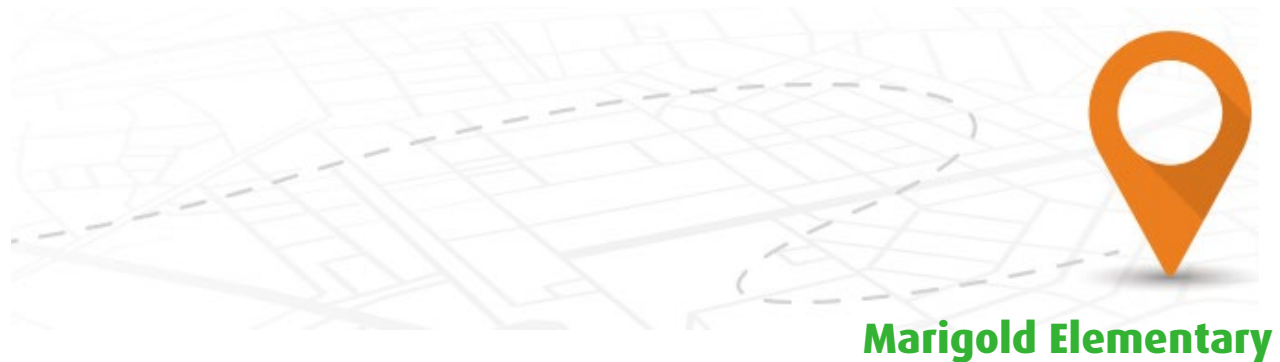
Appendix B – Marigold Elementary - Action Plan

District of Saanich Fall 2021 School Zone Improvements

Appendix C – Marigold Elementary Consultation Data and School Newsletters

Appendix D – 6 E’s of Active School Travel - Online Resources for School Communities

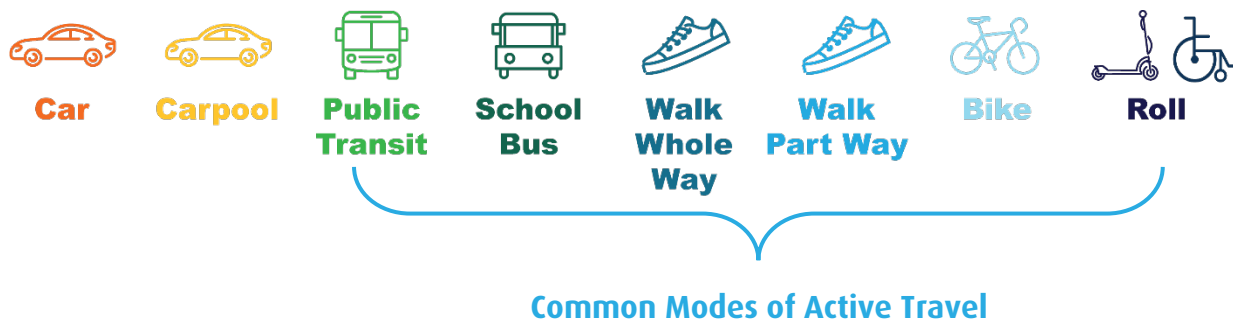
ACTIVE SCHOOL TRAVEL PLANNING



Active School Travel Planning aims to increase rates of students walking and wheeling to/from school, using a school catchment/neighbourhood-based planning process. Walking and wheeling encompasses bikes, scooters, rollerblades, skateboards, using a wheelchair or riding the bus fully or part-way to and from school. Active School Travel Planning initiatives have already been successfully implemented in many communities across Canada and internationally. The [“International Best Practices in Regional Planning for School Travel”](#) (Ryerson University, Toronto, April 2016), looks at a number of case studies and key learnings from around the world.

The [Capital Regional District \(CRD\) Board Priorities](#) and [Corporate Plan](#) identifies *transportation* as a key regional priority and *envision[s] that residents have access to convenient, green and affordable multi-modal transportation systems that enhance community well-being*. Helping to further this priority through behaviour change and infrastructure improvement at a foundational level, the CRD coordinates the active and safe routes to school planning initiative, known as the CRD’s **Ready Step Roll – Active School Travel Planning Initiative**.

Active travel describes using any form of transportation that relies on human-power to get to your destination - fully or part way.



BENEFITS OF ACTIVE SCHOOL TRAVEL



Active travel describes using any form of transportation that relies on human-power to move such as riding a bike, a skateboard, rollerblades, a scooter, walking/using a wheelchair, or taking the bus.

Students who **walk and wheel** to and from school (fully or part way!) can:



Build individual confidence & capability



Arrive alert & ready to learn after a short burst of activity



Become more self-reliant, supporting families & household schedules

Create safer streets by reducing congestion before & after school



Improve their physical & mental health



Help save time & money by avoiding waiting in school traffic



Support safety in numbers & create connected communities



Participate in climate action by lowering community
Green House Gas emissions



www.crd.bc.ca/ready

CRD'S READY STEP ROLL INITIATIVE

What is the Ready Step Roll initiative?



The Ready Step Roll (RSR) - Active School Travel Planning initiative works annually with five school communities and respective local government agencies to **encourage and enable more students to have the choice to use active travel to get to/from school**. Students who walk and wheel to/from their school or their bus stop arrive alert and ready to learn, while reducing regional GHG emissions to support safe and connected communities. The Ready Step Roll initiative is a comprehensive and sustainable approach to **making school-neighbourhoods more comfortable to walk and wheel**.

Working with partners, **RSR identifies and addresses safety and social barriers** to better support and enable active travel with confidence. The success of the initiative relies on **participatory partnerships** with provincial and local governments, school districts and schools (administration, PACs and students), along with the Insurance Corporation of British Columbia (ICBC), Island Health Authority, police forces, local businesses, and non-profits. Working together, the partners focus on creating solutions through **equity, evaluation, engineering, enforcement, education and encouragement**, known as our “6-E’s approach to active school travel planning”.

What is the active school travel planning process?

Over the 18-month RSR initiative (approximately January through to the following June), the CRD works collaboratively with partners to:

1. **Identify** schools and local governments that are **committed to working** together.
2. **Facilitate** the creation and implementation of a school-catchment **Active School Travel Report** to further enable and inspire active transportation mode choice. During the initiative, local active travel safety concerns on common school routes are identified via school travel surveys, a School-Neighbourhood Walkabout, as well as a variety of consultation activities.
3. **Build capacity** of the school for ongoing initiatives that focus on **Equity, Evaluation, Engineering, Enforcement, Education and Encouragement (the 6 E’s)**.



















What is the goal of RSR?

Increase the rate of student and staff active travel trips to and from school by reducing barriers in active travel accessibility, safety, comfort and capacity.

Who are the key partners?

- **CRD** – Facilitator and Project Manager of the Ready Step Roll (RSR) initiative.
- **District of Saanich** – Jurisdictional owner of municipal roads, road right-of-way and municipal lands, provides local knowledge on street level infrastructure, assists in development of Action Plan, evaluates and considers proposed solutions, supports/undertakes implementation and follow-ups with school regarding safety improvements post RSR initiative.
- **CRD Parks** – Jurisdictional owner of Regional Multi-Use Trails (Galloping Goose, E&N, Lochside).
- **BC Ministry of Transportation and Infrastructure (MoTI)** – Jurisdictional owner of highway, assists in development of Action Plan, evaluates and considers proposed solutions, supports/undertakes implementation and safety improvements post RSR initiative.
- **ICBC** – Offers expertise and partners with local government for road safety improvements and provides educational resources for school communities.
- **School Administration and School District** – Provides insight into school sites and bussing, evaluates and considers implementation of proposed solutions on school property, and supports implementation of education and engagement initiatives during and post RSR initiative.
- **School Community (Parents/Guardians, PACs, and Students)** – Provides perspective on the school-neighbourhood, identifies opportunities for safer drop-off/pick-up, contributes to action planning, and supports education and encouragement initiatives during and post RSR initiative.

What is the initiative's timeline?

SET UP INITIATIVE		COLLECT DATA & ANALYZE					PLAN		IMPLEMENT*	EVALUATE	School Travel Planning Process Complete		
School/ Municipality Recruitment	Program Begins	Baseline & Hands-up Survey	Analysis & pre-walkabout with staff		Neighbourhood Walkabout		Develop Action Plan	Encouragement Education Equity Enforcement Engineering	Final Report Feedback & Follow-up				
													
													
DEC – JAN	APRIL	MAY	JUNE	JULY	AUG	SEPT	OCT	NOV	DEC	DEC – MAY	JUNE	SEPT	
Introduce program to: <ul style="list-style-type: none"> • School principal & administration • School teachers & staff • Parent Advisory Committee • Municipal staff • School District staff 		Identifies: <ul style="list-style-type: none"> • How students travel • Walking and cycling safety concerns • Potential improvements and actions • Favourite routes 					In collaboration with: <ul style="list-style-type: none"> • School • Municipality • School District • Other partners 		Coordination with partners could include: <ul style="list-style-type: none"> • Bike Skills course • Walking School Bus • Walk and Wheel for 5 • Plan Your Route Map 		School Travel Plan completed Stakeholder feedback Stakeholder support to ensure capacity building		

SCHOOL PROFILE & CATCHMENT TRAVEL CONTEXT



École Marigold Elementary School Profile

School District	School District 61
Local Government	District of Saanich
Catchment Areas	Marigold – French immersion catchment for Strawberry Vale, Tillicum, View Royal, Eagle View, Mckenzie and North Ridge schools.
Grades	K-5
2020 Enrollment	296 students
School-Based Active Travel Support	<ul style="list-style-type: none"> ➤ A crossing guard located at Grange/Burnside crosswalk ➤ Multiple bike racks ➤ Partnership established with Spectrum School to help reduce peak hour congestion in the drop-off zone ➤ Active PAC and school parent community
New! Ready Step Roll Active Travel Initiatives (ongoing)	<ul style="list-style-type: none"> ➤ Three identified, unsupervised “Walk & Wheel for 5” sites and routes; see map on page 28 <ul style="list-style-type: none"> ○ Outdoor school supervision begins at 8:15am to encourage parents to “Kiss & Go” or “Park and Stroll” ➤ Installation of NEW scooter rack ➤ 6 E’s of Active Travel Companion Guide for Schools

École Marigold Elementary is one of 27 elementary schools in School District 61, and one of 18 elementary schools located in the District of Saanich. The school is located on Burnside Rd next to Spectrum Secondary School and St. Joseph’s Elementary Schools, collectively creating a one kilometer long school zone on a road that has historically been used by commuters to avoid highway congestion. This is expected to be relieved by the McKenzie Interchange Project – clearer outcomes will be available when traffic patterns re-stabilize post pandemic.

From our baseline surveys, Marigold families demonstrated an interest in achieving higher active travel participation but cited missing sidewalk connectivity and dangerous intersection crossing perceptions as common barriers. As an established neighbourhood, Marigold’s school area is connected through trails and various standards of sidewalk - future District of Saanich and CRD Parks plans will help address concerns in this area outside of the Ready Step Roll initiative. As a result, current efforts should be made to direct users to use routes with lower traffic volumes and to help educate student users on trail etiquette.

6 E'S APPROACH TO ACTIVE SCHOOL TRAVEL PLANNING

The 6 E's approach to Active School Travel Planning aims to be a comprehensive and sustainable approach to making school-neighbourhoods more comfortable to walk and wheel, by identifying and addressing safety and social barriers to better support and enable active travel with confidence.

	<p>Equity</p> <p>Ensure that the initiative is benefiting all demographic groups across the Capital Region, with particular attention to ensuring safe, healthy, and fair outcomes for all students of diverse family, cultural, socio-economic backgrounds, abilities and identities.</p>
	<p>Evaluation</p> <p>Collect data and user insights to better understand the school-neighbourhood context, to determine appropriate approaches, identify opportunities to improve the effectiveness of an approach for a given school community and monitor changes over time.</p>
	<p>Engineering</p> <p>Infrastructure upgrades to improve the comfort of walking and wheeling on streetscapes and built environments located within immediate school-neighbourhoods, on common/high-use routes, and on school property.</p>
	<p>Enforcement</p> <p>Crossing guards, school supervision and police working together to improve awareness and compliance of parking regulations, traffic laws, and personal safety with a focus on the immediate school-neighbourhood and on school property.</p>
	<p>Education</p> <p>Information and initiatives to improve perceptions of active travel to reduce conflicts between transportation modes and build the confidence and personal skills needed to safely and confidently walk or wheel to and from school.</p>
	<p>Encouragement</p> <p>Celebrate and promote walking and wheeling as easy, fun and inclusive ways to travel in our community, alone or with friends and family.</p>





EQUITY

Ensure that the initiative is benefiting all demographic groups across the region, with particular attention to ensuring safe, healthy, and fair outcomes for all students of diverse family, cultural, socio-economic backgrounds, abilities and identities.

How does the RSR initiative integrate 'Equity' at a local government level?

- ✓ Works to consult with all relevant school and community/government partners by offering multiple engagement opportunities on a variety of platforms.
 - **In person:** Walkabout, PAC and principal meetings, mapping, engagement/celebration stations, Hands-Up surveying method.
 - **Virtual:** Baseline Online Travel Surveys, email/phone parent/guardian consultation, 24/7 access to resources via website, material sharing with initiative partners.

How does the RSR initiative integrate 'Equity' at a school community level?

- ✓ Works with PACs to facilitate equity into all opportunities and ideas.
 - **Educational:** Works with PAC representative to facilitate PAC volunteer coordination for active travel events (bike skills etc.).
 - **Financial:** Hosts equipment exchange station (bikes, helmets, rain gear) at PAC and after-school events, shares available bursary and grant opportunities, and highlights continuing safety efforts that work to support all students (crossing guard appreciation).
- ✓ Works with School Administration to address gaps in before and after supervision to support family and work schedules.
 - Proposes "Walk & Wheel for 5", Walking School Bus or Bike Train initiatives.
 - Realignment of school ground supervision as needed.
- ✓ Works with School District Facilities and Transportation to address accessibility issues when travelling to/from school.
 - Safe and accessible school sites: Elimination of tripping hazards and improved wheelchair access at school access points, pedestrian visibility issues at school access points, considers safety and accessibility of active travel near school bus stops.



EVALUATION

Collect data and user insights to better understand the school-neighbourhood context, assess which approaches are appropriate, identify opportunities to improve the approach and monitor changes over time.

To help better understand how students travel to and from school, why families make their travel choices, and what would encourage families to shift towards active travel modes, the initiative collects data through various means of formal and informal consultation. The CRD evaluates and uses the data and insights of the school community to facilitate development of the Action Plan with the local government, school and other participating community members.

Hands-Up Survey

- Week-long daily survey taken in-class held at the beginning, middle and end of the initiative, to understand how students typically travel to and from school. This survey may be used as a baseline throughout the initiative and in future years by the school to gauge change over time.

Baseline School Travel Survey

- Online questionnaire answered by parents and guardians is a deeper dive into identifying current and preferred travel modes, specific barriers, safety concerns and suggestions to encourage families to shift towards using more active travel.

School-Neighbourhood Walkabout

- Build on the school survey data to get a better understanding of the challenges families have walking and wheeling to school. Participants work together to brainstorm engineering, education and encouragement solutions. This information is used to create the Action Plan to guide improvements.

Personal Communications

- Meetings, email, phone conversations throughout the initiative with Principal, PAC and local government confirm collected data and facilitate the development of the Action Plan.

CONSULTATION

Marigold Elementary - School Consultation Summary



215 Baseline School Travel Surveys, representing 72% of students (June 2020)



900 Student trips recorded on Hands-Up Surveys (October 2020)*



In-School Encouragement & Engagement Activities

- Walk and Wheel to School Week (October 2020)
- Crossing Guard Appreciation (February 2021)
- Grade 4/5 Bike Skills (May 2021 – iRide)
- GoByBike Week (May/June 2021)
- ICBC “Think of Me” - K-3 Road Safety (May & Fall 2021)



One pre-Walkabout with staff (school, municipal, and CRD – September 2020)

One School-Neighbourhood Walkabout (PAC, parents, school administration, municipal SD61, ICBC and CRD staff, SaanichPD October 2019)



Six principal &/or PAC meetings (2020-21)



Local government meetings, with numerous phone & email commutations focused on drafting the Action Plan (202-21)

*Recorded over 4 days due to Pro-D day.

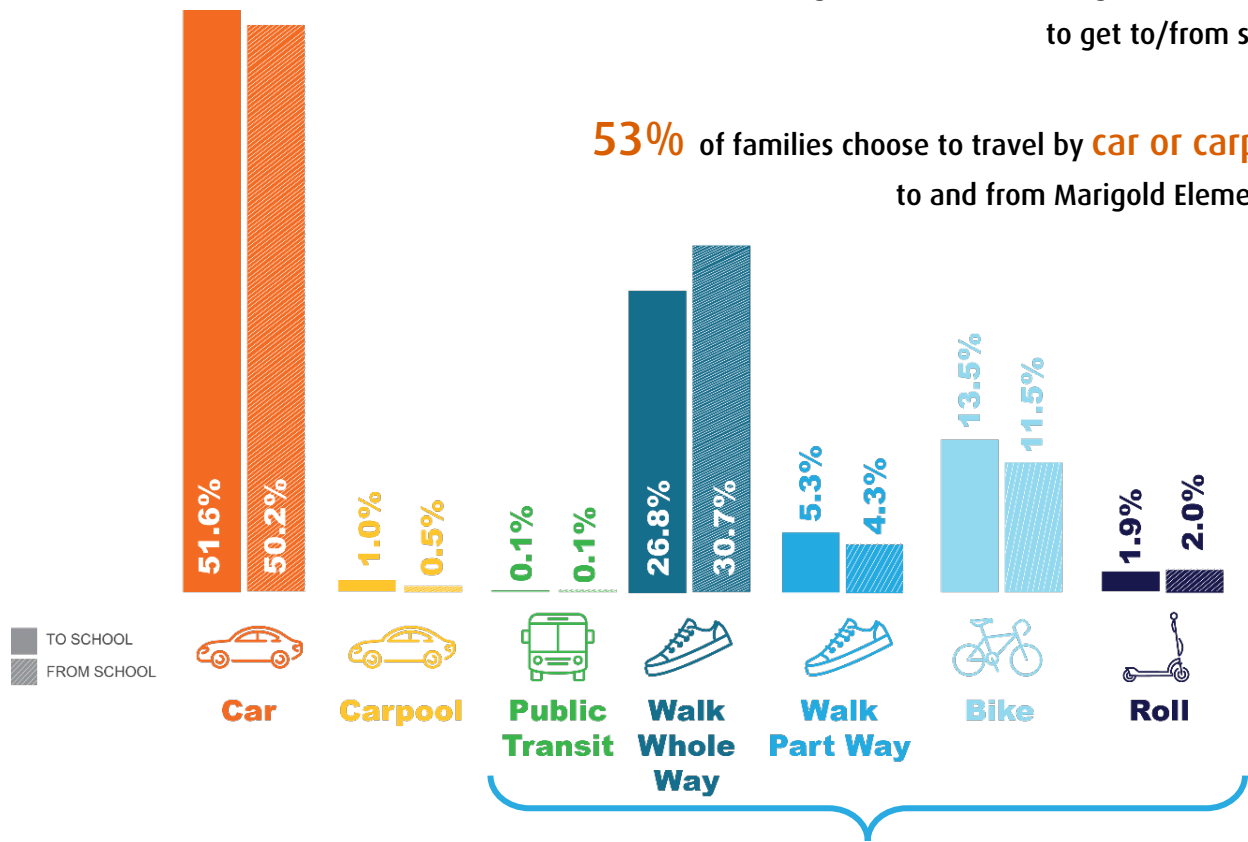
SCHOOL TRAVEL *SNAPSHOT*

Data was obtained from the on the 2020 Marigold Elementary Baseline School Travel Survey (online – parents and guardians) & *Hands-Up Survey (in-class – students).

How did you get to and from school this week*?

47% of Marigold students are using **active travel** to get to/from school

53% of families choose to travel by **car or carpool** to and from Marigold Elementary



Modes of Active Travel

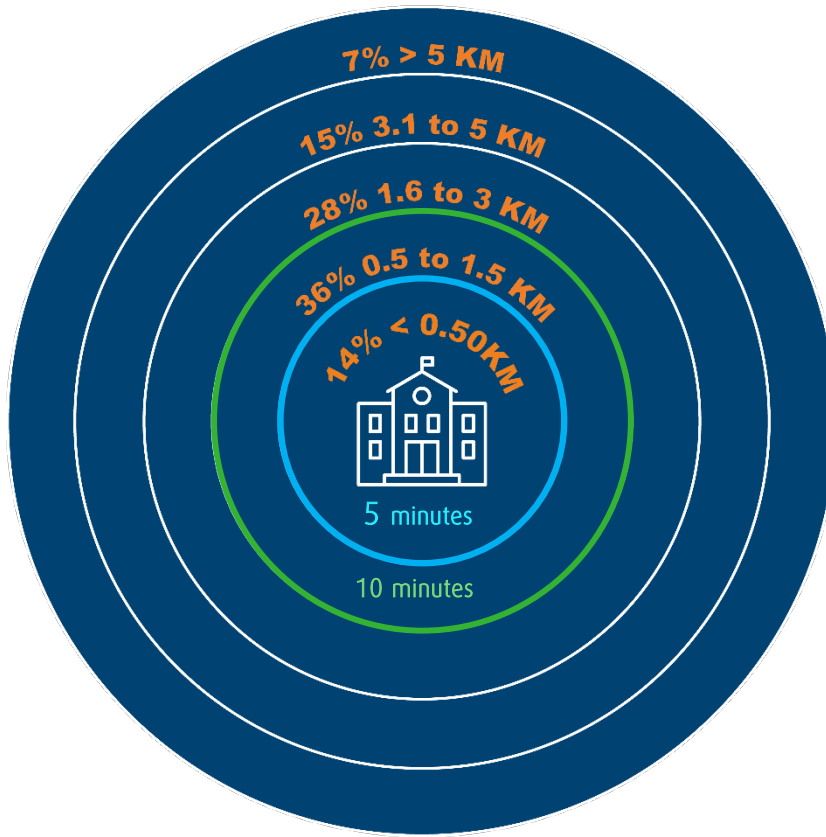


TIGHT FOR TIME? TAG ALONG!

88% of students using active travel to and from Marigold Elementary are accompanied by an adult.

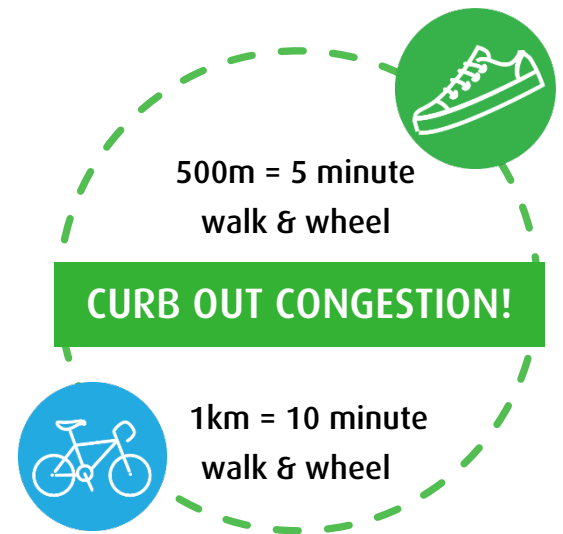
Meet up with neighbours & try a “Walk & Wheel for 5” site!

How far do students live from Marigold Elementary?

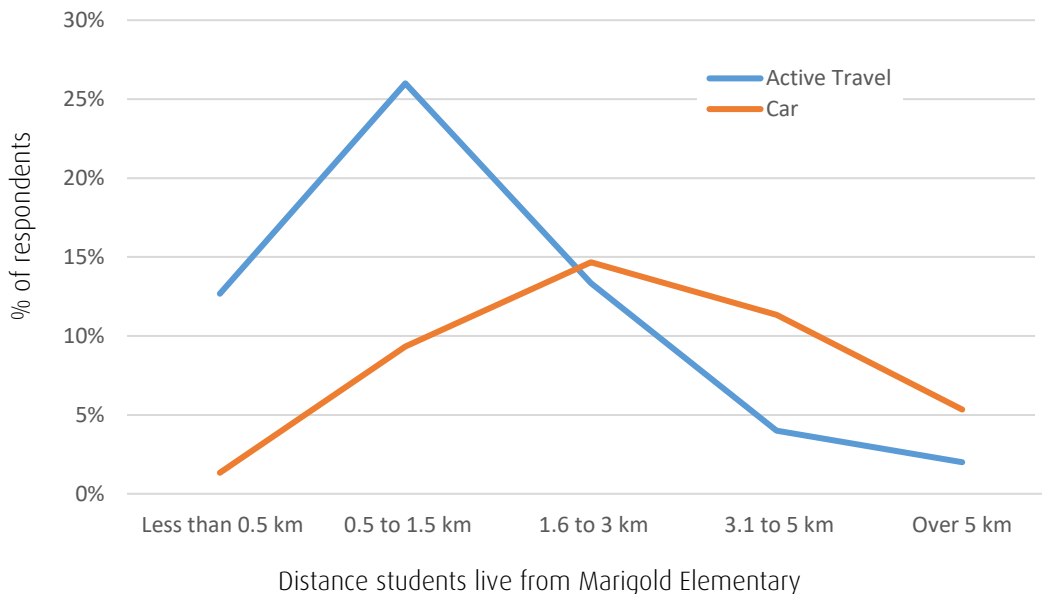


50% of surveyed families live less than 1.5km from school, which is about a 10-15 minute bike or walk.

78% of students live within 3km of Marigold Elementary.



How does distance impact travel choices at Marigold Elementary?

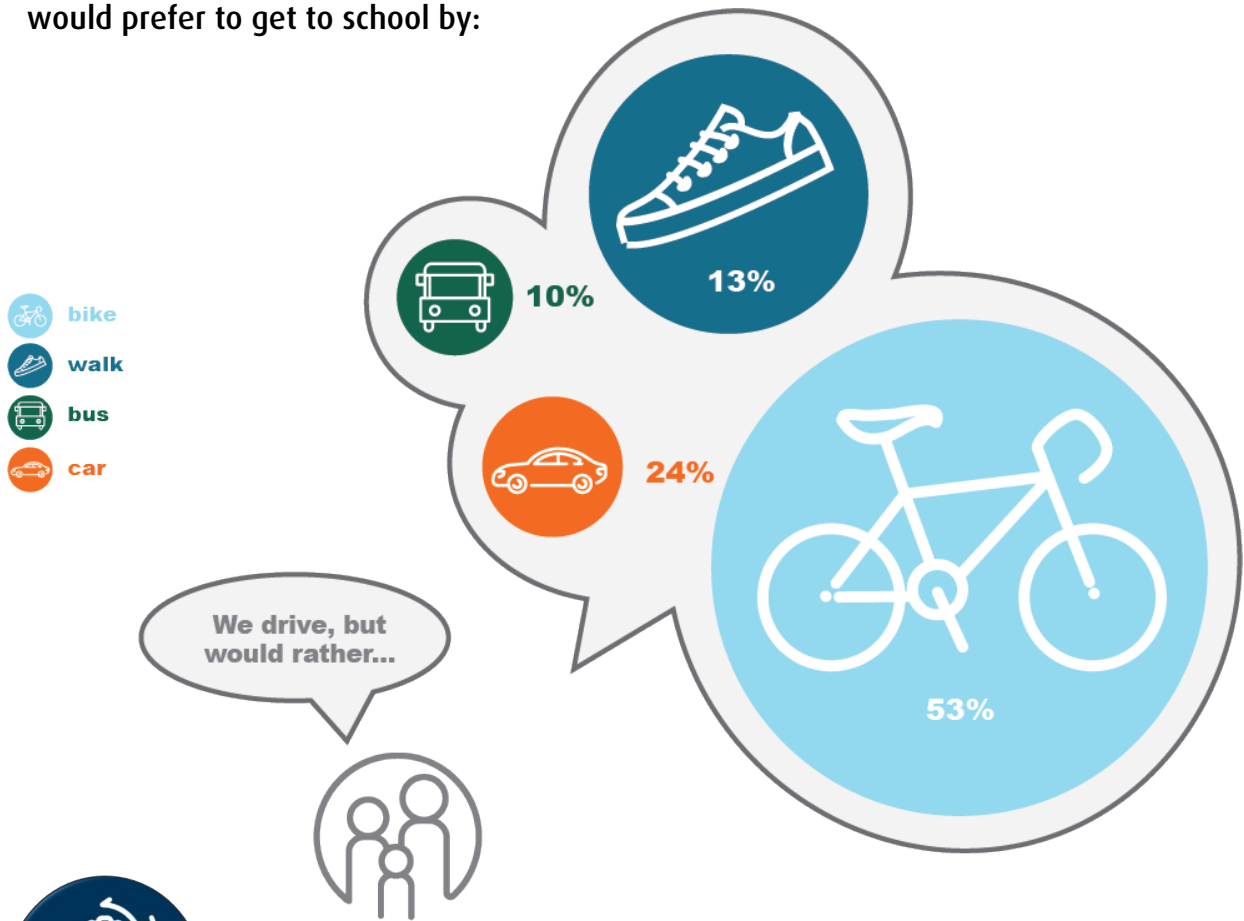


10% of students are driven to and from school, but live within 1.5km of Marigold Elementary.

How would you prefer your student to get to Marigold Elementary?

Of all Marigold Elementary families surveyed, **90%** of families are currently using or would prefer their child switch to active travel to get to/from school, but currently **47%** usually drive.

Of the 47% of families driving, families said they would prefer to get to school by:



HOW YOU CHOOSE TO MOVE MATTERS!

Every car off the road means more space for students to walk & wheel to school. If you can't choose active travel all the way, Walk & Wheel for 5 to support your school's safety and to give your student the benefits of active travel!



ACTIVE SCHOOL TRAVEL INFRASTRUCTURE *CHALLENGES*

The following infrastructure challenges were identified through formal and informal consultation - listed in order of commonly raised concerns, priority and proximity to school.

Burnside Rd W

- Lack of connected sidewalks, comfort of sidewalks, lack of connected bike lanes, lack of visible school zone signage for drivers, vehicle speeds and volumes, lack of crossing opportunities outside of school zone, request for additional crossing guard

Grange Rd

- Lack of connected, comfortable sidewalks, poor sidewalk accessibility, lack of crossing opportunities, request for traffic controls at Burnside and Grange intersection, request for additional crossing guard, rolling stop signs, poor visibility due to road layout

Galloping Goose

- Speed from other cyclists, lack of lighting, lack of delineation, personal safety concerns, safety at road intersections

Admirals/Craigflower

- Vehicle speeds/volumes leaving highway, poor stopping compliance at crosswalks, request to extend crossing guard hours

Interurban

- Comfort of bike lanes and sidewalks, request for additional separation between bike lane and roadway, challenging intersections to cross, vehicle speeds and volumes

Esson/Portage

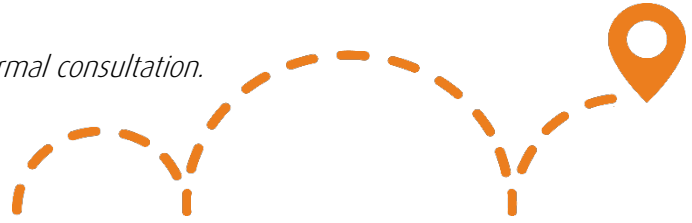
- Lack of stop signs, lack of sidewalk, lack of crosswalk

Other streets

- **Helmcken** - Intersection comfort, vehicle speeds and volumes
- **Carey** - Vehicle speeds and volumes, busy intersections
- **Cowper** - Vehicle speeds and volumes on narrow road
- **Tulip** - Lack of sidewalks, use of road as cut-through for commuters
- **Tillicum** - Challenging to cross at Gorge on bike, lack of comfortable bike lanes
- **Baker** - Lack of crossing to Panama Flats
- **Craigflower** - Vehicle speeds and volumes
- **Hastings** - Request for additional lighting
- **Walter/Vincent/Bodega** - Lack of sidewalks on these routes
- **Wilkinson** - Bike lane safety

ACTIVE SCHOOL TRAVEL *OPPORTUNITIES*

Opportunities identified through formal and informal consultation.



**For more details, see Action Plan (Appendix B)*

***For more resources, see Plan Your Route Resources (Appendix A), Action Plan (Appendix B) & 6 E's of Active School Travel - Online Resources for School Communities (Appendix D)*

ACTION PLAN HIGHLIGHTS

One of the main deliverables of the Ready Step Roll Initiative is the **Action Plan** (see Appendix B). The Action Plan outlines possible solutions to higher priority active travel challenges and opportunities commonly raised during the consultation process. The suggested actions are subject to the respective jurisdictions for consideration, approval and required budgetary process.

The following sections highlight key active travel challenges raised and possible solutions presented in the Action Plan through the lens of the 6 E's principles.

In the following 'Action Plan – Highlights', actions marked with:

- Completed at the time of this final report
- May not have been committed to OR are not yet completed
- Committed ongoing actions

ENGINEERING



Infrastructure upgrades to improve the comfort of walking and wheeling on streetscapes and built environments located within immediate school-neighbourhoods, on common/high-use routes, and on school property.

Active Travel Challenges Raised

Traffic, speed, volume and improved pedestrian safety in School Zone and surrounding neighbourhood

“Cars often whip by even though it's a school zone, especially in the morning. They don't sometimes stop for pedestrians crossing the crosswalk.”

“Poor and inadequate sidewalks in our neighbourhood.”


“At the corner of Esson and Portage, there needs to be 2 stop signs to make it safe to cross”

Action Plan Key Messages and Solutions

District of Saanich

- Major School Zone improvements for traffic controls and safer crossing in crosswalks (to be completed in fall 2021)
- Implement Saanich’s Active Transportation Plan (short, medium and long-term actions)

SD61, Marigold Administration & PAC

- Consider making Spectrum Ln a “shared street” by limiting vehicles past high school parking lot entrance and by marking bike “sharrow” () images on laneway.

Pedestrian and Cycling Safety on Galloping Goose and Pedestrian Overpass

“The Galloping Goose is a great way for kids to bike however the Goose can be treated as a bike freeway. Some signage for school hours and watching bike speed would help me feel safer with my child biking on the Goose to school.”

“Lighting and reduced bike speed during school hours on the Goose.”

CRD Parks

- Paint middle line on stretch of trail leading up to and adjacent to the 3 schools
- Conduct study and public consultation on trail widening and lighting
- Consider speed limits

MoTI

- Install barrier on gravel slope at foot pedestrian overpass on Esson/Portage



ENFORCEMENT

Crossing Guards, school supervision and police working together to improve awareness and compliance of parking regulations, traffic laws, and personal safety with a focus on the immediate school-neighbourhood and on school property.

Active Travel Challenges Raised

Action Plan Key Messages and Solutions

Speed in School Zone
and Crosswalk Safety

*“Cars that speed in school zone
and don’t stop at crosswalks.”*

District of Saanich

- Requested increased enforcement from Saanich Police during high volume traffic hours

School Administration

- Crossing Guard Appreciation (annually February)
- ICBC’s “Think of Me” in-class lesson (May 21)
- ICBC’s “Think of Me” Enforcement (September 21)
- ICBC’s “Think of Me” – annual programming

Parent/Guardian behaviour at arrival
and dismissal times

“Parents that drive have very poor behaviour at drop-off and pick up times – blocking driveways, double parking, arriving very early and parking in drop-off zones – it is so bad sometimes there have even been some fights!”

School Administration

- Encourage the use of “Walk & Wheel for 5” and “Kiss & Go sites”
- Advise parents/guardians of how to utilize lower Grange Rd, school and Saanich parking lots
- Actively enforce at arrival & dismissal times

Saanich & School Administration

- Consider printing and installing RSR new “Walk & Wheel for 5” and “Kiss & Go” sites signs

EDUCATION



Change perceptions of active travel and support initiatives to improve safety, reduce conflicts between transportation modes, and build the confidence and skills needed to safely and confidently walk or wheel to and from school.

Active Travel Challenges Raised	Action Plan Key Messages and Solutions
<p data-bbox="302 548 643 632">Lack of Traffic Safety and Bike Skills Classes</p> <p data-bbox="217 674 737 842"><i>“If kids had better bike skills with the Goose leading right to Marigold there is a lot of potential for more kids to ride and walk independently or with friends”</i></p>	<p data-bbox="769 527 1214 562">School Administration/RSR (CRD)</p> <ul style="list-style-type: none"> <li data-bbox="769 594 1354 638">☑ Host grade 4/5 bike skills (iRide May’21) <li data-bbox="769 648 1386 737">➤ School/PAC to annually host bike skills with GoByBike or iRide <li data-bbox="769 747 1419 884">☑ Partner with ICBC & Police to deliver “Think of Me” Road Safety education campaign for students K-3 <li data-bbox="769 894 1430 938">➤ Deliver “Think of Me” annually (online or ICBC)
<p data-bbox="240 978 704 1115">Identifying Safer Routes to School and Promoting Alternative Drop-off/Pick-up Areas</p> <p data-bbox="240 1157 716 1276"><i>“I am hoping that the access to the new pedestrian overpass at the top of Esson makes a big difference for us.”</i></p> <p data-bbox="212 1314 737 1577"><i>“I commute by bike past my daughter’s school but we have been limited by time pressures in having her bike with me, but my husband commutes to work by car and can drop her off. Often he will drop her with her bike and we commute home together.”</i></p>	<p data-bbox="769 957 906 993">RSR (CRD)</p> <ul style="list-style-type: none"> <li data-bbox="769 1024 1422 1360">☑ Develop: <ul style="list-style-type: none"> <li data-bbox="829 1083 1341 1119">→ “Walk & Wheel for 5” at various sites <li data-bbox="829 1129 1422 1266">→ See “Plan Your Route Map/Brochure” (identifies Walk & Wheel for 5 sites/routes & active travel infrastructure) <li data-bbox="829 1276 1393 1360">→ Educational resources to support student physical literacy (see Appendix D) <p data-bbox="769 1398 1159 1434">School Administration & PAC</p> <ul style="list-style-type: none"> <li data-bbox="769 1465 1455 1602">➤ Promote new resources to families to help them identify safe active travel infrastructure along Marigold Elementary routes
<p data-bbox="204 1650 683 1734">Need for Educational Resources for School Communities Post-Initiative</p> <p data-bbox="212 1776 737 1902"><i>Previous RSR schools have indicated a need for resources after the conclusion of the RSR initiative in order to build their capacity</i></p>	<p data-bbox="769 1629 906 1665">RSR (CRD)</p> <ul style="list-style-type: none"> <li data-bbox="769 1696 1471 1938">☑ Create the <i>Ready Step Roll “6 E’s of Active School Travel - Online Resources for School Communities”</i>, includes the Walk & Wheel for 5 Guide, School Streets Guide, ICBC Road Safety and content for Newsletters. (Appendix D)

ENCOURAGEMENT



Promote walking and wheeling to kids as easy, exciting, practical, fun and inclusive ways to travel to and from school alone or with friends.

Active Travel Challenges Raised

Encourage parents to utilise the Galloping Goose and Pedestrian Overpass

“School needs better storage options available for bicycles and scooters.”

“I would prefer to walk or cycle away from breathing exhaust and with greenery to make the paths beautiful and enjoyable.”

Action Plan Key Messages and Solutions

RSR (CRD)

- Purchase & install new scooter rack (2021)
- Enable more students to ride confidently by providing Grade 4/5 Bike Skills

School Administration/PAC

- Marigold participated in the first annual Crossing Guard Appreciation Campaign
 - Take part in community celebrations and campaigns that promote active transportation / continue to host school events that encourage healthy and active lifestyles: such as Walk & Wheel to School, GoByBike Week, Jump Rope for Heart
 - Promote:
 - Plan your Route map/brochure
 - “Walk & Wheel for 5” sites
 - “6 E’s of Active School Travel - Online Resources for School Communities”



EQUITY

Ensure that the initiative is benefiting all demographic groups, with attention to ensuring safe, healthy, and fair outcomes for all students of diverse family, cultural, socio-economic backgrounds, abilities and identities.

Active Travel Challenges Raised	Action Plan Key Messages and Solutions
<p style="text-align: center;">Desire for sidewalks and safer space for kids traveling on the Galloping Goose</p>	<p>School Administration/RSR (CRD)</p> <ul style="list-style-type: none"> ➤ Promote RSR “Plan Your Route” map and RSR resources to encourage more families to choose active travel with confidence
<p><i>“Roads in our neighbourhood are built for cars only – more sidewalks would enable more kids to walk.”</i></p> <p><i>“Biking for the majority of the time works well, especially since a good chunk of the Goose was paved.”</i></p> <p><i>“Adults that are commuting by bike on the Goose often speed and are selfish to younger kids - need safe space.”</i></p>	<p>RSR (CRD)</p> <ul style="list-style-type: none"> <input checked="" type="checkbox"/> Hosted iRide for grade 4/5, ensured that assisted bikes were provided and that students at all bike skill levels were included <input checked="" type="checkbox"/> Worked with ICBC to host ICBC’s “Think of Me” program (May & September 21) <p>CRD Parks</p> <ul style="list-style-type: none"> <input checked="" type="checkbox"/> Paint middle line on Galloping Goose near school <input checked="" type="checkbox"/> Public consultation regarding Galloping Goose
<p style="text-align: center;">Identifying and promoting safer routes to school and alternatives to drop-off/pick up at the school</p>	<p>RSR (CRD)</p> <ul style="list-style-type: none"> <input checked="" type="checkbox"/> Develop: <ul style="list-style-type: none"> → “Walk & Wheel for 5 ” at various sites → “Plan Your Route Map” (identifies active travel infrastructure along school routes) → Educational resources to support student physical literacy <p>School Administration & PAC</p> <ul style="list-style-type: none"> ➤ Promote new resources to families to help them identify safe active travel infrastructure along Marigold school routes
<p><i>“For us, we enjoy biking and walking regularly, and would love to have a safe route to school, that didn't primarily travel along busy commuter corridors.”</i></p>	

NEW ACTIVE TRAVEL INITIATIVES AT MARIGOLD ELEMENTARY

In order to continue to support active travel to and from school, parents/guardians and school administration need to support each other, work together, and practice!

Plan Your Route to Marigold Elementary

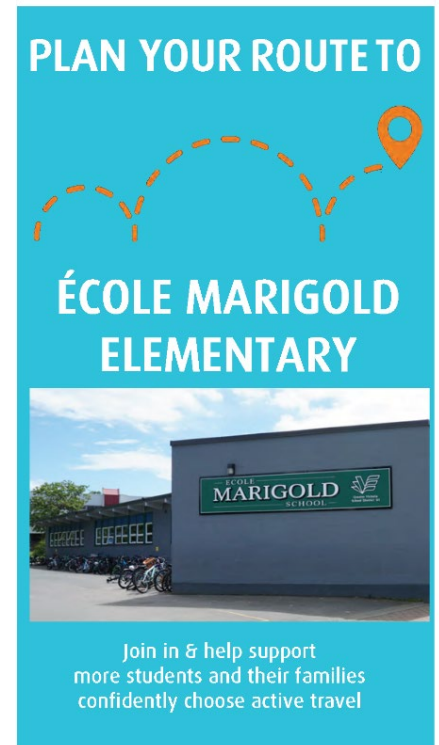
As identified on the “Plan Your Route to School” map, Marigold Elementary has adopted the following ongoing encouragement initiatives to support active travel. These school-specific resources are bundled in Appendix A. For more ideas see [6 E's of Active Travel – Online Resources for School Communities](#).

Walk & Wheel for 5

These unsupervised sites and routes are about a five minute (500 meters) walk from the school and may be used as alternative meeting sites for families that drive*, walk, wheel, bike or take public transit. The goals of “Walk & Wheel for 5” include easing vehicle congestion at the school, saving time and building student confidence, all while

enabling more families

to benefit from using active travel to get to/from school. These sites have been selected as they are on common routes that encourage the use of pedestrian and cycling infrastructure (sidewalks, quiet streets, pedestrian activated crosswalks, multi-use trails, etc.).



How to use these sites

On your school’s “Plan Your Route to School” map and brochure these sites and routes are identified. Whether you drive*, walk or wheel, use these sites to “Meet-Up & Go”, “Park & Stroll” or simply “Kiss & Go” on your way to school, work or back home. Arranging to meet with a friend – or just knowing that others will be walking and wheeling along this route – increases everyone’s comfort and enables more families to be able to choose to use active travel fully or part-way to/from school.

*Not all sites are suitable for drop-off/pick-up with a vehicle, see your school’s “Plan Your Route Map”

Kiss & Go!

These sites are located in the school drop-off loop, parking lot and/or along nearby streets where parking is limited or not permitted. The intent of Kiss & Go is to reduce congestion. This creates safer spaces for those students taking active travel, ensuring those families that have mobility or student needs have access to drop-off/pick-up parking, as well as reducing congestion for everyone!



Crossing Guard Appreciation



Marigold students and staff participated in the first annual Crossing Guard Appreciation event hosted by the CRD, ICBC and the school. Every day, no matter the weather, dedicated Crossing Guards help students and their families get to and from school safely. To express gratitude, crossing guards were gifted an ICBC travel mug and classes created hand-made thank you cards to say thanks for all they do.

Grade 4/5 Bike Skills

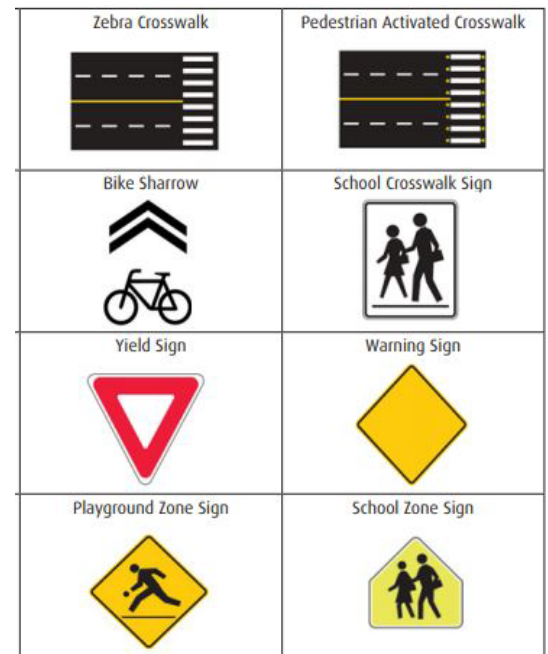
To encourage and enable more students to be able to walk & wheel to school, Ready Step Roll secured bike skills through iRide. For future years, an ongoing provincial initiative called Everybody Rides Grade 4-5 program is available for students at Marigold Elementary. Cycling education for students helps raise a generation of sustainable transportation and safe road users.



When everybody rides, everybody wins!

ICBC – Think of Me

In the fall of 2021, Marigold students will participate in the “Think of Me” program in partnership with ICBC and Saanich police. This program aims to have police enforce traffic issues near the school using messages drawn on “warning tickets” created by students to raise awareness around road safety. The program is focused on students in grades K-3. Classes will also be encouraged to go outside around the school-neighbourhood to identify infrastructure, street signs, alternative routes and hazards.



GoByBike Week and the CRD Walk & Wheel to School Week

Formerly known as Bike to Work (or school) Week, GoByBike has evolved to be more inclusive to individuals and the various trip destinations throughout Greater Victoria. Schools are able to create a team online, track rides and win prizes by participating in this annual spring event. The CRD Walk & Wheel to School Week was run independently through schools due to COVID-19. Schools had the option to participate by tracking trips on a school poster and offering small encouragement prizes.



Capital Bike is the local GoByBike chapter for Greater Victoria. In addition to facilitating the annual GoByBike events, the team at Capital Bike has also built the new All Aboard Family Cycling Program. This program includes online family cycling resources focusing on three topics: Cycling While Pregnant, Cycling With Kids (On Your Bike)

and Cycling With Kids (On Their Bikes). They also offer free skills workshops and family rides where instructors teach best practices, bike maneuvering skills and tips, ending with a fun all ages and abilities group ride to a fun destination.

PLAN YOUR ROUTE TO MARIGOLD ELEMENTARY

“Plan Your Route to Marigold Elementary” map was created to show the pedestrian and cyclist infrastructure that provides for safer active travel in Marigold Elementary school neighbourhood, as well as the “Walk & Wheel for 5” sites and routes, and “Kiss & Go” sites.

Try planning & practicing your family’s active route to school!

Appendix A: Plan Your Route to School Resources

- ✓ Brochure with map - Marigold Elementary
- ✓ Route Planning Activity for Families

Families who **plan**, **prepare**, and **practice** walking and wheeling to school help support children of all ages and abilities to learn safe and smart street-skills while gaining confidence, independence, and daily physical activity. Children will discover how easy, fun and sustainable any trip can be when you plan, prepare and practice using active travel.

Plan

- ✓ Plan the route to school with your child (see “Plan Your Route” map/brochure)
- ✓ Identify landmarks, road names, crosswalks to use, as well as potential hazards
- ✓ Help your child dress for the weather and visibility in the dark
- ✓ Ensure all equipment is safe and suitable for your child
- ✓ Try a “Walk and Wheel for 5” site and route (see “Plan Your Route” map/brochure)

Prepare

- ✓ Set a good example when walking/wheeling and driving
- ✓ Practice walking/wheeling with your child on weekends - [CRD Bike Map](#)
- ✓ Teach Pedestrian Skills and rules of the road using [ICBC educational materials](#)
- ✓ Teach Bike Skills and road rules using the [“Bike Sense – Edition 7”](#)
- ✓ Encourage independence – allow your child to help make decisions along the way

Practice

- ✓ Quiz your child on road rules and street signs
- ✓ Keep things fun with [CRD’s Active Travel Resources for School Communities](#)
- ✓ Practice your route, invite friends to join you in walking/wheeling
- ✓ Explore new trails, parks, and activities that encourage active travel

TIPS FOR FAMILIES

- ✓ Teach children to use crosswalks, sidewalks & crossing guards when possible. If there are no sidewalks, walk on the opposite side of the street to watch for oncoming traffic.
- ✓ Build up confidence by practicing your skills together as a family on the weekend.
- ✓ Encourage kids to try new ways to travel (walk, bike, scooter etc.) to keep things fun!
- ✓ Invite neighbours & friends to join you along the way or meet up & go together part-way!
- ✓ Usually drive door-to-door? Try a 'Walk & Wheel for 5' site to reduce school traffic congestion & other benefits of active travel.

Walk & Wheel for 5 sites/routes - NO parking

Walk, Bike, Bus or Roll to Admirals Rd Cul-de-Sac, Wilkinson/Burnside Rd W & Esson/Portage Rd

Kiss & Go Maximum 2 minute stop at arrival/dismissal

Pedestrian Activated Crosswalk

Marked Crosswalk

Crossing Guard - 15 mins before & after school

Major Intersection with Signalized Crosswalk

Public Bus Stop closest to Marigold Elementary

Bicycle Rack

School Access Point

Sidewalk

Bike Route

Multi Use Trail Connections

School Zone - 30km/h 8am - 5pm



PLAN YOUR ROUTE TO MARIGOLD ELEMENTARY



500 metres is about a 5 minute walk

Important: The Capital Regional District (CRD) does not warrant or represent that the information herein is free from errors or omissions, nor does it warrant the safety or suitability of any route, trail, road or pathway depicted or otherwise described herein. This information is provided for general information purposes on the condition that the (CRD) will not be liable for any loss, damage, costs, or expense whatsoever incurred by any person or entity using or otherwise relying upon it. The use of this document by any person or entity is entirely at their sole risk.

KEEP ROLLING WITH 'NEXT STEPS'

By design, the RSR initiative's focus on the 6 E approach, aims to build capacity within partners to fulfill the action plan items and further enable and inspire active travel mode choice. Recognizing that many of the school partners (administration, teachers, PAC, parents and students) move on to new schools. 'Next Steps' aim to facilitate the hand-off to the new school community over time, so they can continue to foster Marigold Elementary's active travel culture, using the 6 E's.

Keep Rolling with Next Steps:

Shifting Gears...

As the RSR initiative with your school concluded in Summer 2021. Paper and [digital](#) copies of the final report and resources will be provided to the school and local government, including a large poster size map for the school to display. CRD staff are available to present the final report to the new PAC in Fall 2021.

Taking the Next Steps...

The school and the local government should continue to implement the **Action Plan** (Appendix B). Suggested actions to be completed or considered by the various partners identified. Each new school year the School Administration and PAC should review the "Kiss & Go" sites and "Walk and Wheel for 5" sites and routes to ensure they are meeting the needs of the school families in a changing urban environment. **Promote the "Plan Your Route to Marigold Elementary" brochure and activity - update as needed.**

Gaining Momentum...

We are always updating the [6 E's of Active School Travel - Online Resources for School Communities](#) activities, resources and key messages to continue to foster an active travel culture. Try a "Walk and Wheel for 5" site and route. Identify members of the PAC that can lead active travel initiatives!



PARTNER KEY CONTACTS & LINKS TO RESOURCES

- District of Saanich Engineering engineering@saanich.ca
- CRD RSR regionalplanning@crd.bc.ca - 250.360.3195
- [District of Saanich Active Transportation Plan](#) & [CRD Pedestrian and Cyclist Master Plan](#)
- [CRD Bike Map](#)
- [GoByBike-Greater Victoria](#) (GoByBike Week, bike skills) and [iRide](#) (bike skills)

APPENDICES

Appendix A – Marigold Elementary - Plan Your Route Map to School and Activity

Appendix B – Marigold Elementary - Action Plan
District of Saanich Fall 2021 School Zone Improvements

Appendix C – Marigold Elementary Consultation Data and School Newsletters

Appendix D – 6 E's of Active School Travel - Online Resources for School Communities



Appendix A: Plan Your Route Map & Activity Marigold Elementary



Marigold Elementary

August 2021



READY STEP ROLL
ACTIVE SCHOOL TRAVEL PLANNING

⑤ Minute Walk & Wheel to School
UNSUPERVISED STUDENT DROP-OFF & PICK-UP SITE

KISS & GO • PARK & STROLL • MEET UP & GO

What is 'Walk & Wheel for 5' ?

Walk & Wheel for 5 is designed to support student safety by easing vehicle congestion at the school during arrival & dismissal times, while saving you time, building student confidence & enabling more families to be active.

These unsupervised sites are about 5 minutes (500 meters) from the school & may be used as **alternative drop-off & pick-up sites for households that drive, walk, wheel, bike or take public transit together.**

Use these sites to **Meet-Up & Go, Park & Stroll or simply Kiss & Go** on your way to school.

Supporting safety in numbers on common routes to school ultimately creates safer active travel conditions for everyone.

Your choice makes a difference

When you choose not to drive door-to-door you help reduce road congestion and support safety in numbers.

Reducing vehicle traffic during arrival & dismissal times makes school parking lots & streets safer for everyone.

Benefits of Active Travel

- Create safer school streets
- Spend time together outside
- Build confidence & capacity

"I love the Walking School Bus, because now my Mom gets to work **ON time!**"
- Grade 3 Student Rogers Elementary

"It's really tough to walk/wheel when both parents have full time jobs...
...If there was a walking or cycling group I would allow our kids to join it."
-Keating Elementary Parents

Questions?

Contact the PAC, Principal or CRD Regional and Strategic Planning
regionalplanning@crd.bc.ca



PLAN YOUR ROUTE TO

ÉCOLE MARIGOLD ELEMENTARY

Join in & help support more students and their families confidently choose active travel

PROUDLY SUPPORTED BY:



TIPS FOR FAMILIES

- ✓ Teach children to use crosswalks, sidewalks & crossing guards when possible. If there are no sidewalks, walk on the opposite side of the street to watch for oncoming traffic.
- ✓ Build up confidence by practicing your skills together as a family on the weekend.
- ✓ Encourage kids to try new ways to travel (walk, bike, scooter etc.) to keep things fun!
- ✓ Invite neighbours & friends to join you along the way or meet up & go together part-way!
- ✓ Usually drive door-to-door? Try a 'Walk & Wheel for 5' site to reduce school traffic congestion & other benefits of active travel.

Walk & Wheel for 5 sites/routes - NO parking

Walk, Bike, Bus or Roll to Admirals Rd Cul-de-Sac, Wilkinson/Burnside Rd W & Esson/Portage Rd

Kiss & Go Maximum 2 minute stop at arrival/dismissal

Pedestrian Activated Crosswalk

Marked Crosswalk

Crossing Guard - 15 mins before & after school

Major Intersection with Signalized Crosswalk

Public Bus Stop closest to Marigold Elementary

Bicycle Rack

School Access Point

Sidewalk

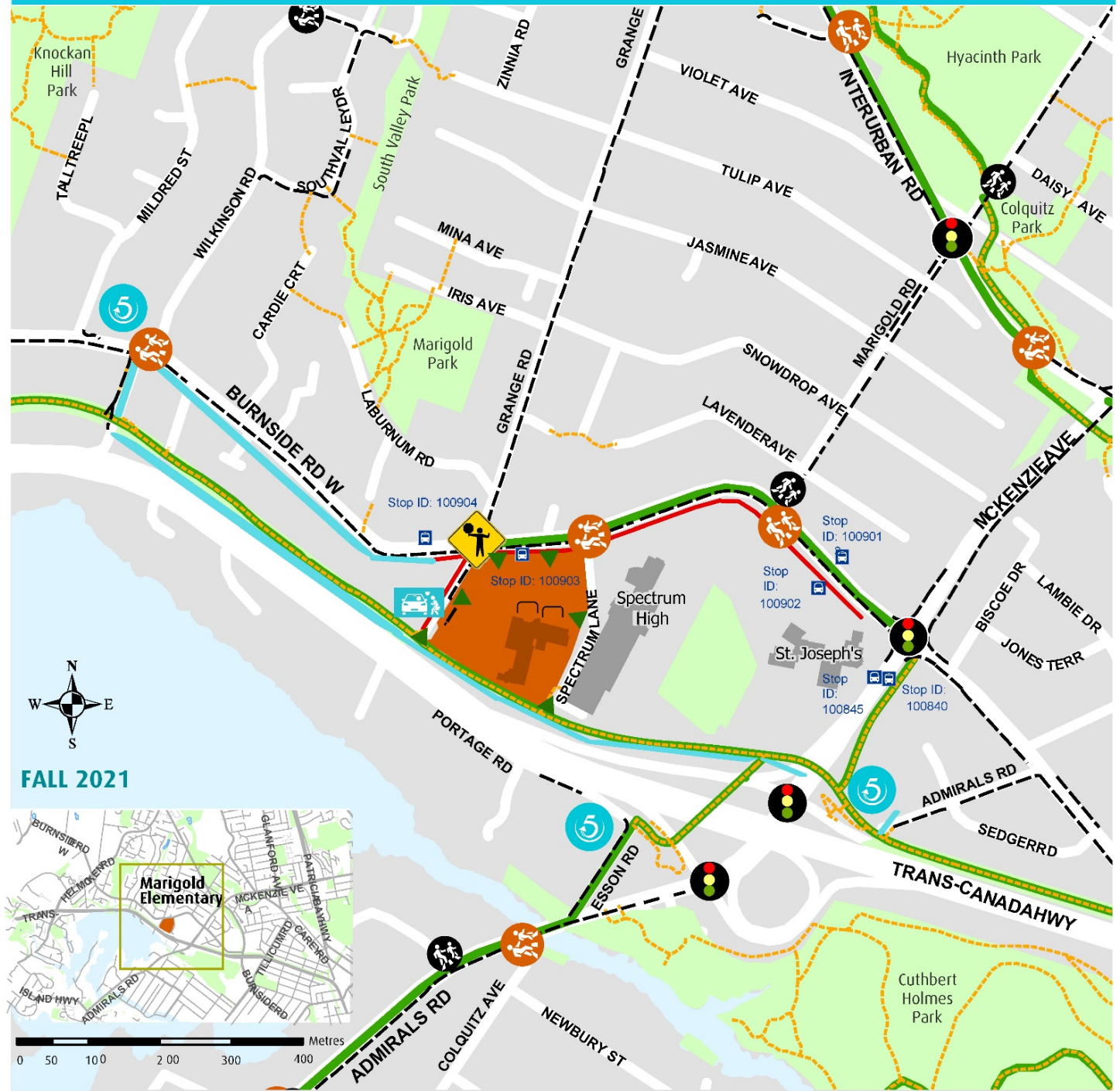
Bike Route

Multi Use Trail Connections

School Zone - 30km/h 8am - 5pm



PLAN YOUR ROUTE TO MARIGOLD ELEMENTARY



500 metres is about a 5 minute walk

PLAN YOUR ROUTE TO SCHOOL ACTIVITY

Families who **plan, prepare, and practice** walking and wheeling to school will help support children of all ages and abilities to learn safe and smart street-skills while gaining confidence, independence, and daily physical activity. On top of this, children will learn how easy, fun and sustainable using active travel for any trip can be when you plan, prepare and practice.

This activity aims to help families plan their route to their school by mapping out pedestrian and cyclist infrastructure, to show safe routes for walking and wheeling.

1. On a sheet of paper, record each family member’s morning & afternoon commute. Be sure to consider any additional stops along the way to their final destination.

Most mornings, _____ travels _____ by: _____
(family member name) (alone/with others to destination:) (mode of transportation)

Most afternoons, _____ travels _____ by: _____
(family member name) (alone/with others to destination:) (mode of transportation)

Most days, _____ would prefer to travel _____ by: _____
(family member name) (alone/with others to destination:) (mode of transportation)

2. Set family goals! Be sure to consider the age, ability, and independence of each child.

(Ideas: “Our child will be dropped off 5 minutes away from school so they can walk part way”, “We will practice biking as a family to school on weekends, so our child can bike alone”, “I will start a walking school bus so other kids don’t have to walk alone”)

1. _____
2. _____
3. _____

I would like to accomplish:

_____ by _____
(write your personal goal here) (date)

TRAVEL TIP: SKIP THE LINE!

‘Kiss and Go’ or ‘Park and Stroll’ at any of the “Walk & Wheel for 5 ” sites available at your school to avoid long lines and idling in the drop off loop line up.

3. Consider and make note of potential barriers in each family member’s goal.

i.e. Barrier “Timing – we can’t bike to school together in the morning, because I will arrive late.

Strategy Use school’s early supervision to allow our family to drop Sam off early, and then bike to work.

Barriers	Strategies for success

4. Use Google Maps to determine the most direct route to school for your family. Explore different routes and travel time estimates for your preferred travel mode.

Route option 1: _____

Route option 2: _____

5. Plan your family’s route! Use the attached map to compare suggested Google routes to your school’s local infrastructure. With your child, identify safe crossings, caution points, and landmarks to help prepare them to walk and wheel to school.

What walk and wheel infrastructure can you use on the way? (check all that apply)

Sidewalk

Pedestrian Overpass

Walking School Bus

Marked Crosswalk

Crossing Guard

Drive to 5 Parking Area

Signalized Crosswalk

Bike Lane

Pedestrian/Cyclist Trail

To travel my route, I will use:

(circle the modes you will use)



It will take about _____ minutes to travel _____.

(time in minutes)

(distance; m or km)

Plan, Prepare, Practice!

Appendix B:

Action Plan – Marigold Elementary



Marigold Elementary

August 2021

READY STEP ROLL
ACTIVE SCHOOL TRAVEL PLANNING

Location	Issues raised	Proposed Solutions	E's	Key Players	Timeline
School Property					
Spectrum Ln & Spectrum Ln Parking Lot Access	Staff/Students/Parents along with commuting and recreational cyclists use Spectrum Lane to get to Marigold & Spectrum schools and/or as a cut-through to the Goose, some use sidewalk others ride on Spectrum Ln.	Consider limiting vehicle access on Spectrum Land Add from high school parking lot entrance to schools (keep open only for veichal for those with mobility access needs, maintance and emergency) work with SD to add "sharrow" symbol on Specturm Lane with "share the road" signage. Add pedestrian stencils on blacktop sidewalk.	Education Engineering	School SD61	For Future Consideration
	Vehicle Congestion on Spectrum Ln and in school parking lots (Grange Rd) has caused Spectrum and Marigold to stagger start times; Marigold can use Spectrum Lane as drop off loop at specific times before it is only accessible by Spectrum HS Families. Spectrum Lane past the schools directly connects active travel users to the Goose.	3 schools stagger their start times to reduce congestion at the same time so that the Spectrum Ln can be used as a drop off loop. This year not able due to Covid19 Spectrum Ln drop off loop was closed to Marigold . Moving forward, consider keeping staggered start times between the 3 school, however consider keeping this drop off loop closed to drivers past high school parking lot entrance (with acceptance to those with mobility needs) and focus this lane as a bike/walk route. This would support use of the Lane from the schools to the Goose and existing bike racks at both Marigold and Specturm. SD could mark the pavement of Spectum Ln with a "sharrow" symbol Engage with Spectrum leadership to seek opportunities to coordinate student-supervised walking school bus * <i>Consider legal and safety regulations before proceeding</i>	Equity	School SD61	For Future Consideration
	Spectrum School bike racks are full!	Purchase (CRD) and install (SD61) bike rack. This is in addition to the new scooter rack at Marigold.	Encouragement	CRD-RSR SD61	Completed Spring 2021
	Field of Dreams turf improvement proposed for Spectrum lands, which will impact current traffic flow due to new parking lot	Work with School District staff to advocate for active transportation considerations. When designing access consider including pathway for pedestrian and cyclists + bike racks. Consider making access to Goose. Work with School District staff to advocate for active transportation considerations	Engineering	SD61 Saanich CRD-Parks	For Future Consideration
Burnside Rd W.					
School Zone on Burnside	Very long school zone; school zone signs on Burnside and side streets are not always visible and therefore harder to enforce.	Consider additional school zone signs so that drivers know they are still in the school zone. Reviewed all school zone signage to improve awareness of long zone - updating placement of signs and adding pavement makings as part of comprehensive plan for school zone enhancement	Engineering	Saanich	Fall 2021
	Consider revision of school zone into playground zone to lengthen enforceable hours	This location has been reviewed for changing to playground zone and it does not meet the requirements to be considered for a reduced speed limit playground zone.	Engineering	Saanich	Completed, N/A
	Poor compliance when not enforced	Install strategically placed bollards along centre line to create traffic calming and improve driver attentiveness The school zone along Burnside will be having 2 speed readers installed as part of a 3 yr pilot	Engineering	Saanich	Fall 2021
	Parking signs in front of the school are confusing resulting in non-use or non-compliance	Saanich to review the existing parking signs and update for consistency, compliance and readability as required	Engineering	Saanich	Fall 2021
Burnside @ Spectrum Ln Crossing (in front of school)	Vehicles accelerate to crossings and have poort stopping compliance	Installing of crosswalk centre delineators and/or additional crossing signs to eliminate ability for cars to pass while pedestrians are crossing	Engineering	Saanich	Fall 2021
	Crosswalk paint faded	Re-paint crosswalk markings	Engineering	Saanich	Fall 2021
	Lack of crossing guard	Direct students to use Crossing Guard at Burnside/Grange Rd	Equity	School CRD-RSR	Ongoing
Burnside @ Grange Crossing	Dangerous crossing even when crossing guard is on duty due to poor stopping compliance from drivers <i>*cars will maneuver around kids in crossing with</i>	Make additional safety signs and markings to bring additional awareness to the crosswalk At zebra crossing - consider adding bollards to center line and on start of bike lane	Engineering	Saanich CRD-RSR	Fall 2021
	Crosswalk light not very bright for daytime visibility	Investigate if bulb can be upgraded to brighter LED <i>Considered, RFBs currently meet SOPs</i>	Engineering	Saanich	Completed, N/A
	Paint wearing off of the raised curbs protecting the pathway	Re-paint raised curbs	Engineering	Saanich	Completed Dec 2020
	Vegetation on SW corner blocking sightline of drivers exiting lower Grange	Request vegetation maintenance at the corner of Grange/ Burnside	Engineering	Saanich	Completed
	bike lane begins/ends at crosswalk	Continue the bike lane past Grange Rd.	Engineering	Saanich	Long term, part of Saanich ATP
Burnside @ Marigold Crossing	Poor stopping compliance - cars try to pass when pedestrians are crossing	Consider installing traffic island delineators with school crossing signage	Engineering	Saanich	Fall 2021
	Kids Club use this crossing without supervision	Consider working with Greater Victoria Crossing Guard Association (GVCGA) to request funding for additional crossing guard. If they do not have the funds the GVCGA can request a review from Saanich to see if it meets the Saanich policy for crossing guard funding.	Encouragement	Saanich St. Joseph's School/SD61/PAC	Medium-Term
Burnside @ Cardie Court	safety at crossing - lots of jaywalking & connects well to South Valley Walkway	Consider creating a pedestrian activated pedestrian and bike activated crosswalk <i>*Considered, does not meet requirements due to other crossings in close proximity</i>	Engineering	Saanich	Completed, N/A

Timelines

Short-term: estimated completion 2021
Medium-term: estimated completion 2022-2024
Long term: estimated completion 4+ years

Location	Issues raised	Proposed Solutions	E's	Key Players	Timeline
Grange Rd					
Grange Rd (north of Burnside Rd W)	High vehicle traffic	Support safer AT routes through Walk & Wheel for 5 Brochure	Encouragement	CRD-RSR School/PAC	Ongoing
	Sidewalks on east side only - but pedestrians walk on west side shoulder (narrow)	Consider crosswalks spaced along Grange. These could include locations such as Jasmine and Snowdrop/ Iris. Consider sidewalk on west side of road - Long-term	Engineering	Saanich	Medium-Term Long-Term
	Sidewalks to be installed on part of Grange as part of the CRD-Wastewater project	CRD & Saanich in discussions	Engineering	CRD-Wastewater Project & Saanich	TBA
Lower Grange Rd (Burnside to Galloping Goose)	High use by drop-off loop (parents with younger kids are required to park and walk student to designated door)	designated as future AAA bike lane (wide ROW on west side - currently grass)	Engineering	Saanich	Long-Term
	Neighbourhood parking conflicts	Parent education for parking/stopping educate	Education	School/PAC, CRD-RSR	Short-Term + Ongoing
	Difficult left turn from Grange Rd onto Burnside Rd heading north	Consider making no left turns lower Grange on to Burnside	Engineering	Saanich	Long-Term
Grange Rd Parking Lot	People block driveways & cover up no parking/no stopping signs on street	Parent education for parking/stopping educate. Work with Marigold PAC to develop Drive to 5 handout to include in agenda/school handouts with the aim to lower number of parents using this as a drop off site.	Education	CRD-RSR School/PAC Saanich	Short-Term + Ongoing
Marigold Rd.					
School Zone	Signed heading south just before Lavender but not between Lavender and Burnside	add school zone sign between Lavender & Burnside on Grange heading south	Engineering	Saanich	Summer 2021
@ Lavender	Formal sidewalk begins after Lavender on east side of Marigold but no crosswalk across Lavender.	sidewalks on Marigold in the ATP as medium-term priority. AAA bike network is long-term - Review Lavender/Marigold intersection and install curb for improved access - Consider parking restrictions on approach to the intersection between lavender and snowdrop. *a lot of large vehicles parking on the boulevard blocking visibility - Consider formalizing crossings (side streets) by painting crosswalks and adjusting stop sign locations.	Engineering	Saanich	Medium-term
At Road Shoulders	Where shoulder/paved path/sidewalk is not protected with barrier or visual division (grass) vehicles park on shoulder block walkers/wheelers	Review parking and install small curbs near intersections to prevent blocked sight lines where problematic install small curb (similar to north of Jasmine)	Engineering	Saanich	Medium-term
@ Jasmine	Protected shoulder ends on west side of Marigold (at Jasmine)	Consider addition of Zebra crossing and sidewalk on the west side of Marigold	Engineering	Saanich	Medium-Term Long-term
Esson Rd					
Corner of Esson Rd & Portage Rd & Overpass Ramp	Highly used drop off site (approximately 40 Marigold students plus St. Josephs/Spectrum) with uncontrolled intersection, causes confusion between road users. Concerns of pedestrian safety if used as drop off site.	Review uncontrolled intersection of Esson/Portage, consider addition of stop signs, stop bars and marked crosswalks at this location (to be considered with Esson Rd sidewalks).	Engineering	Saanich	Long-Term or as funding permits
Corner of Esson Rd & Portage Rd & Overpass Ramp	Missing safety barrier on pedestrian overpass ramp, concerns of users exiting on steep, unstable gravel slope leading to roadway intersection	Install safety barrier at top of steep gravel slope between ramp & road	Engineering	MoTI	Review short-term
	Shared bike path/private residence driveway currently has no signage/barrier in place to prevent vehicles from using as turnaround	Consider re-install of local access only signage for vehicles (as per prior to Consider installing multi-use pathway signage for pedestrians and cyclists for wayfinding purposes	Engineering	Saanich	Long-Term
	Many families already use this site as drop-off / pick-up site. Good to encourage walking from here, but not to encourage as additional parking as current site configuration does not support. Safety concerns with individuals sheltering in area.	Safety in numbers. Making this a "Walk & Wheel for 5" site would see greater use of this area with greater number of students being dropped off/pick up by parents, leading to potential more use by near by residents currently not comfortable sending their students by themselves.	Engineering Encouragement	CRD-RSR School/PAC	Short-Term + Ongoing
Esson Rd	Sidewalks to be installed on Esson as part of the CRD-Wastewater project funding	CRD & Saanich in discussions	Engineering	CRD-Wastewater Project & Saanich	TBA
Esson Rd & Admirals Rd	Safety concerns with vehicles & crossings, currently only stop signs with no crosswalk	Consider reapplying paint to stop bar Consider installing marked parallel line crossing across Esson at intersection to connect to new Overpass sidewalk infrastructure	Engineering	Saanich	Long-Term

Location	Issues raised	Proposed Solutions	E's	Key Players	Timeline
Interurban Rd					
Bike Lane	Current Interurban bike lane is not AAA	Consider making Interurban Rd bike land AAA <i>Interurban Road is included in the ATP as a long-term priority. Some repairs and improvements may happen earlier but much of it is planned in the long term.</i>	Engineering	Saanich	Long-Term
Galloping Goose & Access points					
Galloping Goose	Graffiti on sound wall	Schools and community to continue to report tagging to MoTI MoTI/CRD-Parks/Saanich/SD61 interested in working together to move forward on art mural on Goose wall, external funds need to be obtained. Saanich has written MoTI about creating a mural on Nov 30, 2020. MoTI to consider adding polymer coating to prevent future tagging after or in lieu of mural. This is separate from the McKenzie Interchange Project budget, however due to tagging being a daily/weekly complaint from school MoTI acknowledges need to consider how to manage tagging and look for other funds.	Engineering	MOTI CRD-Parks Saanich Schools	TBA
	Speed of cyclists with no delineation (need middle line + need for walking space) Lights desired on the Goose	MoTI & CRD-Parks adding delineation middle line (yellow dashed) Consider adding pedestrian delineation on outer sides for walking where trail is wide enough (within school zone; this could reduce risk of conflict btwn pedestrians and cyclists) Consider adding pedestrian delineation on outer sides for walking where trail is wide enough (within school zone; this could reduce risk of conflict btwn pedestrians and cyclists) <i>CRD Board approved CRD Parks to conduct public engagement on widening and lighting sections of the Galloping Goose and Lochside trails in spring'21 . Defined project area includes the Goose from Selkirk Trestle to McKenzie/Grange Rd and the Lochside from Switch bridge to McKenzie.</i> School and community to participate in CRD Parks consultation (Spring'21) to advocate for areas adjacent to 3 schools be considered for pedestrian area to be painted on this already widened section.	Engineering	MoTI with CRD-Parks	Spring 2021 (middle line only)
Neighbourhoods Cut-Throughs					
Between Gange Rd, Marigold & Wilkinson Rd/Mildred St	How to encourage walkers/wheelers on Grange & Marigold : Opening up neighbourhood cut-through to keep kids off main roads and minimize #'s crossing at Grange & Burnside	Consider regaining right of way on the cut-through between Grange and Burnside as part of long-term ATP. Some geographic challenges with doing this but it could be considered as part of the long-term community plan.	Encouragement	Saanich	Long-Term
Road Crossings with Saanich Trails					
Colquitz Trail	Panama Flats Trail to Colquitz Trail to Galloping Goose is considered a safer alternative route to the school. This route requires to cross roads at: 1. Colquitz Trail crosses Marigold Rd at Hyacinth Park, 2. Colquitz Trail crosses Interurban (just south of Marigold Rd), 3. Colquitz Trail to Goose where it cross Interurban	Saanich will review and consider. Bylaw reference should be updated, once Council gives final reading to new Streets and Traffic Bylaw. (Dec 20') Consider adding "Elephant's Feet" trail crosswalk markings to these intersections: 1. Colquitz Trail crosses Marigold Rd at Hyacinth Park, 2. Colquitz Trail crosses Interurban (just south of Marigold Rd), 3. Colquitz Trail to Goose where it cross Interurban This follows in accordance to: Saanich Streets & Traffic Regulation Bylaw, 2002, No. 8382 - see section 8.16	Engineering	Saanich	1. Medium-term 2. Short-term 3. Short-term

Encouragement & Education Opportunities					
Activity	Opportunity	Proposed Actions	E's	Key Players	Timeline
Walk & Wheel for 5' sites Marigold Park Scouts Hall - 605 Marigold Rd Admirals Road North (Cul-de-sac) Welland Legacy Park Community Centre (Stancil Lane)	Congestion on Grange and Burnside Roads during peak school drop off and pick hours, causes student safety issues	All sites considered - Final Report and Plan Your Route Map & brochure for additional details on distances, routes and site information. Good potential 'Walk & Wheel for 5' sites: 1. Admirals Road North (Cul-de-sac) - good site potential as stairs lead directly to Goose 2. Esson/Portage at Pedestrian Overpass - high current use, due to desire not to have additional vehicles at this location promote as a site to walk/wheel/bike to as a family. Note: safety concerns sites as there is no current sidewalk on Esson or traffic controls or crosswalk at Esson/Portage intersection 3. Welland Legacy Park Community Centre (Stancil Lane) & Galloping Goose - site has minimal parking but good entry point for families learning to bike Sites that were NOT supported for "Walk & Wheel for 5' sites: Marigold Park - not supported - no crosswalks on Grange Scouts Hall - 605 Marigold Rd - may be closing	Education Encouragement Equity	CRD-RSR School/PAC Saanich PD Saanich	Fall 2021 onward
School Streets	Congestion on Grange and Burnside Roads during peak school drop off and pick hours, causes student safety issues	See CRD's "School Streets- A How To Toolkit" School administration and PAC could consider trying this idea via a limited time pilot to evaluate success to implement on a regular, longer or permanent timeframe. School Streets aim to address safety concerns within the loop and the sidewalk at the entrance and exit. This could be piloted a number of ways – once a week with "Walk & Wheel Wednesdays", in cooperation with a School Streets (one week or one month long) or to promote the use of the Walk and Wheel for 5 sites. Suggested location for School Streets: Grange adjacent to school property.	Education Encouragement Equity	CRD-RSR School/PAC Saanich PD Saanich	Fall 2021 for suggested pilot
Walking School Bus	Poor parent perception of crosswalk due to vehicle volumes and speeds on Grandview	Future consideration of PAC as interest grows. May seek support Saanich Police for the Walking School Bus Pilot	Encouragement	School/PAC	Future consideration
ICBC - Think of Me program	this program aims to address driver behavior	Distanced Programming available to be offered to students	Education Encouragement Equity	CRD-RSR ICBC School	Spring & Fall 2021
Crossing Guard Appreciation Month	This campaign involves students learning about the community role served by CGs and includes a school-wide celebration	Participate in CGAM	Encouragement	ICBC RSR-CRD PAC/School	Winter 2021
Bike Skills	Student Bike skills needed	RSR has scheduled 1 ride for Marigold gr 4 & 5's in spring '21. Requires volunteer PAC/parent so that there are sufficient number of adult supervisors.	Education Encouragement Equity	CRD-RSR PAC/School	May 2021 Repeat annually
Engage with Spectrum leadership	not possible with current Covid guidelines	Work with Spectrum to create leadership opportunities for students to support 'Walk & Wheel for 5' sites or Walking School Bus * Consider legal and safety regulations before proceeding	Encouragement	PAC/School	TBD

Burnside Rd W. School Zone Upgrades & Enhancements



As part of the Ready Step Roll initiative with Marigold Elementary, the District of Saanich will be making the following upgrades:

- The speed reader boards were supposed to be here in June 2021 but crews have been experiencing some technical issues. Do not have an anticipated date of arrival yet.
- The road markings will be done by a company coming out of Vancouver. Typically, they come to Saanich a couple times each summer to perform painting throughout the municipality. This project will be on their list for this Fall but I am not sure what month.
- Saanich crews will likely coordinate the signs and delineator installations with the road marking crew.
- The following works should be completed in the Fall of 2021.

FULL SCOPE

Burnside Rd W. School Zone - Upgrades & Enhancements



Approaching each school

Upon approach to each school in the zone, drivers will see the following devices (same pattern each time: 1 → 2 → 3) :

1. School Zone Sign



2. Delineators



3. School Zone Pavement Markings



APPROACH TO GRANGE

BEFORE (Current)



AFTER (CONCEPT)



The road markings at the start of the zone will be the School Zone symbol and School text. As you continue through the zone in either direction the next marking will be only the School text and the last marking will be the School Zone symbol. (Text and symbol, then text, then symbol)

Approaching Crossings

Upon approaching the crosswalks, drivers will see the following devices.



1. Centerline delineators on the centerline.



2. White delineators on the white lines

Note: The white delineators will only be installed on the white lines in locations that will not impede turning movements.



Approaching the crossings example 2



SPECTRUM CROSSING

BEFORE (Current)



AFTER (Concept)



The crossing signs at the Grange and Spectrum crossings will both be changing to school crossings.

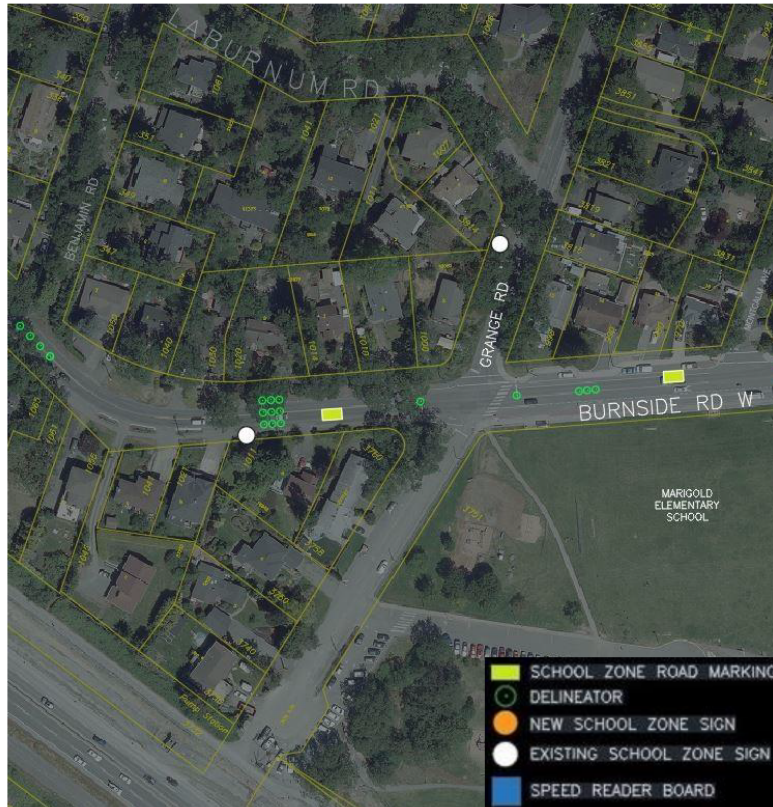
MARIGOLD CROSSING

BEFORE (Current)

AFTER (Concept)



Marigold



- School zone signs west of Grange, on Grange and on Marigold are all being slightly relocated to increase their visibility.
- Both of the existing school zone signs (white circles in this photo) in this photo will be moved slightly for better visibility.
- Removing the crosswalk warning signs (upon approach to the Spectrum crossing) & the hidden intersection sign (Westbound Burnside Lane approaching Montcalm) as they are not warranted (not pictured on this slide)



SPECTRUM

- Permanent speed reader boards will be installed along this straight stretch of road in the middle of the zone.



- The orange dots represent the 2 new school zone signs.

ST. JOSEPH'S

- Delineators will be installed on the NW corner of Marigold Rd. and Lavender Ave. This will create a more defined "curb" and increase safety for pedestrians.



Parking signs



- **Current parking signs** are quite cluttered, updates will help make the restrictions clear (photos to left)
- **Updates:**
Parking signs will be changed to 15 minutes Mon-Fri 7-3

FULL SCOPE



Appendix C:

Consultation Data & School Newsletters – Marigold Elementary



Marigold Elementary

August 2021

READY STEP ROLL
ACTIVE SCHOOL TRAVEL PLANNING

Consultation Data

Active School Travel Report

École Marigold Elementary 2020/21

Key consultation findings are presented in the *Active School Travel Report – École Marigold Elementary 2020/21*.

This appendix contains the data collected from the main sources of consultation as describe below. Please note that additional verification consultation was conducted as outlined in the main section of the report; this **qualitative data is not presented here**.

A. Hands Up Survey – Results

Collects in-class quantitative data from students by asking how students travelled to school and how they will be travelling home after school. Collected Monday October 19th – Friday Oct 23rd 2020. A second Hands Up Survey was conducted during the week of the Bike Skills, Monday May 17 – Thursday May 22 2021. The planned Spring 2021 “Hands Up Survey” was cancelled as schools were not in session due to Covid-19.

B. Online Baseline Parent Travel Survey – Data

Collects qualitative and quantitative data from parents to gain a deeper understanding of how students are travelling, as well as why they choose or may opt to change their travel mode. Conducted at the beginning of the program as baseline data Monday June 8 – Friday June 26th 2020.

C. Walkabout – Data

Collects qualitative data from public and professional stakeholders to determine infrastructure improvements. The route followed on the Walkabout is developed through the analysis of the Online Parent Travel Survey comments and results. The initial Marigold Walkabout with the School Principal, District of Saanich and the Ministry of Transportation and Infrastructure (MOTI) took place in the morning on August 31st 2020. A second walkabout took place on October 8th, 2020 at 8:15am with a limited number of invitees due to Covid-19. Attendees included Dwayne Doyle (Principal), Amanda Ming (PAC Contact), PAC representatives, SD61 operations staff, Saanich Engineering, Saanich Police, ICBC and Ready Step Roll staff.

A. Student Hands Up Survey: Monday October 19th – Friday Oct 23rd 2020

Total students trips counted: 900

Mode To/From	TO	FROM	Grand Total
Walk	26.82%	30.78%	28.71%
Walk part-way	5.36%	4.32%	4.86%
Bike	13.15%	11.56%	12.39%
Roll	1.92%	2.09%	2.00%
Drive to School Bus	0.00%	0.28%	0.13%
Public Transit	0.13%	0.14%	0.13%
Carpool	1.02%	0.56%	0.80%
Car	51.60%	50.28%	50.97%
Grand Total	100.00%	100.00%	100.00%

Mode by Grade	K	1	2	2-3	3	4-5	5	Grand Total
Walk	0.00%	26.23%	21.93%	15.32%	30.43%	20.78%	47.03%	28.71%
Walk part-way	0.00%	5.61%	0.00%	9.68%	0.00%	16.88%	2.58%	4.86%
Bike	15.22%	10.54%	27.19%	20.97%	4.35%	11.69%	10.85%	12.39%
Roll	0.00%	2.02%	1.75%	0.81%	4.35%	0.00%	2.58%	2.00%
Drive to School Bus	0.00%	0.00%	0.88%	0.00%	0.00%	0.00%	0.26%	0.13%
Public Transit	0.00%	0.00%	0.00%	0.00%	0.00%	1.30%	0.00%	0.13%
Carpool	0.00%	1.12%	0.00%	0.00%	0.00%	1.30%	1.29%	0.80%
Car	84.78%	54.48%	48.25%	53.23%	60.87%	48.05%	35.40%	50.97%
Grand Total	100.00%	100.00%	100.00%	100.00%	100.00%	100.00%	100.00%	100.00%

Mode by Day	Mon	Tues	Wed	Thurs	Fri	Grand Total
Walk	15.62%	16.42%	20.09%	21.71%	21.80%	19.08%
Walk part-way	7.59%	7.58%	10.04%	10.31%	11.24%	9.32%
Bike	8.24%	7.79%	8.71%	8.11%	9.44%	8.45%
Roll	2.60%	0.42%	0.89%	1.10%	0.45%	1.09%
Drive to School Bus	0.22%	0.00%	0.00%	0.00%	0.00%	0.04%
Public Transit	0.65%	0.21%	0.00%	0.22%	0.22%	0.26%
Carpool	3.04%	3.58%	3.13%	5.04%	3.60%	3.68%
Car	62.04%	64.00%	57.14%	53.51%	53.26%	58.07%
Grand Total	100.00%	100.00%	100.00%	100.00%	100.00%	100.00%

Grade 4 – 5 IRide Hands Up Survey Monday May 17th – Thursday May 20rd 2021

Total students trips counted: 271

Mode To/From	TO	FROM	Grand Total
Walk	16.86%	19.47%	18.18%
Walk part-way	5.88%	7.63%	6.77%
Bike	42.75%	48.47%	45.65%
Roll	3.14%	0.76%	1.93%
Drive to School Bus	0.78%	0.38%	0.58%
Public Transit	0.00%	0.76%	0.39%
Carpool	0.78%	0.76%	0.77%
Car	29.80%	21.76%	25.73%
Grand Total	100.00%	100.00%	100.00%

B. Parent Baseline School Travel Survey

Date conducted: Monday June 8th – Friday June 26th 2020

Total number of surveys received: 215

“How far is the distance between your house and the school?”

Distance	Percent of Students
Less than 0.5 km	13.82%
0.5 to 1.5 km	36.18%
1.6 to 3 km	27.63%
3.1 to 5 km	15.13%
Over 5 km	7.24%
Grand Total	100.0%

“How far away does the student live from school” (Sorted by travel mode)

Distance	Active Travel Users	Car Users	Grand Total
Less than 0.5 km	12.67%	1.33%	14.00%
0.5 to 1.5 km	26.00%	9.33%	35.33%
1.6 to 3 km	13.33%	14.67%	28.00%
3.1 to 5 km	4.00%	11.33%	15.33%
Grand Total	39.52%	60.48%	100.00%

“How does your child(ren) usually travel to and from school?”

Travel Mode	To School	From School
Walk	35.53%	35.53%
Walk part-way	5.26%	5.26%
Scooter/Skate/Wheelchair	3.29%	3.29%
Bicycle	11.18%	11.18%
Public Transit	1.32%	1.32%
Car	41.45%	41.45%
Carpool	0.66%	0.66%
	100.0%	100.0%

“How would you prefer to travel to and from school?”

Travel Mode	Percent of Students
Walk the whole way	37.09%
Walk part of the way (at least one entire block)	1.32%
Skateboard/scooter/wheelchair the whole way	2.65%
Bicycle	39.74%
School bus	9.27%
Public transit	0.66%
Car (just your family)	8.61%
Carpool (two or more families)	0.66%
	100.0%

Who usually accompanies your child to school or the bus stop?

Travel Mode	Total # of Students Using Mode	Adult	Adult & Other Students	Other Students	Alone
Bike	17	4	10	2	1
Car	63	44	18	1	
Carpool	2		1	1	
Public Transit	2		1	1	
School Bus	1				1
Scooter/Skate/Wheelchair	3	1		1	1
Walk	54	21	23	2	8
Walk Partway	11	5	4	1	1

Does your child own a suitable bike?

	Count of Suitable Bike Child
Yes	83.78%
No	16.22%
Grand Total	100.00%

Do you (the parent) own a suitable bike?

	Count of Suitable Bike Parent
Yes	88.08%
No	9.93%
No Response	1.99%
Grand Total	100.00%

“Would you allow your child to walk or bike to/from school?”

Row Labels	Count of Allow Walk/Bike
Yes	64.62%
No	26.15%
Haven't considered it	9.23%
Grand Total	100.00%

“Why do you currently drive to/from school?”

Reasons Driven To School	Count
Sum of ReasonDriven_Distance from home is too far	26
Sum of ReasonDriven_Out of school care	15
Sum of ReasonDriven_Convenience/time pressures	34
Sum of ReasonDriven_Health/physical disability limitations (self or child)	0
Sum of ReasonDriven_Inconvenient timing or location of school bus	6
Sum of ReasonDriven_Too young	16
Sum of ReasonDriven_Lack of interest in walking/cycling	3
Sum of ReasonDriven_Lack of equipment (bike)	0
Sum of ReasonDriven_Traffic safety concerns	27
Sum of ReasonDriven_Personal safety concerns	10
Sum of ReasonDriven_Weather	14

“What would encourage you to let your child(ren) walk to/from school?”

Would encourage walking if...	Count
Sum of EncourageWalk_Increased visibility/awareness of school bus stops	16
Sum of EncourageWalk_Additional marked crossings	42
Sum of EncourageWalk_Continuous sidewalks/trails	108
Sum of EncourageWalk_Increased visibility/awareness of school zone	36

Sum of EncourageWalk_Lower vehicle speeds	61
Sum of EncourageWalk_Lower vehicle traffic volumes	51
Sum of EncourageWalk_Additional pedestrian activated crosswalks	34
Sum of EncourageWalk_Crossing guard attending key school crosswalk	25
Sum of EncourageWalk_Increased lighting	17

“What would encourage you to let your child(ren) bike to/from school?”

Would encourage biking if...	Count
Sum of EncourageBike_Continuous bike facilities	61
Sum of EncourageBike_Additional street crossings for bikes	44
Sum of EncourageBike_Lower vehicle speeds	40
Sum of EncourageBike_Secure/covered bike parking at the school	40
Sum of EncourageBike_Lower vehicle traffic volumes	26
Sum of EncourageBike_Crossing guard attending key school crosswalk	20
Sum of EncourageBike_Increased universal accessibility infrastructure	11
Sum of EncourageBike_Increased visibility/awareness of school zone	23
Sum of EncourageBike_Increased lighting	8

“What would encourage you to let your child(ren) walk & wheel to/from school?”

I will encourage walk and wheel by	Count
Sum of WillEncourage_More appropriate routes for active travel were identified	80
Sum of WillEncourage_My child has clothing to walk or ride in the rain	30
Sum of WillEncourage_Bike skills course was offered at our school	65
Sum of WillEncourage_Road safety course was offered at our school	83
Sum of WillEncourage_A Walking/Cycling School Bus was running at our school	38
Sum of WillEncourage_Active transportation encouragement events or celebrations were happening at our school	15
Sum of WillEncourage_Bike and Gear in good working condition	26

“What motivates you to use active travel?”

What Motivates me to AT	Count
Sum of Motivates_Getting physical activity/exercise	139
Sum of Motivates_Feeling present and connected	77
Sum of Motivates_Spending time outside	117
Sum of Motivates_Environmental benefits	85
Sum of Motivates_Spending time with other people	53
Sum of Motivates_Setting a good example	82
Sum of Motivates_Not having to worry about parking	62
Sum of Motivates_More fun than driving	72
Sum of Motivates_Safer than driving	12
Sum of Motivates_Cheaper than driving	40
Sum of Motivates_More convenient than driving	35

Safety concerns cited regarding route to/from Marigold Elementary at top three locations (Edited for privacy)

- **Burnside W (47)** – Lack of connected sidewalks, comfort of sidewalks, lack of connected bike lanes, lack of visible school zone signage for drivers, vehicle speeds and volumes, lack of crossing opportunities outside of school zone, request for additional crossing guard
- **Grange (27)** – Lack of comfortable and connected sidewalks, poor sidewalk accessibility, lack of crossing opportunities, request for traffic controls at Burnside and Grange intersection, request for additional crossing guard, rolling stop signs, poor visibility due to road geometry

- **Galloping Goose (20)** – speed from other cyclists, lack of lighting, lack of delineation, personal safety concerns, safety at road intersections
- **Admirals/Craigflower (16)** – vehicle speeds/volumes leaving highway, poor stopping compliance at crosswalks, request to extend crossing guard hours
- **Marigold (15)** – **drivers block crosswalk during peak hours, lack of dedicated bike lane, lack of connected sidewalks, poor winter maintenance on Marigold, poor driver attentiveness, lack of crossing guard**
- **Interurban (13)** – comfort of bike lanes and sidewalks, request for additional separation between bike lane and roadway, challenging intersections to cross, vehicle speeds and volumes
- **Essex/Portage (8)** – lack of stop signs, lack of sidewalk, construction safety
- **Helmeken (5)** – intersection comfort, vehicle speeds and volumes
- **Carey (3)** -- Vehicle speeds and volumes, busy intersections
- **Cowper (3)** – vehicle speeds and volumes on narrow road
- **Tulip (3)** – Lack of sidewalks, use of road as cut-through for commuters
- **Tillicum (2)** – challenging to cross at Gorge on bike, lack of comfortable bike lanes
- **Baker (1)** – lack of crossing to Panama Flats
- **Craigflower (1)** – Vehicle speeds and volumes
- **Hastings (1)** – Request for additional lighting
- **Walter/Vincint/Bodega (1)** – lack of sidewalks on these routes
- **Wilkinson (1)** – bike lane safety

General comments regarding challenges and opportunities for active travel at Marigold: (Edited for privacy)

- Our son is only 6, so not really appropriate for him to be going alone and we also live a bit too far away on a hilly route.
- We do try to cycle as often as we can, and as often as time and weather allows.
- Would be nice to have better bike parking at the school.
- The construction is a bit annoying and the placement of the new pedestrian overpass is much less convenient for our school, but neither of these things can be fixed. Construction will end eventually.
- I would love to have my kids bike, but generally I am also in need of before school care which prevents us from biking to and from school. If we're doing a direct drop off to the school, I don't have the time to bike to work, nor does my office have appropriate facilities for bike storage/showers etc.
- Galloping Goose Trail is accessible to walk or bike to or from school
- Adequate bike and scooter parking would be good.
- For us, we enjoy biking and walking regularly, and would love to have a safe route to school, that didn't primarily travel along busy commuter corridors.
- Dedicated bike lanes on side streets, actual transit options
- places to park and store bikes safely
- parking near by the school (particularly on the west side of Cuthbert Holmes park would help
- Speed on the road and no clear sidewalk.
- Due to the distance we live from the school we would never consider allowing our child to walk/wheel to school. It would take over an hour and would involve crossing the highway. I think many students at Marigold live at a far distance from the school, preventing the option to walk/wheel. The school needs increased parking capacity to meet the needs of the families who attend this school.
- crossing the goose should be treated as a bike and pedestrian highway don't make so many stops - make the vehicles come to a full stop at all crossings and put in tunnel where needed at busy sections
- Too long to walk. Worried about her riding her bike on Craigflower and Admirals Road. Kids being able to ride on the sidewalk would make it much safer.
- To add to the previous answer, if a bike path were accessible I believe you would see more students riding their bikes. Unfortunately, there seems to not be enough space to even create a bike path or a larger walking path.
- With the Goose for much of the route access and safety is generally good. We happen to live a bit far for my child who is 7 to want to bike and it takes a bit longer than desired.
- More signage along Admirals reminding drivers of 50km/hr and school zone for Craigflower Elem. Often see speeders between No 1 hwy and Craigflower/Admirals intersection.
- I would prefer to walk or cycle away from breathing exhaust and with greenery to make the paths beautiful and enjoyable
- I am apprehensive about the changes happening at Watkiss and Burnside with the Handy Dart facility. Please consider putting tunnel under this intinter
- I commute by bike past my daughter's school but we have been limited by time pressures in having her bike with me, but my husband commutes to work by car and can drop her off. Often he will drop her with her bike and we commute home together, but we are limited by weather concerns as well.
- Major safety improvements are required in our area. Our child was nearly killed about 4 years ago trying to cross Interurban at a designated crossing point. The road is narrow, the speeds are too high, the volume of traffic is too much for the roadway and the site lines are poor.
- Many! But also thank you so much for addressing this and please help make things safer around here.
- "We have made it a priority to scoot and not drive to school this year. It has been challenging because my son is only in kindergarten. It is about 20 minutes each way and we usually have my 2 year old in the stroller as well. We have had to brave the highway construction which at times has made our walk dangerous (more the terrible drivers rushing through the construction zone, not so much the actual construction)
- I am hoping that the access to the new pedestrian overpass at the top of Esson makes a big difference for us.
- I am hoping that the access to the new pedestrian overpass at the top of Esson makes a big difference for us.
- Speed bumps and other speed controlling initiatives would help stop people using area as a short cut. Reduced traffic would make walking on street and poor sidewalks safer.
- Density of traffic makes it hard to get to work on time and do drop off
- School needs better storage options available for bicycles and scooters.
- Would like to see a playground zone rather than school zone to protect the kids after school hours and weekends and summer
- Just too far for a grade 4 student to walk/wheel almost 3.5km by herself along busy streets.
- I rode a school bus when I was in elementary school; I don't see why we can't use school buses here.
- It would be nice to have a sidewalk along Grange Rd to make it easier for kids to bike down the hill to school. Many early riders are afraid of the hill and there isn't a proper sidewalk to give them a greater sense of security.
- Bike riding or walking from our home to school on a safe route requires extra distance and a fair amount of time. We do it fairly regularly (at least one way) but rarely have time to do it both ways.
- For the most part the commute is great!
- Covered bike racks would be very helpful in our rainy weather
- We need sidewalks! Cars speed along Grange.
- We live near Grange which feeds three schools. The sidewalks are narrow and uneven. Improvements needs to be made to increase safety and accessibility.

- Burnside Rd, Longest school zone in BC, A lot of traffic in the mornings especially
- Pave and line the G.Goose.
- More Lighting on the G.Goose... especially at the school turnoffs... not just for Marigold but at CMS too.
- A sidewalk down Grange Road.
- Speed zone reminders - flashes if over 30km/hr"
- Galloping goose school speed signs would help with safety with the commuters who bike into town.
- The weather is the main reason we don't bike year round e.g. snow, cold, rain and that a trusted adult can't always accompany them. (Eldest has a younger brother with asthma. The cold rainy weather has a negative effect on his lungs.)
- We would not drive one and not the other so everyone bikes or everyone goes in the car. Also often it is an elderly grandparent that takes them to school as they are the before and after school care on the days that my husband (shift worker) is working. When my husband is off work and the weather is warmer they bike. I am normally at work already so can't take them to school.
- As far as I am aware there is no school bus option for the kids at Marigold. This might not be very desirable anyway because of covid 19 concerns.
- Biking for the majority of the time works well, especially since a good chunk of the Goose was paved.
- We walk the other portion.
- My children walk on the galloping goose trail part of the way. It would be safer for them to walk on the road since there are speed limits. With the increased amount of electric bikes on the goose people fly by my kids and the school faster than they would drive by a school.
- Place speed bumps near the school and along Grange Road to slow down traffic
- More visibility as school zone. Speed indicator boards and look at commuters using Burnside, grange and tulip as shortcuts.
- I would like to feel safe accessing the Goose with my 5 and 8 year old from where we live.
- Has been challenging during McKenzie interchange construction - will be glad when that is done.
- We need a speed sign on the curve near 1040 Burnside and a sidewalk on the same side so kids can get to school safely.
- Having a school bus pick up and drop off my child would be handy.
- No bike lanes safe or sidewalks on roads
- Students that live far from the school should have the option to ride a school bus for safety.
- We need to redo Burnside with protected bike facilities.
- As a 50/50 split household we don't have the same travel needs as other students at marigold. Both households drive the student due to being 5km+. Marigold is between both homes. I do believe other local students of marigold would benefit from sidewalks for their travel to and from school.
- My concern is the poor parking/drop off/pick up design at the school.
- It's hectic on Grange Road and I worry about my child crossing the street.

C. School Neighbourhood Walkabouts

Walkabout 1 (Before school start up): September 31st, 2020 (9:00-10:00 am)

Participants (4): Natalie Bandringa (CRD), Colby Heddon (CRD), Lauren Hermansson (Saanich), Kelsey Mclaggan (Saanich), Shawn Haley (MoTI), & Dwayne Doyle (Principal)

Walkabout 2 (After school start up): October 8th, 2020 (8:15-10:15 am)

Participants (7): Natalie Bandringa (CRD), Jay Douillard (CRD), Corey Volk (Saanich Police), Colleen Woodger (ICBC), David Williams (Saanich), Lauren Hermanssen (Saanich), Shawn Haley (MOTI) Dwayne Doyle (Principal) and Aaron Foster (SD61) Amanda Ming (PAC), Malia Allen (PAC)

School Properties	Issues Identified	Potential Solutions	Key Players
Spectrum Ln	cyclists cut-through to Goose & students to 2 schools - not sure to bike on sidewalk or lane/road This road way into the school will be expanding next near to be wide enough for fire lane new access to 2 new daycare buildings in Spring/Fall 2021) + 6 new staff parking spots must be created onsite + X# of new parents dropping off kids to daycare	When fire access upgrade happens on Spectrum Ln, consider making AAA bike route on Spectrum Lane to Goose	SD MOTI CRD-Parks Saanich CRD-RSR SD61
	Congestion has caused Spectrum and Marigold to stagger start times with lots of worked well. Marigold could use Spectrum Lane as drop off loop at specific times then HS could use	3 schools stagger their start times to reduce congestion at the same time - this year not able due to Covid19 (start again when possible) Engage with Spectrum leadership to seek opportunities for involvement	SD & school CRD- RSR
	high school bike racks are full!	purchase and install more bike racks for HS	CRD-RSR
internal SD parking lots	high congestion at start and end of school times	Re-start staggered start times - post Covid	
		Re-start primary drop off and use of spectrum loop - post Covid	
SD parking lot at end of Grange	high congestion at start and end of school times People block driveways & cover up no parking/ no stopping signs on street	Engage with Spectrum leadership to seek opportunities for involvement	
		Re-start staggered start times - post Covid	Saanich School CRD-RSR
		Re-start primary drop off and use of spectrum loop - post Covid Engage with Spectrum leadership to seek opportunities for involvement	
SD61 lands - Field between High School & St. Joseph's School (directly across from Marigold Rd).	Back field to next 2 year to become an indoor ice rink & front field (along Grange) to be a turf field - need new driveway into this site?	When designing access consider including pathway for pedestrian and cyclists + bike racks. Consider making access to Goose.	
Burnside Rd W.			
School Zone on Burnside	Very long school zone	Consider making 3 separate school zones so that drivers know they are in a school zone	Saanich
	Start SZ earlier on Burnside east of Grange	Consider making SZ start earlier on Burnside East of Grange	
	When drivers are turning onto Burnside (within the school zone) from some side streets they may not see a school zone sign within that 1st block - thus school zone not enforceable	Review all school zone signage to ensure awareness when turning into school zone from various side streets	

	Poor compliance when not enforced	Install strategically placed bollards along centre line to create traffic calming and improve driver attentiveness	
		Install strategically placed bollards along centre line to create traffic calming and improve driver attentiveness	
		Marigold is receiving 2 speed readers as part of a 3 yr pilot (to be install Fall 2020)	
	SZ is 1km with only 2.5 signs = to 30% less than minimum	Review all school zone signage to improve awareness of long zone (some are not placed in effective locations) + consider vertical high vis strips on SZ signs + SZ box painted on road)	
	interest in making the "school zone" a "playground zone" so that the time is extended and is for everyday not just school days	does not quality for "playground signage"	
	too many various no parking sign in front of school	Saanich consider reviewing # and messaging on signs on Burnside in front of school	
Burnside @ Spectrum Ln Crossing (in front of school)	Vehicles accelerate to crossings and will "gap N go" when possible	Install traffic island delineators/bollards (consider pencil motif)	
	crosswalk paint faded	re-paint crosswalk (consider school pencil motif)	
	no crossing guard	Install traffic island delineators with school crossing signage or bollards (consider pencil motif)	
Burnside @ Grange Crossing	Dangerous crossing even when crossing guard is on duty	assess additional locations for SZ signs	Saanich CRD-RSR
	Cars do not always stop and will try to pass when pedestrians are crossing - vehicles accelerate to crossings and will "gap N go" when possible.	At zebra crossing - consider adding bollards to center line and on start of bike lane	
	Crosswalk light not very bright for daytime visibility	Investigate if bulb can be upgraded to brighter LED	Saanich
	Paint wearing off of the raised curbs protecting the pathway	Re-paint raised curbs	Saanich
	Vegetation on SW corner blocking sightline of drivers exiting lower Grange	Vegetation maintenance	Saanich
	bike lane begins/ends at crosswalk		
Burnside @ Marigold Crossing	Cars do not always stop and will try to pass when pedestrians are crossing - Vehicles accelerate to crossings and will "gap N go" when possible	Consider installing traffic island delineators with school crossing signage assess additional locations for SZ signs	Saanich
	Kids Club use this crossing without supervision		School
Burnside @ Cardie Court	safety at crossing - lots of jaywalking & connects well to South Valley Walkway	Consider creating a pedestrian activated pedestrian and bike activated crosswalk	Saanich
Neighbourhoods between Gange Rd, Marigold & Wilkinson Rd/Mildred St			
	How to have less walkers/wheelers on Grange & Marigold : Opening up neighbourhood cut-through to keep kids off main roads and minimize #'s crossing at Grange & Burnside	link all together as walk/wheel pathways so kids could cross at main crosswalk on Burnside in front of Marigold Montcalm Ave to Montclam Ave / Lavender Ave to Lavender Ave	Saanich CRD-RSR
		Link all together as walk/wheel pathways so kids could cross at main crosswalk on Burnside East of Grange - link Benjamin Rd path to Burnside (enabling all kids East/north East of South Valley Park to use this corridor through South Valley Park & Marigold Park) Need to add new crosswalk on Burnside at end of Benjamin Rd cut-through - MAY BE TOO CLOSE TO BEND ON BURNSIDE	Saanich CRD-RSR
Grange Rd			
Grange Rd (north of Burnside Rd W)	high vehicle traffic		
	high pedestrian with sidewalks on east side only - but pedestrians walk on west side shoulder (narrow)	consider additional sites for crosswalks to allow pedestrians to move to sidewalk side	Saanich

Lower Grange to Goose (drop-off area and access to Goose)	high use by drop-off loop (parents with younger kids are required to park and walk student to designated door) neighbourhood conflict parking/drop-off loop dangerous left turn off lower Grange onto Burnside to head west	designated as future AAA bike lane (wide ROW on west side - currently grass) consider reconfiguring Saanich and School property parking area at end of Grange consider making no left turns lower Grange on to Burnside (to head west)	Saanich SD CRD-RSR
Marigold Rd.			
School Zone	signed heading south just before Lavender but not between Lavender and Burnside	add school zone sign between Lavender & Burnside on Grange heading south	Saanich
@ Lavender	formal sidewalk begins after Lavender on east side of Marigold but no crosswalk across Lavender.	Consider addition: parallel line or zebra crosswalk, boulevard, curb extension, delineators - something to ensure adequate visibility at intersection, prohibit vehicles from skirting around any sour of line formed by left turning vehicles & provide safe pace to walk	Saanich
shoulder/path	Where shoulder/paved path/sidewalk is not protected with barrier or visual division (grass) vehicles park on shoulder block walkers/wheelers	where problematic install small curb (similar to north of Jasmine)	
@ Jasmine	protected shoulder ends on west side of Marigold	Consider addition of zebra crosswalk	Saanich
Gallopig Goose & access points			
Access Points off Grange (Saanich) & Spectrum Ln (SD 61)	Cyclist speeds High schoolers smoking narrow entrance/exit points with high bike and pedestrian use at start and end of school	Pedestrian and Cyclist delineation needed along asphalt -- wide trail with no direction for users *interest in creating art mural to visually slow down users Moti is painting sound wall with special polymer for easy clean up Add CRD no smoking / clean air signs at Goose entrances; consider adding pedestrian only entrance/exit at both points (this would also allow kids to walk on path at back of school through wooded area)	MOTI CRD-Parks Saanich SD61 CRD-RSR
Gallopig Goose	graffiti on sound wall, speed of cyclists no delineation (need middle line + need for walking space) lights needed on goose	Work with Moti/CRD/SD61 to create art mural on Goose wall; consider adding delineation for middle line + walking where trail is wide enough (within school zone this could assist with slowing cyclists down)	MOTI CRD-Parks Saanich CRD-RSR
Pedestrian Overpass & parking on south side (@ Essson Rd/Portage Rd)	High use by students of all 3 schools Neighbourhood conflict with parking/drop-off Essson Rd/Portage Rd 40 + students currently use over pass + lots of interest to use south side as a D to 5 site	South side great D-5 site if parking/drop-off could be resolved @ Essson Rd/Portage Rd	MOTI CRD-Parks Saanich CRD-RSR
Marigold Rd	Lack of dual lane sidewalks Lack of marked crossings, poor vehicle stopping compliance	Think of me education to direct students to safe spaces for AT Long term AT plan - (15 yr) improve sidewalk infrastructure; create AAA network on Marigold Review parking signs and install strategic bollards near intersections to prevent blocked sight lines Review Lavender/Marigold intersection and install curb for improved access	Saanich CRD-RSR
Essson Rd			
	Overpass currently has approx. 40 Marigold students using, plus additional high school and St. Josph's students		
	Potential Drive to 5 site - could have many more students using		
	Safety concerns with individuals sheltering under under overpass and in area.	Safety in numbers. Making this a Drive-to-5 would see greater use of this area with greater number of students being dropped off/pick up by parents, leading to potential more use by near by residents currently not comfortable sending their students by themselves.	

Crossing at Esson Rd & Portage Rd	Safety concerns with vehicles & crossings, currently only stop signs with no crosswalk	? Has this been fixed with current works?	MoTI Saanich
Crossing at Esson Rd & Admiral Rd	Safety concerns with vehicles & crossings, currently only stop signs with no crosswalk	? Has this been fixed with current works?	MoTI Saanich
Interurban Rd			
Bike Lane	Current Interurban bike lane is not AAA	Consider making Interurban Rd bike land AAA	Saanich
Road Crossings with Saanich Trails			
Colquitz Trail	Panama Flats Trail to Colquitz Trail to Galloping Goose is considered a safer alternative route to the school. This route requires to cross roads at: 1. Colquitz Trail crosses Marigold Rd at Hyacinth Park, 2. Colquitz Trail crosses Interurban (just south of Marigold Rd, 3. Colquitz Trail to Goose where it cross Interurban	Consider adding "Elephant's Feet" trail crosswalk markings to these intersections: 1. Colquitz Trail crosses Marigold Rd at Hyacinth Park, 2. Colquitz Trail crosses Interurban (just south of Marigold Rd, 3. Colquitz Trail to Goose where it cross Interurban This follows in accordance to: Saanich Streets & Traffic Regulation Bylaw, 2002, No. 8382 - see section 8.16	Saanich
Encouragement & Education Opportunities			
Potential Drive to 5 Sites or Walking School Bus			
Corner of Esson Rd & Portage Rd & Overpass Ramp	would be excellent D-to-5 site if safety & parking concerns were address	could implement this D-to-5 site as a: Kiss & Go, Park & Go or Walking School Bus - could be highly used	RSR-CRD PAC/School Police
Marigold Park	currently used - but walking route from Park leads to East side of Grange which as no sidewalk & narrow shoulder - with no crossing point until bottom at Burnside	Look for/ consider need changes to make it a safer route from Marigold Park to School - could be a highly used to work better as a D-to-5 site &/or Walking School Bus	Police RSR-CRD PAC/School Police
Other ideas:			
ICBC - Think of Me program	this program aims to address driver behavior	will schedule for K-3 at Marigold School (if Covid allows or under a new way of delivery_	CRD-RSR ICBC School
Promote/recruit parents as part of ICBC speed reader volunteer program work with ICBC on rolls, stopping for pedestrians, sharing the road	Existing ICBC program	Connect interested PAC volunteers with ICBC	ICBC RSR-CRD PAC/School
Work with Spectrum to create leadership opportunities for students to support D-to-5 sites or Walking School Bus	not possible with current Covid guidelines	Set up to when possible & have as ongoing program	RSR-CRD PAC/School
Work with Moti/CRD/SD61 to create art mural on Goose wall	Current graffiti, speeds of commuters & volume of students at AM/PM bell. MoTI plans to cover the wall at this location with anti-graffiti paint	Work with MoTI & look for grant opportunities with/via all partners	MoTI Saanich School/SD 61 PAC
Bike Skills	bike skills needed	RSR has scheduled 1 ride for Marigold gr 4 & 5's in spring'21. Requires volunteer PAC/parent so that there are sufficient number of adult supervisors.	CRD-RSR PAC/School

Active School Travel Planning

Fall 2020 Update - École Marigold Elementary

École Marigold Elementary 2020-21

The Capital Regional District, District of Saanich, BC Ministry of Transportation and Infrastructure (MoTI), and École Marigold Elementary are working together through the **Ready Step Roll program** to identify barriers and solutions so more families can walk or wheel (bike, skateboard, wheelchair etc.) to/from school.

This program partnership focuses on infrastructure upgrades, encouragement and education opportunities for safer and more doable active travel for families.



School Community Consultation Highlights

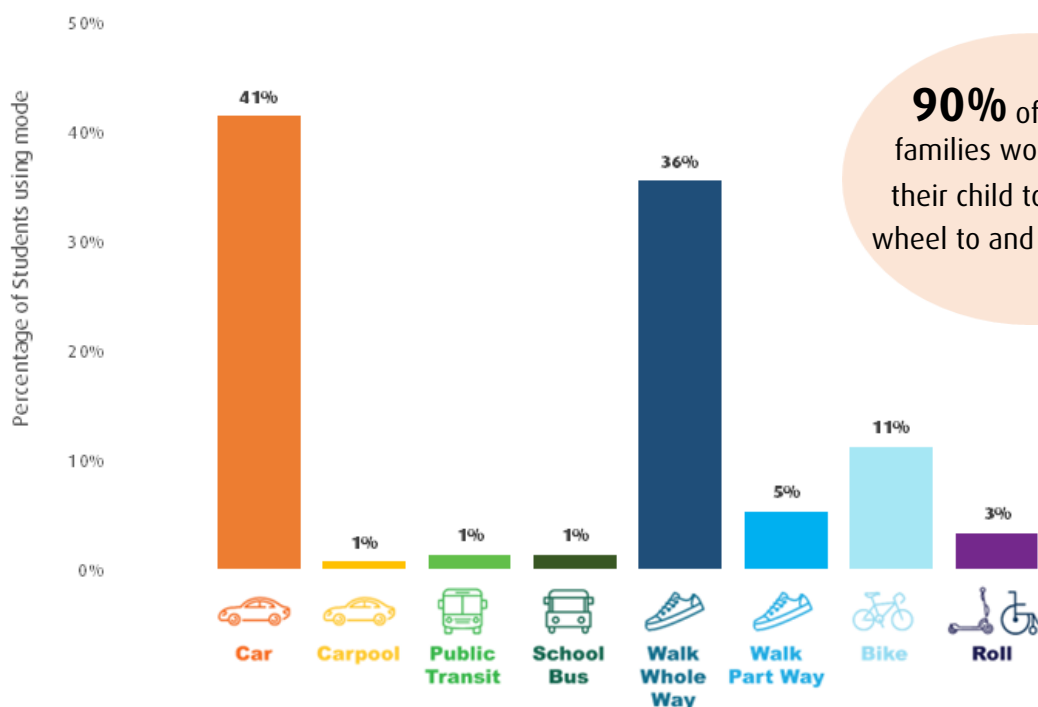
- ✓ **June 2020:** 215 families completed the Baseline School Travel Survey.
- ✓ **August - October 2020:** School-Neighbourhood Walkabouts to be attended by CRD, MoTI, Saanich and ICBC staff, Marigold PAC and parent representatives.

Data and insights from the survey and walkabout will help identify and prioritize:

1. Improvements to infrastructure in the school neighbourhood and/or on the school grounds;
2. Encouragement and education opportunities specifically appropriate for Marigold families.



How do Marigold students usually travel to/from school?



90% of surveyed families would **prefer** their child to walk and wheel to and from school



Want to get involved or share your ideas?

We want to hear from you!
Contact your PAC or email:
Natalie Bandringa,
Program Coordinator,
regionalplanning@crd.bc.ca

Keep Kids Moving this Fall!



GoByBike Week 2020

September 28th to October 4th

Everyone is invited to join whether riding to school, to do an errand, or just for fun!

Register and create a team with your class or make your own family team. Don't forget to log your trips to win... at the end of the week, one lucky class in Greater Victoria will win a set (x25) of fun bike bells and reflective slap bands!

Ways to Participate

[Register or Join a Team](#)

[Visit a Celebration Station](#)

[Listen to a Bike Skills Webinar](#)

[Try your local Neighbourhood Ride](#)

[Complete the Sticker Challenge](#)

**WALK & WHEEL TO
SCHOOL WEEK**
October 5-9, 2020

Walk & Wheel to School Week is free kick-start campaign held annually during the first week of October, working with schools to celebrate, educate and encourage students and their families to use and learn about the benefits of active school travel.

Need ideas? Check out the **2020 Guidebook** for tips and ideas to help keep kids walking and wheeling all winter long.

What's Next for Ready Step Roll at Marigold?

From the data collected during from the Baseline School Travel Survey and Walkabouts, a list of key locations and active travel concerns was developed.

After an initial site visit in August, Ready Step Roll partners will meet with PAC representatives on Thursday, October 8th, 2020 during morning drop off to walk the local school streets and investigate concerns and potential solutions heard from families.

To prioritize improvements and create positive change at Marigold Elementary, an Action Plan will be developed this winter, based on the 6 E's Approach to Active School Travel Planning. In the meantime, the program will work with staff and parents to support active travel at our school.

The Capital Regional District, District of Saanich, Ministry of Transportation and Infrastructure and Marigold Elementary are working together to help more families walk and wheel to and from school!

This partnership identifies active travel barriers for Marigold Elementary families and potential infrastructure upgrades, in addition to education and encouragement opportunities for more doable, safe active school travel.

What's happening at Marigold ?

In October

- ✓ Ready Step Roll partners joined together to do a walkabout around the School Neighbourhood
- ✓ Students took part in a Hands Up Survey (*see below*)

In November

- ✓ Ready Step Roll began draft action planning
- ✓ Ready Step Roll presented at virtual PAC meeting

In December

- ✓ Ready Step Roll met with the District of Saanich to confirm engineering actions
 - Marigold's Action Plan will be shared with the PAC in January/February 2021

Watch for our **NEW SCOOTER RACK** at the front of the school in 2021!

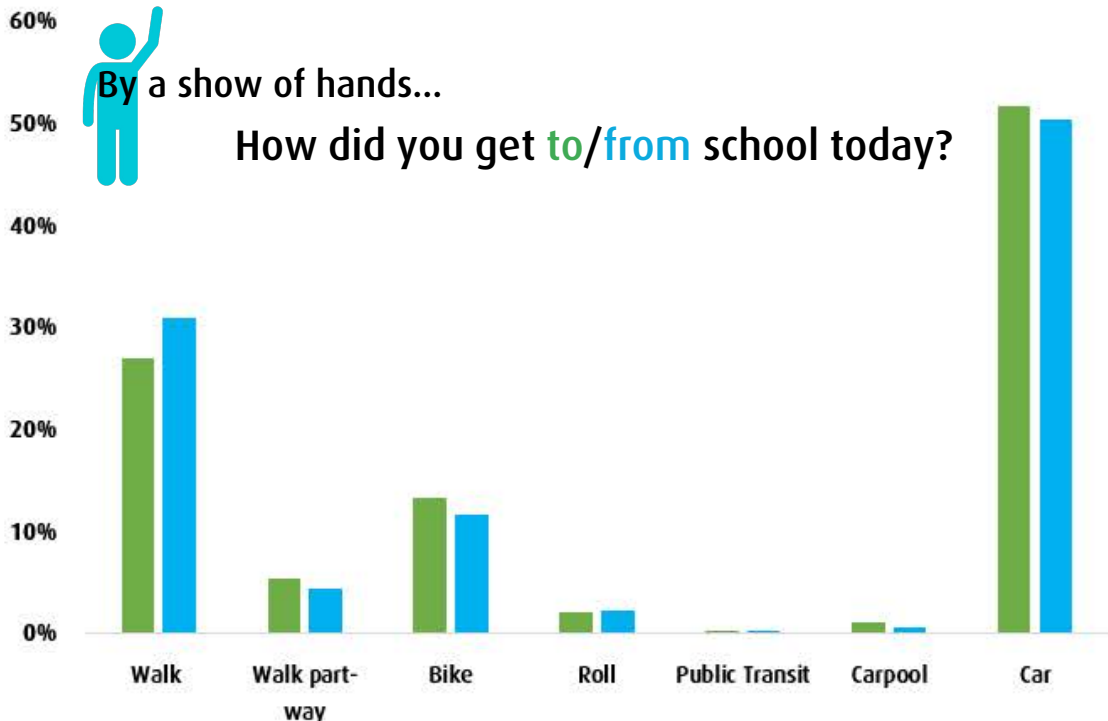


Psst.... Did you Hear?

215 families participated in the June Baseline School Travel Survey, helping Saanich engineers justify and prioritize active travel improvements near Marigold!

As a thank you, Ready Step Roll has gifted us with a **BRAND NEW SCOOTER RACK** to help students who want to ride their scooters to and from school!

By a show of hands...
How did you get **to/from** school today?



Looking to learn more about Ready Step Roll?

Visit our web page at www.crd.bc.ca/ready

Have an idea?
Want to get involved?

Contact your PAC or email:

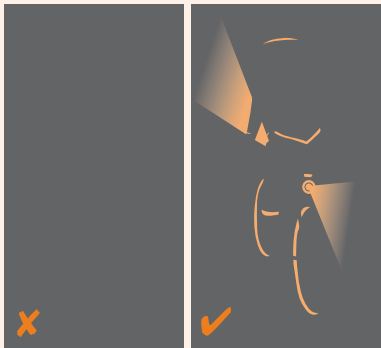
Natalie Bandringa,
Program Coordinator,
regionalplanning@crd.bc.ca

Walking and Wheeling in the winter is possible when families plan their route, prepare with the right gear and practice smart, seasonal street skills!

Help your child walk & wheel safely this winter:

BEING SEEN IS A BRIGHT IDEA!

- ✓ Carrying a light (or several) will help you see and be seen by others



- ✓ Bright, reflective rain gear will keep you warm, dry and visible in dark and rainy weather

If you are riding your bicycle, make sure it has:

- ✓ a front white light
- ✓ a rear red light

TAKE ACTION AGAINST DISTRACTION!

- ✓ Remove headphones so you can hear approaching cars that may be hard to see
- ✓ Avoid using devices while walking and wheeling

WALK THIS WAY!

- ✓ Walk on the inside edge of the sidewalk away from the road. **If there's no sidewalk - walk facing oncoming traffic**, so you can see approaching vehicles.
- ✓ Give yourself extra time to travel and remind children to watch for seasonal street hazards caused by rain, ice, & snow
- ✓ If your child is wheeling to school, remind your child to watch for slick terrain and to take corners slow

No reflective gear at home? Make your own!

Apply reflective tape in easy-to-see areas on your jacket for extra visibility!



- ✓ collar or hood
- ✓ sleeves or cuffs
- ✓ lower back

What's Next for Ready Step Roll at Marigold?



1. In January, the draft Action Plan for Marigold will be shared with Marigold staff and PAC
 - This plan lists out actions to be carried out by Ready Step Roll partners, based on their individual roles and jurisdictions
 - To develop this plan, Ready Step Roll follows the [6 E's approach - learn more here](#)



2. In January, Drive to 5 sites for Marigold Elementary will be shared with families to help students being driven to/from school get the benefits of walking and wheeling part-way
 - Learn more about ["Drive to 5" here](#)

This year Marigold students, staff and PAC members partnered with Ready Step Roll to enable and encourage more students and staff to walk & wheel to/from our school.

Our goal was to encourage active travel and learn how we can reduce congestion/improve road safety at our school using **the 6 E's Approach to Active School Travel Planning**.

Evaluation



Equity



Education



Encouragement



Engineering



Enforcement



Shifting Gears at Marigold

On May 18-20th, our Grade 4/5 students took part in the *iRide Bike Skills Course*.

During the week of the Bike Skills Course, our parking lot was empty but our bike racks were full! Ahead of upcoming infrastructure improvements, Marigold families have shown that we can make a positive collective impact on our school's streets simply by **shifting our individual travel behaviours to include more walking & wheeling where possible**.



LET'S MAKE THIS OUR NEW NORMAL!

In October 20' and May 21', we asked Grade 4-5 students in Div. 1, 2 & 3 to raise their hands to show how they got to and from school that day. Look how we did!

Crossing Guard Appreciation Month

In February, a number of our classes participated in creating thank you cards

for our awesome crossing guards who help us cross Burnside Rd W! The cards were gifted along with a coffee mug and gift card courtesy of ICBC. We are excited for the upcoming construction that will improve the visibility of our school zone as well as pedestrian comfort and accessibility at crosswalks.



BICYCLE



CAR & CARPOOL



WALK & ROLL

	BICYCLE	CAR & CARPOOL	WALK & ROLL	# OF TRIPS
OCT 20'	60	219	262	
MAY 21' (BIKE SKILLS)	236	140	141	
CHANGE IN # OF TRIPS	+176	-79	-121	

Enabling & encouraging students to Walk & Wheel



✓ **Burnside Rd W will have bollards installed** strategically to prevent drivers from passing at crosswalks in the school zone.

✓ **Pavement markings to improve school zone visibility** will be added at multiple locations along Burnside Rd W along with **two speed reader boards**



Approach to Grange Rd Before



Approach to Grange Rd After Summer '21



✓ **The Plan Your Route to Marigold Map Activity** encourages families to find their best route to school or try a new one!



✓ **We have a NEW scooter rack at Marigold!** Scooters can be easier to ride than bikes and are often less expensive, allowing students with varying skill sets and financial capacities to ride!



A BIG shout out & thank you to our partners!

Principal Dwayne Doyle, Staff, Amanda & the PAC, all the Marigold Marmots, the District of Saanich, MoTI, ICBC, SD61 & IRide!



What happens when we enable & encourage students to Walk & Wheel from home or from 5 minutes away?



We help build student confidence & capability



Students become more self-reliant, helping families and household schedules



We create safer streets by reducing congestion before & after school



We support local climate action by lowering individual GHG emissions



Students arrive alert & ready to learn after a burst of activity



You can save time & money (& frustration!) by skipping school traffic line ups



Students see physical and mental health benefits



With siblings & neighbours no one has to travel alone, creating peer-to-peer connections in our community

Keep up the momentum this summer and watch for Marigold's full Action Plan in the final School Travel Report, available in Sept 2022!

Appendix D: 6 E's of Active School Travel Online Resources for School Communities



August 2021

THE 6 E'S APPROACH TO ACTIVE SCHOOL TRAVEL PLANNING



The 6 E's of Active School Travel Planning – Resources for School Communities is an [online resource](#) which provides schools with the ideas, tools and activities needed to build and support the ongoing internal capacity needed to continue a school-wide active travel culture.

The 6 E's Approach to Active Travel aims to be a comprehensive, integrated and sustainable strategy to build school-neighbourhoods that are walkable and wheelable for all ages and abilities, by mitigating and addressing barriers preventing accessible active travel.

Students, families, educators, and Active Travel School Leaders are encouraged to [access the resources online](#) through the [Ready Step Roll webpage](#) to support school community equity, education, and encouragement active travel initiatives, while complimenting evaluation, engineering, and enforcement actions facilitated by local government engineers, the CRD and community partners.

Visit our webpage to learn more about the [6 E's approach to active travel](#) with tips, tools and ideas to support active travel at your school!

6 E's of Active Travel

The 6 E's of active travel describes the multi-faceted approach used by Ready Step Roll to build capacity within school communities after they have completed the program. The resources below have been developed as part of the Ready Step Roll program, but all resources have been made available for public use in all regional school communities.

Education	Equity	Evaluation	Engineering	Enforcement	Encouragement
-----------	--------	------------	-------------	-------------	---------------

With the right training, students can walk and wheel to school more often while enjoying increased physical skill sets and self-confidence. School communities learn about active travel benefits and caution points through road and traffic safety education and bike skills courses, developed in partnership with police, ICBC, and local non-profit organizations.

- Road Safety Scavenger Hunt**- Keep your eyes peeled! This resource challenges families to find different infrastructure, traffic signs, special vehicles, and neighbours while you walk through your community. Use it to teach your child about traffic safety or to change up your daily walks.
- Move your Feet on the Street Challenge** - How many ways can you move on your street? We're challenging kids to travel their "home stretch" using as many different forms of active transportation as possible. Includes a warm up brainstorming activity, followed by hands-on learning and finally, thematic-podcasts to help kids wind down after moving.
- Ready Step Roll Bingo** - On your marks, get set, BINGO! Challenge family members to be the first player to complete a line on their bingo card while performing different strength building movements, exercises, and stretches to help stay active at home.
- Backyard Adventure Course** - Get creative and see how you can move through your homemade obstacle course! This resource includes ideas on how to transform common household objects and toys into different obstacles for kids to maneuver through in the driveway, backyard, or even the living room!
- Physical Literacy Resource List**- a growing master list containing links to websites with ideas and activities to help keep kids active while they develop personal physical literacy. This list will continue to be updated.
- ICBC Road Safety Resources for Teachers**

[Equity »](#)

6 E'S APPROACH TO ACTIVE SCHOOL TRAVEL PLANNING

The 6 E's approach to Active School Travel Planning aims to be a comprehensive and sustainable approach to making school-neighbourhoods more comfortable to walk and wheel, by identifying and addressing safety and social barriers to better support and enable Active Travel with confidence.



Equity

Ensure that the initiative is benefiting all demographic groups across the Capital Region, with particular attention to ensuring safe, healthy, and fair outcomes for all students of diverse family, cultural, socio-economic backgrounds, abilities and identities.



Evaluation

Collect data and user insights to better understand the school-neighbourhood context, to determine appropriate approaches, identify opportunities to improve the effectiveness of an approach for a given school community and monitor changes over time.



Engineering

Infrastructure upgrades to improve the comfort of walking and wheeling on streetscapes and built environments located within immediate school-neighbourhoods, on common/high-use routes, and on school property.



Enforcement

Crossing guards, school supervision and police working together to improve awareness and compliance of parking regulations, traffic laws, and personal safety with a focus on the immediate school-neighbourhood and on school property.



Education

Information and initiatives to improve perceptions of active travel to reduce conflicts between transportation modes and build the confidence and personal skills needed to safely and confidently walk or wheel to and from school.



Encouragement

Celebrate and promote walking and wheeling as easy, fun and inclusive ways to travel in our community, alone or with friends and family.