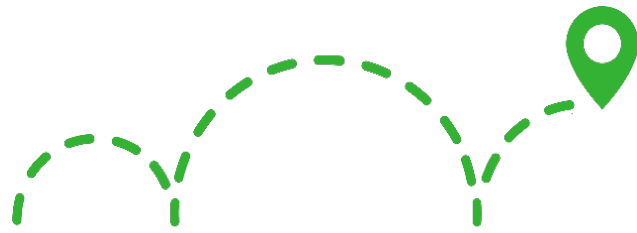




**Hillcrest  
Elementary  
Active School  
Travel Report  
2020-21**



**READY STEP ROLL**  
ACTIVE SCHOOL TRAVEL PLANNING

Facilitated by the CRD and published August 2021. Proudly supported by:



## Contents

Active School Travel Planning.....	4
Benefits of Active Travel to School.....	5
CRD’s Ready Step Roll Initiative.....	6
School Profile and Catchment Travel Context.....	8
6 E’s Approach to Active School Travel Planning.....	9
Equity.....	10
Evaluation.....	11
Consultation.....	12
School Travel Snapshot.....	13
Active School Travel Infrastrucutre Challenges.....	16
Active School Travel Oppourtunities.....	17
Action Plan Highlights.....	18
Engineering.....	19
Enforcement.....	20
Education.....	21
Encouragement.....	22
Equity.....	23
New Active Travel Initiatives at Hillcrest Elementary.....	24
Plan Your Route to Hillcrest Elementary and Map.....	27
Keep Rolling with ‘Next Steps’.....	29
Partner Key Contacts and Links to Resources.....	29
Appendices.....	30

## Appendices

Appendix A – Hillcrest Elementary – Plan Your Route to School Map and Activity

Appendix B – Hillcrest Elementary – Action Plan

Appendix C – Hillcrest Elementary Consultation Data and School Newsletters

Appendix D – 6 E’s of Active School Travel - Online Resources for School Communities

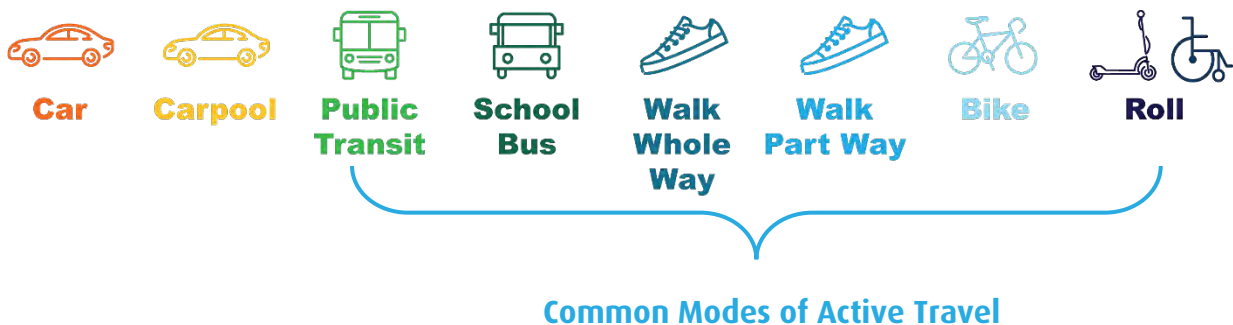
# ACTIVE SCHOOL TRAVEL PLANNING



Active School Travel Planning aims to increase rates of students walking and wheeling to/from school, using a school catchment/neighbourhood-based planning process. Walking and wheeling encompasses bikes, scooters, rollerblades, skateboards, using a wheelchair or riding the bus fully or part-way to and from school. Active School Travel Planning initiatives have already been successfully implemented in many communities across Canada and internationally. The [International Best Practices in Regional Planning for School Travel](#) (Ryerson University, Toronto, April 2016), looks at a number of case studies and key learnings from around the world.

The [Capital Regional District \(CRD\) Board Priorities](#) and [Corporate Plan](#) identifies *transportation* as a key regional priority and *envision[s] that residents have access to convenient, green and affordable multi-modal transportation systems that enhance community well-being*. To further this priority through behaviour change and infrastructure improvement at a foundational level, the CRD coordinates the active and safe routes to school planning initiative, known as the **Ready Step Roll – Active School Travel Planning initiative**.

**Active Travel (AT)** describes using any mode of transportation that relies on human-power to get to your destination - fully or part way.



## BENEFITS OF ACTIVE TRAVEL TO SCHOOL



**Active travel** describes using any form of transportation that relies on human-power to move such as riding a bike, a skateboard, rollerblades, a scooter, walking/using a wheelchair, or taking the bus.

Students who **walk and wheel** to and from school (fully or part way!) can:



Build individual confidence & capability



Arrive alert & ready to learn after a short burst of activity



Become more self-reliant, supporting families & household schedules



Create safer streets by reducing congestion before & after school



Improve their physical & mental health



Help save time & money by avoiding waiting in school traffic



Support safety in numbers & create connected communities



Participate in climate action by lowering community Green House Gas emissions

## CRD'S READY STEP ROLL INITIATIVE

### What is the Ready Step Roll initiative?



The Ready Step Roll (RSR) - Active School Travel Planning initiative works annually with five school communities and respective local government agencies to **encourage and enable more students to have the choice to use active travel to get to/from school**. Students who walk and wheel to/from their school or their bus stop arrive alert and ready to learn, while reducing regional GHG emissions to support safe and connected communities. The Ready Step Roll initiative is a comprehensive and sustainable approach to **making school-neighbourhoods more comfortable to walk and wheel**.

Working with partners, **RSR identifies and addresses safety and social barriers** to better support and enable active travel with confidence. The success of the initiative relies on **participatory partnerships** with provincial and local governments, school districts and schools (administration, Parent Advisory Councils [PACs] and students), along with the Insurance Corporation of British Columbia (ICBC), Island Health Authority, police forces, local businesses, and non-profits. Working together, the partners focus on creating solutions through **equity, evaluation, engineering, enforcement, education and encouragement**, known as our “6-E’s approach to active school travel planning”.

### What is the active school travel planning process?

Over the 18-month RSR initiative (approximately January through to the following June), the CRD works collaboratively with partners to:

1. **Identify** schools and local governments that are **committed to working** together.
2. **Facilitate** the creation and implementation of a school-catchment **Active School Travel Report** to further enable and inspire active transportation mode choice. During the initiative, local active travel safety concerns on common school routes are identified via school travel surveys, a School-Neighbourhood Walkabout, as well as a variety of consultation activities.
3. **Build capacity** of the school for ongoing initiatives that focus on **Equity, Evaluation, Engineering, Enforcement, Education and Encouragement (the 6 E’s)**.

## What is the goal of RSR?

Increase the rate of student and staff active travel trips to and from school by reducing barriers in active travel accessibility, safety, comfort and capacity.

## Who are the key partners?

- **CRD** – Facilitator and Project Manager of the RSR initiative.
- **District of Saanich** – Jurisdictional owner of municipal roads, road right-of-way and municipal lands, provides local knowledge on street level infrastructure, assists in development of Action Plan, evaluates and considers proposed solutions, supports/undertakes implementation and follow-ups with school regarding safety improvements post RSR initiative.
- **ICBC** – Offers expertise and partners with Ministry of Transportation and Infrastructure (MoTI) and local government for road safety improvements and provides educational resources for school communities.
- **School Administration and School District** – Provides insight into school sites and bussing, evaluates and considers implementation of proposed solutions on school property, and supports implementation of education and engagement initiatives during and post RSR initiative.
- **School Community (Parents/Guardians, PACs, and Students)** – Provides perspective on the school-neighbourhood, identifies opportunities for safer drop-off/pick-up, contributes to action planning, and supports education and encouragement initiatives during and post RSR initiative.

## What is the RSR timeline?

SET UP INITIATIVE		COLLECT DATA & ANALYZE						PLAN		IMPLEMENT*			EVALUATE		School Travel Planning Process Complete
School/Municipality Recruitment	Program Begins	Baseline & Hands-up Survey	Analysis & pre-walkabout with staff			Neighbourhood Walkabout		Develop Action Plan		Encouragement Education Equity Enforcement Engineering			Final Report Feedback & Follow-up		
DEC – JAN	APRIL	MAY	JUNE	JULY	AUG	SEPT	OCT	NOV	DEC	DEC – MAY			JUNE	SEPT	
<b>Introduce program to:</b> <ul style="list-style-type: none"> <li>• School principal &amp; administration</li> <li>• School teachers &amp; staff</li> <li>• Parent Advisory Committee</li> <li>• Municipal staff</li> <li>• School District staff</li> </ul>		<b>Identifies:</b> <ul style="list-style-type: none"> <li>• How students travel</li> <li>• Walking and cycling safety concerns</li> <li>• Potential improvements and actions</li> <li>• Favourite routes</li> </ul>						<b>In collaboration with:</b> <ul style="list-style-type: none"> <li>• School</li> <li>• Municipality</li> <li>• School District</li> <li>• Other partners</li> </ul>		<b>Coordination with partners could include:</b> <ul style="list-style-type: none"> <li>• Bike Skills course</li> <li>• Walking School Bus</li> <li>• Walk and Wheel for 5</li> <li>• Plan Your Route Map</li> </ul>			School Travel Plan completed Stakeholder feedback Stakeholder support to ensure capacity building		

# SCHOOL PROFILE & CATCHMENT TRAVEL CONTEXT



## Hillcrest Elementary School Profile

School District	School District 61
Local Government	District of Saanich
Catchment Areas	Gordon Head
Grades	K-5
2020 Enrollment	286 students
School-Based Active Travel Support	<ul style="list-style-type: none"> <li>➤ One crossing guard; outdoor supervision available at front and back of school from 8:30am until 2:45pm</li> <li>➤ Multiple bike racks</li> <li>➤ Active PAC</li> </ul>
New! RSR Active Travel Initiatives (ongoing)	<ul style="list-style-type: none"> <li>➤ <b>Four identified, unsupervised 'Walk &amp; Wheel for 5' sites and routes; see map on page 28</b></li> <li>➤ School yard supervision begins at 8:15am to encourage active travel</li> <li>➤ New and relocated bike racks added to school yard</li> <li>➤ Interest by the District of Saanich to pilot 'School Street' on Greenview Ave. in partnership with the school in 2021/22.</li> </ul>

**Hillcrest Elementary** is one of 27 elementary schools in School District 61, and one of 18 elementary schools located in the District of Saanich. The school is tucked away in the low density Gordon Head suburb, with main access for vehicles off Hillcrest Avenue and Grandview Avenue. As an established neighbourhood, Hillcrest's school area has pockets of residential roads connected by busy streets and is well connected by local cut-throughs with houses largely set back from the street. Though there is a lack of sidewalk connectivity in this area, many future District of Saanich plans will work to address the missing connectivity in this area outside of the RSR initiative.

From our baseline surveys, Hillcrest families demonstrated an interest in achieving higher Active Travel participation but cited missing sidewalk connectivity and negative intersection crossing perceptions as common barriers. As many local sidewalks will not be completed in the near future, the focus is to reduce local car volumes and increase active travel participation. This will help eliminate and reduce many of the perceived barriers for families at this school, as traffic is largely made up of Hillcrest families during drop-off and pick-up hours. As a result, current efforts will be put towards reducing vehicle volume through Active Travel mode shift.



## 6 E'S APPROACH TO ACTIVE SCHOOL TRAVEL PLANNING

The 6 E's approach to Active School Travel Planning aims to be a comprehensive and sustainable approach to making school-neighbourhoods more comfortable to walk and wheel, by identifying and addressing safety and social barriers to better support and enable Active Travel with confidence.



### Equity

Ensure that the initiative is benefiting all demographic groups across the Capital Region, with particular attention to ensuring safe, healthy, and fair outcomes for all students of diverse family, cultural, socio-economic backgrounds, abilities and identities.



### Evaluation

Collect data and user insights to better understand the school-neighbourhood context, to determine appropriate approaches, identify opportunities to improve the effectiveness of an approach for a given school community and monitor changes over time.



### Engineering

Infrastructure upgrades to improve the comfort of walking and wheeling on streetscapes and built environments located within immediate school-neighbourhoods, on common/high-use routes, and on school property.



### Enforcement

Crossing guards, school supervision and police working together to improve awareness and compliance of parking regulations, traffic laws, and personal safety with a focus on the immediate school-neighbourhood and on school property.



### Education

Information and initiatives to improve perceptions of active travel to reduce conflicts between transportation modes and build the confidence and personal skills needed to safely and confidently walk or wheel to and from school.



### Encouragement

Celebrate and promote walking and wheeling as easy, fun and inclusive ways to travel in our community, alone or with friends and family.



## EQUITY

Ensure that the initiative is benefiting all demographic groups across the region, with particular attention to ensuring safe, healthy, and fair outcomes for all students of diverse family, cultural, socio-economic backgrounds, abilities and identities.

### How does the RSR initiative integrate 'Equity' at a local government level?

- ✓ Works to consult with all relevant school and community/government partners by offering multiple engagement opportunities on a variety of platforms.
  - **In person:** Walkabout, PAC and principal meetings, mapping, engagement/celebration stations, Hands-Up surveying method.
  - **Virtual:** Baseline School Travel Survey, email/phone consultation, access to website resources, material sharing with initiative partners.

### How does the RSR initiative integrate 'Equity' at a school community level?

- ✓ Work with PACs to facilitate equity into all opportunities and ideas
  - **Educational:** Works with PAC representative to facilitate PAC volunteer coordination for active travel events (bike skills etc.).
  - **Financial:** Hosts equipment exchange station (bikes, helmets, rain gear) at PAC and after-school events, shares available bursary and grant opportunities, and highlights continuing safety efforts that work to support all students (crossing guard appreciation).
- ✓ Works with School Administration to address gaps in before and after supervision to support family and work schedules.
  - Propose "Walk & Wheel for 5", Walking School Bus or Bike Train initiatives.
  - Realignment of school ground supervision as needed.
- ✓ Works with School District Facilities and Transportation to address accessibility issues when travelling to/from school.
  - **Safe and accessible school sites:** Elimination of tripping hazards and enhancing wheelchair access at school access points, pedestrian visibility issues at school access points, considers safety and accessibility of active travel near school bus stops.



## EVALUATION

**Collect data and user insights to better understand the school-neighbourhood context, assess which approaches are appropriate, and identify opportunities to improve the approach and to monitor changes over time.**

To help better understand how students travel to and from school, why families make their travel choices, and what would encourage families to shift towards active travel modes, the initiative collects data through various means of formal and informal consultation. The CRD evaluates and uses the data and insights of the school community to facilitate development of the Action Plan with the local government, school and other participating community partners.

### Hands-Up Survey

- Week-long daily survey taken in-class held at the beginning, middle and end of the initiative, to understand how students typically travel to and from school. This survey may be used as a baseline throughout the initiative and in future years by the school to gauge change over time.

### Baseline School Travel Survey

- Online questionnaire answered by parents and guardians is a deeper dive into identifying current and preferred travel modes, specific barriers, safety concerns and suggestions to encourage families to shift towards using more active travel.

### School-Neighbourhood Walkabouts

- Build on the school survey data to get a better understanding of the challenges families have walking and wheeling to school. Participants work together to brainstorm engineering, education and encouragement solutions. This information is used to create the Action Plan to guide improvements.

### Personal Communications

- Meetings, email, phone conversations throughout the initiative with Principal, PAC and local government confirm collected data and facilitate the development of the Action Plan.

# CONSULTATION

## Hillcrest Elementary - School Consultation Summary



108 Baseline School Travel Surveys, representing 60% of students (June 2020)



719 Student trips recorded on Hands-Up surveys (October 2020)\*



In-School Encouragement & Engagement Activities

- Walk and Wheel to School Week (October 2020)
- Crossing Guard Appreciation (February 2021)
- Grade 4/5 Bike Skills (May 2021 – iRide)
- GoByBike Week (May/June 2021)
- ICBC Think of Me - K-3 Road Safety (May & Fall 2021)



- One pre-walkabout with staff (school, municipal and CRD – September 2020)
- One school neighbourhood walkabout (PAC, parents, school administration, municipal, SD61, ICBC and CRD staff, SaanichPD - October 2020)



Six principal & PAC meetings (2020-21)



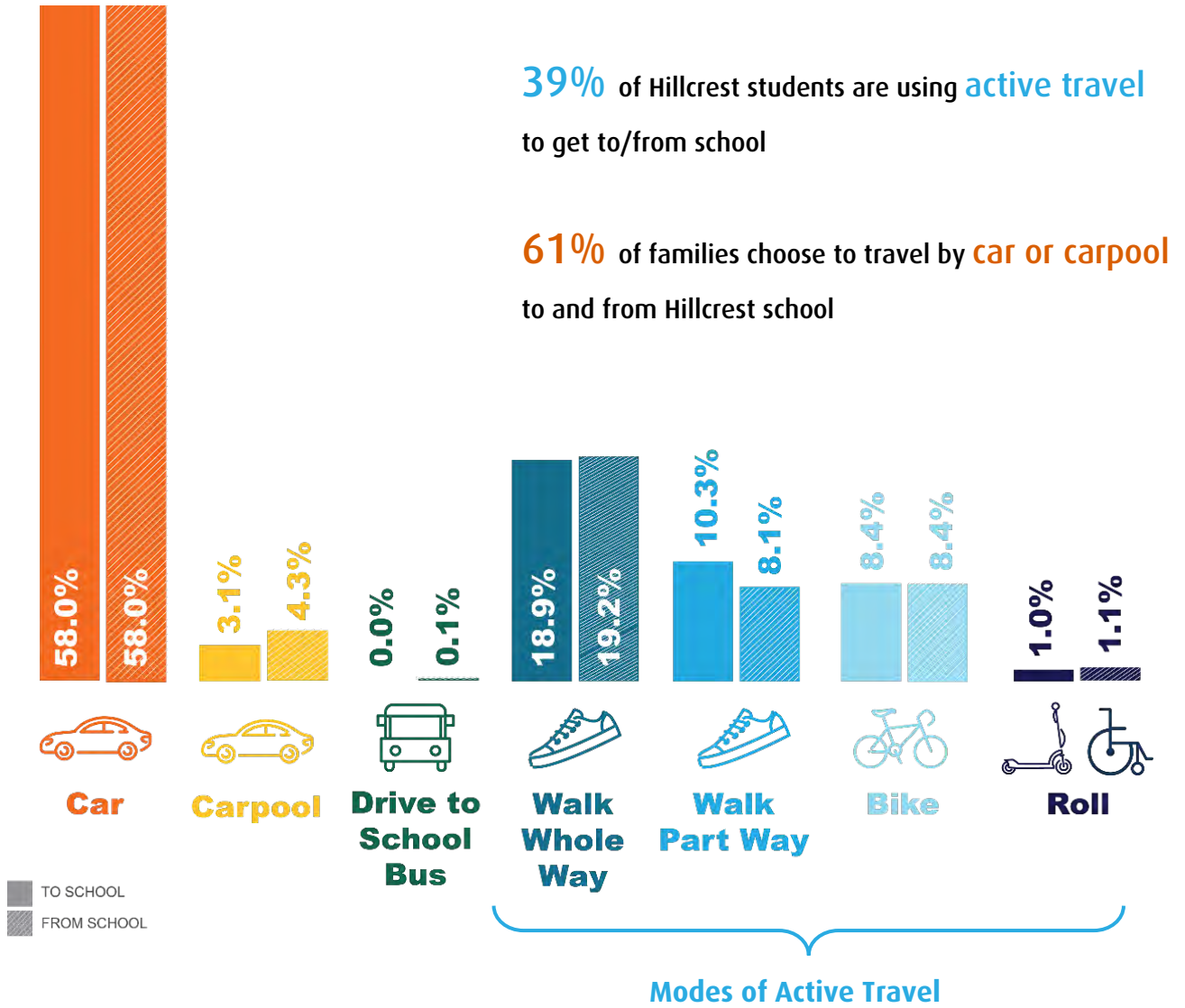
Numerous local government meetings, phone & email consultations focused on drafting the Action Plan (2020-21)

\* Recorded over 4 days due to Pro-D day.

# SCHOOL TRAVEL SNAPSHOT

Data was obtained from the on the 2020 Hillcrest Elementary Baseline School Travel Survey (online – parents and guardians) & \*Hands-Up Survey (October 2020 in-class – students).

## How did you get to and from school this week\*?

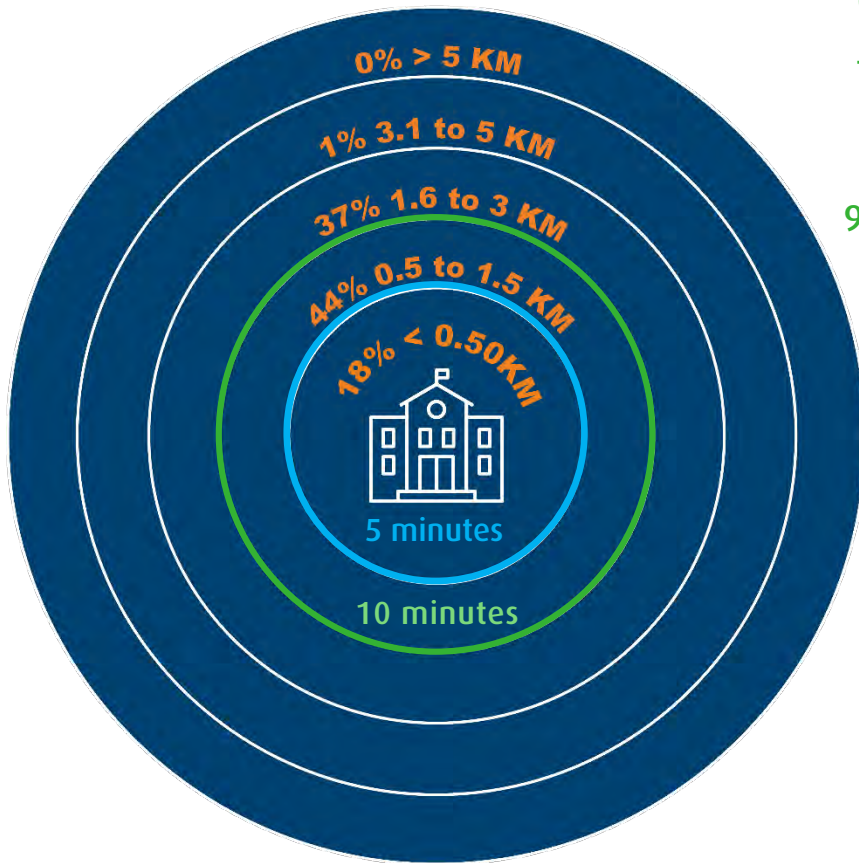


**TIGHT FOR TIME? TAG ALONG!**

Over **78%** of students using active travel to and from Hillcrest Elementary are accompanied by an adult.

Meet up with neighbours & try a 'Walk & Wheel for 5' site!

## How far do students live from Hillcrest Elementary?

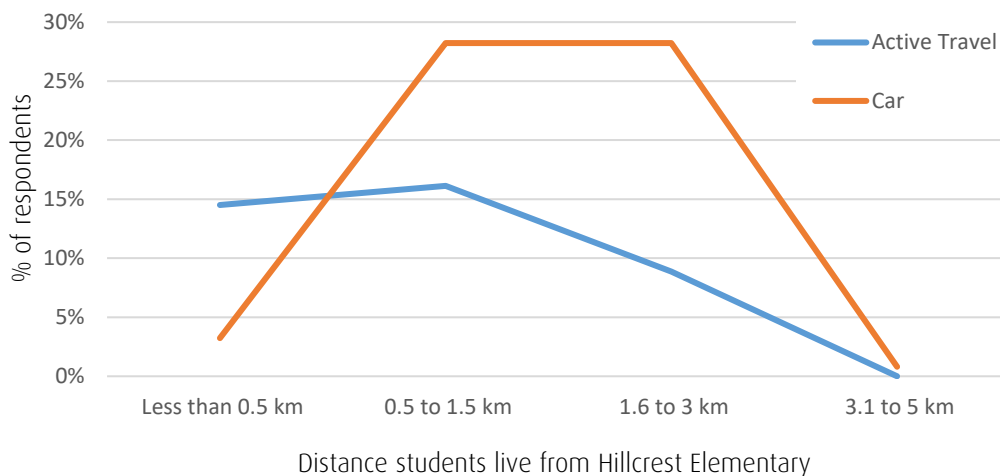


62% of surveyed families live less than 1.5km from school, which is about a 10-15 minute bike or walk.

99% of students live within 3km of Hillcrest school.



## How does distance impact travel choices at Hillcrest Elementary?



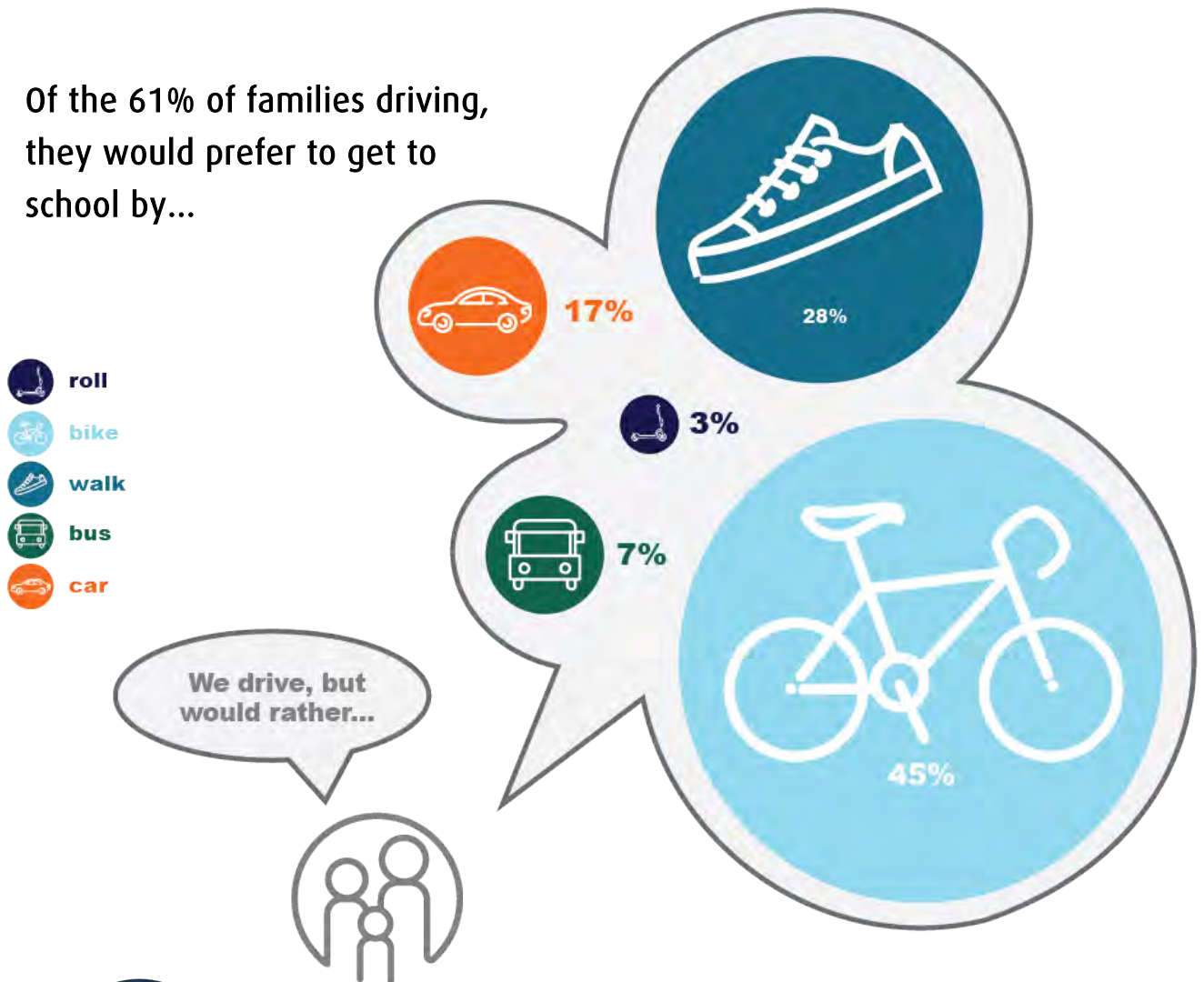
28% of students are driven to and from school, but live within 1.5km of Hillcrest.

That's equal to about 50 vehicles!

## How would you prefer your student to get to Hillcrest Elementary?

Of all Hillcrest families surveyed, **90%** of parents would prefer their child to use active transportation to travel to/from school, but currently **61%** usually drive.

Of the 61% of families driving, they would prefer to get to school by...



### HOW YOU CHOOSE TO MOVE MATTERS!

Every car off the road means more space for students to walk and wheel to school. If you can't choose active travel all the way, Walk & Wheel for 5 to support your school's safety and to give your student the benefits of active travel!



## ACTIVE SCHOOL TRAVEL INFRASTRUCTURE CHALLENGES

The following infrastructure challenges were identified through formal and informal consultation - listed in order of priority and proximity to school.

### School Yard Entrances, Parking Lots/Loops & Facilities

- Drop-off loop - very busy, back-up blocking sidewalk and street, reported and non-reported accidents, vehicles blocking accessible parking spot
- Front parking lot - very busy, cars parking on grass

### Greentree

- Lack of space for cyclists/pedestrians during peak hours due to vehicles
- High vehicle volume at arrival and dismissal with vehicles, arriving and parking early for pick-up, blocking and turning around in private driveways, parking in no parking zone
- Speed

### Hillcrest

- Discontinuous sidewalks/must walk on road
- Speed and vehicle stopping compliance
- Request for Crossing Guard

### Tyndall

- Discontinuous sidewalks
- Request for additional crosswalks
- Vehicle speed and volumes

### Grandview

- Vehicle speed & volumes
- Discontinuous sidewalks
- Vehicle stopping compliance at crosswalks
- Request for additional crosswalks

### Other streets with concerns include:

- Ferndale, Ash, Longview, Houlihan, San Juan, Torquay, Cedar Hill, Chartwell, Fairburn, Gordon Head Rd - all with requests for additional sidewalks and crosswalks, concerns about vehicle speed, pedestrian visibility, vehicles rolling stops
- Feltham - Cut-through accessibility for bike trailers
- Vantreight - Uncomfortable for novice cyclists



# ACTIVE SCHOOL TRAVEL OPPORTUNITIES

*Opportunities identified through formal and informal consultation.*



*\*For more details, see Action Plan (Appendix B)*

*\*\*For more resources, see Plan Your Route Resources (Appendix A), & 6 E's of Active School Travel - Online Resources for School Communities (Appendix D)*

## ACTION PLAN HIGHLIGHTS

One of the main deliverables of the Ready Step Roll Initiative is the **Action Plan** (see Appendix B). The Action Plan outlines possible solutions to higher priority active travel challenges and opportunities commonly raised during the consultation process. The suggested actions are subject to the respective jurisdictions for consideration, approval and required budgetary process.

The following sections highlight active travel challenges raised and possible solutions presented in the Action Plan through the lens of the 6 E's principles.

In the following 'Action Plan – Highlights', actions marked with:

- Completed at the time of this final report
- Not yet completed or may not have been committed yet
- Committed ongoing actions



## ENGINEERING

Infrastructure upgrades to improve the comfort of walking and wheeling on streetscapes and built environments located within immediate school-neighbourhoods, on common/high-use routes, and on school property.

### Active Travel Challenges Raised

Traffic, Speed, Volume for improved pedestrian visibility and space

*“Actions need to be taken to change driver behaviour and increase awareness of pedestrian usage of streets.”*

*“Cars driving too fast and not fully stopping at intersections. Please put in more speed humps”*

### Action Plan Key Messages and Solutions

District of Saanich

- Review school perimeter streets to install/update “school zone” or “school area” signage
- Review sidewalk condition & perform repairs as needed

Hillcrest Administration/SD61

- Consider speed bump at loop entrance
- Install stop sign at loop & parking lot exit

Visibility at Intersections, Crosswalks and Space to Walk or Bike

*“Greentree is clogged with vehicles. There is not enough room to accommodate travel in both directions and parking on each side.”*

District of Saanich

- Install raised crosswalk along Greentree to deter high vehicle speeds
- Review & update existing “no parking” & “no stopping” specifically at crosswalks & intersections to improve road user sight-lines – consider use of signs & flexible bollards

## ENFORCEMENT



**Crossing Guards, school supervision and police working together to improve awareness and compliance of parking regulations, traffic laws, and personal safety with a focus on the immediate school-neighbourhood and on school property.**

### Active Travel Challenges Raised

### Action Plan Key Messages and Solutions

#### School Entrance and Frontage Safety for Pedestrians

*"I think that if there was someone actually policing parents at pick up and drop off times, they would probably behave. Or parents should be ticketed for parking in the wrong areas. Unless there is some repercussions - their habits won't change."*

*"The amount of idling cars outside of the school. The width of Greentree means there's a constant battle between cyclists, pedestrians and cars."*

#### District of Saanich

- Request increased enforcement from Saanich Police during high volume traffic hours

#### School Administration

- Actively enforce of school loop & parking lot at arrival & dismissal times
- Crossing Guard Appreciation (annually February)
- ICBC's "Think of Me" in-class lesson (May'21)
- ICBC's "Think of Me Enforcement" (Sept'21)
- ICBC's "Think of Me" – annual programming

#### Limited use of cut-throughs by pedestrians and cyclists

*"It is nice to have the neighbourhood travel through pathways to shorten the walk to school. These are beneficial and do help to shorten the walk distance and time it takes to get there. Bushes do get a bit overgrown at times."*

#### District of Saanich

- Maintain vegetation on trails
- Request private property owners maintain vegetation

## EDUCATION



Change perceptions of active travel and support initiatives to improve safety, reduce conflicts between transportation modes, and build the confidence and skills needed to safely and confidently walk or wheel to and from school.

Active Travel Challenges Raised	Action Plan Key Messages and Solutions
<p><b>Need for Traffic Safety and Bike Skills</b></p> <p><i>"Kids biking is a huge opportunity to reduce school traffic congestion. Especially at the Elementary age, I feel there is a huge void for cycling confidence and competence."</i></p>	<p>School Administration/RSR initiative (CRD)</p> <ul style="list-style-type: none"> <li>☑ Host grade 4/5 bike skills (iRide May'21)</li> <li>➤ School/PAC to annually host bike skills with GoByBike or iRide</li> <li>☑ Partner with ICBC &amp; Police to deliver "Think of Me" Road Safety education for students K-3.</li> <li>➤ Deliver "Think of Me" annually (school initiative)</li> </ul>
<p><b>Identifying Safer Routes and Promoting Alternative Drop-off/Pick-up Areas</b></p> <p><i>"In Japan, schools group kids 5-10 or so according to the address and they walk together. They have a designated gathering spot and time. And oldest kid is assigned to be a leader and they form a line to go to school. If there an app to do it, it will be great."</i></p>	<p>RSR initiative (CRD)</p> <ul style="list-style-type: none"> <li>☑ Develop: <ul style="list-style-type: none"> <li>→ "Walk &amp; Wheel for 5" at various sites</li> <li>→ See "Plan Your Route Map/Brochure" (identifies "Walk &amp; Wheel for 5" sites/routes &amp; active travel infrastructure)</li> <li>→ Educational resources to support student physical literacy (see Appendix D)</li> </ul> </li> </ul> <p>School Administration &amp; PAC</p> <ul style="list-style-type: none"> <li>➤ Promote new resources to families to help them identify safe active travel infrastructure</li> <li>Promote "Walk &amp; Wheel for 5" sites</li> </ul>
<p><b>Need for Educational Resources for School Communities Post-Initiative</b></p> <p><i>Previous RSR schools have indicated a need for resources after the conclusion of the RSR initiative in order to build their capacity</i></p>	<p>RSR initiative (CRD)</p> <ul style="list-style-type: none"> <li>☑ Create the RSR "6 E's of Active School Travel - Online Resources for School Communities" which includes the Walk &amp; Wheel for 5 Guide, Walking School Bus Guide, School Streets Guide, and ICBC Road Safety and content for Principal Newsletters (see Appendix D)</li> </ul>



## ENCOURAGEMENT

Celebrate and promote walking and wheeling as easy, fun and inclusive ways to travel in our community, alone or with friends & family.

Active Travel Challenges Raised	Action Plan Key Messages and Solutions
<p>Limited infrastructure support</p> <p><i>“Desperately need more bike racks on the black top of the school.”</i></p> <p><i>“The crosswalk for kids coming from Hillcrest Ave needs a crossing guard.”</i></p> <p><i>“Kids biking to school is a huge opportunity for active transportation and to reduce school traffic congestion.”</i></p> <p><i>“Can schools and school communities do more programming, education, opportunities to help kids learn to ride bikes safely.”</i></p>	<p>RSR (CRD)</p> <ul style="list-style-type: none"> <li>☑ Purchase &amp; install new bicycle rack (2021)</li> </ul> <p>School Administration</p> <ul style="list-style-type: none"> <li>☑ With new raised crosswalk on Greentree in front of school – move crossing guard to corner of Hillcrest and Greentree</li> </ul> <p>School Administration/PAC</p> <ul style="list-style-type: none"> <li>➤ Take part in community celebrations and campaigns that promote active transportation/Continue to host school events that encourage healthy and active lifestyles: <ul style="list-style-type: none"> <li>- Walk &amp; Wheel to School Week</li> <li>- GoByBike Week</li> </ul> </li> <li>➤ Promote: <ul style="list-style-type: none"> <li>- Plan your Route map/brochure</li> <li>- “Walk &amp; Wheel for 5” sites</li> <li>- “6 E’s of Active School Travel - Online Resources for School Communities</li> </ul> </li> </ul>



## EQUITY

Ensure that the initiative is benefiting all demographic groups, with attention to ensuring safe, healthy, and fair outcomes for all students of diverse family, cultural, socio-economic backgrounds, abilities and identities.

Active Travel Challenges Raised	Action Plan Key Messages and Solutions
<p>Desire for crossing guards, pedestrian and cycling skills</p> <p><i>"I feel that kids cycling to and from school creates healthy families and more confidence and independent kids!"</i></p> <p><i>"Additional bike training for kids with disabilities would help to make it a safer option for our child. Helping them to learn safe road practices, signaling, looking both ways, etc."</i></p>	<p>School Administration/RSR initiative (CRD)</p> <ul style="list-style-type: none"> <li><input checked="" type="checkbox"/> Relocation of Crossing Guard to Greentree/Hillcrest</li> <li><input type="checkbox"/> School to seek additional funding for second crossing guard at Grandview/Ferndale</li> </ul> <p>RSR (CRD)</p> <ul style="list-style-type: none"> <li><input checked="" type="checkbox"/> Hosted iRide for grade 4/5, ensured that assisted bikes were provided and that students at all bike skill levels were included</li> <li><input checked="" type="checkbox"/> Worked with ICBC to host ICBC's "Think of Me" program (May &amp; Sept'21)</li> </ul>
<p>Identifying and promoting safer routes to school &amp; alternatives to drop-off/pick up at the school</p> <p><i>"Could there be a safe walk system? Where a pre-vetted volunteers take turns and walk a group of children."</i></p>	<p>RSR (CRD)</p> <ul style="list-style-type: none"> <li><input checked="" type="checkbox"/> Develop: <ul style="list-style-type: none"> <li>→ "Walk &amp; Wheel for 5" at various sites</li> <li>→ "Plan Your Route Map" (identifies active travel infrastructure along school routes)</li> <li>→ Educational resources to support student physical literacy</li> </ul> </li> </ul> <p>School Administration &amp; PAC</p> <ul style="list-style-type: none"> <li>➤ Promote new resources to families to help them identify safe active travel infrastructure along Hillcrest school routes</li> <li>➤ Promote "Walk &amp; Wheel for 5" sites</li> </ul>

## NEW ACTIVE TRAVEL INITIATIVES AT HILLCREST ELEMENTARY

In order to continue to support active travel to and from school, parents/guardians and school administration need to support each other, work together, and practise!

### Plan Your Route to Hillcrest Elementary

As identified on the “Plan Your Route to School Map”, Hillcrest school has adopted the following ongoing encouragement initiatives to support active travel. These school-specific resources are bundled in Appendix A. For more ideas see [6 E's of Active Travel – Online Resources for School Communities](#).

### Walk & Wheel for 5

These unsupervised sites and routes are about a five minute (500 meters) walk from the school and may be used as alternative meeting sites for families that drive\*, walk, wheel, bike or take public transit. The goals of “Walk & Wheel for 5” include easing vehicle congestion at the school, saving time, building student confidence, and enabling



more families to benefit from

using active travel to get to/from school. These sites have been selected as they are on common routes that encourage the use of pedestrian and cycling infrastructure (sidewalks, quiet streets, pedestrian activated crosswalks, multi-use trails, etc.).



### 5 How to use these sites

On your school’s “Plan Your Route to School” map and brochure these sites and routes are identified. Whether you drive\*, walk or wheel, use these sites to ‘Meet-Up & Go’, ‘Park & Stroll’ or simply ‘Kiss & Go’ on your way to school, work or back home. Arranging to meet with a friend – or just knowing that others will be walking and wheeling along this route – increases everyone’s comfort and enables more families to be able to choose to use active travel fully or part-way to/from school.

*\*Not all sites are suitable for drop-off/pick-up with a vehicle, see your school’s “Plan Your Route Map”*



## Kiss & Go!

These sites are located in the school drop-off loop, parking lot and/or along nearby streets where parking is limited or not permitted. The intent of Kiss & Go is to reduce congestion. This creates safer spaces for those students taking active travel, ensuring those families that have mobility or student needs have access to drop-off/pick-up parking, as well as reducing congestion for everyone!



## Crossing Guard Appreciation



Hillcrest students and staff participated in the first annual Crossing Guard Appreciation event hosted by the CRD, ICBC and the school. Every day, no matter the weather, dedicated crossing guards help students and their families get to and from school safely. To express gratitude, Crossing Guards were gifted an ICBC travel mug and classes created hand-made thank you cards to say thanks for all they do.

## Grade 4/5 Bike Skills

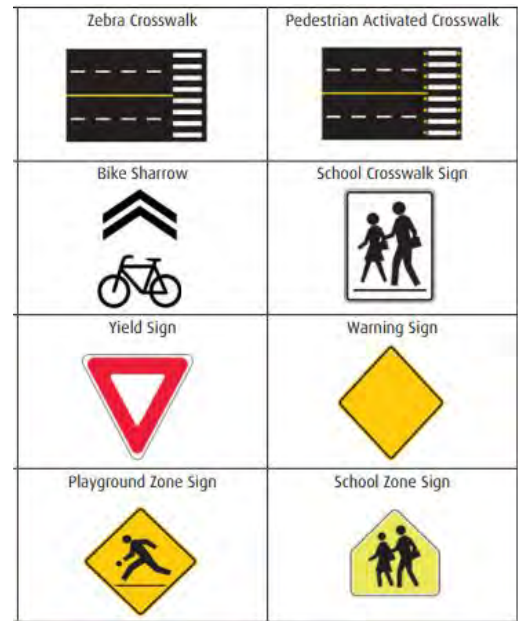
To encourage and enable more students to be able to walk & wheel to school, Ready Step Roll secured bike skills through iRide. There is also an ongoing provincial initiative called Everybody Rides Grade 4-5 program available for students at Hillcrest. Cycling education for students helps raise a generation of sustainable transportation and safe road users.

When everybody rides, everybody wins! Check out this before and after shot at Hillcrest, taken in October 2020 and again during the week of Bike Skills!



## ICBC – Think of Me

In the fall of 2021, Hillcrest students will participate in the “Think of Me” program in partnership with ICBC and Saanich police. This program aims to have police enforce traffic issues near the school using messages drawn on “warning tickets” created by students to raise awareness around road safety. The program is focused on students in grades K-3. Classes will also be encouraged to go outside around the school-neighbourhood to identify infrastructure, street signs, alternative routes and hazards.



## GoByBike Week and the CRD Walk & Wheel to School Week

Formerly known as Bike to Work (or school) Week, GoByBike has evolved to be more inclusive to individuals and the various trip destinations throughout Greater Victoria. Schools are able to create a team online, track rides and win prizes by participating in this annual spring event. The CRD Walk & Wheel to School Week was run independently through schools due to COVID-19. Schools had the option to participate by tracking trips on a school poster and offering small encouragement prizes.



Capital Bike is the local GoByBike chapter for Greater Victoria. In addition to facilitating the annual GoByBike events, the team at Capital Bike has also built the new All Aboard Family Cycling Program. This program includes online family cycling resources focusing on three topics: Cycling While Pregnant, Cycling With Kids (On Your Bike) and Cycling With Kids (On Their Bikes). They also offer free skills workshops and family rides where instructors teach best practices, bike maneuvering skills and tips, ending with a fun all ages and abilities group ride to a fun destination.

## PLAN YOUR ROUTE TO HILLCREST ELEMENTARY

“Plan Your Route to Hillcrest Elementary” map was created to show the pedestrian and cyclist infrastructure that provides for safer active travel in Hillcrest Elementary school neighbourhood, as well as the “Walk & Wheel for 5” sites and routes, and “Kiss & Go” sites.

### Try planning & practicing your family’s active route to school!

#### Appendix A: Plan Your Route to School Resources

- ✓ Brochure with map - Hillcrest Elementary
- ✓ Route Planning Activity for Families

Families who **plan**, **prepare**, and **practice** walking and wheeling to school help support children of all ages and abilities to learn safe and smart street-skills while gaining confidence, independence, and daily physical activity. Children will discover how easy, fun and sustainable any trip can be when you plan, prepare and practice using active travel.

## Plan

- ✓ Plan the route to school with your child (see “Plan Your Route” map/brochure)
- ✓ Identify landmarks, road names, crosswalks to use, as well as potential hazards
- ✓ Help your child dress for the weather and visibility in the dark
- ✓ Ensure all equipment is safe and suitable for your child
- ✓ Try a “Walk and Wheel for 5” site and route (see “Plan Your Route” map/brochure)

## Prepare

- ✓ Set a good example when walking/wheeling and driving
- ✓ Practice walking/wheeling with your child on weekends - [CRD Bike Map](#)
- ✓ Teach Pedestrian Skills and rules of the road using [ICBC educational materials](#)
- ✓ Teach Bike Skills and road rules using the [“Bike Sense – Edition 7”](#)
- ✓ Encourage independence – allow your child to help make decisions along the way

## Practice

- ✓ Quiz your child on road rules and street signs
- ✓ Keep things fun with [CRD’s Active Travel Resources for School Communities](#)
- ✓ Practice your route, invite friends to join you in walking/wheeling
- ✓ Explore new trails, parks, and activities that encourage active travel

## TIPS FOR FAMILIES

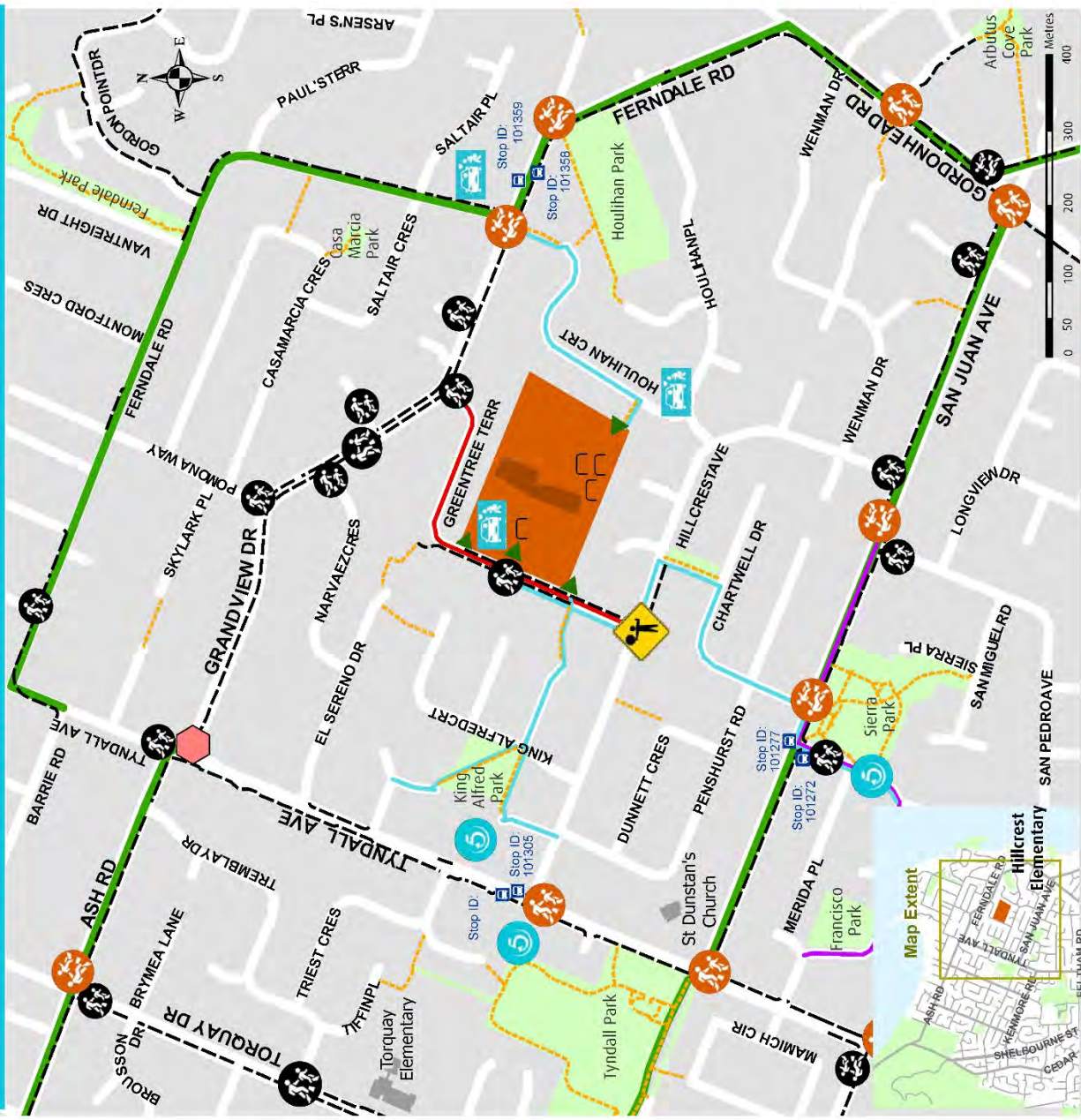
- ✓ Teach children to use crosswalks, sidewalks & crossing guards when possible. If there are no sidewalks, walk on the opposite side of the street to watch for oncoming traffic.
- ✓ Usually drive door-to-door? Try a 'Walk & Wheel for 5' site to reduce school traffic congestion & other benefits of active travel.
- ✓ Build up confidence by practicing your skills together as a family on the weekend.
- ✓ Encourage kids to try new ways to travel (walk, bike, scooter etc.) to keep things fun! Invite neighbours & friends to join you along the way or meet up & go together part-way.

-  **Kiss & Go - maximum 2 minute stop**
-  **Walk & Wheel for 5 sites & Routes**
  - ✓ Ferndale/Grandview & Tyndall/Hillcrest Walk & Wheel pathway or ride bus 27 & 28
  - ✓ Sierra Park & King Alfred Park & Tyndall Park Street parking available
-  **Pedestrian Activated Crosswalk**
-  **Marked Crosswalk**
-  **Crossing Guard - 15 mins before & after school**
-  **All Way Stop Intersection with Crosswalk**
-  **Public Bus Stop closest to Hillcrest Elementary**
-  **Bicycle Rack**
-  **School Access Point**
-  **Sidewalk**
-  **Bike Route**
-  **Multi Use Trail Connections**
-  **Playground Zone - 30km/h dawn to dusk**
-  **School Zone - 30km/h 8am - 5pm**



Important: The Capital Regional District (CRD) does not warrant or represent that the information herein is free from errors or omissions, nor does it warrant the safety or suitability of any route, trail, road or pathway depicted or otherwise described herein. This information is provided for general information purposes on the condition that the (CRD) will not be liable for any loss, damage, costs, or expense whatsoever incurred by any person or entity using or otherwise relying upon it. The use of this document by any person or entity is entirely at their sole risk.

## PLAN YOUR ROUTE TO HILLCREST ELEMENTARY



500 metres is about a 5 minute walk

## KEEP ROLLING WITH 'NEXT STEPS'

By design, the RSR initiative's focus on the 6 E approach, aims to build capacity within partners to fulfill the action plan items and further enable and inspire active travel mode choice. Recognizing that many of the school partners (administration, teachers, PAC, parents and students) move on to new schools, 'Next Steps' aim to facilitate the hand-off to the new school community over time so they can continue to foster Hillcrest Elementary's active travel culture, using the 6 E's.

### Keep Rolling with Next Steps:

#### Shifting Gears...

As the RSR initiative with your school concluded in Summer 2021. Paper and [digital](#) copies of the final report and resources will be provided to the school and local government, including a large poster size map for the school to display. CRD staff are available to present the final report to the new PAC in Fall 2021.

#### Keeping in Step...

The school and the local government should continue to implement the **Action Plan** (Appendix B). Suggested actions to be completed or considered by the various partners identified. Each new school year the School Administration and PAC should review the "Kiss & Go" sites and "Walk and Wheel for 5" sites and routes to ensure they are meeting the needs of the school families in a changing urban environment. **Promote the "Plan Your Route to Hillcrest Elementary" brochure and activity - update as needed.**

#### Gaining Momentum...

We are always updating the [6 E's of Active School Travel - Online Resources for School Communities](#) activities, resources and key messages to continue to foster an active travel culture. Try a "Walk and Wheel for 5" site and route. Identify members of the PAC that can lead active travel initiatives!

## PARTNER KEY CONTACTS & LINKS TO RESOURCES

- District of Saanich Engineering [engineering@saanich.ca](mailto:engineering@saanich.ca)
- CRD Ready Step Roll [regionalplanning@crd.bc.ca](mailto:regionalplanning@crd.bc.ca) 250.360.3195
- [District of Saanich Active Transportation Plan](#) & [CRD Pedestrian and Cyclist Master Plan](#)
- [CRD Bike Map](#)
- [GoByBike-Greater Victoria](#) (GoByBike Week, bike skills) and [iRide](#) (bike skills)

## APPENDICES

Appendix A – Hillcrest Elementary Plan Your Route to School Map and Activity

Appendix B – Hillcrest Elementary – Action Plan

Appendix C – Hillcrest Elementary Consultation Data and School Newsletters

Appendix D – 6 E's of Active School Travel - Online Resources for School Communities



# Appendix A: Plan Your Route Map & Activity Hillcrest Elementary



Hillcrest Elementary

August 2021



**READY STEP ROLL**  
ACTIVE SCHOOL TRAVEL PLANNING



## What is 'Walk & Wheel for 5' ?


**Walk & Wheel for 5** is designed to support student safety by easing vehicle congestion at the school during arrival & dismissal times, while saving you time, building student confidence & enabling more families to be active.

These unsupervised sites are five minutes (500 meters) from the school & may be used as **alternative drop-off & pick-up sites for households that drive, walk, wheel, bike or take public transit together.**

Use these sites to **Meet-Up & Go, Park & Stroll or simply Kiss & Go** on your way to school.

Supporting safety in numbers on common routes to school ultimately creates safer active travel conditions for everyone.

## Your choice makes a difference



When you choose not to drive door-to-door you help reduce road congestion and support safety in numbers.



Reducing vehicle traffic during arrival & dismissal times makes school parking lots & streets safer for everyone.

## Benefits of Active Travel

- Create safer school streets 
- Spend time together outside 
- Build confidence & capacity 

"I love the Walking School Bus, because now my Mom gets to work ON time!"  
- Grade 3 Student Rogers Elementary

"It's really tough to walk/wheel when both parents have full time jobs...  
...If there was a walking or cycling group I would allow our kids to join it."  
-Keating Elementary Parents

## Questions?

Contact the PAC, Principal or CRD Regional and Strategic Planning regionalplanning@crd.bc.ca



# PLAN YOUR ROUTE TO HILLCREST ELEMENTARY




Join in & help support more students and their families confidently choose active travel

PROUDLY SUPPORTED BY:





# TIPS FOR FAMILIES

- ✓ Teach children to use crosswalks, sidewalks & crossing guards when possible. If there are no sidewalks, walk on the opposite side of the street to watch for oncoming traffic.
- ✓ Usually drive door-to-door? Try a 'Walk & Wheel for 5' site to reduce school traffic congestion & other benefits of active travel.
- ✓ Build up confidence by practicing your skills together as a family on the weekend.
- ✓ Encourage kids to try new ways to travel (walk, bike, scooter etc.) to keep things fun! Invite neighbours & friends to join you along the way or meet up & go together part-way.

**Kiss & Go - maximum 2 minute stop**

**Walk & Wheel for 5 sites & Routes**

- ✓ Ferndale/Grandview & Tyndall/Hillcrest Walk & Wheel partway or ride bus 27 & 28
- ✓ Sierra Park & King Alfred Park & Tyndall Park Street parking available

**Pedestrian Activated Crosswalk**

**Marked Crosswalk**

**Crossing Guard - 15 mins before & after school**

**All Way Stop Intersection with Crosswalk**

**Public Bus Stop closest to Hillcrest Elementary**

**Bicycle Rack**

**School Access Point**

**Sidewalk**

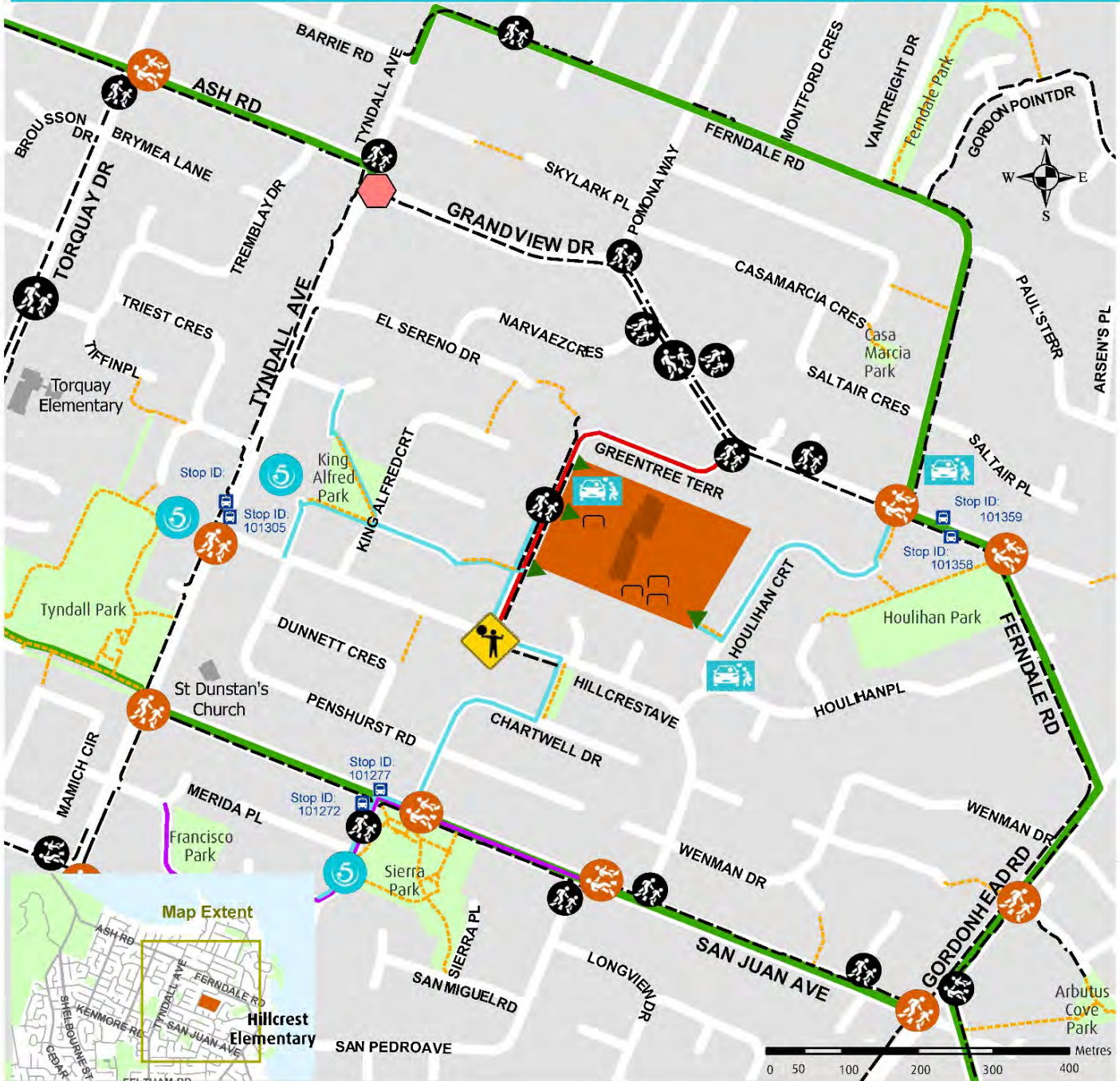
**Bike Route**

**Multi Use Trail Connections**

**Playground Zone - 30km/h down to dusk**

**School Zone - 30km/h 8am - 5pm**

# PLAN YOUR ROUTE TO HILLCREST ELEMENTARY



500 metres is about a 5 minute walk

## PLAN YOUR ROUTE TO SCHOOL ACTIVITY

Families who **plan, prepare, and practice** walking and wheeling to school will help support children of all ages and abilities to learn safe and smart street-skills while gaining confidence, independence, and daily physical activity. On top of this, children will learn how easy, fun and sustainable using active travel for any trip can be when you plan, prepare and practice.

This activity aims to help families plan their route to their school by mapping out pedestrian and cyclist infrastructure, to show safe routes for walking and wheeling.

-----

**1. On a sheet of paper, record each family member’s morning & afternoon commute. Be sure to consider any additional stops along the way to their final destination.**

Most mornings, \_\_\_\_\_ travels \_\_\_\_\_ by: \_\_\_\_\_  
(family member name) (alone/with others to destination:) (mode of transportation)

Most afternoons, \_\_\_\_\_ travels \_\_\_\_\_ by: \_\_\_\_\_  
(family member name) (alone/with others to destination:) (mode of transportation)

Most days, \_\_\_\_\_ would prefer to travel \_\_\_\_\_ by: \_\_\_\_\_  
(family member name) (alone/with others to destination:) (mode of transportation)

**2. Set family goals! Be sure to consider the age, ability, and independence of each child.**

*(Ideas: “Our child will be dropped off 5 minutes away from school so they can walk part way”, “We will practice biking as a family to school on weekends, so our child can bike alone”, “I will start a walking school bus so other kids don’t have to walk alone”)*

1. \_\_\_\_\_
2. \_\_\_\_\_
3. \_\_\_\_\_

I would like to accomplish:

\_\_\_\_\_ by \_\_\_\_\_  
(write your personal goal here) (date)

### TRAVEL TIP: SKIP THE LINE!

**‘Kiss and Go’ or ‘Park and Stroll’ at any of the “Walk & Wheel for 5 ” sites available at your school to avoid long lines and idling in the drop off loop line up.**

### 3. Consider and make note of potential barriers in each family member’s goal.

i.e. Barrier “Timing – we can’t bike to school together in the morning, because I will arrive late.

Strategy Use school’s early supervision to allow our family to drop Sam off early, and then bike to work.

Barriers	Strategies for success

### 4. Use Google Maps to determine the most direct route to school for your family. Explore different routes and travel time estimates for your preferred travel mode.

Route option 1: \_\_\_\_\_

\_\_\_\_\_

Route option 2: \_\_\_\_\_

\_\_\_\_\_

### 5. Plan your family’s route! Use the attached map to compare suggested Google routes to your school’s local infrastructure. With your child, identify safe crossings, caution points, and landmarks to help prepare them to walk and wheel to school.

What walk and wheel infrastructure can you use on the way? (check all that apply)

- Sidewalk
- Marked Crosswalk
- Signalized Crosswalk

- Pedestrian Overpass
- Crossing Guard
- Bike Lane

- Walking School Bus
- Drive to 5 Parking Area
- Pedestrian/Cyclist Trail

#### To travel my route, I will use:

(circle the modes you will use)



It will take about \_\_\_\_\_ minutes to travel \_\_\_\_\_.

(time in minutes)  (distance; m or km)

**Plan, Prepare, Practice!**

# Appendix B:

# Action Plan – Hillcrest Elementary



Hillcrest Elementary

August 2021



**READY STEP ROLL**  
ACTIVE SCHOOL TRAVEL PLANNING

Location of Concern	Issues raised	Proposed Solutions	Key Players	E's	Timeline
<b>Hillcrest School Site Access</b>					
<b>School Drop Off Loop and Parking</b>		Share CRD developed resources with Families to encourage lower volumes	School//PAC	Encouragement	2021
		Support Engineering actions with encouragement events: 1. Develop Plan Your Route Map to build capacity and knowledge of active travel mode support at Hillcrest 2. Create handout for families to inform and encourage use of Walk & Wheel for 5 sites/routes - Locations to promote: Sierra Park, King Alfred Park, St.and bus stops 3 Consider building on the Walk & Wheel sites by creating walking school bus to support parents with "kiss and go" method while recognizing varying perceptions of safety - could be volunteer led or paid position similar to a crossing guard.	1. CRD 2. CRD 3. School/PAC	Encouragement Education	1. Spring 2021 2. Spring 2021 3. Future Consideration
	High vehicle volumes using drop off loop, parking lot and street parking - blocking sidewalks, visibility of crosswalk, student safety in loop and parking lot and parking on school yard grass. Vehicles have been hit & run in parking lot. Blocking driveways on street.	1. Consider additional delineation/signage at driveway entrance to prevent vehicles from stopping and blocking entrance - Drop off loop was recently repainted with stopping area along curb; a middle "no-stopping" thru lane & angled teacher parking to the right 2. Consider installation of benches/natural seating to create barrier to prevent vehicles from parking on grass 3. School & PAC to consider closing school drop-off/pick-up loop due to high concerns for student safety. This could be piloted as a once a week initiative (i.e Walk and Wheel Wednesdays) or trial for a month, or considered closed on for a school year or as a trial in cooperation with a one week/one month "school streets" (see #5 below) and/or promotion of "Walk and Wheel for 5 sites" (see below in Encouragement section) 4. School & PAC to consider hosting a School Street on Greentree Terrace (along the school frontage only) to encourage reduced traffic congestion in school zone. See CRD developed "School Streets Toolkit" for a how to guide to facilitate process (including requests to Saanich for permits) *Tree planting was considered, but underground infrastructure presents a challenge.	1&2. SD61 3&4. School/PAC & Saanich	Engineering/Equity/ Enforcement	1. For Future Consideration 2. For Future Consideration 3-4. 2022 or as capacity permits
		AM supervisor does a good job of keeping vehicles moving; continue education and awareness through school	School	Enforcement	Ongoing
	Vegetation at drop off loop entrance is overgrown; major blind spot for pedestrians and drivers	1. Consider reviewing curb radii into drop off loop; - considered by Saanich Engineering, determined to be high cost action with lower cost options available 2. Request vegetation maintenance at school drop off driveway entrance and along neighbourhood cut-through (knutsford-greentree) to remove blind spot for pedestrians and drivers 3. Consider installation of speed bump on school property	1. Saanich 2. Saanich 3. SD61	Engineering	1-2. 2021 3. Considered, not implemented
	Accessible parking space poorly located - blocks curb access when in use	Relocate curb let down at the accessible parking space (currently blocked for wheelchair access when space is in use)	SD61	Engineering	TBD
Narrow sidewalk to back of school with high pedestrian and cyclist volumes	Review bike rack locations; consider relocating school bike rack to the front of the school - New Bike rack purchased through Ready Step Roll to be installed at front of school	SD61	Engineering	Early 2021	
<b>Hillcrest School Perimeter Streets</b>					
<b>Greentree Terr</b>	Parents park in no stopping areas, causing visibility issues for pedestrians	Review and update existing "no parking" and "no stopping" signs; specifically at crosswalks and intersections.  Consider strategic installation of flexible bollards to create physical barrier to prevent parking	Saanich  Saanich	Engineering  Engineering	2021  2021
	Limited school zone/school area signage	Review the school perimeter area for opportunities to install or update "School Zone" or "School Area" signage Request for additional signage on Greentree from Grandview to improve awareness/visibility of signage - parents concerned with visibility due to placement of sign	Saanich	Engineering	2021
	School zone sign at Hillcrest/Greentree is loose from base	Address loose sign	Saanich	Engineering	Completed
	High vehicle speeds from parents in school zone	Request targeted patrols in area to enforce school zone	Police	Enforcement	Ongoing

**Timelines**

Short-term: estimated completion 2021  
 Medium-term: estimated completion 2022-2024  
 Long term: estimated completion 4+ years

Location of Concern	Issues raised	Proposed Solutions	Key Players	E's	Timeline
Greentree Terr	Poor use and perception of safety at front of school crosswalk due to high parent vehicle volumes.  <i>Crosswalk leads to front doors; main entrances for students are located at the back and students need to access the sides of the school</i>	Participate in Think of Me to improve student active travel capacity	ICBC	Education	2021
		Consider installation of raised crosswalk along Greentree to deter high vehicle speeds	Saanich	Engineering	2021
		Observe use & crossing patterns to determine if crosswalk is in the best location - reviewed, determined best location as it is between two cut-through and provides best sight lines	CRD	Evaluation	Completed
	EA works as crossing guard but is underused (starts at 8:10 - 15 min before school; 2nd EA on site)	Host Crossing Guard Appreciation Week in School to encourage support of safe AT  Review location of Crossing Guard and investigate additional funding for relocation to: a) Hillcrest/Greentree - suggest moving here after raised crosswalk is installed on Greentree b) Grandview/Ferndale (required funds) *School/pac seeking revision on this crosswalk to assess need for Crossing Guard. If warranted, Saanich may be able to provide additional funding.	CRD  CGVCA/School/PAC	Encouragement  Encouragement Equity	Completed  Ongoing
	Uneven surfaces in sidewalk	Review sidewalk condition and perform repairs as needed.	Saanich	Engineering	Completed
Houlihan Ct	Lack of school area signage for drivers	Review location for the installation of school zone signs on Houlihan Pl and Houlihan Ct.	Saanich	Engineering	Completed
	Negative parent perceptions prevent students from accessing school from here	Educate parents on provided supervision at the school's back field to ensure further use of the Houlihan Ct access point	School	Equity	Ongoing
		Install Kiss and Go signage to create awareness of connection and to support compliance of parking restrictions	Saanich CRD RSR	Engineering Encouragement	Ongoing
<b>Hillcrest Catchment Area</b>					
Neighbourhood Cut Throughs <i>Knutsford-Greentree El Sereno - Greentree El Sereno - King Alfred Chartwell - Hillcrest Houlihan - Grandview San Juan - Penhurst Casa Marcia - Ferndale Cortez - San Capri Dunnett - Hillcrest Feltham - San Lorenzo</i>	Limited use of cut-throughs by pedestrians/cyclists	Consider installation of wayfinding signage at cut-throughs to encourage use	Saanich	Engineering Education	Medium- Term
		Review bollard widths at cut-through entrances (Feltham - San Lorenzo was specifically noted as too narrow for bike trailers)	Saanich	Engineering	Completed
		Perform vegetation maintenance as needed	Saanich	Engineering	Short-term
Tyndall Rd	Lack of crosswalk for pedestrians	Crosswalk at Tyndall and Hillcrest to be installed in 2021 (separate from RSR)	Saanich	Engineering	Short-term
	Lack of sidewalks on both sides of street	There are a number of sections of sidewalk missing along Tyndall. Requests for the installation of sidewalks to fill in these gaps.	Saanich	Engineering	Medium- Term
Sidewalks in School Catchment Neighbourhood	Lack of sidewalks in neighbourhood	Saanich has hundreds of kilometers of sidewalks planned for construction throughout the municipality over the next 30 years. Hillcrest area is about 15 years out. The 30 year plan along with the short-, medium-, and long-term priorities can be found in the Saanich Active Transportation Plan available on the Saanich Website.	Saanich	Engineering	Long-Term
Bike Lanes in School Catchment Neighbourhood	Lack of bike Lanes in School Catchment Neighbourhood	Hillcrest Ave, Grandview Dr, & Ferndale Rd are in long term plan for on-street Bike network	Saanich	Engineering	Long Term
		Torquay Dr, Feltham Rd and San Juan Ave all in long term plan for AAA network	Saanich	Engineering	

**Timelines**  
 Short-term: estimated completion 2021  
 Medium-term: estimated completion 2022-2024  
 Long term: estimated completion 4+ years

Location of Concern	Issues raised	Proposed Solutions	Key Players	E's	Timeline
<b>Encouragement &amp; Education Opportunities</b>					
Activity	Opportunity	Proposed Actions	Key Players	E's	Timeline or Priority
<b>Walk &amp; Wheel for 5 sites</b> Public Transit stop on: <i>Grandview@ Ferndale,</i> <i>San Juan @ Chartwell,</i> <i>Tyndall @ Hillcrest</i> <i>Sierra Park</i> <i>King Alfred Park</i>	Congestion on Greentree Rd during arrival/dismissal, causes student safety issues on Greentree and in drop-off/pick-up loop - vehicle volume & blocking driveways, sidewalks, accessible parking	See Walk & Wheel for 5 (Appendix A) for additional details on distances, routes and site information.	CRD-RSR School/PAC Saanich PD Saanich	Education Encouragement Equity	Spring 2021 Onward
<b>School Streets</b>		See CRD's "School Streets- How To Toolkit" School administration and PAC could consider trying this idea via a limited time pilot to evaluate success to implement on a regular, longer or permanent timeframe. School Streets aim to address safety concerns within the loop and the sidewalk at the entrance and exit. This could be piloted a number of ways – once a week with "Walk & Wheel Wednesdays", in cooperation with a School Streets (one week or one month long) or to promote the use of the Walk and Wheel for 5 sites.			June 2021 Fall 2021. & evaluate for further consideration
<b>Crossing Guards</b>		Poor parent perception of crosswalk due to vehicle volumes and speeds on Grandview			Review location of Crossing Guard and investigate additional funding for relocation to this crosswalk 1. With the engendering enhancement to the crosswalk on Greentree (directly in front of school) to a raised crosswalk, school and Saanich has agreed to move crossing guard from in front of school to corner of Hillcrest and Greentree. When funds permit, add additional crossing guard at Greentree and Grandview
<b>ICBC - Think of Me program</b>	This campaign aims to educate students on risky driver behaviours, specifically within school zones and best safety practices for road users	Distanced Programming available to be offered to students	CRD-RSR ICBC School		Spring 2021 & Fall 2021
<b>Crossing Guard Appreciation Month</b>	This campaign involves students learning about/celebrating the community role served by CGs	Participate in CGAM	ICBC RSR-CRD PAC/School		February 2021 Consider repeating annually
<b>Bike Skills</b>	Student Bike skills needed	RSR has scheduled 1 ride for Hillcrest gr 4 & 5's in spring'21. Requires volunteer PAC/parent so that there are sufficient number of adult supervisors.	CRD-RSR PAC/School		May-21

# Appendix C:

# Consultation Data & School Newsletters – Hillcrest Elementary



Hillcrest Elementary

August 2021



**READY STEP ROLL**  
ACTIVE SCHOOL TRAVEL PLANNING



## Consultation Data

### Active School Travel Report

### Hillcrest Elementary 2020/21

Key consultation findings are presented in the *Active School Travel Report – Hillcrest Elementary 2020/21*.

This appendix contains the data collected from the main sources of consultation as describe below. Please note that additional verification consultation was conducted as outlined in the main section of the report; this **qualitative data is not presented here**.

#### A. Hands Up Survey – Results

Collects in-class quantitative data from students by asking how students travelled to school and how they will be travelling home after school. Collected Monday October 19th – Friday Oct 23rd 2020. The anticipated Spring “Hands Up Survey” was cancelled as schools were not in session due to Covid-19.

#### B. Online Baseline Parent Travel Survey – Data

Collects qualitative and quantitative data from parents to gain a deeper understanding of how students are travelling, as well as why they choose or may opt to change their travel mode. Conducted at the beginning of the initiative as baseline data Monday June 8 – Friday June 26<sup>th</sup> 2020.

#### C. Walkabout – Data

Collects qualitative data from public and professional stakeholders to determine infrastructure improvements. The route followed on the Walkabout is developed through the analysis of the Online Parent Travel Survey comments and results. The initial Hillcrest Walkabout with the District of Saanich took place in the morning on September 2nd 2020. A second walkabout took place on October 1st, 2020 at 8:15am with a limited number of invitees due to Covid-19. Attendees included the Vice Principal, municipal staff, Saanich Police and Ready Step Roll staff – the PAC representative was unable to attend due to a last minute time conflict.



## A. Hands Up Survey

Dates conducted: Monday October 19th – Thursday Oct 22rd 2020

Total students trips counted: 719

“How did you travel to and from school today?”

Mode To/From	TO	FROM	Grand Total
Walk	18.9%	19.3%	19.1%
Walk part-way	10.3%	8.1%	9.3%
Bike	8.4%	8.5%	8.4%
Roll	1.0%	1.2%	1.1%
W&W to School Bus	0.0%	0.0%	0.0%
Drive to School Bus	0.0%	0.1%	0.0%
Public Transit	0.1%	0.5%	0.3%
Carpool	3.1%	4.3%	3.7%
Car	58.1%	58.1%	58.1%
<b>Grand Total</b>	<b>100.00%</b>	<b>100.00%</b>	<b>100.00%</b>

Mode by Grade	K	K-1	1	1-2	2	3	3-4	4	4-5	5	Grand Total
Walk	9.2%	25.3%	4.1%	37.1%	25.3%	16.5%	21.1%	22.6%	8.4%	25.7%	19.6%
Walk part-way	0.0%	4.4%	34.0%	0.0%	9.2%	12.9%	11.7%	11.3%	13.8%	3.1%	9.7%
Bike	5.9%	8.9%	13.2%	2.0%	6.4%	11.0%	5.6%	13.0%	12.4%	8.8%	8.4%
Roll	0.0%	1.9%	1.0%	0.0%	1.9%	3.9%	0.0%	0.0%	0.0%	0.0%	1.0%
W&W to School Bus	0.0%	0.0%	0.0%	0.0%	0.0%	0.0%	0.0%	0.0%	0.0%	0.0%	0.0%
Drive to School Bus	0.0%	0.0%	0.0%	0.0%	0.0%	0.0%	0.0%	0.0%	0.0%	0.0%	0.0%
Public Transit	0.8%	0.0%	0.0%	0.0%	0.0%	0.0%	0.0%	0.0%	0.0%	1.5%	0.3%
Carpool	0.0%	7.0%	5.1%	0.0%	3.9%	4.7%	10.0%	4.3%	3.6%	0.8%	3.6%
Car	84.0%	52.5%	42.6%	61.0%	53.2%	51.0%	51.7%	48.7%	61.8%	60.2%	57.4%
<b>Grand Total</b>	<b>100.0%</b>	<b>100.0%</b>	<b>100.0%</b>	<b>100.0%</b>	<b>100.0%</b>	<b>100.0%</b>	<b>100.0%</b>	<b>100.0%</b>	<b>100.0%</b>	<b>100.0%</b>	<b>100.0%</b>

Mode by Day	Mon	Tues	Wed	Thurs	Fri	Grand Total
Walk	15.6%	16.4%	20.1%	21.7%	21.8%	19.1%
Walk part-way	7.6%	7.6%	10.0%	10.3%	11.2%	9.3%
Bike	8.2%	7.8%	8.7%	8.1%	9.4%	8.4%
Roll	2.6%	0.4%	0.9%	1.1%	0.4%	1.1%
W&W to School Bus	0.0%	0.0%	0.0%	0.0%	0.0%	0.0%
Drive to School Bus	0.2%	0.0%	0.0%	0.0%	0.0%	0.0%
Public Transit	0.7%	0.2%	0.0%	0.2%	0.2%	0.3%
Carpool	3.0%	3.6%	3.1%	5.0%	3.6%	3.7%
Car	62.0%	64.0%	57.1%	53.5%	53.3%	58.1%
<b>Grand Total</b>	<b>100.0%</b>	<b>100.0%</b>	<b>100.0%</b>	<b>100.0%</b>	<b>100.0%</b>	<b>100.0%</b>



## B. Parent Baseline School Travel Survey

Date conducted: Monday June 8th – Friday June 26<sup>th</sup> 2020

Total number of surveys received: 108

“How far away does the student live from school?”

	Percent of Students
Less than 0.5 km	17.74%
0.5 to 1.5 km	44.35%
1.6 to 3 km	37.10%
3.1 to 5 km	0.81%
Less than 0.5 km	17.74%
<b>Grand Total</b>	<b>100.0%</b>

“How far away does the student live from school” (Sorted by travel mode)

Distance	Active Travel Users	Car Users	Grand Total
Less than 0.5 km	14.52%	3.23%	17.74%
0.5 to 1.5 km	16.13%	28.23%	44.35%
1.6 to 3 km	8.87%	28.23%	37.10%
3.1 to 5 km	0.00%	0.81%	0.81%
<b>Grand Total</b>	<b>39.52%</b>	<b>60.48%</b>	<b>100.00%</b>

“How does your child(ren) usually travel to and from school?”

Travel Mode	To School	From School
Bicycle	8.66%	8.94%
Walk	27.56%	26.83%
Public Transit	3.15%	3.25%
Car	59.06%	60.16%
Carpool	1.57%	0.81%
	100.0%	100.0%

“How would you prefer your child travel to and from school?”

Travel Mode	Percent of Students
Walk the whole way	39.84%
Walk part of the way (at least one entire block)	0.78%
Skateboard/scooter/wheelchair the whole way	3.91%
Skateboard/scooter/wheelchair part of the way (at least one entire block)	0.78%
Bicycle	37.50%
School bus	4.69%
Public transit	2.34%
Car (just your family)	8.59%
Carpool (two or more families)	1.56%
	100.0%



Who usually accompanies your child to school or the bus stop?

Travel Mode	Total # of Students Using Mode	Adult	Adult & Other Students	Other Students	Alone
Bike	11	7	1	1	2
Car	74	53	21		
Carpool	2	2			
Public Transit	4	2			2
Walk	33	24	2	1	6

Does your child own a suitable bike?

	Count of Suitable Bike Child
Yes	85.48%
No	14.52%
<b>Grand Total</b>	<b>100.00%</b>

Do you (the parent) own a suitable bike?

	Count of Suitable Bike Parent
Yes	88.80%
No	10.40%
No Response	0.80%
<b>Grand Total</b>	<b>100.00%</b>

“Would you allow your child to walk or bike to/from school?”

Row Labels	Count of Allow Walk/Bike
Yes	62.00%
No	28.00%
Haven't considered it	10.00%
<b>Grand Total</b>	<b>100.00%</b>

“Why do you currently drive to/from school?”

Reasons Driven To School	Count
Sum of ReasonDriven_Distance from home is too far	9
Sum of ReasonDriven_Out of school care	6
Sum of ReasonDriven_Convenience/time pressures	33
Sum of ReasonDriven_Health/physical disability limitations (self or child)	2
Sum of ReasonDriven_Inconvenient timing or location of school bus	0
Sum of ReasonDriven_Too young	24
Sum of ReasonDriven_Lack of interest in walking/cycling	2
Sum of ReasonDriven_Lack of equipment (bike)	1
Sum of ReasonDriven_Traffic safety concerns	33
Sum of ReasonDriven_Personal safety concerns	16
Sum of ReasonDriven_Weather	16

“What would encourage you to let your child(ren) walk to/from school?”

Would encourage walking if...	Count
Sum of EncourageWalk_Increased visibility/awareness of school bus stops	3
Sum of EncourageWalk_Additional marked crossings	35
Sum of EncourageWalk_Continuous sidewalks/trails	76
Sum of EncourageWalk_Increased visibility/awareness of school zone	44



Sum of EncourageWalk_Lower vehicle speeds	53
Sum of EncourageWalk_Lower vehicle traffic volumes	32
Sum of EncourageWalk_Additional pedestrian activated crosswalks	37
Sum of EncourageWalk_Crossing guard attending key school crosswalk	26
Sum of EncourageWalk_Increased lighting	19

“What would encourage you to let your child(ren) bike to/from school?”

Would encourage biking if...	Count
Sum of EncourageBike_Continuous bike facilities	57
Sum of EncourageBike_Additional street crossings for bikes	49
Sum of EncourageBike_Lower vehicle speeds	57
Sum of EncourageBike_Secure/covered bike parking at the school	54
Sum of EncourageBike_Lower vehicle traffic volumes	38
Sum of EncourageBike_Crossing guard attending key school crosswalk	23
Sum of EncourageBike_Increased universal accessibility infrastructure	11
Sum of EncourageBike_Increased visibility/awareness of school zone	41
Sum of EncourageBike_Increased lighting	16

“What would encourage you to let your child(ren) walk & wheel to/from school?”

I will encourage walk and wheel by	Count
Sum of WillEncourage_More appropriate routes for active travel were identified	55
Sum of WillEncourage_My child has clothing to walk or ride in the rain	24
Sum of WillEncourage_Bike skills course was offered at our school	56
Sum of WillEncourage_Road safety course was offered at our school	63
Sum of WillEncourage_A Walking/Cycling School Bus was running at our school	28
Sum of WillEncourage_Active transportation encouragement events or celebrations were happening at our school	19
Sum of WillEncourage_Bike and Gear in good working condition	22

“What motivates you to use active travel?”

What Motivates me to AT	Count
Sum of Motivates_Getting physical activity/exercise	95
Sum of Motivates_Environmental benefits	56
Sum of Motivates_Saving time	75
Sum of Motivates_Safer than driving	66
Sum of Motivates_More convenient than driving	24
Sum of Motivates_More fun than driving	67
Sum of Motivates_Cheaper than driving	45
Sum of Motivates_Setting a good example	54
Sum of Motivates_Not having to worry about parking	9
Sum of Motivates_Spending time outside	37
Sum of Motivates_Spending time with other people	24

Safety concerns sited regarding route to/from Hillcrest Elementary at top three locations (*Edited for privacy*)

- **Hillcrest (15)** - Sidewalks (9), Speed (6), Request for Crossing Guard Relocation (4) , Vehicle stopping compliance (2), Visibility (1)
- **Tyndall (12)** -- Lack of connected sidewalks (6), Request for additional crossing opportunities (5), Vehicle speed (4), vehicle volume (4)
- **Greentree (6)** -- Lack of space for cyclists/pedestrians during peak hours (5), Vehicle volumes during drop off (5), Speed (2), crosswalk improvements (1)
- **Grandview (6)** --Vehicle speed (5), Vehicle volumes (4), Sidewalks (3), Vehicle stopping compliance at crosswalk (4) Request for crosswalk (2), Vehicle stopping compliance at crosswalk (1)
- **Ferndale (5)**-- Request for sidewalks (4), Vehicle speed (2), Request for additional crosswalks (1) Request for Bike Lane (1)
- **Ash (3)** -- Vehicle speed (2), Vehicle volume (2), Lack of sidewalk (2), Rolling stops (1)
- **Longview (2)** -- Request for upgraded crosswalk (1), Pedestrian visibility (1)
- **Houlihan (2)** -- Sidewalks (2)
- **San Juan (2)** -- Vehicle speed (2), Request for additional crossing opportunities (1), Intersection safety (1)
- **Torquay (2)** – Sidewalk connectivity (1), Vehicle speeds and volumes (1)
- **Cedar Hill (1)** – Vehicle speed, Pedestrian visibility
- **Chartwell (1)** – Sidewalks
- **Fairburn (1)** – Vehicle volumes
- **Feltham (1)** – Cut-through accessibility for bike trailers
- **Gordon Head Road (1)** – Request for crosswalk
- **Vantreight (1)** -- Uncomfortable for novice cyclists (1)

General comments regarding challenges and opportunities for active transportation at Hillcrest: (Edited for privacy)

- Adding a pedestrian crossing light and reducing the amount of cars increasing parking places and drop off areas to reduce the amount of cars waiting for parking spaces/drop off spaces
- I would be nice to have secure storage for bikes, scooters, helmets for the kids during the school day
- desperately need more bike racks on the black top of the school
- The many obstacles and dangers means that kids have less independence in traveling to school. This is on top of catchment boundaries which means that we talk 2.5 km to school (the nearest school is 850m but it's not our catchment school).
- This entire area has many parks and beaches that are perfect destinations for cyclists and pedestrians alike. Priority should be given to ensuring continuous sidewalks on both sides of busy, high traffic collector streets (for e.g. Tyndall, Feltham, Cedar Hill). Furthermore, actions need to be taken to change driver behaviour and increase awareness of pedestrian usage of streets. A lot has been done to make it safer for cyclists (who can also ride aggressively and disregard lights, cross walks and stop signs, however I increasingly feel unsafe walking and cycling with my young family in this and many other areas within the CRD, and feel that getting all vehicles to slow down and be more aware would help, especially in residential areas
- Hillcrest road does not have a continuous sidewalk and is one of the main roads to get to school. It also has a large bend in the road making a blind corner and lots of street parked vehicles. This makes it dangerous to walk on as pedestrians have to weave around parked cars as on-coming cars are trying to avoid other vehicle traffic, parked cars, and pedestrians
- The lack of full side walks on some streets means walking is a mix of sidewalks and shoulders.
- The crosswalk for kids coming from Hillcrest Ave needs either a crossing guard
- The crosswalk on Grandview at Ferndale is even worse. Cars go way too fast there. Very dangerous.
- With both parents working full days and our school-age children attending out of school care the opportunity to walk to and from school isn't an efficient use of time. Until our youngest child is old enough to walk to school without an adult to supervise or a parent's employment shifts to working from home more regularly we will likely have to continue to drive back and forth.

- I think that if there was someone actually policing parents at pick up and drop off times, they would probably behave. Or parents should be ticketed for parking in the wrong areas. Unless there is some repercussion their habits wont change since I don't think there is realistically much else that can be done regarding the infrastructure around the parking/street
- Greentree is clogged with vehicles. There is not enough room to accommodate travel in both directions and parking on each side. Also it would be safer if there were sidewalks on both sides of the street. Currently on the west side there is no continuous sidewalk to make it to the crosswalk. One must navigate the cars parked on top of the curb and the neighbors landscaping or walk in the street to access the crosswalk.
- It's very dangerous biking or walking for children on tyndal and worse is Hillcrest with no sidewalks
- I would love the path fixed from Houlihan Court to Hillcrest School (Grounds). It's a dirt and gravel path that severely needs maintenance."
- One challenge is choosing interventions that would really make a difference, such as greatly improving street lighting along entire routes (which means in the entire area, as different people will have different routes), versus facile ones such as posting lower speed limits (speed limits are already reasonable but are only enforced on major roads). Improving lighting everywhere is a great opportunity, and one that would likely reduce collisions between cars and pedestrians or bikes, as well as improve safety in general. We have generally very poorly lit streets, which is not much of an issue in high summer, but when the sun sets at 4:30pm and it's overcast, it's horrible.
- In Japan, school group kids 5-10 or so according to the address and they walk together. They have a designated gathering spot and time. And oldest kid is assigned to be a leader and they form a line to go to school. If there a app to do it, it will be great.
- Lack of curbed sidewalks in Saanich
- There is a general lack of sidewalks in this area. Even a sidewalk on one side of the road would be a good compromise and likely more financially feasible than a sidewalk on both sides. The best would a sidewalk on one side and painted bike lanes where there is a bike route like San Juan Avenue.
- More sidewalks and bike lanes as well as speed limits or speed bumps
- "Kids biking to school is a huge opportunity for active transportation and to reduce school traffic congestion. Especially at the Elementary age, I feel there is a huge void for cycling confidence and competence.
- Can schools and school communities do more programming/education/opportunities to help kids learn to ride bikes safely. Say for example partner with programs like Iride or police run safety programs. Where is the physical literacy for cycling.
- The police bicycle safety program (historically where all the kids brought their bikes to school) at Hillcrest was cancelled in place of an assembly. How well does an assembly teach bike safety in place of applied practice.
- I know there are challenges/barriers to running cycling programs at schools...given that it is not inclusive and not all kids have proper equipment. Thus no one gets the cycling outreach programs like Iride or police programs.
- I feel that kids cycling to and from school creates healthy families and more confidence and independent kids!
- Yes, families take the ultimately responsibly and risk to teach their kids to ride. But i feel schools and community groups could be more open and embrace learn to ride cycling programs at elementary schools."
- The intersection of Tyndall and Hillcrest has 2 bus stops. There are no sidewalks on Hillcrest connecting them. There is no crosswalk across Tyndall between the stops. Cars turn very quickly at this corner. If a pedestrian is walking facing traffic on the Hillcrest road toward Tyndall they are at risk of getting hit. I have a friend who has had a number of close calls. Sidewalks and crosswalks would increase safety.
- There is no sidewalk or bike lane on the way to school (from San Rafael to Hillcrest). Child has difficulty staying on right hand side of road. Cars frequently travel very quickly on San Juan and Hillcrest Ave.
- Additional bike training for kids with disabilities would help to make it a safer option for our child. Helping them to learn safe road practices, signaling, looking both ways, etc."
- I worry often about people running to buses across from 4000 block tyndall. It can be a busy road at peek times and people risk bolting across for buses with no cross walk there
- Cars driving too fast and not fully stopping at intersections. Please put in more speed humps"
- Please put in side walks or bike lanes. We love biking to school but the stress of getting there is hard with three little kids on bikes or walking. I'd love to feel a bit safer in our commute if there were sidewalks or at the very least a bike lane. And if I'm allowed to be greedy, I would love the path fixed from Houlihan Court to Hillcrest School (Grounds). It's a dirt and gravel path that severely needs maintenance.
- I think if there were sidewalks, there would be less people driving to drop off their child at the school.



- An increase in the number of and placement of sidewalks/bike lanes would definitely encourage us to have our children walk or bike to school when they are at an appropriate age. This not only helps with an increase in foot traffic to school, but can also help get people outside and enjoying their community in general. Thank you for considering.
- The side lack of sidewalks on the appropriate side of Tydell and safe cruising at Tydell & Hillcrest.
- The amount of idling cars outside of the school. The width of Greentree means there's a constant battle between cyclists, pedestrians and cars.
- For our family, we would be much more likely to let our children walk/bike to school if Tyndall had a sidewalk between Grandview and El Sereno Drive on the side closest to the school. If there was a barrier of some form this would put our mind at ease. Thanks for your time!
- If year round DST does go ahead this year- or any year - it will be dark until almost 9am and therefore I will not let my child walk to school at all. I'm also concerned with the zone in front of the school - parents often speed through to get there on time and block the sidewalk and road in the drop off/ pick up lane. It can be a bit scary even walking on sidewalks along there."
- We hope our children will be able to walk in the future. They are currently just too young to walk alone and we use after school care which requires an adult to release the child too. We pick them up on our way home from work so are already in our cars
- I think this survey is a great step to increase active transportation options for school aged children so habits can start young. I do not let my daughter ride because of the unsafe crossing at Tyndall and San Juan
- It is nice to have the neighbourhood travel through pathways to shorten the walk to school. These are beneficial and do help to shorten the walk distance and time it takes to get there. Bushes do get a bit overgrown at times
- Too many cars travel too fast and disregard crosswalks
- length of Hillcrest Avenue between the walking paths on Dunett to Chartwell should be school zone speeds. There are tons of kids who use those routes. Cars fly through that intersection without even looking at times.
- Could there be a safe walk system? Where a pre vetted volunteers take turns and walk a group of children
- My son thinks the road is to bumpy to scooter
- Choose to drive my children. Because of special needs cannot walk on their own



### C. School Neighbourhood Walkabouts

#### Walkabout 1 *(Before school start up)*

Date conducted: September 2nd, 2020 (10:00-11:00 am)

Participants (4): Natalie Bandringa (CRD), Colby Heddon (CRD), Lauren Hermansson (Saanich), Kelsey Mclaggan (Saanich)

#### Walkabout 2 *(After school start up)*

Date conducted: October 1st, 2020 (8:15-10:15 am)

Participants (7): Natalie Bandringa (CRD), Colby Heddon (CRD), Lisa Bruschetta (Saanich Police), Amanada Johnson (Vice Principal), and Aaron Foster (SD61) Regrets: Lesley Arnold (PAC)

Location	Issues raised @ Pre-Walkabout	proposed solutions	Key Players
School Drop off loop & parking lot	biggest problem for school site - traffic backs up onto street vehicles have been hit & run in loop people park in drop off only area	not working & confusing ed & encourage for AT <i>SD61 recently repainted with stopping area along curb and drive-through (no stopping) in middle lane &amp; teacher parking to the right</i>	SD & school PAC & Principal
	limited parking on property but lots on surrounding streets	D-5 sites needed Walking Wednesdays & close the drop off loop, Gr 5 valets (after covid)	CRD with PAC & principal
	driving & parking on grass	plant trees to prevent parking on grass (perfect for Garry oak meadow)	grant?
Greentree (in front of school)	lots of drop off/turning around in driveways & school frontage is "no parking"	D-5 sites needed walking school bus at front & back of school	CRD with PAC & principal
	review crosswalk location EA works as crossing guard (starts at 8:10 - 15 min before school start 2nd EA on site)	observe use & crossing patterns	Saanich
	think of me program?	consider	CRD & ICBC
	school streets?	Consider	CRD & Saanich
Greentree Sidewalk	tripping hazard	sidewalk needs repair	Saanich
Houlihan Cr (Back of school)	path leads to school	promote use with walking school bus	
	should this be a school zone?	Sign?	Saanich
School Zones/Area signs	are there signs on all needed streets?	Review sign placement	Saanich
Sidewalks in neighbourhood	Saanich has 30 yr plan (15 years out for Hillcrest)		Saanich
	Tyndall to Hillcrest - - north side - soon getting sidewalks		Saanich
Hillcrest @ Tyndall	new crosswalk in next 2 years		Saanich
Sierra Park	through Chartwell with path to Hillcrest Ave	possible D-5 sites	CRD with PAC & Principal
King Alfred park	with path to front of school		
Hillcrest school area sign	loose	fix	Saanich

# Active School Travel Planning

## Fall 2020 Update - Hillcrest Elementary

### Hillcrest Elementary 2020-21

The Capital Regional District, District of Saanich, and Hillcrest Elementary are working together through the **Ready Step Roll program** to identify barriers and solutions so more families can walk or wheel (bike, skateboard, wheelchair etc.) to/from school.

This program partnership focuses on infrastructure upgrades, encouragement and education opportunities for safer and more doable active travel for families.



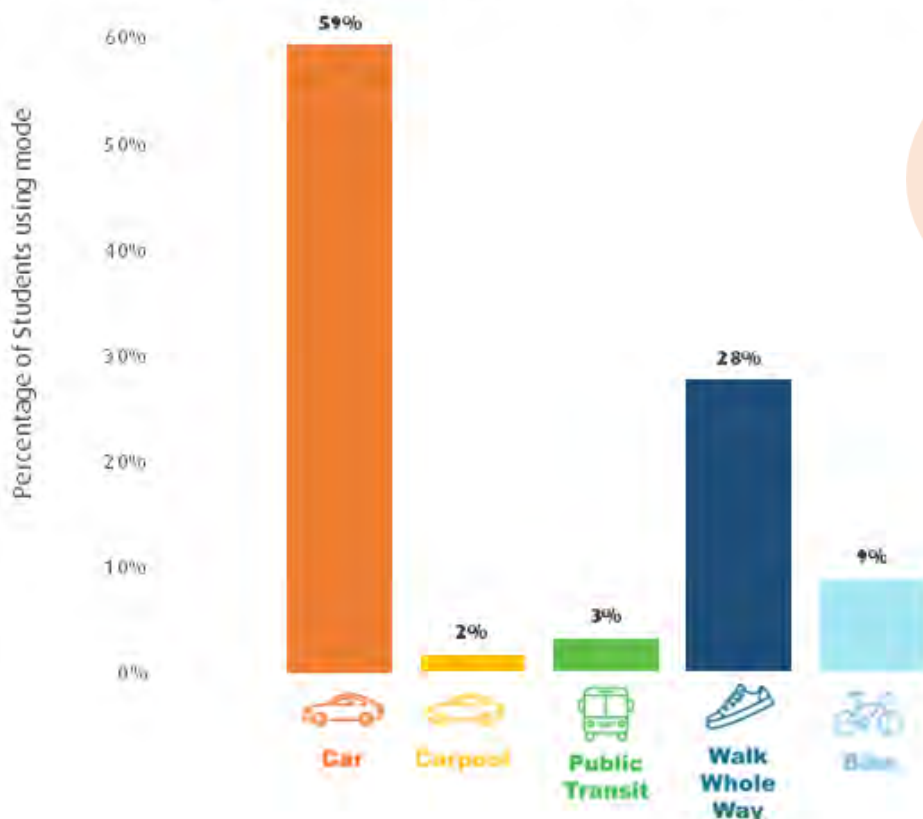
### School Community Consultation Highlights

- ✓ **June 2020:** 171 families completed the Baseline School Travel Survey.
- ✓ **August - October 2020:** School-Neighbourhood Walkabouts to be attended by CRD, Saanich and ICBC staff, police, Hillcrest PAC and parent representatives.

#### Data and insights from the survey and walkabout will help identify and prioritize:

1. Improvements to infrastructure in the school neighbourhood and/or on the school grounds;
2. Encouragement and education opportunities specifically appropriate for Hillcrest families.

#### How do Hillcrest students usually travel to/from school?



**90%** of surveyed families would prefer their child to walk and wheel to and from school



#### Want to get involved or share your ideas?

We want to hear from you!  
Contact your PAC or email:  
Natalie Bandringa,  
Program Coordinator,  
[regionalplanning@crd.bc.ca](mailto:regionalplanning@crd.bc.ca)

## Keep Kids Moving this Fall!



### GoByBike Week 2020

September 28th to October 4th

Everyone is invited to join whether riding to school, to do an errand, or just for fun!

**Register and create a team** with your class or make your own family team. Don't forget to log your trips to win... at the end of the week, one lucky class in Greater Victoria will win a set (x25) of fun bike bells and reflective slap bands!

#### Ways to Participate

[Register or Join a Team](#)

[Visit a Celebration Station](#)

[Listen to a Bike Skills Webinar](#)

[Try your local Neighbourhood Ride](#)

[Complete the Sticker Challenge](#)

**WALK & WHEEL TO  
SCHOOL WEEK**  
October 5-9, 2020

**Walk & Wheel to School Week** is free kick-start campaign held annually during the first week of October, working with schools to celebrate, educate and encourage students and their families to use and learn about the benefits of active school travel.

**Need ideas?** Check out the **2020 Guidebook** for tips and ideas to help keep kids walking and wheeling all winter long.

## What's Next for Ready Step Roll at Hillcrest?

From the data collected during from the Baseline School Travel Survey and Walkabouts, a list of key locations and active travel concerns was developed.

After an initial site visit in August, Ready Step Roll partners will meet with PAC representatives on Thursday, October 1st, 2020 during morning drop off to walk the local school streets and investigate concerns and potential solutions heard from families.

**To prioritize improvements and create positive change at Hillcrest Elementary, an Action Plan will be developed this winter, based on the 6 E's Approach to Active School Travel Planning.** In the meantime, the program will work with staff and parents to support active travel at our school.

The Capital Regional District, District of Saanich and Hillcrest Elementary are working together to help more families walk and wheel to and from Hillcrest!

This partnership identifies active travel barriers for Hillcrest families and potential infrastructure upgrades, in addition to education and encouragement opportunities for more doable, safe active school travel.

## What's happening at Hillcrest?

### In October

- ✓ Ready Step Roll partners joined together to do a walkabout around the School Neighbourhood
- ✓ Students took part in a Hands Up Survey (*see below*)

### In November

- ✓ Ready Step Roll began draft action planning
- ✓ Ready Step Roll presented at virtual PAC meeting
- ✓ PAC hosted a poll to ask families for their choice of a new bike or scooter rack for Hillcrest

### In December

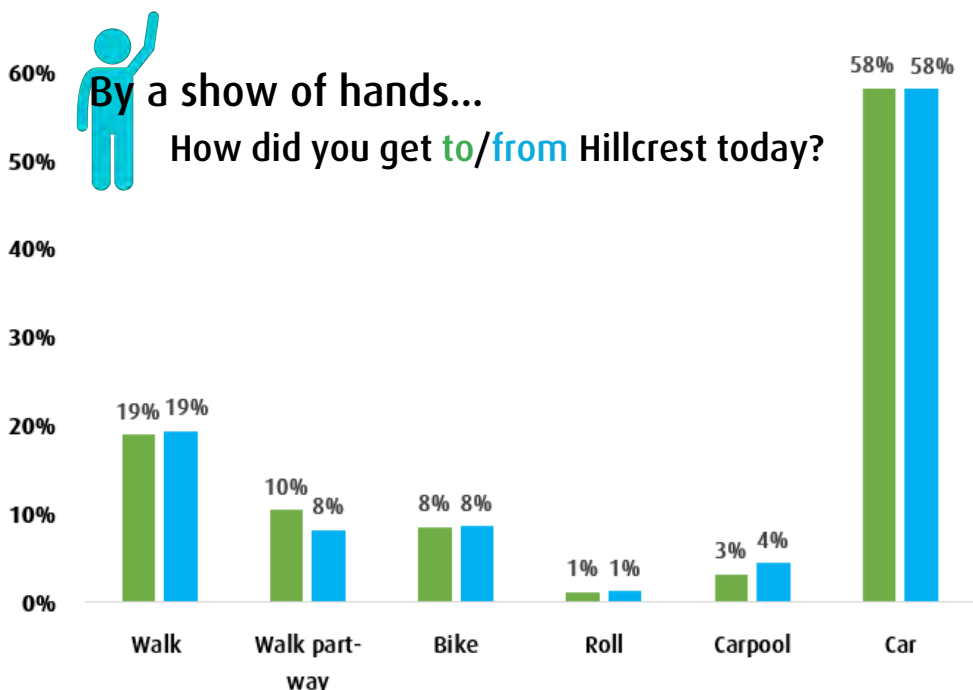
- ✓ Ready Step Roll met with the District of Saanich to confirm engineering actions
  - Hillcrest's Action Plan will be shared with the PAC in January/February 2021



171 families participated in the June Baseline School Travel Survey. This data helps city engineers justify and prioritize active travel improvements near our school!

As a thank you, Ready Step Roll has gifted us with a BRAND NEW BIKE RACK to support students & staff who want to ride their bike to and from school!

**Watch for our new bike rack at the front of the school in 2021!**



## Want to get involved to help Hillcrest Walk & Wheel?

We want to hear from you!

Contact your PAC or email:  
Natalie Bandringa,  
Program Coordinator,  
[regionalplanning@crd.bc.ca](mailto:regionalplanning@crd.bc.ca)

Want to learn more about Ready Step Roll?

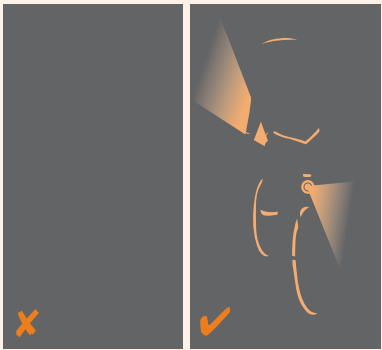
Visit our web page at  
[www.crd.bc.ca/ready](http://www.crd.bc.ca/ready)

Walking and Wheeling in the winter is possible when families plan their route, prepare with the right gear and practice smart, seasonal street skills!

### Help your child walk & wheel safely this winter:

#### BEING SEEN IS A BRIGHT IDEA!

- ✓ Carrying a light (or several) will help you see and be seen by others



- ✓ Bright, reflective rain gear will keep you warm, dry and visible in dark and rainy weather

If you are riding your bicycle, make sure it has:

- ✓ a front white light
- ✓ a rear red light

#### TAKE ACTION AGAINST DISTRACTION!

- ✓ Remove headphones so you can hear approaching cars that may be hard to see
- ✓ Avoid using devices while walking and wheeling

#### WALK THIS WAY!

- ✓ Walk on the inside edge of the sidewalk away from the road. **If there's no sidewalk - walk facing oncoming traffic**, so you can see approaching vehicles.
- ✓ Give yourself extra time to travel and remind children to watch for seasonal street hazards caused by rain, ice, & snow
- ✓ If your child is wheeling to school, remind your child to watch for slick terrain and to take corners slow

#### No reflective gear at home? Make your own!

Apply reflective tape in easy-to-see areas on your jacket for extra visibility!



- ✓ collar or hood
- ✓ sleeves or cuffs
- ✓ lower back

## What's Next for Ready Step Roll at Hillcrest?



1. In January, the draft Action Plan for Hillcrest will be shared with Hillcrest staff and PAC
  - This plan lists out actions to be carried out by Ready Step Roll partners, based on their individual roles and jurisdictions
  - To develop this plan, Ready Step Roll follows the [6 E's approach - learn more here](#)



2. In January, Drive to 5 sites for Hillcrest will be shared with families to help students being driven to/from school get the benefits of walking and wheeling part-way
  - Learn more about ["Drive to 5" here](#)

This year Hillcrest students, staff and PAC members partnered with Ready Step Roll to enable and encourage more students and staff to walk & wheel to/from our school.

Our goal was to encourage active travel and learn how we can reduce congestion/improve road safety at our school using **the 6 E's Approach to Active School Travel Planning**.

### Evaluation



### Education



### Equity



### Encouragement



### Engineering



### Enforcement



## Shifting gears at Hillcrest

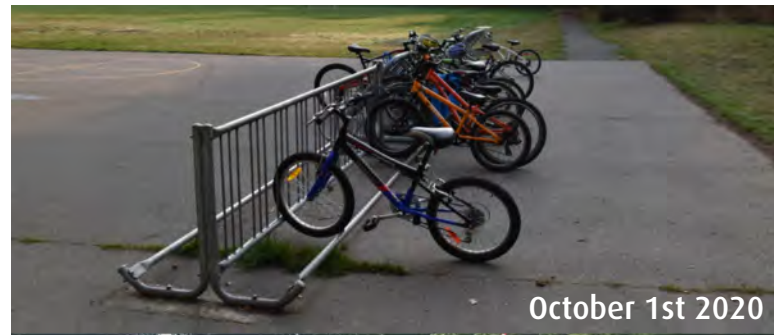
From May 4-6th, our Grade 4/5 students took part in the *iRide Bike Skills Course*.

From our June 2020 survey, we found **60% of Hillcrest students are driven less than 3km to/from school, but 90% of drivers would prefer to walk & wheel.**

During the skills course, **many students chose to ride their bike to/from school instead of being driven,** leading to busy bike racks and safer school streets!

Even with no changes in infrastructure, Hillcrest families had a collective impact on school street safety and comfort by **shifting their individual travel behaviours.**

### *Encouraging students to ride is the first step!*



October 1st 2020



May 4th 2021



Dear Mrs. Pickles  
Thank you for keeping us safe!  
From Daniel



## Crossing Guard Appreciation Month at Hillcrest



In February, our K-3 classes participated in creating thank you cards for our three crossing guards! The cards were gifted along with a coffee mug and gift card courtesy of ICBC. **We will be relocating our crossing guard to the Hillcrest/Greentree crosswalk** and are currently seeking additional funds to provide a second crossing guard at the Grandview/Ferndale crosswalk to enable more students to walk & wheel to/from school.

# Highlights from Hillcrest Elementary's Action Plan

## Encouraging & Enabling students to Walk & Wheel to Hillcrest Elementary



- ✓ The crosswalk in front of Hillcrest Elementary School will be improved to a raised crossing to deter vehicles from speeding in the school zone. Our crossing guard will be relocated to the Hillcrest/Greentree crossing once the improvements are complete.

- ✓ Hillcrest staff and PAC are seeking funds to secure a second crossing guard at the Ferndale/Grandview crosswalk. Please contact the PAC/Vice-Principal if you would like to share comments or support this action.



- ✓ The Plan Your Route to Hillcrest Map and Walk & Wheel for 5 help encourage families to find their best route to school or try a new one!

- ✓ A flashing pedestrian crosswalk will be installed at Tyndall Ave/Hillcrest Ave in 2021 as part of Saanich's Active Transportation Plan.



- ✓ A new school bike rack has been installed so more staff & students can ride their bike to/from Hillcrest Elementary. In certain catchment area cut-throughs, bollards have been relocated to allow bike trailers and cargo bikes to access the pathway.



## A BIG shout out and thank you to all of our partners ...

Vice-Principal Amanda Johnson, the PAC, Hillcrest Students & Staff, The District of Saanich, Constable Bruschetta, SD61, ICBC and IRide.



## What happens when we enable & encourage students to Walk & Wheel from home or 5 minutes away?



We help build student confidence & capability



Students become more self-reliant, helping families and household schedules



We create safer streets by reducing congestion before & after school



We support local climate action by lowering individual GHG emissions



Students arrive alert & ready to learn after a burst of activity



You can save time & money (& frustration!) by skipping school traffic line ups



Students see physical and mental health benefits



With siblings & neighbours no one has to travel alone, creating peer-to-peer connections in our community

Keep up the momentum this summer and watch for Hillcrest's full Action Plan in the final School Travel Report, available in Sept 2022!

# Appendix D: 6 E's of Active School Travel Online Resources for School Communities



August 2021



# THE 6 E'S APPROACH TO ACTIVE SCHOOL TRAVEL PLANNING



The 6 E's of Active School Travel Planning – Resources for School Communities is an [online resource](#) which provides schools with the ideas, tools and activities needed to build and support the ongoing internal capacity needed to continue a school-wide active travel culture.

The 6 E's Approach to Active Travel aims to be a comprehensive, integrated and sustainable strategy to build school-neighbourhoods that are walkable and wheelable for all ages and abilities, by mitigating and addressing barriers preventing accessible active travel.

Students, families, educators, and Active Travel School Leaders are encouraged to [access the resources online](#) through the [Ready Step Roll webpage](#) to support school community equity, education, and encouragement active travel initiatives, while complimenting evaluation, engineering, and enforcement actions facilitated by local government engineers, the CRD and community partners.

**Visit our webpage to learn more about the [6 E's approach to active travel](#) with tips, tools and ideas to support active travel at your school!**

6 E's of Active Travel

The 6 E's of active travel describes the multi-faceted approach used by Ready Step Roll to build capacity within school communities after they have completed the program. The resources below have been developed as part of the Ready Step Roll program, but all resources have been made available for public use in all regional school communities.

Education	Equity	Evaluation	Engineering	Enforcement	Encouragement
-----------	--------	------------	-------------	-------------	---------------

With the right training, students can walk and wheel to school more often while enjoying increased physical skill sets and self-confidence. School communities learn about active travel benefits and caution points through road and traffic safety education and bike skills courses, developed in partnership with police, ICBC, and local non-profit organizations.

- Road Safety Scavenger Hunt**- Keep your eyes peeled! This resource challenges families to find different infrastructure, traffic signs, special vehicles, and neighbours while you walk through your community. Use it to teach your child about traffic safety or to change up your daily walks.
- Move your Feet on the Street Challenge** - How many ways can you move on your street? We're challenging kids to travel their "home stretch" using as many different forms of active transportation as possible. Includes a warm up brainstorming activity, followed by hands-on learning and finally, thematic-podcasts to help kids wind down after moving.
- Ready Step Roll Bingo** - On your marks, get set, BINGO! Challenge family members to be the first player to complete a line on their bingo card while performing different strength building movements, exercises, and stretches to help stay active at home.
- Backyard Adventure Course** - Get creative and see how you can move through your homemade obstacle course! This resource includes ideas on how to transform common household objects and toys into different obstacles for kids to maneuver through in the driveway, backyard, or even the living room!
- Physical Literacy Resource List**- a growing master list containing links to websites with ideas and activities to help keep kids active while they develop personal physical literacy. This list will continue to be updated.
- ICBC Road Safety Resources for Teachers**

[Equity »](#)

## 6 E'S APPROACH TO ACTIVE SCHOOL TRAVEL PLANNING

The 6 E's approach to Active School Travel Planning aims to be a comprehensive and sustainable approach to making school-neighbourhoods more comfortable to walk and wheel, by identifying and addressing safety and social barriers to better support and enable Active Travel with confidence.



### Equity

Ensure that the initiative is benefiting all demographic groups across the Capital Region, with particular attention to ensuring safe, healthy, and fair outcomes for all students of diverse family, cultural, socio-economic backgrounds, abilities and identities.



### Evaluation

Collect data and user insights to better understand the school-neighbourhood context, to determine appropriate approaches, identify opportunities to improve the effectiveness of an approach for a given school community and monitor changes over time.



### Engineering

Infrastructure upgrades to improve the comfort of walking and wheeling on streetscapes and built environments located within immediate school-neighbourhoods, on common/high-use routes, and on school property.



### Enforcement

Crossing guards, school supervision and police working together to improve awareness and compliance of parking regulations, traffic laws, and personal safety with a focus on the immediate school-neighbourhood and on school property.



### Education

Information and initiatives to improve perceptions of active travel to reduce conflicts between transportation modes and build the confidence and personal skills needed to safely and confidently walk or wheel to and from school.



### Encouragement

Celebrate and promote walking and wheeling as easy, fun and inclusive ways to travel in our community, alone or with friends and family.