

## Thetis Lake Regional Park – Accessibility Information

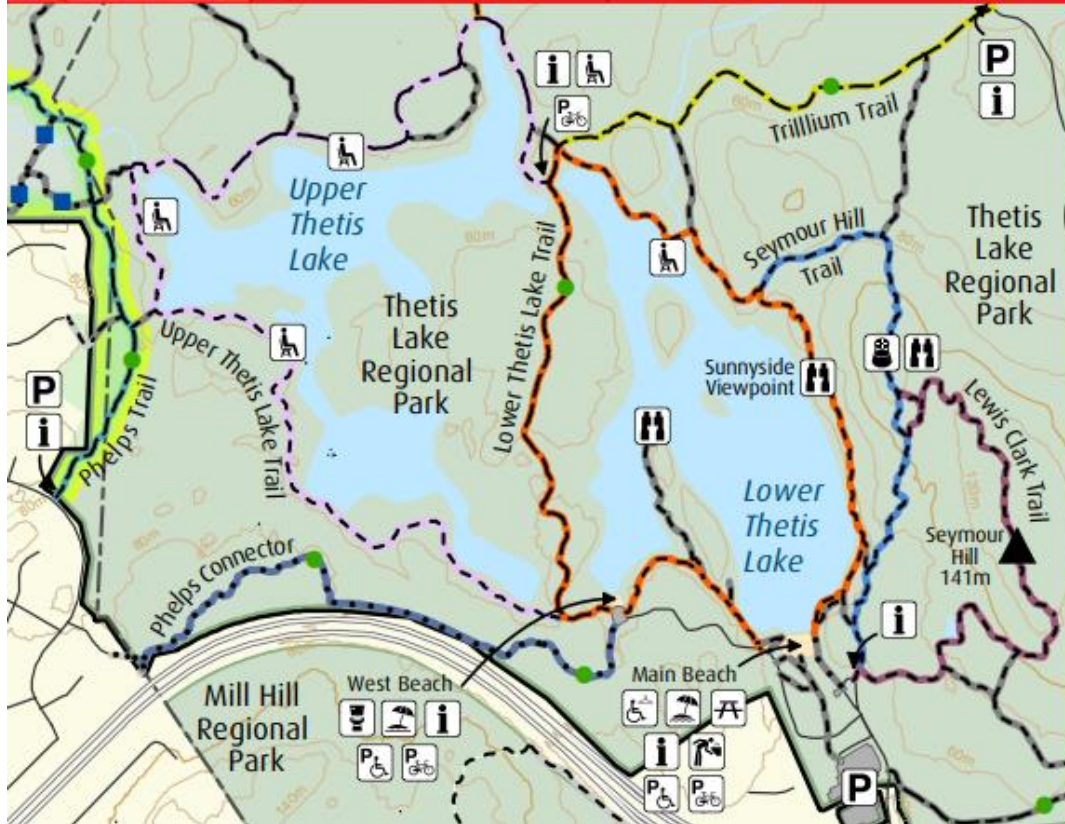
### Entrance

The main area of Thetis Lake Regional Park is accessed off Six Mile Road in View Royal. A large log sign is visible at the entrance. A CRD Parks sign is also visible along Highway 1 and the Island Highway. Vehicular access routes into the park are paved. The park can also be accessed by public transit via the #50 BC Transit Route.



### Parking Stalls

Two parking areas at Thetis Lake have designated accessible parking stalls. These areas are outlined on the park map and include Main Beach and West Beach.



Four accessible parking stalls are located at main beach, directly across from the washrooms. The surfacing of these stalls is asphalt.



Two accessible parking stalls are located at West Beach. The surfacing of these stalls is asphalt.



## Park Entrance Trails and Pathways

From the upper roundabout parking area, an accessible asphalt pathway leads to the main beach and picnic area. An accessible ramp and low slope pathway lead from the other accessible parking stalls at the main beach and connect with the picnic and washroom area. A packed gravel pathway with moderately steep grades and some surface transitions leads from the bus stop into the main picnic and beach area. Pay parking stations are in the main parking lot at the front of the park. Payment mechanisms are at approximately 150cm (59") height. Pay by phone information is posted on signage at all parking areas. Images on next page.



## Signage and Wayfinding

Directional signage within the park points the way to different areas and different trails. Signs are colour contrasting and use both text and symbols. A kiosk is in the main beach and picnic area with park map and interpretive information.

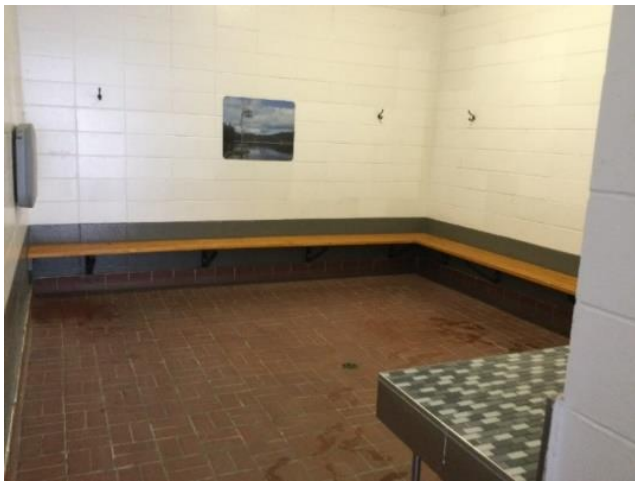
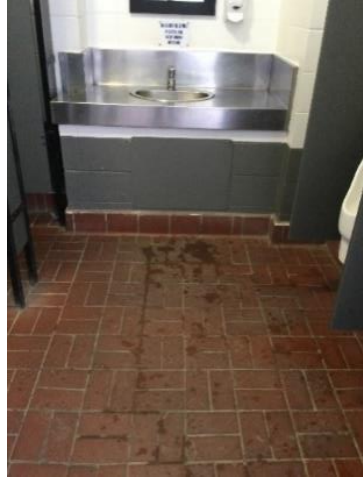


## Toilet Building Washroom and Changerooms

Washrooms are in the picnic area at the main beach. Packed gravel, low slope pathways connect the accessible parking and picnic area to the washroom. Washrooms have accessible toilet stalls with transfer space and grab bars beside the toilet. Toilet paper dispensers are closed-roll style, mounted above the side grab bar. Latch locks are located on the door. The sink is in a narrow, walled area on the men's side. Sinks on both women's and men's include a counter, with a closed area underneath the bowl.

Change rooms are located behind the toilet area with benches and coat hangers. Benches are at approximately 45cm (18") height and coat hanger are at approximately 185cm (73") height. The women's side has individual changing stalls. Access width to these stalls is approximately 56cm (22").

A foot wash station and drinking fountain are located outside the main washrooms. The design of the fountain allows knee clearance under the bowl. Operating mechanism is push-button, which requires constant pressure to maintain water flow. The foot wash station has a turn handle and requires constant pressure to maintain water flow.



## Trails

There are several popular hiking trails at Thetis Lake such as the Lower and Upper Thetis Lake Trails. These trails are mainly wide natural surface trails with varying slopes and terrain. Some trails have slopes greater than 8%. Trails consist of areas with rocks, roots, woody debris, and narrow pinch points. Benches are dispersed along the trails and are located on park maps. Not all benches will be accessible for people with limited mobility.



## Garbage and Recycling Receptacles

Waste receptacles, located in the main picnic area are generally on firm, level ground with access from front and sides. Small post mounted waste receptacles are located along the Lower and Upper Thetis Lake Trails and are at approximately 117cm (46") height.



## Picnic Tables

Picnic tables are in the main beach area adjacent to the washrooms. Three tables have accessible overhangs at one end. Most accessible picnic tables are on a firm level surface. One large picnic table is on the beach. This table has an accessible overhang and is connected to a concrete pathway and surface.



## Main Beach and Lake Access

The main beach area is made up of soft sand. A firm level surface leads along the side of the beach to both a concrete pier over looking the lake and to a Mobi Mat providing water access for those with limited mobility.

