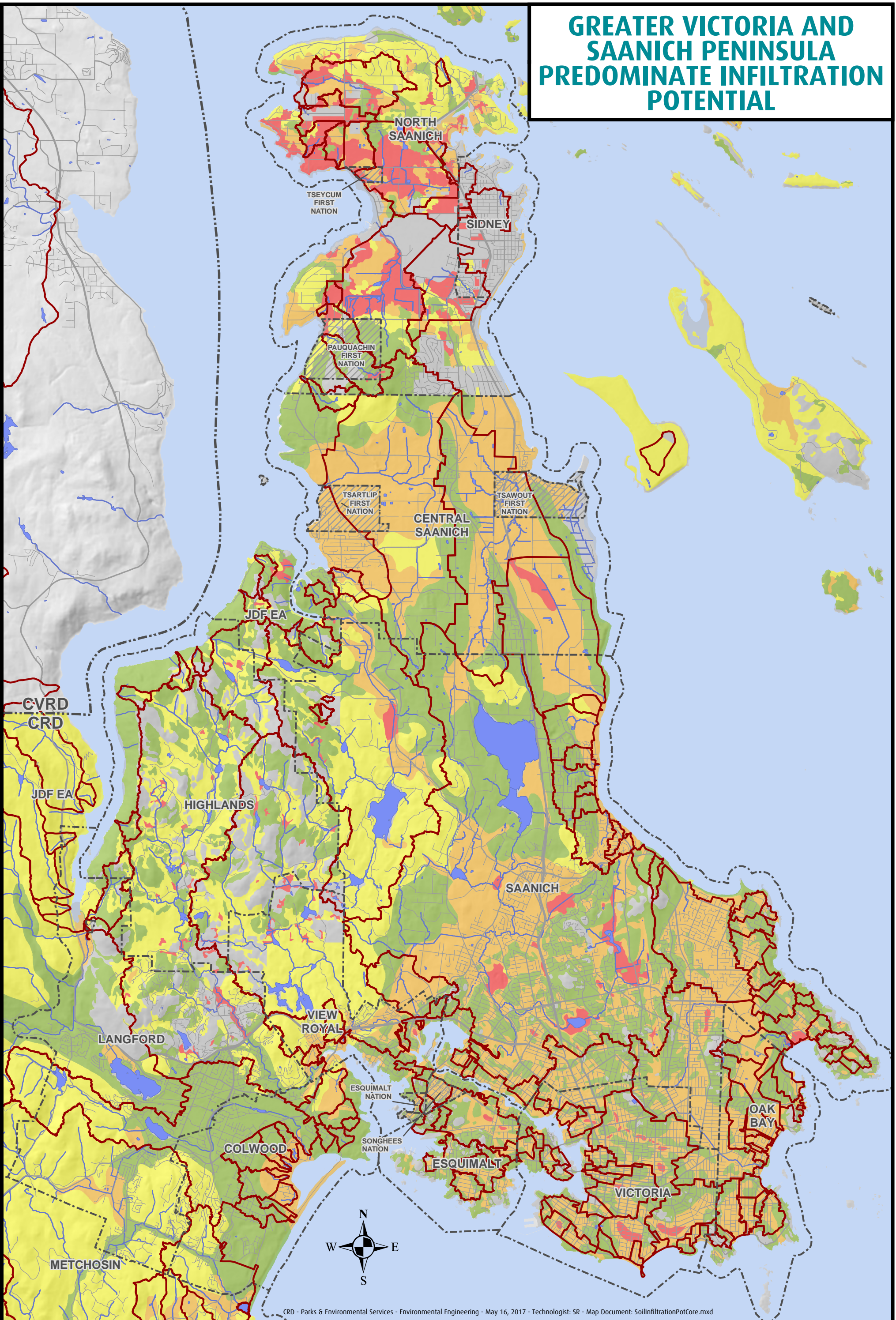
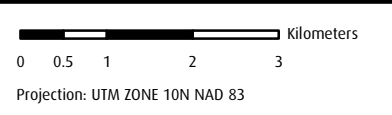


GREATER VICTORIA AND SAANICH PENINSULA PREDOMINATE INFILTRATION POTENTIAL



CRD - Parks & Environmental Services - Environmental Engineering - May 16, 2017 - Technologist: SR - Map Document: SoilInfiltrationPotCore.mxd



- Municipal Boundary
- CRD Boundary
- Significant River/Stream/Ditch/Strom Drain
- Watershed/Catchment >10ha
- First Nation Reserve Land

- Soil Infiltration Rating Potential
Hydrological Soils Grouping***
- High (Group A)
 - Medium (Group B)
 - Low (Group C)
 - Very Low (Group D)
 - No data/information, bedrock or fill

Important: This map is for general information purposes only. The Capital Regional District (CRD) makes no representations or warranties regarding the accuracy or completeness of this map or the suitability of the map for any purpose. This map is not for navigation. The CRD will not be liable for any damage, loss or injury resulting from the use of the map or information on the map and the map may be changed by the CRD at any time.

* For Details refer to CRD Region-wide Infiltration Mapping Project Report, Synetric Consulting Group & Hillcrest Geographics, December 2016, available at www.crd.bc.ca/watersheds