

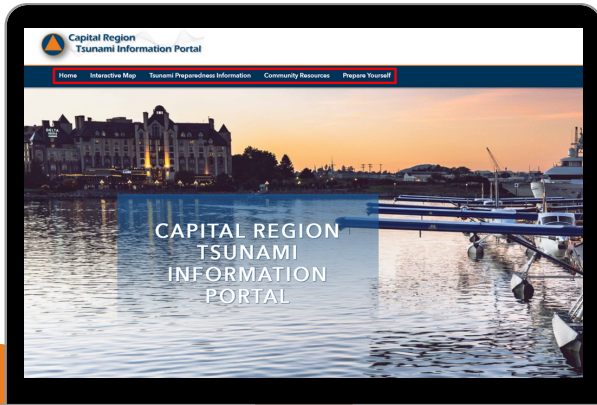
TSUNAMI INFORMATION PORTAL USER GUIDE

TSUNAMI SAFETY. PLAN NOW. ACT LATER



Technical Requirements

- The portal is viewable on mobile and desktop browsers.
- For best results, supported browsers include Edge, Firefox, Safari and Chrome 64-bit.

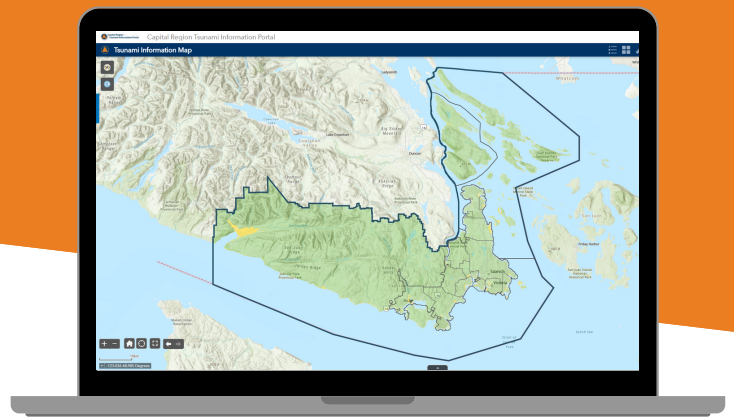


Introduction to Portal Features

- The landing page provides access to mapping and information resources relating to tsunami preparedness in the capital region.
- The clickable links in the header allow users to navigate the different sections: the Home Page, Interactive Map, Tsunami Preparedness Information, Community Resources and the Prepare Yourself webpage.

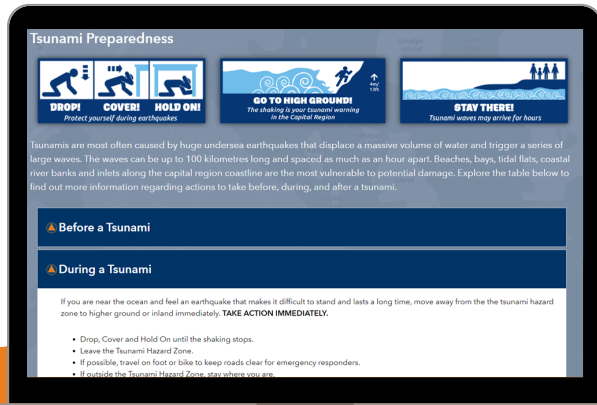
Interactive Map

Allows the user to explore and visualize place-based tsunami-related information.



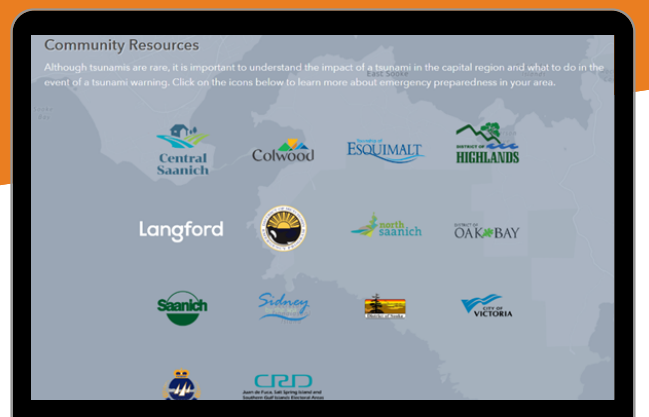
Tsunami Preparedness Information

Provides tsunami preparedness information for Local and Distant Tsunami events.



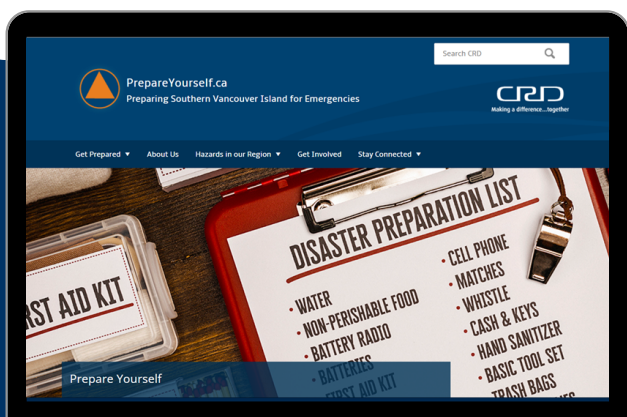
Community Resources

These clickable icons direct users to learn more about emergency preparedness in their local jurisdiction.



Prepare Yourself

Takes users to the Prepare Yourself Website to learn about additional hazards and emergency preparedness in the Capital region.



TSUNAMI INFORMATION PORTAL

TSUNAMI SAFETY. PLAN NOW. ACT LATER

FREQUENTLY ASKED QUESTIONS

Is there an app I can download on my phone?

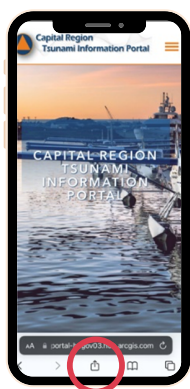
No, there is not an app. The portal is built on a webpage application that uses a website URL.

Can I create a shortcut on my homescreen?

Yes. Please see the instructions below.

Apple Devices

1. Launch Safari (Note: Google Chrome, and other browsers are not compatible for this function on Apple devices).
2. Navigate to maps.prepareyourself.ca
 - a. Tap "Go"
 - b. Tap the share icon at the bottom of the screen
 - c. Pull the menu up, and tap the option to "Add to Home Screen"



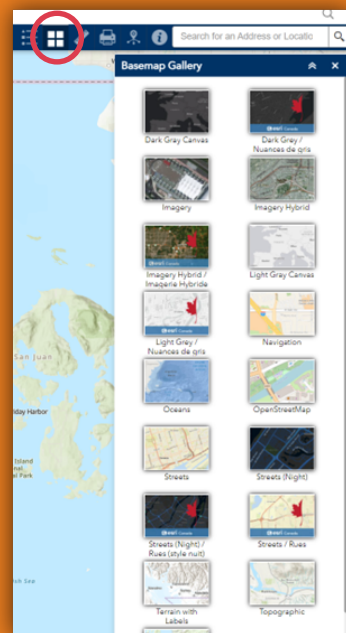
Android Devices

1. Launch Google Chrome, Firefox, or Edge.
2. Navigate to maps.prepareyourself.ca
 - a. Tap the Menu icon (three dots on the upper right hand corner) and tap "Add to Home Screen"



How can I change the basemap?

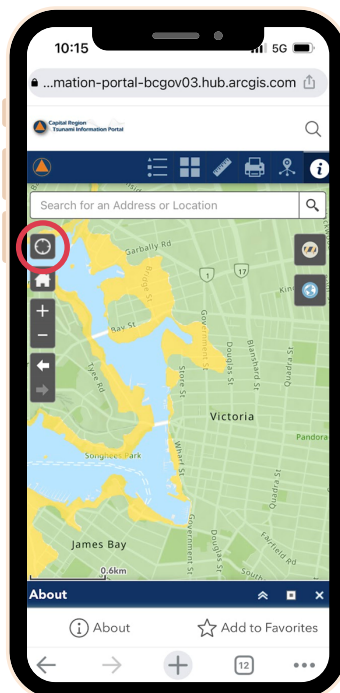
1. The second widget icon along the top right of the screen (four squares) directs you to the Basemap Gallery.
2. Selecting this will open a menu to many different basemaps.



How can I use the "My Location" button on the map when I open it on my mobile device?

Once opened, the map interface will present an icon along the left hand side that looks like a target. This is the "My Location" button.

- Tap the icon and then tap "Allow" when prompted to let the app use the device's location
- The map will zoom into where the device is located
- To reset the zoom and pan functions, tap on the icon again



TSUNAMI INFORMATION PORTAL

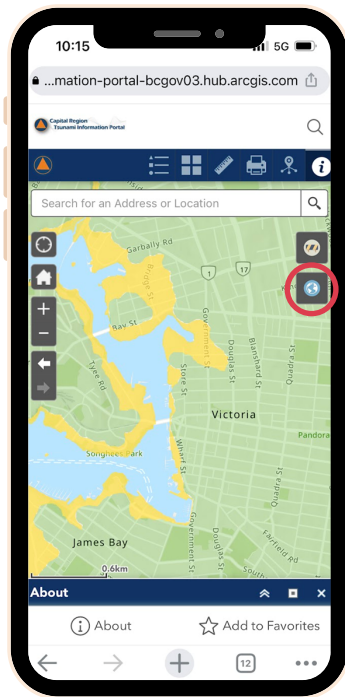
TSUNAMI SAFETY. PLAN NOW. ACT LATER

FREQUENTLY ASKED QUESTIONS

Can I add landmarks to the map?

Yes, you can add reference features to the map using the globe-like layer list icon named "Administrative References".

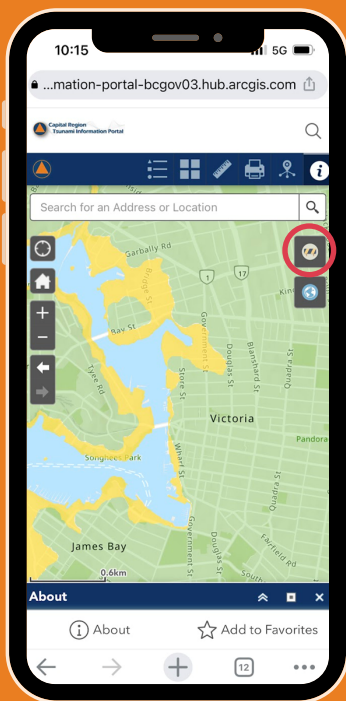
- Landmarks include first responder sites, civic facilities, and B.C. Schools (K-12)



Will I know if there is a tsunami warning by visiting this portal?

Yes, the map is linked to [EmergencyInfoBC](#) and will automatically display any tsunami notifications (warning, advisory, watch, or cancellation).

Open the "Tsunami Awareness" layer list widget to view tsunami notification symbology and toggle on/off additional layers including the Provincial Tsunami Notification Zones.



What functions and widgets are available on the desktop and mobile applications?

Both the desktop and mobile applications present the same data and the same widgets, just in different layouts.

