

Capital Regional District

Roche Cove/ Matheson Lake Regional Parks



Park Amenities

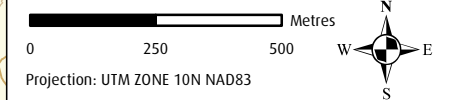
- | | | | |
|--|------------------------|--|-------------|
| | Accessible Picnic Area | | Fishing |
| | Accessible Toilet | | Information |
| | Beach | | Parking Lot |
| | Bench | | Swimming |
| | Bicycle Rack | | Viewpoint |

Trails By Designated Use

- User Friendly Trail
- Hiking Trail
- Hiking/Cycling Trail
- Hiking/Equestrian Trail
- Hiking/Cycling/Equestrian Trail
- Unofficial Trail (Not Maintained)

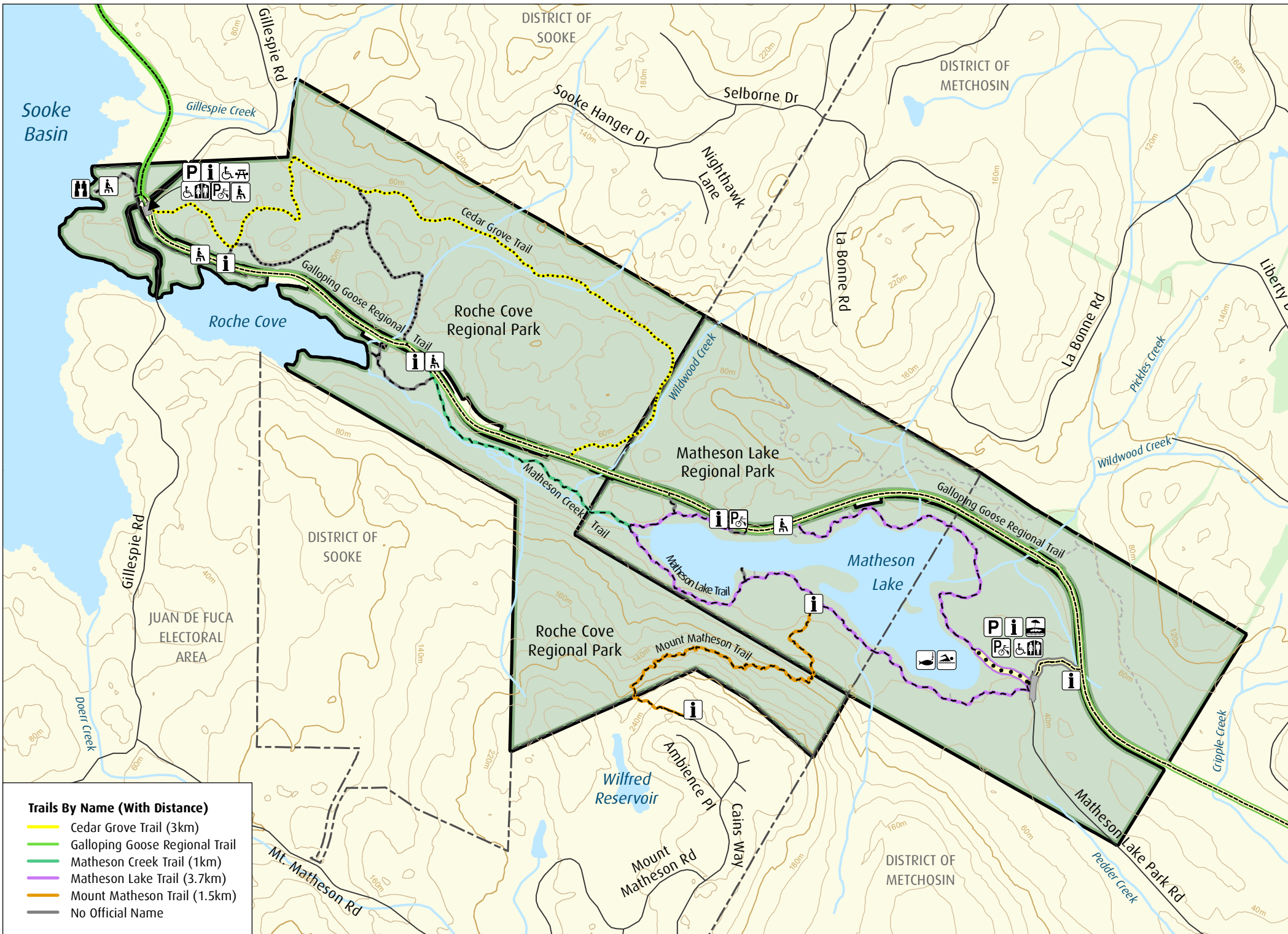
Map Features

- Road
- Municipal Boundary
- Contour - 100m interval
- Contour - 20m Interval
- River/Creek
- Wetland/Lake/Reservoir
- Roche Cove/Matheson Lake Regional Park
- Other Park/Protected Area



Disclaimer

Important This map is for general information purposes only. The Capital Regional District (CRD) makes no representations or warranties regarding the accuracy or completeness of this map or the suitability of the map for any purpose. **This map is not for navigation.** The CRD **will not be liable** for any damage, loss or injury resulting from the use of the map or information on the map and the map may be changed by the CRD at any time.



Trails By Name (With Distance)

- Cedar Grove Trail (3km)
- Galloping Goose Regional Trail (1km)
- Matheson Lake Trail (3.7km)
- Mount Matheson Trail (1.5km)
- No Official Name