

CRD - Parks & Environmental Services - Environmental Engineering - Dec 1, 2015 - Technologist: SR/PB - Map Document: CALWMCMediaPlantOptionsSites.mxd

CRD Sanitary Trunk

Pleasant St Site

David St Site

Bridge St Site

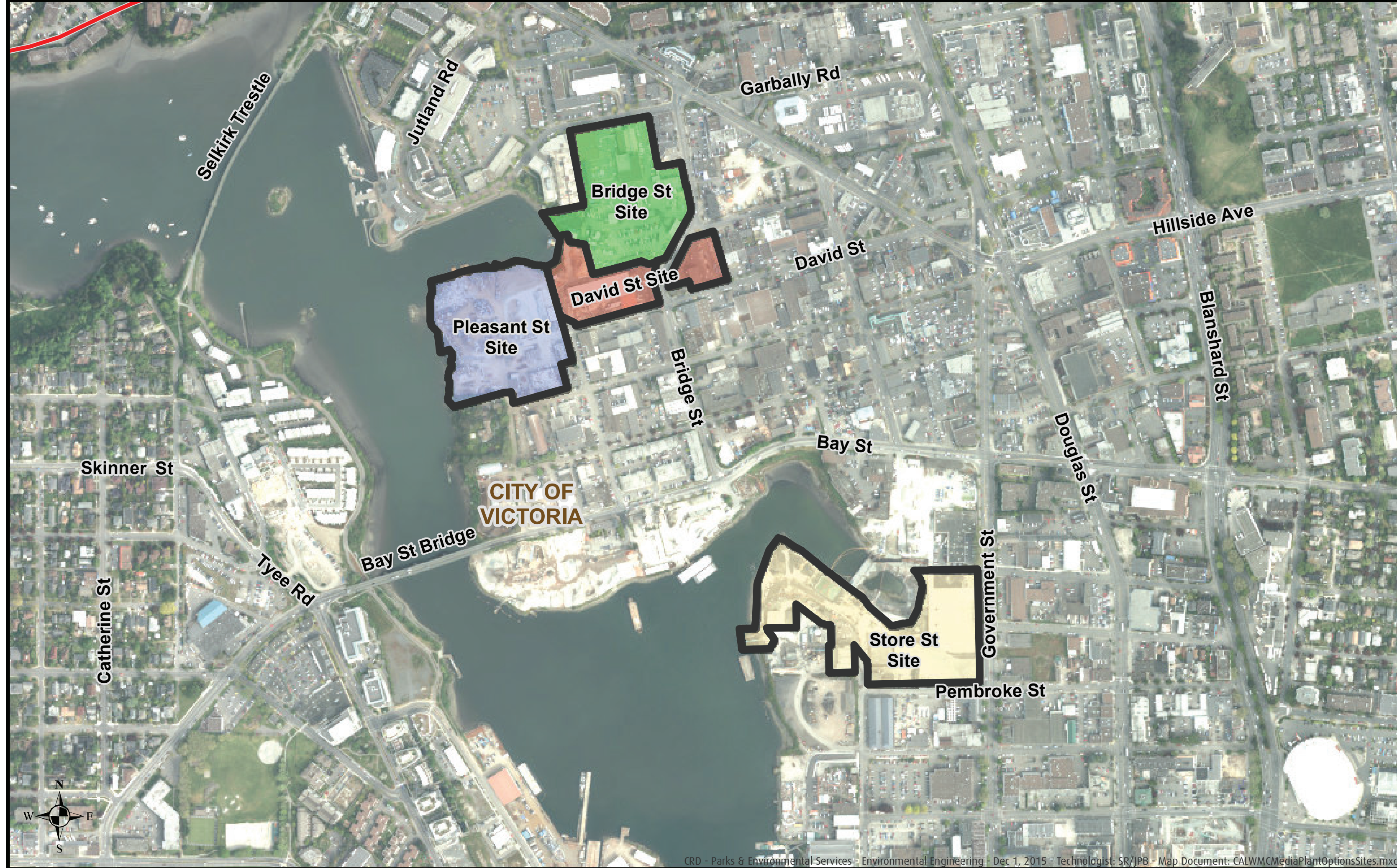
Store St Site






Metres
0 100 200

Projection: UTM ZONE 10N, NAD83

DISCLAIMER
This map is for general information and may contain inaccuracies.

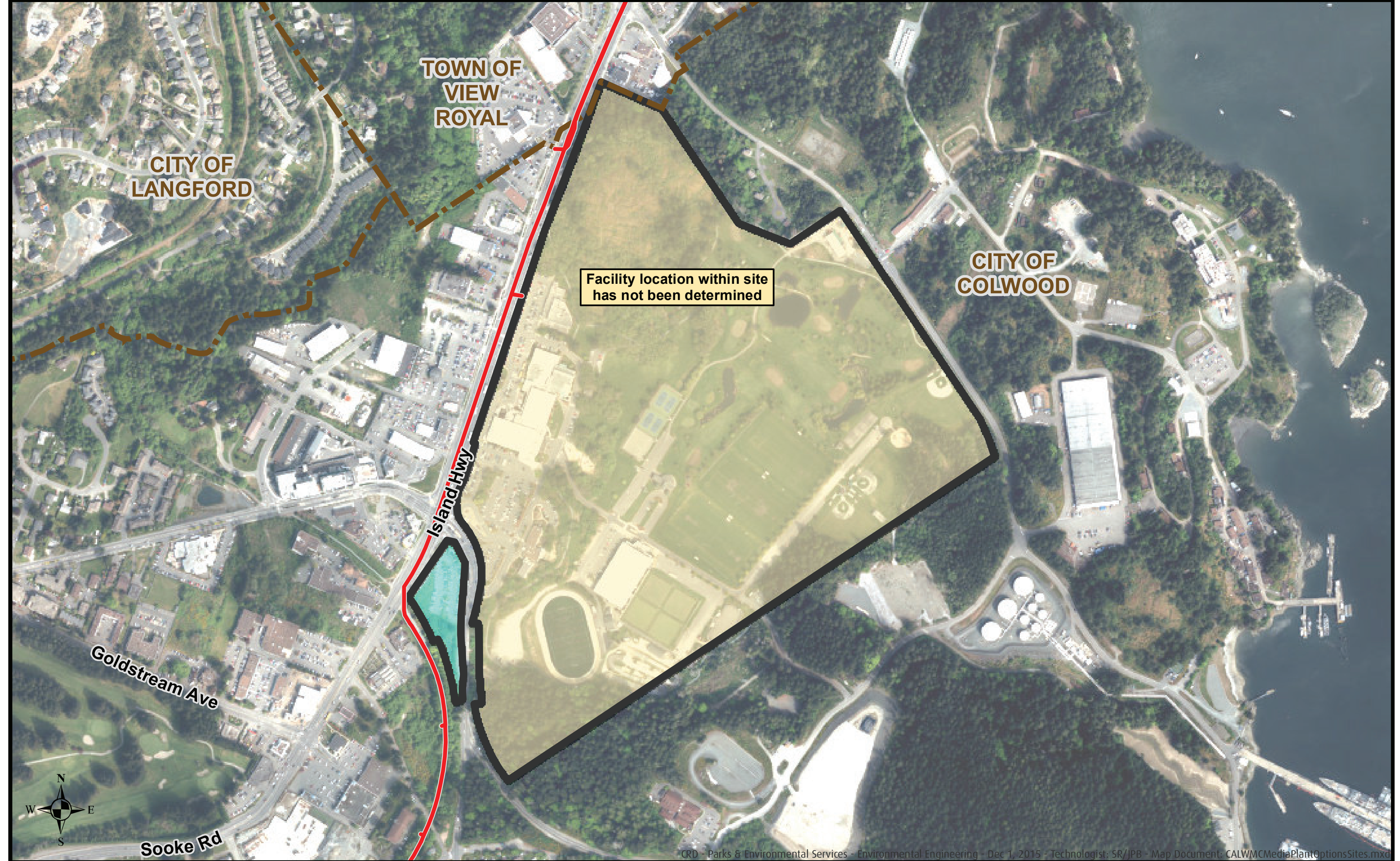
1 Plant Option **Victoria - Rock Bay and Garbally Landing** 







 CRD Sanitary Trunk	 Pleasant St Site	 David St Site
	 Bridge St Site	 Store St Site

0 100 200 Metres
Projection: UTM ZONE 10N, NAD83
DISCLAIMER
This map is for general information and may contain inaccuracies.

2 Plant Option **Colwood - Juan de Fuca Recreation** 



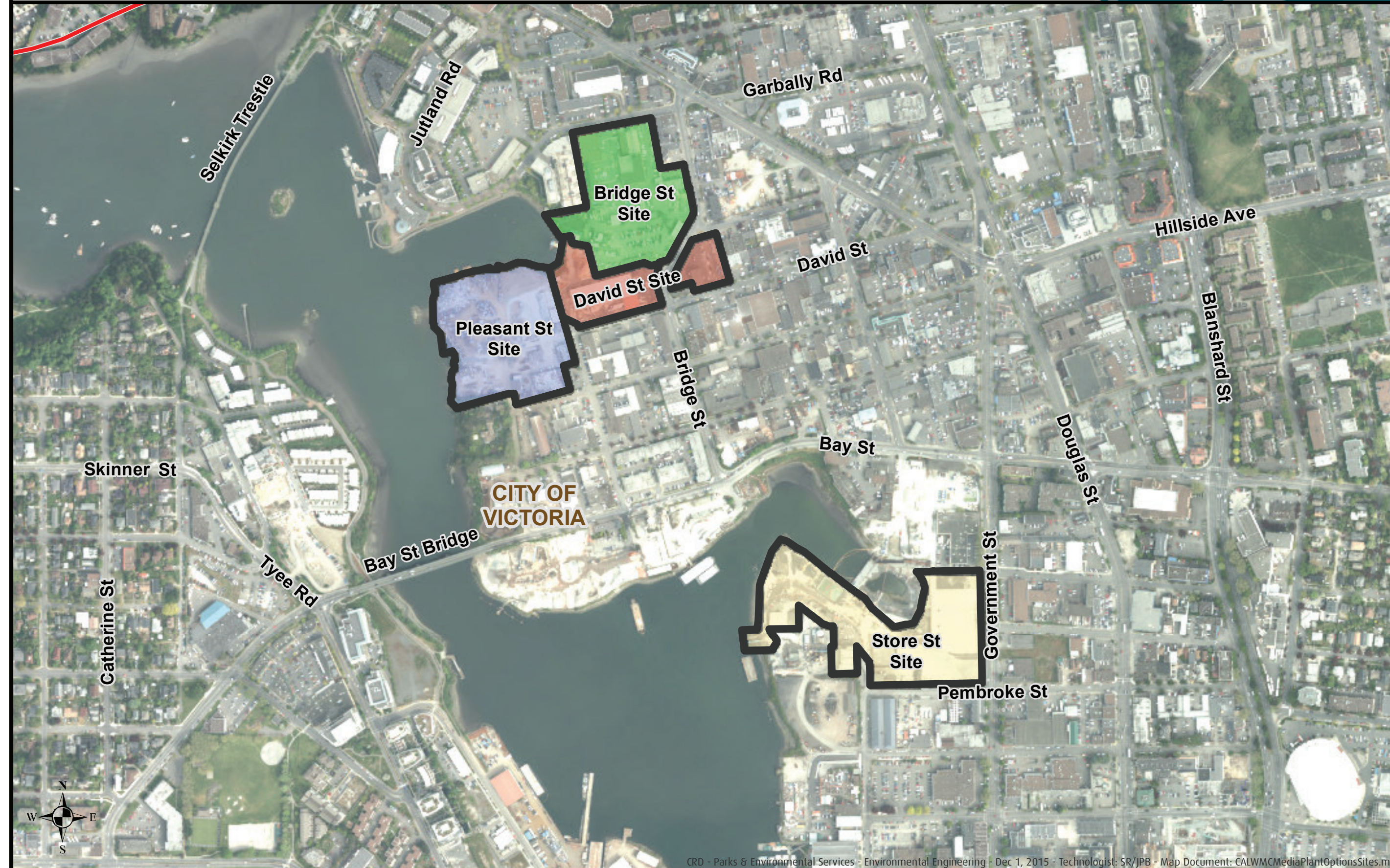
 CRD Sanitary Trunk	 Juan de Fuca Recreation	 Colwood Park and Ride
 Municipal Boundary		

0 100 200 Metres
Projection: UTM ZONE 10N, NAD83
DISCLAIMER
This map is for general information and may contain inaccuracies.

1 Plant Option

Victoria - Rock Bay and Garbally Landing

CRD

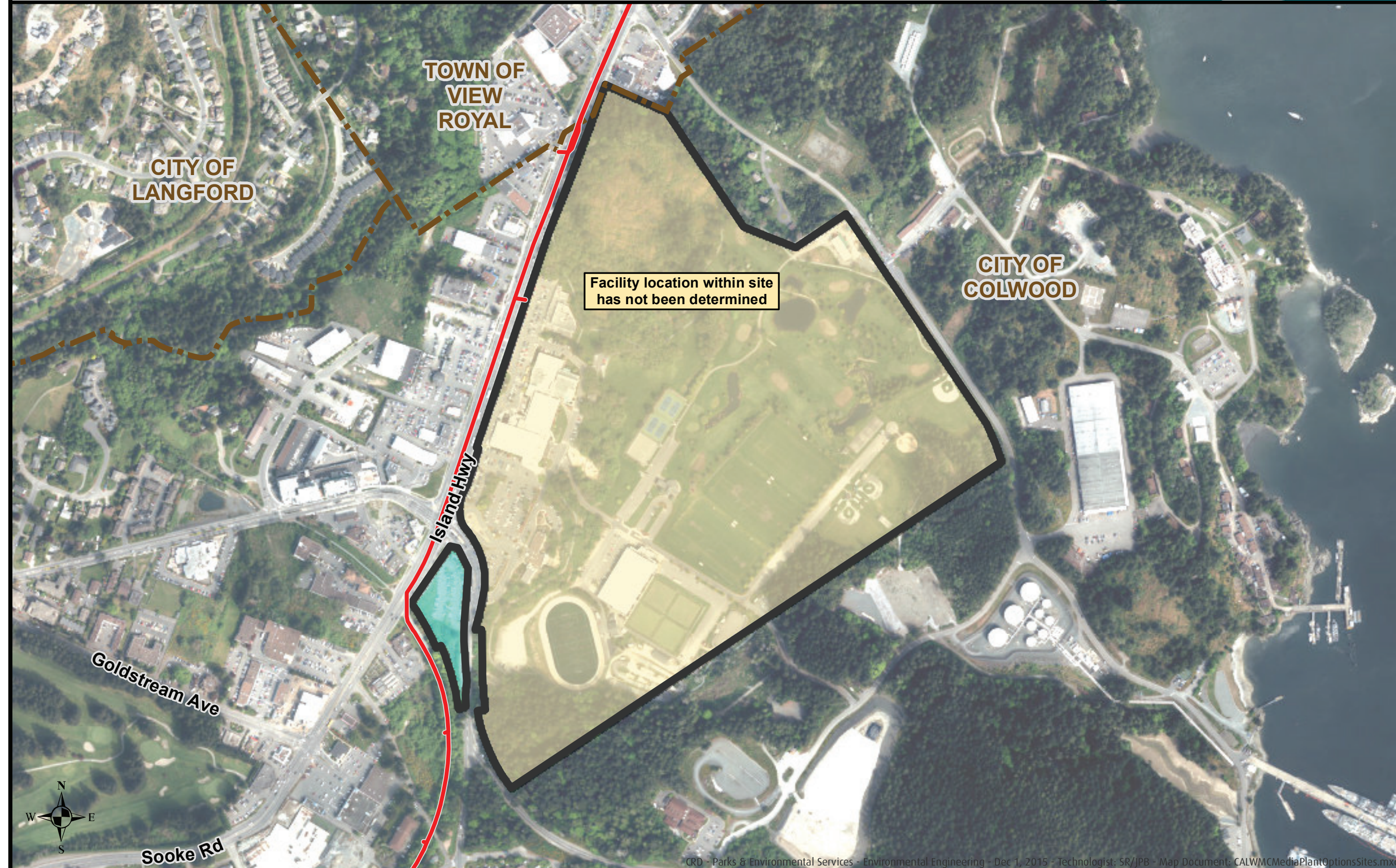


CRD Sanitary Trunk	Pleasant St Site	David St Site	 Projection: UTM ZONE 10N, NAD83 <small>DISCLAIMER This map is for general information and may contain inaccuracies.</small>
	Bridge St Site	Store St Site	

2 Plant Option

Colwood - Juan de Fuca Recreation

CRD



CRD Sanitary Trunk	Juan de Fuca Recreation	Colwood Park and Ride	 Projection: UTM ZONE 10N, NAD83 <small>DISCLAIMER This map is for general information and may contain inaccuracies.</small>
Municipal Boundary			

3 Plant Option

Esquimalt Nation

CRD



CRD Sanitary Trunk	Esquimalt Nation	 Projection: UTM ZONE 10N, NAD83 <small>DISCLAIMER This map is for general information and may contain inaccuracies.</small>
Municipal Boundary		

3A

3B

3
PLANT
OPTION

